

Эффективность света:

137 Lumen/Watt

Качество света:

CRI: 84,7

Цветовая температура:

4016 K

Поток: 25212 lm

Интенс.: 5681 cd

Мощн.: 185 W

КПД: 0,97

4 PLANES



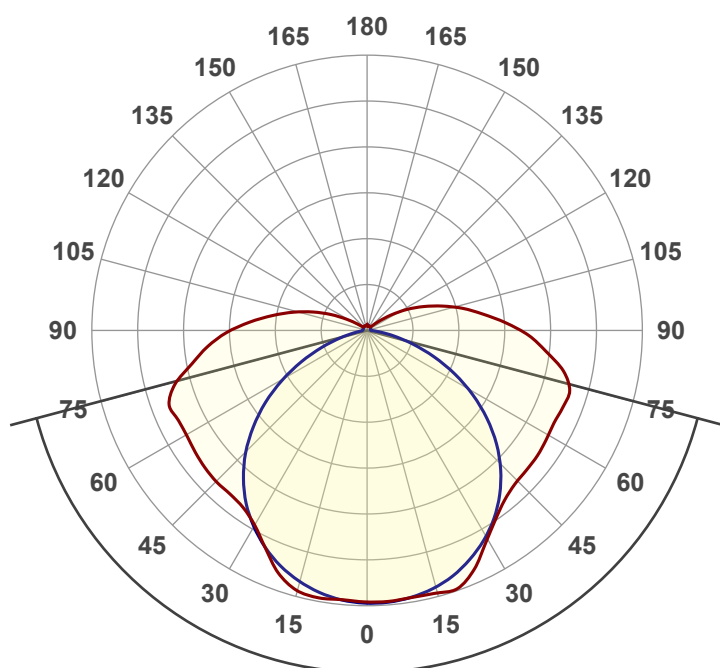
Название продукта:

ViLED CC

M1-MK-H-192-366.210.150-4-0-67

Дата и время:

15.12.2017 16:13:07



Угол пучка

150,2°

Цвет

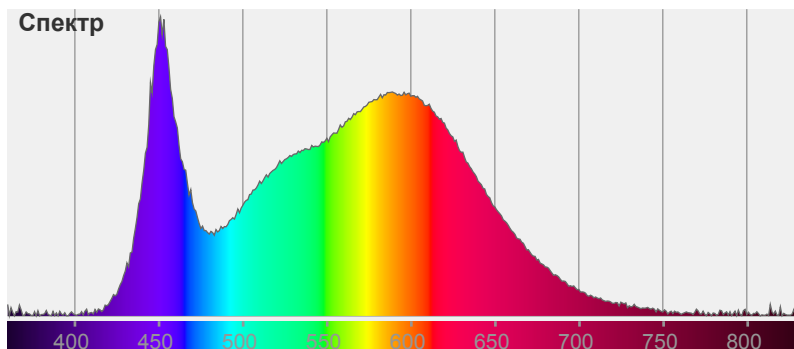


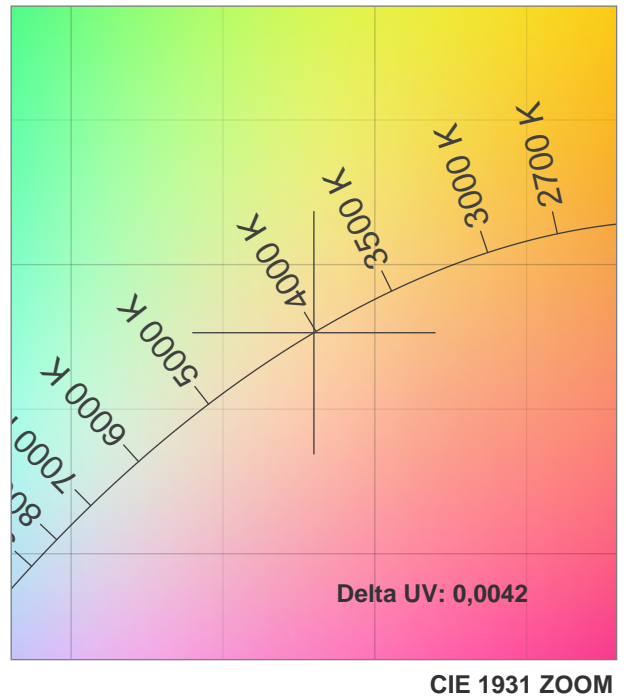
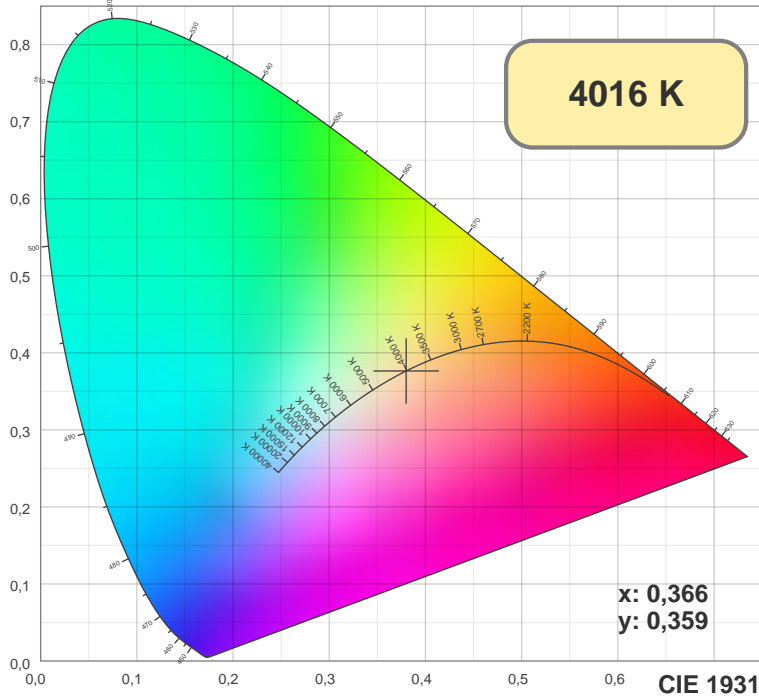
CIE1931

x: 0,366

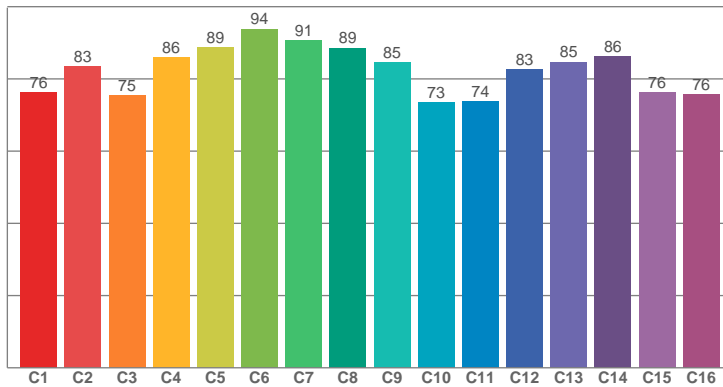
y: 0,359

Спектр

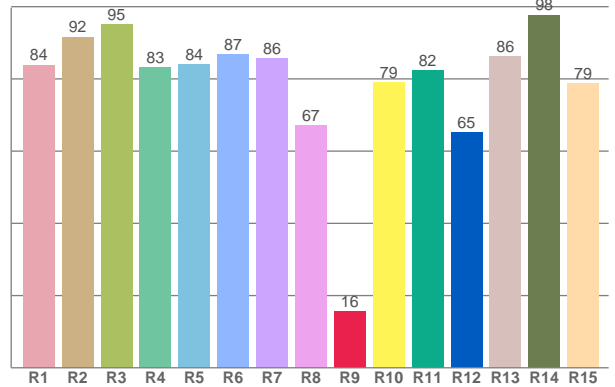




TM30: 82,2



CRI: 84,7 (R1-R8)



CRI R values, only R1-R8 are used to calculate final CRI value

R1	R2	R3	R4	R5	R6	R7	R8	R9	R10	R11	R12	R13	R14	R15
83,91	91,60	94,99	83,22	83,96	86,78	85,73	67,18	15,56	79,02	82,26	65,13	86,21	97,72	78,70

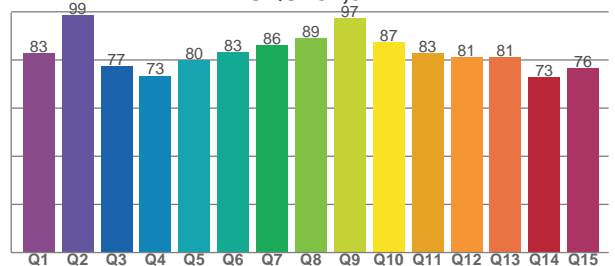
TM30 C values, 16 binned values out of total of 99 C values

C1	C2	C3	C4	C5	C6	C7	C8	C9	C10	C11	C12	C13	C14	C15	C16
76,27	83,38	75,46	85,93	88,76	93,81	90,59	88,59	84,61	73,49	73,80	82,62	84,67	86,29	76,34	75,72

CQS Q values

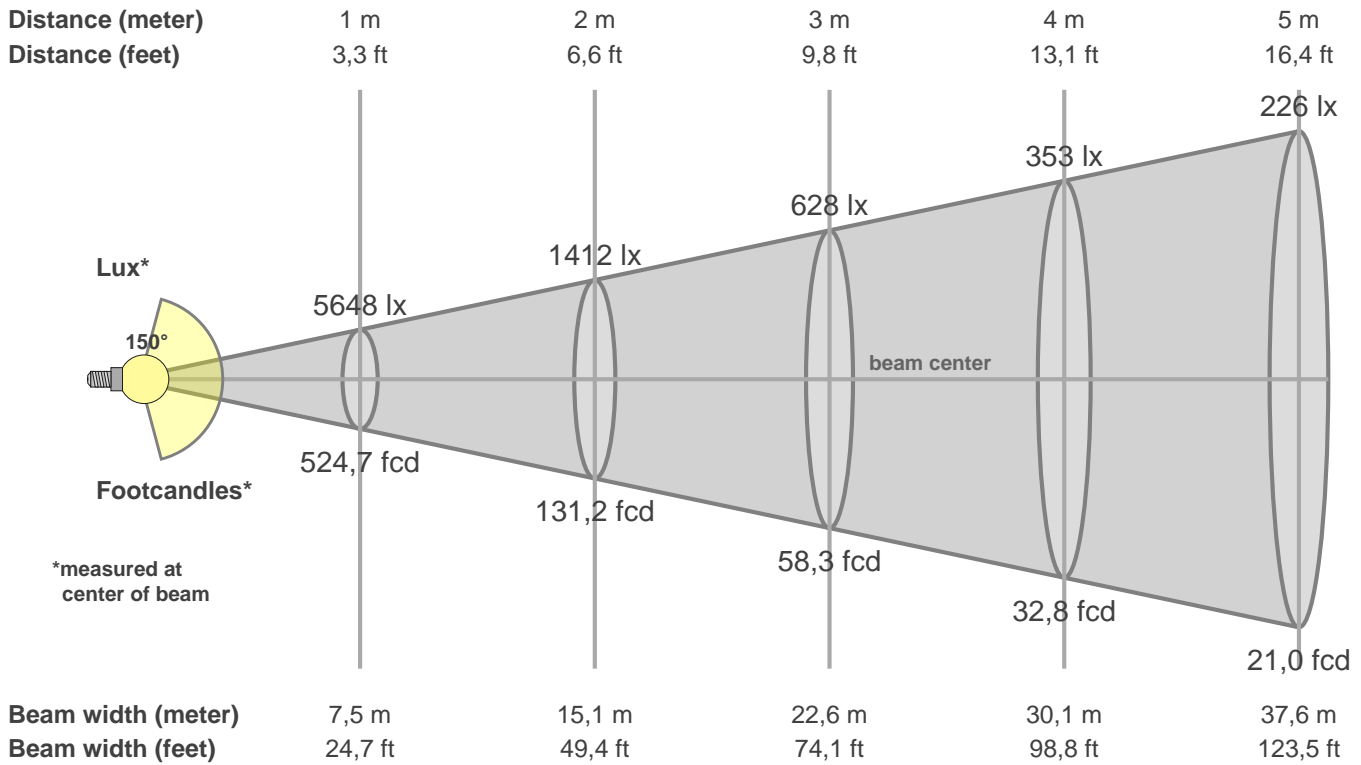
Q1	Q2	Q3	Q4	Q5	Q6	Q7	Q8	Q9	Q10	Q11	Q12	Q13	Q14	Q15
82,82	98,68	77,40	73,47	79,94	83,37	86,03	88,95	97,49	87,49	82,84	81,04	81,23	72,85	76,46

CQS: 81,8



Color parameters

CCT	CRI	CRI R9	TM30 Rf	TM30 Rg	CQS	x	y	u	v	Duv
4016 K	84,7	15,6	82,2	96,0	81,8	0,4	0,4	0,2	0,3	0,0042



Intensities in 0° c-plane

0°	9°	18°	27°	36°	45°	54°	63°	72°	81°	90°	99°	108°	117°	126°	135°	144°	153°	162°	171°
5648	5624	5670	5219	4668	4421	4388	4334	4383	3937	3188	2353	1638	990	410	121	97	98	101	105
100%	100%	100%	92%	83%	78%	78%	77%	78%	70%	56%	42%	29%	18%	7%	2%	2%	2%	2%	2%

Intensities in 90° c-plane

0°	9°	18°	27°	36°	45°	54°	63°	72°	81°	90°	99°	108°	117°	126°	135°	144°	153°	162°	171°
5648	5619	5433	5080	4578	3903	3058	2098	1134	404	95	77	78	85	89	90	96	95	105	108
100%	99%	96%	90%	81%	69%	54%	37%	20%	7%	2%	1%	1%	1%	2%	2%	2%	2%	2%	2%

Intensities in 180° c-plane

0°	9°	18°	27°	36°	45°	54°	63°	72°	81°	90°	99°	108°	117°	126°	135°	144°	153°	162°	171°
5648	5636	5461	4862	4478	4434	4379	4339	4262	3570	2835	1984	1252	600	191	114	106	102	103	105
100%	100%	97%	86%	79%	79%	78%	77%	75%	63%	50%	35%	22%	11%	3%	2%	2%	2%	2%	2%

Intensities in 270° c-plane

0°	9°	18°	27°	36°	45°	54°	63°	72°	81°	90°	99°	108°	117°	126°	135°	144°	153°	162°	171°
5648	5554	5290	4872	4304	3561	2658	1677	788	231	97	87	85	87	90	93	96	101	104	106
100%	98%	94%	86%	76%	63%	47%	30%	14%	4%	2%	2%	2%	2%	2%	2%	2%	2%	2%	2%

Beam angle 50%	Field angle 10%	Cutoff angle 2,5%	Intensity ratio in 120° cone	Intensity ratio in 90° cone
150,2°	206,9°	227,6°	54,5%	35,4%