

Эффективность света:

137 Lumen/Watt

Качество света:

CRI: 85,4

Цветовая температура:

4075 K

Поток: 13781 lm

Интенс.: 3807 cd

Мощн.: 101 W

КПД: 0,94

4 PLANES



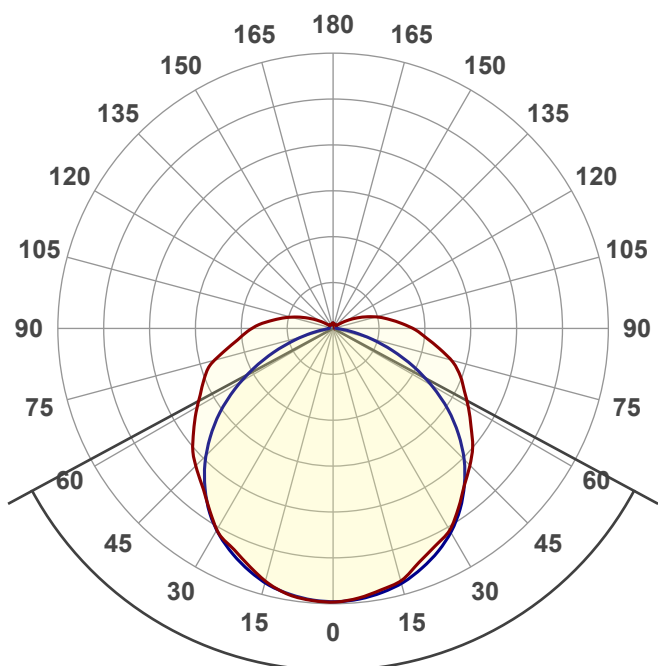
Название продукта:

ViLED CC

M1-MK-H-96-266.312.143-4-0-67

Дата и время:

13.12.2017 14:29:51



Угол пучка

123,3°

Цвет

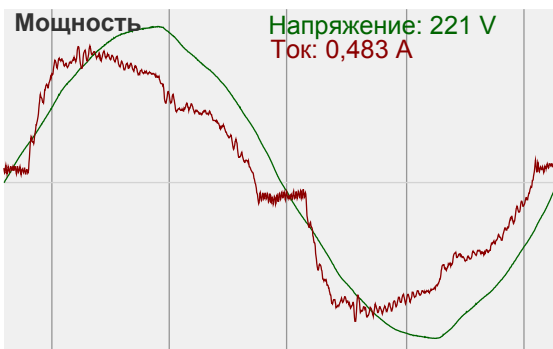
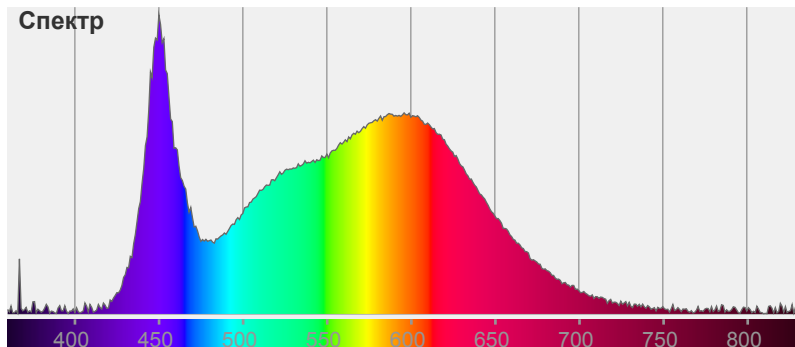


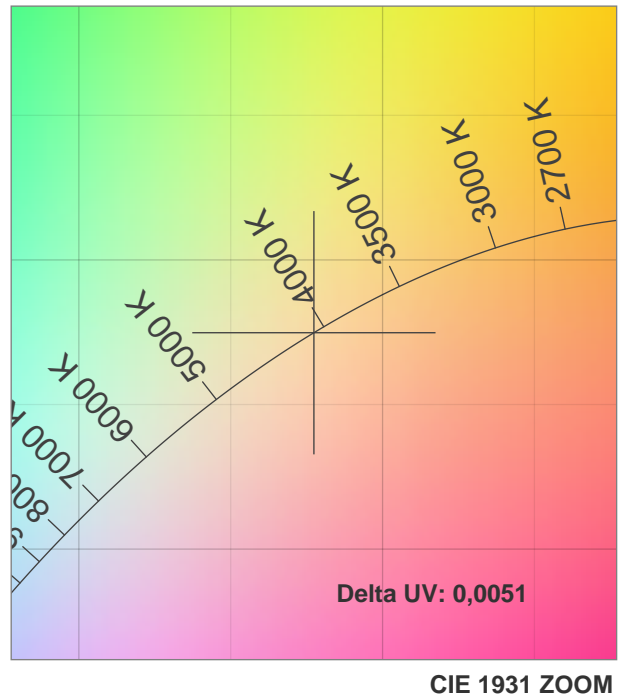
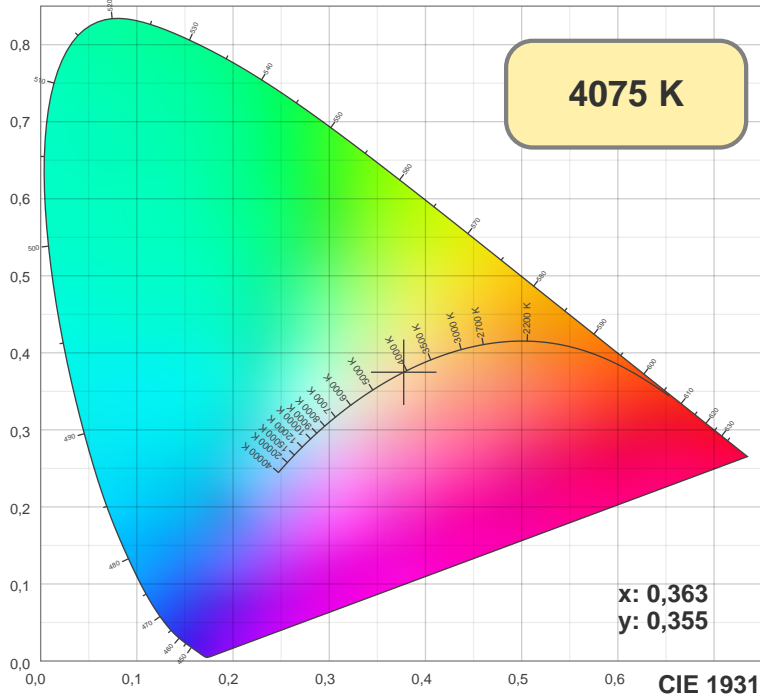
CIE1931

x: 0,363

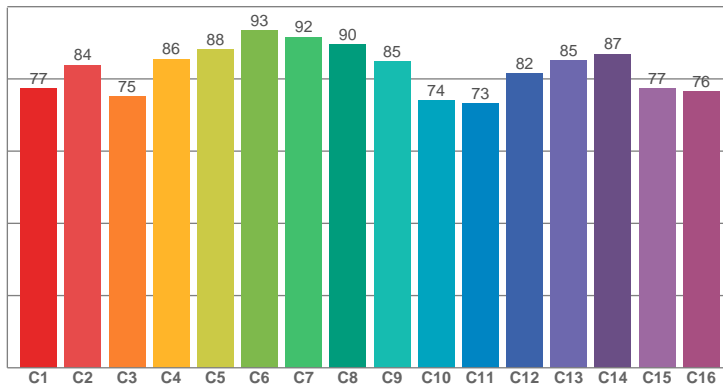
y: 0,355

Спектр

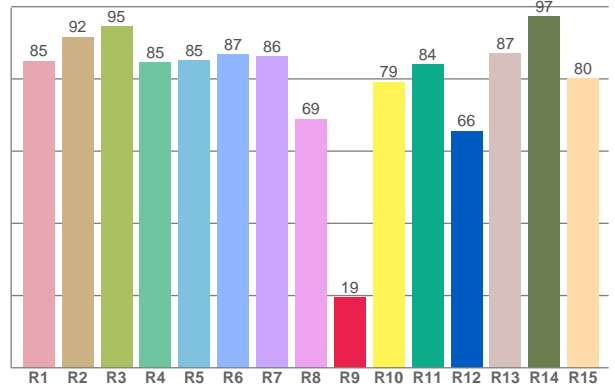




TM30: 82,5



CRI: 85,4 (R1-R8)



CRI R values, only R1-R8 are used to calculate final CRI value

R1	R2	R3	R4	R5	R6	R7	R8	R9	R10	R11	R12	R13	R14	R15
84,96	91,65	94,63	84,64	85,06	86,76	86,27	68,92	19,40	79,16	84,06	65,56	86,98	97,39	80,16

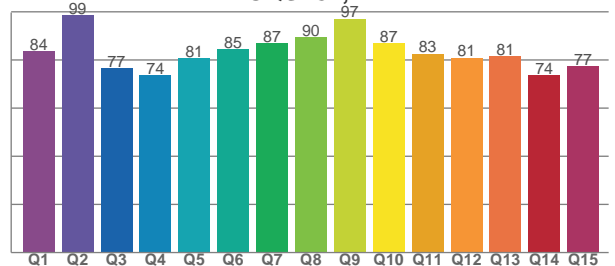
TM30 C values, 16 binned values out of total of 99 C values

C1	C2	C3	C4	C5	C6	C7	C8	C9	C10	C11	C12	C13	C14	C15	C16
77,42	83,88	75,12	85,54	88,11	93,40	91,63	89,64	84,81	74,02	73,28	81,50	85,06	86,90	77,38	76,50

CQS Q values

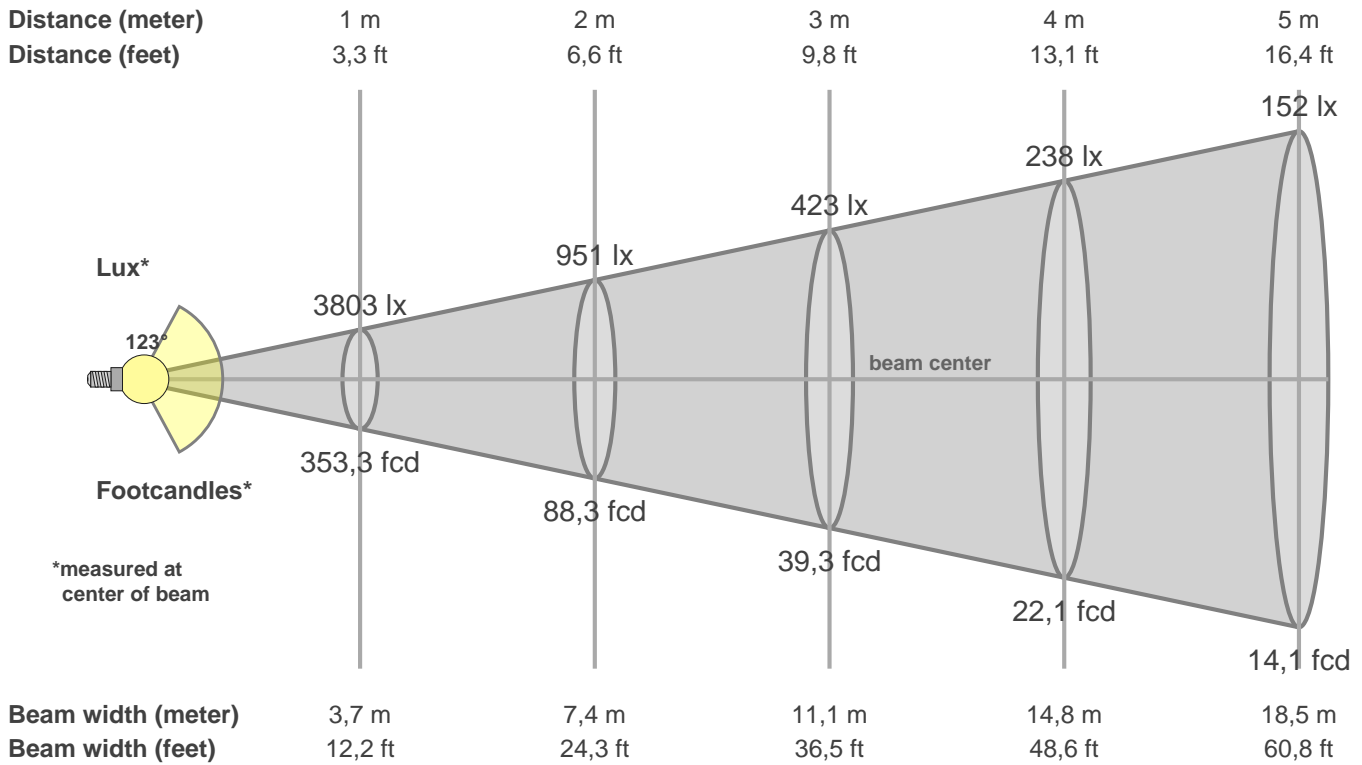
Q1	Q2	Q3	Q4	Q5	Q6	Q7	Q8	Q9	Q10	Q11	Q12	Q13	Q14	Q15
83,75	98,50	76,53	73,65	80,89	84,59	86,82	89,54	97,14	86,91	82,59	80,99	81,48	73,83	77,40

CQS: 82,1



Color parameters

CCT	CRI	CRI R9	TM30 Rf	TM30 Rg	CQS	x	y	u	v	Duv
4075 K	85,4	19,4	82,5	97,0	82,1	0,4	0,4	0,2	0,3	0,0051



Intensities in 0° c-plane

0°	9°	18°	27°	36°	45°	54°	63°	72°	81°	90°	99°	108°	117°	126°	135°	144°	153°	162°	171°
3803	3718	3540	3305	3004	2693	2378	2073	1808	1435	1111	796	528	282	109	61	61	63	64	67
100%	98%	93%	87%	79%	71%	63%	55%	48%	38%	29%	21%	14%	7%	3%	2%	2%	2%	2%	2%

Intensities in 90° c-plane

0°	9°	18°	27°	36°	45°	54°	63°	72°	81°	90°	99°	108°	117°	126°	135°	144°	153°	162°	171°
3803	3751	3609	3372	3031	2579	2010	1361	725	242	51	46	50	52	55	58	61	61	65	64
100%	99%	95%	89%	80%	68%	53%	36%	19%	6%	1%	1%	1%	1%	1%	2%	2%	2%	2%	2%

Intensities in 180° c-plane

0°	9°	18°	27°	36°	45°	54°	63°	72°	81°	90°	99°	108°	117°	126°	135°	144°	153°	162°	171°
3803	3760	3549	3312	2988	2702	2397	2082	1828	1429	1128	805	512	257	94	64	62	64	65	67
100%	99%	93%	87%	79%	71%	63%	55%	48%	38%	30%	21%	13%	7%	2%	2%	2%	2%	2%	2%

Intensities in 270° c-plane

0°	9°	18°	27°	36°	45°	54°	63°	72°	81°	90°	99°	108°	117°	126°	135°	144°	153°	162°	171°
3803	3749	3593	3339	2981	2498	1919	1260	634	197	61	55	53	51	54	56	59	60	65	66
100%	99%	94%	88%	78%	66%	50%	33%	17%	5%	2%	1%	1%	1%	1%	1%	2%	2%	2%	2%

Beam angle 50%	Field angle 10%	Cutoff angle 2,5%	Intensity ratio in 120° cone	Intensity ratio in 90° cone
123,3°	196,0°	221,9°	63,6%	42,4%