

Эффективность света:

131 Lumen/Watt

Качество света:

CRI: 83,4

Цветовая температура:

4176 K

Поток: 16417 lm

Интенс.: 5519 cd

Мощн.: 125 W

КПД: 0,96

4 PLANES



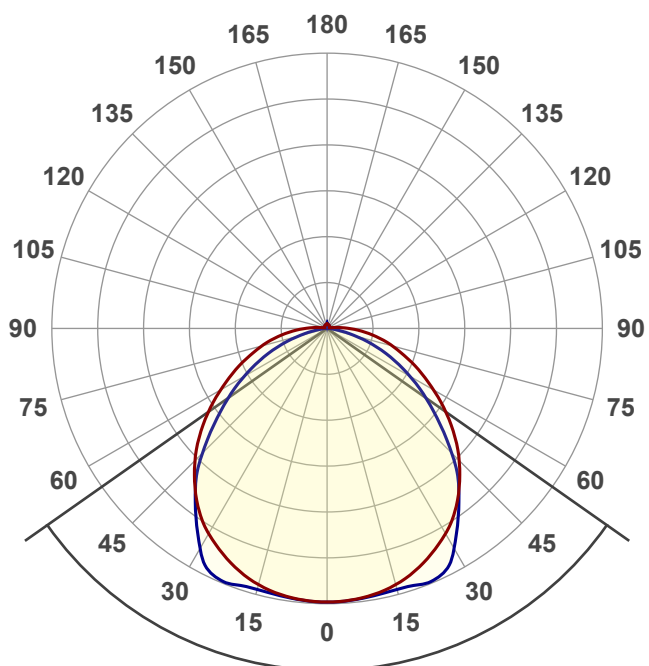
Название продукта:

ViLED CC

T1-Y-H-128-716.100.154-4-0-67

Дата и время:

13.02.2018 9:23:08



Угол пучка

109,8°

Цвет

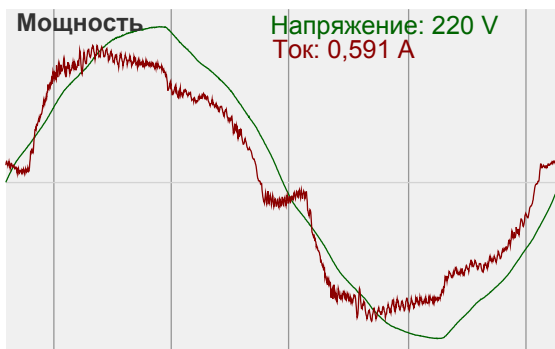
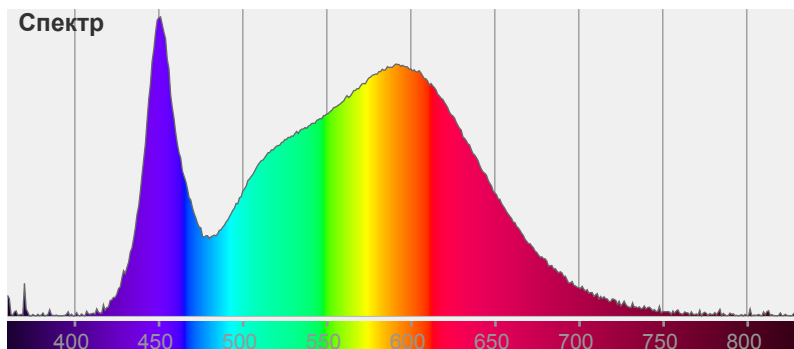


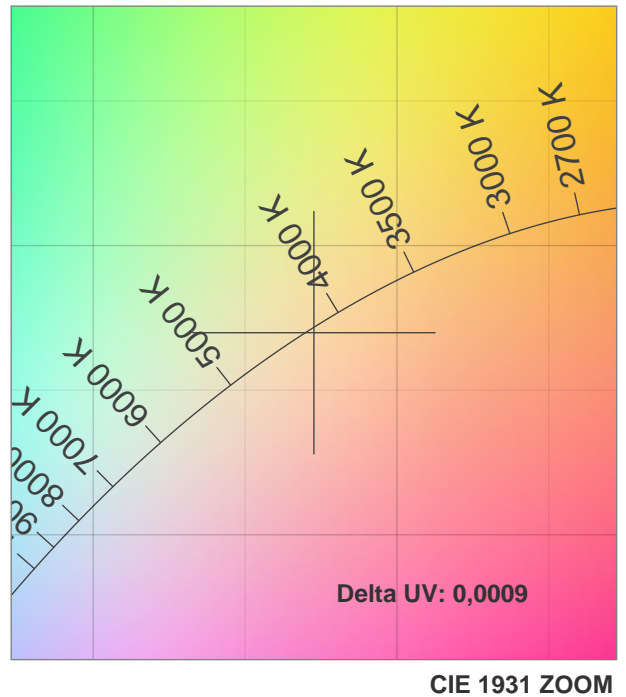
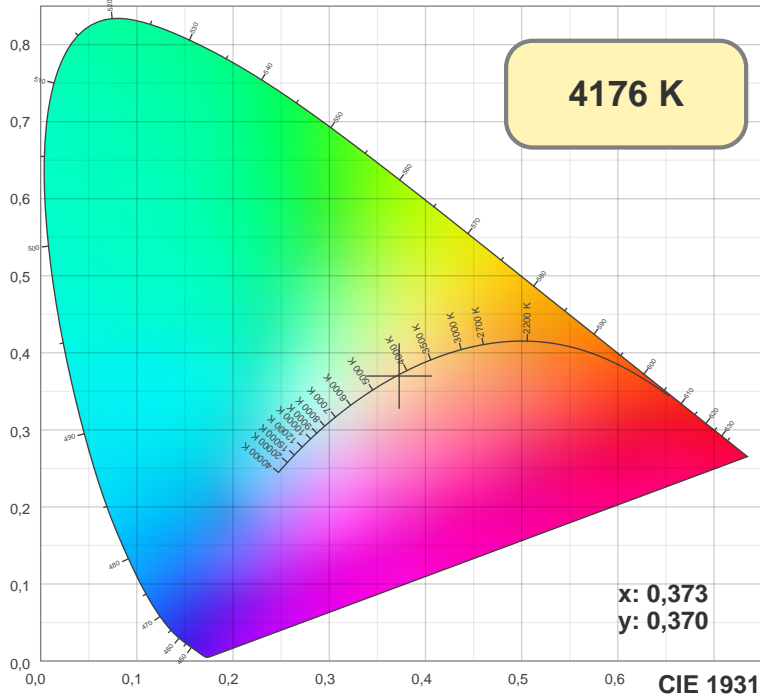
CIE1931

x: 0,373

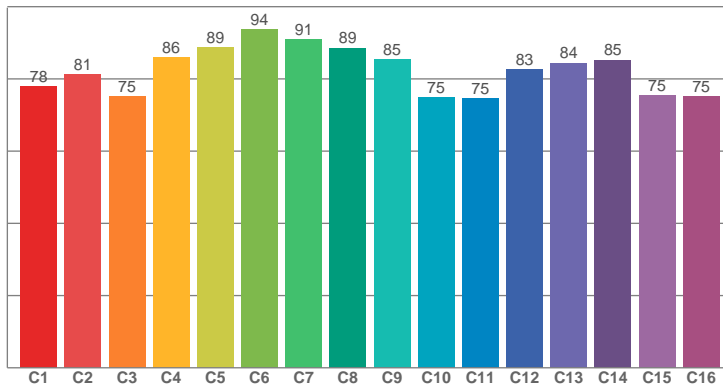
y: 0,370

Спектр

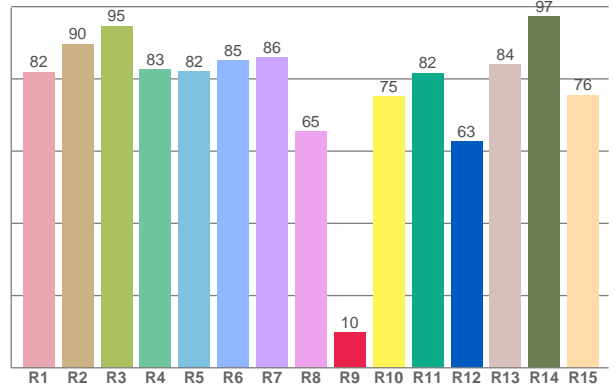




TM30: 82,1



CRI: 83,4 (R1-R8)



CRI R values, only R1-R8 are used to calculate final CRI value

R1	R2	R3	R4	R5	R6	R7	R8	R9	R10	R11	R12	R13	R14	R15
81,83	89,66	94,68	82,53	82,02	85,18	86,03	65,45	9,72	75,13	81,63	62,70	84,00	97,30	75,56

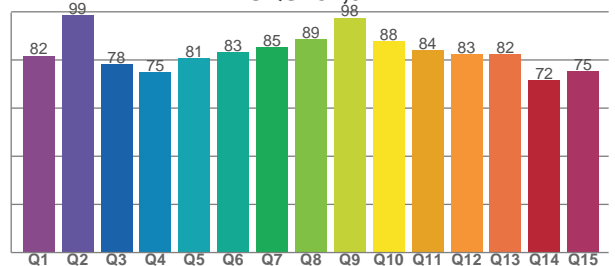
TM30 C values, 16 binned values out of total of 99 C values

C1	C2	C3	C4	C5	C6	C7	C8	C9	C10	C11	C12	C13	C14	C15	C16
77,92	81,22	75,10	86,00	88,68	93,72	90,84	88,58	85,34	74,88	74,57	82,53	84,46	85,22	75,47	75,10

CQS Q values

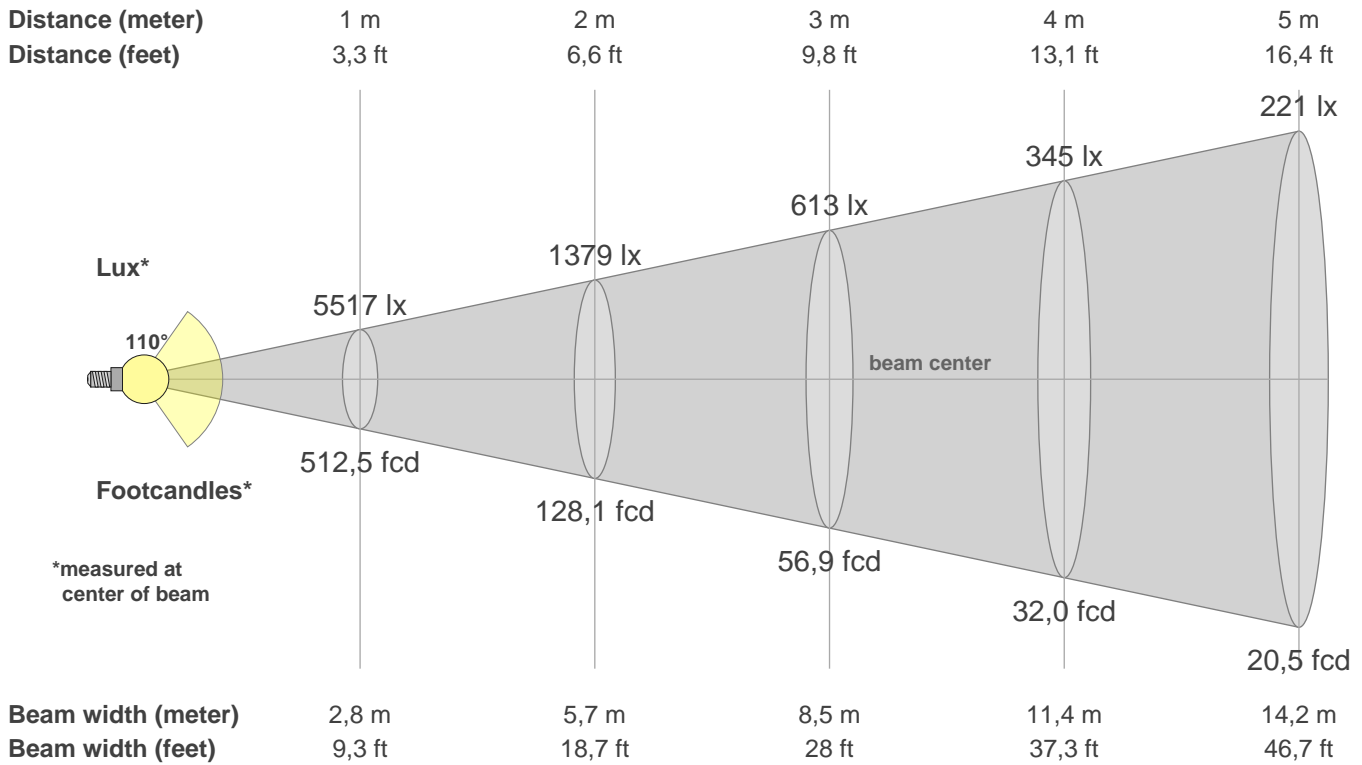
Q1	Q2	Q3	Q4	Q5	Q6	Q7	Q8	Q9	Q10	Q11	Q12	Q13	Q14	Q15
81,82	98,55	78,11	74,93	80,74	83,22	85,25	88,72	97,54	87,87	84,01	82,53	82,28	71,65	75,34

CQS: 82,0



Color parameters

CCT	CRI	CRI R9	TM30 Rf	TM30 Rg	CQS	x	y	u	v	Duv
4176 K	83,4	9,7	82,1	95,7	82,0	0,4	0,4	0,2	0,3	0,0009



Intensities in 0° c-plane

0°	5°	10°	15°	20°	25°	30°	35°	40°	45°	50°	55°	60°	65°	70°	75°	80°	85°	90°	95°
5517	5496	5442	5344	5194	4999	4773	4491	4146	3766	3352	2918	2484	2081	1704	1366	1043	733	452	229
100%	100%	99%	97%	94%	91%	87%	81%	75%	68%	61%	53%	45%	38%	31%	25%	19%	13%	8%	4%

Intensities in 90° c-plane

0°	5°	10°	15°	20°	25°	30°	35°	40°	45°	50°	55°	60°	65°	70°	75°	80°	85°	90°	95°
5517	5504	5474	5457	5489	5441	5109	4616	4120	3555	2963	2430	1935	1468	1026	615	293	108	51	45
100%	100%	99%	99%	99%	99%	93%	84%	75%	64%	54%	44%	35%	27%	19%	11%	5%	2%	1%	1%

Intensities in 180° c-plane

0°	5°	10°	15°	20°	25°	30°	35°	40°	45°	50°	55°	60°	65°	70°	75°	80°	85°	90°	95°
5517	5496	5442	5344	5194	4999	4773	4491	4146	3766	3352	2918	2484	2081	1704	1366	1043	733	452	229
100%	100%	99%	97%	94%	91%	87%	81%	75%	68%	61%	53%	45%	38%	31%	25%	19%	13%	8%	4%

Intensities in 270° c-plane

0°	5°	10°	15°	20°	25°	30°	35°	40°	45°	50°	55°	60°	65°	70°	75°	80°	85°	90°	95°
5517	5504	5474	5457	5489	5441	5109	4616	4120	3555	2963	2430	1935	1468	1026	615	293	108	51	45
100%	100%	99%	99%	99%	99%	93%	84%	75%	64%	54%	44%	35%	27%	19%	11%	5%	2%	1%	1%

Beam angle 50%	Field angle 10%	Cutoff angle 2,5%	Intensity ratio in 120° cone	Intensity ratio in 90° cone
109,8°	163,6°	183,5°	77,6%	54,0%