

Эффективность света:

114 Lumen/Watt

Качество света:

CRI: 85,4

Цветовая температура:

4089 K

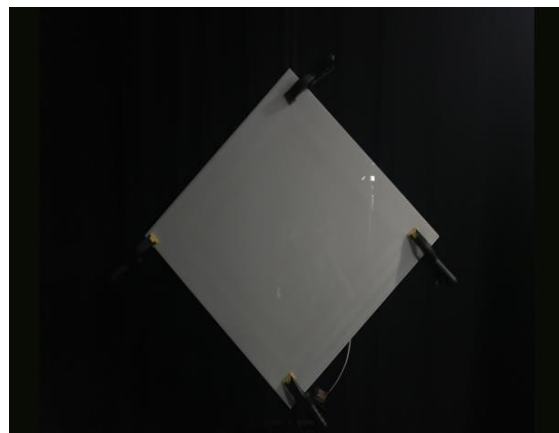
Поток: 5333 lm

Интенс.: 1493 cd

Мощн.: 46,7 W

КПД: 0,92

4 PLANES



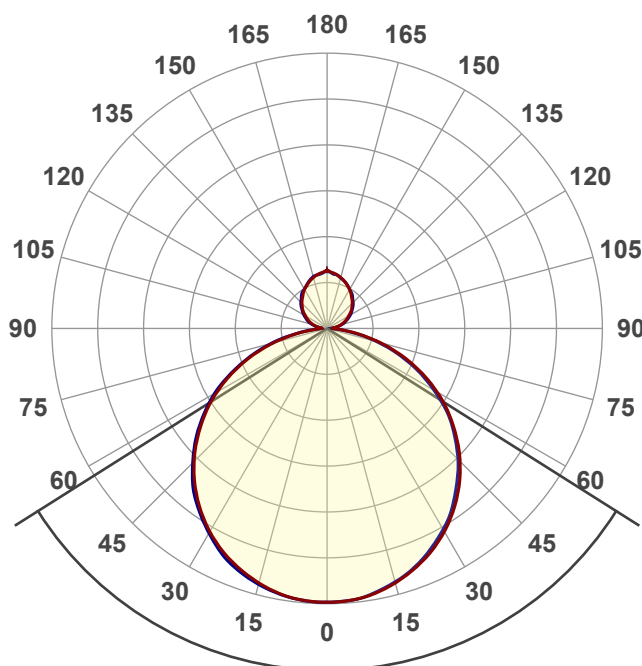
Название продукта:

ViLED CC

02-У-М-48-590.590.15-4-0-65

Дата и время:

28.11.2017 15:35:18



Угол пучка

115,4°

Цвет

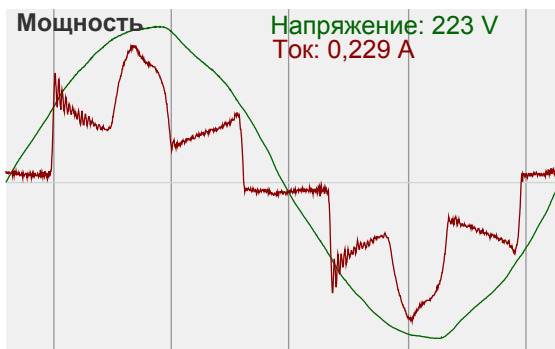
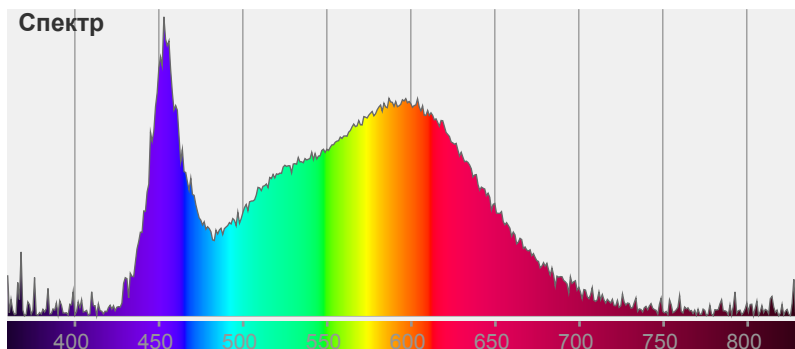


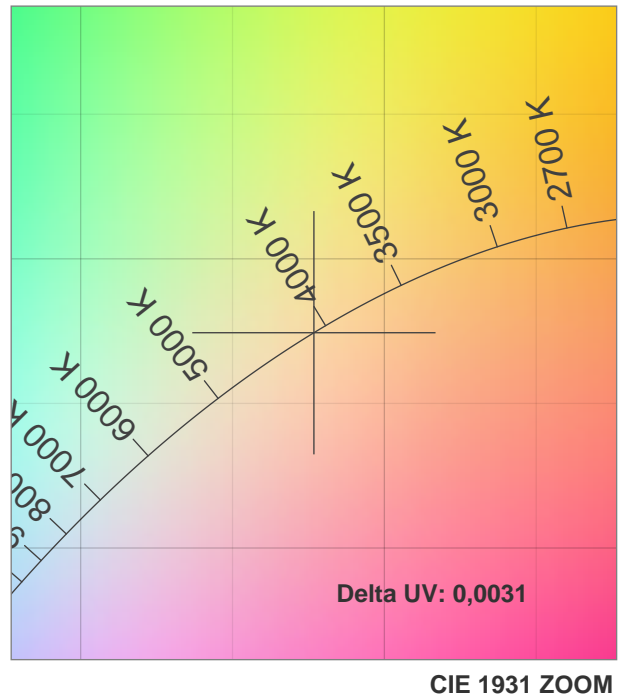
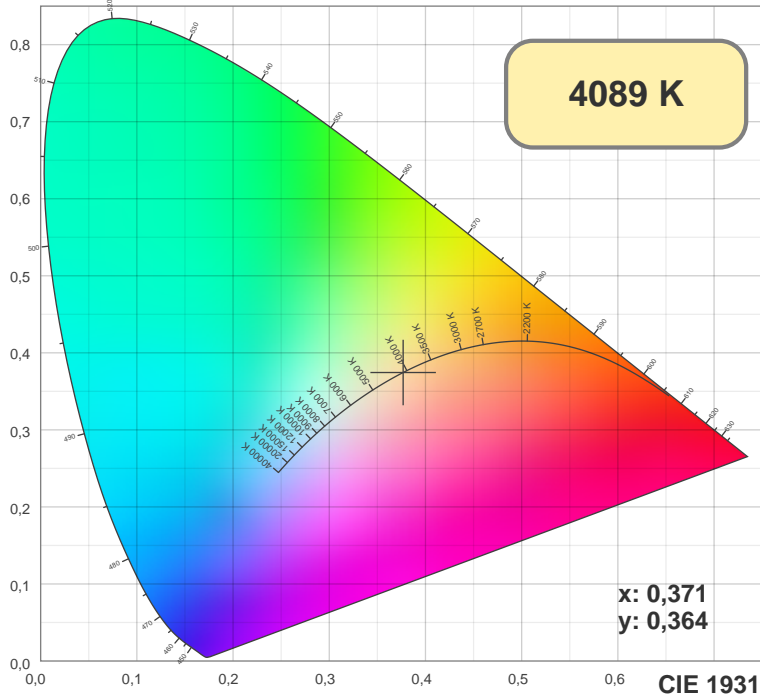
CIE1931

x: 0,371

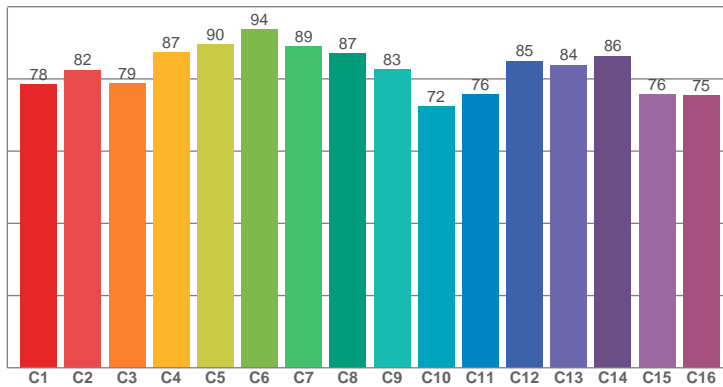
y: 0,364

Спектр

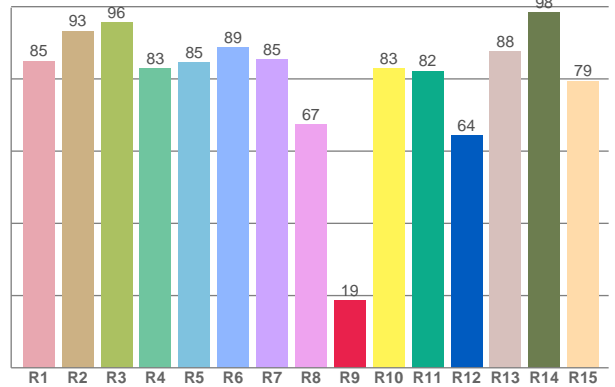




TM30: 82,5



CRI: 85,4 (R1-R8)



CRI R values, only R1-R8 are used to calculate final CRI value

R1	R2	R3	R4	R5	R6	R7	R8	R9	R10	R11	R12	R13	R14	R15
84,96	93,32	95,61	82,99	84,60	88,79	85,43	67,36	18,75	82,85	82,24	64,42	87,68	98,44	79,48

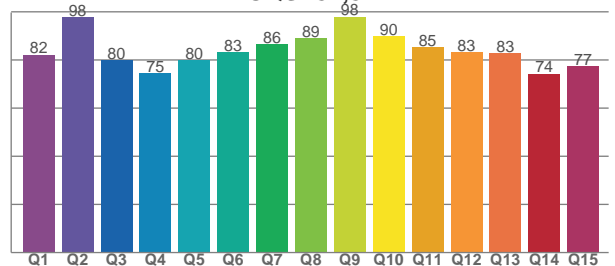
TM30 C values, 16 binned values out of total of 99 C values

C1	C2	C3	C4	C5	C6	C7	C8	C9	C10	C11	C12	C13	C14	C15	C16
78,40	82,48	78,85	87,38	89,52	93,76	89,02	87,07	82,56	72,29	75,73	85,01	83,87	86,39	75,64	75,45

CQS Q values

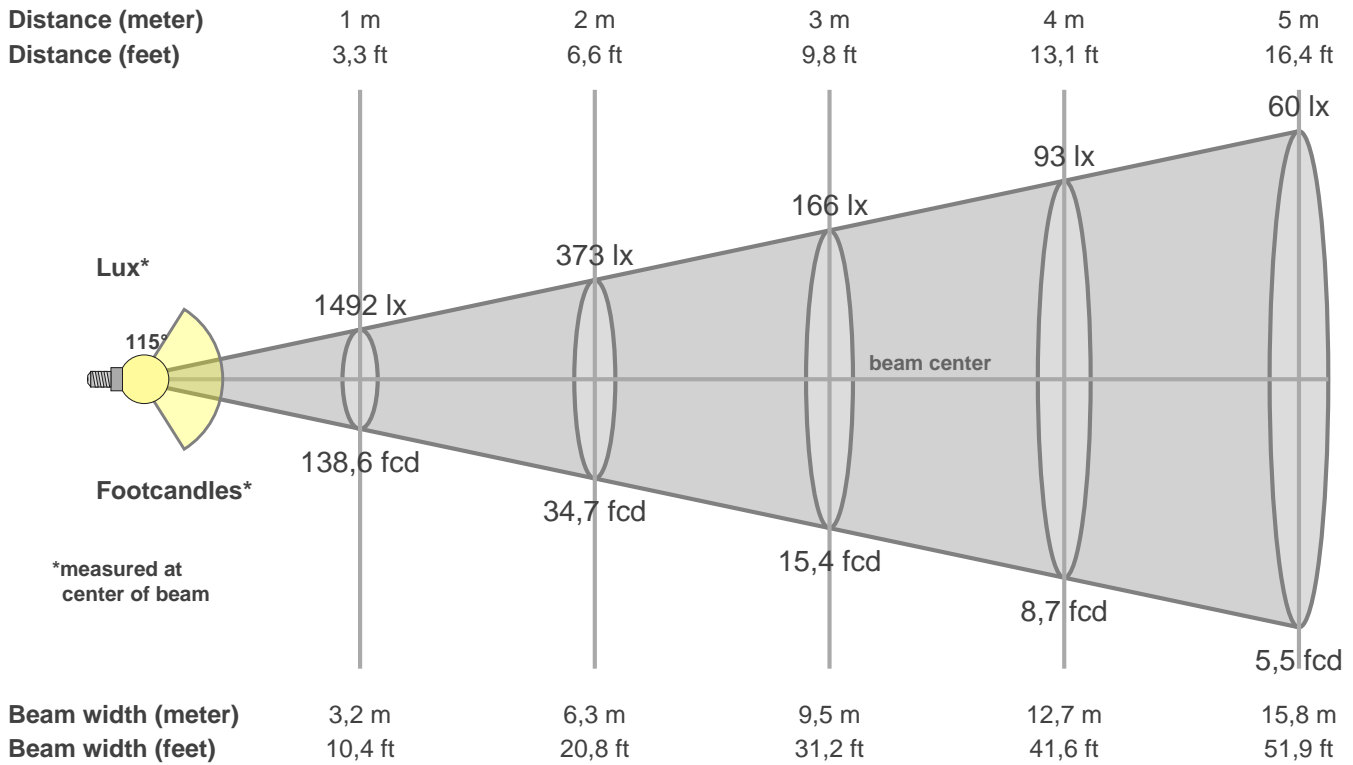
Q1	Q2	Q3	Q4	Q5	Q6	Q7	Q8	Q9	Q10	Q11	Q12	Q13	Q14	Q15
82,19	97,87	79,79	74,66	80,00	83,17	86,48	89,18	98,01	89,93	85,27	83,23	82,93	74,29	77,31

CQS: 82,8



Color parameters

CCT	CRI	CRI R9	TM30 Rf	TM30 Rg	CQS	x	y	u	v	Duv
4089 K	85,4	18,8	82,5	94,9	82,8	0,4	0,4	0,2	0,3	0,0031



Intensities in 0° c-plane

0°	9°	18°	27°	36°	45°	54°	63°	72°	81°	90°	99°	108°	117°	126°	135°	144°	153°	162°	171°
1492	1475	1412	1318	1189	1025	833	618	382	156	37	53	90	125	162	194	224	254	280	300
100%	99%	95%	88%	80%	69%	56%	41%	26%	10%	2%	4%	6%	8%	11%	13%	15%	17%	19%	20%

Intensities in 90° c-plane

0°	9°	18°	27°	36°	45°	54°	63°	72°	81°	90°	99°	108°	117°	126°	135°	144°	153°	162°	171°
1492	1471	1407	1305	1172	1010	823	598	364	143	31	55	96	133	168	200	231	255	279	297
100%	99%	94%	87%	79%	68%	55%	40%	24%	10%	2%	4%	6%	9%	11%	13%	15%	17%	19%	20%

Intensities in 180° c-plane

0°	9°	18°	27°	36°	45°	54°	63°	72°	81°	90°	99°	108°	117°	126°	135°	144°	153°	162°	171°
1492	1475	1412	1318	1189	1025	833	618	382	156	37	53	90	125	162	194	224	254	280	300
100%	99%	95%	88%	80%	69%	56%	41%	26%	10%	2%	4%	6%	8%	11%	13%	15%	17%	19%	20%

Intensities in 270° c-plane

0°	9°	18°	27°	36°	45°	54°	63°	72°	81°	90°	99°	108°	117°	126°	135°	144°	153°	162°	171°
1492	1477	1424	1330	1201	1037	846	631	394	164	39	55	99	133	168	202	235	257	284	297
100%	99%	95%	89%	80%	69%	57%	42%	26%	11%	3%	4%	7%	9%	11%	14%	16%	17%	19%	20%

Beam angle 50%	Field angle 10%	Cutoff angle 2,5%	Intensity ratio in 120° cone	Intensity ratio in 90° cone
115,4°	360,0°	360,0°	64,4%	43,4%