

Эффективность света:

**121 Lumen/Watt**

Качество света:

**CRI: 83,7**

Цветовая температура:

**4179 K**

**Поток: 11852 lm**

**Интенс.: 4429 cd**

**Мощн.: 98,2 W**

**КПД: 0,97**

4 PLANES



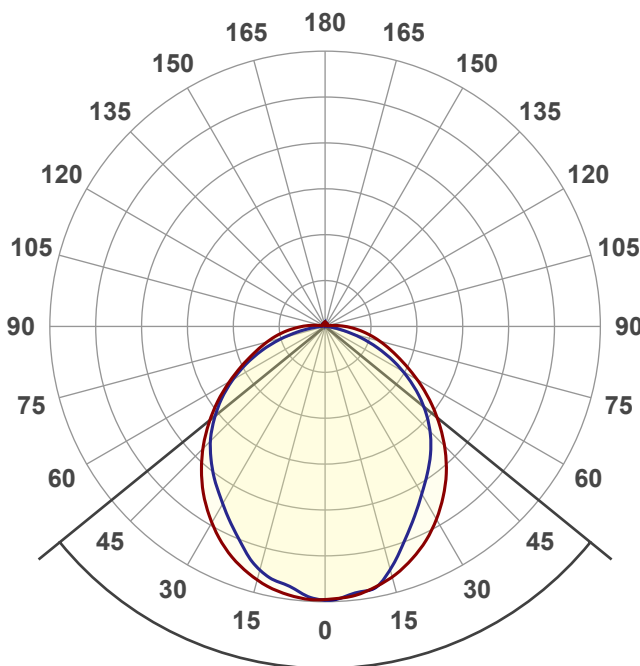
Название продукта:

**ViLED CC**

**T1-Y-H-96-523.100.151-4-0-67**

Дата и время:

**06.02.2018 10:20:14**



Угол пучка

**101,8°**

Цвет

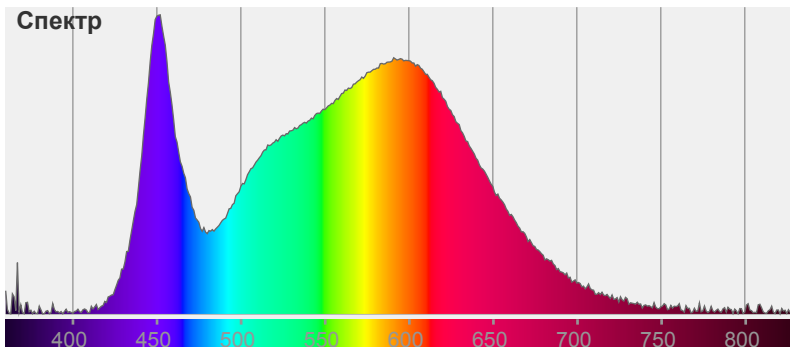


CIE1931

x: 0,372

y: 0,369

Спектр

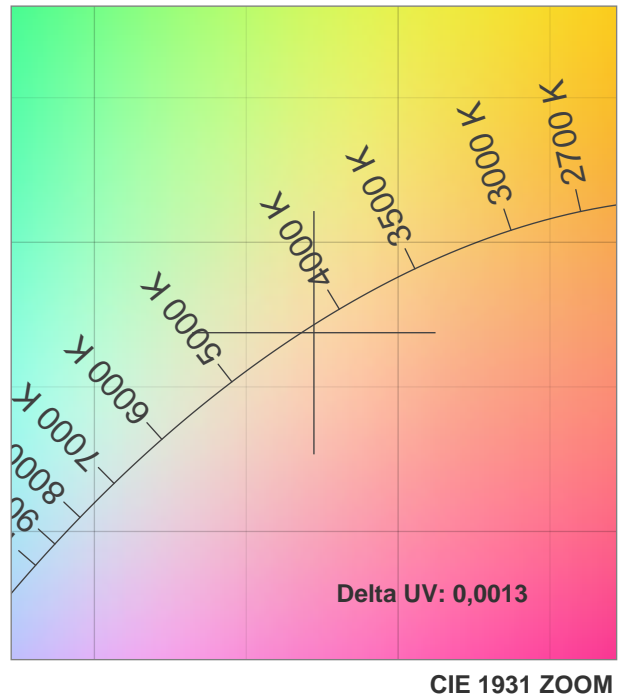
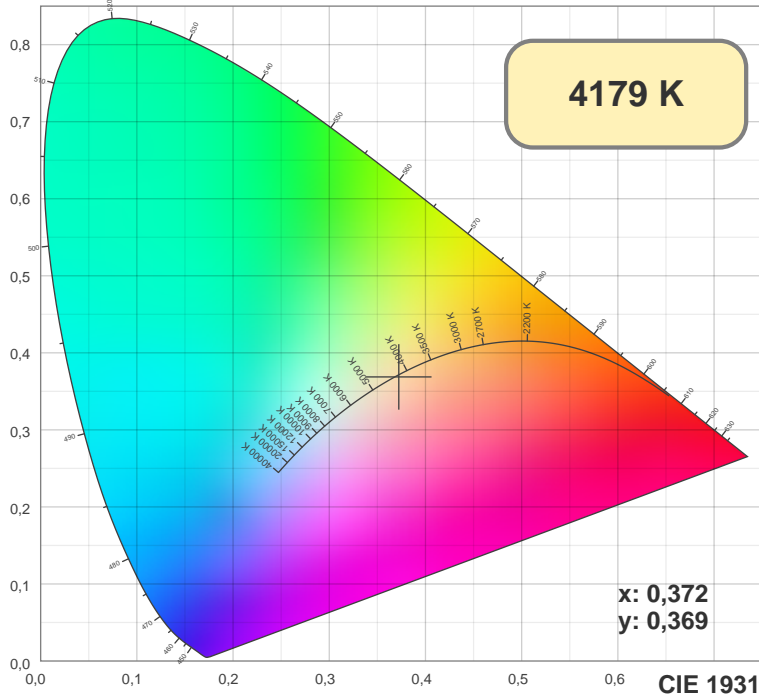


Мощность

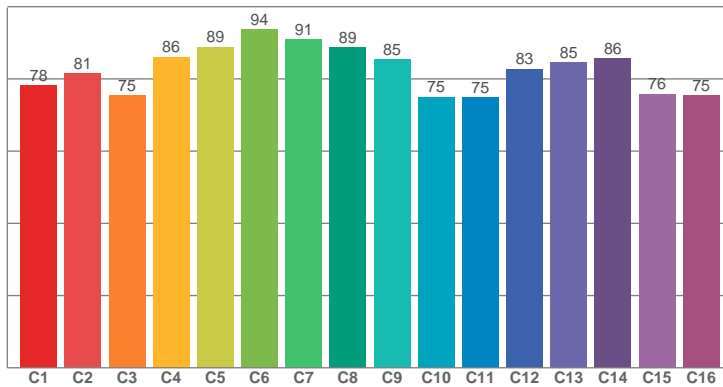
Напряжение: 217 V

Ток: 0,466 A

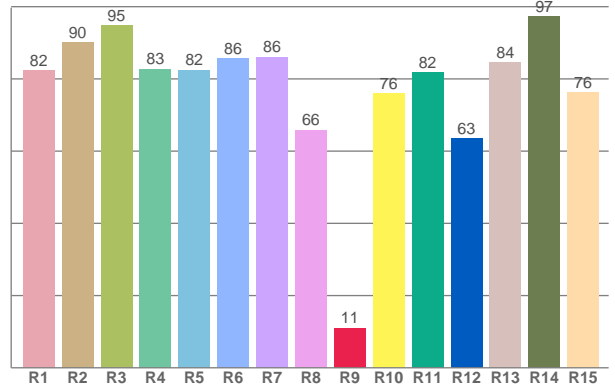




TM30: 82,3



CRI: 83,7 (R1-R8)



CRI R values, only R1-R8 are used to calculate final CRI value

R1	R2	R3	R4	R5	R6	R7	R8	R9	R10	R11	R12	R13	R14	R15
82,40	90,05	94,79	82,78	82,45	85,60	86,07	65,83	11,03	75,91	81,86	63,43	84,49	97,38	76,20

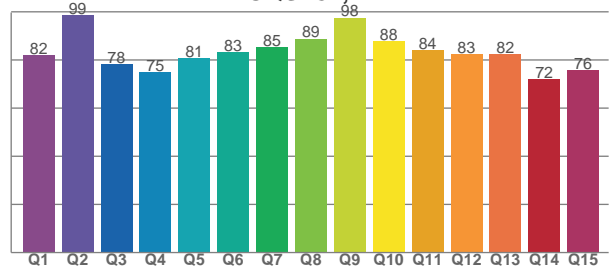
TM30 C values, 16 binned values out of total of 99 C values

C1	C2	C3	C4	C5	C6	C7	C8	C9	C10	C11	C12	C13	C14	C15	C16
78,16	81,44	75,39	86,12	88,82	93,79	90,89	88,72	85,40	75,00	74,79	82,75	84,61	85,58	75,81	75,46

CQS Q values

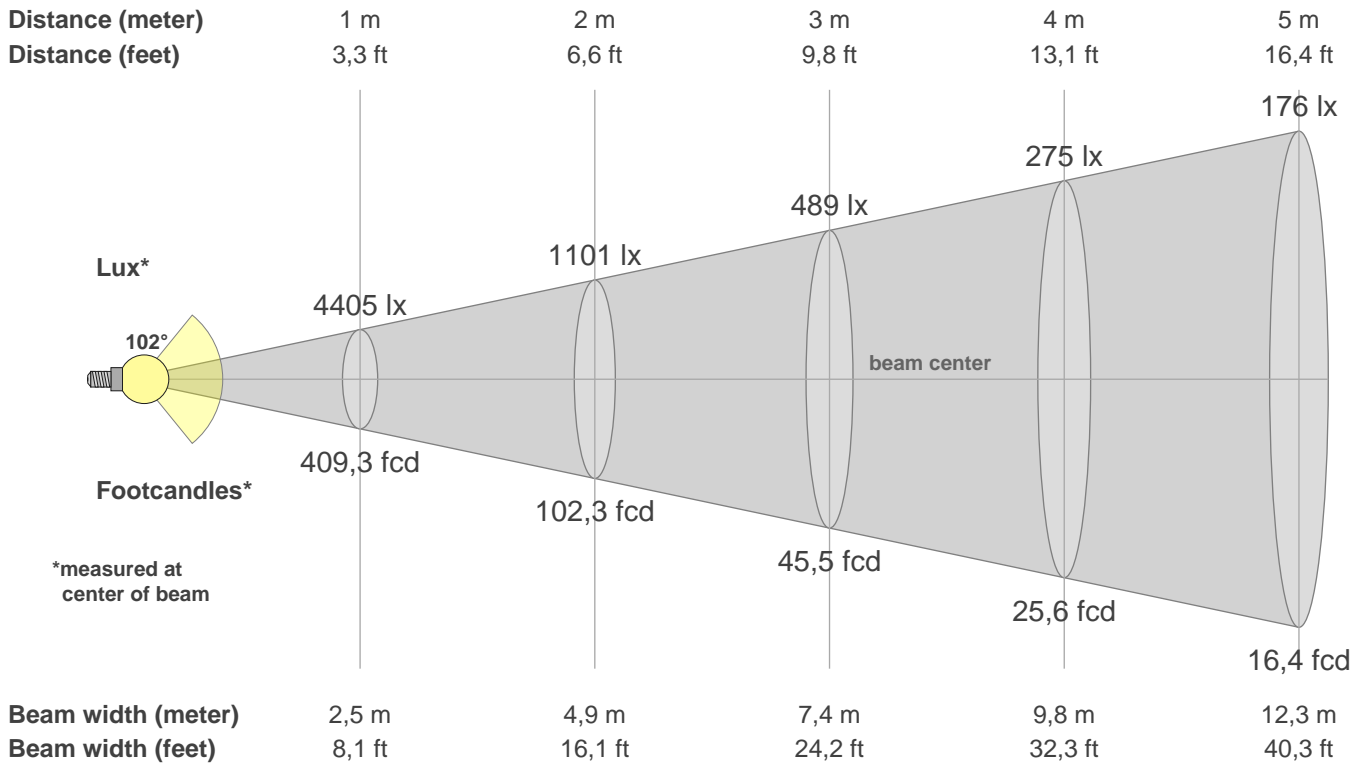
Q1	Q2	Q3	Q4	Q5	Q6	Q7	Q8	Q9	Q10	Q11	Q12	Q13	Q14	Q15
82,03	98,59	78,25	74,98	80,80	83,40	85,47	88,82	97,57	87,94	84,03	82,55	82,39	72,02	75,65

CQS: 82,1



Color parameters

CCT	CRI	CRI R9	TM30 Rf	TM30 Rg	CQS	x	y	u	v	Duv
4179 K	83,7	11,0	82,3	95,8	82,1	0,4	0,4	0,2	0,3	0,0013



**Intensities in 0° c-plane**

0°	5°	10°	15°	20°	25°	30°	35°	40°	45°	50°	55°	60°	65°	70°	75°	80°	85°	90°	95°
4405	4381	4304	4187	4026	3832	3597	3332	3047	2728	2393	2055	1721	1409	1143	914	704	509	329	179
100%	99%	98%	95%	91%	87%	82%	76%	69%	62%	54%	47%	39%	32%	26%	21%	16%	12%	7%	4%

**Intensities in 90° c-plane**

0°	5°	10°	15°	20°	25°	30°	35°	40°	45°	50°	55°	60°	65°	70°	75°	80°	85°	90°	95°
4405	4358	4301	4059	3717	3405	3124	2885	2652	2396	2108	1790	1453	1110	772	458	209	71	34	34
100%	99%	98%	92%	84%	77%	71%	65%	60%	54%	48%	41%	33%	25%	18%	10%	5%	2%	1%	1%

**Intensities in 180° c-plane**

0°	5°	10°	15°	20°	25°	30°	35°	40°	45°	50°	55°	60°	65°	70°	75°	80°	85°	90°	95°
4405	4401	4341	4234	4084	3891	3657	3396	3104	2791	2458	2122	1784	1472	1200	973	766	561	372	213
100%	100%	99%	96%	93%	88%	83%	77%	70%	63%	56%	48%	40%	33%	27%	22%	17%	13%	8%	5%

**Intensities in 270° c-plane**

0°	5°	10°	15°	20°	25°	30°	35°	40°	45°	50°	55°	60°	65°	70°	75°	80°	85°	90°	95°
4405	4325	4199	4062	3823	3557	3309	3085	2858	2619	2340	2044	1720	1382	1037	695	388	171	64	42
100%	98%	95%	92%	87%	81%	75%	70%	65%	59%	53%	46%	39%	31%	24%	16%	9%	4%	1%	1%

Beam angle 50%	Field angle 10%	Cutoff angle 2,5%	Intensity ratio in 120° cone	Intensity ratio in 90° cone
101,8°	165,6°	186,7°	75,5%	52,5%