

IMPORTANT: READ BEFORE USING

1. Description

This pump has a 304 stainless steel body and PTFE internal parts, is ideal for transferring soluble, corrosive, volatile and aggressive chemicals, such as Esters, Alcohols, Alkali, Strong Acids, Hydrocarbons and other fluids are compatible with pump materials of construction. Also suitable for transferring Petroleum based fluids, such as Automotive Additives, Diesel, Lube Oils, Kerosene, Solvents, Thinner, Benzene, Cleaning Solutions, Fuel Oils, Transmission Fluid, and water based chemicals, Anti-Freeze, Soaps, Waxes, etc. This pump is supplied with a 2" bung adapter to fit most 15, 30 and 55 gallon drums. Dispenses approximately 20 oz per full stroke. Removable discharge spout can be rotated 180° and is threaded to fit garden hoses.

2. Technical data

Pump Type	Lift Action
Flow	20 oz / Stroke
Maximum Fluid Temperature	140° F / 60° C
Bung Adapter	2" (PP)
Suction Tube Length	37-1/4"
Inlet	1-1/2" O.D.
Outlet	3/4" O.D. Curved Spout
Wetted Materials of Construction	304SS & PTFE
Maximum Viscosity	2,000 SSU

3. General Safety Information

Always carefully read, thoroughly understand and follow the pump operating instructions. Use this pump correctly and with care for the purpose for which it is intended. Failure to do may cause damage or personal injury, and will invalidate the warranty. Retain instructions for future reference.

Contact your chemical or fluid supplier to check for compatibility with pump prior to installation and operation.

Prior to use, always carefully and thoroughly read and understand the OSHA information contained in the Safety Data Sheet supplied for the chemical which is to be pumped.

Wear protective clothing (goggles, face masks, long sleeves, long pants, gloves, aprons, etc.) as set forth in the OSHA Safety Data Sheet when pumping any hazardous chemicals.

When using flammable liquids, pump containers should be grounded to avoid static electricity.

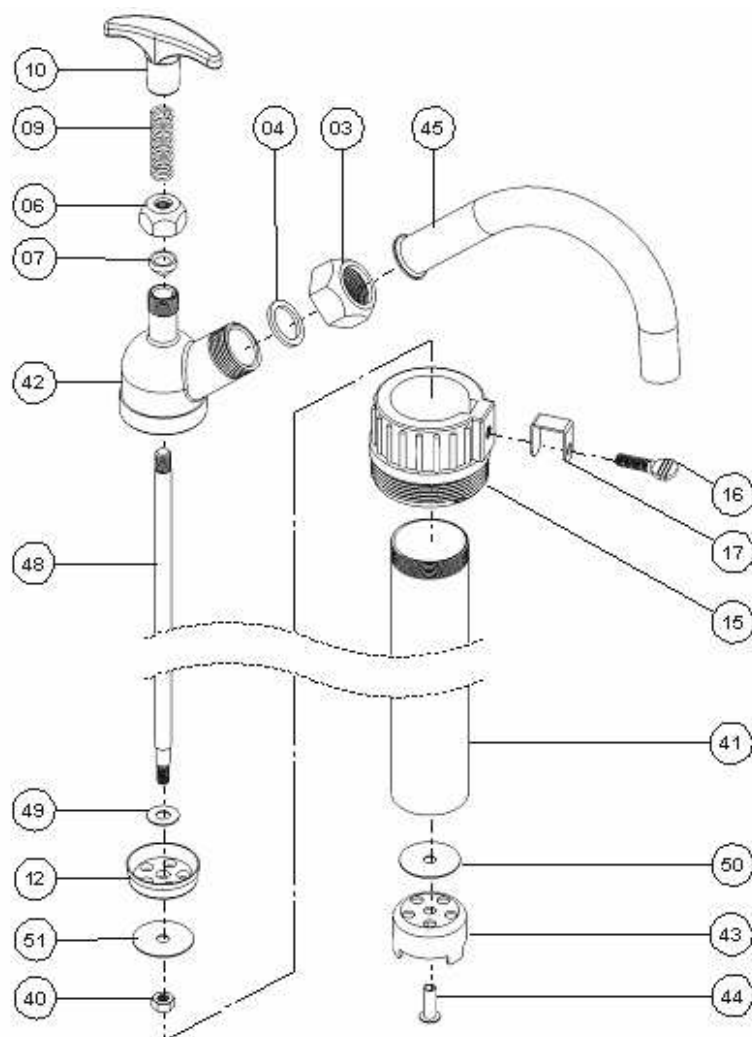
Any pump used for transferring flammable liquids must be stored in a ventilated area after use.

Pump should be washed out before it is used since processing lubricants may contaminate the fluids.

Prior to use, inspect your pump thoroughly verifying its proper assembly.

If pump is removed from drum, it should be thoroughly rinsed in a liquid that is compatible with both the pump and fluid.

4. Parts Illustration



Parts List

Ref No.	Description	Ref No.	Description
3	Coupling Nut	41	Cylinder
4	Spout Seal	42	Cylinder Cap
6	Packing Nut	43	Lower Piston
7	Packing	44	Rivet
9	Spring	45	Discharge Spout
10	Handle	48	Piston Rod
12	Upper Piston	49	Washer
15	Bung Adapter	50	Piston Washer
16	Thumb Screw	51	Piston Washer
17	Set Plate		
40	Hex Nut		

5. Assembly and Installation

Check to see if all parts are included.

Install discharge spout (Ref No. 45) and make sure the spout seal (Ref No. 4) is inserted. Tighten firmly to make sure discharge spout is secure.

Remove the bung adapter (Ref No. 15) and install on the pump body with threaded end pointing down.

Insert pump assembly into 2" opening of 55 gallon drum and screw adapter clockwise into drum.

Adjust pump to the height desired, and then tighten thumb screw (Ref No. 16) in adapter until hand tight. Do not use wrench or tool to tighten thumb screw.

The pump is now ready for operation. Liquid should begin to flow after 3 strokes. If any leakage occurs, simply tighten packing nut (Ref No. 6) located on top of pump. Over tightening this nut will damage the packing (Ref No. 7), make the pump difficult to operate, and may strip nut.

Pressol Schmiergeräte GmbH

Parkstraße 7

93167 Falkenstein | Germany

Tel. +49 9462 17-0

Fax +49 9462 17-208

info@pressol.com

www.pressol.com