



ALCHEMY  
ingredients

---

INSTATHIX®

---

Рамочные  
рецептуры

(ПРИМЕЧАНИЕ. РЕКОМЕНДУЕМЫЙ МЕТОД, МОЖНО ИСПОЛЬЗОВАТЬ ДРУГИЕ ПОДХОДЯЩИЕ СПОСОБЫ)

## ШАГ 1



## ШАГ 2



## ШАГ 3

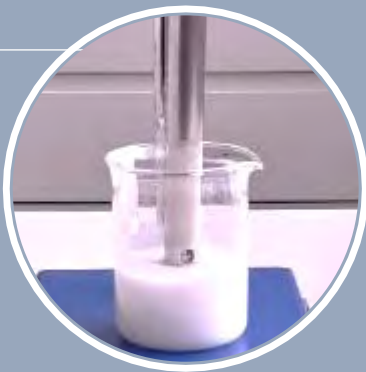


Взвесить водную и масляную фазы в отдельные стаканы. Если в масляной фазе используются твердые вещества, их необходимо расплавить. Нагреть водную фазу до 70°C.

Добавьте Instatix® в масляную фазу и перемешайте, чтобы порошок диспергировал. Если масла только жидкие, можно работать при комнатной температуре.

Добавьте горячую водную фазу к масляной фазе и хорошо перемешайте. Убедитесь, что температура смеси выше 70°C, и оставьте на несколько минут.

## ШАГ 4



## ШАГ 5



## ШАГ 6



Гомогенизируйте в течение нескольких минут до образования густого крема.

Остудить в мешалке и добавить термочувствительные ингредиенты.

Получается эмульсия, окончательная вязкость достигается через 24 часа.



# Conditioning Co-Wash

A low surfactant, mild product to prevent dry hair and improve condition.

ALCHEMY  
ingredients

## Ingredients

Phase	Trade Name	INCI name	% w/w	Supplier
A	Instathix®	Xanthan Gum, Sodium Stearoyl Lactylate, Tapioca Starch, Algin	2.50	Alchemy Ingredients
A	CCT	Caprylic/Capric Triglycerides	2.00	
A	Avocado Oil	Persea Gratissima (Avocado) Oil	0.50	
A	Hemp Seed Oil	Cannabis Sativa Seed Oil	0.50	
B	Water	Aqua	73.80	
B	Glycerine	Glycerine	5.00	
C	Rainforest Harvest™ AF	Glycerin, Aqua, Syzygium Leuhmanii Fruit Extract, Acronychia Acidula Fruit Extract, Davidsonia Pruriens Fruit Extract	1.00	Southern Cross Botanicals
C	Decyl Glucoside	Decyl Glucoside	10.00	
C	Sophocoll®	Aqua, Sodium Cocoyl Collagen Amino Acids, Glycolipids	3.00	Alchemy Ingredients
C	Fragrance 'Marine Minerals'	Parfum	0.25	Sozio
C	Fragrance 'Aloe Green Tea'	Parfum	0.35	Sozio
C	Blue 1	CI 42090	0.05	
C	Yellow 5	CI 19140	0.05	
C	PE9010	Phenoxyethanol, Ethylhexylglycerin	1.00	
D	50% Sol. Citric Acid	Aqua, Citric Acid	to pH 6.5-7	

Formulation Code: 107-21-27-00/1

## Method

- Combine phase A in a beaker and premix by hand. Heat the water then add phase B to phase A, homogenise at 3500-4000RPM until fully combined.
- Add phase C and stir in by hand until fully combined.
- Adjust the pH to between 6.5 and 7.

## Characteristics

### Stability

Stable for 3 weeks at 50°C and 3 months at 40°C

### Appearance

Green Fluid Cream

### PH

6.5 - 7

### Viscosity

Brookfield DV-E: RVHV-03 @ 10RPM & 20°C (±5 °C) = 9,000-12,000 cP (Fill size: 100g)

✓ PEG Free

✓ Natural Origin

✓ COSMOS Approved

✓ Vegan

## Ingredient Benefits

### Sophocoll®

- Nutrient based surfactant system
- Moisturises and repairs skin and hair
- Easy to use liquid, cold process ingredient
- 100% natural origin
- COSMOS Approved and Vegan

### Instathix®

- 4-in-1 multi-functional ingredient - stabiliser, thickener, texture enhancer or as the sole emulsifying system
- Creates luxurious cream / gel translucent textures
- Satin matt appearance, mimicking silicone elastomer feel – can replace synthetic emulsifiers / polymers
- Can be used as an additive to enhance silky feel of creams

## Adapt the Formula

- Change the actives for different benefits.
- Change out oils for different benefits.
- Change fragrances or colour.

The formulation above is intended for information purposes only based on the best of our knowledge. It is the responsibility of the customer to undertake the appropriate testing to determine the suitability of the product for their intended use.

# Calming Body Lotion

A lightweight moisturising lotion, the gentle touch of the lotion melts into your skin leaving a soothing fragrance.

ALCHEMY  
ingredients

## Ingredients

Phase	Trade Name	INCI name	% w/w	Supplier
A	Instathix®	Xanthan Gum, Sodium Stearoyl Lactylate, Tapioca Starch, Algin	4.0	Alchemy Ingredients
A	CCT	Caprylic/Capric Triglyceride	4.0	
A	IPM	Isopropyl Myristate	4.0	
A	Tocopherol	Tocopherol	0.5	
B	Water	Aqua	81.7	
B	Glycerine	Glycerine	3.0	
B	Panthenol	Panthenol	0.2	
C	Euxyl® PE9010	Phenoxyethanol, Ethylhexylglycerin	1.0	Schülke & Mayr
C	Rainforest Harvest AF	Glycerin, Aqua, Syzygium Leuhmanii Fruit Extract, Acronychia Acidula Fruit Extract, Davidsonia Pruriens Fruit Extract	0.5	Southern Cross Botanicals
C	FD & C Blue 1 0.1%	CI 42090	0.1	
C	Fragrance 'Marine Minerals'	Parfum	0.5	Sozio
C	Fragrance 'Dulce Seaweed'	Parfum	0.5	Sozio

Formulation Code: 101-21-00-00/1

## Method

- Heat water phase to 70°C
- Premix Instathix® in oil phase, then add water phase and stir till homogeneous
- Heat to 70°C and maintain temperature for 10 minutes
- Homogenise for 3 minutes at 3500- 5500 RPM
- Cool under mixing, add phase C when below 40°C

## Characteristics

### Stability

Stable for 3 weeks at 50°C and 3 months at 40°C

### Appearance

Pale blue gel lotion

### PH

6-7

### Viscosity

Brookfield DV-E: RVHV-04 @ 5RPM & 20°C (±5 °C) = 12,000-18,000 cP (Fill size: 100g)

✓ Vegan

✓ PEG Free

## Ingredient Benefits

### Instathix®

- COSMOS Approved
- 100% Natural Origin (ISO 16128)
- PEG Free, vegan suitable and gluten free
- Very safe and mild formulation
- Easy to use powder blend with low use level (0.5 – 4%)
- 4-in-1 multi-functional ingredient - stabiliser, thickener, texture enhancer or as the sole emulsifying system
- Creates luxurious cream / gel translucent textures
- Satin matt appearance, mimicking silicone elastomer feel –can replace synthetic emulsifiers / polymers
- Can be used as an additive to enhance silky feel of creams

## Adapt the Formula

- Change oils for a different skin feel: vegetable oils – richer feel, esters = lighter feel
- Add 2-5% butters in oil phase to give a richer texture
- Change fragrance, colour and actives

The formulation above is intended for information purposes only based on the best of our knowledge. It is the responsibility of the customer to undertake the appropriate testing to determine the suitability of the product for their intended use.

# Pina Colada Body Lotion

This body lotion deeply conditions and nourishes the skin and leaves a light tropical scent to transport you to a tropical island.

ALCHEMY  
ingredients

## Ingredients

Phase	Trade Name	INCI name	% w/w	Supplier
A	Instathix®	Xanthan Gum, Sodium Stearoyl Lactylate, Tapioca Starch, Algin	3.50	Alchemy Ingredients
B	Caprylic/Capric Triglyceride	Caprylic/Capric Triglyceride	4.00	
B	Joboba Oil	Simmondsia Chinensis (Jojoba) Seed Oil	2.00	
B	Shea Butter	Butyrospermum parkii (Shea) Butter	2.00	
C	Glycerine	Glycerin	5.00	
C	Water	Aqua	79.90	
D	Tropical Fruit Harvest™ AF	Glycerin, Aqua, Mangifera Indica Fruit Extract, Carica Papaya Fruit Extract, Ananas Sativus Fruit Extract	2.00	
D	Euxyl® PE9010	Phenoxyethanol, Ethylhexylglycerin	1.00	
D	Tropical Clean Fragrance	Parfum	0.50	
D	FD & C Yellow 5 (1% sol)	C.I. 19140	0.10	

Formulation Code: 098-21-00-00/1

## Method

- Heat oil phase until butters and waxes are fully melted then pre-mix in Instathix®.
- Heat water phase to 70°C, add to oil phase and stir till homogenous.
- Heat to 70°C and maintain temperature for 10 minutes.
- Homogenise for 3 minutes at 3500-5500RPM.
- Cool under mixing, add phase D when temperature is below 40°C.

## Characteristics

### Stability

Stable for 3 weeks at 50°C and 3 months at 40°C

### Appearance

Yellow Cream

### PH

6-7

### Viscosity

Brookfield DV-E: RVHV-04 @ 10RPM & 20°C (±5 °C) = 150,000 – 180,000 cP

✓ PEG Free

✓ Natural Origin

✓ COSMOS Approved

✓ Vegan

## Ingredient Benefits

### Instathix®

- COSMOS Approved
- 100% Natural Origin (ISO 16128)
- PEG Free, vegan suitable and gluten free
- Very safe and mild formulation
- Easy to use powder blend with low use level (0.5 – 4%)
- 4-in-1 multi-functional ingredient - stabiliser, thickener, texture enhancer or as the sole emulsifying system
- Creates luxurious cream / gel translucent textures
- Satin matt appearance, mimicking silicone elastomer feel – can replace synthetic emulsifiers / polymers
- Can be used as an additive to enhance silky feel of creams

## Adapt the Formula

- Change oils for a different skin feel: vegetable oils – richer feel, esters = lighter feel
- Remove butters to give a lighter texture
- Change fragrance, colour and actives

The formulation above is intended for information purposes only based on the best of our knowledge. It is the responsibility of the customer to undertake the appropriate testing to determine the suitability of the product for their intended use.

# Pumpkin Spice Body Lotion

A light yet nourishing body lotion designed to moisturise the skin during the winter months

ALCHEMY  
ingredients

## Ingredients

Phase	Trade Name	INCI name	% w/w	Supplier
A	Instathix®	Xanthan Gum, Sodium Stearoyl Lactylate, Tapioca Starch, Algin	3.50	Alchemy Ingredients
B	Glyceryl Stearate	Glyceryl Stearate	2.00	
B	Shea Butter	Butyrospermum parkii (Shea) Butter	2.00	
B	Cocoa Butter	Theobroma Cacao (Cocoa) Seed Butter	2.00	
B	Pumpkin Seed Oil	Curcubita Pepo (Pumpkin) Seed Oil	2.50	
B	Caprylic/Capric Triglyceride	Caprylic/Capric Triglyceride	5.00	
B	Jojoba Oil	Simmondsia Chinensis (Jojoba) Seed Oil	2.50	
C	Glycerine	Glycerin	5.00	
C	Water	Aqua	73.10	
D	Exo-H™	Water (and) Butylene Glycol (and) Alteromonas Ferment Extract	1.00	Lucas Meyer Cosmetics
D	Caramel colour 50% sol		0.05	
D	Gingerbread Fragrance	Parfum	0.35	
D	Euxyl® PE9010	Phenoxyethanol, Ethylhexylglycerin	1.00	

Formulation Code: 084-21-00-00/1

## Ingredient Benefits

### Instathix®

- COSMOS Approved
- 100% Natural Origin (ISO 16128)
- PEG Free, vegan suitable and gluten free
- Very safe and mild formulation
- Easy to use powder blend with low use level (0.5 – 4%)
- 4-in-1 multi-functional ingredient - stabiliser, thickener, texture enhancer or as the sole emulsifying system
- Creates luxurious cream / gel translucent textures
- Satin matt appearance, mimicking silicone elastomer feel – can replace synthetic emulsifiers / polymers
- Can be used as an additive to enhance silky feel of creams

## Method

- Heat oil phase till butters and waxes are fully melted then premix in Instathix®.
- Heat water phase to 70°C, add to oil phase and stir till homogeneous.
- Heat to 70°C and maintain temperature for 10 minutes.
- Homogenise for 3 minutes at 3500-5500 RPM.
- Cool under mixing, add phase D when temperature is below 40°C.

## Characteristics

### Stability

Stable for 3 weeks at 50°C and 3 months at 40°C

### Appearance

Beige Cream

### PH

6-7

### Viscosity

Brookfield DV-E: RVHV-04 @ 10RPM & 20°C (±5 °C), fill size: 100g = 10,000 – 20,000 cP

✓ COSMOS Approved

✓ Natural Origin

✓ Vegan

✓ PEG Free

✓ Sustainable

## Adapt the Formula

- Increase waxes/butters for a richer skin feel
- Reduce waxes/butter for lighter skin feel
- Change actives for different skin benefits
- Change colour and fragrance

The formulation above is intended for information purposes only based on the best of our knowledge. It is the responsibility of the customer to undertake the appropriate testing to determine the suitability of the product for their intended use.

# Hyaluronic Facial Serum

Apply by smoothing the light texture over the skin - it will absorb quickly leaving skin soft and moisturised.

ALCHEMY  
ingredients

## Ingredients

Phase	Trade Name	INCI name	% w/w	Supplier
A	Instathix	Xanthan Gum, Sodium Stearoyl Lactylate, Tapioca Starch, Algin	2.50	Alchemy Ingredients
A	Meadowfoam Seed Oil	Limnanthes Alba	1.00	
A	CCT	Caprylic/Capric Triglyceride	2.00	
A	Abyssinian Oil	Crambe Abyssinica Seed Oil	1.00	
A	Hydratagel G	Glycerine, Water, Sodium Hyaluronate	5.00	Alchemy Ingredients
A	Water	Aqua	85.80	
A	Panthenol	Panthenol	0.50	Tri-K
B	PE9010	Phenoxyethanol, Ethylhexylglycerin	1.00	
B	IBR Dormin Organic	Glycerine, Water, Narcissus Tazetta Bulb Extract	1.00	Infinity Ingredients
B	Fragrance 'Crystal Dew Clean'	Parfum	0.20	Sozio

Formulation Code: 082-21-14-00/1

## Ingredient Benefits

### Instathix®

- COSMOS Approved
- 100% Natural Origin (ISO 16128)
- PEG Free, vegan suitable and gluten free
- Very safe and mild formulation
- Easy to use powder blend with low use level (0.5 – 4%)
- 4-in-1 multi-functional ingredient - stabiliser, thickener, texture enhancer or as the sole emulsifying system
- Creates luxurious cream / gel translucent textures
- Satin matt appearance, mimicking silicone elastomer feel – can replace synthetic emulsifiers / polymers
- Can be used as an additive to enhance silky feel of creams

## Method

- Heat water to 70°C.
- Premix Instathix® in phase A then add heated water and stir till homogeneous.
- Heat to 70°C and maintain temperature for 10 minutes.
- Homogenise for 3 minutes at 3500-5500RPM.
- Cool under mixing, add phase B when below 40°C.

## Characteristics

### Stability

Stable for 3 weeks at 50°C and 3 months at 40°C

### Appearance

White Gel-Serum

### PH

6-7

### Viscosity

Brookfield DV-E: RVHV-03 @ 10RPM & 20°C (±5 °C) = 5,000 – 10,000 cP

✓ COSMOS Approved

✓ Vegan

✓ PEG Free

✓ Natural Origin

## Adapt the Formula

- Change the oil phase
- Change the actives for different skin benefits
- Change the fragrance

The formulation above is intended for information purposes only based on the best of our knowledge. It is the responsibility of the customer to undertake the appropriate testing to determine the suitability of the product for their intended use.

# SPF 15 Day Cream

A rich gel cream to hydrate, smooth and protect. It smooths wrinkles and blurs pores to give skin a long-lasting matt appearance.

ALCHEMY  
ingredients

## Ingredients

Phase	Trade Name	INCI name	% w/w	Supplier
A	Escalol 517	Butyl Methoxydibenzoylmethane	3.0	
A	Escalol 597	Octocrylene	7.5	
A	Neo Heliopan® OS	Ethylhexyl Salicylate	4.5	
A	CCT	Caprylic/Capric Triglyceride	5.0	
A	Abyssinian Oil	Crambe Abyssinica Seed Oil	1.0	
A	Melscreen® Buriti FG	Mauritia Flexuosa Fruit Oil	1.0	Chemyunion
A	Glyceryl Stearate	Glyceryl Stearate	2.5	
A	Mango Butter	Mangifera Indica Seed Butter	2.0	
B	Instathix®	Xanthan Gum, Sodium Stearoyl Lactylate, Tapioca Starch, Algin	3.5	Alchemy Ingredients
C	Hydratagel G	Glycerin, Water, Sodium Hyaluronate	5.0	Alchemy Ingredients
C	Water	Aqua	63.0	
D	Tropical Nectar Fragrance	Parfum	0.5	Sozio
D	PE9010	Phenoxyethanol, Ethylhexylglycerin	1.0	
D	Tropical Fruits Harvest™ AF	Glycerine, Water, Mangifera Indica (Mango) Fruit Extract, Carica Papaya (Papaya) Fruit Extract, Ananas Sativus (Pineapple) Fruit Extract	1.0	Lucas Meyer Cosmetics

Formulation Code: 080-21-14-00/1

## Method

- Heat phase A until completely melted.
- Premix Instathix® into phase A by hand.
- Heat water to 70°C, then add phase C to phase A/B and stir until homogeneous.
- Heat to 70°C and maintain temperature for 10 minutes.
- Homogenise for 3 minutes at 3500-5500 RPM.
- Cool under mixing, add phase D when temperature is below 40°C.

## Characteristics

### Stability

Stable for 3 weeks at 50°C and 3 months at 40°C

### Appearance

Pale peach cream.

### PH

5-7

### Viscosity

Spindle 05 @ 10 RPM: 20,000-40,000 cP (Model: Brookfield DV-E. Sample temperature: 20°C (±5 °C). Fill size:100g)

✓ Vegan

✓ PEG Free

## Ingredient Benefits

### Instathix®

- COSMOS Approved
- 100% Natural Origin (ISO 16128)
- PEG Free, vegan suitable and gluten free
- Very safe and mild formulation
- Easy to use powder blend with low use level (0.5 – 4%)
- 4-in-1 multi-functional ingredient - stabiliser, thickener, texture enhancer or as the sole emulsifying system
- Creates luxurious cream / gel translucent textures
- Satin matt appearance, mimicking silicone elastomer feel – can replace synthetic emulsifiers / polymers
- Can be used as an additive to enhance silky feel of creams

## Adapt the Formula

- Change the actives for different skin benefits.
- Change colour and fragrance.
- Change oil phase.

The formulation above is intended for information purposes only based on the best of our knowledge. It is the responsibility of the customer to undertake the appropriate testing to determine the suitability of the product for their intended use.



# Mattifying Day Cream

A rich gel cream to smooth and hydrate facial skin. Apply in upward strokes to the face and neck for a luxurious treatment.

ALCHEMY  
ingredients

## Ingredients

Phase	Trade Name	INCI name	% w/w	Supplier
A	Instathix®	Xanthan Gum, Sodium Stearoyl Lactylate, Tapioca Starch, Algin	3.50	Alchemy Ingredients
B	Glyceryl Stearate	Glyceryl Stearate	2.00	
B	Shea Butter	Butyrospermum parkii (Shea) Butter	3.00	
B	Cocoa Butter	Theobroma Cacao (Cocoa) Seed Butter	3.00	
B	Avocado Oil	Persea gratissima (Avocado) oil	2.00	
B	CCT	Caprylic/Capric Triglyceride	5.00	
B	Jojoba Oil	Simmondsia Chinensis Seed Oil	2.50	
C	Glycerine	Glycerine	5.00	
C	Water	Aqua	72.00	
C	Allantoin USP	Allantoin	0.20	Tri-K
D	Euxyl® PE9010	Phenoxyethanol, Ethylhexylglycerin	1.00	Schülke & Mayr
D	Fragrance 'Cocoa and Shea'	Parfum	0.80	Sozio

Formulation Code: 73-21-00-00/1

## Method

- Heat oil phase until butters and waxes are fully melted then premix in Instathix®.
- Heat water phase to 70°C, add to oil phase and stir till homogenous.
- Heat to 70°C and maintain temperature for 10 minutes.
- Homogenise for 3 minutes at 3500-5500RPM.
- Cool under mixing, add phase D when temperature is below 40°C.

## Characteristics

### Stability

Stable for 3 weeks at 50°C and 3 months at 40°C

### Appearance

White Gel Cream

### PH

6-7

### Viscosity

Brookfield DV-E: RVHV-04 @ 10 RPM & 20°C (±5 °C) = 15,000 – 20,000 cP

✓ Vegan

✓ Natural Origin

✓ PEG free

## Ingredient Benefits

### Instathix®

- COSMOS Approved
- 100% Natural Origin (ISO 16128)
- PEG Free, vegan suitable and gluten free
- Very safe and mild formulation
- Easy to use powder blend with low use level (0.5 – 4%)
- 4-in-1 multi-functional ingredient - stabiliser, thickener, texture enhancer or as the sole emulsifying system
- Creates luxurious cream / gel translucent textures
- Satin matt appearance, mimicking silicone elastomer feel – can replace synthetic emulsifiers / polymers
- Can be used as an additive to enhance silky feel of creams

## Adapt the Formula

- Change oils for a different skin feel: vegetable oils – richer feel, esters = lighter feel
- Remove butters to give a lighter texture
- Add extra starch or mattifying powder to enhance the matt effect.
- Change fragrance, colour and actives

The formulation above is intended for information purposes only based on the best of our knowledge. It is the responsibility of the customer to undertake the appropriate testing to determine the suitability of the product for their intended use.

# Vitamin C Serum

Delivers a burst of Vitamin C in one drop. Apply to selected dry or stressed areas of the skin as required.

ALCHEMY  
ingredients

## Ingredients

Phase	Trade Name	INCI name	% w/w	Supplier
A	Instathix®	Xanthan Gum, Sodium Stearoyl Lactylate, Tapioca Starch, Algin	2.00	Alchemy Ingredients
A	Mokaté® Kalahari Melon Seed Oil	Citrullus vulgaris seed oil	1.00	African Origin Oils
A	Olive Squalane	Squalane	1.00	
A	CCT	Caprylic/Capric Triglyceride	2.00	
A	Water	Aqua	89.50	
A	Glycerine	Glycerine	3.00	
B	Euxyl® PE9010	Phenoxyethanol, Ethylhexylglycerin	1.00	
B	Orange Secrets	Citrus Aurantium Dulcis (Orange) Fruit Extract	0.20	Gattefossé
B	Fragrance 'Orange Blossom and Ginger'	Parfum	0.20	Sozio
B	FD & C Yellow 5	CI19140	0.10	

Formulation Code: 71-21-00-00/1

## Method

- Heat water phase to 70°C.
- Premix Instathix® in oil phase, then add water phase and stir until homogenous.
- Heat to 70°C and maintain temperature for 10 minutes.
- Homogenise for 3 minutes at 3500-5500RPM.
- Cool under mixing, add phase B when below 40°C.

## Characteristics

### Stability

Stable for 3 weeks at 50°C and 3 months at 40°C

### Appearance

Pale Yellow Gel Serum

### PH

6-7

### Viscosity

Brookfield DV-E: RVHV-04 @ 10RPM & 20°C (±5 °C) = 3,000 – 8,000 cP

✓ Vegan

✓ Natural Origin

✓ PEG free

## Ingredient Benefits

### Instathix®

- COSMOS Approved
- 100% Natural Origin (ISO 16128)
- PEG Free, vegan suitable and gluten free
- Very safe and mild formulation
- Easy to use powder blend with low use level (0.5 – 4%)
- 4-in-1 multi-functional ingredient - stabiliser, thickener, texture enhancer or as the sole emulsifying system
- Creates luxurious cream / gel translucent textures
- Satin matt appearance, mimicking silicone elastomer feel – can replace synthetic emulsifiers / polymers
- Can be used as an additive to enhance silky feel of creams

## Adapt the Formula

- Change oils for a different skin feel: vegetable oils = richer feel, esters = lighter feel
- Add 10% alcohol for a refreshing cooling effect
- Change colour, fragrance and actives
- Suspend mica for a shimmer effect on skin

The formulation above is intended for information purposes only based on the best of our knowledge. It is the responsibility of the customer to undertake the appropriate testing to determine the suitability of the product for their intended use.

# Chewy Hair Putty

Create a textured effect with this hair putty, apply a pea sized amount to hair, scrunch in and style. Apply more as required for a perfectly dishevelled look.

ALCHEMY  
ingredients

## Ingredients

Phase	Trade Name	INCI name	% w/w	Supplier
A	Shea Butter	Butyrospermum parkii (Shea) Butter	3.00	
A	Cocoa Butter	Theobroma Cacao (Cocoa) Seed Butter	1.50	
A	Glyceryl Stearate	Glyceryl Stearate	2.50	
A	Cetyl Alcohol	Cetyl Alcohol	2.50	
A	Sweet Almond Oil	Prunus Amygdalus Dulcis (Almond) Oil	4.00	
A	Mokaté® Kalahari Melon Seed Oil	Citrullus Vulgaris Seed Oil	2.00	African Origin Oils
A	Hempseed Oil	Cannabis sativa Seed Oil	2.00	
B	White Clay	Kaolin	20.00	
B	Instathix®	Xanthan Gum, Sodium Stearoyl Lactylate, Tapioca Starch, Algin	3.50	Alchemy Ingredients
C	Glycerine	Glycerine	10.00	
C	Water	Aqua	45.6	
C	Panthenol	Panthenol	0.20	Tri-K
D	Fragrance 'Mint'	Parfum	0.20	
D	Hemp Tein Z	Hydrolyzed Cannabis Sativa Seed Extract	1.00	Tri-K
D	Keraplant NPNF	Water, Hydrolyzed Wheat Protein, Hydrolyzed Soy Protein, Hydrolyzed Corn Protein	1.00	Tri-K
D	Euxyl® PE9010	Phenoxyethanol, Ethylhexylglycerin	1.00	Schülke & Mayr

Formulation Code: 072-21-00-00/1

## Ingredient Benefits

### Instathix®

- COSMOS Approved
- 100% Natural Origin (ISO 16128)
- PEG Free, vegan suitable and gluten free
- Very safe and mild formulation
- Easy to use powder blend with low use level (0.5 – 4%)
- 4-in-1 multi-functional ingredient - stabiliser, thickener, texture enhancer or as the sole emulsifying system
- Creates luxurious cream / gel translucent textures
- Satin matt appearance, mimicking silicone elastomer feel – can replace synthetic emulsifiers / polymers
- Can be used as an additive to enhance silky feel of creams

## Method

- Heat oil phase until all waxes and butters have melted.
- Premix Instathix® and clay into oil phase by hand.
- Heat water phase to 70°C, add to oil phase and stir until homogeneous.
- Heat to 70°C and maintain temperature for 10 minutes.
- Homogenise for 3 minutes at 3500-5500 RPM.
- Cool under mixing, add phase D when temperature is below 40°C.

## Characteristics

### Stability

Stable for 3 weeks at 50°C and 3 months at 40°C

### Appearance

Off-white putty

### PH

6-7

### Viscosity

Brookfield DV-E: T-D (94) @ 10 RPM & 20°C (±5 °C) = 90,000-130,000 cP

✓ Vegan

✓ Natural Origin

✓ PEG free

✓ Palm-oil free

## Adapt the Formula

- Could be adapted as a face mask by changing actives
- Use a different colour clay
- Change oils and butters to suit the product

The formulation above is intended for information purposes only based on the best of our knowledge. It is the responsibility of the customer to undertake the appropriate testing to determine the suitability of the product for their intended use.

# Body Yoghurt

A light textured gel cream which hydrates and refreshes, suitable for all parts of the body.

ALCHEMY  
ingredients

## Ingredients

Phase	Trade Name	INCI name	% w/w	Supplier
A	Instathix®	Xanthan Gum, Sodium Stearoyl Lactylate, Tapioca Starch, Algin	4.00	Alchemy Ingredients
A	CCT	Caprylic/Capric Triglyceride	4.00	
A	IPM	Isopropyl Myristate	4.00	
A	Tocopherol	Tocopherol	0.50	
B	Water	Aqua	82.35	
B	Glycerine	Glycerine	3.00	
B	Panthenol	Panthenol	0.20	
C	Euxyl® PE9010	Phenoxyethanol, Ethylhexylglycerin	1.00	Schülke & Mayr
C	Hemp Tein Z	Hydrolyzed Hemp Seed Protein	0.50	Tri-K
C	D & C Red 33 Sol	CI 17200	0.10	
C	Fragrance 'Lush Day Dream Clean'	Parfum	0.35	Sozio

Formulation Code: 074-21-00-00/1

## Method

- Heat water phase to 70°C.
- Premix Instathix® in oil phase, then add water phase and stir till homogenous.
- Heat to 70°C and maintain temperature for 10 minutes.
- Homogenise for 3 minutes at 3500-5500RPM.
- Cool under mixing, add phase C when below 40°C.

## Characteristics

### Stability

Stable for 3 weeks at 50°C and 3 months at 40°C

### Appearance

Pale pink thin gel cream

### PH

6-7

### Viscosity

Brookfield DV-E (RVHV-04 @ 10RPM & 20°C (±5 °C)): 12,000 – 18,000 cP

✓ Vegan

✓ PEG free

## Ingredient Benefits

### Instathix®

- COSMOS Approved
- 100% Natural Origin (ISO 16128)
- PEG Free, vegan suitable and gluten free
- Very safe and mild formulation
- Easy to use powder blend with low use level (0.5 – 4%)
- 4-in-1 multi-functional ingredient - stabiliser, thickener, texture enhancer or as the sole emulsifying system
- Creates luxurious cream / gel translucent textures
- Satin matt appearance, mimicking silicone elastomer feel – can replace synthetic emulsifiers / polymers
- Can be used as an additive to enhance silky feel of creams

## Adapt the Formula

- Change oils for a different skin feel: vegetable oils – richer feel, esters = lighter feel
- Add 2-5% butters in oil phase to give a richer texture
- Change fragrance, colour and actives

The formulation above is intended for information purposes only based on the best of our knowledge. It is the responsibility of the customer to undertake the appropriate testing to determine the suitability of the product for their intended use.