

PacketLight LightWatch™ NMS/EMS

Network & Element Management Software for Telcos and Enterprise

PacketLight's LightWatch™ is a multi-platform Java-based network element management software. It provides full FCAPS functionality and is compliant with TMN standards. LightWatch™ uses the MySQL™ database

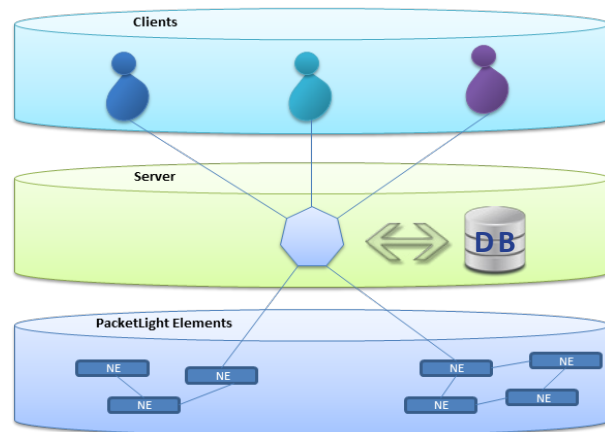
LightWatch™ is built with modular client-pay-as-you-grow offerings.

LightWatch™ is scalable to 500 network elements and 20 clients.

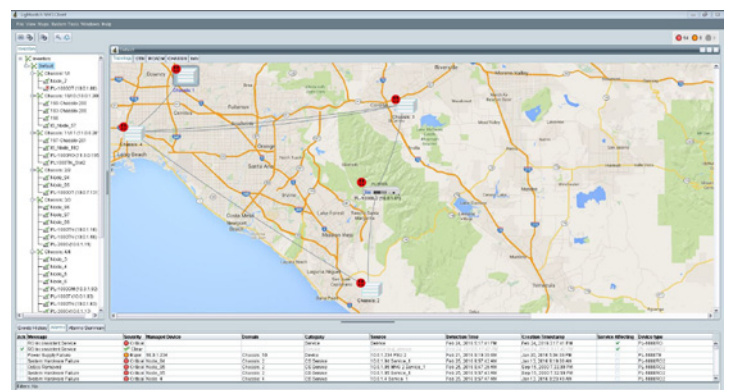
NMS Highlights

- Hierarchical topology view of the devices in the network
- Network Fault Management
- Display Network Inventory Management
- Service Management
- Event Forwarding of events to eMail server
- LightWatch Users Management
- Task scheduling for network operation such as SW Download and Configuration Files upload and download
- Collects, displays and stores Performance Management counters from all network elements
- Chassis Management

Client Server Architecture

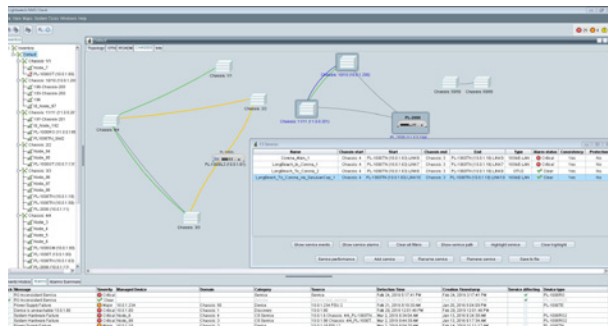


LightWatch Dashboard



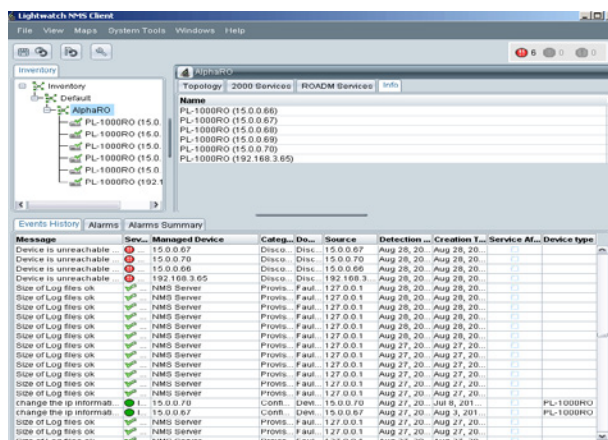
NMS Functionality

Topology



- Allows hierarchical network domains
- Automatic network topology discovery
- Allows manual drawing of the connections between nodes
- Chassis management

Fault Management

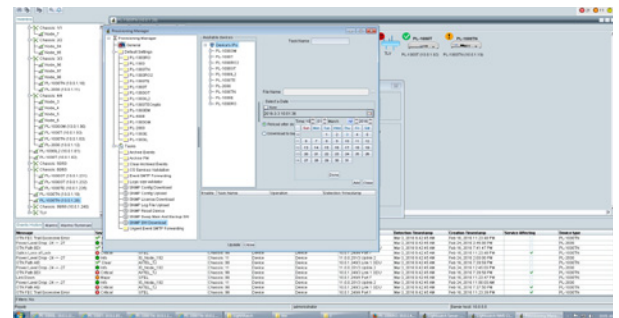


- Displays history of network Events
- Shows current Alarms
- Supports filtering of Events and Alarms
- Support archiving and browsing of old events
- Support Audible Alarm

User Management:

- Provides centralized management of user accounts
- Supports several Types of users with different access privileges:
 - Administrators
 - NetAdmins
 - Technicians
 - Users

Task Scheduling

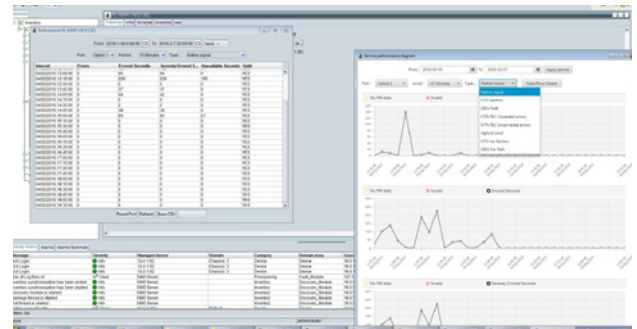


- **Scheduling Download of new SW version into group of network elements**
- **Scheduling Upload of Configuration Files from group of network elements**
- **Scheduling Download of Configuration Files into group of nodes**
- **Download of license files to group of nodes**
- **Upload of log files from group of devices**

Inventory

- Displays the Inventory of group of network elements
- Complies with standard ENTITY-MIB (RFC-4133)
- Allows filtering of the network elements according to chosen field values
- Support saving the inventory into CSV file

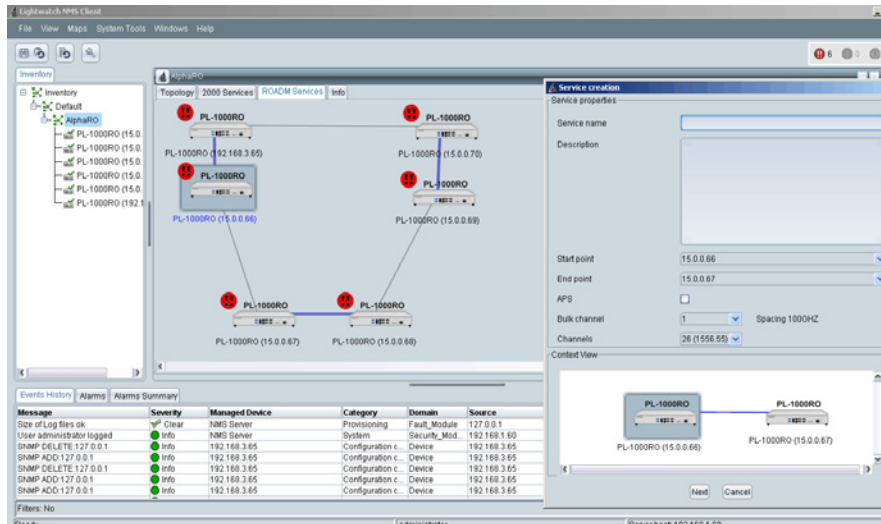
Performance Management



- Collects the PM from all devices in the network
- Displays the history of the 15 minutes and Day PM counters according to defined filter
- Supports configurable Graphical view of PM data
- Allows export of the PM information to file with CSV format

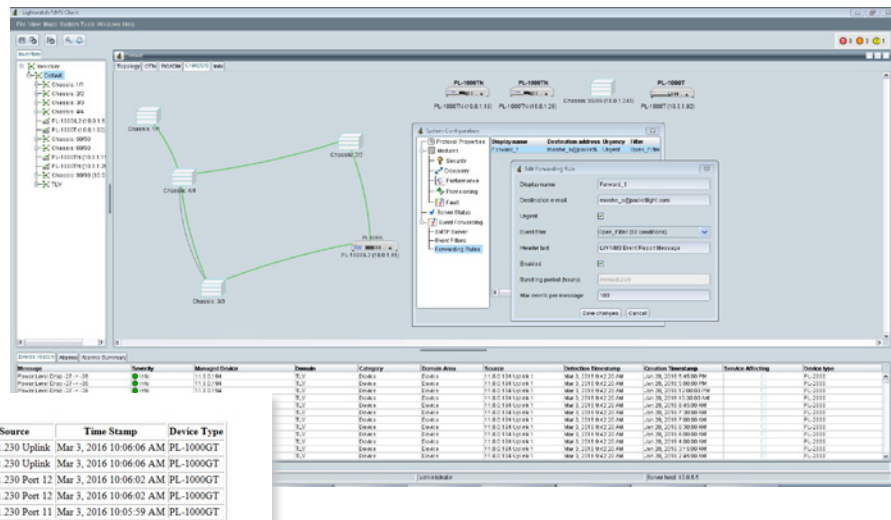
SMM- Service Mangement Module

- Automatic discovery of PL-1000RO and PL-2000 provisioned services
- Supports A to Z Service Provisioning wizard for PL-1000RO and PL-2000 services
- Displays and highlights the path of a selected service
- Supports display of service path, status and faults
- Supports full service awareness with the advanced chassis service management module (CSMM)
- Save and restore chassis configured services



Event Forwarding

- Allow sending eMail messages with selected events to selected users
- Multi criteria for event filtering
- Supports expedite event forwarding configuration



Specifications

Hardware Requirements

Server:

- CPU Intel™ Core I7 3.0 GHz or higher
- Minimum 8 GB RAM
- Minimum 20GB free disk space

Client:

- CPU Intel™ Core I5 2.5 GHz or higher
- Minimum 4 GB RAM
- Free 1.5 GB disk space for installation
- Color monitor supporting 1024x768 resolution or higher

Supported Products

- PL-1000, PL-1000E, PL-400
- PL-1000TE, PL-1000TE Crypto
- PL-2000, PL-1000EM
- PL-1000TN
- PL-1000GM, PL-1000GT, PL-1000T
- PL-1000IL
- PL-1000RO

Software Requirements

- Windows 7/8/10
- Windows 2003/2008
- Optional: An access to SMTP eMail Server for Event Forwarding by LightWatch Server

Scalability

- Network Elements: Up to 500
- Clients: up to 20

Management Protocols

- SNMPv2c: Between Server and NE
- TFTP: for file transfer between Server and NE
- HTTP/HTTPS: Web browser to NE
- Telnet/SSH: CLI to NE
- Syslog: for Syslog messages sent from the NE to the Server



27 Habarzel St. | Ramat Hahayal | Tel Aviv 69710 | Israel
+972 3 768 7888 ph | +972 3 647 5500 fax | Info@packetlight.com | www.packetlight.com