



# DRONÉ

2024

DUAL-CORE  
SPOKED DESIGN

HOLLOWCORE  
TECHNOLOGY



# KAI SAUNDERS 'SAUNDEZY' SIGNATURE NEXUS 1 DECK

BRISBANE KING

RIDING  
CATEGORY

**STREET KILLER**

LEVEL

**BEGINNER TO PROFESSIONAL**

Drone proudly introduces the Kai Saunders 'Saundezy' Signature Nexus 1 Deck, specially crafted for Kai Saunders, offering unique technological tweaks; bringing an evolution to the Nexus 1.

The deck features a newly refined blunt plate with a subtle crook groove, thickened blunt plate, and curved edges to help you smoothly execute blunt grinds.

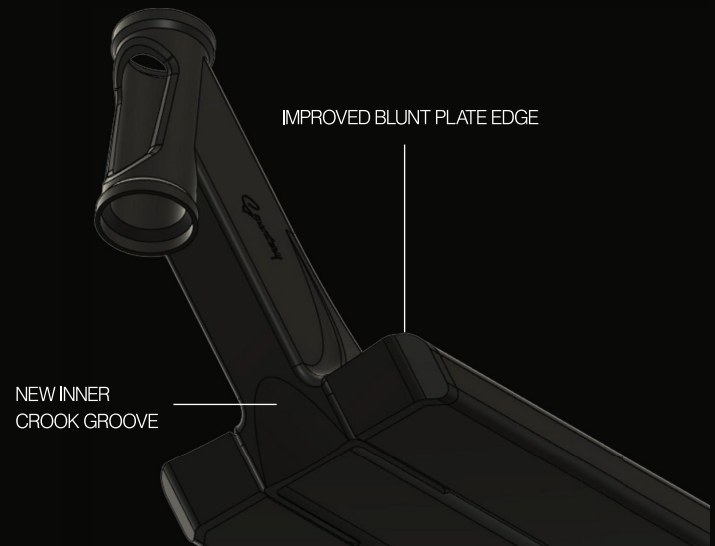
The backend is now 8mm & 12 STD compatible, featuring inner grindable spacers that provide a larger horizontal grinding space for 50 - 50s. These one-piece spacers make it easier to install wheels of any size, making the deck is compatible with 110mm, 120mm, 125mm, 24mm, and 30mm wheels. The I-Beam has been slimmed down to ensure grind forces are sent through the backend plugs and grindable inner spacers rather than the extrusion. The left and right backend plugs have been slimmed down and strengthened using 7075 series aluminum, making them virtually indestructible, as 7075 is three times as strong as 6061 aluminum.

The deck is polished off with a new lightweight steel fender built to Kai's specifications. This fender can be positioned exactly to your preferred fender placement. The deck boasts a range of other features, including a lightweight extrusion with weight-reducing perforated footplate that can be gripped over, eliminating the need for a base cutout.

Available in a variety of sizes, the Kai Saunders 'Saundezy' deck comes in 6" x 21", 6" x 22", 6.5" x 22", and 6.5" x 23".

EXTRUSION  
IMPROVEMENTS

**FRONT END**



## FEATURES

4 Sizes: 6" x 21" / 6" x 22" / 6.5" x 22" / 6.5" x 23"

Weight: 1.67kg (3.7lb) / 1.78kg (3.9lb) / 1.81kg (4lb) / 1.92kg (4.2lb)

84 degrees headtube angle with new improved blunt plate and crook groove

Perforated top deck plate

Signature Kai Graphic

8mm and 12 STD Compatible with axles and required spacers

24mm, 30mm, 110mm, 120mm & 125mm Wheel Compatibility

Refined 7075 Aluminium deck ends

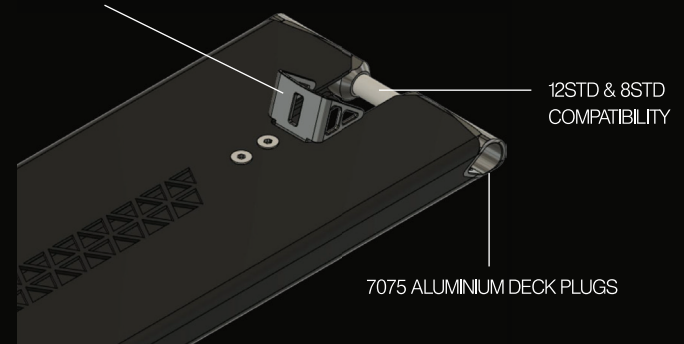
New adjustable 125mm feather-light fender

Colours: Black

EXTRUSION  
IMPROVEMENTS

**BACK END**

125MM STEEL FENDER





Saundezzy



# KAI SAUNDERS 'SAUNDEZY' SIGNATURE ELEMENT 2 COMPLETE SCOOTER

*Saunders*  
AUSSY SHREDDER

RIDING  
CATEGORY

**STREET KILLER**

LEVEL

**BEGINNER TO PROFESSIONAL**

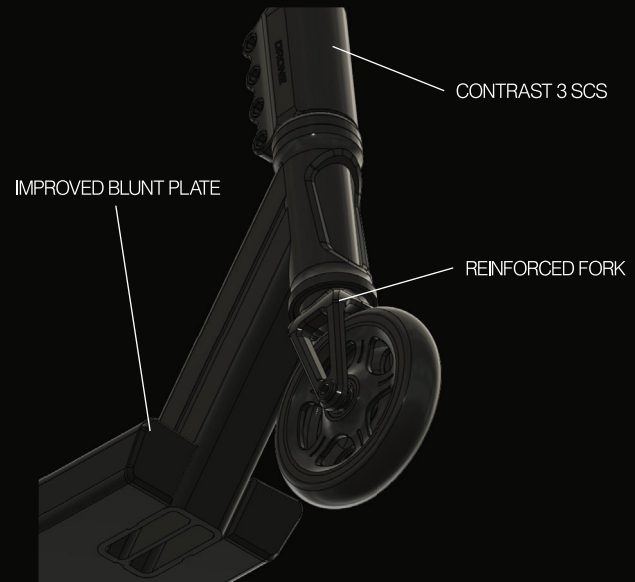
The Kai Saunders 'Saundezy' Complete Scooter is a cutting-edge and versatile option for riders looking to elevate their scooter game. Let's delve into some key features of this exciting new release:

- 1- Kai Saunders Element 2 Signature Deck:** The Signature Element 2 deck is specifically designed with the beginner street rider in mind, featuring a refined blunt plate and nylon backend for improved grinding. This design aims to enhance the learning experience for street tricks, ensuring smooth execution.
- 2- Contrast 3 SCS Clamp:** The Contrast 3 SCS Clamp provides a secure and reliable grip, ensuring stability during intense rides and tricks.
- 3- Relic 3 Bars:** The super-strong steel Relic 3 Bars offer excellent control; with a focus on durability, these bars are designed to withstand the rigors of intense riding sessions.
- 4- Luxe 110mm Feather-Light Dual Core Wheels:** The Luxe 110mm Feather-Light Dual Core Wheels are engineered for maximum performance and speed. Dual-core technology ensures a lightweight design without compromising on strength and durability.
- 5- Brake Options:** The steel feather-light brake on the deck ensures reliable stopping power. For those who prefer alternatives, a spare fender is included in the box, offering customization and adaptability.
- 6- Size Options:** The complete scooter is in 1 x size which is 5" x 19.2"

Overall, the Kai Saunders 'Saundezy' Element 2 Complete Scooter is a comprehensive package that combines signature design elements with professional components to deliver a high-performance. Whether you're a seasoned rider or a newcomer to the scooter scene, this complete scooter aims to cater to a broad range of preferences and skill levels.

EXTRUSION  
IMPROVEMENTS

**FRONT END**



## FEATURES

Element 2 Deck : 5" x 19.2"

Total height: 850mm

Weight: 31kg

82.5 degrees headtube angle with new improved blunt plate

Perforated top deck plate

Signature Kai Graphic

Drone Contrast 3 SCS Clamp

Relic 3 Chromoly SCS Standard size bars

Alcolyte 180mm Grips

Luxe 3 110mm Dual Core Wheels.

Shadow 3 Feather-Light SCS Fork

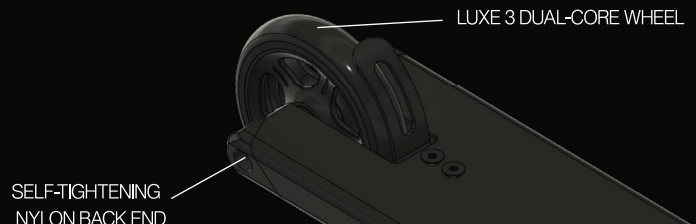
Self tightening Nylon Deck ends

New adjustable 125mm feather-light brake and additional fender

Colours: Black, Silver, Blue Chrome, Rose Gold

EXTRUSION  
IMPROVEMENTS

**BACK END**





Candor

Candor

70000

Candor

Candor

70000

I HAVE  
THE BEST  
FRIEND

MSD

Candor

Candor

# JAKE B SMITH SIGNATURE DECK

SHREWSBURY SHREDDER

RIDING  
CATEGORY

**STREET**

LEVEL

**BEGINNER TO PROFESSIONAL**

## Introducing the Jake B Smith Signature Deck

Jake, a seasoned street rider in the UK for numerous years, has rightfully earned his signature deck. Renowned for his technical and innovative street riding, he stands out in the scene. By choosing this deck, you're not just getting an amazing quality Nexus deck; you're also showing support for Jake's amazing riding.

Each deck features a Signature Jake B Smith Kendama!

The deck has his signature graphic featuring elements from his home town of Shrewsbury, the graphic comes on a flat base base with a slight indent to ease board slides.

We have designed every element of this deck to make it one of the lightest but strongest 6" and 6.5" wide decks on the market.

The 84 degree headtube and neck has been extruded and then CNC'd and has been designed with a wider base to account for the bigger stresses created by a larger deck plate and heavier street riding. The headtube has been simplified to make sure the welding area between the neck and headtube is flat and optimised for strength and also features weight reducing fluting and cut-outs externally and internally.

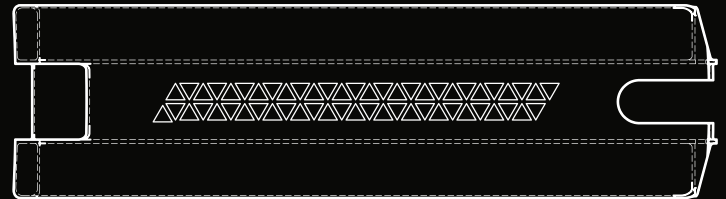
The Extrusion will now be 6" and 6.5" with a perforated foot plate to reduce weight while also being easy to griptape over so that the rider is not limited by a large cut out through the top.

The deck will come with a steel feather-light brake as we found plastic brakes too weak in testing and a single hex key tightening replaceable aluminium back ends that are deeper set into the extrusion.

EXTRUSION  
PROFILE

**STREET STRAIGHT**

STRONG, TRADITIONAL & RIGID



## FEATURES

2 Sizes: 6" x 22" / 6.5" x 22"

Weight: 1.78kg (3.9lb) / 1.81kg (4lb)

84 degrees headtube angle with extra blunt room

Perforated top deck plate

24mm, 30mm, 110mm & 120mm Wheel Compatibility

Aluminium deck ends

Steel Feather-Light brake

Colours: Matte Grey

## PERFORMANCE STATISTICS

LIGHTWEIGHT

7

STRENGTH

10

HANDLING/  
RESPONSIVITY

7

GRINDS

9



Abe Smith



# ANSGAR KROGER SIGNATURE DECK

# ANSGAR KRÖGER

GERMAN GAME-CHANGER

RIDING  
CATEGORY

**STREET**

LEVEL

**BEGINNER TO PROFESSIONAL**

## Introducing the Ansgar Kroger Signature Deck

Ansgar, a gnarly street rider from Germany, has rightfully earned his signature deck.

Renowned for his huge gap and drops, he stands out as one of the gnarliest riders in the scene. By choosing this deck, you're not just getting an amazing quality Nexus deck; you're also showing support for Ansgar's amazing riding.

Each deck features a Signature Ansgar Kendama!

The deck has his signature graphic featuring elements from his tattoo's and favourite inspirational images, the graphic comes on a flat base base with a slight indent to ease board slides.

We have designed every element of this deck to make it one of the lightest but strongest 6" and 6.5" wide decks on the market. The 84 degree headtube and neck has been extruded and then CNC'd and has been designed with a wider base to account for the bigger stresses created by a larger deck plate and heavier street riding. The headtube has been simplified to make sure the welding area between the neck and headtube is flat and optimised for strength and also features weight reducing fluting and cut-outs externally and internally.

The Extrusion will now be 6" and 6.5" with a perforated foot plate to reduce weight while also being easy to griptape over so that the rider is not limited by a large cut out through the top.

The deck will come with a steel feather-light brake as we found plastic brakes too weak in testing and a single hex key tightening replaceable aluminium back ends that are deeper set into the extrusion.

EXTRUSION  
PROFILE

**STREET STRAIGHT**

STRONG, TRADITIONAL & RIGID



## FEATURES

2 Sizes: 6" x 22" / 6.5" x 23"

Weight: 1.78kg (3.9lb) / 1.81kg (4lb)

84 degrees headtube angle with extra blunt room

Perforated top deck plate

24mm, 30mm, 110mm & 120mm Wheel Compatibility

Aluminium deck ends

Steel Feather-Light brake

Colours: Moss Green

## PERFORMANCE STATISTICS

LIGHTWEIGHT

7

STRENGTH

10

HANDLING/  
RESPONSIVITY

7

GRINDS

9



# ANSGAR KRÖGER



# SHADOW 3 FEATHER-LIGHT COMPLETE SCOOTER

KING OF THE PARK

RIDING CATEGORY	<b>PARK MACHINE</b>
-----------------	---------------------

LEVEL	<b>BEGINNER TO PRO</b>
-------	------------------------

## OVERVIEW

A New Era in Drone design is here! The Drone Shadow 3 Feather-Light Complete is one of the lightest full sized completes on the market and builds on the ever-popular Shadow range to offer you one of the most advanced completes money can buy.

The deck itself weighs in at just 1.2kg, bringing the complete down to 3.15 kilograms. Sporting the all-new Helios Hollow-Spoked Wheels, which have an optimised core to PU ratio which reduces weight, increases rigidity and maximises speed. The wheels rotate around our all-new Ultra-Sonix bearings.

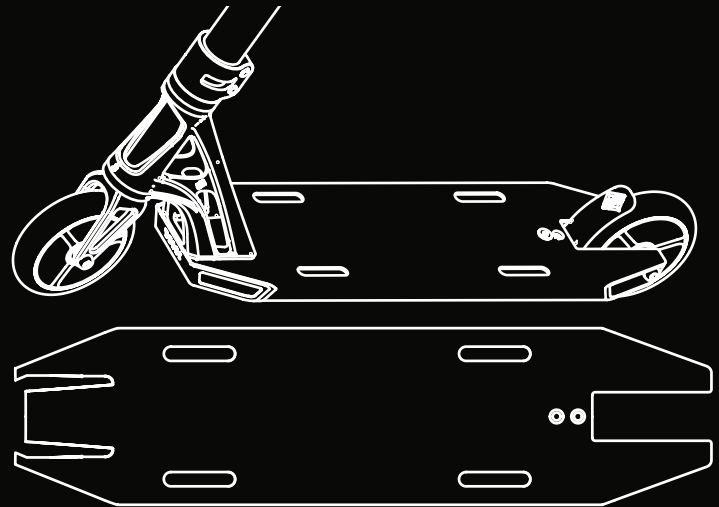
The IHC fork has been totally redesigned, cutting as much excess weight off them as possible to create a minimalist, lightweight design that improves the level of control.

Aesthetically the deck now has top and bottom cut-outs that have been positioned to reduce weight even further.

The Solar clamp is totally new and weighs only 60grams and the bars also feature the longer and new 180mm Acolyte grips.

EXTRUSION PROFILE	<b>PARK TAPERED</b>
-------------------	---------------------

LIGHTWEIGHT, REACTIVE & RESPONSIVE



## FEATURES

Weight – 3.15kg (6.9lb)
Shadow 3 Feather-Light Deck – 4.9" (124.4mm) x 19.2" (488mm) long with weight reducing cut outs
Helios Hollow Spoked 110mm 88a Wheels
Feather-Light 6061 aluminium IHC fork
82.5 degree headtube angle
Ultra-Sonix Abec 9 Bearings
Shadow ALU bars 630mm high x 580mm wide (570mm without bars ends)
Acolyte grips 180mm long silicone grips and bars end
Chromoly 120mm Feather-Light brake
Synergy 2 Headset
Solar 6061-T6 Aluminium Double clamp
Colours: Black / Silver Anodised / Smoked Chrome

## PERFORMANCE STATISTICS





# SHADOW 3 FEATHER-LIGHT DECK

## NEXT GENERATION PERFORMANCE

RIDING CATEGORY	<b>PARK MACHINE</b>
--------------------	---------------------

LEVEL	<b>BEGINNER TO PRO</b>
-------	------------------------

### OVERVIEW

The legend is back! The Shadow 3 Feather-Light Deck is one of our lightest and most professional deck to date. Featuring a totally redesigned forged neck that is 20% lighter. Special attention has been made to the welding area, which has been designed to slot into the extrusion in a more efficient way, while simultaneously reducing its weight. Stress analysis has been carried out to make sure that the strength in the weld has not been compromised. The extrusion has also been re-engineered with top and base cutouts to create a much more responsive deck. Weight has also been removed with the introduction of a lighter blunt plate.

Another change to the Shadow 3 is the size options; the 4.9" wide deck is now available in 18", 19.2" and 20.5" length, giving the younger park generation the opportunity to hone their skills.

EXTRUSION PROFILE	<b>PARK TAPERED</b>
----------------------	---------------------

LIGHTWEIGHT, REACTIVE & RESPONSIVE

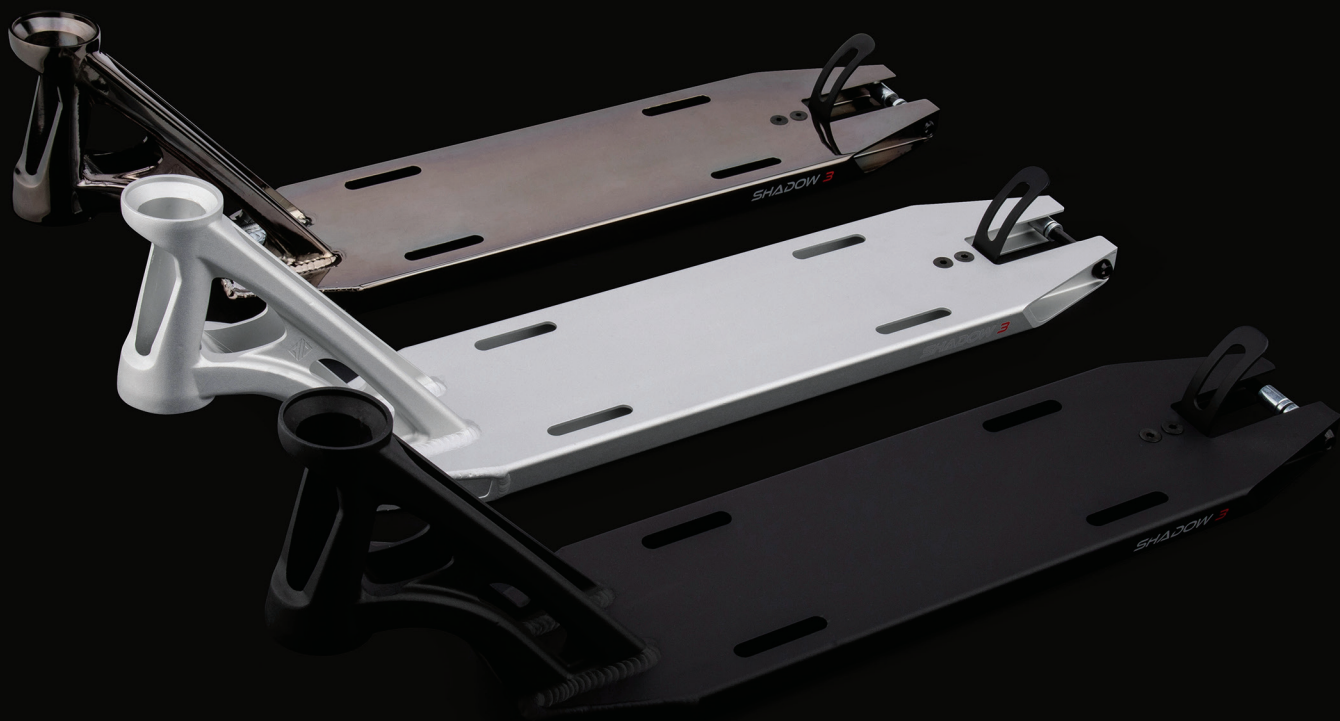


### FEATURES

Width: 4.9" (124.4mm)
3 Lengths: 18.0" (457mm) / 19.2" (488mm) / 20.5" (521mm)
Weight: 1.18kg (2.6lb) / 1.25kg (2.75lb) / 1.3kg (2.9lb)
Shadow 3 Headtube made of forged 6061 T6 aluminium
Tapered 6061 T6 aluminium extrusion
Top and bottom cut-outs
Headtube angle: 82.5 degrees
Fits up to 120mm wheels
Colours: Black / Silver Anodised / Smoked Chrome

### PERFORMANCE STATISTICS





# ELEMENT 2 FEATHER-LIGHT COMPLETE SCOOTER

LIGHT AS A FEATHER

RIDING  
CATEGORY

**PARK MACHINE**

LEVEL

**BEGINNER TO INTERMEDIATE**

## OVERVIEW

The Element 2 Feather-Light Complete advances our Element Series into a new era of park performance products. The Element 2 Feather-Light scooter comes with a range of high-end improvements compared to the original Element that makes it unbeatable in terms of weight and performance. With this complete we wanted to refine everything by reducing weight in every component.

Starting with the wheels we have added the all-new Luxe 3 Dual-Core Wheels in 110mm which feature enlarged 86mm core design and low-profile PU. These wheels are very high tech and are some of the lightest on the market.

The old forks have been replaced by a new Feather-Light IHC aluminium fork. A refined and cleaner design; all unnecessary material has been removed to make this one of the lightest IHC fork on the market. Compressing the system together is a new Solar Feather-Light aluminium double clamp that only weighs 60grams.

The Element 2 Feather-Light deck has top and bottom cut-outs and front and back tapers to strip away any weight making it more tailored to park riding. In cross-section, the deck features a subtle concave for heightened control and responsivity and comes in a compact size of 4.5" x 19.0" that only weighs 1.2kg

The wider Shadow aluminium bars are combined with our new soft compound 180mm long Acolyte grips for ultimate comfort and control across the whole bar.

All the changes have allowed us to get the weight of this complete to a staggering 2.95kg!

This is one of the best lightweight park completes you can buy.

EXTRUSION  
PROFILE

**PARK STRAIGHT**

LIGHTWEIGHT, DEPENDABLE AND RESPONSIVE



## FEATURES

Total Weight – 2.95kg (6.5lb)
Element Feather-Light 4.5" (114mm) Wide x 19" (483mm) long 6061 T6 Aluminium Deck
Luxe 3 Dual Core 110mm 88a wheels
Top and bottom cut-outs
New Feather-Light 6061 aluminium IHC fork
82.5 degrees headtube angle
Drone Ultra-Sonix Abec 9 bearings
Aluminium 610mm high x 570mm wide bars (560mm without bar ends)
New Acolyte Grips 180mm long silicone grips

Drone Steel Feather-Light brake

Drone Synergy 2 headset

Solar 6061-T6 Aluminium Double clamp

Colours: Black / Silver Anodised / Smoked Chrome / Neochrome

## PERFORMANCE STATISTICS

LIGHTWEIGHT  
**10**

STRENGTH  
**8**

HANDLING/  
RESPONSIVITY  
**9**

GRINDS  
**6**



# ELEMENT 2 FEATHER-LIGHT DECK

ZERO GRAVITY

RIDING CATEGORY	<b>PARK MACHINE</b>
--------------------	---------------------

LEVEL	<b>BEGINNER TO INTERMEDIATE</b>
-------	---------------------------------

## OVERVIEW

The Element 2 Feather-Light deck is our lightest deck yet; compact, clean, and responsive.

The deck is now 4.5" wide and comes in a smaller 18" size, plus the more classic 19" & 21" lengths, built for beginner level park riding.

The neck and extrusion are now much lighter, featuring fluting and cut-outs. The front and back tapers are more aggressive and the blunt plate has been made thinner.

This is a park classic redefined weighing in at less than 1.15kg.

EXTRUSION PROFILE	<b>PARK STRAIGHT</b>
----------------------	----------------------

LIGHTWEIGHT, DEPENDABLE AND RESPONSIVE



## FEATURES

Width 4.5" (114mm)
3 Lengths: 18.0" (457mm) / 19.0" (483mm) / 21" (533mm)
Weight: 1.15kg (2.54lb) / 1.2kg (2.64lb) / 1.25kg (2.75lb)
Top and bottom cut-outs
Headtube angle: 82.5 degrees
Material: 6061 T6 aluminium
Steel Feather-Light brake
Colours: Black / Silver Anodised / Smoked Chrome

## PERFORMANCE STATISTICS







# NEXUS I DECK

BUILT TO GRIND

RIDING  
CATEGORY

**STREET KILLER**

LEVEL

**INTERMEDIATE TO PRO**

## OVERVIEW

The NEXUS 1 Deck is our new flagship street deck.

We have designed every element of this deck to make it one of the lightest but strongest 6" and 6.5" wide decks on the market.

The 84 degree headtube and neck has been extruded and then CNC'd and has been designed with a wider base to account for the bigger stresses created by a larger deck plate and heavier street riding. The headtube has been simplified to make sure the welding area in-between the neck and headtube is flat and optimized for strength, and also features weight reducing fluting and cut-outs externally and internally.

The Extrusion will now be 6" and 6.5" with a perforated foot plate to reduce weight while also being easy to griptape over so that the rider is not limited by a large cut out through the top.

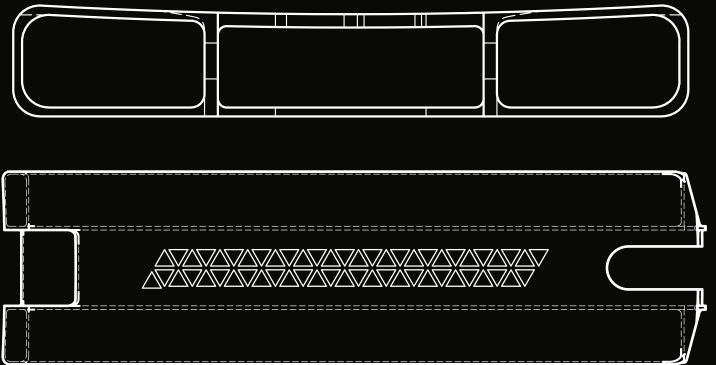
The deck will come with a steel feather-light brake as we found plastic brakes too weak in testing and a single hex key tightening replaceable aluminium back ends that are deeper set into the extrusion.

The base also has a cut out and the blunt plate is integrated into the neck of the deck.

EXTRUSION  
PROFILE

**STREET STRAIGHT**

STRONG, TRADITIONAL & RIGID



## FEATURES

4 Sizes: 6" x 21" / 6" x 22" / 6.5" x 22" / 6.5" x 23"

Weight: 1.67kg (3.7lb) / 1.78kg (3.9lb) / 1.81kg (4lb) / 1.92kg (4.2lb)

84 degrees headtube angle with extra blunt room

Perforated top deck plate

Base cutout

24mm, 30mm, 110mm & 120mm Wheel Compatibility

Aluminium deck ends

Steel Feather-Light brake

Colours: Black / Silver anodized / Purple

## PERFORMANCE STATISTICS

LIGHTWEIGHT

7

STRENGTH

10

HANDLING/  
RESPONSIVITY

7

GRINDS

9



# LUXE 3 DUAL-CORE FEATHER-LIGHT WHEEL

DOUBLE TROUBLE

RIDING  
CATEGORY

**ALL ROUND**

LEVEL

**BEGINNER TO PROFESSIONAL**

## OVERVIEW

The Luxe 3 Dual Core wheels are a technologically advanced update of the popular Luxe range. These wheels are now far lighter due to a totally reimaged Dual-Core Feather-light design. Rather than solid spokes, they utilise a spoked dual-core design, retaining all the strength but reducing weight considerably to 225 grams.

The wheel itself boasts an oversized 86mm core meaning that the wheels themselves are more rigid and the core size to PU ratio is optimised for weight reduction.

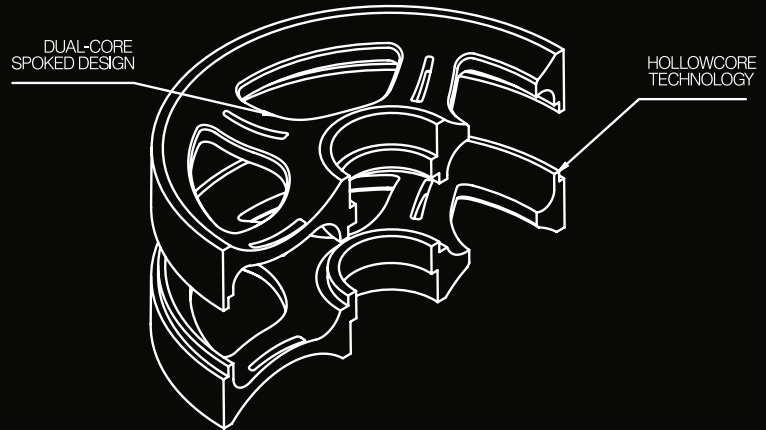
The wheels come pre-fitted with the best bearings we could source – the Drone Ultra-Sonix bearings which offer unmatched speed, performance and durability.

The Luxe 3 wheel is a true performance product from Drone and is guaranteed to help you progress within scooting.

FORGE  
PROFILE

**DUAL-CORE TECHNOLOGY**

2-PIECE SPOKED DUAL-CORE



## FEATURES

Dual-core technology hollow design

110mm

88a PU hardness

Large 86mm core for increased rigidity

Weight: 225g (0.5lb) per wheel (with bearings)

Ultra-Sonix bearings for maximum speed

Colours: Black / Silver / Smoked Chrome / Neochrome / Blue

## PERFORMANCE STATISTICS

LIGHTWEIGHT

**10**

STRENGTH

**8**

SPEED

**9**

GRIP

**8**



# HELIOS 1 HOLLOW-SPOKED FEATHER-LIGHT WHEELS

## SPACE-AGE TECHNOLOGY

RIDING  
CATEGORY

**ALL ROUND**

LEVEL

**BEGINNER TO PROFESSIONAL**

### OVERVIEW

The HELIOS 1 Hollow-Spoked Wheel builds on the success of the hollowcore design by adding the structural benefits of spokes.

This wheel is comprised of two pieces of hollow forged high grade 6061-T6 aluminium; CNC'd, pressed together & finished with a low profile 88A compound PU.

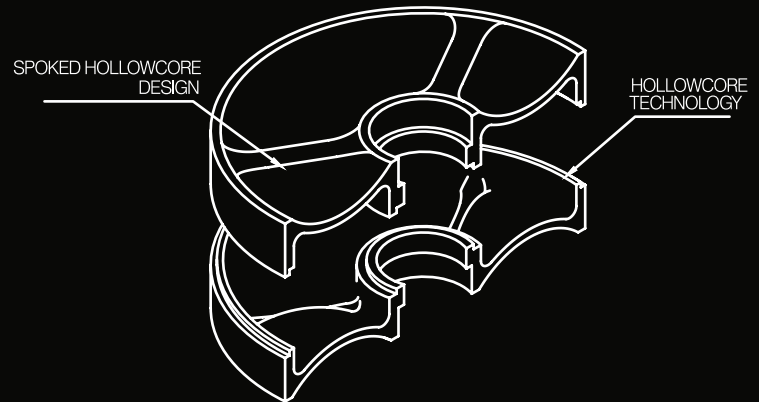
The wheel itself boasts an oversized 86mm core meaning that the wheels are more rigid, improving the feel & responsivity. The new core size to PU ratio, and wall thickness means these wheels weigh only 225g.

Coming pre-fitted with Drone Ultra-Sonix bearings, these wheels have unmatched speed and performance.

FORGE  
PROFILE

**SPOKED HOLLOW-CORE TECHNOLOGY**

2 PIECE HOLLOW-CORE WITH SPOKES



### FEATURES

Innovative Hollow-Spoked Core

110mm size

88a PU hardness

Large 86mm core for increased rigidity

Weight: 225g (0.5lb) per wheel (with bearings)

Ultra-sonix bearings for maximum speed

Colours: Black / Silver / Smoked Chrome / Neochrome / Blue / Red

### PERFORMANCE STATISTICS

LIGHTWEIGHT

**10**

STRENGTH

**9**

SPEED

**9**

GRIP

**8**



# HOLLOW-SERIES 110MM WHEEL

MR CLASSIC

RIDING  
CATEGORY

**PARK**

LEVEL

**BEGINNER TO PROFESSIONAL**

## OVERVIEW

The Hollow-Series wheels are now a Drone Classic! Featuring a classic Hollowcore technology design, these wheels are the lightest we make, and the strongest due to it's uniform and solid design.

Weighing only 210 per wheel these wheels will really help you land those park tricks!

## FEATURES

110mm Diameter

88A Wheel Hardness PU

Abec 9 Bearings

Hollow Core technology for Lightweight Use

Weight: 210 grams

6 Colours ( Black, Silver, Smoked Chrome, Red, Blue and Neochrome)

Forge Profile: Hollowcore Technology

Lighter than a feather



## PERFORMANCE STATISTICS

LIGHTWEIGHT

**10**

THRASH  
PROOF

**8**

STRENGTH

**9**





DRONE  
6061 T6 CORE

DRONE  
6061 T6 CORE

DRONE  
6061 T6 CORE

HOLLOW SERIES

10MM X 4MM

# AEON III FEATHER-LIGHT FORK

WILL LAST AN EPOCH

RIDING  
CATEGORY

**PARK**

LEVEL

**BEGINNER TO PROFESSIONAL**

## OVERVIEW

Meet the lighter-weight evolution of the Aeon Fork Range! The Aeon 3 Fork has totally redesigned geometry. The New shape of the fork legs and fork tube now means that it is 10% lighter, at 199 gram (SCS version) and 240 gram (IHC version). The SCS & IHC version is one of lightest forks on the market and is the perfect balance between being lightweight and being durable. We have also managed to maintain it's incredible strength due to the use of 7075-T6 Aluminium. This fork is built for riders preferring a light-weight set up.

Couple the IHC version with a lightweight double clamp and it will be much lighter than any SCS fork and clamp combination.

PROFILE

**LIGHT PARK**

LIGHT & REACTIVE

## FEATURES

Weight: SCS- 199g (7lb) / IHC - 240g (8.4lb) – 10% lighter

SCS & IHC versions

24mm Width Wheel Compatible

110mm & 120mm Wheel Compatible

Made from 7075-T6 Series aluminium

Colours: Black / Polished / Smoked Chrome / Neochrome / Red

## PERFORMANCE STATISTICS

LIGHTWEIGHT

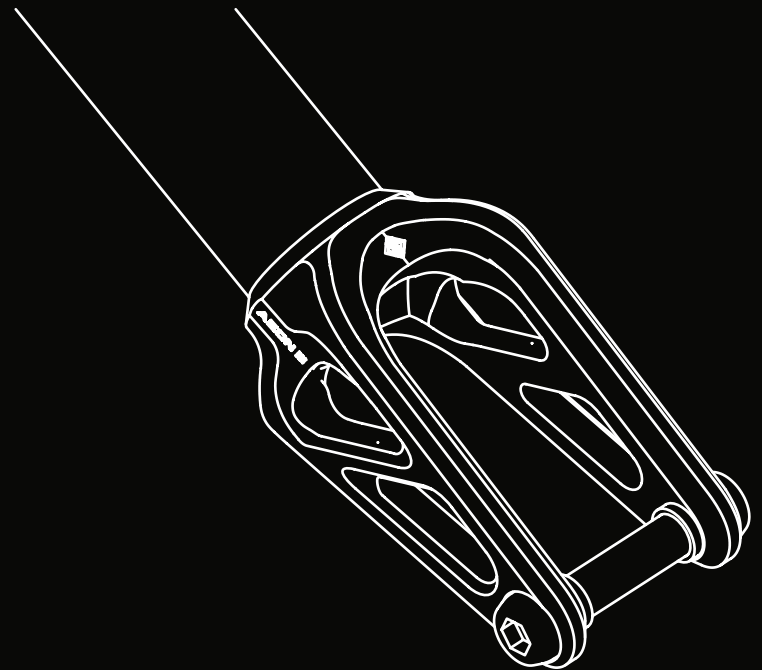
**10**

FORK TUBE  
STRENGTH

**7**

RIGIDITY

**6**





# MAJESTY III 30MM SCS FORK

TIMELESS CLASSIC

RIDING  
CATEGORY

**STREET**

LEVEL

**BEGINNER TO PROFESSIONAL**

## OVERVIEW

We have updated the Majesty yet again! Now lighter, STRONGER AND MORE refined.

Now at least 10% lighter due to a refined fork head; We have kept the same geometry as the previous model but removed unnecessary material from the fork head and added some extra to the tube where it is most needed. The changes have made the fork 10% lighter and stronger in all the right places making the Majesty III perfect for intense street riding.

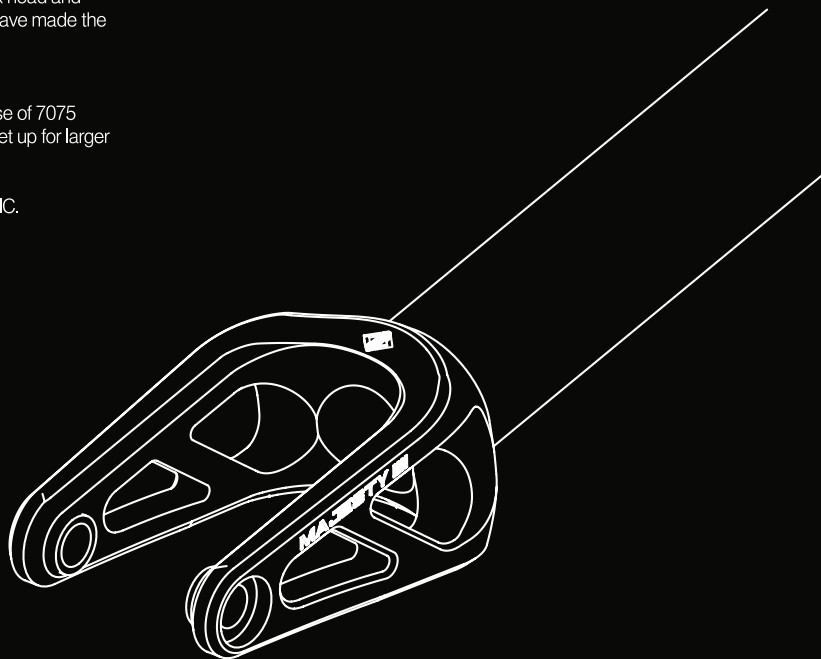
We have also managed to maintain its incredible strength due to the use of 7075 Aluminium. This fork is perfect for riders preferring a stiff and stronger set up for larger wheels.

This fork still fits 30mm wide wheels and is compatible with SCS and HIC.

PROFILE

**STRONG STREET**

RIGID & THRASH PROOF



## FEATURES

Weight: 215g (7.5lb)

SCS & HIC Compatible

30mm Width Wheel Compatible

110mm & 120mm Wheel Compatible

Remastered fork head and legs, and stronger fork tube

7075 Series aluminium for unbeatable strength

Colours: Black / Polished / Smoked Chrome / Neochrome / Re

## PERFORMANCE STATISTICS

LIGHTWEIGHT

**8**

FORK TUBE  
STRENGTH

**9**

RIGIDITY

**8**



# CONTRAST III SCS CLAMP

STREET SUPPORTER

RIDING CATEGORY	<b>STREET</b>
--------------------	---------------

LEVEL	<b>INTERMEDIATE TO PROFESSIONAL</b>
-------	-------------------------------------

## OVERVIEW

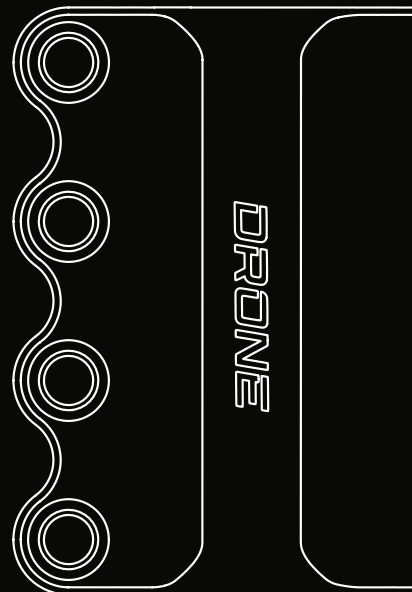
Our Contrast Clamp has been an affordable street staple of Drone for many years, and it is back in a large, more secure form.

It has been designed for punishing street riding, is a bit taller and strong to accommodate taller bars. This SCS has unmatched clamping power and will look sleek as hell while you shred street.

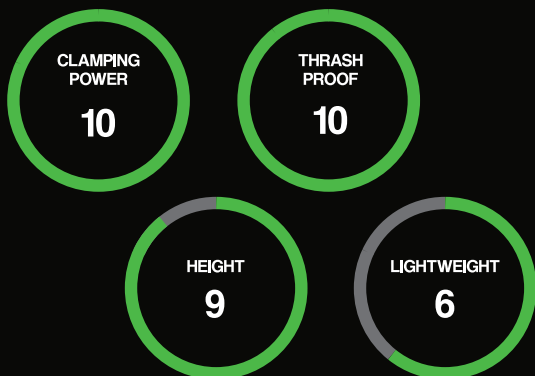
PROFILE	<b>STREET TALL</b>
---------	--------------------

## FEATURES

Weight: 217g (7.65lb)
10mm larger stack SCS with stronger clamping power
Fluted internally
7075 Series aluminium
Colours: Black / Polished / Smoked Chrome / Red / Neochrome
6mm super strong bolts.
Will fit standard and oversized bars and comes with a shim



## PERFORMANCE STATISTICS





# SOLAR 1 DOUBLE CLAMP

TINY CLAMPER

RIDING  
CATEGORY

**PARK**

LEVEL

**BEGINNER TO PROFESSIONAL**

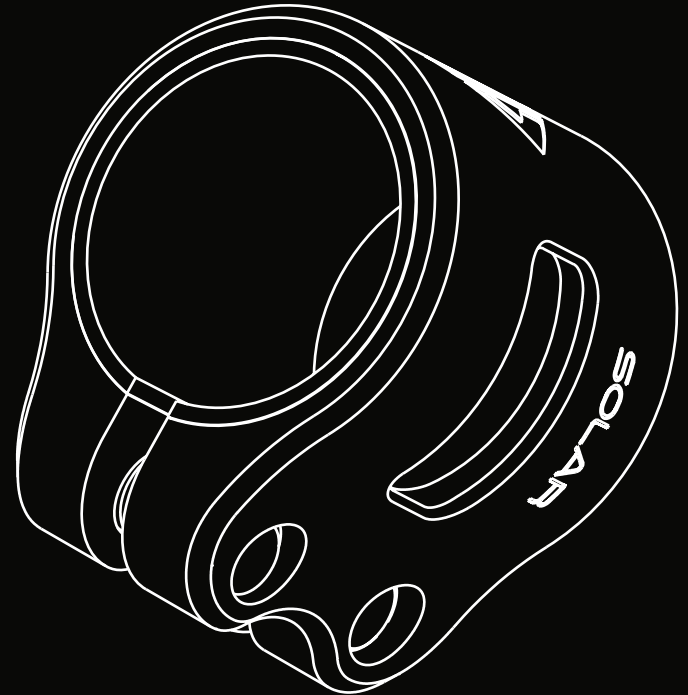
## OVERVIEW

The Solar 1 Double Clamp has been designed to be super light and strong to compliment our lightweight complete scooter range!

Weighing only 70 grams with bolts and using 7075 Series aluminium this is one of the strongest and lightest clamps on the market.

## FEATURES

Oversized and Standard with a shim compatibility
7075 Series Aluminium
Large M6 Bolts
Side Cutouts
6 Colours ( Black, Silver, Smoked Chrome, Red, Blue and Neochrome)
Forge Profile: Lightweight
Compression
Strong, Light, Tight



## PERFORMANCE STATISTICS

CLAMPING  
POWER

**8**

THRASH  
PROOF

**8**

HEIGHT

**6**

LIGHTWEIGHT

**10**





# ACOLYTE GRIPS

RIDING  
CATEGORY

**ALL ROUND**

LEVEL

**BEGINNER TO PROFESSIONAL**

## OVERVIEW

Our Longest grip yet! At 180mm The ACOLYTE grips have been designed exclusively for riders who prefer a longer grip.

They utilise a unique Comfort Max silicone compound that is soft & durable.

The futuristic pattern adds to the functionality of the grips by providing structure laterally down the grip that prevents your hands slipping back and forth.

The grips come with a set of moulded bar ends to perfectly fit any steel, aluminium or titanium bar to keep them protected. Colours include Black, Red, Gum, Grey, Pink, Lilac and Black White Marble.

PROFILE

**SUPER LONG**

LONG, DURABLE, SOFT & GRIPPY

## FEATURES

Longer 180mm length

Weight: 110g for 2

Slimline design with horizontal lines for grippier feel

Bar ends to fit steel, aluminium or titanium bars

ComfortMax soft compound PU

## PERFORMANCE STATISTICS

FEEL

**10**

DURABILITY

**9**

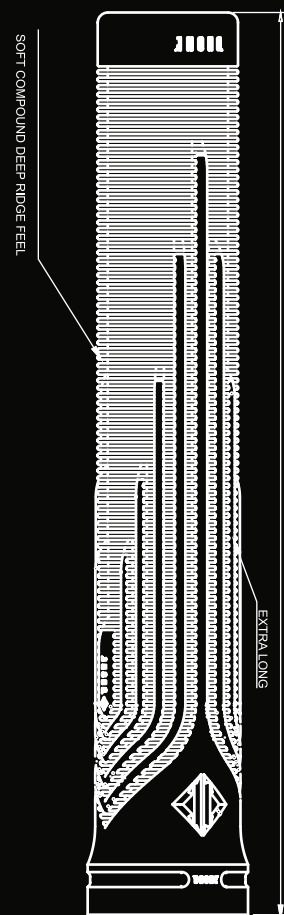
LENGTH

**10**

GRIP

**8**

## LAYERS OF COMFORT





# PARALLAX TITANIUM FEATHER-LIGHT BARS

SPACESHIP PERFORMANCE

RIDING  
CATEGORY

**ALL ROUND**

LEVEL

**BEGINNER TO PROFESSIONAL**

## OVERVIEW

The Drone Parallax Bars are a new era in titanium bars made using the highest Spaceship grade titanium possible – Grade 9. These are from another planet.

Titanium is lighter than steel and 5 x stronger than 6061 Aluminium making it the perfect material for premium scooter handlebars.

The Drone Parallax bars are some of the lightest on the market and come ready to work seamlessly with SCS and HIC compression systems. All bars come with an adapter that deactivates the slit that is pre-cut into the base of each bar.

PROFILE

**TITANIUM T-BAR**

INDESTRUCTIBLE, RIGID AND EVERLASTING

## FEATURES

710 high x 630mm wide / 650mm high x 610mm wide

The strongest Grade 9 titanium

Slit pre-cut in bar for HIC compression

Adapter plug included for conversion from HIC to SCS compression

Reinforced 2.2mm thick crossbar for added strength

## PERFORMANCE STATISTICS

LIGHTWEIGHT

**9**

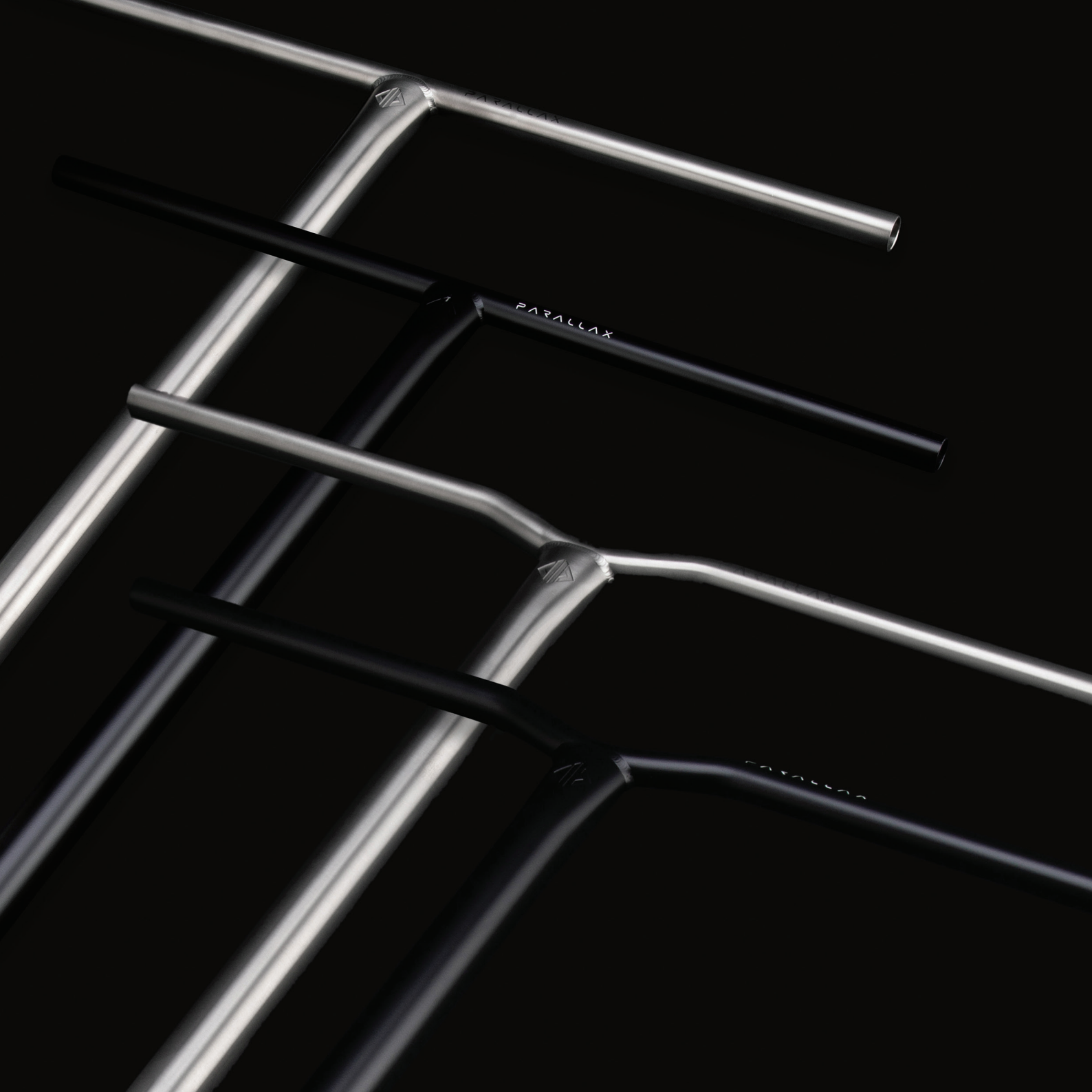
DURABILITY

**10**

RIGIDITY

**7**





# RELIC 3 ALLOY-T-BARS

MR CLASSIC

RIDING  
CATEGORY

**STREET KILLER**

LEVEL

**BEGINNER TO PROFESSIONAL**

## OVERVIEW

The Drone Relic series has been updated! These new Relic 3 bars are the ultimate street bars.

Made with Chromoly 4130 steel, these bars are now 10% lighter than the previous version.

Featuring a new Drone emblem cut-out and thinner down tube these bars will help you nail all those technical street tricks.

PROFILE

**CHOMOLYT-BAR**

CLASSIC, DEPENDABLE, AND DURABLE

## FEATURES

710mm high x 610mm wide / 650mm high x 600mm wide / 660mm high x 600mm wide (HIC)

Chromoly 4130 steel

Refined top and downtube

Emblem CNC cut out

10% lighter

Colour: Black, Translucent Black, Silver

## PERFORMANCE STATISTICS

LIGHTWEIGHT

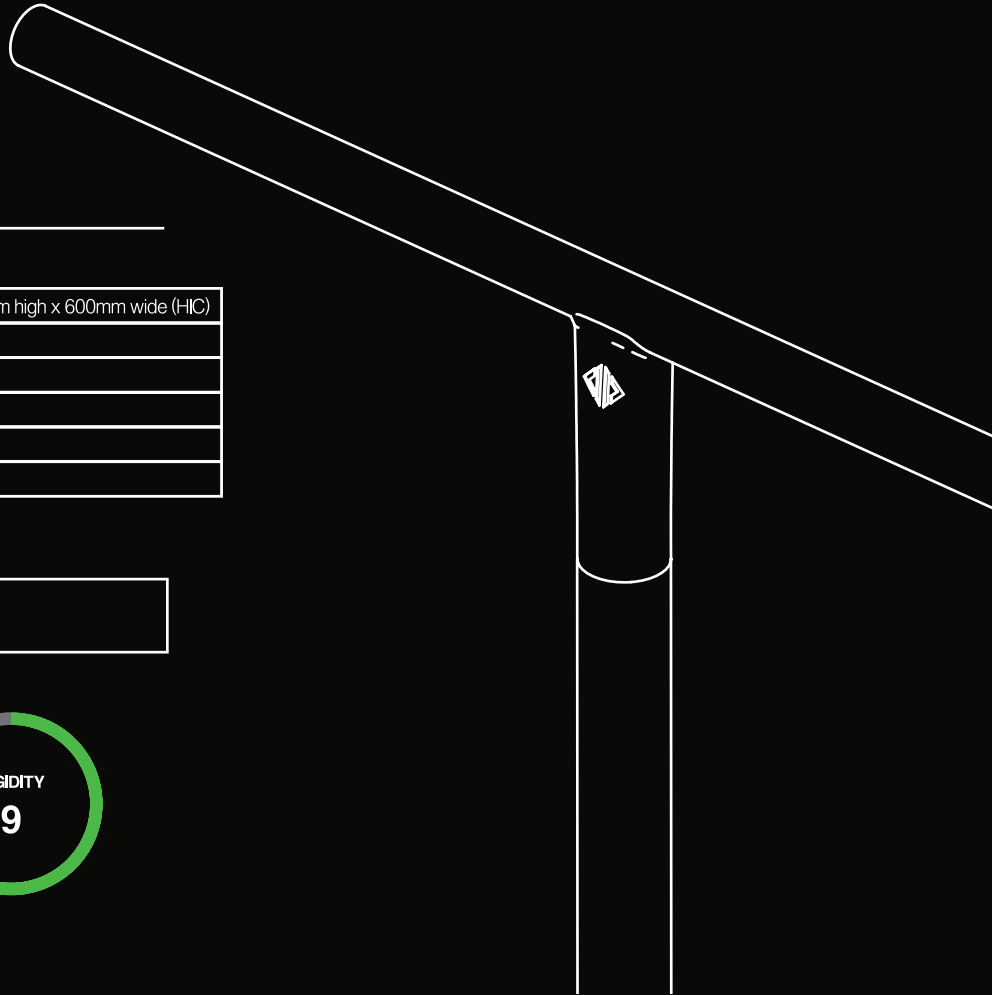
**6**

DURABILITY

**10**

RIGIDITY

**9**





RELIG 



RELIG 

RELIG 

# ULTRA-CERAMIX BEARINGS

## OVERVIEW

Ultra-Ceramic bearings are the gold standard in bearings. Featuring ceramic ball bearings instead of steel; The Ultra-Ceramic ball bearings are made from grade 5 silicone nitride which can be manufactured into a more perfect spherical shape reducing friction massively.

In statistical terms, ceramic ball bearings are 58% lighter, 120% harder, 68% stiffer and 75% smoother than steel bearings, and are therefore faster, more durable and ultimately far superior.

## FEATURES

Pack of 4 or Pack of 8 Abec 9 Ultra-Ceramic bearings
Indestructible silicone nitride ceramic ball bearings
Plastic removable rubber dust covers for easy cleaning
Higher quality steel container and races
Impossibly fast lubrication





# PRISM GRIP TAPE

---

## OVERVIEW

Drone Prism Griptape uses a coloured silica grit to create a beautiful prismatic effect on each sheet.

The grip tape comes in a shimmering shade of gold, blue and red which will add a striking element of customisation to any scooter.

---

## FEATURES

SIZE: 6" X 23"

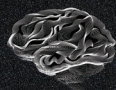


# NEW GRIP TAPES

---



DRONE



DRONE



DRONE

**DRONE**  
SCOOTERING

**DRONE**  
SCOOTERING

**DRONE**  
SCOOTERING

# SHADOW 2 ALU BARS

---

## OVERVIEW

The Classic Shadow 2 Bars but made in super strong high yield 6 Series Aluminium.

## FEATURES

610mm and 650mm High
Super lightweight aluminium
Oversized & IHC ready
Cut off the slit for SCS use
COLOURS: Black, White, and Polished



# ENIGMA 2 SCS CLAMP

## FEATURES

20% lighter - 180 grams

20% stronger heated treated T7075 aluminium

Standard and Oversized with shim

New unique design

6mm bolts

Colours: Black, White, Neochrome & Polished



# SYNERGY 2 HEADSET

## FEATURES

New conical headset cap

Super Drone slick bearings

Colours: Black, Polished, Red, Neochrome & White



# CARBON HEADSET

---

## OVERVIEW

The Carbon Headset is back, and is still one of the lightest headsets on the market.

## FEATURES

Real Carbon fibre headset cap
Super smooth Drone bearings



# DISTRIBUTION

---



## **UK & Czech Republic**

Exs Distribution Ltd  
Unit 7E, Grosvenor Business Centre,  
Grosvenor Street, Ashton-Under-Lyne,  
United Kingdom, OL70RG  
+01613437019  
+79858923608

## **Europe & Russia**

Centrano  
Omega 6  
soften, 8382  
Hinnerup, Denmark  
+45 69 69 36 96

## **USA**

Dissidence Distribution USA  
9340 Dowdy Drive Suite 4,  
San Diego,  
92126 California, United States  
+858 267 6181

## **France**

Dissidence Scooter Shop  
Fabien Delos  
5 rue des érables,  
maurecourt, 78780,  
France  
+33664181000

## **Israel**

EndlessRoll Dist LTD  
Shlomo Zairov,  
Hashloshta 2,  
Tel Aviv,  
Israel

## **Russia**

MCA Limited Distribution  
Starokaluzhskoye road,  
64, bldg 9 Moscow,  
Russia  
117630

## **New Zealand**

MG Distributors  
147 Captain Springs Road,  
Onehunga,  
Auckland 1061, New Zealand  
+64 9 622 2585

## **Australia**

Active Outthere  
14 / 94-102,  
Keys Rd Cheltenham,  
Victoria 3192,  
Australia  
+61414607979

## **Switzerland**

AB2H – Nomadeshop  
37 Bd Bourdon Paris, 75004,  
France  
0033144549447

## **Japan**

SOGO CO., LTD.  
57-20 Shimizugaoka  
Yatomicho Mizuhok,  
Nagoya, 467-0038,  
Aichi, Japan  
+819066175090

## **Singapore & South East Asia**

Kevin Mok  
KarLaTech Pte Ltd  
362 Upper Paya Lebar Rd  
Singapore (534963)  
+65 9097 8769

[WWW.DRONESCOOTERS.COM](http://WWW.DRONESCOOTERS.COM)