

**FOR PUBLIC
RELEASE**

Инструкция пользователя

Пара Ретро OneDer V8 - Bluetooth колонка СТЕРЕО, с аккумулятором, для использования в помещении

Артикул: OneDer V8

Спасибо за совершенную покупку в нашем магазине

**FOR PUBLIC
RELEASE**



**FOR PUBLIC
RELEASE**

Separate **TWINS**
stereo speakers

Product Petails Manual

Product description

1. Perfect 3D stereo sound effect, shock your understanding of music.
2. Can be used alone or in combination.
 - a. Single use: The product itself is a speaker, extra One can be shared with others for use;
 - b. Use in combination: When the two are adsorbed together, the sound will be louder. If the sound quality is separated, it will be more perfect and there will be super sound effects.



3. Can be adsorbed on iron objects, allowing the speaker to be placed in a better place, resulting in a better sense of experience.
4. Two speakers, one key can automatically match each other, easy to use.

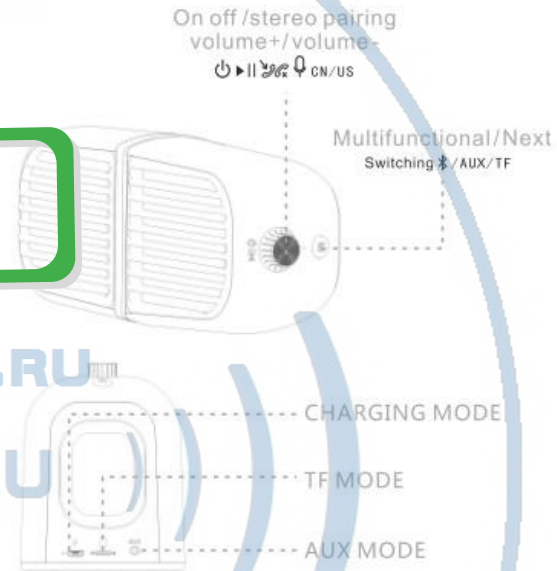
**FOR PUBLIC
RELEASE**

Product parameters

Wireless name : OneDer V8
Wireless Version : 4.2
Wireless range : 10M
Battery : 1000mAh
Working voltage: 3.7V
SNR: 90dB
Charging parameters: 5V 500mAh
Charging time: about 4 hours
Play time: about 6 hours
Product Size : L196.4*W77.8*H63.2mm
The speaker specification: 45mm 5w3Ω
Frequency response range: 50HZ~20KHZ
Product weight : 276g*2



Key definition

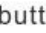


Bluetooth pairing

Single speaker use


1. Long press the power button to turn on the speaker;
2. The blue light flashes, find "OneDer V8" in the mobile phone Bluetooth interface;
3. The connection is successful, the blue light will turn on and you can use it;
4. When playing music, the blue light flashes slowly.

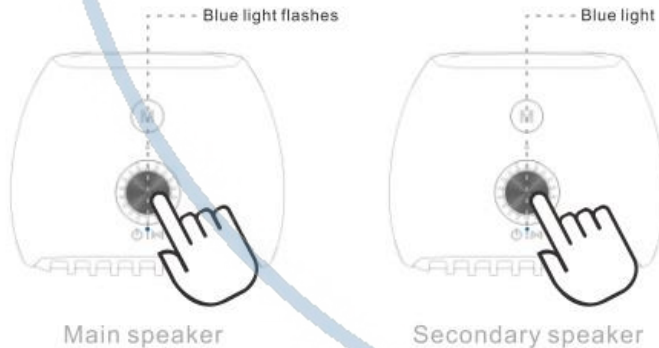
Two speakers use

1. Long press the power button , to turn both speakers on and the blue light flashes.

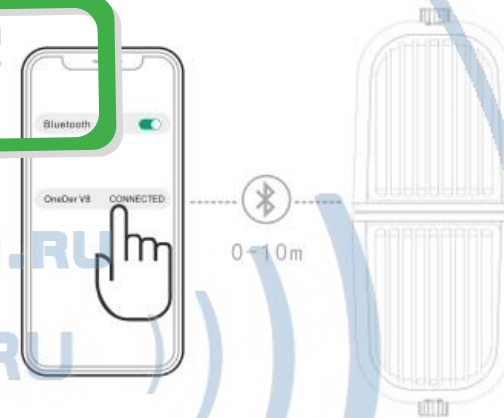
Blue light flashes



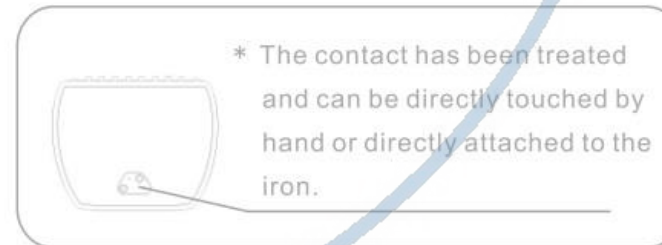
2. Tap the power button  of one of the speakers, and the devices will automatically connect to each other and make a prompt sound. Secondary speaker blue light is on. This step is only required for the first operation. The two speakers will be connected automatic



3. Open the mobile phone Bluetooth, search for pairing name "OneDer V8" connection pairing, the host successfully matches the blue light long;



4. Paired two speakers, if you first open a play music, when the other is open, two speakers will automatically be paired;
5. When talking, only the main speaker receiver works, the secondary speaker does not work.



FOR PUBLIC RELEASE

P2PWIFICAM.RU
WIFISEC.RU
DIVARY.RU

**FOR PUBLIC
RELEASE**

Note: Memory card mode and AUX mode support only single speakers

Charge Indicator

1. When the single speaker is charged, the charging indicator lights up red and is full;
2. After the two loudspeakers are aligned, they only need to be connected to one of the charging ports to charge the two at the same time. The charging speed remains the same. When charging, the charging red light of the two speakers will be on, and the lamp will be switched off after full charge.
3. When charging in combination, make sure that the two speakers are in proper alignment.

Precautions

1. The primary and secondary speakers during the call, only the speaker of the main speaker will work, so that it can be more clear.
2. When paired, the two speakers are placed in different places and sound better.
3. This product does not support waterproof, please put it in a dry place.

**FOR PUBLIC
RELEASE**

Наслаждайтесь использованием.