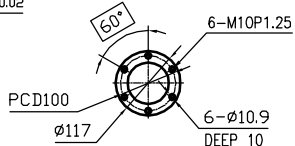
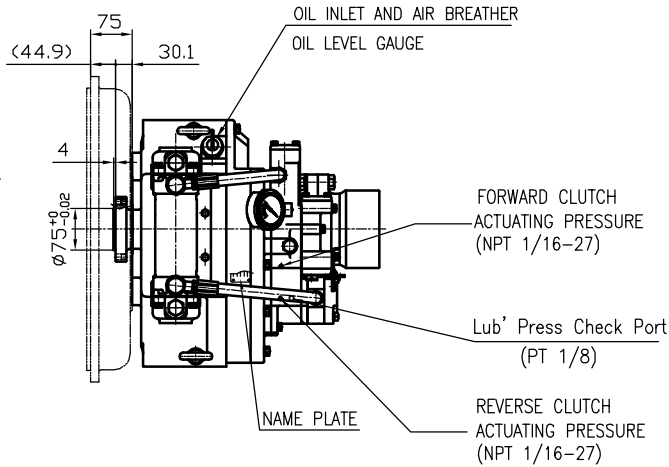


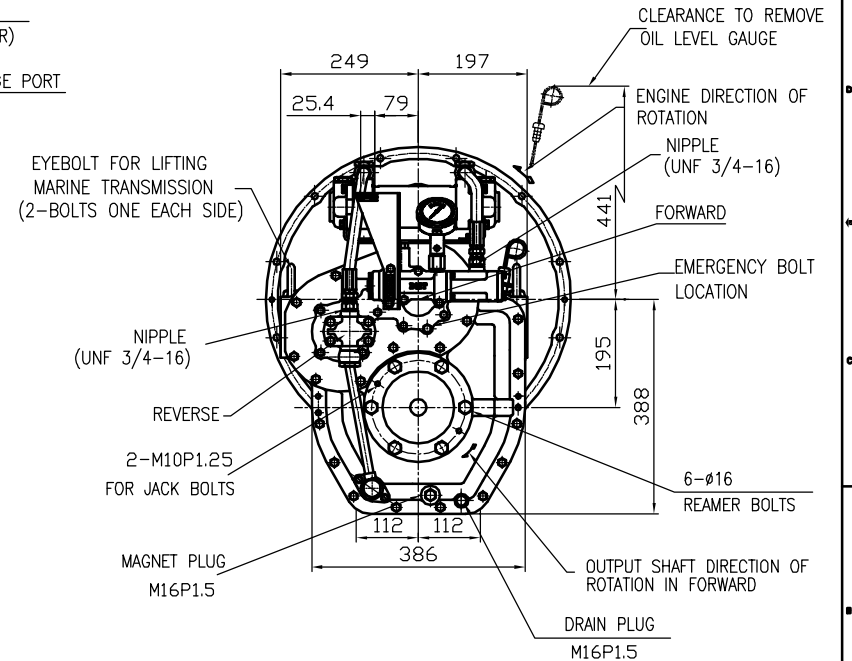
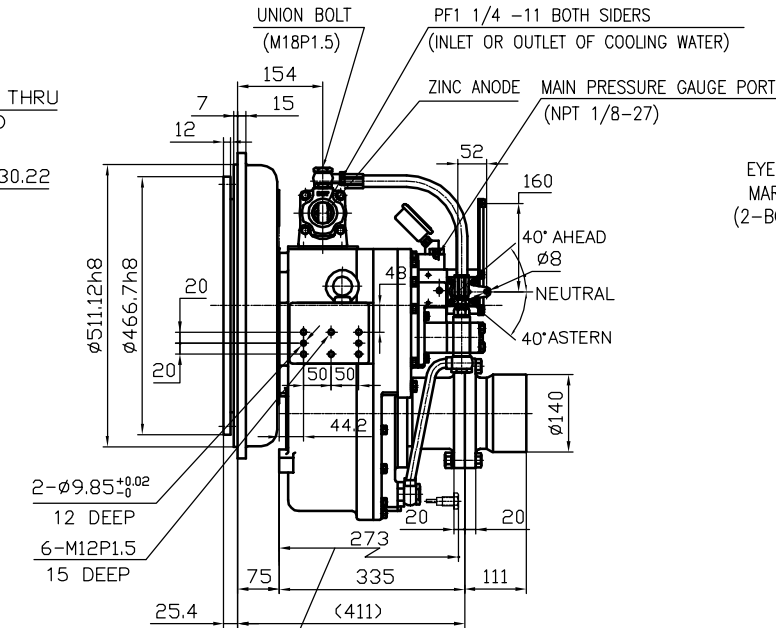
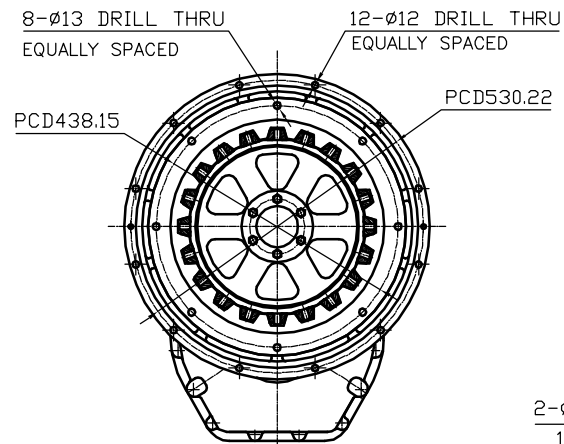
OUTPUT SHAFT COUPLING & PROPELLER COUPLING DIMENSION



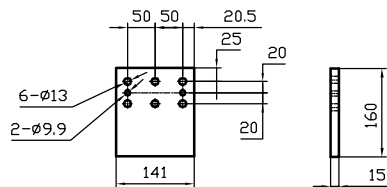
INPUT COUPLING DIMENSION



DMT 110A MARINE TRANSMISSION SPECIFICATION			
GEAR RATIO	1.77	2.09	2.42 2.82 3.19
TOTAL WEIGHT	APPROX. 212 kg(DRY)		
OIL CAPACITY	APPROX. 4 L		
OIL VISCOSITY	SAE # 30		
OIL PRESSURE	1.96 ~ 2.35 MPa	CLUTCH OIL	
DIRECTION OF ROTATION	INPUT	C.C.W VIEWED FROM THE STERN	
	OUTPUT	C.W VIEWED FROM THE STERN	
OIL CHANGE INTERVAL	THE FIRST 100HOURS OF INITIAL OPERATION AND EVERY 1000HOURS THEREAFTER		
SHIFTING LIMIT	UNDER 50% OF THE RATED ENGINE SPEED		
OIL COOLER	WATER FLOW 40 ~ 60L/min		TEMPERATURE OF COOLING WATER
			MAX 32°C
OPERATING TORQUE OF SHIFTING LEVER	UNDER 2.94Nm		



REMARK
 1.HOUSING: SAE#1
 2.DRIVING RING: SAE 14"
 3.COULING TYPE : RUBBER



BRACKET DIMENSION

TOLERANCE ON		PART NO.		PART NAME		QTY		MATERIAL		SIZE		REMARKS	
FRACTIONS	DECIMALS	ANGLES	NO.	NAME	TYPE	SCALE	DATE	DATE	SCALE	DATE	DATE	DATE	DATE
±	±	±					2012.08.18		N/S				
APPROVED BY		CHECKED BY		DRAWN		DESIGNED		NAME		DWG. NO.		REVISION	
JK.Kim		KS.Han		KC.Yoon				MARINE TRANSMISSION		1100GA~E-114RC		000	
D-I INDUSTRIAL										CODE ID. NO.			