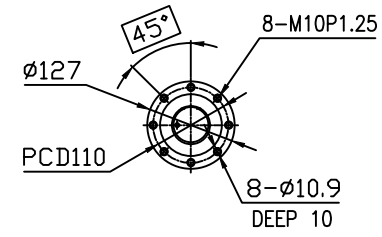
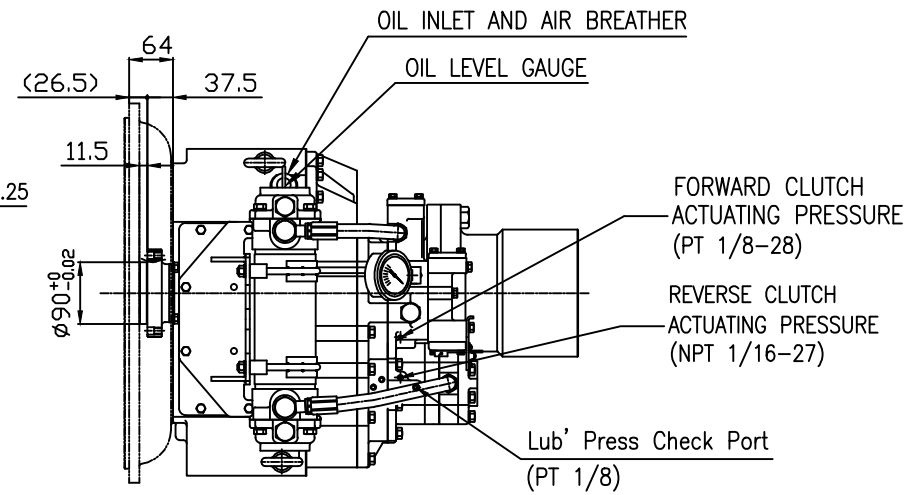


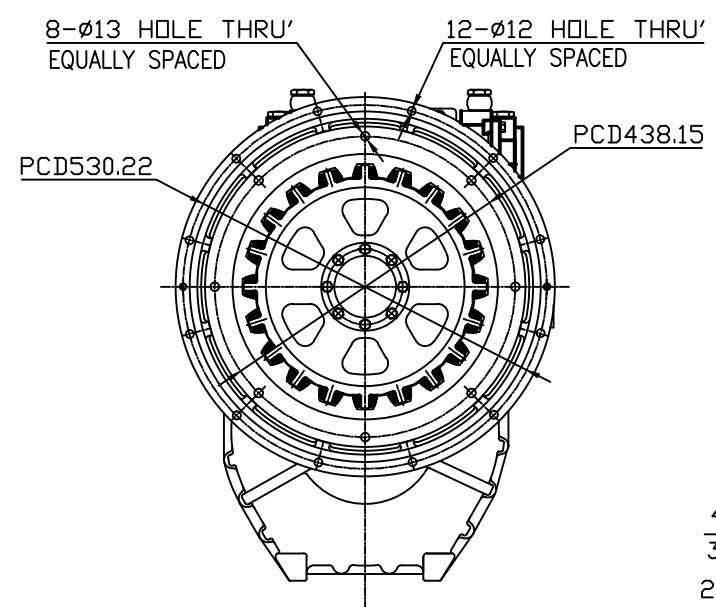
OUTPUT SHAFT COUPLING & PROPELLER COUPLING DIMENSION



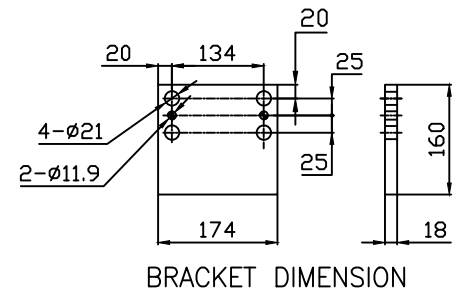
INPUT COUPLING DIMENSION



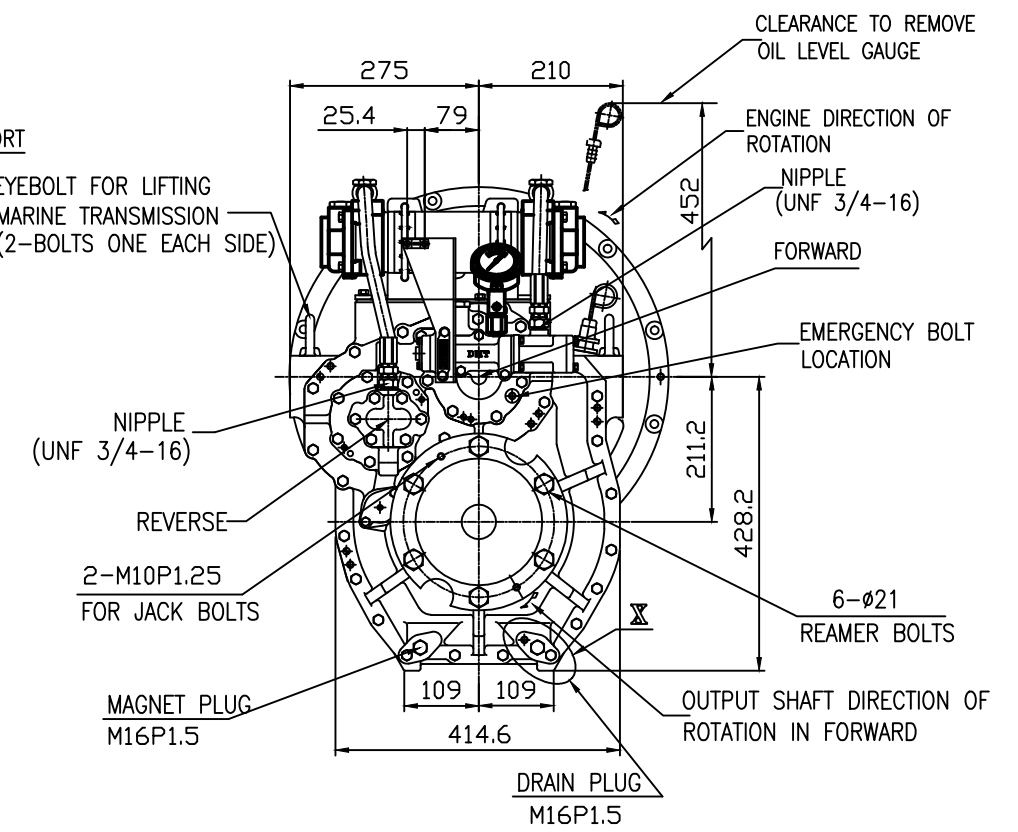
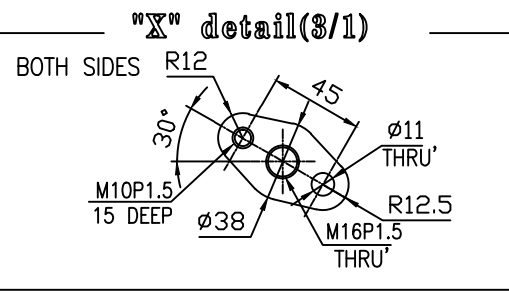
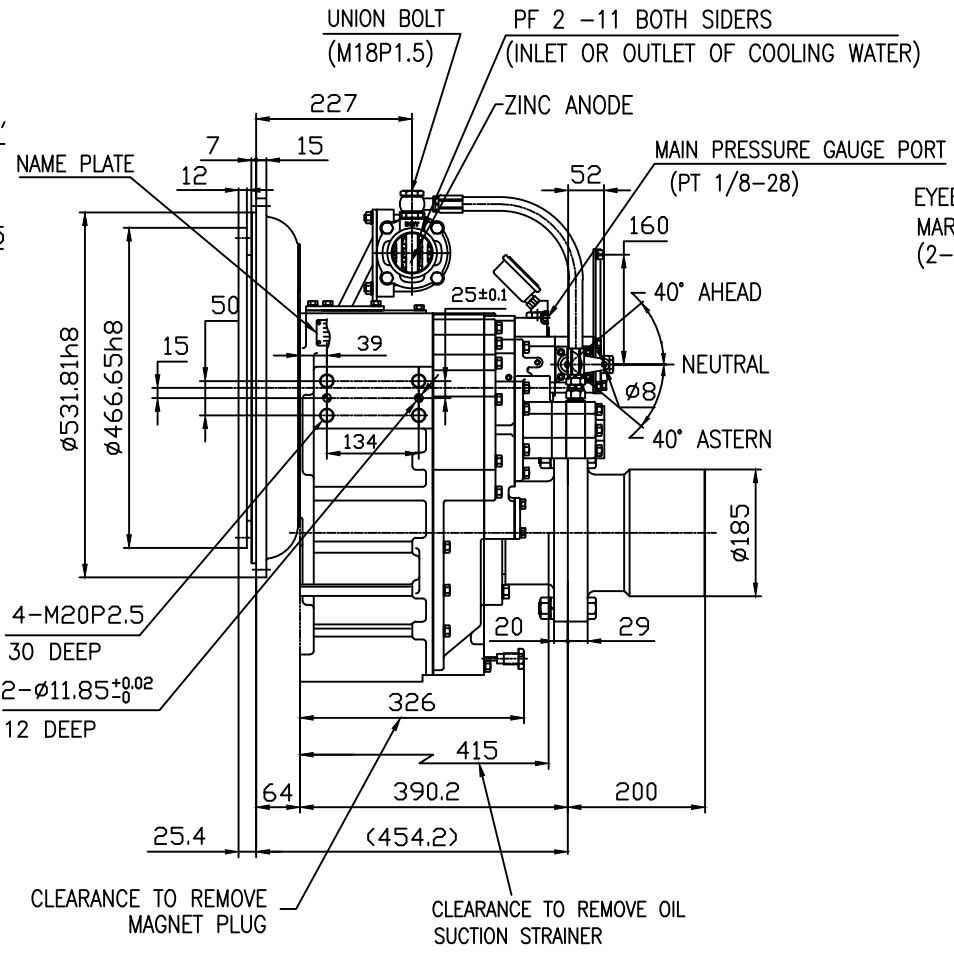
DMT 200H MARINE TRANSMISSION SPECIFICATION			
GEAR RATIO	1.83, 2.09, 2.52, 3.08, 3.43		
TOTAL WEIGHT	APPROX. 300 kg(DRY)		
OIL CAPACITY	APPROX. 5.5 L		
OIL VISCOSITY	SAE # 30		
OIL PRESSURE	1.96 ~ 2.35 MPa	CLUTCH OIL	
DIRECTION OF ROTATION	INPUT	C.C.W VIEWED FROM THE STERN	
	OUTPUT	C.W VIEWED FROM THE STERN	
OIL CHANGE INTERVAL	THE FIRST 100HOURS OF INITIAL OPERATION AND EVERY 1000HOURS THEREAFTER		
SHIFTING LIMIT	UNDER 50% OF THE RATED ENGINE SPEED		
OIL COOLER	WATER FLOW 40 ~ 60L/min		TEMPERATURE OF COOLING WATER MAX 32°C
OPERATING TORQUE OF SHIFTING LEVER	UNDER 2.94Nm		



REMARK  
 1.HOUSING: SAE#1  
 2.DRIVING RING: SAE 14"  
 3.COULING TYPE : RUBBER



BRACKET DIMENSION



TOLERANCE ON		PART NO.		PART NAME		Q'TY		MATERIAL		SIZE		REMARKS	
FRACTIONS	DECIMALS	ANGLES											
±	±	±											
1 초과 4 이하		± 0.3	± 0.1	± 0.05	DATE 2013.02.12		SCALE 1/1		TYPE DMT200H		ORIGINAL DWG. NO.		
4		± 0.5	± 0.2	± 0.07	APPROVED BY JK.Kim		CHECKED BY KS.Han		NAME MARINE TRANSMISSION		REVISION		
16		± 0.7	± 0.3	± 0.1	DRAWN KC.Yoon		DESIGNED		DWG. NO. 19500GA~E-114RC		REV. 000		
63		± 1.2	± 0.5	± 0.2					DWG. NO. 19500GA~E-114RC		REV. 000		
250		± 2.0	± 0.8	± 0.3					DWG. NO. 19500GA~E-114RC		REV. 000		



SIZE A 3

CODE ID. NO.