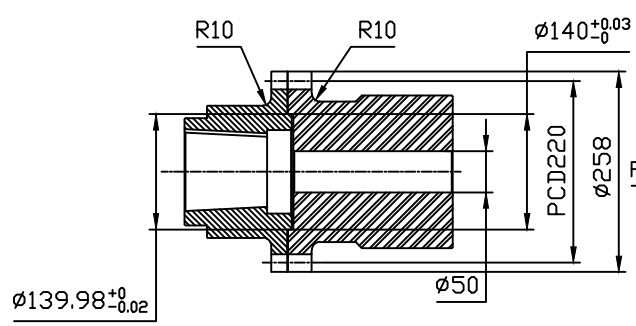
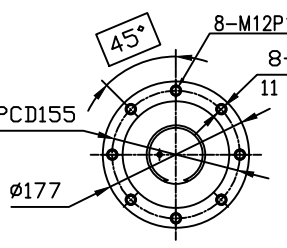


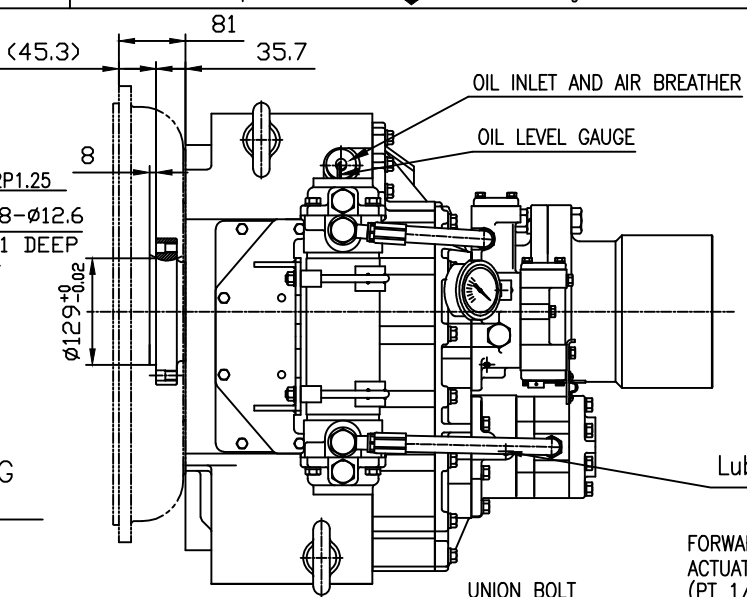
000
24000GA~E-114RC
DONGSUNG
INC.



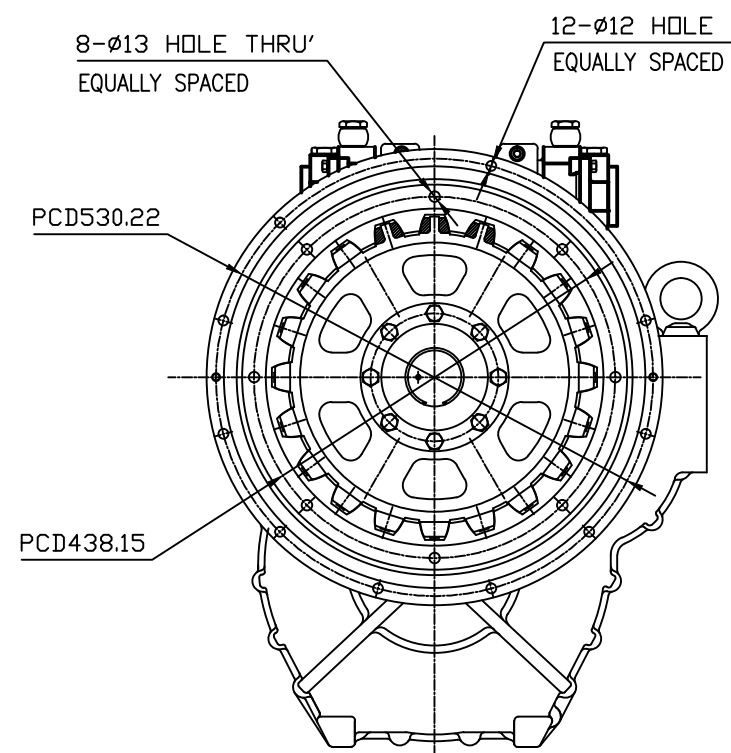
OUTPUT SHAFT COUPLING & PROPELLER COUPLING DIMENSION



INPUT COUPLING DIMENSION



DMT240H MARINE TRANSMISSION SPECIFICATION	
GEAR RATIO	1.50 , 1.97 , 2.44 , 2.93 , 3.40
TOTAL WEIGHT	APPROX. 400 Kg(DRY)
OIL CAPACITY	APPROX. 8L
OIL VISCOSITY	SAE # 30
OIL PRESSURE	1.96 ~ 2.54 MPa CLUTCH OIL
DIRECTION OF ROTATION	INPUT C.C.W VIEWED FROM THE STERN
IN FORWARD	OUTPUT C.W VIEWED FROM THE STERN
OIL CHANGE INTERVAL	THE FIRST 100HOURS OF INITIAL OPERATION AND EVERY 1000HOURS THEREAFTER
SHIFTING LIMIT	UNDER 50% OF THE RATED ENGINE SPEED
OIL COOLER	WATER FLOW 40 ~ 60 L/m TEMPERATURE OF COOLING WATER MAX 32°C
OPERATING TORQUE OF SHIFTING LEVER	UNDER 2.94Nm

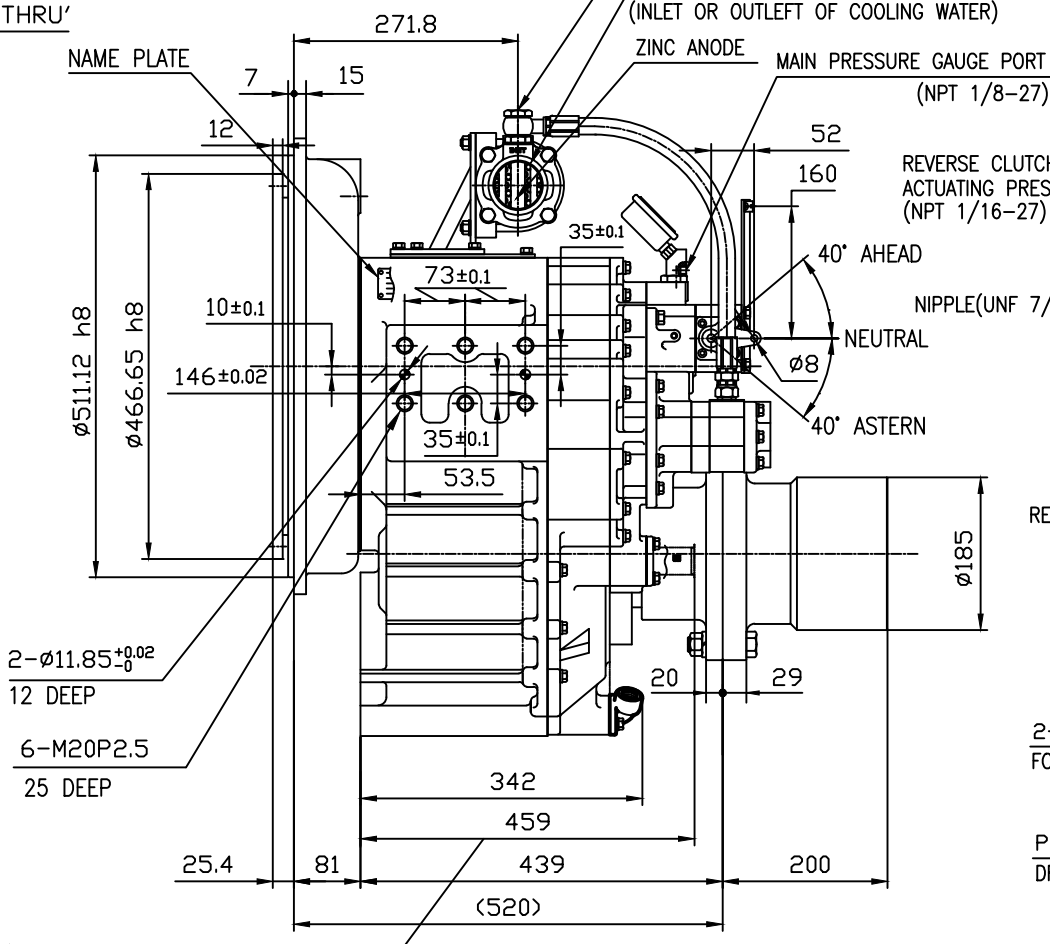


8-Ø13 HOLE THRU' EQUALLY SPACED

12-Ø12 HOLE THRU' EQUALLY SPACED

PCD530.22

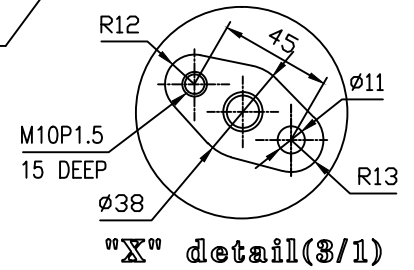
PCD438.15



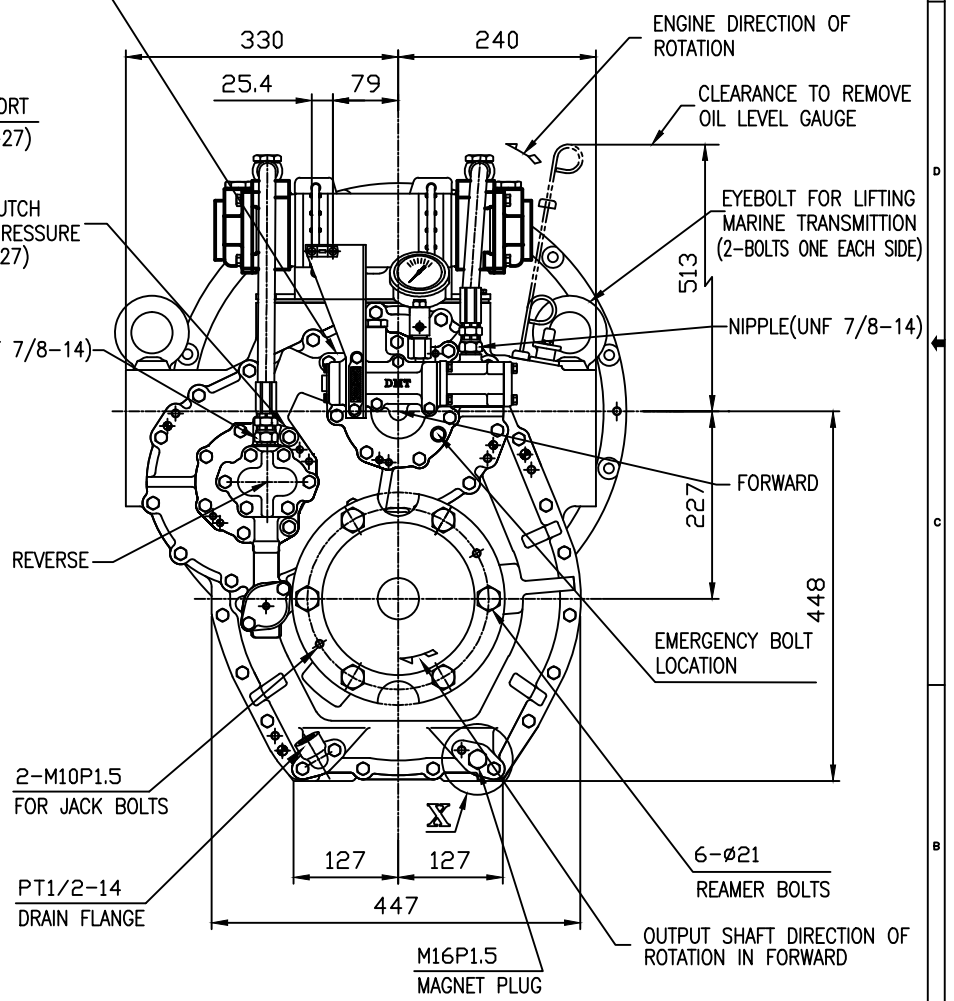
2-Ø11.85±0.02 12 DEEP

6-M20P2.5 25 DEEP

CLEARANCE TO REMOVE OIL SUCTION STRAINER



"X" detail(3/1)



ENGINE DIRECTION OF ROTATION

CLEARANCE TO REMOVE OIL LEVEL GAUGE

EYEBOLT FOR LIFTING MARINE TRANSMISSION (2-BOLTS ONE EACH SIDE)

NIPPLE(UNF 7/8-14)

FORWARD

EMERGENCY BOLT LOCATION

2-M10P1.5 FOR JACK BOLTS

PT1/2-14 DRAIN FLANGE

6-Ø21 REAMER BOLTS

OUTPUT SHAFT DIRECTION OF ROTATION IN FORWARD

M16P1.5 MAGNET PLUG

- REMARK
- HOUSING: SAE#1
 - DRIVING RING: SAE 14"
 - COULING TYPE : RUBBER

BRACKET DIMENSION

TOLERANCE ON		PART NO.		PART NAME		Q'TY		MATERIAL		SIZE		REMARKS	
FRACTIONS	DECIMALS	ANGLE											
±	±	±											
1/100	0.01	±0.1											
1/50	0.02	±0.2											
1/25	0.04	±0.3											
1/10	0.1	±0.5											
1/5	0.2	±1.0											
1/2	0.5	±2.0											

DATE	2013.02.12	SCALE	1/1
APPROVED BY	JK.Kim	CHECKED BY	KS.Han
DRAWN	KC.Yoon	DESIGNED	
TYPE			
DMT240H			
NAME			
MARINE TRANSMISSION			
DWG. NO.			
24000GA~E-114RC			
REV.			
000			
D-I INDUSTRIAL			
SIZE			
A3			
CODE ID. NO.			