



www.esbe.se



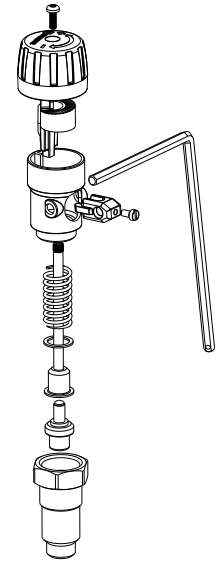
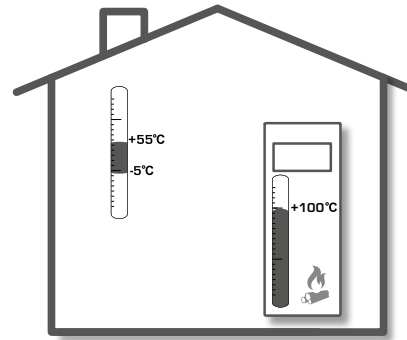
**SERIES ATA200**



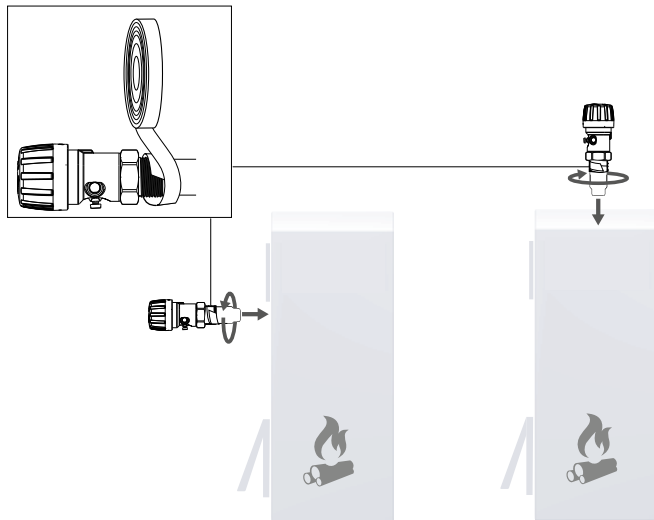
**NO.1 IN HYDRONIC SYSTEM CONTROL**



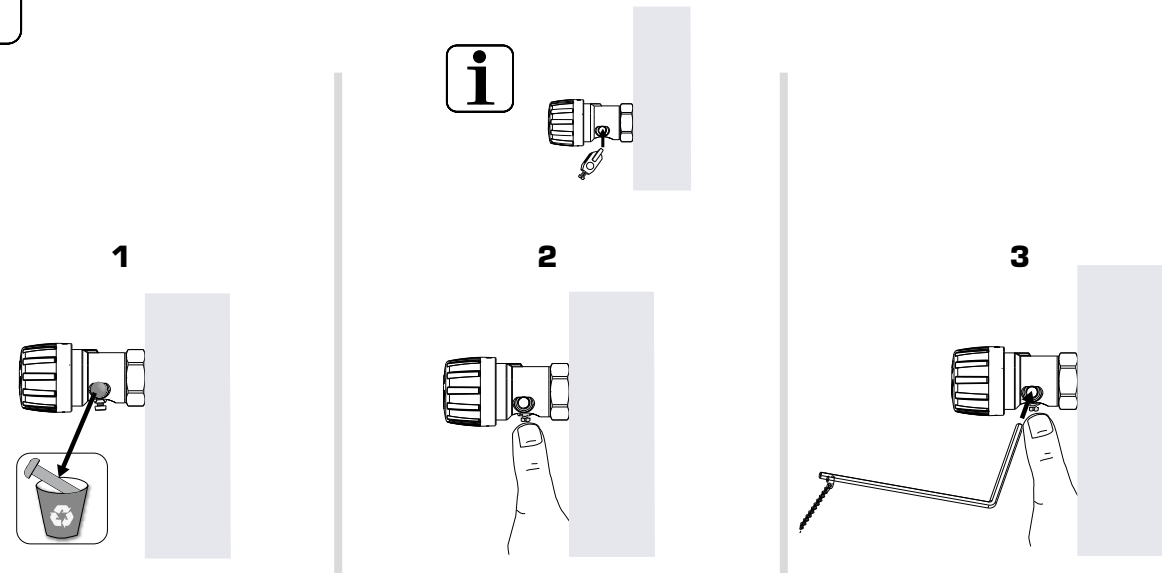
Series ATA212  
Series ATA222



**1**

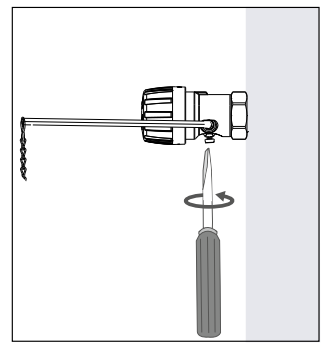
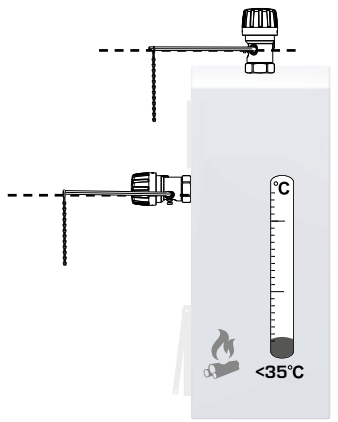
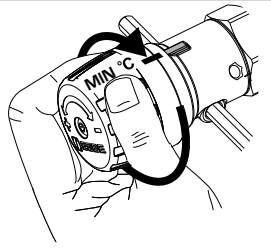


**2**



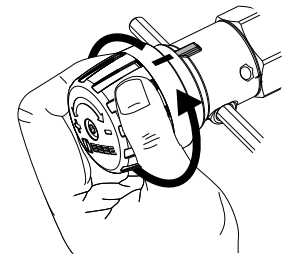
**3**

ATA200: Min 35°C/Min 60°C

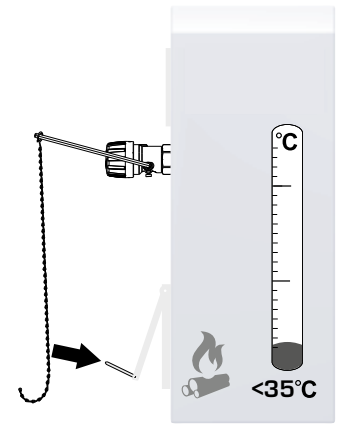


**4**

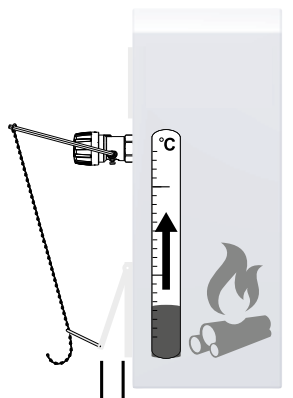
°C MAX ?



**5**

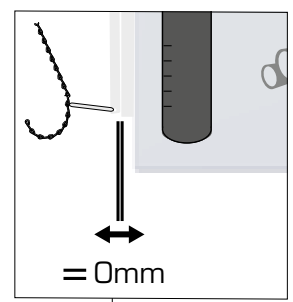
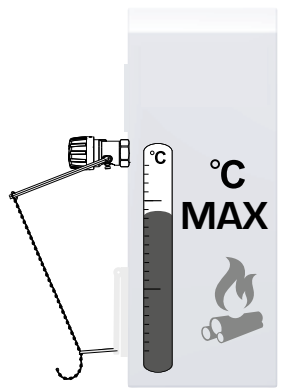


**6**



≠ 0mm

**7**



**i**

≠ 0mm

