



内 径 车 刀 套 筒

SLEEVES FOR BORING BARS



FIG-1

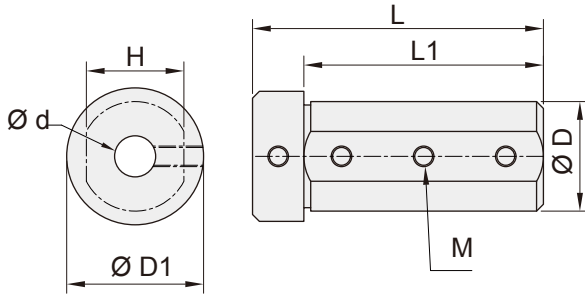


FIG-2

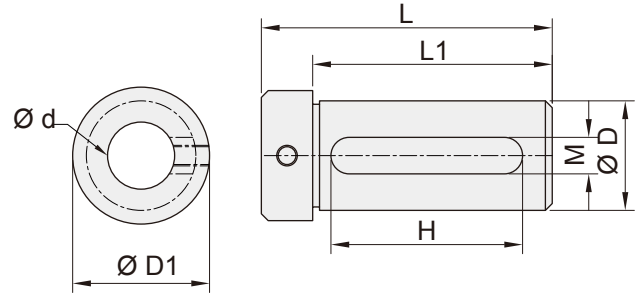
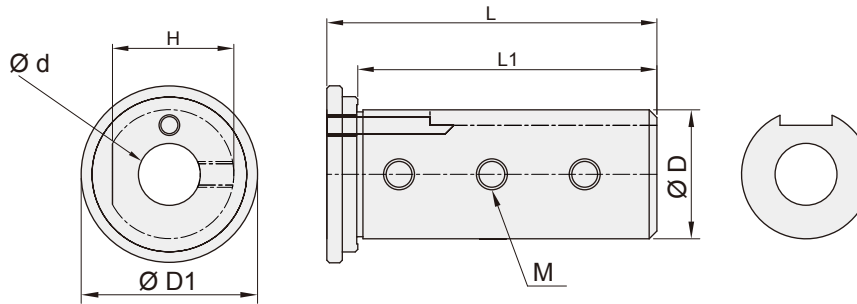

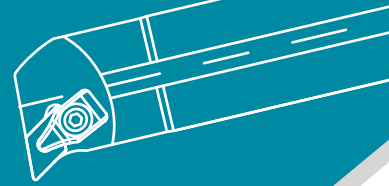


FIG-3



Item code	SHAPE	Coolant 	Dimensions,mm							Weight (kg)					
			d	D	L	L1	D1	H	M						
NC1603	FIG-1	--	3	16	62	55	20	14.5	M4	0.11					
NC1604	FIG-1	--	4						M5	0.10					
NC1605	FIG-1	--	5						0.08						
NC1606	FIG-1	--	6						0.08						
NC1608	FIG-1	--	8						0.07						
NC1610	FIG-2	--	10	20	67	60	27	17.5	M5	0.06					
NC1612	FIG-2	--	12							0.06					
NC2004	FIG-1	--	4	20	52	45	25	17.5	M6	0.17					
NC2005	FIG-1	--	5							0.17					
NC2006	FIG-1	--	6							M6	0.16				
NC2007	FIG-1	--	7								0.15				
NC2008	FIG-1	--	8								0.14				
NC2010	FIG-1	--	10							0.13					
NC2012	FIG-1	--	12						0.12						
NC2014	FIG-2	--	14						55	13	0.09				
NC2015	FIG-2	--	15								0.08				
NC2016	FIG-2	--	16								0.07				
NC20S06	FIG-1	--	6						20	52	45	25	17.5	M6	0.13
NC20S08	FIG-1	--	8												0.12
NC20S10	FIG-1	--	10	0.11											
NC20S12	FIG-1	--	12	0.10											
NC20S16	FIG-2	--	16	40	11	0.06									

SLEEVES FOR BORING BARS



內徑車刀
BORING BARS


外徑車刀
TOOL HOLDERS

牙刀 & 開槽刀
THREADING & GROOVING

銑刀
MILLING

孔加工
BORING TOOLS COMPONENTS

配件
SPARE PARTS

Item code	SHAPE	Coolant 	Dimensions,mm							Weight (kg)						
			d	D	L	L1	D1	H	M							
NEW NC25-04A	FIG-3	•	4	25	64	58	35	23.5	M4	0.27						
NEW NC25-05A	FIG-3	•	5						M5	0.26						
NEW NC25-06A	FIG-3	•	6						M6	0.26						
NEW NC25-07A	FIG-3	•	7						0.25							
NEW NC25-08A	FIG-3	•	8						0.25							
NEW NC25-09A	FIG-3	•	9						0.24							
NEW NC25-10A	FIG-3	•	10						0.23							
NEW NC25-11A	FIG-3	•	11						0.23							
NC25-12A	FIG-3	•	12						0.22							
NC2514	FIG-2	--	14						25	64	58	35	51	12	0.20	
NC2515	FIG-2	--	15	0.19												
NC2516	FIG-2	--	16	0.18												
NEW NC2517	FIG-2	--	17	0.17												
NC2518	FIG-2	--	18	0.16												
NC2520	FIG-2	--	20	0.13												
NC2522	FIG-2	--	22	0.10												
NC3204	FIG-1	--	4	32	80	65	38	29.5							M5	0.54
NC3205	FIG-1	--	5												M6	0.54
NC3206	FIG-1	--	6												85	70
NC3207	FIG-1	--	7						0.63							
NC3208	FIG-1	--	8						0.54							
NC3210	FIG-1	--	10		100	85	38	77	14	M8	0.60					
NC3212	FIG-1	--	12							0.58						
NC3214	FIG-1	--	14							0.55						
NC3215	FIG-1	--	15							0.55						
NC3216	FIG-1	--	16							0.52						
NC3218	FIG-1	--	18	0.49												
NC3220	FIG-2	--	20	32	100	85	38	77	14	0.40						
NC3222	FIG-2	--	22							0.36						
NC3225	FIG-2	--	25							0.28						

※目錄中規格和工具尺寸如有變更，依實際出貨為主，本公司保有異動權利。

Please note that products are continuously updated. Product changes subject to future amendments.

Please contact us regarding the tools not mentioned in the catalog.

FIG-1

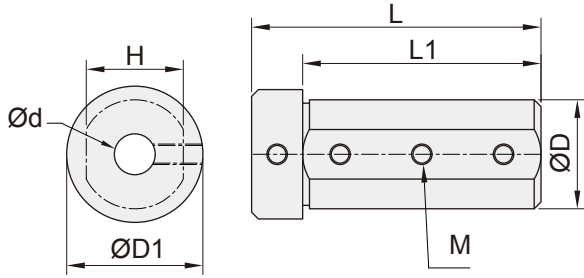


FIG-2

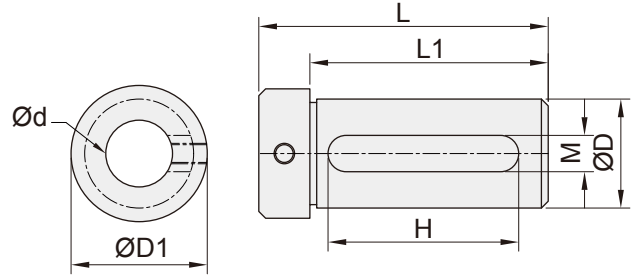


FIG-3

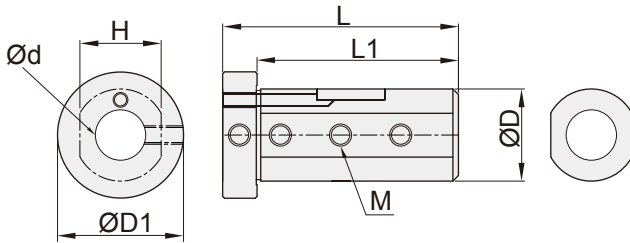
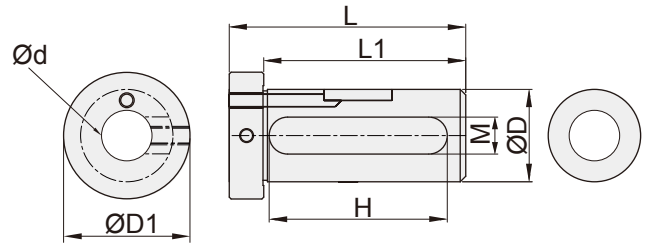



FIG-4



Item code	SHAPE	Coolant 	Dimensions,mm							Weight (kg)	
			d	D	L	L1	D1	H	M		
NEW NC4005	FIG-1	--	5	40	100	85	46	38	M6	1.03	
NC4006	FIG-1	--	6							1.00	
NC4007	FIG-1	--	7							1.01	
NC4008	FIG-1	--	8							M8	0.99
NC4010	FIG-1	--	10								0.93
NC4012	FIG-1	--	12					0.94			
NC4014	FIG-1	--	14					0.90			
NC4015	FIG-1	--	15					0.89			
NC4016	FIG-1	--	16					0.87			
NC4018	FIG-1	--	18					0.83			
NC4020	FIG-2	--	20	40	100	85	46	77	14	0.71	
NC4022	FIG-2	--	22							0.69	
NC4025	FIG-2	--	25							0.60	
NC4032	FIG-2	--	32							0.38	

BORING BARS
內徑車刀

TOOL HOLDERS
外徑車刀

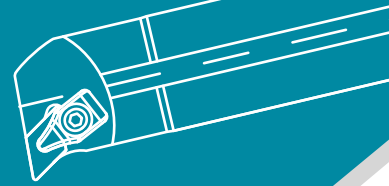
THREADING & GROOVING
牙刀 & 開槽刀

MILLING
銑刀

BORING TOOLS COMPONENTS
孔加工

SPARE PARTS
配件

SLEEVES FOR BORING BARS



	Item code	SHAPE	Coolant 	Dimensions,mm						Weight (kg)			
				d	D	L	L1	D1	H		M		
NEW	NC40-05A	FIG-3	•	5	40	100	85	46	38	M6	0.99		
NEW	NC40-06A	FIG-3	•	6							0.99		
NEW	NC40-08A	FIG-3	•	8							M8	0.97	
NEW	NC40-10A	FIG-3	•	10								0.95	
NEW	NC40-12A	FIG-3	•	12						0.93			
NEW	NC40-13A	FIG-3	•	13						0.92			
NEW	NC40-14A	FIG-3	•	14						0.89			
NEW	NC40-16A	FIG-3	•	16						0.86			
NEW	NC40-18A	FIG-3	•	18						0.82			
NEW	NC40-20A	FIG-4	•	20						77	14	0.71	
NEW	NC40-25A	FIG-4	•	25	0.60								
	NC5008	FIG-1	--	8	50	100	85	58	48	M8	1.58		
	NC5010	FIG-1	--	10							1.56		
	NC5012	FIG-1	--	12							1.53		
NEW	NC5014	FIG-1	--	14							1.51		
	NC5016	FIG-1	--	16							1.47		
NEW	NC5018	FIG-1	--	18							1.43		
	NC5020	FIG-1	--	20							1.39		
	NC5025	FIG-1	--	25							1.26		
	NC5032	FIG-2	--	32							77	14	0.95
	NC5040	FIG-2	--	40									0.71
	NC6020	FIG-1	--	20	60	120	110	68	57	M8	2.44		
	NC6025	FIG-1	--	25							2.28		
	NC6032	FIG-1	--	32							1.98		
	NC6040	FIG-1	--	40							1.55		
	NC6050	FIG-2	--	50							120	110	100

內徑車刀
BORING BARS

外徑車刀
TOOL HOLDERS

牙刀 & 開槽刀
THREADING & GROOVING

銑刀
MILLING

孔加工
BORING TOOLS COMPONENTS

配件
SPARE PARTS

※目錄中規格和工具尺寸如有變更，依實際出貨為主，本公司保有異動權利。

Please note that products are continuously updated. Product changes subject to future amendments.

Please contact us regarding the tools not mentioned in the catalog.

BORING BARS
內徑車刀

TOOLHOLDERS
外徑車刀

THREADING & GROOVING
牙刀 & 開槽刀

MILLING
銑刀

BORING TOOLS COMPONENTS
孔加工

SPARE PARTS
配件

FIG-1

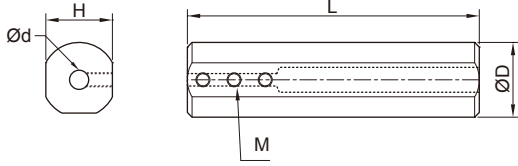


FIG-4

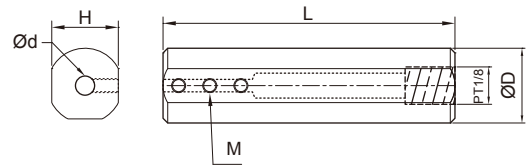


FIG-2

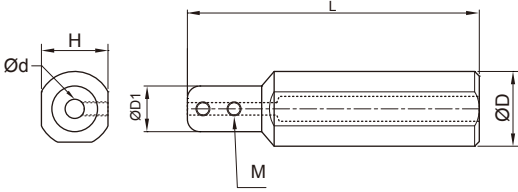


FIG-5

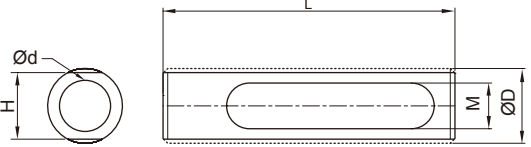


FIG-3

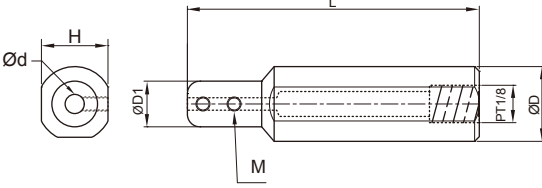
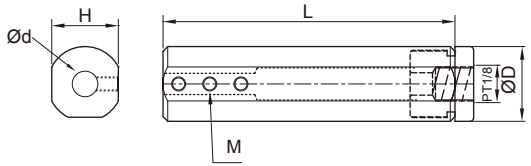


FIG-6



Item code	SHAPE	Coolant	Dimensions, mm					Weight (kg)	
			d	D	L	H	M		
NEW SHB-1602	FIG-1	--	2	16	100	14	M4	0.13	
SHB-1603	FIG-1	--	3					0.12	
SHB-1604	FIG-1	--	4					0.12	
SHB-1605	FIG-1	--	5					0.12	
SHB-1606	FIG-1	--	6				M5	0.11	
SHB-1607	FIG-1	--	7					0.11	
SHB-1608	FIG-1	--	8					0.10	
NEW SHB-1610	FIG-1	--	10	0.09					
SHB-2002A	FIG-2	--	2	20	100	18	M3	0.20	
SHB-2003A	FIG-2	--	3					M4	0.19
SHB-2004A	FIG-2	--	4				0.19		
SHB-2005	FIG-1	--	5				M5	0.21	
SHB-2006	FIG-1	--	6					0.21	
SHB-2007	FIG-1	--	7					0.21	
SHB-2008	FIG-1	--	8					0.21	
SHB-2010	FIG-1	--	10	0.16					
NEW SHB-2203A	FIG-2	--	3	22	100	20	M4	0.24	
NEW SHB-2204A	FIG-2	--	4					0.24	
NEW SHB-2205	FIG-1	--	5					M5	0.27
NEW SHB-2206	FIG-1	--	6				0.26		
NEW SHB-2207	FIG-1	--	7				0.25		
NEW SHB-2208	FIG-1	--	8				0.24		
NEW SHB-2210	FIG-1	--	10				0.22		
NEW SHB-2212	FIG-1	--	12	0.20					
NEW SHB-2214	FIG-5	--	14	21	11	0.20			
NEW SHB-2216	FIG-5	--	16				22	0.13	
NEW SHB-2203A PT02	FIG-3	•	3	22	110	20	M4	0.24	
NEW SHB-2204A PT02	FIG-3	•	4					0.24	
NEW SHB-2205 PT02	FIG-4	•	5					M5	0.27
NEW SHB-2206 PT02	FIG-4	•	6						0.28
NEW SHB-2207 PT02	FIG-4	•	7						0.27
NEW SHB-2208 PT02	FIG-6	•	8						0.21
NEW SHB-2210 PT02	FIG-6	•	10				0.21		
NEW SHB-2212 PT02	FIG-6	•	12				0.20		

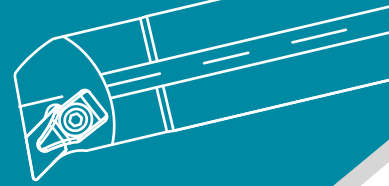


FIG-1

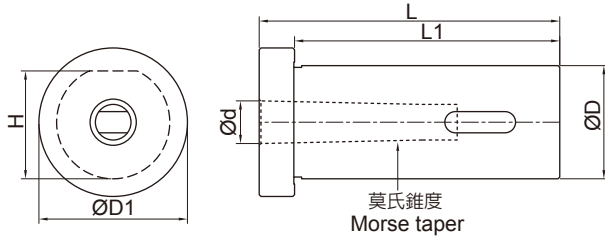


FIG-2

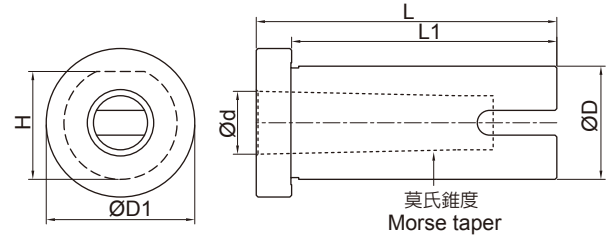
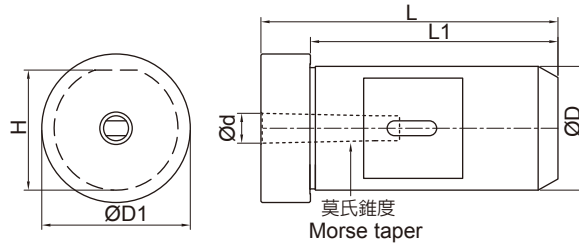



FIG-3



Item code	SHAPE	Coolant 	Dimensions, mm							Weight (kg)
			d	D	L	L1	D1	H	M	
NEW NC25-MTA1	FIG-2	--	MTA1	25	75	60	34	24	--	0.28
NEW NC25-MTA2	FIG-2	--	MTA2	25	75	60	34	24	--	0.23
NEW NC25-MTA3	FIG-2	--	MTA3	25	90	60	34	24	--	0.21
NEW NC32-MTA1	FIG-1	--	MTA1	32	85	75	42	31.5	--	0.53
NEW NC32-MTA2	FIG-2	--	MTA2	32	85	75	42	31.5	--	0.45
NEW NC32-MTA3	FIG-2	--	MTA3	32	100	75	42	31.5	--	0.45
NEW NC40-MTA1	FIG-1	--	MTA1	40	87	82	50	38	--	0.82
NEW NC40-MTA2	FIG-2	--	MTA2	40	87	85	50	38	--	0.75
NEW NC40-MTA3	FIG-2	--	MTA3	40	87	85	50	38	--	0.64
NEW NC40-MTA4	FIG-2	--	MTA4	40	116	86	50	38	--	0.72
NEW NC50-MTA1	FIG-3	--	MTA1	50	120	100	58	48	--	1.76
NC50-MTA2	FIG-1	--	MTA2	50	120	100	58	48	--	1.83
NC50-MTA3	FIG-1	--	MTA3	50	120	100	58	48	--	1.66
NC50-MTA4	FIG-2	--	MTA4	50	120	100	58	48	--	1.39
NC50-MTA5	FIG-2	--	MTA5	50	146	126	58	48	--	0.94

※目錄中規格和工具尺寸如有變更，依實際出貨為主，本公司保有異動權利。

Please note that products are continuously updated. Product changes subject to future amendments.

Please contact us regarding the tools not mentioned in the catalog.

內徑車刀
BORING BARS

外徑車刀
TOOLHOLDERS

牙刀 & 開槽刀
THREADING & GROOVING

銑刀
MILLING

孔加工
BORING TOOLS COMPONENTS

配件
SPARE PARTS



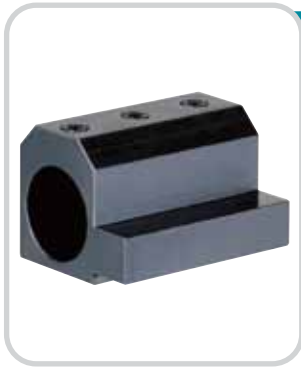
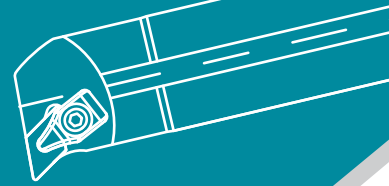
SHAN GIN

内径车刀辅助刀座

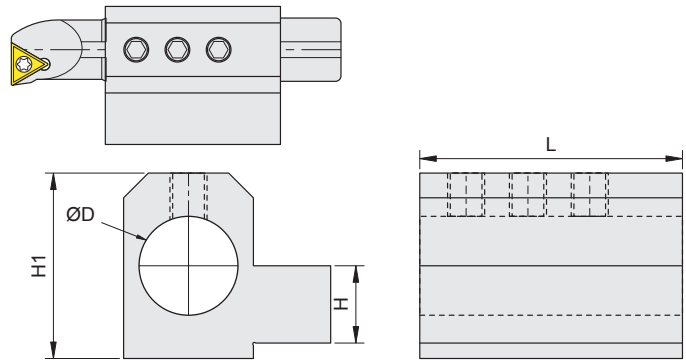
LATHE QUICK CENTER BLOCK





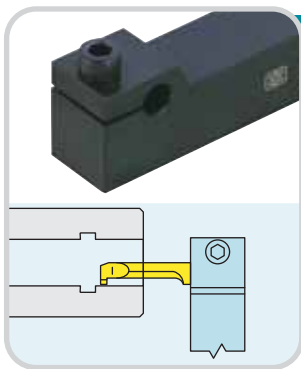
內徑車刀輔助刀座 LATHE QUICK CENTER BLOCK



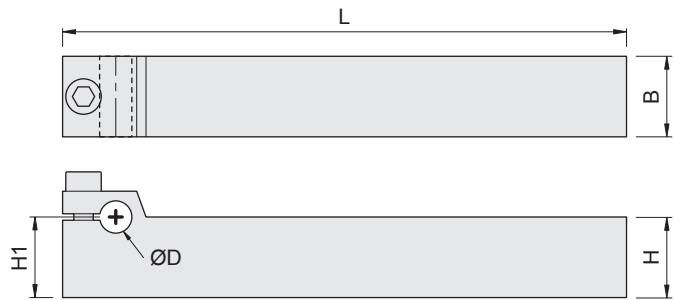
SBHA





Item code	Dimensions,mm				Screw 	Wrench 	Weight (kg)
	H	D	H1	L			
SBHA16-32	16	32	55	85	HM1216	PL60	1.43
SBHA20-32	20	32	55	85			1.46
SBHA20-40	20	40	60	90			1.67
SBHA25-32	25	32	60	85			1.78
SBHA25-40	25	40	65	90			2.08



CH



Right-hand shown

Item code	Dimensions,mm					Screw 	Wrench 	Weight (kg)
	D	H	B	L	H1			
CH-2020K-05	5	20	20	125	20	HTM625	PL50	0.46
CH-2020K-06	6							0.45
CH-2020K-08	8							0.45
CH-2020K-10	10							0.45
CH-2525M-05	5	25	25	150	25			0.84
CH-2525M-06	6							0.80
CH-2525M-08	8							0.80
CH-2525M-10	10							0.80

內徑車刀
BORING BARS

外徑車刀
TOOL HOLDERS

牙刀 & 開槽刀
THREADING & GROOVING

銑刀
MILLING

孔加工
BORING TOOLS COMPONENTS

配件
SPARE PARTS