

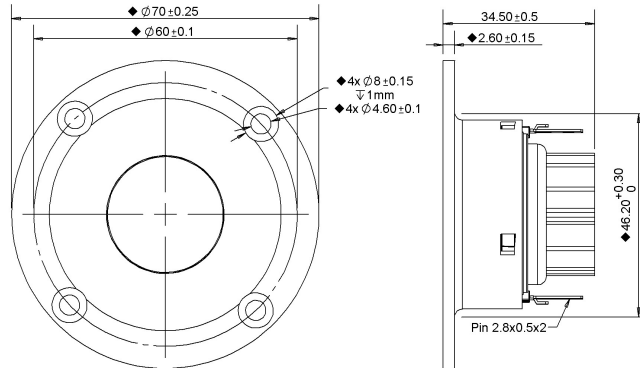
## Tweeter

The BC family of tweeters features a damped fabric dome for smooth frequency response performance and ferrofluid in the gap of the NdFeB magnet motor, providing enhanced cooling of the voice coil. BC tweeters come with a compact faceplate with recessed mounting holes, complete with sealing gasket which helps reduce vibration between baffle and driver.



BC25SC06-04

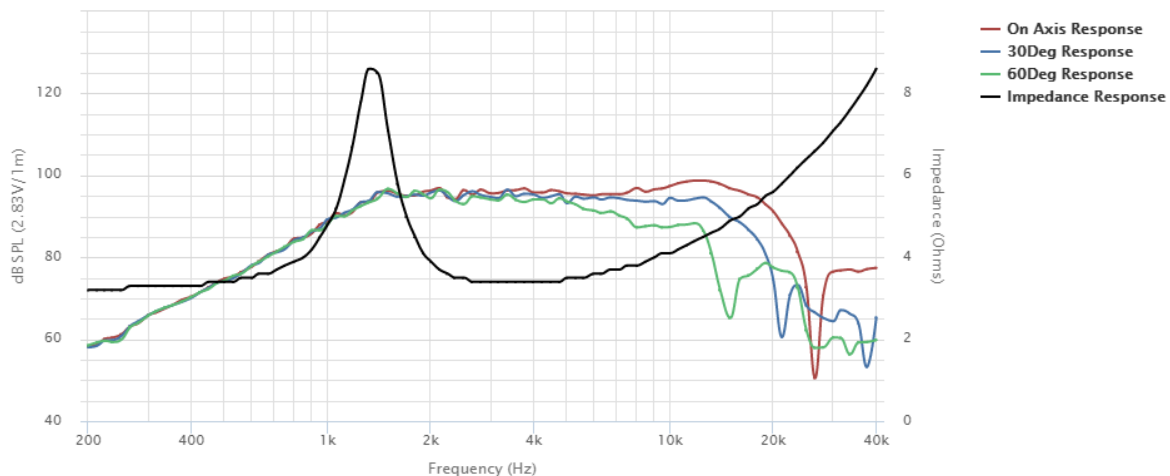
### MECHANICAL 2D DRAWING



### SPECIFICATIONS

DC Resistance	Revc	Ω	2.76	±5.0%	Moving Mass	Mms	g	0.3
Minimum Impedance	Zmin	Ω	3.37	±7.5%	Suspension Compliance	Cms	um/N	42.5
Voice Coil Inductance	Le	mH	0.02	-	Effective Cone Diameter	D	cm	2.5
Resonant Frequency	fs	Hz	1394.91	15%	Effective Piston Area	Sd	cm2	4.9
Mechanical Q Factor	Qms	-	3.45	-	Equivalent Volume	Vas	L	0
Electrical Q Factor	Qes	-	1.76	-	Motor Force Factor	BL	T•m	2.05
Total Q Factor	Qts	-	1.17	-	Motor Efficiency Factor	β	(T•m2)/Ω	1.5
Ratio	fs/Qts	-	1197.35	-	Voice Coil Former Material	VCfm	-	ASV
Half Space Sensitivity	dB@2.83V/1m	dB	96.17	±1.01	Voice Coil Inner Diameter	VCd	mm	25.4
Sensitivity	1W/1m	dB	92.4	±1.01	Gap Height	Gh	mm	2
Rated Noise Power (IEC 268-5 18.1)	P	W	25	-	Maximum Linear Excursion	Xmax	mm	0
Test Spectrum Bandwidth		12 dB/Oct	1300Hz - 20kHz	-	Ferrofluid Type	FF	-	APG027
Energy Bandwidth Product	EBP	(1/Qes)•fs	789.77	-	Transducer Size	-	-	25 mm
				-	Transducer Mass	-	Kg	0.08

### FREQUENCY & IMPEDANCE RESPONSE



Highcharts.com