

# Quick Installation Guide

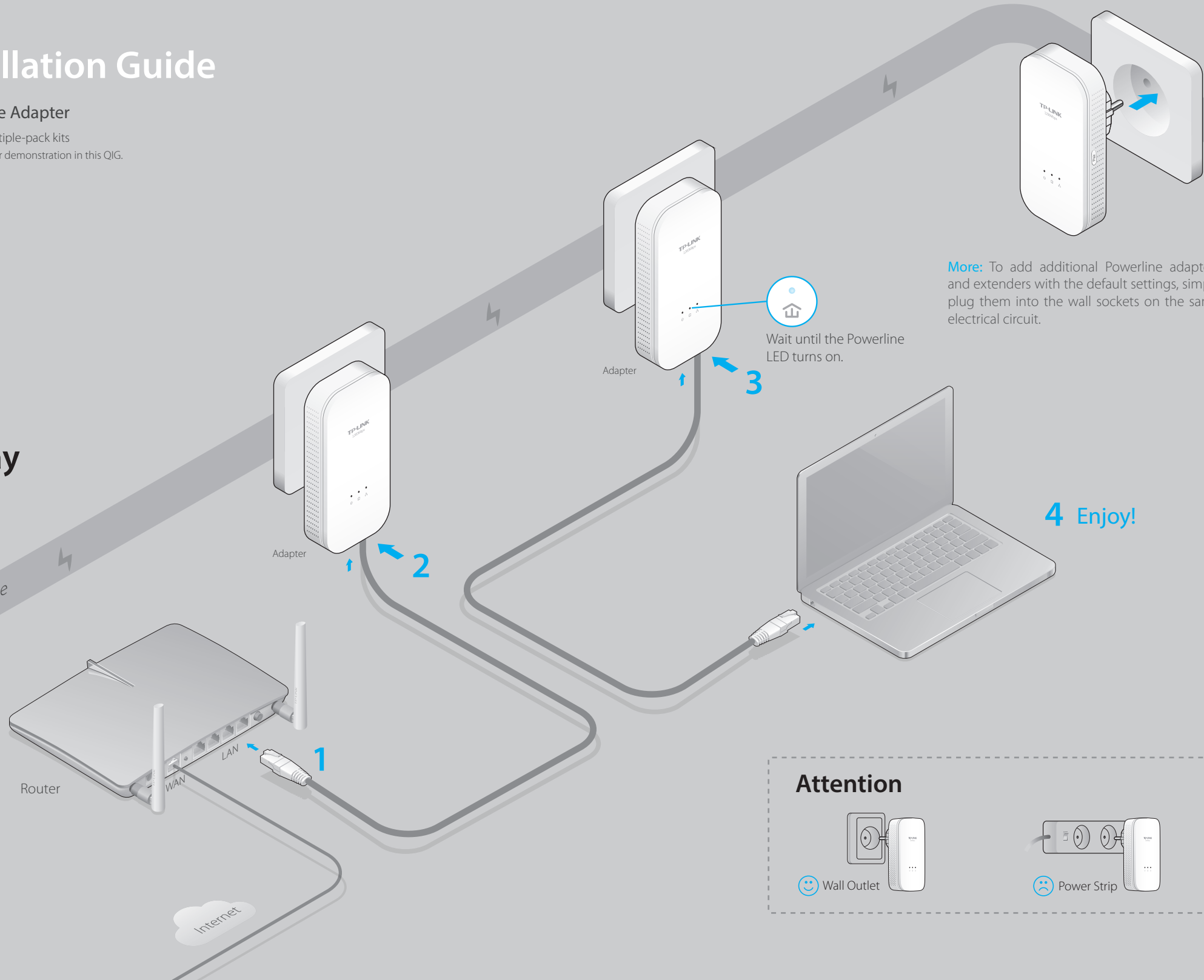
## AV1200 Gigabit Powerline Adapter

Applicable to TL-PA8010 and its multiple-pack kits

\*TL-PA8010 (European version) is used for demonstration in this QIG.  
Image may differ from actual product.

7106505962 REV1.0.1

## Plug and Play

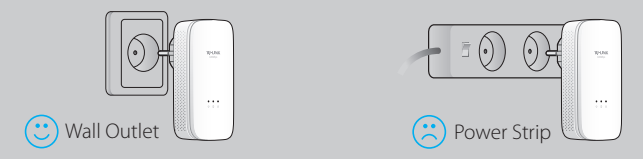


Wait until the Powerline LED turns on.

**More:** To add additional Powerline adapters and extenders with the default settings, simply plug them into the wall sockets on the same electrical circuit.

**4 Enjoy!**

### Attention



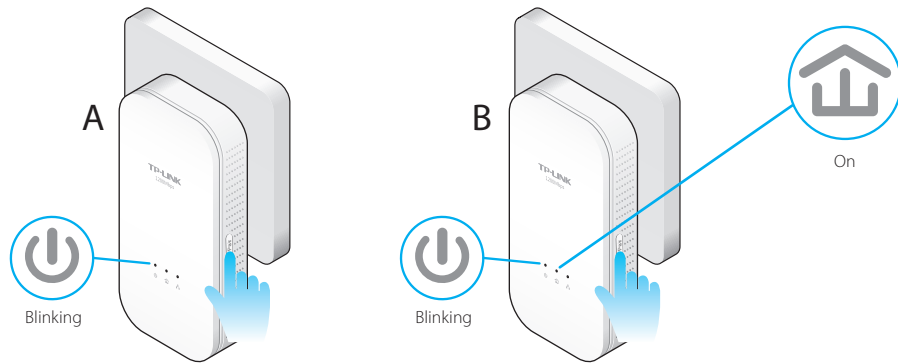
# Set Up a Secure Powerline Network by Pairing (Recommended)

You can create or join a secure powerline network using the Pair button on **two devices at a time**.

Tips: We recommend that you plug in the powerline devices near each other when pairing.

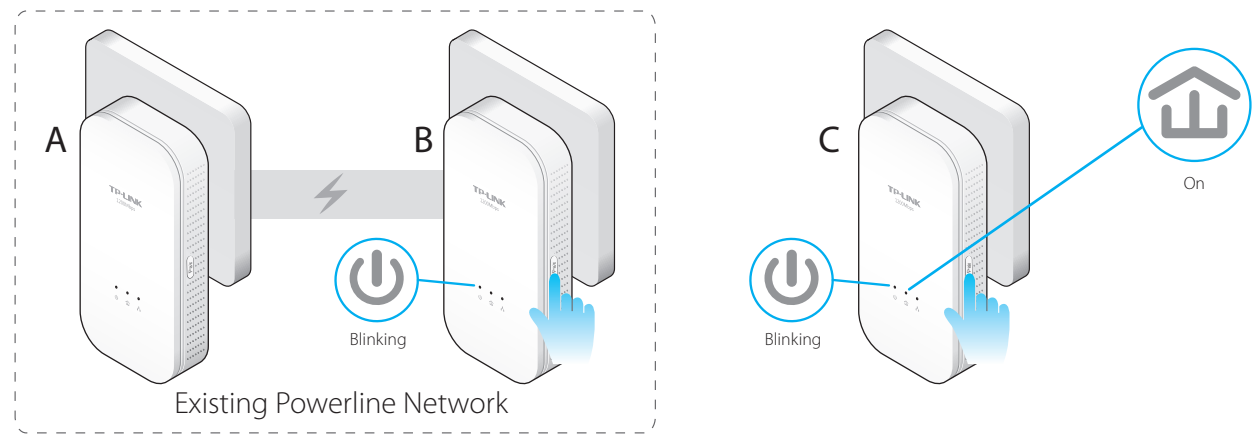
## To create a secure powerline network:

- 1 Press the **Pair** button for 1 second.
- 2 Within 2 minutes, press the **Pair** button for 1 second.
- 3 Done.



## To join an existing secure powerline network:

- 1 Press the **Pair** button for 1 second on any powerline device in the existing powerline network.
- 2 Within 2 minutes, press the **Pair** button for 1 second.
- 3 Done.



## LED and Button Legend

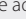
LED	STATUS	DESCRIPTION
Power	On/Off	The powerline adapter is on or off.
	Blinking	Once every second: Pairing is in process. Once every 15 seconds: Power-Saving Mode is on.*
Powerline	Yellow-green	Powerline network is in good condition.
	Red	Powerline network is in poor condition. We recommend trying another wall socket.
	Off	The powerline adapter is not connected to any powerline network or is in Power-Saving Mode.
Ethernet	On/Off	The Ethernet port is connected or not connected.

\* Five minutes after the device connected to the powerline adapter is turned off or inactive, the powerline adapter will automatically switch to Power-Saving Mode.

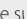
BUTTON	DESCRIPTION
Pair Button	Press and hold for 1 second to set up or join a secure powerline network.
	Press and hold for 8 seconds to leave an existing powerline network.
	Press and hold for more than 15 seconds to reset the powerline adapter.

## FAQ (Frequently Asked Questions)

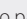
### Q1. How do I reset my powerline adapter?

A. With the powerline adapter plugged into to the electrical outlet, press and hold the Pair button for more than 15 seconds until the Power LED  goes off momentarily and comes back on.

### Q2. How to troubleshoot if there is no Internet connection in my powerline network?

- Make sure all powerline devices are on the same electrical circuit.
- Make sure the Powerline LEDs  light up on all of your powerline devices. If they do not, reset or pair all your powerline devices.
- Make sure all hardware connections are correctly and securely connected.
- Check if you have an Internet connection by connecting the computer directly to the modem or router.
- Make sure your computer's IP address is in the same segment as your router's.

### Q3. What can I do if a successfully-paired powerline device does not reconnect after it has been moved to a new location?

- Try another socket and make sure it is on the same electrical circuit.
- Try to pair it again, and make sure the Powerline LED  is on.
- Check for possible interference, such as a washer, air conditioner or other household appliance that may be too close to one of the powerline devices.



For more information, please visit our website:  
<http://www.tp-link.com>

More advanced configurations, such as firmware upgrade and QoS configuration, can be accessed through the tpPLC Utility (for Windows only). You can download and install the tpPLC Utility from the TP-LINK official website.