



Battery Powered HD Video Doorbell

User Manual

SKU: DE-WTL-WF03

**FOR PUBLIC
RELEASE**



**FOR PUBLIC
RELEASE**

2. Preparation before Installation

Check packing content

FOR PUBLIC RELEASE



gateway



door camera



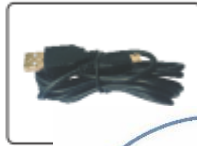
user manual



network cable



power adapter for gateway



cable for door camera



cable for door camera



mounting screw

3. Operation



※Scan QR code to c



IOS



Android

Account Registration

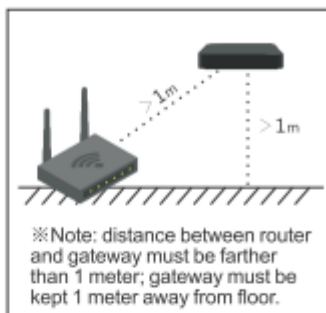
Input your email address and set up a password. Click "Verify"; a verification code will be sent to the email you input (If you do not find the email in your inbox, please check your spam filter). Enter the code to complete registration.

FOR PUBLIC RELEASE



1. Add Device on APP

1. Connect gateway with router via network cable; then connect it with power via adapter and cable.
2. Ensure network (WiFi or mobile data) is available on phone.
3. Open APP and click "add device" (see Picture 1).
4. Click "pair via QR code"(view image 2).
5. Scan QR code on gateway (see photo 4) to auto recognize and add device (see picture 5). Or enter device ID number and password (default: 888888) to add device (Image 3).
6. device is added then back to main interface. (Pic 6)



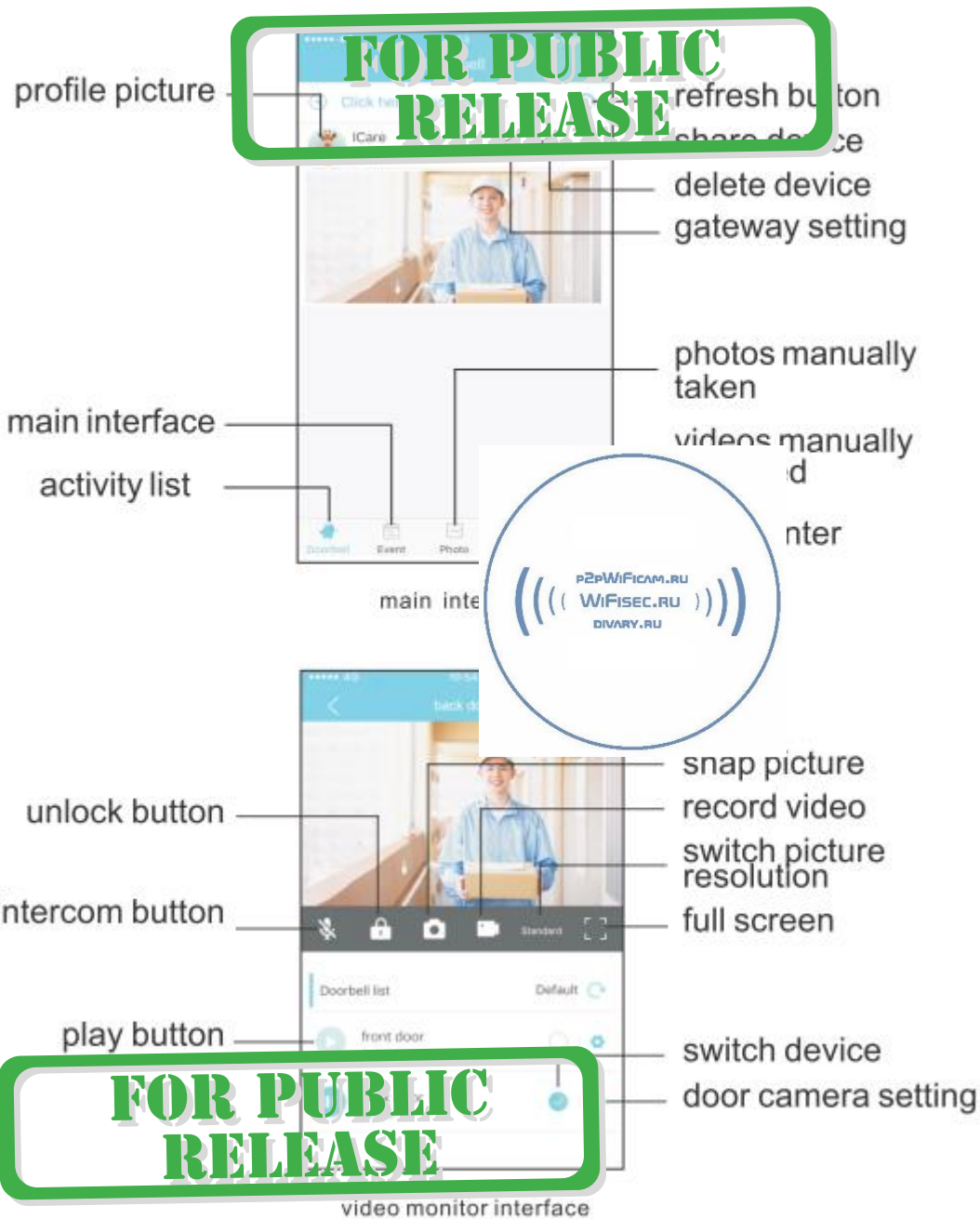
FOR PUBLIC RELEASE



3



2. APP Interface Introduction

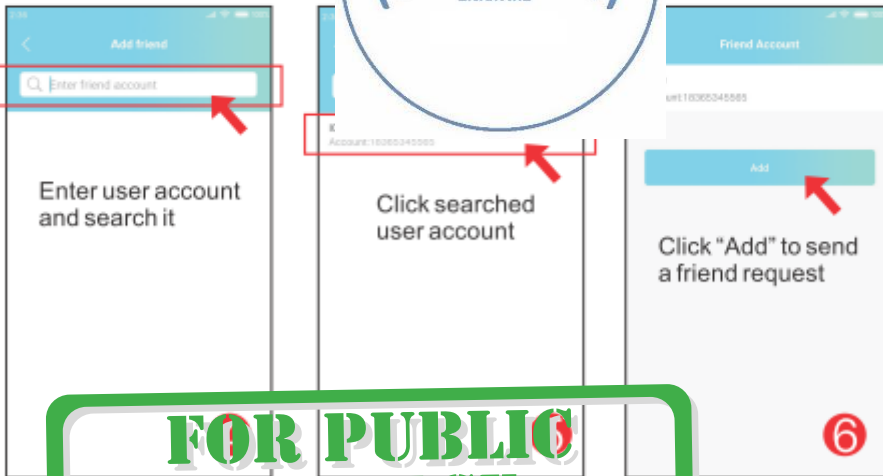
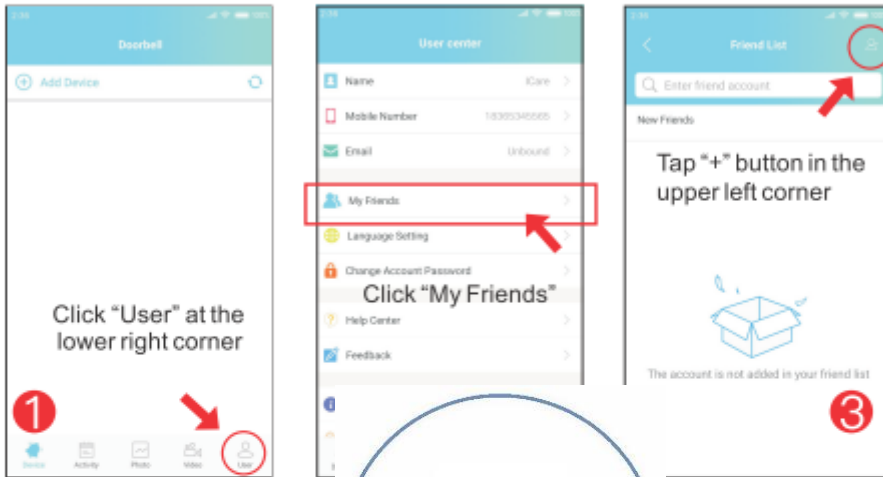


3. Share Device to More Users

A gateway is allowed to be added on only one account, which is called admin account. If other users want to use this device, they should be added as friends. To share this device, you need to add friend and share device.

FOR PUBLIC RELEASE

(1). How to Send Friend Request



FOR PUBLIC RELEASE



(2). How to Accept Friend Request



(3). Share Device from Admin Account to Common Account (both must be listed friends)





**FOR PUBLIC
RELEASE**

Acebell

Smart Home Starts from *Acebell*



IOS



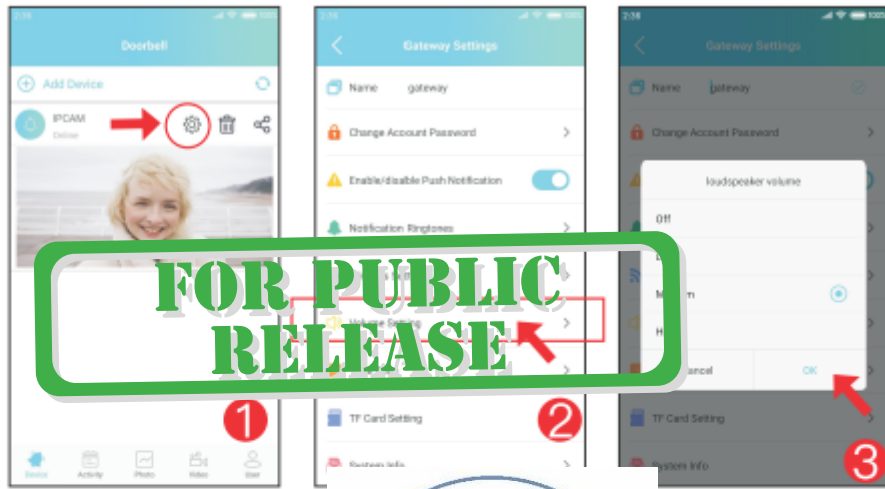
Android

Scan QR code to download APP

**FOR PUBLIC
RELEASE**



4. Gateway Speaker Volume Setting

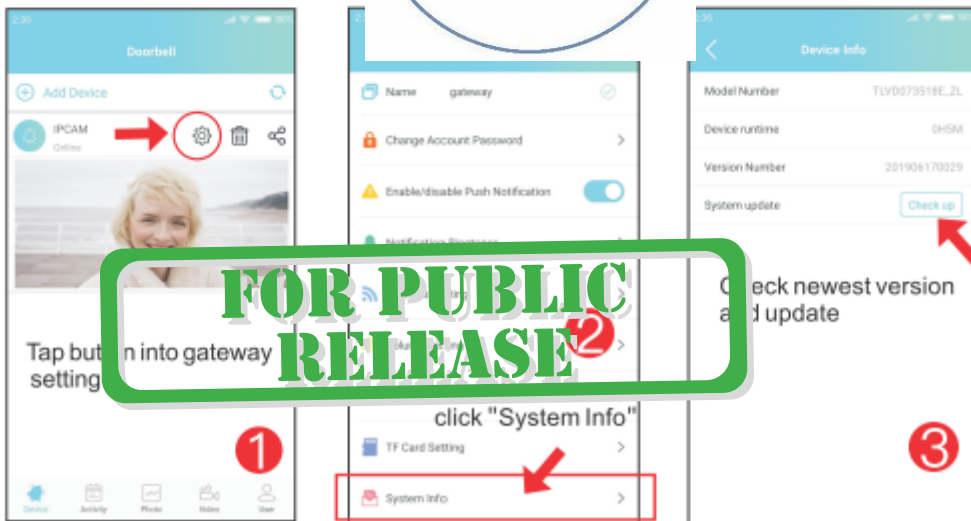


Tap button into gateway setting

Just volume or turn it off, then click "OK"



5. System Update



Tap button into gateway setting

Check newest version and update

7



4. Function

Video Intercom

After each visitor make notification on your mobile phone if you answer the call. If you don't answer, they can't speak to you. If you answer them at your door any time, visitor picture will be shown on gateway. If call is not answered, visitor can leave a message.



in instant
itor on phone
d speak to
at the same
on gateway.
sitor can

Unlock via APP (An e... is a must)

In intercom or live view video state, press "unlock" button on APP and enter unlock password (default password: 0000) to release door.

Remote Monitoring

You can monitor your front door any time by starting the video from the APP.



Data Storage

A TF memory card (max support 32GB) can be inserted on gateway. Activity video, unlock and leave messages. These videos can be...



on detection,
this TF card.
s album or shared.

Other operations:

Gateway password, user name, and nickname, etc can be changed.

id nickname, etc

Motion Detection:

If someone moves within the camera view, an instant alert will be sent to your mobile phone. A video of the approaching person will be captured and saved. Please refer to the user manual for operation details.



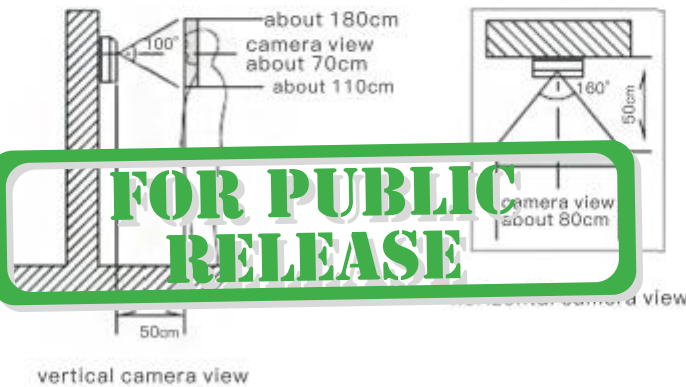


1. door camera setting

3. select sensitivity and click "OK"

5. Installation

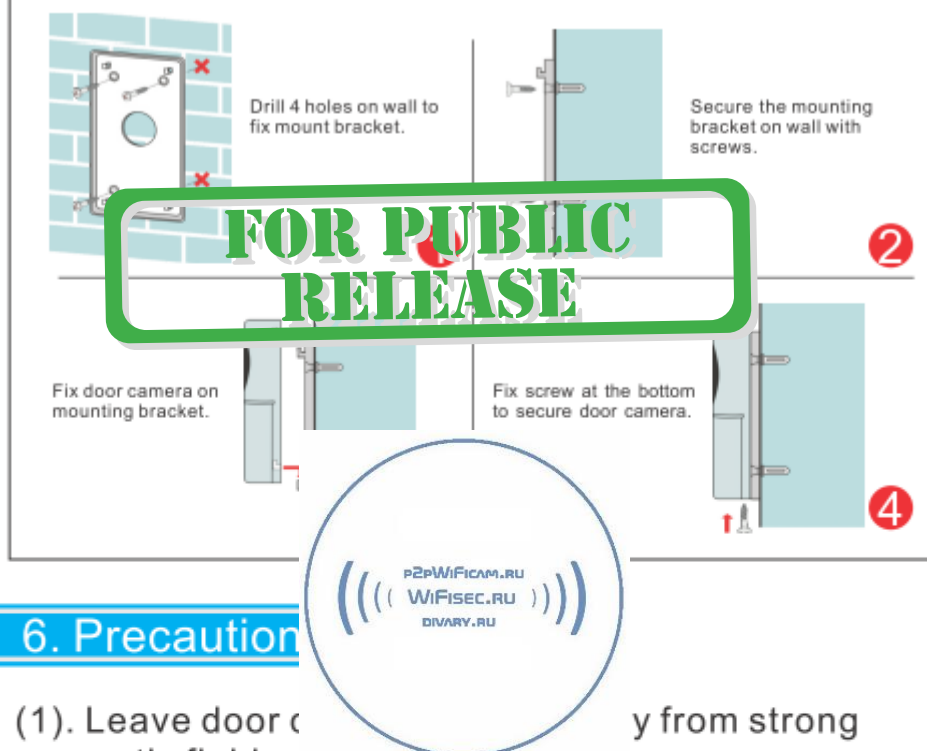
(1) Door camera position



※Note:
Avoid came
intensely illuminated
near to doordoorbell

rkness, if camera is
ig object, installing lamp
a imaging.

(2) Installation



6. Precaution

- (1). Leave door camera away from strong magnetic field.
 - (2). Do not spray water or other liquid to door camera and gateway.
 - (3). Do not heavily hit gateway and doorbell.
 - (4). Leave it from direct-sun exposure and strong reflected light.
 - (5). Do not install door camera near to place with ammonia or toxic gas.
 - (6). No disassembling this product because high voltage current inside.
 - (7). Do not wipe door camera and gateway with detergent or other chemicals.
 - (8). Do not disassemble this device in case of failure. Please repair it at your local maintenance locations or direct contact our after sale customer service.
- FOR PUBLIC RELEASE**



7. Troubleshooting

(1). No notification to phone after making a call.

(a). check whether gateway and door camera are paired well and whether APP is setup in online.

(b). Check whether notification permission to APP is allowed on mobile set.

FOR PUBLIC
RELEASE

(2). No sound in intercom state.

(a). Check whether mobile allows APP to access microphone and r

(b). Check whether speaker is blocked up.



8. Main Technical Data

Gateway



Power adapter	DC 5V
Power consumption	1.5W
Work temperature	-20~60°C
Size	10*10*1.7cm
Memory card	max support 32GB

Door Camera

**FOR PUBLIC
RELEASE**

Power adapter	DC 5V
Power consumption	Standby: 200µA; Work: 240mA
Camera view angle	Diagonal 170°
Night vision	IR lamp (distance: 5 meters)
Work temperature	-20~60°C
Each intercom duration	90 seconds
Size	12.9*6.4*3.2cm

**FOR PUBLIC
RELEASE**

