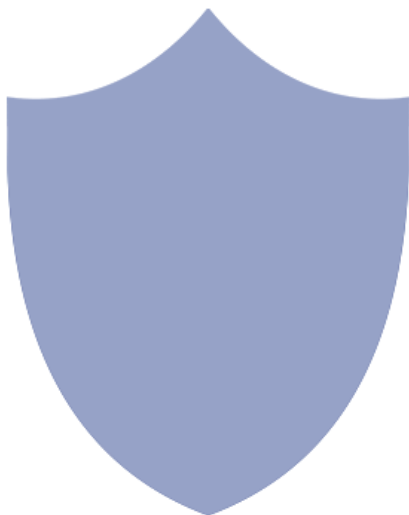


HD 1080P Wall Clock Security Wi-Fi Camera

User Manual

Version: Mar, 2017



Content

Quick Guide.....	P3
Overview.....	P4
Packing List.....	P4
Product structure (Big version).....	P5
Product structure (Small version).....	P6
Clock Part Setting.....	P7
Camera Part Setting.....	P7
Camera name and password setting.....	P11
APP Introduction.....	P12
PC Setting(LAN).....	P14
PC Setting(WAN).....	P16
Specification.....	P17
FAQ.....	P17






Quick guide of Wi-Fi camera function

1. Download Free App **Pro iCam** from App Store or Google Play.

2. Plug in power —> Turn on device's backside ON/OFF button, wait for 3 minutes (Back side red/blue blink slowly);

3. Enter smartphone setting —> Search and connect device's wifi named: CM....., wait till phone status bar appear Wi-Fi  symbol;

4. Enter APP, press top right “” icon —> Select camera —> Press Ok —> Camera Online then;

TIPS: 1. Please select **【Change】** to change device password for security **【default: 8888】** ;

2. This step = P2P mode, can check video locally when without Wi-Fi.

5. Press gear icon after camera —> Device Settings —> WiFi Config —> Select your Wi-Fi —> Input password —> Press Ok;

6. Quit APP, wait 30 seconds. Device will restart automatically and connect to your setted Wi-Fi (Back side red solid/blue blink slowly);

7. Enter APP to check live video locally or remotely anywhere.

P.S.: Contact local dealer for video guide setting up.

Overview

The HD 1080P Wall Clock Security Wi-Fi Camera is a brand new & fashion housing wall clock with an integrated smart & powerful 1080P Wi-Fi Camera.

First, it is a simple and common wall clock with direct time display;

Second, it can be easily connected to Wi-Fi and watch live video, or remotely take photo and video by APP in smartphone anywhere in the world; It also supports Point to Point (P2P) function, connected by APP to smartphone for local live video without Wi-Fi.

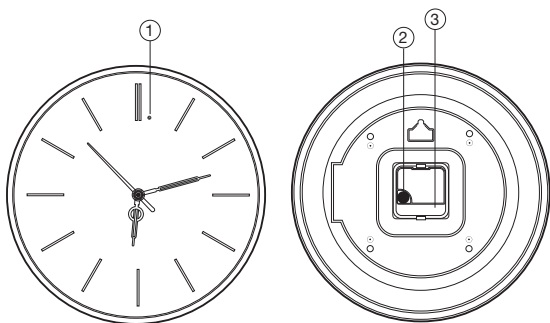
Third, the item also support motion detect alarm function, cycle recording and work when charging.

Usages: Nanny camera, Home/ Shop/ Office/ Warehouse surveillance camera.

In the box

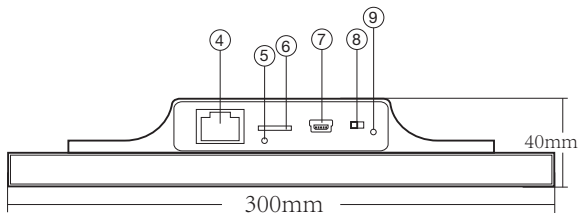
- 1x Wall clock Wi-Fi camera
- 1x USB cable
- 1x AC power adapter
- 1x CD driver
- 1x User manual
- 1x Hook rack

Product structure



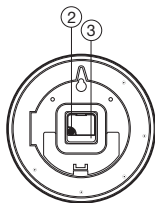
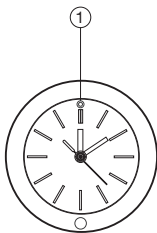
- ① Camera
- ③ Clock battery

- ② Time gear



- ④ RJ45 port
- ⑤ Reset
- ⑥ Micro SD card slot

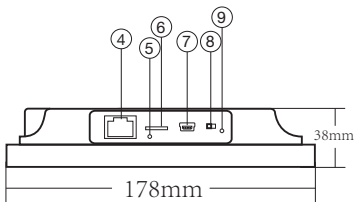
- ⑦ USB port
- ⑧ ON/OFF (For Wi-Fi Camera)
- ⑨ Indicator light



① Camera

② Time gear

③ Clock battery



④ RJ45 port

⑦ USB port

⑤ Reset

⑧ ON/OFF (For Wi-Fi Camera)

⑥ Micro SD card slot

⑨ Indicator light

Getting started of clock part

Insert a AA battery on the back of clock part.

Rotate the gear to adjust correct time.

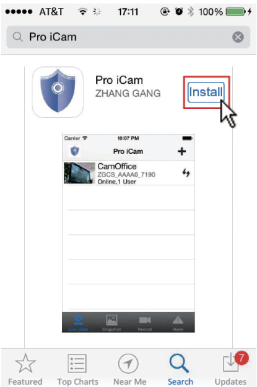
Getting started of Wi-Fi camera part

Step1: Download and install APP

Scan below QR code or search and download free APP named “**Pro iCam**” in Apple APP store, Google play or Electronic market, and install it.




[Pro iCam] APP QR code



Step2: Connect power and turn on device

Remove the protective seal from the battery and plug it into AC power using the included adapter; Turn on backside switch,and wait for 3 minutes (Back side red/blue blink slowly);

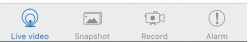
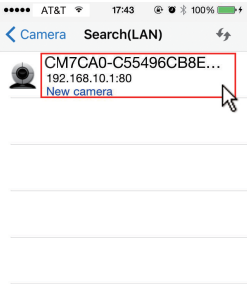
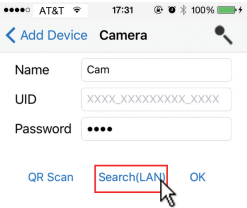
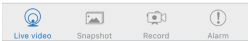
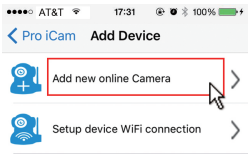
Step 3:Connect Wi-Fi

1. Open smartphone setting, search and connect mobile Wi-Fi to the device's wireless signal named “CM.....”, wait Wi-Fi connected, and phone status bar appear Wi-Fi  symbol.

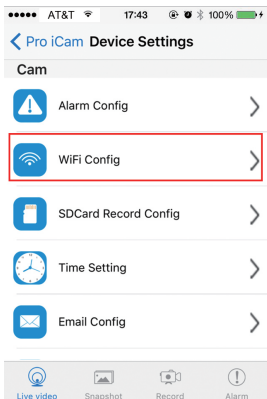
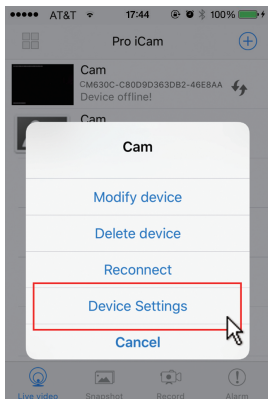


2. Open APP, press symbol + at the top right corner, select “Add new online camera”; Search for new camera and press ok. Then back to the first page to see the live video of camera and do the following setting.

- TIPS:** 1.Please select **【Change】** to change device password for security **【default: 8888】** ;
- 2.This step = P2P mode, can check video locally when without Wi-Fi.



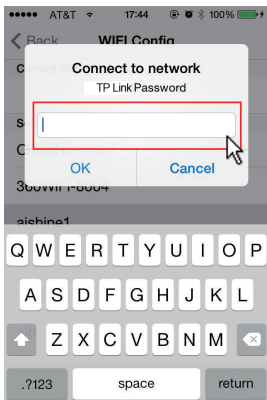
3. Press the gear icon  after the camera or long press the camera and select Device Settings, select Wi-Fi Config.




4. Select the router Wi-Fi and input passcode, camera will be connected to the router Wi-Fi. The smartphone will disconnect the signal from device and connect to the router Wi-Fi.

5. Quit APP, and device restart automatically and ready again in 30 seconds.

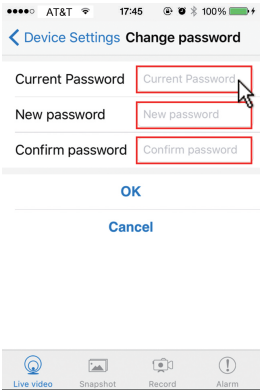
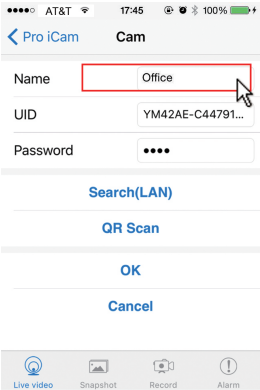
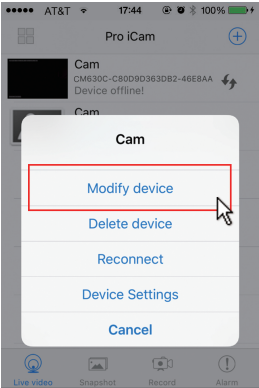
6. Enter APP and check live video locally or remotely anywhere. (Back side red solid/blue blink slowly).



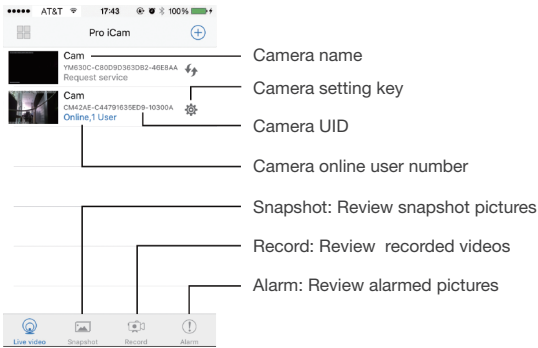
Set camera name and password

Set name: Press the  after the camera or long press the camera, select Modify device, select Name and revise name like Office, Room.....

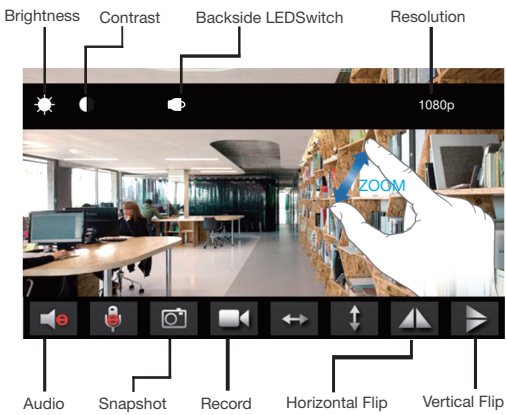
Set code: Long press the camera and select Device Settings, select Change password. Current one is 8888.



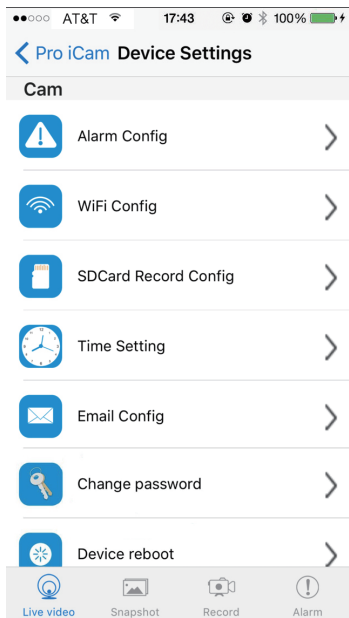
APP introduction



Live video page - Click camera to check



Pinch and expand to zoom in and out



Alarm Config

Alarm Config: Set motion detection sensitivity / Alarm interval

WiFi Config

Wi-Fi Config: Set camera to other Wi-Fi

SDCard Record Config

SD Card Record Config: Set SD card record mode / Resolution /File length ...

Time Setting

Set time

Email Config

Set motion alarm with email (Need turn on email alert first in alarm config)

Change password

Change password: Set camera new password

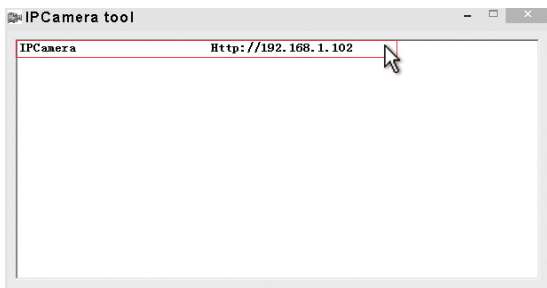
Device reboot

Device reboot: Restore to factory default setting

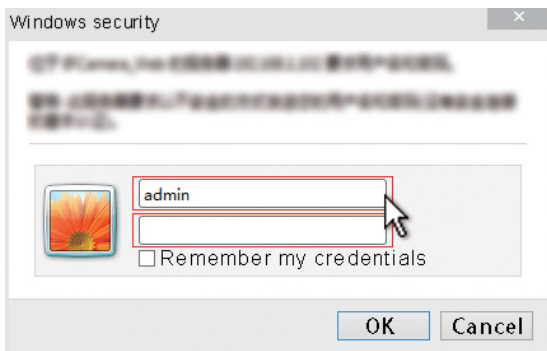
TIPS:Each setting in Device Settings, please scroll down and press ok to save the setting.


Set and watch by PC in LAN

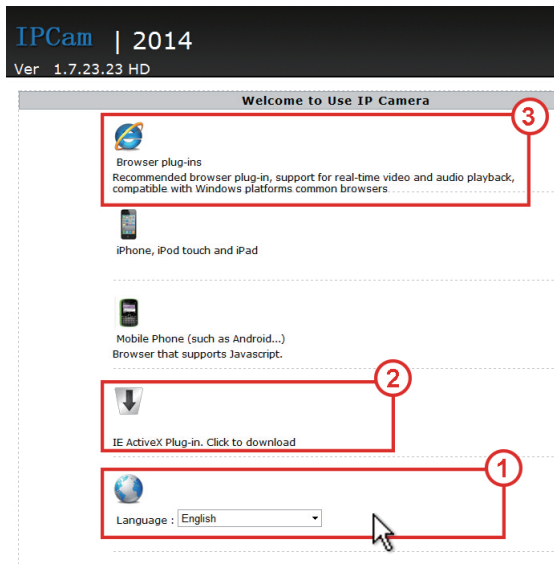
1. Once camera connected well with Wi-Fi, install software “IPCamera” from included CD and open software to find the connected device’s IP address.



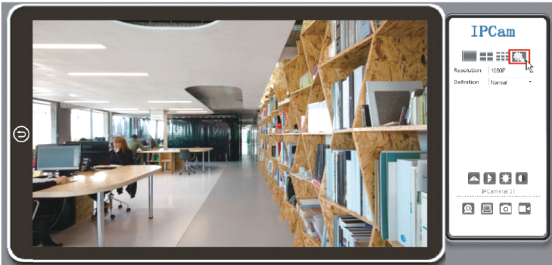
2. Double click the IP address, insert name “admin” (no password) and press ok.



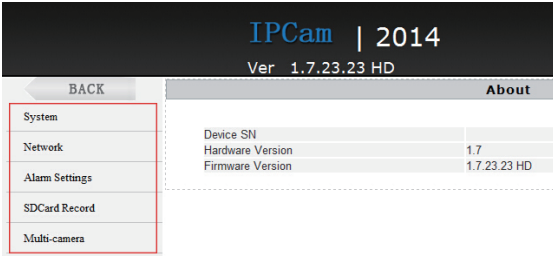
3. After above steps, you can insert setting interface. For first use, please choose language, then click  to download and install plug-in.



4. Click  to go to the final setting interface.



5. Click left options to set other needed functions.



6. Click left side System --> About, to check wifi camera's firmware version.

Set and watch by PC remotely (Not in LAN)

Please check details in included CD for instructions and software.

Specification

Resolution	2 Mega CMOS
Video pixel in phone&PC	Max 1920*1080
Frames	Max 25fps
Compressed format	H.264
View angle	90°
Type of memory card	TF card>=Class 4/10 and HC marked
Maximum capacity of memory card	128GB
PC operation system	Windows 7, 8 / Mac OS X
Play software	VLCPlayer/SMPlayer
Mobile phone operation system	Android/iOS
Web browser	IE7 and above,chrome,firefox
Power consumption	400MA/3.7V
Recording	1 minute/ around 20MB
Working time	5-6 hours
Charging time	7-9 hours
Power adapter	5V / 2A

FAQ

1. Q: Clock & Camera both use a same battery?
A: No, clock use AA battery, camera use built-in 3000mA rechargeable Li-battery;
2. Q: Can working when charging for long time use?
A: Yes, please use included 5V 2A adapter to plug in power for long time use.

3. Q: Can't get device Wi-Fi signal? (Four solutions FYI).

A: 1). Please confirm the power adaptor connected;
2). Press reset key for 5 seconds and wait 2 mins;
3). Turn off camera backside, then turn on again;
4). Turn off smartphone Wi-Fi for a while, then turn on to search again.

4. Q: Can't add or set camera after connected with camera Wi-Fi?

A: Please wait phone status bar appear Wi-Fi symbol, then to do follow settings.



5. Q: Why live video screen shows up black and a searching circle spins in center but nothing ever displays?

A: 1). If camera's connected Wi-Fi speed is slow, please wait 10-30 seconds for live video appear;
2). One click middle of screen, select top right 480p resolution to check.

TIPS: If local Wi-Fi speed is slow, please choose lower resolution for good video and audio.

6. Q: Live video not smooth and clear?

A: Select suitable resolution according to the real time network environment.

7. Q: How many cameras can be added to APP?

A: No limit.

8. Q: How many visitors support to check live video?

A: 1-2


9. Q: Only 1 user, but show 2 or more users?

A: 1). If login in very often, last record is still in. If check every 2-5 mins, surely will be the exact numbers of users;

2). To be safer , please change camera's password when first use (Page 11).

10. Q: Motion detect set and alarm?

A: 1). Set motion detect sensitivity in Device Settings - Alarm Config, and scroll down press OK;

2). When motion detected, camera will push a alarm message to your phone and take 3 pictures for checking in the APP [Page 12 - Alarm - ].

Alarm

11. Q: Micro SD card instruction?

A: 1). Format card before inserting;

2). When backside switch is on, every time you insert micro SD card, it will record automatically;

3). Once connected, can set SD management in app [Advance Config - SD Card Record Config].

12. Q: How to play micro SD card video?

A:1). Use a card reader to read and play;

2). Use APP to play back [Page 12 - Record - ];

3). Play back in good speed network.

13. Q: After connected to Wi-Fi, how is the status of camera when Wi-Fi off?

- A: 1). If modem off, camera can still check local view as it is connected directly to wireless router;
2). If both modem and router off, camera will keep searching the connected Wi-Fi and connect again;
3). If above point 2, not connect; Just turn off and on backside switch again to connect Wi-Fi.

14. Q: Camera can't hold set Wi-Fi, lost contact and offline?

- A: 1). Make sure camera inside the range of good Wi-Fi signal;
2). Low battery, check if power adapter connected properly for long time use.
3). Make sure your phone network(4G/Wi-Fi) work well in remote area when checking the camera;
4). Please try to add with another phone which with good network.

15. Q: Forget camera password, or item goes abnormal?

- A: Turn on camera and wait for 2 minutes, press reset key around 5 seconds till back side indicators off to restore factory default. Camera restarts and get ready again in 2 minutes.

16. Q: Connect camera with wifi by micro SD card setting?

- A: Steps: (Format micro SD card first.)
a, Create a txt file named wifi on the micro SD card

b, Input below format to the file

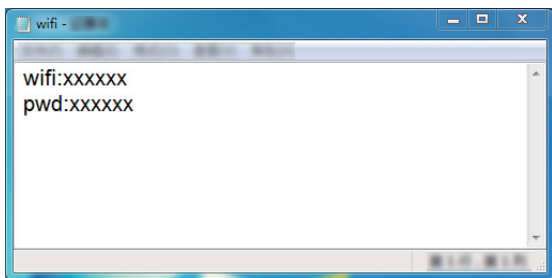
wifi:xxxxxx (Your local wifi name)

pwd:xxxxxx (Both are case-sensitive)

c, Insert the micro SD card when camera is OFF

d, Turn on camera, it will connect with your wifi
in 10-15 seconds.

TIPS: Can also copy the txt file from camera's CD to the micro SD card, change wifi name and password.



17. Q: App content similar but not exact same as in manual?

A: App is always being optimized with better interface and functions.

18. Q: Any operation video demo of the camera for setting up?

A: Please contact local dealer for video guide.

19. Q: Fast way connect camera to Internet?

A: Turn on camera, connect net cable to camera's RJ45 port, then you can search LAN for the camera easily soonest.

The End!

