

**CERTIFICATE OF ANALYSIS (COA)**  
**Basil Essential oil**

**Product Name:** Basil Essential oil

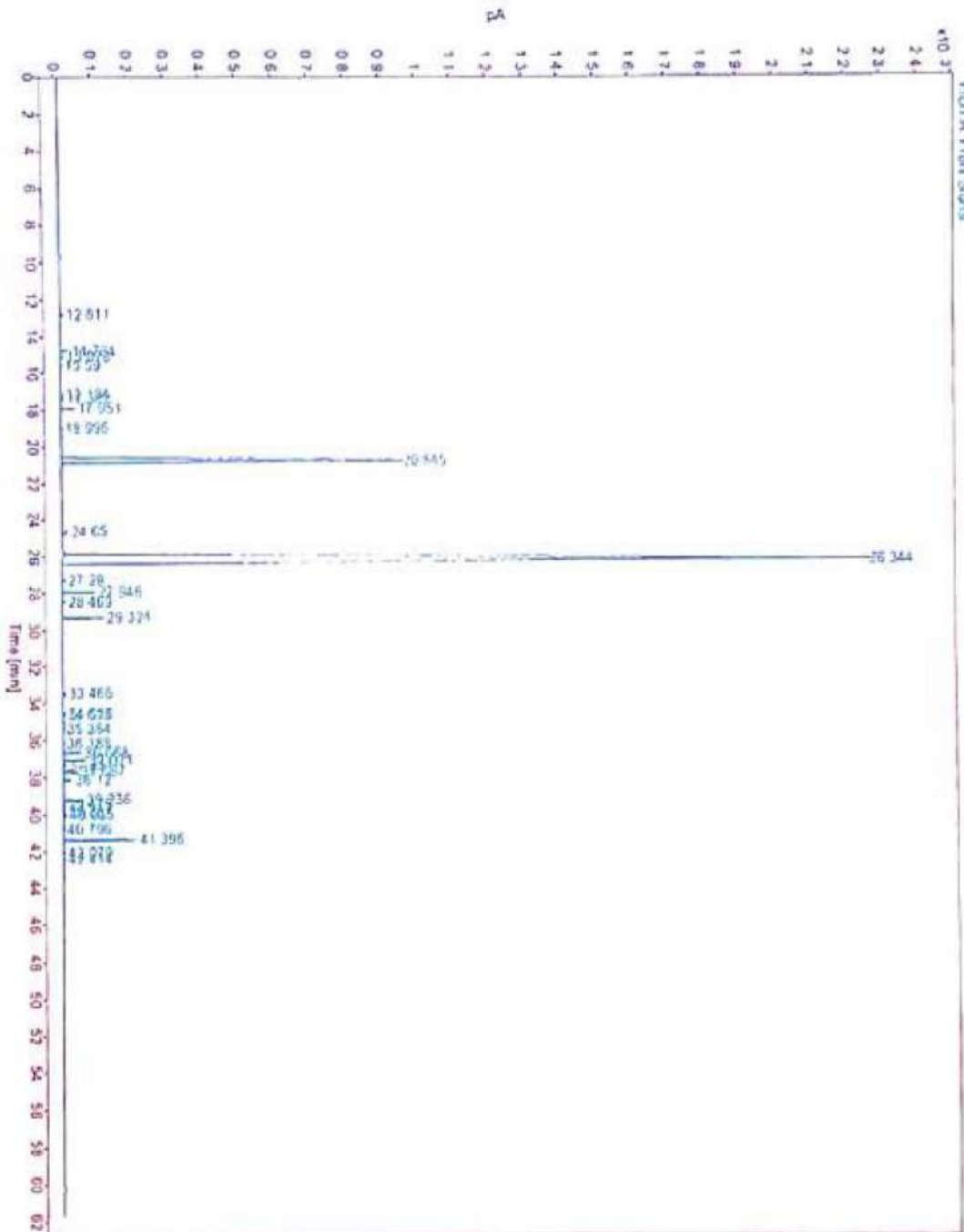
**Botanical Name:** *Ocimum basilicum* L.

**Extraction process:** hydro-distillation

PARAMETER	SPECIFICATION	RESULT
Appearance	Yellow to Pale Yellow colour Typical odour of Chavicol. Clear fluid liquid.	Complies
Specific Gravity At 25 °C	0.900 to 0.960 gms	0.940 gms
Refractive Index At 25 °C	1.490 to 1.530	1.506
Optical Rotation At 25 °C	-15° to 0°	-5.88°
<b>STABILITY &amp; STORAGE</b> -Keep In Tightly Closed In Container In A Cool & Dry Place, Protect From Light.		

# GC REPORT

Data file: C:\CHEM32\1\DATA\FEB2022\BASIL OIL.D  
Sample name: BASIL OIL  
Description:  
Sample amount: 0.000 Sample type: Sample  
Instrument: GC\_New1 Location: 103  
Injection date: 2/28/2022 12:45:53 PM Injection: 1 of 1  
Acq. method: TESTING M 1.M Injection volume: 0.200  
Analysis method: cooling M Acq. operator: SYSTEM  
Last changed: 1/6/2022 10:02:53 AM



# GC REPORT

Signal: FID1 A, Front Signal

RT [min]	Area	Height	Area%	Name
12.811	22.6620	7.1849	0.0487	
14.784	79.9953	22.9041	0.1719	
15.078	24.6683	7.2345	0.0530	
15.590	12.1740	3.4873	0.0262	
17.194	15.7974	3.9956	0.0340	
17.382	25.9415	6.8219	0.0558	
17.951	131.3514	35.8052	0.2823	
18.995	12.8740	3.0888	0.0277	
20.845	8238.4727	949.4244	17.7081	Linalool
24.650	93.8956	16.8226	0.2018	
25.344	24091.0938	2268.0322	74.9964	M.Chavicol
27.290	29.3252	8.2120	0.0630	
27.346	352.3702	92.2344	0.7574	
28.469	38.6221	6.9742	0.0830	
29.324	448.0854	114.5027	0.9631	
33.466	36.8915	8.4531	0.0793	
34.518	25.9523	6.7659	0.0558	
34.623	12.5918	3.0627	0.0271	
35.384	13.4213	3.6005	0.0288	
36.188	14.4052	3.3116	0.0310	
36.668	216.6518	51.6633	0.4557	
37.071	255.3808	62.7490	0.5489	
37.331	27.9199	7.0188	0.0500	
37.687	169.0925	42.5846	0.3635	
38.120	103.9928	24.3959	0.2235	
39.236	243.3783	56.3598	0.5231	
39.475	24.6962	5.9682	0.0531	
39.881	24.7017	5.4403	0.0531	
40.035	39.5763	10.1552	0.0851	
40.796	8.7427	2.3686	0.0188	
41.396	845.0640	203.6104	1.8164	
42.079	16.2426	4.0996	0.0349	
42.414	27.6887	4.7107	0.0595	
Sum	46523.7193			