

**CERTIFICATE OF ANALYSIS (COA)**  
**Myrtle Essential oil**

**Product Name:** Myrtle Essential oil

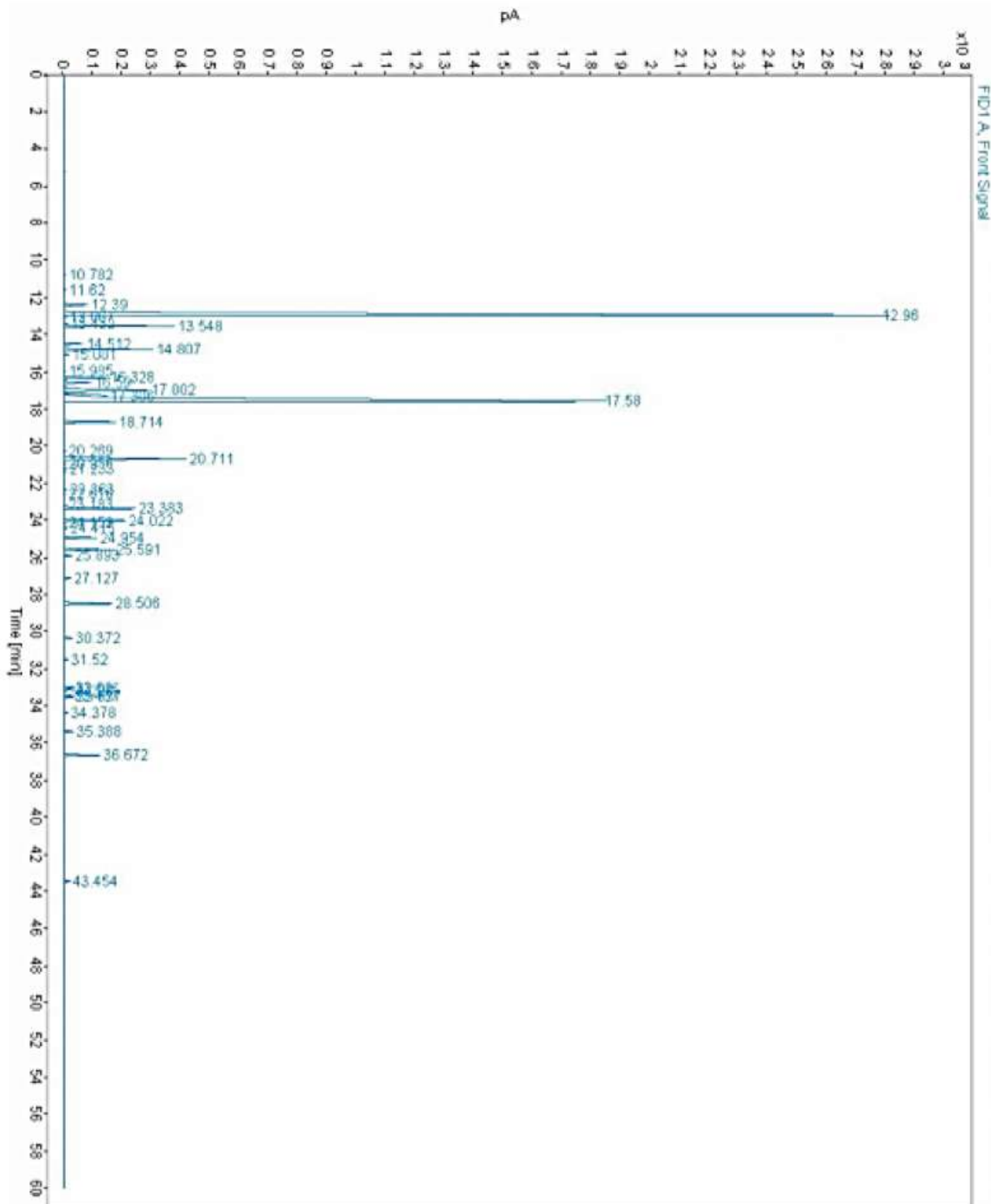
**Botanical Name:** *Myrtus communis* Linn.

**Extraction process:** hydro-distillation

<b>Physico-Chemical Properties</b>	<b>Specification</b>	<b>Results</b>
Specific Gravity at 20° C	0.870 to 0.910	0.889
Refractive Index at 20° C	1.4580 to 1.4900	1.465
Optical Rotation	+5 to +25	+11.64°
Solubility	1:1 volume Ethanol 80%	Complies

# GC REPORT

Data file: C:\CHEM32\1\DATA\MAR2022\MYRTLE OIL.D  
Sample name: MYRTLE OIL  
Description:  
Sample amount: 0.000 Sample type: Sample  
Instrument: GC\_New1 Location: 109  
Injection date: 3/1/2022 11:02:46 AM Injection: 1 of 1  
Acq. method: TESTING.M 1.M Injection volume: 0.200  
Analysis method: cooling.M Acq. operator: SYSTEM  
Last changed: 1/6/2022 10:02:53 AM



# GC REPORT

Signal: FID1 A, Front Signal

RT [min]	Area	Height	Area%	Name
10.782	8.0749	2.9803	0.0177	
11.620	19.1172	4.1345	0.0420	
12.390	444.9376	80.3946	0.9775	
12.960	17101.1797	2785.1853	37.5714	- Alpha Pinene
13.067	20.1769	6.2506	0.0443	
13.432	32.2089	10.5517	0.0708	
13.548	1167.9585	374.2794	2.5660	
14.512	205.2256	62.5327	0.4509	
14.807	1023.6818	302.1330	2.2490	
15.081	46.0014	13.8150	0.1011	
15.985	11.7871	2.9744	0.0259	
16.328	530.9229	144.3226	1.1664	
16.590	373.5356	91.4704	0.8207	
17.002	1825.9117	282.6656	4.0115	
17.306	920.5125	107.7422	2.0224	
17.580	13707.5107	1833.9894	30.1155	- 1,8 Cineole
18.714	619.5692	174.3435	1.3612	
20.269	18.6287	4.2019	0.0409	
20.711	2105.5635	413.6421	4.6259	- Linalool
20.956	13.3119	2.9575	0.0292	
21.233	16.2391	4.8252	0.0357	
22.363	20.2411	5.1677	0.0445	
22.616	11.5299	2.9536	0.0253	
23.183	12.5478	3.5516	0.0276	
23.383	990.8116	239.7472	2.1768	
24.022	842.0281	206.0803	1.8499	
24.153	9.8286	2.9432	0.0216	
24.415	28.6899	7.5278	0.0630	
24.954	430.0492	110.8097	0.9448	
25.591	683.6186	165.6492	1.5019	
25.893	92.4737	24.7799	0.2032	
27.127	78.9320	21.7649	0.1734	
28.506	809.4899	160.1124	1.7785	
30.372	111.6700	28.2814	0.2453	
31.520	43.1949	11.0018	0.0949	
33.020	110.1857	29.0166	0.2421	
33.115	95.2819	24.4050	0.2093	
33.228	14.1097	3.8281	0.0310	
33.467	71.3984	20.3674	0.1569	
33.537	116.6141	30.0552	0.2562	
34.378	41.4616	10.8391	0.0911	
35.388	109.2299	30.1388	0.2400	
36.672	505.7236	122.7725	1.1111	
43.454	75.3637	18.0551	0.1656	
Sum	45516.5292			