

A woman with dark hair, wearing teal medical scrubs, is sitting on a white surface. She is holding a stethoscope around her neck and looking towards the camera. The background is a soft, light blue gradient.

CHEROKEE
— MEDICAL —
UNIFORMS

SPRING 2021

SEASONAL PRODUCT GUIDE

Model on cover is wearing **2624A** Round Neck Top and **CK065A** Mid Rise Pull-on Pant in Blue Jay (BJYA).

Models on this page are wearing: *Left:* **CK732** V-Neck Top in Raining Cats and Frogs (RACF) and **CK010** Mid Rise Drawstring Pant in Navy (NAV), *Right:* **CK641** V-Neck Top in Geometry Lessons (GEOT) and **CK010** Mid Rise Drawstring Pant in Navy (NAV)

SEASONAL PRODUCT GUIDE

In this guide, you'll find all the new products from Cherokee Medical for the upcoming Spring season, ready to order right now. Our updated format focuses on product introductions. For comprehensive information on all existing products, visit CBICentral.com.



CONTENTS

What's New

WORKWEAR REVOLUTION	04	3 New Styles: Women's top, Maternity top and pant
WORKWEAR REVOLUTION TECH	06	1 New Style: Women's long sleeve top
WORKWEAR PROFESSIONALS	07	1 New Style: Women's v-neck top
INFINITY	08	5 New Styles: Women's tops and pant, Men's jacket 2 New Fashion Colors: Blue Jay and Lemon Sugar 7 New Prints
ALLURA	13	8 New Styles: Women's jacket, tops and pant, Men's jacket, top and pant.
FORM	16	1 New Core Color: Teal Blue 1 New Fashion Color: Pebble
PROJECT LAB	18	7 New Styles: Women's, Men's, Unisex and Kids'
IFLEX	20	2 New Men's Styles 6 New Prints
KATIE DUKE	23	3 New Styles: Women's jacket, top and pant
TOONIFORMS	24	20 New Disney Prints (including 5 Scrubs Hats) 13 New Non-Disney prints (including 3 Scrubs Hats)
GENUINE PRINTS	34	12 New Prints

In-Demand New Styles And Colors

The ever-popular Workwear Revolution category grows with a new v-neck top and maternity ensemble, while the Active collection expands with new colors. With the same soft hand and stretchy fabric that makes it a consistent favorite, Workwear Revolution now offers even more options for groups.



WOMEN'S STYLE

WW2875
V-Neck Knit Panel Top



XXS-5XL (24½")

Fabric
78 Poly/20 Rayon/2 Spandex Twill

- Product Details**
- Modern Classic fit
 - Kangaroo pocket
 - Front and back yoke seams
 - Black knit side panels (Navy knit side panels on Navy)

Available Colors

Black (BLK) Navy (NAV)
Pewter (PWT) Royal (ROY)

MATERNITY STYLES

WW688
Maternity Mock Wrap Top



XXS-3XL (27")

Fabric
78 Poly/20 Rayon/2 Spandex Twill

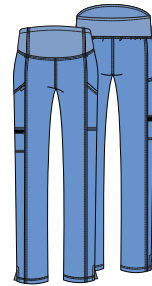
- Product Details**
- Maternity fit
 - Two patch pockets
 - Front shoulder yokes
 - Front and back princess seams
 - Soft knit front panels
 - Side zip gussets with mesh insets allow room to grow

Please order your pre-pregnancy size.

Available Colors

Black (BLK) Navy (NAV)
Pewter (PWT) Royal (ROY)

WW155/P/T
Maternity Pull-on Pant



XXS-3XL (30")
[P] XS-2XL (27½")
[T] S-XL (33")

Fabric
78 Poly/20 Rayon/2 Spandex Twill

- Product Details**
- Maternity fit
 - Soft knit waistband
 - Three pockets: two cargo pockets, zip pocket on right
 - Bungee loops at waist
 - Slim-straight leg, 15" opening
 - Side vents

Please order your pre-pregnancy size.

Available Colors

Black (BLK) Navy (NAV)
Pewter (PWT) Royal (ROY)

WOMEN'S ACTIVE STYLES

WW601
V-Neck Top



XXS-5XL (26")

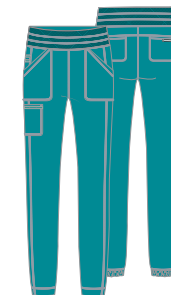
Fabric
78 Poly/20 Rayon/2 Spandex Twill

- Product Details**
- Modern Classic fit
 - Two patch pockets
 - Instrument loops in right pocket
 - Mesh neckband and panels
 - Front and back shoulder yokes
 - Front vents
 - Shirttail hem
 - Reflective label and tape

New Colors

Hunter (HUN) Red (RED)
Teal Blue (TLB)

WW011/P/T
Natural Rise Jogger



XXS-5XL (29")
[P] XXS-2XL (26½")
[T] XS-2XL (32")

Fabric
78 Poly/20 Rayon/2 Spandex Twill

- Product Details**
- Modern Classic fit
 - Mesh on elasticized waistband
 - Five pockets: two front patch pockets, cargo pocket, two back patch pockets
 - Instrument loops
 - Stylized hem
 - Reflective label and tape
 - Tapered leg, 11" opening

New Colors

Hunter (HUN) Red (RED)
Teal Blue (TLB)

MEN'S ACTIVE STYLES

WW603
Men's V-Neck Top



XS-5XL (28½")

Fabric
78 Poly/20 Rayon/2 Spandex Twill

- Product Details**
- Men's fit
 - Chest pocket, zip front pocket
 - Instrument loop above zip pocket
 - Mesh yokes and panels
 - Locker loop
 - Reflective label and tape

New Colors

Hunter (HUN) Teal Blue (TLB)

WW012/S/T
Natural Rise Jogger



XS-5XL (31")
[S] XS-3XL (28½")
[T] S-2XL (34")

Fabric
78 Poly/20 Rayon/2 Spandex Twill

- Product Details**
- Men's fit
 - Elastic waistband with drawstring
 - Five pockets: two front slash pockets, side seam zip pocket, two back pockets
 - Instrument and locker loops
 - Stylized hem
 - Reflective label and tape
 - Straight leg, 12" opening

New Colors

Hunter (HUN) Teal Blue (TLB)



Revolutionary Protection, Revolutionary Styling

Our popular scrubs fabric is enhanced with spill- and stain-resistant Certainty Protective Technology™ and now available in a new long sleeve top to provide even more protection without sacrificing comfort and fit.



ULTRA SOFT



CERTAINTY® TECHNOLOGIES



TWO-WAY STRETCH

For extra protection, Certainty® antimicrobial and fluid barrier fabric technologies have been added to all Revolution Tech garments. Visit [CertaintyTechnologies.com](https://www.CertaintyTechnologies.com) for details.

WOMEN'S STYLES

WW855AB Long Sleeve V-Neck Top



XXS-5XL (27")

Fabric

78 Poly/20 Rayon/2 Spandex Twill

Product Details

- Modern Classic fit
- Three pockets: double patch pockets on right, pen slot on left
- Knit cuffs
- Back princess seams
- Rounded hem
- Side vents

Available Colors

Black (BLK)

Navy (NAV)

Pewter (PWT)

Royal (ROY)



A Figure-Flattering New Addition

Reintroducing a favorite silhouette in soft stretch fabric paired with tonal knit side panels for an irresistible combination of shape, fit, and comfort. Pair it with WW Professionals pants for instant scrubs style.



DURABLE



TWO-WAY STRETCH



EASY CARE

WOMEN'S STYLES

WW2968 V-Neck Knit Panel Top



XXS-5XL (26")

Fabric

63 Poly/34 Cotton/3 Spandex Poplin

Product Details

- Modern Classic fit
- Two patch pockets with snap tabs
- Front and back yoke seams
- Tonal knit side panels

Available Colors

Black (BLK)

Navy (NAV)

Pewter (PWT)

Royal (ROY)

Style For Days

Spring blossoms with two new cheerful fashion colors, a new knit tee color combination, a sporty limited-edition top and pant, plus seven print tops. We're also introducing a new men's jacket, color additions to our popular joggers, and new Reorderable women's tops – including a protective long sleeve option.



**FOUR-WAY
STRETCH**



**CERTAINTY®
TECHNOLOGIES**



**MOISTURE
WICKING**

Fashion (available while supplies last)

For extra protection, Certainty® antimicrobial fabric technology has been added to all Infinity solid-color and colorblock garments. Infinity prints do not have Certainty technology at this time. Visit [CertaintyTechnologies.com](https://www.CertaintyTechnologies.com) for details.

LIMITED EDITION

CK895A V-Neck Top



XS-3XL (26½")

Fabric
95 Poly/5 Spandex Poplin

Product Details

- Contemporary fit
- Rib-knit collar
- Striped rib-knit band at neckline
- Three pockets: two patch pockets, zipper pocket on right
- Front and back princess seams
- Rib-knit back panel
- Rounded hem
- Side vents
- Contrast trim in Lemon Sugar (LNSU)

Available Color

Pewter (PWPS)

CK295A/P Mid Rise Jogger



XS-3XL (29")
[P] XS-2XL (26½")

Fabric
95 Poly/5 Spandex Poplin

Product Details

- Contemporary fit
- Rib-knit covered elastic waistband with interior drawstring
- Six pockets: two front patch pockets, cell phone pocket on right, zipper pocket on left, two back patch pockets
- Striped rib band at front pocket edge and hem inset
- Interior drawstring in Lemon Sugar (LNSU)
- Tapered leg, 9½" opening

Available Color

Pewter (PWPS)

WOMEN'S STYLES

2624A Round Neck Top



XS-3XL (26")

Fabric
95 Poly/5 Spandex Poplin

Product Details

- Contemporary fit
- Three pockets: two patch pockets, interior pocket
- Rib-knit inset at front neckband and back panel
- Shoulder yokes
- Bungee ID badge loop
- Side vents

New Colors

Blue Jay (BJYA) Lemon Sugar (LNSU)

CK687A V-Neck Top



XXS-3XL (26")

Fabric
95 Poly/5 Spandex Poplin

Product Details

- Contemporary fit
- Chest pocket
- Rib-knit inset at neckline
- Front and back shoulder yokes
- Front and back princess seams
- Rib-knit back panel
- Shirttail hem
- Side vents

Available Colors

Black (BAPS) Caribbean Blue (CAPS)
 Ciel (CIPS) Navy (NYPS)
 Pewter (PWPS) Royal (RYPS)
 Teal Blue (TLPS) Wine (WNPS)

CK781A Long Sleeve V-Neck Top



XXS-5XL (26")

Fabric
95 Poly/5 Spandex Poplin

Product Details

- Contemporary fit
- Three pockets: two patch pockets, cell phone pocket
- Rib-knit inset at neckline
- Front and back princess seams
- Shoulder yokes
- Bungee ID badge loop
- Rib-knit back panel and cuffs
- Side vents

Available Colors

Black (BAPS) Ciel (CIPS)
 Navy (NYPS) Pewter (PWPS)
 Royal (RYPS) Wine (WNPS)

CK765 Long Sleeve Underscrub Knit Tee



XS-2XL (25½")

Fabric
89 Poly/11 Spandex Stripe Jersey

Product Details

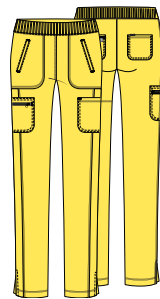
- Contemporary fit
- Three pockets: two hidden sleeve cuff pockets, zippered in-seam pocket
- Front and back princess seams
- Reflective piping at forearms
- Rounded high-low hemline

New Color

Blue Jay/Pewter (BJPW)

WOMEN'S STYLES

CK065A/P
Mid Rise Pull-on Pant



XS-3XL (30½")
[P] XS-2XL (28")

Fabric
95 Poly/5 Spandex Poplin

Product Details

- Contemporary fit
- Elastic-reinforced rib-knit waistband
- Six pockets: two front welt pockets, two cargo pockets, two back pockets
- Front leg seams
- Side vents
- Tapered leg, 14" opening

New Colors



CK110A/P
Mid Rise Jogger Pant



XXS-5XL (28")
[P] XXS-2XL (25½")

Fabric
95 Poly/5 Spandex Poplin

Product Details

- Contemporary fit
- Elastic-reinforced rib-knit waistband
- Five pockets: two front angled zipper pockets, cargo pocket with reflective tape, two back patch pockets
- Front leg seams
- Rib-knit cuffs
- Tapered leg, 12½" opening

New Colors



MEN'S STYLES

CK332A
Men's Zip Front Jacket



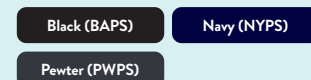
XS-5XL (29½")

Fabric
95 Poly/5 Spandex Poplin

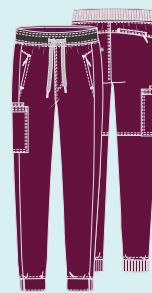
Product Details

- Men's fit
- Stand-up collar
- Three pockets: in-seam chest pocket, two angled front zip pockets
- Front and back yoke seams
- Rib-knit panels on the sides and inner sleeve panels

Available Colors



CK004A/S/T
Men's Jogger Pant



XS-5XL (31")
[S] XS-3XL (28½")
[T] S-2XL (34")

Fabric
95 Poly/5 Spandex Poplin

Product Details

- Men's fit
- Rib-knit covered waistband with drawstring
- Mock fly front closure
- Five pockets: two zip slash pockets, cargo pocket with cell phone pocket, hidden zip back pocket
- Rib-knit on back of cuffs at leg opening
- Tapered leg, 10½" opening

New Colors



* No Tall

PRINT STYLES

Sundown Stems (SUNO)



CK609
XS-3XL (26")

Fabric
94 Poly/6 Spandex Poplin

Contrast
Blue Jay (BJYA), Navy (NYPS)

Pockets
Patch Pockets, Interior Pocket

Coordinating Colors
Blue Jay (BJYA), Carmine Pink (CPPS), Navy (NYPS), White (WTPS)

Definitely Dots (DFDO)



CK654
XS-3XL (26")

Fabric
95 Poly/5 Spandex Poplin

Contrast
Blue Jay (BJYA), Black (BAPS)

Pockets
Patch Pockets, Interior Pockets

Coordinating Colors
Black (BAPS), Blue Jay (BJYA), White (WTPS)

Colorful Blooms (CLFU)



CK608
XXS-5XL (26")

Fabric
95 Poly/5 Spandex Poplin

Contrast
Black (BAPS)

Pockets
Set-in Pockets, Interior Pocket

Coordinating Colors
Black (BAPS), Blue Jay (BJYA), Carmine Pink (CPPS), Pewter (PWPS), White (WTPS)

Sporty Speckles (SKYS)



CK634
XS-3XL (26")

Fabric
94 Poly/6 Spandex Poplin

Contrast
Black (BAPS)

Pockets
Welt Pockets, Pen Slot

Coordinating Colors
Black (BAPS), Blue Jay (BJYA), Carmine Pink (CPPS), Pewter (PWPS), White (WTPS)

PRINT STYLES

Marvelous Marble (MVMA)



CK656
XXS-5XL (26")

Fabric
94 Poly/6 Spandex Poplin

Contrast
Grey (GRY)

Pockets
Patch Pockets, Interior Pockets

Coordinating Colors
Grey (GRY), Lemon Sugar (LNSU),
Pewter (PWPS), Turquoise (TRQ),
White (WTPS)

Daisies For Days (DYOS)



CK609
XS-3XL (26")

Fabric
94 Poly/6 Spandex Poplin

Contrast
Pewter (PWPS)

Pockets
Patch Pockets, Interior Pocket

Coordinating Colors
Black (BAPS), Lemon Sugar
(LNSU), Pewter (PWPS),
White (WTPS)

All Infinity prints featured are Fashion and available while supplies last.

MEN'S STYLE

Tri It Out (TRII)



CK920
XS-5XL (29½")

Fabric
94 Poly/6 Spandex Poplin

Pockets
Welt Pockets, Chest Pocket

Coordinating Colors
Black (BAPS), Pewter (PWPS),
White (WTPS)

NEW COLLECTION

A Brand-New
Collection With
Design-Right
Details

Introducing Allura, a new line available exclusively for independent brick-and-mortar retailers. Featuring a fun fashion color for Spring, Allura combines the best of style and function with lots of stretch and moisture wicking.



4-WAY STRETCH



MOISTURE WICKING

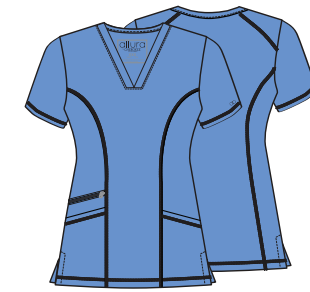


EASY CARE

Fashion (available while supplies last)

WOMEN'S STYLES

CKA684
V-Neck Top



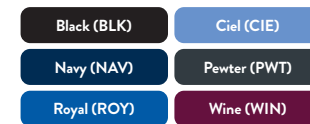
XXS-3XL (26")

Fabric
90 Poly/10 Spandex Poplin

Product Details

- Contemporary fit
- Three pockets: two front angled patch pockets, zip cell phone pocket on right
- Front and back princess seams
- Back shoulder yokes
- Side vents

Available Colors



CKA685
V-Neck Top



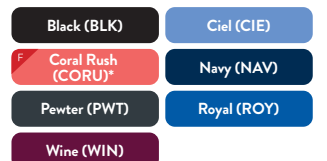
XXS-3XL (26")

Fabric
90 Poly/10 Spandex Poplin

Product Details

- Contemporary fit
- Three pockets: two front patch pockets, zip cell phone pocket on the right
- Front and back yoke seams
- Front side panels
- Bungee ID badge loop
- Shirrtail hem
- Side vents

Available Colors



* XS-3XL

NEW COLLECTION

Inspired By Healthcare Heroes

Project Lab by Cherokee Uniforms features seven new lab coats in Modern Classic, Men's, and Unisex fits with a Tall option available on five styles. The poly/cotton twill fabric features built-in stretch for a versatile combination of comfort and durability. All new lab coats include tablet pockets for tech-savvy patient care.



ULTRA SOFT



DURABLE



MECHANICAL STRETCH

WOMEN'S STYLES

CK451/T
Women's 28" Consultation Coat



XXS-5XL (28")
[T] XS-2XL (30")

Fabric
65 Poly/35 Cotton Built-in Stretch Twill

- Product Details**
- Modern Classic fit
 - Three pockets: chest pocket, two front tablet pockets
 - Back princess seams

Available Color

White (WHT)

CK452/T
Women's 33" Lab Coat



XXS-5XL (33")
[T] XS-2XL (35")

Fabric
65 Poly/35 Cotton Built-in Stretch Twill

- Product Details**
- Modern Classic fit
 - Three pockets: chest pocket with instrument loop, two front tablet pockets
 - Front and back princess seams
 - Back shoulder yokes
 - Locker loop

Available Color

White (WHT)

CK421
Women's 37" Lab Coat



XXS-5XL (37")

Fabric
65 Poly/35 Cotton Built-in Stretch Twill

- Product Details**
- Modern Classic fit
 - Three pockets: chest pocket, two front tablet pockets
 - Side access slits
 - Front and back yokes
 - Bungee ID badge loop
 - Back princess seams
 - Locker loop

Available Color

White (WHT)

MEN'S STYLES

CK401/T
Men's 30" Consultation Coat



XXS-5XL (30")
[T] XS-2XL (32")

Fabric
65 Poly/35 Cotton Built-in Stretch Twill

- Product Details**
- Men's fit
 - Three pockets: chest pocket, two front tablet pockets
 - Back yoke and center back seam

Available Color

White (WHT)

CK412/T
Men's 38" Lab Coat



XXS-5XL (38")
[T] XS-2XL (40")

Fabric
65 Poly/35 Cotton Built-in Stretch Twill

- Product Details**
- Men's fit
 - Three pockets: chest pocket, two front tablet pockets
 - Side access slits
 - Bungee ID badge loop
 - Locker loop
 - Back yoke
 - Back kick pleat

Available Color

White (WHT)

UNISEX STYLE

CK460/T
Unisex 38" Lab Coat



XXS-5XL (38")
[T] S-3XL (40")

Fabric
65 Poly/35 Cotton Built-in Stretch Twill

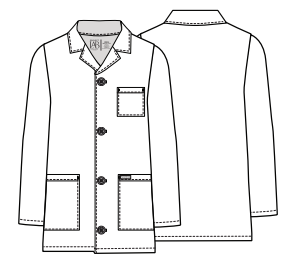
- Product Details**
- Unisex fit
 - Three pockets: chest pocket with bungee ID badge loop, two front tablet pockets
 - Side access slits
 - Back yokes and seams

Available Color

White (WHT)

KIDS' STYLE

CK430
Kids' Lab Coat



S-L (26")

Fabric
65 Poly/35 Cotton Built-in Stretch Twill

- Product Details**
- Unisex fit
 - Three pockets: chest pocket, two front pockets

Available Color

White (WHT)

New Prints In Flattering Silhouettes

In Spring's best new print designs, iflex pairs polyester/spandex crosshatch dobby with soft, knit panels for all-over stretch and ease to spare. Pair with coordinating iflex pants for all-day comfort and style.



4-WAY STRETCH



KNIT PANELS

PRINT STYLES

Flower Tech (FWTC)



CK641
XXS-5XL (25")

Fabric
93 Poly/7 Spandex Crosshatch

Contrast
Black (BLK)

Pockets
In-seam Pockets

Coordinating Colors
Black (BLK), Eggplant (EGG), Electric Pink (EPI), Hunter (HUN), Pewter (PWT), Red (RED), Royal (ROY), White (WHT)

Just Be-Leaf (JUSB)



CK732
XS-3XL (25½")

Fabric
93 Poly/7 Spandex Crosshatch

Contrast
Black (BLK)

Pockets
In-seam Pockets

Coordinating Colors
Black (BLK), Eggplant (EGG), Hunter (HUN), Pewter (PWT), White (WHT)

Butterfly Brilliance (BUYB)



CK636
XS-3XL (26")

Fabric
93 Poly/7 Spandex Crosshatch

Contrast
Pewter (PWT)

Pockets
Patch Pockets, Accessory Pocket, Back Patch Pocket

Coordinating Colors
Pewter (PWT), Shocking Pink (SHPW), White (WHT)

Waving Wildflowers (WAVW)



CK642
XS-3XL (26")

Fabric
93 Poly/7 Spandex Crosshatch

Contrast
Pewter (PWT)

Pockets
Patch Pockets

Coordinating Colors
Pewter (PWT), Shocking Pink (SHPW), White (WHT)

Raining Cats And Frogs (RACF)



CK732
XXS-5XL (25½")

Fabric
93 Poly/7 Spandex Crosshatch

Contrast
Navy (NAV)

Pockets
In-seam Pockets

Coordinating Colors
Black (BLK), Electric Pink (EPI), Navy (NAV), Turquoise (TRQ), White (WHT)

Geometry Lessons (GEOT)



CK641
XS-3XL (25")

Fabric
93 Poly/7 Spandex Crosshatch

Contrast
Navy (NAV)

Pockets
In-seam Pockets

Coordinating Colors
Ciel (CIE), Navy (NAV), Shocking Pink (SHPW), Turquoise (TRQ), White (WHT)

NEW MEN'S COLLECTION

iFlex For Men, A Winning Combination

Around-the-clock iflex comfort is now available in two new styles for men. Introducing a v-neck top and drawstring cargo pant, launching in four must-have core colors.



4-WAY STRETCH



MOISTURE WICKING



KNIT PANELS

MEN'S STYLES

CK661
Men's V-Neck Top



XS-5XL (29½")

Fabric
94 Poly/6 Spandex
Crosshatch Dobby

Product Details

- Men's fit
- Tonal knit neckband
- Four pockets: welt chest pocket with reflective piping, two front patch pockets, hidden cell phone pocket on right
- Front and back shoulder yokes
- Tonal knit back side panels

Available Colors



CK006/S/T
Men's Drawstring
Cargo Pant



XS-5XL (31½")
[S] XS-3XL (29")
[T] S-2XL (34½")

Fabric
94 Poly/6 Spandex
Crosshatch Dobby

Product Details

- Men's fit
- Knit waistband with interior logo elastic
- Seven pockets: two front pockets, two cargo pockets, hidden cell phone pocket, two zip back patch pockets
- Reflective piping along side seam
- Flat elastic inside hem for adjustability
- Tapered leg, 15" opening

Available Colors



Empowerment Expanded

New styles and colors give Katie Duke Collection fans more to love.



4-WAY STRETCH



MOISTURE WICKING



KNIT PANELS

WOMEN'S STYLES

CKK361
Zip Front Knit Jacket



XS-3XL (24½")

Fabric
92 Poly/8 Spandex
Brushed Jersey Knit

Product Details

- Contemporary fit
- Funnel collar
- Logo zipper pull
- Three pockets: angled front pockets, back zip pocket
- Stylized front seams
- Bungee ID badge loop at right shoulder
- Striped knit cuffs

Available Colors



CKK817
Shaped V-Neck Top



XS-3XL (25½")

Fabric
94 Poly/6 Spandex
Crosshatch Dobby

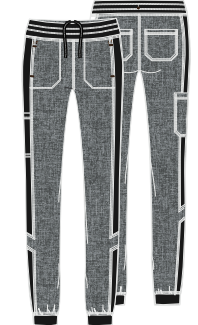
Product Details

- Contemporary fit
- Stylized neckline
- Three pockets: front patch pockets, back inset pocket
- Strapping along shoulders and sleeves
- Bungee ID badge loop at right shoulder
- Front and back side knit panels
- Shirttail hem and side vents

Available Colors



CKK071/P/T
Mid Rise Jogger



XS-3XL (29")
[P] XS-2XL (26½")
[T] XS-XL (32")

Fabric
94 Poly/6 Spandex
Crosshatch Dobby

Product Details

- Contemporary fit
- Pull-on waistband with encased elastic and interior drawstring
- Five pockets: in-seam front pockets, back patch pockets, cargo pocket
- Stylized side leg panels
- Knit cuffs
- Tapered leg, 9½" leg opening

Available Colors



Disney

Ha Ha (MKHH)



TF634
XXS-3XL (26")

Fabric
94 Poly/6 Spandex Poplin

Contrast
Black

Pockets
Patch Pockets

Coordinating Colors
Black, White

Love Happens (MKLH)



TF747
XXS-3XL (26")

Fabric
94 Poly/6 Spandex Poplin

Contrast
Black

Pockets
Welt Pockets

Coordinating Colors
Black, Pewter, White

I Love You (MKIO)



TF500L
OS

Fabric
95 Poly/5 Spandex Poplin

Contrast
Pewter Sweatband

Coordinating Colors
Black, Pewter, White

Glass Slipper (PRSS)



TF637
XXS-5XL (25½")

Fabric
95 Poly/5 Spandex Poplin

Contrast
Black

Pockets
In-seam Pockets

Coordinating Colors
Black, Ciel, Navy, Royal, White

Jasmine Nights (PRGH)



TF637
XXS-3XL (25½")

Fabric
95 Poly/5 Spandex Poplin

Contrast
Navy

Pockets
In-seam Pockets

Coordinating Colors
Black, Navy, White

Hercules (HRUL)



TF744
XXS-3XL (26")

Fabric
94 Poly/6 Spandex Poplin

Contrast
Navy

Pockets
Patch Pockets

Coordinating Colors
Black, Navy, White

Up (UPPP)



TF637
XXS-5XL (25½")

Fabric
95 Poly/5 Spandex Poplin

Contrast
Royal

Pockets
In-seam Pockets

Coordinating Colors
Black, Royal, White

My Name Is Francis (BFIF)



TF749
XXS-3XL (26")

Fabric
95 Poly/5 Spandex Poplin

Contrast
Black

Pockets
In-seam Pockets

Coordinating Colors
Black, Galaxy Blue, White

Disney

Born To Rule (LKUL)

Forest Frolic (BAAU)

Adopt Today (LHAT)



TF743
XXS-3XL (25½")

TF627
XXS-5XL (25½")

TF744
XXS-5XL (26")

TF502
OS

Fabric
95 Poly/5 Spandex Poplin

Contrast
Black, Teal Blue

Pockets
Kangaroo Pocket

Coordinating Colors
Black, Royal, Teal Blue, White

Fabric
95 Poly/5 Spandex Poplin

Contrast
Black

Pockets
In-seam Pockets

Coordinating Colors
Black, Ciel, Hunter, White

Fabric
94 Poly/6 Spandex Poplin

Contrast
Black

Pockets
Patch Pockets

Coordinating Colors
Black, Royal, White

Fabric
94 Poly/6 Spandex Poplin

Contrast
Pewter Sweatband

Coordinating Colors
Black, Royal, White

Fish Are Friends (FNAF)

Rumbly Tumbly (PHLY)



TF748
XXS-3XL (25½")

TF502
OS

TF699
XXS-5XL (26")

TF599
OS

Fabric
95 Poly/5 Spandex Poplin

Contrast
Navy, Yellow

Pockets
In-seam Pockets

Coordinating Colors
Black, Galaxy Blue, Navy, White

Fabric
95 Poly/5 Spandex Poplin

Contrast
Pewter Sweatband

Coordinating Colors
Black, Galaxy Blue, Navy, White

Fabric
94 Poly/6 Spandex Poplin

Contrast
Pewter

Pockets
Welt Pockets

Coordinating Colors
Black, Pewter, White

Fabric
94 Poly/6 Spandex Poplin

Contrast
Pewter Sweatband

Coordinating Colors
Black, Pewter, White

STAR WARS

NOTES

Vader 77 (SRVA)

My Only Hope (SRLY)



TF745
XXS-3XL (26")

TF606 Unisex
XXS-5XL (28")

TF502
OS

Fabric
94 Poly/6 Spandex Poplin

Contrast
Black, Red

Pockets
In-seam Pockets

Coordinating Colors
Black, Pewter, Red, White

Fabric
94 Poly/6 Spandex Poplin

Pockets
Patch Pockets

Coordinating Colors
Black, Pewter, Royal, Teal Blue, Turquoise, White

Fabric
94 Poly/6 Spandex Poplin

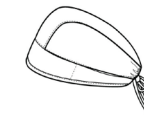
Contrast
Pewter Sweatband

Coordinating Colors
Black, Pewter, Royal, Teal Blue, Turquoise, White

All styles featured are Fashion and available while supplies last.

Gotham City™
(DMGC)

Bat-Signal™ (DMBS)



TF702 Men's
XS-2XL (29")

TF509
OS

Fabric
100 Cotton

Contrast
Navy

Pockets
Chest Pocket, Kangaroo Pocket

Coordinating Colors
Grey, Navy, Royal, White

Fabric
55 Cotton/42 Poly/3 Spandex Twill

Contrast
Pewter Sweatband

Coordinating Colors
Grey, Navy, Royal, White

Say Cookies (SWSL)



TF627
XXS-3XL (25½")

Fabric
95 Poly/5 Spandex Poplin

Contrast
Royal

Pockets
In-seam Pockets

Coordinating Colors
Black, Royal, White

MARVEL

Hulk 62 (MAIX)



TF702 Men's
XS-2XL (29")

Fabric
100 Cotton

Contrast
Black, Green

Pockets
Chest Pocket, Kangaroo Pocket

Coordinating Colors
Black, Pewter, White

Team Up (MAUP)



TF627
XXS-5XL (25½")

Fabric
95 Poly/5 Spandex Poplin

Contrast
Black

Pockets
In-seam Pockets

Coordinating Colors
Black, Red, Royal, White

Avengers Hero (MAGH)



TF718
XS-2XL (26")

Fabric
53 Cotton/43 Rayon/4 Spandex Jersey Knit

Features
Cuffs with thumbholes

Coordinating Colors
Black, Red, White

LOONEY TUNES

House Call (LTDO)



TF606 Unisex
XS-2XL (28")

Fabric
100 Cotton

Contrast
Black

Pockets
Patch Pockets

Coordinating Colors
Black, Pewter, Red, Shocking Pink, Turquoise, White

LOONEY TUNES and all related characters and elements © & ™ Warner Bros. Entertainment Inc. (s21)

All styles featured are Fashion and available while supplies last.

Spotting Trouble (SEOU)



TF614
XXS-2XL (26")

Fabric
94 Poly/6 Spandex Poplin

Contrast
Black

Pockets
Patch Pockets, Interior Pocket

Coordinating Colors
Black, Turquoise, White



TF502
OS

Fabric
94 Poly/6 Spandex Poplin

Contrast
Pewter Sweatband

Coordinating Colors
Black, Turquoise, White

Diamond Dance (TODD)



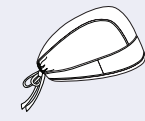
TF646
XXS-3XL (26")

Fabric
100 Cotton

Contrast
Black

Pockets
Patch Pockets, Interior Pocket, Pen Slot

Coordinating Colors
Black, Pewter, Shocking Pink, White



TF502
OS

Fabric
100 Cotton

Contrast
Pewter Sweatband

Coordinating Colors
Black, Pewter, Shocking Pink, White

ILLUMINATION PRESENTS
MINIONS
THE RISE OF GRU

Bello Minion (DPBO)



TF699
XXS-3XL (26")

TF599
OS

Fabric
94 Poly/6 Spandex Poplin

Fabric
94 Poly/6 Spandex Poplin

Contrast
Black

Contrast
Pewter Sweatband

Pockets
Welt Pockets

Coordinating Colors
Black, Pewter, White

Coordinating Colors
Black, Pewter, White

All styles featured are Fashion and available while supplies last.



PEANUTS

Dog's Best Friend (PNES)



TF752
XXS-3XL (26")

Fabric
94 Poly/6 Spandex Poplin

Pockets
Welt Pockets

Coordinating Colors
Black, Shocking Pink, White

Supercute Snack Pack (HSSP)



TF750
XXS-3XL (26")

TF599
OS

Fabric
94 Poly/6 Spandex Poplin

Fabric
94 Poly/6 Spandex Poplin

Contrast
Black

Contrast
Pewter Sweatband

Pockets
Patch Pockets, Cell Phone Pocket

Coordinating Colors
Black, Shocking Pink, Turquoise, White

Coordinating Colors
Black, Shocking Pink, Turquoise, White

Keroppi Tropical (KPPP)



TF751
XXS-3XL (26")

TF502
OS

Fabric
95 Poly/5 Spandex Poplin

Fabric
95 Poly/5 Spandex Poplin

Contrast
Royal

Contrast
Pewter Sweatband

Pockets
Patch Pockets

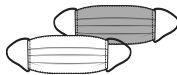
Coordinating Colors
Black, Royal, Teal Blue, Turquoise, White

Coordinating Colors
Black, Royal, Teal Blue, Turquoise, White



BREAST CANCER AWARENESS PRINT

Loving Floral (LOFA)



CK646
XXS-5XL (26")

CK301
XXS-5XL (28")

CK501
OS

CK511
OS

Fabric
97 Cotton/3 Spandex Poplin

Contrast
Electric Pink

Pockets
Patch Pockets, Interior Pocket,
Pen Slot

Coordinating Colors
Black, Electric Pink, Pewter, Red,
Shocking Pink, White

Fabric
97 Cotton/3 Spandex Poplin

Contrast
Pewter

Pockets
Patch Pockets

Coordinating Colors
Black, Electric Pink, Pewter, Red,
Shocking Pink, White

Fabric
97 Cotton/3 Spandex Poplin

Contrast
Pewter Sweatband

Coordinating Colors
Black, Electric Pink, Pewter, Red,
Shocking Pink, White

Fabric
97 Cotton/3 Spandex Poplin

Contrast
Pewter

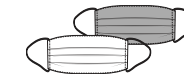
Coordinating Colors
Black, Electric Pink, Pewter, Red,
Shocking Pink, White

All styles featured are Fashion and available while supplies last.



MEN'S PRINT

In The Wild (INHW)



CK692 Men's
XS-5XL (28½")

CK500
OS

CK511
OS

Fabric
97 Cotton/3 Spandex Poplin

Pockets
Chest Pockets, Pen Slot

Coordinating Colors
Black, Grey, Pewter, White

Fabric
97 Cotton/3 Spandex Poplin

Contrast
Pewter Sweatband

Coordinating Colors
Black, Grey, Pewter, White

Fabric
97 Cotton/3 Spandex Poplin

Contrast
Pewter

Coordinating Colors
Black, Grey, Pewter, White



CK616
XXS-5XL (26")

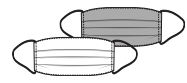
Fabric
97 Cotton/3 Spandex Poplin

Pockets
Patch Pockets

Coordinating Colors
Lemon Sugar, Navy, Red,
Turquoise, White

All styles featured are Fashion and available while supplies last.

Stay Curious (STCU)



CK652
XS-3XL (26")

CK301
XS-3XL (28")

CK511
OS

Fabric
97 Cotton/3 Spandex Poplin

Pockets
Patch Pockets, Pen Slot

Coordinating Colors
Black, Electric Pink, Grey,
Royal, White

Fabric
97 Cotton/3 Spandex Poplin

Contrast
Black

Pockets
Patch Pockets

Coordinating Colors
Black, Electric Pink, Grey,
Royal, White

Fabric
97 Cotton/3 Spandex Poplin

Contrast
Pewter

Coordinating Colors
Black, Electric Pink, Grey,
Royal, White

Hey Baby (HEYB)



CK652
XS-3XL (26")

Fabric
97 Cotton/3 Spandex Poplin

Pockets
Patch Pockets, Pen Slot

Coordinating Colors
Khaki, Navy, Royal, Shocking Pink,
Turquoise, White



AUTISM AWARENESS

Llama Love (LAMV)



CK651
XXS-5XL (26")

Fabric
97 Cotton/3 Spandex Poplin

Pockets
Patch Pockets, Pen Slot

Coordinating Colors
Black, Grey, Pewter, Red,
Royal, Turquoise, White



CK301
XXS-5XL (28")

Fabric
97 Cotton/3 Spandex Poplin

Contrast
Black

Pockets
Patch Pockets

Coordinating Colors
Black, Grey, Pewter, Red,
Royal, Turquoise, White

DENTAL PRINTS

My Main Squeeze (MQUZ)



CK652
XXS-5XL (26")

Fabric
97 Cotton/3 Spandex Poplin

Pockets
Patch Pockets, Pen Slot

Coordinating Colors
Black, Grey, Shocking Pink,
Teal Blue, Turquoise, White



CK301
XXS-5XL (28")

Fabric
97 Cotton/3 Spandex Poplin

Contrast
Teal Blue

Pockets
Patch Pockets

Coordinating Colors
Black, Grey, Shocking Pink,
Teal Blue, Turquoise, White

All styles featured are Fashion and available while supplies last.

Purr-fect Day (PUDY)



CK651
XS-5XL (26")



CK301
XS-5XL (28")

Fabric
97 Cotton/3 Spandex Poplin

Pockets
Patch Pockets, Pen Slot

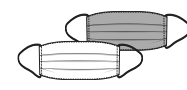
Coordinating Colors
Black, Electric Pink, Grey, Navy, Pewter, Turquoise, White

Fabric
97 Cotton/3 Spandex Poplin

Contrast
Navy

Pockets
Patch Pockets

Coordinating Colors
Black, Electric Pink, Grey, Navy, Pewter, Turquoise, White



CK511
OS

Fabric
97 Cotton/3 Spandex Poplin

Contrast
Pewter

Coordinating Colors
Black, Electric Pink, Grey, Navy, Pewter, Turquoise, White

Pand-Aid (PAID)



CK637
XS-3XL (26")

Fabric
94 Poly/6 Spandex Poplin

Pockets
Welt Pockets

Coordinating Colors
Black, Electric Pink, Red, White

Earth Day (EART)



CK616
XS-3XL (26")

Fabric
97 Cotton/3 Spandex Poplin

Pockets
Patch Pockets

Coordinating Colors
Black, Grey, Hunter, Pewter, Royal, Turquoise, White

Polka Dot Spot (PLKA)



CK662
XS-3XL (26")

Fabric
94 Poly/6 Spandex Poplin

Pockets
Patch Pockets, Pen Slot

Coordinating Colors
Black, Lemon Sugar, Royal, Teal Blue, Turquoise, White



CK502
OS

Fabric
94 Poly/6 Spandex Poplin

Contrast
Pewter Sweatband

Coordinating Colors
Black, Lemon Sugar, Royal, Teal Blue, Turquoise, White

Toad Away (TAAW)



CK637
XS-3XL (26")

Fabric
94 Poly/6 Spandex Poplin

Pockets
Welt Pockets

Coordinating Colors
Black, Electric Pink, Lemon Sugar, Turquoise, White

CAREISMATIC BRANDS

9800 De Soto Ave.
Chatsworth, CA 91311

Contact us for all your asset needs:
digitalassets@careismatic.com

Order on CBI Central: cbicentral.com

Customer Care:
800.283.7272

M – F, 6 am to 4 pm PST

Fax: 888.283.7271

Email: orderinquiry@careismatic.com
(Subject line: Order)

CherokeeUniforms.com



@cherokeeuniforms

8040/JAN21