



MEDICAL

SPRING '22 PRODUCT GUIDE



TABLE OF CONTENTS

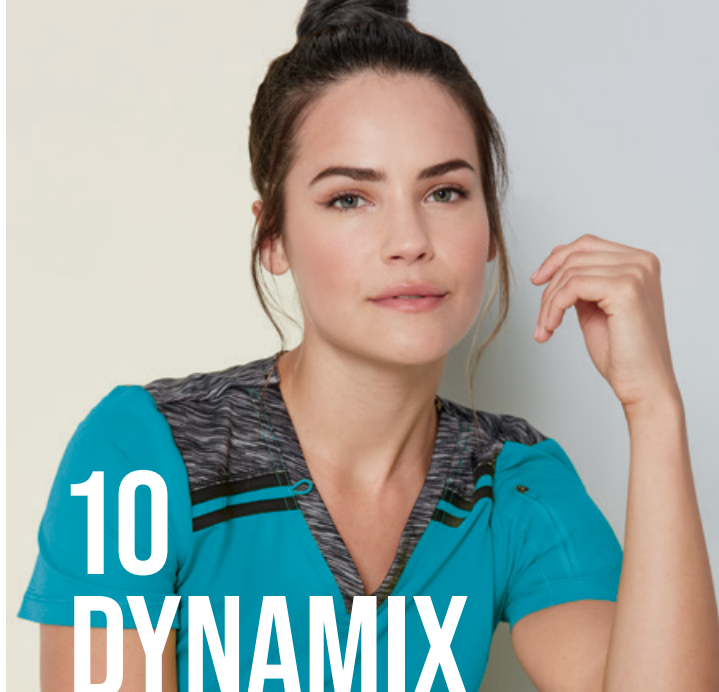


on the cover:

REAL WORKWEAR FOR REAL PEOPLE

Dhania Innocencio, RN

A single mom with an active three-year-old, Dhania works at an assisted living facility in Pasadena, CA.



left page:
DK940
Assorted
V-Neck Tops

right page:
(left)
DK740
Mélange
V-Neck Top
in Pool (PXOL)

(center)
DK875
V-Neck Top With
Rib-Knit Panels
in Chilled Berry
(CLBY)

(bottom)
DK615
V-Neck Top
in New Dawn
(NWDA)

(right, center)
DK853
Fading Plaid
V-Neck Top
(FGPL)

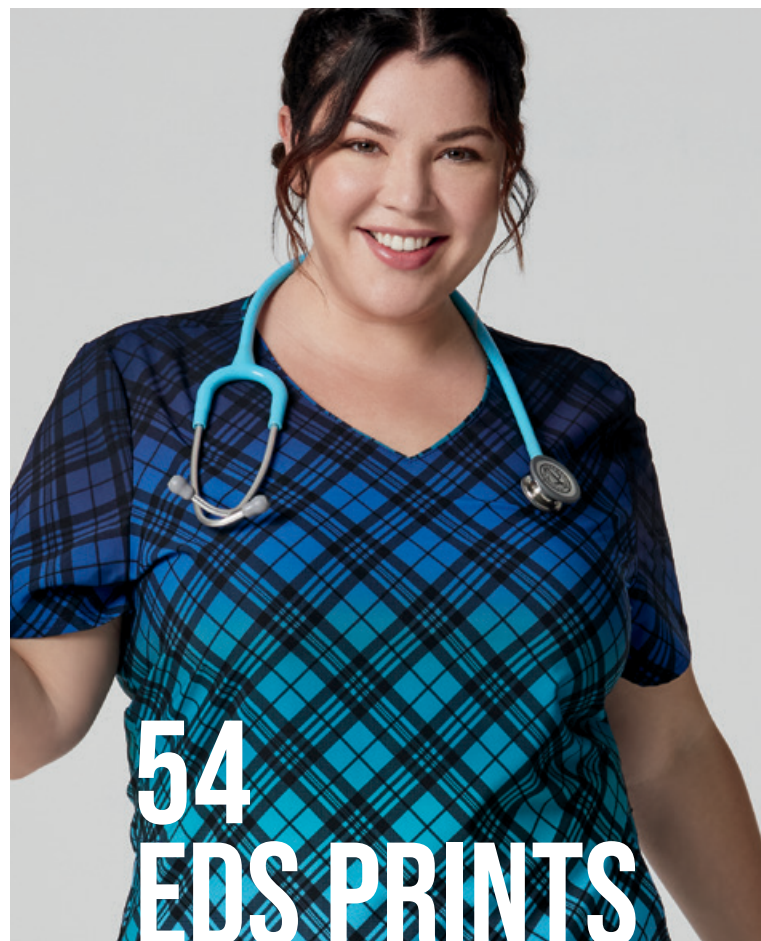
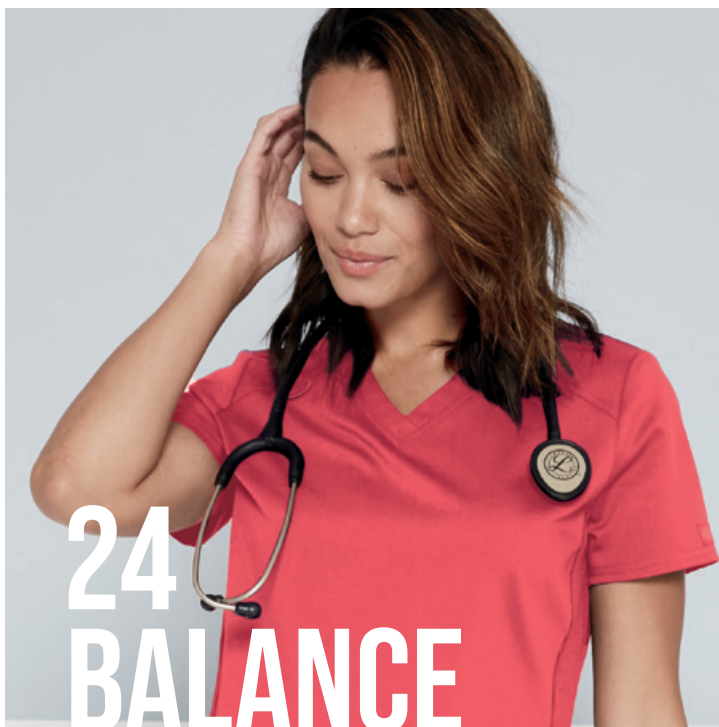


TABLE OF CONTENTS

4	RETRO	74	LAB COATS
10	DYNAMIX	76	FIT GUIDE
24	BALANCE	77	SIZE CHARTS
36	EDS ESSENTIALS	78	INDEX
48	EDS SIGNATURE		
54	EDS PRINTS		
64	GEN FLEX		
68	XTREME STRETCH		
70	INDUSTRIAL LAUNDRY		



RETRO



4-WAY
STRETCH



MOISTURE
WICKING



STRONG &
DURABLE

DK780

Mock Wrap Top



Sizes:

XXS-3XL (26")

- Contemporary fit
- Three pockets: two angled front pockets, zip pocket
- Logo instrument twill tape loops inside right pocket
- Shoulder and back yokes
- Front princess lines
- Retro detail inside sleeve hem and side vents
- Shirttail hem
- Side vents

Fabric:

94 Poly/6 Spandex
Crosshatch Dobby

Available Colors:

Black BLK	Ciel Blue CIE ¹	Navy NAV
Pewter PWT	Royal ROY	Wine WIN

¹All Ciel Blue comes with white Retro detail

DK790

V-Neck Top
in Wine (WIN)

WOMEN'S

EDGY, VIBRANT, YOUTHFUL, COOL

Dickies Retro combines a Gen-X design sensibility with high-tech performance fabric – a poly/spandex textured crosshatch dobby that's lightweight, stretchy, and moisture-wicking. Retro's style lines and details give these pieces a hip, vibrant look, with check print, piping, high-low hemlines, and more. Available in Contemporary and Men's fits.

DK035/P/T Mid Rise Pull-on Cargo Pant



Sizes:
XXS-3XL (30")
[P] XXS-2XL (27½")
[T] XS-2XL (33")

- Contemporary fit
- Logo elastic at top of rib-knit waistband
- Seven pockets: two front patch pockets, two cargo pockets, a utility pocket, two back patch pockets
- Side vents
- Tapered leg, 14" opening

Fabric:
94 Poly/6 Spandex
Crosshatch Dobby

Available Colors:

Black BLK	Ciel Blue CIE¹	Navy NAV
Pewter PWT	Royal ROY	Wine WIN

¹All Ciel Blue comes with white Retro detail

DK790 V-Neck Top



Sizes:
XXS-3XL (26")

- Contemporary fit
- Front and back princess lines
- Three pockets: patch pockets, welt cellphone pocket
- Piping at neck and sleeve bands
- Retro detail at hem
- Shirttail hem
- Side vents

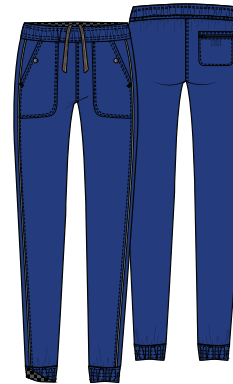
Fabric:
94 Poly/6 Spandex
Crosshatch Dobby

Available Colors:

Black BLK	Caribbean Blue CAR	Ciel Blue CIE¹
Galaxy Blue GAB	Navy NAV	Pewter PWT
Red RED	Royal ROY	Wine WIN

¹All Ciel Blue comes with white Retro detail

DK050/P/T Mid Rise Jogger Pant



Sizes:
XXS-3XL (28½")
[P] XXS-2XL (26")
[T] XS-2XL (31½")

- Contemporary fit
- Elastic waist with inside adjustable logo drawstring
- Three pockets: angled front pockets with snap closure, back pocket with zipper closure
- Piping along leg side seam
- Elastic cuffs can be folded over to show Retro detail on inside
- Tapered leg, 9½" opening

Fabric:
94 Poly/6 Spandex
Crosshatch Dobby

Available Colors:

Black BLK	Caribbean Blue CAR	Ciel Blue CIE¹
Galaxy Blue GAB	Navy NAV	Pewter PWT
Red RED	Royal ROY	Wine WIN

¹All Ciel Blue comes with white Retro detail

DK311 Zip Front Jacket



Sizes:
XXS-3XL (26")

- Contemporary fit
- Front and back princess lines
- Stylized sleeve seams
- Two pockets with zipper closure
- Rib-knit cuffs
- Retro detail at hem
- High-low hemline

Fabric:
94 Poly/6 Spandex
Crosshatch Dobby

Available Colors:

Black BLK	Navy NAV	Pewter PWT
Royal ROY		

DK651
V-Neck Top
in Black/Pewter
(BLK)

DK250
Mid Rise Jogger
in Black/Pewter
(BLK)

WOMEN'S (CONT.)

DK651 V-Neck Top



Sizes:
XS-3XL (26")

- Contemporary fit
- Kangaroo pocket
- Instrument loops
- Contrast yokes and sleeves
- Front and back princess seams
- Contrast stitching at front princess seams
- Curved hem with bungee adjusters

Fabric:
94 Poly/6 Spandex
Crosshatch Dobby

Available Colors:

Black/Pewter
BLK*

DK250/P Mid Rise Jogger



Sizes:
XS-3XL (29")
[P] XS-2XL (26½")

- Contemporary fit
- Covered elastic waistband with adjustable bungee drawstring
- Bungee drawstring finished with toggle
- Four pockets: two front pockets, cargo pocket, back pocket
- Contrast stitching on side seam and cuffs
- Encased elastic cuffs
- Tapered leg, 9½" opening

Fabric:
94 Poly/6 Spandex
Crosshatch Dobby

Available Colors:

Black/Pewter
BLK*

MEN'S

DK930

V-Neck Top



Sizes:

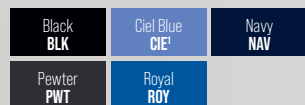
XS-3XL (29")

- Men's fit
- Four pockets: chest pocket, zip chest pocket with Retro lining, two in-seam pockets
- Shoulder and back yokes
- Side vents

Fabric:

94 Poly/6 Spandex
Crosshatch Dobby

Available Colors:



*All Ciel Blue comes with white Retro detail

DK360

Zip Front Bomber Jacket



Sizes:

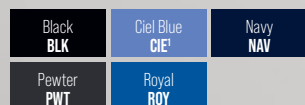
XS-3XL (27")

- Men's fit
- Two pockets with zipper closure
- Athletic seaming detail
- Rib-knit neckband, waistband, and cuffs
- Retro detail inside zipper placket

Fabric:

94 Poly/6 Spandex
Crosshatch Dobby

Available Colors:



*All Ciel Blue comes with white Retro detail



DK930

Men's
V-Neck Top
in Pewter
(PWT)

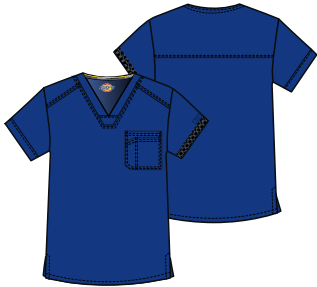
DK360

Zip Front Bomber
Jacket in Black
(BLK)

MEN'S (CONT.)

DK810

V-Neck Top



Sizes:

XS-3XL (28½")

- Men's fit
- Shoulder and back yokes
- Two pockets: double chest pockets plus pen slot
- Retro detail on inside of sleeve hem
- Sleeve can be folded over to show Retro detail
- Side vents

Fabric:

94 Poly/6 Spandex
Crosshatch Dobby

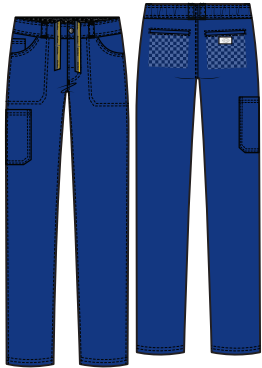
Available colors:

Black BLK	Caribbean Blue CAR	Ciel Blue CIE [†]
Galaxy Blue GAB	Navy NAV	Pewter PWT
Royal ROY	Wine WIN	

[†]All Ciel Blue comes with white Retro detail

DK055/S/T

Natural Rise Zip Fly Pant



Sizes:

XS-3XL (31½")

[S] XS-2XL (29")

[T] S-2XL (34½")

- Men's fit
- Button front waist, interior drawstring, and zip fly closure
- Elastic back waistband with belt loops
- Six pockets: front pockets, coin pocket, cargo pocket, back welt pockets with Retro detail lining
- Straight leg, 16" opening

Fabric:

94 Poly/6 Spandex
Crosshatch Dobby

Available colors:

Black BLK	Caribbean Blue CAR	Ciel Blue CIE [†]
Galaxy Blue GAB	Navy NAV	Pewter PWT
Royal ROY	Wine WIN	

[†]All Ciel Blue comes with white Retro detail

DK810

V-Neck Top
in Galaxy Blue
[GAB]

DK055




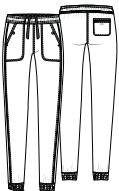
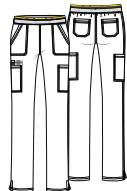
Natural Rise
Zip Fly Pant
in Galaxy Blue
[GAB]



RETRO COLOR AND STYLE MATRIX

All styles and colors featured are reorderable, unless otherwise noted. Styles are made from Poly/Spandex Crosshatch Dobby. Center back lengths and inseams are noted in parentheses.

WOMEN'S

				
DK790	DK780	DK311	DK050/P/T	DK035/P/T
V-Neck Top XXS-3XL (26")	Mock Wrap Top XXS-3XL (26")	Zip Front Jacket XXS-3XL (26")	Mid Rise Jogger XXS-3XL (28½") [P] XXS-2XL (26") [T] XS-2XL (31½")	Mid Rise Cargo Pull-on Pant XXS-3XL (30") [P] XXS-2XL (27½") [T] XS-2XL (33")



DK651

V-Neck Top
XS-3XL (26")

Black/Pewter
BLK*



DK250/P

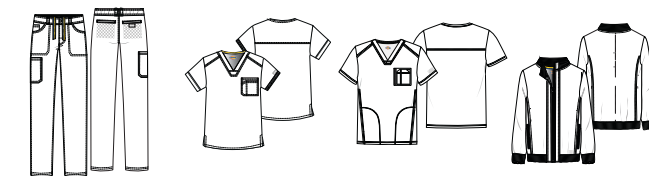
Mid Rise Jogger
XS-3XL (29")
[P] XS-2XL (26½")

Black/Pewter
BLK*

Black
Navy
Pewter
Royal
Ciel Blue
Red
Caribbean Blue
Wine
Galaxy Blue

BLK				
NAV				
PWT				
ROY				
CIE			style not available in this color	
RED	style not available in this color	style not available in this color		style not available in this color
CAR	style not available in this color	style not available in this color		style not available in this color
WIN		style not available in this color		
GAB	style not available in this color	style not available in this color		style not available in this color

MEN'S



DK055/S/T	DK810	DK930	DK360
Natural Rise Zip Fly Pant XS-3XL (31½") [S] XS-2XL (29") [T] S-2XL (34½")	V-Neck Top XS-3XL (28½")	V-Neck Top XS-3XL (29")	Zip Front Bomber Jacket XS-3XL (27")

Black
Navy
Pewter
Royal
Ciel Blue
Caribbean Blue
Wine
Galaxy Blue

BLK			
NAV			
PWT			
ROY			
CIE			
CAR		style not available in this color	style not available in this color
WIN		style not available in this color	style not available in this color
GAB		style not available in this color	style not available in this color

DK740
Mélange V-Neck Top
in Pool (PXOL)

DYNAMIX

STYLE HIGHLIGHTS



4-WAY
STRETCH



MOISTURE
WICKING



LIGHTWEIGHT

INSPIRED BY ACTIVEWEAR, DESIGNED FOR WORK.

Dynamix combines the look and feel of athleisure with the function and performance hardworking healthcare pros demand. It features lightweight, moisture-wicking, four-way-stretch fabric, strategically placed pockets, and clever storage features. Thoughtful details and trim complete the collection's signature sporty-casual look.

NEW! WOMEN'S

DK730

V-Neck Top



Sizes:

XS-3XL (26")

- Contemporary fit
- Two patch pockets
- Left-sleeve zipper pocket
- Princess line detail
- Heat transfer logo
- Tonal cable-management outlet
- Shirttail hem with side vents

Fabric:

91 Poly/9 Spandex Textured Dobby

New Colors:

Pool
PXOL*

DK730

V-Neck Top
in Pool (PXOL)



DK740

Mélange V-Neck Top



Sizes:

XS-3XL (26")

- Contemporary fit
- Three pockets: two patch pockets, left-sleeve zipper pocket
- Tonal cable-management outlet inside right pocket
- Space-dyed neckband and yokes
- Front and back princess lines
- Shirttail hem
- Side vents

Fabric:

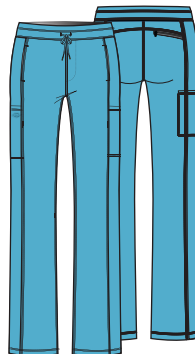
91 Poly/9 Spandex Textured Dobby

New Colors:

Pool
PXOL*

DK130/P/T

Mid Rise Drawstring Pant



Sizes:

XS-3XL (30½")
[P] XS-2XL (28")

- Contemporary fit
- Interior elastic waistband with drawstring
- Five pockets: two front slash pockets, two side cargo pockets, zip-closure back pocket
- Side panels
- Side vents
- Straight leg, 17" opening

Fabric:

91 Poly/9 Spandex Textured Dobby

New Colors:

Pool
PXOL*

Indicates: * Fashion Colors | † Available in 6XL | 📌 Style/color now available as Fashion | Fashion colors are not reorderable. All prints are fashion unless otherwise noted.

To place an order, please call Customer Care: 800.283.7272 | M-F | 6 AM to 4 PM PST | Fax: 888.283.7271 | or order online at cbicentral.com

NEW! SPRING 22' CAPSULE

DK727
V-Neck Top



Sizes:
XS-3XL (25½")

- Contemporary fit
- Two-tone neckband with crossover back neckline
- Two front-to-back wraparound pockets
- Sleeve and shoulder stitching
- Front and back princess seams
- Curved hemline
- Back vents

Fabric:
91 Poly/9 Spandex Textured Dobby

New Colors:



DK227
Mid Rise Jogger



Sizes:
XS-3XL (29")

- Contemporary fit
- Drawstring waist with printed logo elastic waistband
- Contrast color drawstring
- Three pockets: two front zip pockets, back patch pocket
- Angled stitch lines on front and back
- Encased elastic cuffs
- Tapered leg, 9½" opening

Fabric:
91 Poly/9 Spandex Textured Dobby

New Colors:



NEW! SPRING 22' WOMEN'S PRINTS

DK602
Tie Dye Tropics (TDTTP)



Sizes:
XXS-5XL (26")

- Contemporary fit
- Three pockets: two patch pockets, left sleeve zipper pocket
- Cable management outlet inside right pocket
- Space-dyed knit yokes and neckband
- Bungee loop at neckline
- Princess lines
- Shirttail hem
- Side vents
- Four-way stretch

Fabric:
52 Recycled Poly/40 Poly/8 Spandex Poplin

Contrast:
Black Mélange, Pool

Coordinating Colors:



DK839
Rainbow Stripes (RBSR)



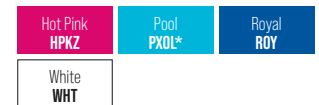
Sizes:
XS-3XL (26")

- Contemporary fit
- Two welt pockets
- Bungee loop at neckline
- Contrast yokes and sleeves
- Princess seams
- Shirttail hem
- Side vents
- Moisture-wicking
- Four-way stretch

Fabric:
91 Poly/9 Spandex Textured Dobby

Contrast:
Royal

Coordinating Colors:



DK622

Confetti Pop [CFPP]

**Sizes:**

XXS-5XL (26")

- Contemporary fit
- Shaped neckline
- Contrast front and back yokes
- Bungee loop on right yoke seam
- Two patch pockets
- Shirttail hem
- Side vents
- Four-way stretch

Fabric:52 Recycled Poly/40 Poly/
8 Spandex Poplin**Contrast:**

Black

Coordinating Colors:

Black BLK	Hot Pink HPKZ	Pewter PWT
Pool PXOL*	White WHT	

DK766

Colorful Crackle [CLCK]

**Sizes:**

XS-3XL (26½")

- Contemporary fit
- Two pockets: sleeve pocket, zip front pocket
- Contrast rib-knit neck insets
- Front and back yokes
- Front and back princess seams
- High-low shirttail hem
- Side vents
- Moisture-wicking
- Four-way stretch

Fabric:

91 Poly/9 Spandex Textured Dobby

Contrast:

Navy

Coordinating Colors:

Hot Pink HPKZ	Navy NAV	New Dawn NWDA*
Pool PXOL*	Royal ROY	White WHT

NEW! SPRING 22' MEN'S PRINTS**DK731**

Tough Glowing Hot Pink [TGHP]

**Sizes:**

XS-3XL (26")

- Contemporary fit
- Three pockets: two patch pockets, left sleeve zipper pocket
- Tonal cable-management outlet inside right pocket
- Bungee loop at neckline
- Front and back yokes
- Princess lines
- Shirttail hem
- Side vents
- Moisture-wicking
- Four-way stretch

Fabric:

91 Poly/9 Spandex Textured Dobby

Contrast:

None

Coordinating Colors:

Black BLK	Hot Pink HPKZ	Pewter PWT
White WHT		

DK779

Tough Glowing [TGWN]

**Sizes:**

XS-5XL (29")

- Men's fit
- Rib-knit neckband
- Two pockets: Chest pocket, zip chest pocket
- D-ring at chest pocket
- Contrast stitching at the sleeve and shoulder
- Layered sleeve and bottom hem for a stylish "two-fer" look
- Back yoke
- Moisture-wicking
- Four-way stretch

Fabric:

91 Poly/9 Spandex Textured Dobby

Contrast:

Black, Neon Green

Coordinating Colors:

Black BLK	Pewter PWT	White WHT
--------------	---------------	--------------

DK740
Mélange V-Neck Top
in Techno Pink (TEPK)

CLASSIC FAVORITES

Indicates: * Fashion Colors | † Available in 6XL | **F** Style/color now available as Fashion | Fashion colors are not reorderable. All prints are fashion unless otherwise noted.

WOMEN'S

DK730
V-Neck Top

Sizes:
XXS-5XL (26")

- Contemporary fit
- Two patch pockets
- Left-sleeve zipper pocket
- Princess line detail
- Heat transfer logo
- Tonal cable-management outlet
- Shirttail hem with side vents

Fabric:
91 Poly/9 Spandex Textured Dobby

Available Colors:

Black BLK	Caribbean Blue CAR	Ciel Blue CIE
Eggplant EGG	Galaxy Blue GAB	Navy NAV
Olive OLV	Pewter PWT	Pool PXOL*
Red RED	Royal ROY	Techno Pink TEPK*
Wine WIN	White WHT	

Details:

Tonal cable-routing outlet in pocket shown in Royal (ROY)

DK740
Mélange V-Neck Top

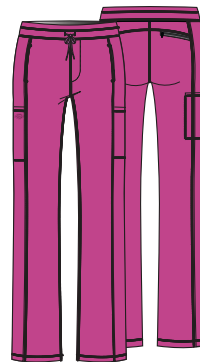
Sizes:
XXS-5XL (26")

- Contemporary fit
- Three pockets: two patch pockets, left-sleeve zipper pocket
- Tonal cable-management outlet inside right pocket
- Space-dyed neckband and yokes
- Front and back princess lines
- Shirttail hem
- Side vents

Fabric:
91 Poly/9 Spandex Textured Dobby

Available Colors:

Black/Hot Pink BKHT*	Hot Pink HPKZ*
Navy NAV*	Pewter/Red PWRD*
Pool PXOL*	Red RED*
Techno Pink TEPK*	

DK130/P/T
Mid Rise Drawstring Pant

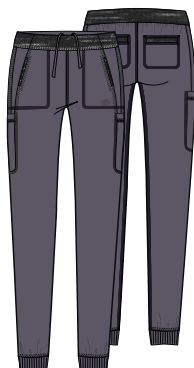
Sizes:
XXS-5XL (30½")
[P] XXS-2XL (28")
[T] XS-2XL (33½")

- Contemporary fit
- Interior elastic waistband with drawstring
- Five pockets: two front slash pockets, two side cargo pockets, zip-closure back pocket
- Side panels
- Side vents
- Straight leg, 17" opening

Fabric:
91 Poly/9 Spandex Textured Dobby

Available Colors:

Black BLK	Caribbean Blue CAR	Ciel Blue CIE
Eggplant EGG	Galaxy Blue GAB	Navy NAV
Olive OLV	Pewter PWT	Pool PXOL*
Red RED	Royal ROY	Techno Pink TEPK*
Wine WIN	White WHT	

DK185/P/T
Natural Rise Jogger Pant

Sizes:
XXS-3XL (28½")
[P] XXS-2XL (26")
[T] XS-2XL (31½")

- Contemporary fit
- Knit waistband with inside drawstring
- Six pockets: two front patch pockets, two cargo pockets, two back patch pockets
- Space-dyed trim at waist and pockets
- Rib-knit cuffs
- Tapered leg, 9½" opening

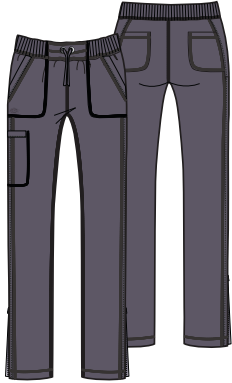
Fabric:
91 Poly/9 Spandex Textured Dobby

Available Colors:

Black BLK	Caribbean Blue CAR	Navy NAV*
Pewter PWT	Royal ROY	Wine WIN

WOMEN'S (CONT.)

DK190/P Natural Rise Skinny Drawstring Pant



Sizes:
XXS-3XL (30")
[P] XXS-2XL (27½")

- Contemporary fit
- Rib-knit covered elastic waistband with drawstring
- Five pockets: patch pockets, cargo pocket, back pockets
- Side zipper vents
- Skinny leg, 12" opening

Fabric:
91 Poly/9 Spandex Textured Dobby

Available Colors:



DK330 Zip Front Warm-up Jacket



Sizes:
XXS-5XL (25½")

- Contemporary fit
- Two in-seam pockets
- Rib-knit neckband, waistband, and cuffs
- Back yoke with locker loop
- Heat transfer logo
- Cable-management outlet in right pocket

Fabric:
91 Poly/9 Spandex Textured Dobby

Available Colors:



WOMEN'S PRINTS

DK602 Bright Blooms (BIGH)



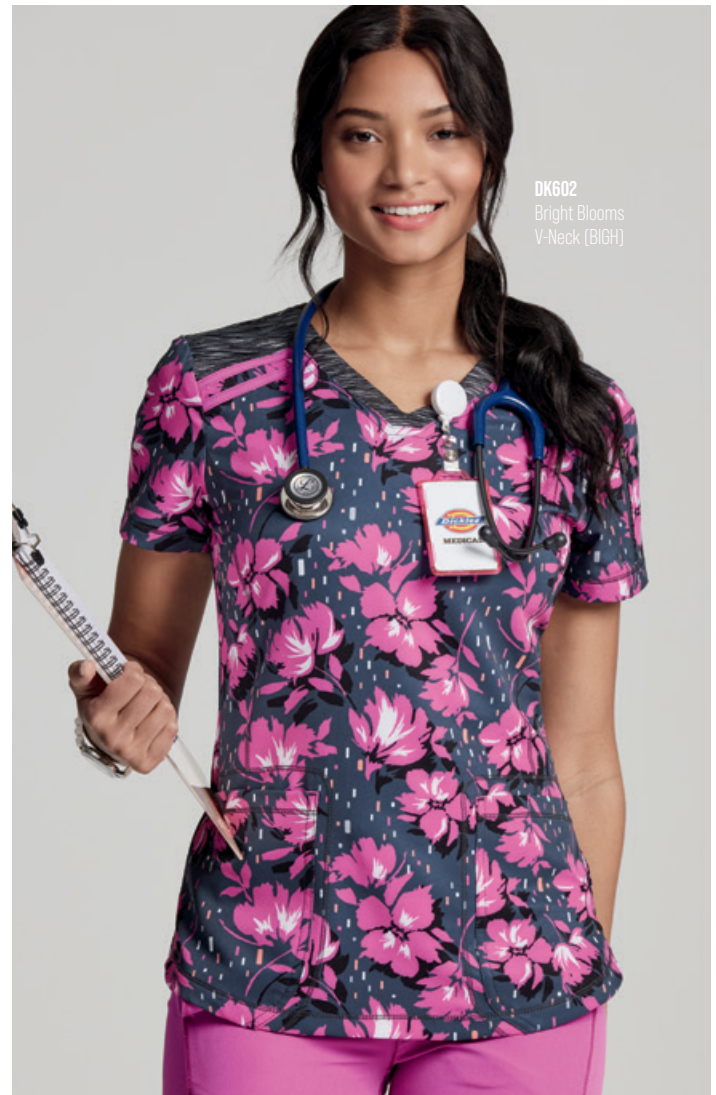
Sizes:
XS-3XL (26")

- Contemporary fit
- Three pockets: two patch pockets, sleeve zipper pocket
- Cable management outlet inside right pocket
- Space-dyed knit yokes and neckband
- Bungee loop at neckline
- Princess lines
- Shirttail hem
- Side vents
- Moisture-wicking
- Four-way stretch

Fabric:
91 Poly/9 Spandex Textured Dobby

Contrast:
Black

Coordinating Colors:



DK602
Bright Blooms
V-Neck (BIGH)

DK731

Dot's Get Going
(DTSV)

**Sizes:**

XS-3XL (26")

- Contemporary fit
- Three pockets: two patch pockets, left sleeve zipper pocket
- Tonal cable-management outlet inside right pocket
- Bungee loop at neckline
- Princess lines
- Shirttail hem
- Side vents
- Moisture-wicking
- Four-way stretch

Fabric:

91 Poly/9 Spandex Textured Dobby

Contrast:

None

Coordinating Colors:

Black BLK	Ciel Blue CIE	Eggplant EGG
Hot Pink HPKZ	Techno Pink TEPK*	White WHT

DK732

Fractured Prism
(FACP)

**Sizes:**

XS-3XL (26")

- Contemporary fit
- Three pockets: two patch pockets, left sleeve zipper pocket
- Cable management outlet inside right pocket
- Contrast sleeves, front and back yokes
- Bungee loop at neckline
- Princess lines
- Shirttail hem
- Side vents
- Moisture-wicking
- Four-way stretch

Fabric:

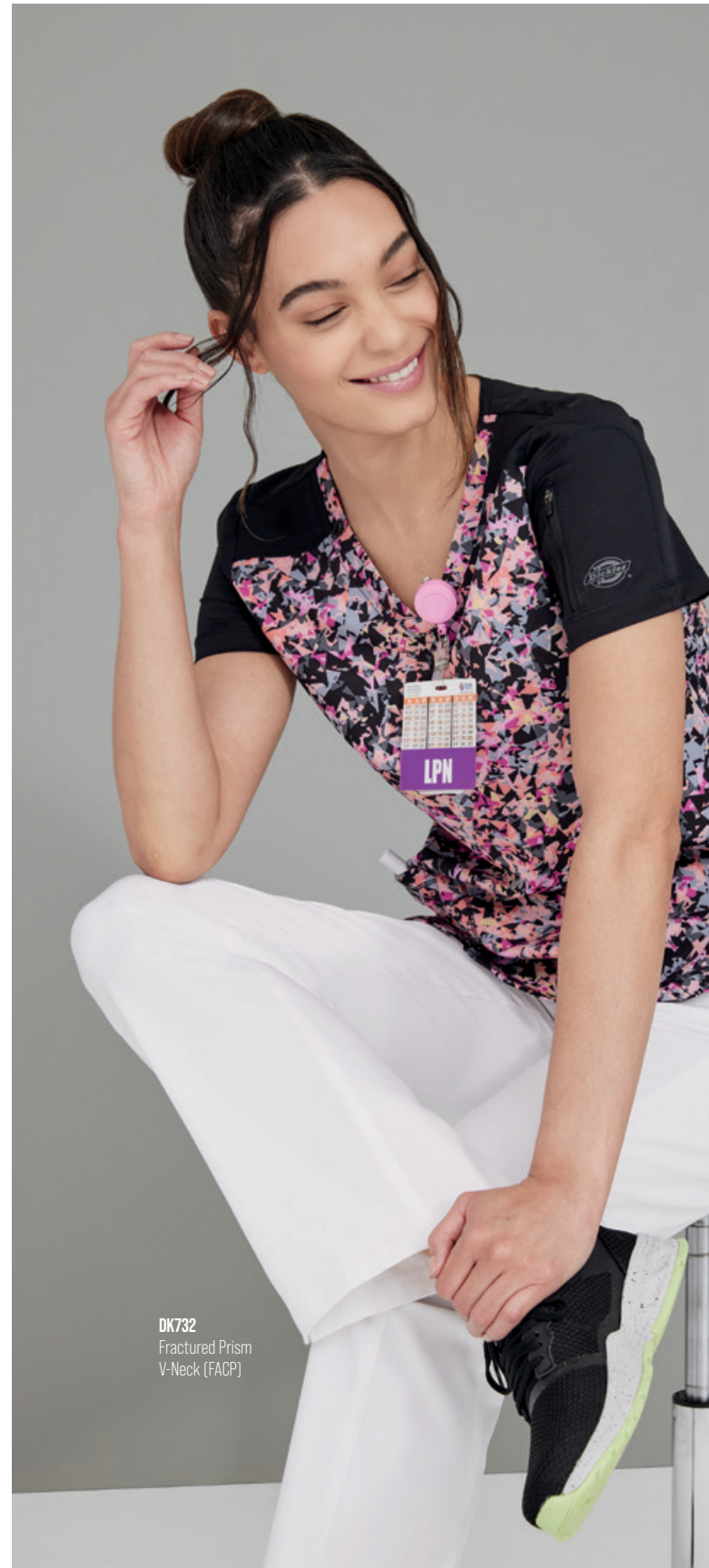
91 Poly/9 Spandex Textured Dobby

Contrast:

Black

Coordinating Colors:

Black BLK	Grey GRWZ	Pewter PWT
Techno Pink TEPK*	White WHT	



DK732
Fractured Prism
V-Neck (FACP)

DK732
Rainbow Revival
[RAWR]



Sizes:
XXS-5XL (26")

- Contemporary fit
- Three pockets: two patch pockets, left sleeve zipper pocket
- Tonal cable-management outlet inside right pocket
- Bungee loop at neckline
- Princess lines
- Shirttail hem
- Side vents
- Moisture-wicking
- Four-way stretch

Fabric:
91 Poly/9 Spandex
Textured Dobby

Contrast:
Navy

Coordinating Colors:

Black BLK	Blue Ice BLCE	Eggplant EGG
Navy NAV	Royal ROY	Techno Pink TEPK*
White WHT		

DK732
Rainbow Revival
V-Neck [RAWR]



MEN'S PRINTS

DK607

Fractured Prism Pewter
(FAPP)

**Sizes:**

XS-3XL (29")

- Men's fit
- Contrast rib-knit neckband
- Three pockets: chest pocket with pen slot, two welt pockets
- Cable management eyelet inside right pocket
- Back yoke
- Side vents
- Moisture-wicking
- Four-way stretch

Fabric:

91 Poly/9 Spandex Textured Dobby

Contrast:

Black

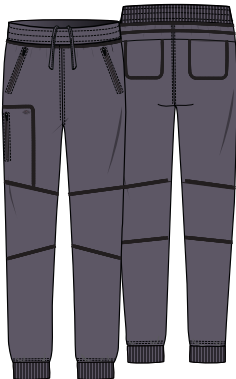
Coordinating Colors:

Black BLK	Grey GRWZ	Pewter PWT
White WHT		

MEN'S

DK111/S/T

Natural Rise Jogger Pant

**Sizes:**

XS-5XL (30")
[S] XS-3XL (27")
[T] S-2XL (33")

- Men's fit
- Rib-knit covered elastic waistband with inside drawstring
- Five pockets: two front zip pockets, zip cargo pocket, and two in-seam back pockets
- Stylized knee seams
- Back yoke seam
- Rib-knit cuffs
- Tapered leg, 10" opening

Fabric:

91 Poly/9 Spandex Textured Dobby

Available Colors:

Black BLK	Caribbean Blue CAR	Ciel Blue CIE
Navy NAV	Pewter PWT	Royal ROY
Wine WIN		

DK607

Fractured Prism
Men's V-Neck
(FAPP)

DK111

Natural Rise Jogger
Pant in Pewter
(PWT)





DK310
Zip Front
Warm-up Jacket
in Pewter (PWT)

MEN'S (CONT.)

DK610 V-Neck Top



Sizes:
XS-5XL (29")

- Men's fit
- Rib-knit neckband
- Bungee loop at neckline
- Two pockets: welt chest pocket, sleeve zipper pocket
- Front and back yokes
- Stitch detailing on back

Fabric:
91 Poly/9 Spandex Textured Dobby

Available Colors:

Black BLK	Caribbean Blue CAR	Ciel Blue CIE
Galaxy Blue GAB	Navy NAV	Olive OLV
Pewter PWT	Red RED	Royal ROY
White WHT	Wine WIN	

DK640 V-Neck Top



Sizes:
XS-5XL (30")

- Men's fit
- Three pockets: chest pocket with pen slot, front welt pockets
- Inside cable-routing grommet
- Back yoke
- Coverstitch detail

Fabric:
91 Poly/9 Spandex Textured Dobby

Available Colors:

Black BLK	Caribbean Blue CAR	Ciel Blue CIE
Galaxy Blue GAB	Navy NAV	Pewter PWT
Red RED	Royal ROY	White WHT
Wine WIN		

DK310 Zip Front Warm-up Jacket



Sizes:
XS-5XL (27")

- Men's fit
- Three pockets: chest zipper pocket, slash pockets
- Tonal cable-routing outlet
- Front and back yokes
- Tonal rib-knit cuffs

Fabric:
91 Poly/9 Spandex Textured Dobby

Available Colors:

Black BLK	Navy NAV	Pewter PWT
Red RED		

DK820 Button Front Collar Shirt



Sizes:
XS-5XL (29")

- Men's fit
- Button front closure
- Two chest pockets
- Mesh side panels
- Locker loop
- Heat transfer logo

Fabric:
91 Poly/9 Spandex Textured Dobby

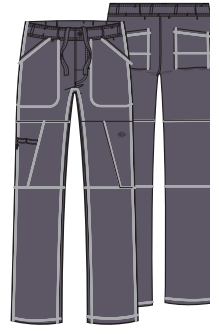
Available Colors:

Black BLK	Navy NAV	Pewter PWT
Royal ROY		



DK040
Natural Rise Jogger Pant
in Pewter (PWT)

DK110/S/T
Natural Rise Zip Fly Cargo Pant



Sizes:
XS-5XL (32")
[S] XS-3XL (29½")
[T] XS-3XL (35½")

- Men's fit
- Elastic waistband with inside drawstring
- Zip fly with button closure
- Six pockets: front slash pockets, cargo pockets, back patch pockets
- Right cargo pocket has a zipper closure and instrument loops
- Hidden inseam gusset
- Straight leg, 18" opening

Fabric:
91 Poly/9 Spandex Textured Dobby

Available Colors:

Black BLK	Caribbean Blue CAR	Ciel Blue CIE
Galaxy Blue GAB	Navy NAV	Olive OLV
Pewter PWT	Red RED	Royal ROY
White WHT	Wine WIN	

DK040/S/T
Natural Rise Jogger Pant



Sizes:
XS-5XL (30")
[S] XS-3XL (27½")
[T] S-2XL (33")

- Men's fit
- Rib-knit covered elastic waistband with inside drawstring
- Four pockets: slash front pockets, back pocket, cargo pocket
- Tapered leg, 10" opening

Fabric:
91 Poly/9 Spandex Textured Dobby

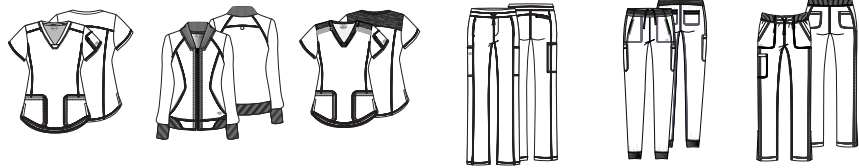
Available Colors:

Black BLK	Navy NAV	Pewter PWT
Royal ROY	Wine WIN	

DYNAMIX
COLOR AND
STYLE MATRIX

All styles and colors featured are reorderable and made from Poly/Spandex Textured Dobby, unless otherwise noted. Center back lengths and inseams are noted in parentheses.

WOMEN'S



DK730	DK330	DK740	DK130/P/T	DK185/P/T	DK190/P
V-Neck Top XXS-5XL (26")	Zip Front Warm-up Jacket XXS-5XL (25½")	Mélange V-Neck Top XXS-5XL (26") Mélange Knit on yokes and neckband indicated below. Contrast strapping indicated below.	Mid Rise Drawstring Pant XXS-5XL (30½") [P] XXS-2XL (28") [T] XS-2XL (33½")	Natural Rise Jogger Pant XXS-3XL (28½") [P] XXS-2XL (26") [T] XS-2XL (31½")	Natural Rise Skinny Drawstring Pant XXS-3XL (30") [P] XXS-2XL (27½")

Black	BLK			style not available in this color			
Navy	NAV			BLCE		F No Tall	
Pewter	PWT			style not available in this color			
Royal	ROY			style not available in this color			style not available in this color
Caribbean Blue	CAR			style not available in this color		No Tall	style not available in this color
Wine	WIN			style not available in this color		No Tall	style not available in this color
Red	RED	style not available in this color	BLK		style not available in this color		style not available in this color
Ciel Blue	CIE			style not available in this color		style not available in this color	style not available in this color
Olive	OLV	style not available in this color		style not available in this color		style not available in this color	style not available in this color
White	WHT			style not available in this color		style not available in this color	style not available in this color
Galaxy Blue	GAB			style not available in this color		style not available in this color	style not available in this color
Black/Hot Pink	BKHT	style not available in this color		HPKZ	style not available in this color	style not available in this color	style not available in this color
Eggplant	EGG	style not available in this color		style not available in this color		style not available in this color	style not available in this color
Pewter/Red	PWRD	style not available in this color		RED	style not available in this color	style not available in this color	style not available in this color
Techno Pink*	TEPK*	XS - 3XL		XS - 3XL	TEPK	XS-3XL, [P] XS-2XL	style not available in this color
New! Pool*	PXOL*	XS - 3XL		XS - 3XL	PXOL	XS-3XL, [P] XS-2XL	style not available in this color

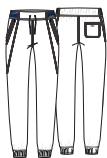
SPRING '22 CAPSULE



DK727

V-Neck Top
XS-3XL (25½")

Black BLK*
Pewter PWT*
Navy NAV*



DK227

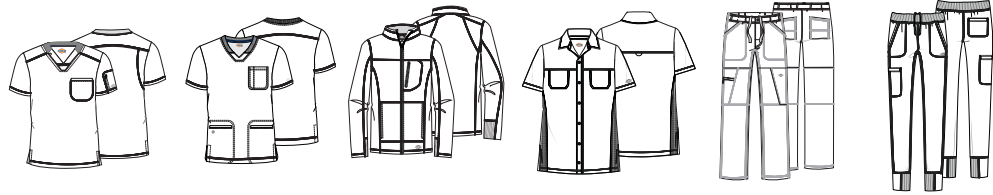
Mid Rise Jogger
XS-3XL (29")

Black BLK*
Pewter PWT*
Navy NAV*

DYNAMIX COLOR AND STYLE MATRIX

All styles and colors featured are reorderable and made from Poly/Spandex Textured Dobby, unless otherwise noted. Center back lengths and inseams are noted in parentheses.

MEN'S



DK610

V-Neck Top
XS-5XL (29")

DK640

V-Neck Top
XS-5XL (30")

DK310

Zip Front
Warm-up Jacket
XS-5XL (27")

DK820

Button Front
Collar Shirt
XS-5XL (29")

DK110/S/T

Natural Rise
Zip Fly Cargo Pant
XS-5XL (32")
[S] XS-3XL (29½")
[T] XS-3XL (35½")

DK040/S/T

Natural Rise
Jogger Pant
XS-5XL (30")
[S] XS-3XL (27½")
[T] S-2XL (33")

Black	BLK					
Navy	NAV					
Pewter	PWT					
Royal	ROY			style not available in this color		
Wine	WIN			style not available in this color	style not available in this color	No Tail
Caribbean Blue	CAR			style not available in this color	style not available in this color	style not available in this color
Ciel Blue	CIE			style not available in this color	style not available in this color	style not available in this color
Galaxy Blue	GAB			style not available in this color	style not available in this color	style not available in this color
White	WHT			style not available in this color	style not available in this color	style not available in this color
Olive	OLV		style not available in this color	style not available in this color	style not available in this color	style not available in this color
Red	RED			style not available in this color	style not available in this color	style not available in this color



DK111/S/T

Natural Rise Jogger
Pant
XS-5XL (30")
[S] XS-3XL (27½")
[T] S-2XL (33")

Black	BLK	
Navy	NAV	
Pewter	PWT	
Royal	ROY	
Wine	WIN	style not available in this color
White	WHT	style not available in this color
Red	RED	style not available in this color



BALANCE

STYLE HIGHLIGHTS



2-WAY
STRETCH



SIGNATURE
STYLING



DRAPES
PERFECTLY

DK875

V-Neck Top With
Rib-Knit Panels
in Chilled Berry
(CLBY)

FUNCTION AND STYLE IN EQUAL BALANCE.

A go-to collection that checks all the boxes, Dickies Balance delivers on-trend details, a flattering and comfortable fit, and in-demand performance features. In popular core colors and an extensive size range for women and men, this collection helps individuals and groups find the perfect balance.

NEW! WOMEN'S

DK875

V-Neck Top With
Rib-Knit Panels



Sizes:

XS-3XL (26")

- Contemporary fit
- Rib-knit inset at neckline
- Five pockets: two patch pockets, two side seam pockets, zipper pocket
- Shoulder and back yokes
- Bungee ID badge loop at right shoulder yoke
- Rib-knit side panels
- Shirttail hem
- Tonal label

Fabric:

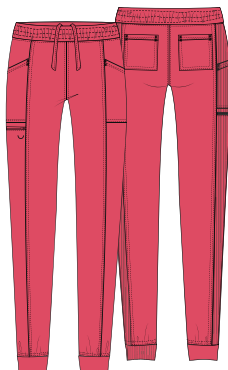
77 Poly/20 Rayon/3 Spandex Twill

New Colors:

Chilled Berry
CLBY*

DK155/P/T

Mid Rise Jogger



Sizes:

XS-3XL (30")

[P] XXS-2XL (26½")

- Contemporary fit
- Elastic waist with adjustable inside drawstring
- Front seams
- Five pockets: front pockets, zipper pocket, back pockets
- Bungee instrument loop at zipper pocket
- Rib-knit side panels and cuffs
- Tonal label
- Tapered leg, 8½" opening

Fabric:

77 Poly/20 Rayon/3 Spandex Twill

New Colors:

Chilled Berry
CLBY*

DK155

Mid Rise Jogger
in Chilled Berry
(CLBY)



CLASSIC FAVORITES

DK380
Snap Front Jacket
in Pewter
(PWT)

Indicates: * Fashion Colors | † Available in 6XL | **F** Style/color now available as Fashion | Fashion colors are not reorderable. All prints are fashion unless otherwise noted.

WOMEN'S

DK380

Snap Front Jacket

**Sizes:**

XXS-5XL (26½")

- Contemporary fit
- Three pockets: two front pockets, utility pocket on right
- Utility loops with bungee ID badge loop on left
- Front and back yoke seams
- Front and back princess seams
- Rib-knit cuffs

Fabric:

77 Poly/20 Rayon/3 Spandex Twill

Available Colors:

DK940

V-Neck Top

**Sizes:**

XXS-5XL (26")

- Contemporary fit
- Three pockets: two front pockets, utility pocket on right
- Front and back princess seams
- Decorative snap tabs at waist
- Rib-knit back side panels
- Back vents at princess seams

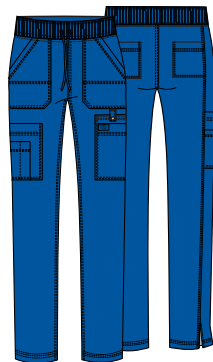
Fabric:

77 Poly/20 Rayon/3 Spandex Twill

Available Colors:

DK080/P/T

Mid Rise Drawstring Cargo Pant

**Sizes:**

XXS-5XL (30½")

[P] XXS-2XL (28")

[T] XS-2XL (33½")

- Contemporary fit
- Rib-knit covered elastic waistband with drawstring
- Eight pockets: two front pockets, three cargo pockets, utility pocket with snap closure, two back pockets
- Back leg seams
- Back vents
- Tapered leg, 14" opening

Fabric:

77 Poly/20 Rayon/3 Spandex Twill

Available Colors:

DK940
V-Neck Top
in Royal (ROY)

DK080
Mid Rise Drawstring
Cargo Pant
in Royal (ROY)



DK812
V-Neck Top With
Rib-Knit Panels
in Navy (NAV)

DK812
Mid Rise
Drawstring Pant
in Navy (NAV)

WOMEN'S (CONT.)

DK812 V-Neck Top With Rib-Knit Panels



Sizes:
XXS-5XL (26")

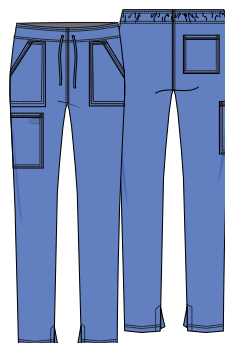
- Contemporary fit
- Chest pocket
- Rib-knit neckband
- Back yoke
- Rib-knit back side panels
- Shirttail hem

Fabric:
77 Poly/20 Rayon/3 Spandex Twill

Available Colors:

Black BLK	Ciel Blue CIE	Navy NAV
Royal ROY	Pewter PWT	

DK212/P/T Mid Rise Drawstring Pant



Sizes:
XXS-5XL (30½")
[P] XXS-2XL (28")
[T] XS-2XL (33½")

- Contemporary fit
- Interior elastic waistband
- Four pockets: two front patch pockets, cargo pocket, back patch pocket
- Interior vents
- Tapered leg, 15" opening

Fabric:
77 Poly/20 Rayon/3 Spandex Twill

Available Colors:

Black BLK	Ciel Blue CIE	Navy NAV
Royal ROY	Pewter PWT	

DK870 V-Neck Top With Rib-Knit Panels



Sizes:
XXS-5XL (27")

- Contemporary fit
- Two patch pockets
- Rib-knit neckband and back panels
- Bungee ID badge loop
- Shirttail hem
- Tonal label

Fabric:
77 Poly/20 Rayon/3 Spandex Twill

Available Colors:

Black BLK	Caribbean Blue CAR	Ciel Blue CIE
Deep Forest DFOT*	Frozen Grape FZGR*	Navy NAV
Pewter PWT	Wine WIN	Royal ROY

DK840

Mock Wrap Top

**Sizes:**

XXS-5XL (26")

- Contemporary fit
- Three pockets: two angled front patch pockets, zipper pocket
- Rib-knit inset at neckline and on side panels
- Shoulder and back yokes
- Bungee ID badge loop at right shoulder yoke
- Sleeve vents
- Shirttail hem

Fabric:

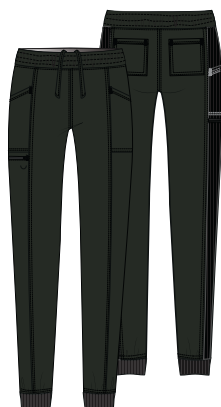
77 Poly/20 Rayon/3 Spandex Twill

Available Colors:

Black BLK	Caribbean Blue CAR	Ciel Blue CIE
Hunter HUN	Navy NAV	Pewter PWT
Royal ROY	Wine WIN	

DK155/P/T

Mid Rise Jogger

**Sizes:**

XXS-5XL (29")

[P] XXS-2XL (26½")

[T] XS-2XL (32")

- Contemporary fit
- Elastic waist with adjustable inside drawstring
- Front seams
- Five pockets: front pockets, zipper pocket, back pockets
- Bungee instrument loop at zipper pocket
- Rib-knit side panels and cuffs
- Tonal label
- Tapered leg, 8½" opening

Fabric:

77 Poly/20 Rayon/3 Spandex Twill

Available Colors:

Black BLK	Caribbean Blue CAR	Ciel Blue CIE
Chilled Berry CLBY*	Deep Forest DFOT*	Frozen Grape FZGR*
Hunter HUN	Navy NAV	Pewter PWT
Royal ROY	Wine WIN	

DK365

Zip Front Jacket

**Sizes:**

XXS-5XL (24½")

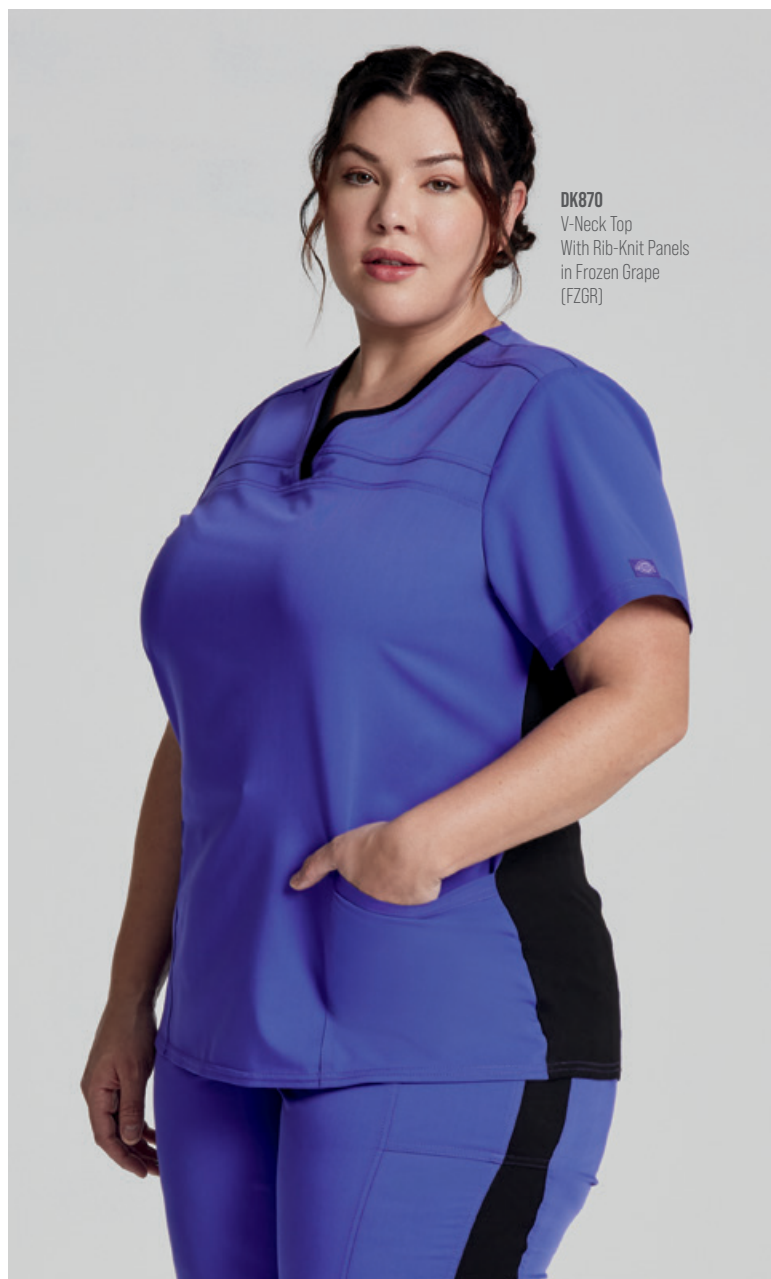
- Contemporary fit
- Two welt pockets
- Rib-knit neckband, waistband, and cuffs
- Sleeve strapping
- Tonal woven label

Fabric:

77 Poly/20 Rayon/3 Spandex Twill

Available Colors:

Black BLK	Ciel Blue CIE	Navy NAV
Pewter PWT	Royal ROY	

**DK870**

V-Neck Top
With Rib-Knit Panels
in Frozen Grape
(FZGR)

WOMEN'S (CONT.)

DK875

V-Neck Top With Rib-Knit Panels



Sizes:

XXS-5XL (26")

- Contemporary fit
- Rib-knit inset at neckline
- Five pockets: two patch pockets, two side seam pockets, zipper pocket
- Shoulder and back yokes
- Bungee ID badge loop at right shoulder yoke
- Rib-knit side panels
- Shirrtail hem
- Tonal label

Fabric:

77 Poly/20 Rayon/3 Spandex Twill

Available Colors:

Black BLK	Caribbean Blue CAR	Chilled Berry CLBY*
Ciel Blue CIE	Deep Forest DFOT*	Eggplant EGG
Frozen Grape FZGR*	Galaxy Blue GAB	Hunter HUN
Navy NAV	Pewter PWT	Royal ROY
Teal Blue TLB	White WHT	Wine WIN

DK135/P/T

Mid Rise Pull-on Pant



Sizes:

XXS-5XL (30")

[P] XXS-2XL (27½")

[T] XS-2XL (33")

- Contemporary fit
- Rib-knit covered elastic with inside drawstring
- Six pockets: two front patch pockets, cargo pocket, hidden zipper pocket, two back patch pockets
- Mock fly
- Utility loop
- Tonal label
- Straight leg, 15" opening

Fabric:

77 Poly/20 Rayon/3 Spandex Twill

Available Colors:

Black BLK	Caribbean Blue CAR	Ciel Blue CIE
Deep Forest DFOT*	Eggplant EGG	Frozen Grape FZGR*
Galaxy Blue GAB	Hunter HUN	Navy NAV
Pewter PWT	Royal ROY	Teal Blue TLB
White WHT	Wine WIN	

DK875

V-Neck Top With Rib-Knit Panels in Deep Forest (DFOT)

DK135

Mid Rise Pull-on Pant in Deep Forest (DFOT)

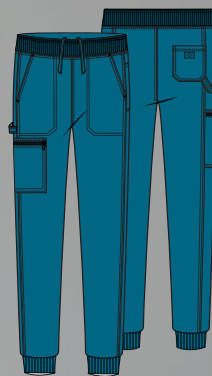


DK865

V-Neck Top
in Caribbean Blue
[CAR]

DK224

Mid Rise Jogger
in Caribbean Blue
[CAR]

MEN'S**DK224/S/T**
Mid Rise Jogger**Sizes:**

XS-5XL (30")
[S] XS-3XL (27½")
[T] S-2XL (33")

- Men's fit
- Rib-knit covered elastic waistband with inside drawstring
- Five pockets: two front pockets, cellphone pocket, zip cargo pocket, back pocket
- Utility loop
- Side panels
- Rib-knit cuffs
- Tapered leg, 10½" opening

Fabric:

77 Poly/20 Rayon/3 Spandex Twill

Available Colors:

Black BLK	Caribbean Blue CAR	Navy NAV
Pewter PWT	Royal ROY	



MEN'S (CONT.)

DK865
V-Neck Top



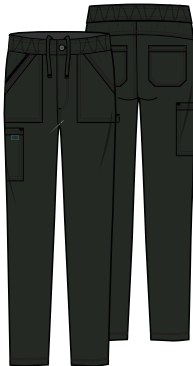
- Sizes:**
XS-5XL (29")
- Men's fit
 - Double chest pocket with zipper
 - Rib-knit side panels and neck inset
 - Bungee ID badge loop at right shoulder yoke
 - Tonal woven label

Fabric:
77 Poly/20 Rayon/3 Spandex Twill

Available Colors:

Black BLK	Caribbean Blue CAR	Ciel Blue CIE
Deep Forest DFOT*	Galaxy Blue GAB	Hunter HUN
Navy NAV	Pewter PWT	Royal ROY
Teal Blue TLB	White WHT	Wine WIN

DK220/S/T
Mid Rise Zip Fly Pant



- Sizes:**
XS-5XL (31½")
[S] XS-3XL (29")
[T] S-2XL (34½")
- Men's fit
 - Elastic waistband with inside drawstring
 - Zip fly with button closure
 - Six pockets: front patch pockets, cargo pocket, back patch pockets, a hidden zipper pocket
 - Tonal label
 - Straight leg, 16" opening

Fabric:
77 Poly/20 Rayon/3 Spandex Twill

Available Colors:

Black BLK	Caribbean Blue CAR	Ciel Blue CIE
Deep Forest DFOT*	Galaxy Blue GAB	Hunter HUN
Navy NAV	Pewter PWT	Royal ROY
Teal Blue TLB	White WHT	Wine WIN

DK865
V-Neck Top
in Deep Forest
(DFOT)

DK220
Mid Rise Zip Fly Pant
in Deep Forest
(DFOT)



DK370

Zip Front Bomber Jacket



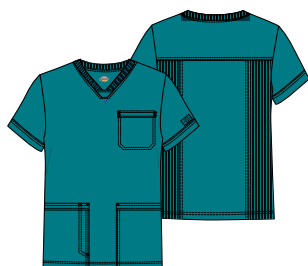
Sizes:
XS-5XL (30")

- Men's fit
- Five pockets: chest pocket, side seam pockets, inside pockets
- Sleeve seam with top stitching
- Front and back yokes
- Rib-knit neckband, cuffs, and waistband
- Tonal woven label

Fabric:
77 Poly/20 Rayon/3 Spandex Twill

Available Colors:**DK845**

V-Neck Top



Sizes:
XS-5XL (30")

- Men's fit
- Three pockets: patch pockets, chest pocket
- Pen slot on right patch pocket
- Rib-knit neckband and back side panels
- Back yoke
- Tonal label

Fabric:
77 Poly/20 Rayon/3 Spandex Twill

Available Colors:**DK370**

Zip Front Bomber
Jacket in Navy
(NAV)

DK220

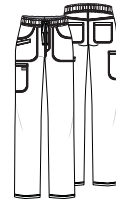
Mid Rise Zip Fly Pant
in Pewter
(PWT)



BALANCE
COLOR AND
STYLE MATRIX

All styles and colors featured are reorderable. Styles are made from Poly/Rayon/Spandex Twill, unless noted. Center back lengths and inseams are noted in parentheses.

WOMEN'S



DK870

V-Neck Top
With Rib-Knit
Panels
XXS-5XL (27")

DK875

V-Neck Top
With Rib-Knit
Panels
XXS-5XL (26")

DK840

Mock Wrap Top
XXS-5XL (26")

DK365

Zip Front Jacket
XXS-5XL (24½")

DK135/P/T

Mid Rise
Pull-on Pant
XXS-5XL (30")
[P] XXS-2XL
(27½")
[T] XS-2XL (33")

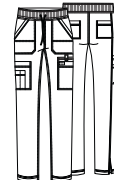
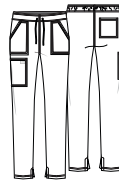
DK155/P/T

Mid Rise Jogger
XXS-5XL (29")
[P] XXS-2XL
(26½")
[T] XS-2XL (32")

- Black
Navy
Pewter
Wine
Ciel Blue
Royal
Caribbean Blue
Hunter
White
Teal Blue
Eggplant
Galaxy Blue
Frozen Grape*
Deep Forest*
New! Chilled Berry*

BLK
NAV
PWT
WIN
CIE
ROY
CAR
HUN
WHT
TLB
EGG
GAB
FZGR*
DFOT*
CLBY*

			style not available in this color		
style not available in this color			style not available in this color		
style not available in this color			style not available in this color		
style not available in this color		style not available in this color	style not available in this color		style not available in this color
style not available in this color		style not available in this color	style not available in this color		style not available in this color
style not available in this color		style not available in this color	style not available in this color		style not available in this color
style not available in this color		style not available in this color	style not available in this color		style not available in this color
XS-3XL	XS-3XL	style not available in this color	style not available in this color	XS-3XL, [P] XS-2XL	(XL-3XL) No Tall
XS-3XL	XS-3XL	style not available in this color	style not available in this color	XS-3XL, [P] XS-2XL	(XL-3XL) No Tall
style not available in this color	XS-3XL	style not available in this color	style not available in this color	XS-3XL, [P] XS-2XL	style not available in this color



DK812

V-Neck Top With
Rib-Knit Panels
XXS-5XL (26")

DK940

V-Neck Top
XXS-5XL (26")

DK380

Snap Front Jacket
XXS-5XL (26½")

DK212/P/T

Mid Rise
Drawstring Pant
XXS-5XL (30½")
[P] XXS-2XL (28")
[T] XS-2XL (33½")

DK080/P/T

Mid Rise
Drawstring
Cargo Pant
XXS-5XL (30½")
[P] XXS-2XL (28")
[T] XS-2XL (33½")

- Black
Navy
Pewter
Ciel Blue
Royal

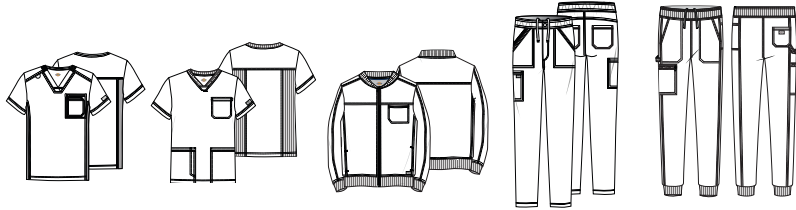
BLK
NAV
PWT
CIE
ROY

	style not available in this color	style not available in this color		style not available in this color

BALANCE
COLOR AND
STYLE MATRIX

All styles and colors featured are reorderable. Styles are made from Poly/Rayon/Spandex Twill, unless noted. Center back lengths and inseams are noted in parentheses.

MEN'S



DK865	DK845	DK370	DK220/S/T	DK224/S/T
V-Neck Top XS-5XL (29")	V-Neck Top XS-5XL (30")	Zip Front Bomber Jacket XS-5XL (30")	Mid Rise Zip Fly Pant XS-5XL (31½") [S] XS-3XL (29") [T] S-2XL (34½")	Mid Rise Jogger XS-5XL (30") [S] XS-3XL (27½") [T] S-2XL (33")

Black	BLK					
Navy	NAV					
Pewter	PWT					
Caribbean Blue	CAR			style not available in this color		style not available in this color
Ciel Blue	CIE			style not available in this color		style not available in this color
Royal	ROY			style not available in this color		style not available in this color
Wine	WIN			style not available in this color		style not available in this color
Galaxy Blue	GAB		style not available in this color	style not available in this color		style not available in this color
Hunter	HUN		style not available in this color	style not available in this color		style not available in this color
White	WHT		style not available in this color	style not available in this color		style not available in this color
Teal Blue	TLB		style not available in this color	style not available in this color		style not available in this color
Deep Forest*	DFOT*	(XL-3XL)	style not available in this color	style not available in this color	[S] S-2XL	style not available in this color





STYLE HIGHLIGHTS



4-WAY
STRETCH



STRONG &
DURABLE



EASY CARE

DK615
V-Neck Top
in New Dawn
(NWDA)



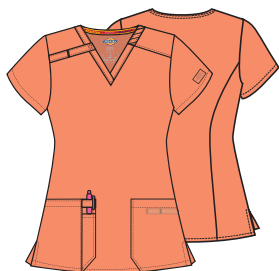
ESSENTIAL WORKWEAR FOR ESSENTIAL WORKERS.

EDS Essentials continues to offer performance, value, durability, and style that works overtime. Made from a comfortable four-way stretch, moisture-wicking poly/spandex in an ever-expanding selection of colors and styles, it's workwear that works all day long.

WOMEN'S

DK615

V-Neck Top



Sizes:

XS-3XL (26")

- Contemporary fit
- Twill tape at neckline
- Two patch pockets
- Pen slot with utility twill tape
- Instrument loops inside left pocket
- Shoulder yokes
- Instrument loops with snap at right shoulder
- Back princess lines
- Signature tonal woven label
- Signature logo twill tape at the back neck
- Side vents

Fabric:

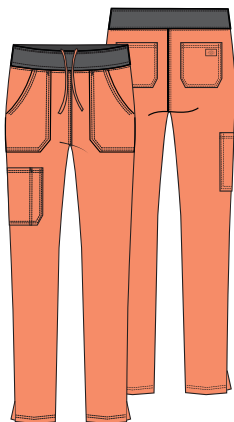
95 Poly/5 Spandex Poplin

New Colors:

New Dawn
NWDA*

DK090/P/T

Mid Rise Pull-on Pant



Sizes:

XS-3XL (30")
[P] XS-2XL (33")

- Contemporary fit
- Rib-knit covered elastic waistband with an inside drawstring
- Five pockets: two front pockets, cargo pocket with a pen slot, and two back pockets
- Side vents
- Tapered leg, 12" opening

Fabric:

95 Poly/5 Spandex Poplin


New Colors:

New Dawn
NWDA*



DK090

Mid Rise Pull-on Pant
in New Dawn
(NWDA)

A male medical professional is crouching, looking off to the side. He is wearing a dark grey V-neck short-sleeved shirt and matching drawstring pants. He has a blue stethoscope around his neck, a blue lanyard with a 'Dickies MEDICAL' ID badge, and a black digital watch on his left wrist. He is holding a blue pen in his right hand and a blue stethoscope in his left hand. He is wearing blue and white sneakers. The background is a plain, light grey wall and floor.

DK619
Unisex V-Neck Top
in Pewter
(PWPS)

DK019
Unisex Natural Rise
Drawstring Pant
in Pewter
(PWPS)

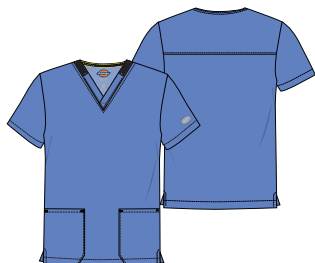
CLASSIC FAVORITES

Indicates: * Fashion Colors | † Available in 6XL | ⓘ Style/color now available as Fashion | Fashion colors are not reorderable. All prints are fashion unless otherwise noted.

UNISEX

DK619

Unisex V-Neck Top

**Sizes:**

XXS-5XL (28")

- Unisex fit
- Twill tape at neckline
- Two front patch pockets
- Back yoke seam
- Signature logo twill tape inside back neck
- Side vents

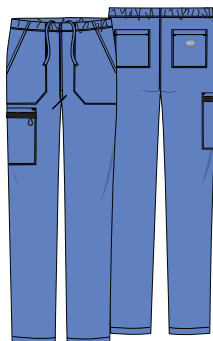
Fabric:

77 Poly/20 Rayon/3 Spandex Twill

Available Colors:

Black BAPS	Ciel CIPS	Galaxy Blue GAB
Hunter Green HNPS	Navy NYPS	Pewter PWPS
Royal RYPS	Wine WNPS	

DK019/S/T

Unisex Natural Rise
Drawstring Pant**Sizes:**

XXS-5XL (31")

[S] XXS-3XL (28½")

[T] XS-2XL (34")

- Unisex fit
- Interior elastic waistband with inside drawstring
- Five pockets: two front pockets, cargo pocket, two back pockets
- Twill tape utility loops with bungee badge ID loop on cargo pocket
- Tapered leg, 15" opening

Fabric:

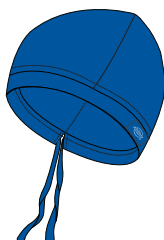
77 Poly/20 Rayon/3 Spandex Twill

Available Colors:

Black BAPS	Ciel CIPS	Galaxy Blue GAB
Hunter Green HNPS	Navy NYPS	Pewter PWPS
Royal RYPS	Wine WNPS	

DK502

Unisex Scrubs Hat

**Sizes:**

OS

- Unisex fit
- Adjustable drawstring
- Hidden terrycloth band for comfort
- Signature tonal woven label

Fabric:

95 Poly/5 Spandex Poplin

Available Colors:

Black BAPS	Navy NYPS	Pewter PWPS
Royal RYPS		



DK619
Unisex V-Neck Top
in Wine
(WNPS)

DK019
Unisex Natural Rise
Drawstring Pant
in Wine
(WNPS)

DK615
V-Neck Top
in Berry Heather
(BYHE)

DK005
Natural Rise
Pull-on Cargo
Pant in Berry
Heather (BYHE)



DK615 V-Neck Top



Sizes:
XXS-5XL (26")

- Contemporary fit
- Twill tape at neckline
- Two patch pockets
- Pen slot with utility twill tape
- Instrument loops inside left pocket
- Shoulder yokes
- Instrument loops with snap at right shoulder
- Back princess lines
- Signature tonal woven label
- Signature logo twill tape at the back neck
- Side vents

Fabric:
95 Poly/5 Spandex Poplin

Available Colors:

Berry Heather BYHE* ¹	Black BAPS*	Caribbean Blue CAPS*
Ciel CIPS	Eggplant EGG	Espresso ESP
Galaxy Blue GAB	Grape GRP	Grey GRY
Hot Pink HPKZ	Hunter Green HNPS	Marine Heather MRHE* ¹
Navy NYPS*	New Dawn NWDA*	Olive OLV
Pewter PWPS*	Red RED	Royal RYPS*
Teal Blue TLPS	Turquoise TRQ	Wine WNPS*
White WTPS*		

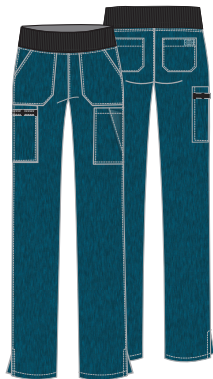
*95 Polyester/5 Spandex Heathered Poplin

EDS ESSENTIALS

WOMEN'S

DK005/P/T

Natural Rise
Pull-on Cargo Pant

**Sizes:**

XXS-5XL (30")
[P] XXS-3XL (27½")
[T] XS-2XL (33")

- Contemporary fit
- Rib-knit covered elastic waistband
- Seven pockets: two front patch pockets, two cargo pockets, accessory pocket, two back patch pockets
- Utility twill tape instrument loops on right cargo pocket
- Side vents
- Tapered leg, 15" opening

Fabric:

95 Poly/5 Spandex Poplin

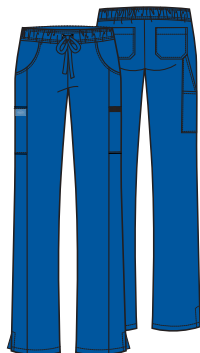
Available Colors:

Berry Heather BYHE*1	Black BAPS	Caribbean Blue CAPS
Ciel CIPS	Eggplant EGG	Espresso ESP
Galaxy Blue GAB	Grape GRP	Grey GRY
Hot Pink HPKZ	Hunter Green HNPS	Marine Heather MRHE*1
Navy NYPS	Olive OLV	Pewter PWPS
Red RED	Royal RYPS	Teal Blue TLPS
Turquoise TRQ	Wine WNPS	White WTPS

*95 Polyester/5 Spandex Heathered Poplin

DK010/P/T

Mid Rise Drawstring Pant

**Sizes:**

XXS-5XL (30½")
[P] XXS-3XL (28")
[T] XS-2XL (33½")

- Contemporary fit
- Elastic waistband with drawstring
- Seven pockets: two front pockets, two cargo pockets, accessory pocket, and two back pockets
- Side vents
- Straight leg, 17" opening

Fabric:

95 Poly/5 Spandex Poplin

Available Colors:

Black BAPS†	Caribbean Blue CAPS†	Ciel CIPS
Eggplant EGG	Espresso ESP	Galaxy Blue GAB
Grape GRP	Grey GRY	Hot Pink HPKZ
Hunter Green HNPS	Navy NYPS†	Pewter PWPS†
Red RED	Royal RYPS†	Teal Blue TLPS
Wine WNPS†	White WTPS†	

DK005

Natural Rise
Pull-on Cargo
Pant in Marine
Heather (MRHE)



WOMEN'S

DK625

Mock Wrap Top



Sizes:

XXS-5XL (26")

- Contemporary fit
- Shoulder yokes
- Instrument loops at right shoulder
- Two patch pockets
- Pen slot with utility twill tape
- Instrument loops and bungee loop at left pocket
- Signature tonal woven label
- Signature logo twill tape inside back neck
- Side vents

Fabric:

95 Poly/5 Spandex Poplin

Available Colors:

Black BAPS	Caribbean Blue CAPS	Ciel CIPS
Galaxy Blue GAB	Hunter Green HNPS	Navy NYPS
Pewter PWPS	Royal RYPS	Teal Blue TLPS
Wine WNPS	White WTPS	

DK305

Snap Front Warm-up Jacket



Sizes:

XXS-5XL (27")

- Contemporary fit
- Shoulder yokes and back princess lines
- Instrument loops with snap at right shoulder
- Two patch pockets
- Pen slot with utility twill tape
- Signature tonal woven label
- Signature logo twill tape inside back neck
- Rib-knit cuffs

Fabric:

95 Poly/5 Spandex Poplin

Available Colors:

Black BAPS	Caribbean Blue CAPS	Ciel CIPS
Galaxy Blue GAB	Hunter Green HNPS	Navy NYPS
Pewter PWPS	Royal RYPS	Teal Blue TLPS
Wine WNPS	White WTPS	

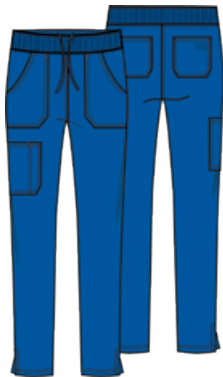


DK625
Mock Wrap Top
in Royal
(RYPS)

DK090
Mid Rise
Pull-on Pant
in Royal
(RYPS)

DK090/P/T

Mid Rise Pull-on Pant

**sizes:**

XXS-5XL (30")

[P] XXS-3XL (27½")

[T] XS-2XL (33")

- Contemporary fit
- Rib-knit covered elastic waistband with an inside drawstring
- Five pockets: two front pockets, cargo pocket with a pen slot, and two back pockets
- Side vents
- Tapered leg, 12" opening

Fabric:

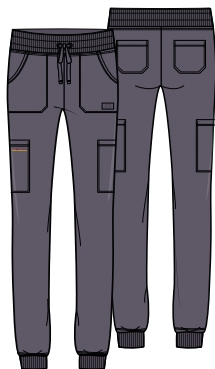
95 Poly/5 Spandex Poplin

Available Colors:

Black BAPS	Caribbean Blue CAPS	Ciel CIPS
New Dawn NWDA*	Navy NYPS	Pewter PWPS
Royal RYPS	Wine WNPS	

DK065/P/T

Mid Rise Jogger

**Sizes:**

XXS-5XL (29")

[P] XXS-3XL (26½")

[T] XS-2XL (32")

- Contemporary fit
- Rib-knit covered elastic waistband with drawstring
- Six pockets: two front patch pockets, two cargo pockets, two back pockets
- Logo tape instrument loops inside right cargo pocket
- Rib-knit cuffs
- Tapered leg, 12" opening

Fabric:

95 Poly/5 Spandex Poplin

Available Colors:

Black BAPS	Ciel CIPS	Navy NYPS
Pewter PWPS	Royal RYPS	Wine WNPS

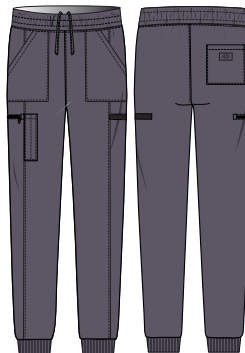
DK090Mid Rise
Pull-on Pant
in Pewter
(PWPS)



DK223
Mid Rise Jogger
in Pewter
(PWPS)

MEN'S

DK223/S/T Mid Rise Jogger



Sizes:
XS-5XL (30½")
[S] XS-3XL (28")
[T] S-3XL (33½")

- Men's fit
- Elastic waist with inside drawstring
- Five pockets: two front pockets, utility pocket, zip cargo pocket, back pocket
- Twill tape instrument loops
- Front leg seams
- Rib-knit cuffs
- Tapered leg, 10½" opening

Fabric:
95 Poly/5 Spandex Poplin

Available Colors:

Black BAPS	Ciel CIPS	Navy NYPS
Pewter PWPS	Royal RYPS	Wine WNPS

DK635 V-Neck Top



Sizes:
XS-5XL (28")

- Men's fit
- Chest pocket
- Pen slot with utility twill tape
- Utility twill tape instrument loops on left sleeve
- Back yoke and center back seam
- Signature tonal woven label
- Signature logo twill tape inside back neck
- Side vents

Fabric:
95 Poly/5 Spandex Poplin

Available Colors:

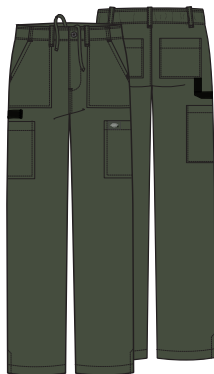
Black BAPS†	Caribbean Blue CAPS†	Ciel CIPS
Eggplant EGG	Espresso ESP	Galaxy Blue GAB
Grape GRP	Grey GRY	Hunter Green HNPS
Navy NYPS†	Olive OLV	Pewter PWPS†
Red RED	Royal RYPS†	Teal Blue TLPS
Wine WNPS†	White WTPS†	

Indicates: * Fashion Colors | † Available in 6XL |  Style/color now available as Fashion
Fashion colors are not reorderable. All prints are fashion unless otherwise noted.

MEN'S

DK015/S/T

Natural Rise Drawstring Pant

**Sizes:**

XS-5XL (32")

[S] XS-3XL (29½")

[T] S-3XL (35")

- Men's fit
- Back elastic waistband with inside drawstring
- Zip fly with button closure
- Five belt loops
- Six pockets: two front patch pockets, two cargo pockets, two back pockets
- Utility twill tape instrument loop
- Signature tonal woven label
- Side vents
- Straight leg, 17" opening

Fabric:

95 Poly/5 Spandex Poplin

Available Colors:

Black BAPS	Caribbean Blue CAPS	Ciel CIPS
Eggplant EGG	Espresso ESP	Galaxy Blue GAB
Grape GRP	Grey GRY	Hunter Green HNPS
Navy NYPS	Olive OLV	Pewter PWPS
Red RED	Royal RYPS	Teal Blue TLPS
Wine WNPS	White WTPS	

DK635

V-Neck Top
in Olive
(OLV)

DK645

V-Neck Top

**Sizes:**

XS-5XL (29")

- Men's fit
- Four pockets: patch pockets, chest pocket with pen slot, accessory pocket
- Utility twill tape instrument loops on right pocket
- Signature tonal woven label
- Signature logo twill tape inside back neck
- Side vents

Fabric:

95 Poly/5 Spandex Poplin

Available Colors:

Black BAPS	Caribbean Blue CAPS	Ciel CIPS
Galaxy Blue GAB	Hunter Green HNPS	Navy NYPS
Pewter PWPS	Royal RYPS	Wine WNPS
White WTPS		

DK925

Polo Top

**Sizes:**

XS-5XL (27")

- Men's fit
- Collared top
- Three-button placket
- Chest pocket
- Shoulder and back yokes
- Signature tonal woven label
- Signature logo twill tape inside back neck
- Side vents

Fabric:

95 Poly/5 Spandex Poplin

Available Colors:

Black BAPS	Navy NYPS	Pewter PWPS
Royal RYPS		

EDS ESSENTIALS
COLOR AND
STYLE MATRIX

All styles and colors featured are reorderable, unless otherwise noted. Styles are made from Poly/Spandex Poplin. Center back lengths and inseams are noted in parentheses.

WOMEN'S



DK615

V-Neck Top
XXS-5XL (26")



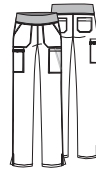
DK625

Mock Wrap Top
XXS-5XL (26")



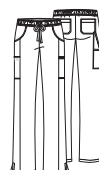
DK305

Snap Front
Warm-up Jacket
XXS-5XL (27")



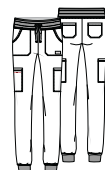
DK005/P/T

Natural Rise
Pull-on Cargo Pant
XXS-5XL (30")
[P] XXS-3XL (27½")
[T] XS-2XL (33")



DK010/P/T

Mid Rise
Drawstring Pant
XXS-5XL (30½")
[P] XXS-3XL (28")
[T] XS-2XL (33½")

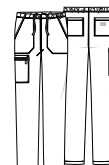
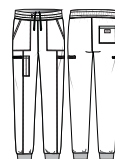
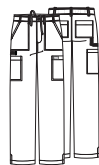
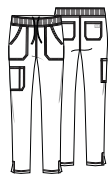


DK065/P/T

Mid Rise Jogger
XXS-5XL (29")
[P] XXS-3XL (26½")
[T] XS-2XL (32")

Black	BAPS	XXS-6XL				XXS-6XL	
Navy	NYPS	XXS-6XL				XXS-6XL	
Pewter	PWPS	XXS-6XL				XXS-6XL	
Royal	RYPS	XXS-6XL				XXS-6XL	
Wine	WNPS	XXS-6XL				XXS-6XL	
Caribbean Blue	CAPS	XXS-6XL				XXS-6XL	style not available in this color
Ciel	CIPS	XXS-6XL				XXS-6XL	
White	WTPS	XXS-6XL				XXS-6XL	style not available in this color
Teal Blue	TLPS						style not available in this color
Hunter Green	HNPS						style not available in this color
Galaxy Blue	GAB						style not available in this color
Hot Pink	HPKZ		style not available in this color	style not available in this color			style not available in this color
Eggplant	EGG		style not available in this color	style not available in this color			style not available in this color
Grape	GRP		style not available in this color	style not available in this color			style not available in this color
Red	RED		style not available in this color	style not available in this color			style not available in this color
Olive	OLV		style not available in this color	style not available in this color		style not available in this color	style not available in this color
Grey	GRY		style not available in this color	style not available in this color			style not available in this color
Turquoise	TRQ		style not available in this color	style not available in this color			style not available in this color
Espresso	ESP		style not available in this color	style not available in this color			style not available in this color
Berry Heather*	BYHE*	XS-3XL	style not available in this color	style not available in this color	XS-3XL, [P] XS-2XL	style not available in this color	style not available in this color
Marine Heather*	MRHE*	XS-3XL	style not available in this color	style not available in this color	XS-3XL, [P] XS-2XL	style not available in this color	style not available in this color
New! New Dawn*	NWDA*	XS-3XL	style not available in this color	style not available in this color	style not available in this color	style not available in this color	style not available in this color

UNISEX



DK019/S/T

Unisex Natural Rise
Drawstring Pant
XXS-5XL (31")
[S] XXS-3XL (28½")
[T] XS-2XL (34")

[illegible]

Scrubs Hat
OS

Roval RYPS

DK880
V-Neck Top With
Rib-Knit Panels
in Ciel (CIWZ)

DK125
Mid Rise Pull-on
Cargo Pant in
Ciel (CIWZ)



SIGNATURE QUALITY AND STYLE.

This popular collection, in sizes up to 5XL, reflects the commitment to comfort, durability, performance, and fit for which Dickies Medical is known.

WOMEN'S

DK880 V-Neck Top With Rib-Knit Panels



Sizes:
XXS-5XL (26")

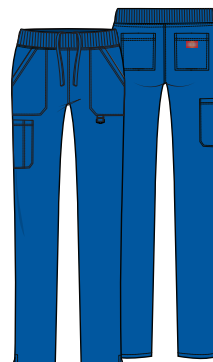
- Contemporary fit
- Rib-knit neckband inset
- Four pockets: patch pockets, layered accessory pocket, zipper front pocket
- Princess lines
- Rib-knit back side panels
- Side vents

Fabric:
Brushed 55 Cotton/45 Poly Poplin

Available Colors:

Black BLWZ	Ciel CIWZ	Navy NVWZ
Pewter PTWZ	Royal ROWZ	

DK125/P/T Mid Rise Pull-on Cargo Pant



Sizes:
XXS-5XL (30½")
[P] XXS-3XL (28")
[T] XS-2XL (33½")

- Contemporary fit
- Rib-knit covered elastic waistband with adjustable inside drawstring
- Five pockets: patch pockets, cargo pocket with pen slot, back pockets
- D-ring on left front patch pocket
- Side vents
- Tapered leg, 15" opening

Fabric:
Brushed 55 Cotton/45 Poly Poplin

Available Colors:

Black BLWZ	Ciel CIWZ	Navy NVWZ
Pewter PTWZ	Royal ROWZ	

Indicates: * Fashion Colors | † Available in 6XL | F Style/color now available as Fashion
Fashion colors are not reorderable. All prints are Fashion unless otherwise noted.

86806
Mock Wrap Top



- Sizes:**
XXS-3XL (25")
- Modern Classic fit
 - Patch pockets with instrument loop
 - Red knit interior pocket (White for White)
 - Empire waist
 - Logo twill tape inside back neck
 - Side vents

Fabric:
Brushed 55 Cotton/45 Poly Poplin

Available Colors:

Black BLWZ	Caribbean Blue CAWZ	Ciel CIWZ
Eggplant EGWZ	Galaxy Blue GBWZ	Grey GRWZ
Hot Pink HPKZ	Hunter HUWZ	Dark Khaki KHIZ
Navy NVWZ	Olive OLWZ	Pewter PTWZ
Red REWZ	Royal ROWZ	Teal Blue TLWZ
White WHWZ	Wine WIWZ	

85906
V-Neck Top



- Sizes:**
XXS-3XL (26")
- Contemporary fit
 - Six pockets: double patch pockets, accessory pockets
 - Instrument loop on right pocket
 - Back princess lines
 - Logo twill tape inside back neck
 - Side vents

Fabric:
Brushed 55 Cotton/45 Poly Poplin

Available Colors:

Black BLWZ	Caribbean Blue CAWZ	Ciel CIWZ
Eggplant EGWZ	Galaxy Blue GBWZ	Grey GRWZ
Hot Pink HPKZ	Hunter HUWZ	Dark Khaki KHIZ
Navy NVWZ	Pewter PTWZ	Red REWZ
Royal ROWZ	Teal Blue TLWZ	White WHWZ
Wine WIWZ		

85820
Mock Wrap Top



- Sizes:**
XXS-3XL (26")
- Contemporary fit
 - Empire waist
 - Five pockets: double patch pockets, pen slot, accessory pocket
 - Instrument loop on left pocket
 - Front princess lines
 - Logo twill tape inside back neck
 - Side vents

Fabric:
Brushed 55 Cotton/45 Poly Poplin

Available Colors:

Black BLWZ	Ciel CIWZ	Navy NVWZ
Pewter PTWZ	Teal Blue TLWZ	White WHWZ

86706
V-Neck Top



- Sizes:**
XXS-5XL (27")
- Modern Classic fit
 - Two patch pockets
 - Red knit interior pocket (White for White)
 - Logo twill tape inside back neck
 - Side vents

Fabric:
Brushed 55 Cotton/45 Poly Poplin

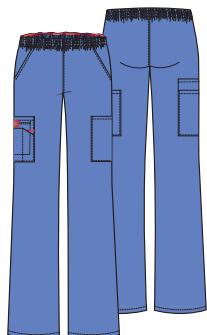
Available Colors:

Black BLWZ	Caribbean Blue CAWZ	Ciel CIWZ
Eggplant EGWZ	Espresso ESP	Galaxy Blue GBWZ
Grey GRWZ	Hot Pink HPKZ	Hunter HUWZ
Dark Khaki KHIZ	Navy NVWZ	Olive OLWZ
Pewter PTWZ	Red REWZ	Royal ROWZ
Teal Blue TLWZ	White WHWZ	Wine WIWZ

WOMEN'S (CONT.)

86106/P/T

Natural Rise Pull-on Cargo Pant



Sizes:

XXS-5XL (30½")
[P] XXS-2XL (28")
[T] XS-2XL (33½")

- Modern Classic fit
- All-around elastic waistband
- Five pockets: slash pockets, cargo pockets, Red knit interior pocket (White for White)
- Instrument loop
- Tapered leg, 16½" opening

Fabric:

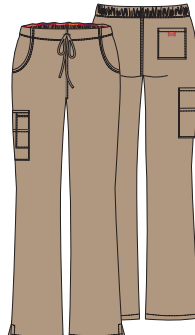
Brushed 55 Cotton/45 Poly Poplin

Available Colors:

Black BLWZ	Caribbean Blue CAWZ	Ciel CIWZ
Eggplant EGWZ	Galaxy Blue GBWZ	Grey GRWZ
Hot Pink HPKZ	Hunter HUWZ	Dark Khaki KHIZ
Navy NVWZ	Olive OLWZ	Pewter PTWZ
Red REWZ	Royal ROWZ	Teal Blue TLWZ
White WHWZ	Wine WIWZ	

86206/P/T

Mid Rise Drawstring Cargo Pant



Sizes:

XXS-5XL (30½")
[P] XXS-2XL (28")
[T] XS-2XL (33½")

- Modern Classic fit
- Back elastic waistband with drawstring
- Five pockets: front pockets, cargo pocket, back pocket, Red knit interior pocket (White for White)
- Side vents
- Moderate flare leg, 19½" opening

Fabric:

Brushed 55 Cotton/45 Poly Poplin

Available Colors:

Black BLWZ	Caribbean Blue CAWZ	Ciel CIWZ
Eggplant EGWZ	Espresso ESP	Galaxy Blue GBWZ
Grey GRWZ	Hot Pink HPKZ	Hunter HUWZ
Dark Khaki KHIZ	Navy NVWZ	Pewter PTWZ
Red REWZ	Royal ROWZ	Teal Blue TLWZ
White WHWZ	Wine WIWZ	

86306

Snap Front Warm-up Jacket



Sizes:

XS-5XL (28½")

- Modern Classic fit
- Six pockets: double patch pockets, pen slot, accessory pocket, Red knit interior pocket (White for White)
- Instrument loop on left pocket
- Back yoke
- Knit cuffs
- Side vents

Fabric:

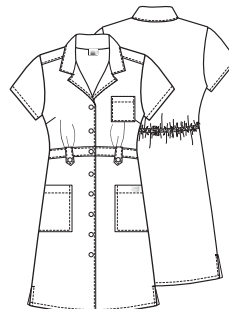
Brushed 55 Cotton/45 Poly Poplin

Available Colors:

Black BLWZ	Galaxy Blue GBWZ	Navy NVWZ
Pewter PTWZ	Royal ROWZ	White WHWZ

84500

Button Front Dress



Sizes:

XS-3XL (38")

- Modern Classic fit
- Three pockets: chest pocket, patch pockets
- Front button-tab waistband
- Back elastic waist
- Notched lapels
- Side vents

Fabric:

Brushed 60 Cotton/40 Poly Twill

Available Color:

White DHWZ

UNISEX

83706
Unisex V-Neck Top



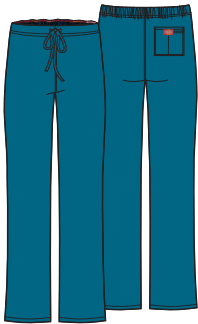
- Sizes:**
XS-5XL (28")
- Unisex fit
 - Chest pocket
 - Bartacked pen slot
 - Logo twill tape inside back neck
 - Side vents

Fabric:
Brushed 55 Cotton/45 Poly Poplin

Available Colors:

Black BLWZ	Caribbean Blue CAWZ	Ciel CIWZ
Eggplant EGWZ	Espresso ESP	Galaxy Blue GBWZ
Grey GRWZ	Hot Pink HPKZ	Hunter HUWZ
Dark Khaki KHIZ	Navy NVWZ	Olive OLWZ
Pewter PTWZ	Red REWZ	Royal ROWZ
Teal Blue TLWZ	White WHWZ	Wine WIWZ

83006/S/T
Natural Rise Drawstring Pant



- Sizes:**
XS-5XL (31")
[S] XS-2XL (28½")
[T] XS-2XL (34")
- Unisex fit
 - Back elastic waistband with drawstring
 - Back pocket with Galaxy Blue knit interior pocket (White for White)
 - Straight leg, 20" opening

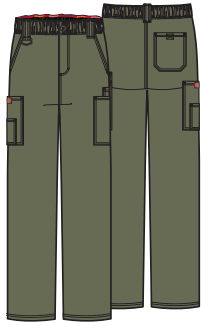
Fabric:
Brushed 55 Cotton/45 Poly Poplin

Available Colors:

Black BLWZ	Caribbean Blue CAWZ	Ciel CIWZ
Eggplant EGWZ	Espresso ESP	Galaxy Blue GBWZ
Grey GRWZ	Hot Pink HPKZ	Hunter HUWZ
Dark Khaki KHIZ	Navy NVWZ	Olive OLWZ
Pewter PTWZ	Red REWZ	Royal ROWZ
Teal Blue TLWZ	White WHWZ	Wine WIWZ

MEN'S

81006/T
Natural Rise Zip Fly Pull-on Pant



- Sizes:**
S-5XL (31½")
[T] S-3XL (34½")
- Men's fit
 - All-around elastic waistband with inside drawstring
 - Zip fly with button closure
 - Seven pockets: slash pockets, cargo pockets, back pocket with hook-and-loop closure
 - Three belt loops
 - D-ring at right belt loop
 - Straight leg, 20" opening

Fabric:
Brushed 55 Cotton/45 Poly Poplin

Available Colors:

Black BLWZ	Caribbean Blue CAWZ	Ciel CIWZ
Espresso ESP	Grey GRWZ	Hunter HUWZ
Dark Khaki KHIZ	Navy NVWZ	Olive OLWZ
Pewter PTWZ	Royal ROWZ	White WHWZ
Wine WIWZ		

81906
V-Neck Top



- Sizes:**
S-5XL (29")
- Men's fit
 - Five pockets: patch pockets, double chest pocket with self-strap and D-ring, Galaxy Blue knit interior pocket (White for White)
 - Shoulder and back yokes
 - Center back seam
 - Side vents

Fabric:
Brushed 55 Cotton/45 Poly Poplin

Available Colors:

Black BLWZ	Caribbean Blue CAWZ	Ciel CIWZ
Espresso ESP	Grey GRWZ	Hunter HUWZ
Dark Khaki KHIZ	Navy NVWZ	Olive OLWZ
Pewter PTWZ	Royal ROWZ	White WHWZ
Wine WIWZ		

EDS SIGNATURE
COLOR AND
STYLE MATRIX

All styles and colors featured are reorderable, unless otherwise noted. Styles are made from Brushed Cotton/Poly Poplin. Center back lengths and inseams are noted in parentheses.

WOMEN'S



86706	85906	86806	86306	85820	DK880
V-Neck Top XXS-5XL (27") Modern Classic Fit	V-Neck Top XXS-3XL (26") Contemporary Fit	Mock Wrap Top XXS-3XL (25") Modern Classic Fit	Snap Front Warm-up Jacket XS-5XL (28½") Modern Classic Fit	Mock Wrap Top XXS-3XL (26") Contemporary Fit	V-Neck Top With Rib-Knit Panels XXS-5XL (26") Contemporary Fit

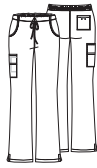
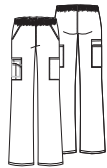
Black	BLWZ					
Navy	NVWZ					
Pewter	PTWZ					
Caribbean Blue	CAWZ			style not available in this color	style not available in this color	style not available in this color
Wine	WIWZ			style not available in this color	style not available in this color	style not available in this color
Royal	ROWZ				style not available in this color	
Galaxy Blue	GBWZ				style not available in this color	style not available in this color
Ciel	CIWZ			style not available in this color		
Dark Khaki	KHIZ			style not available in this color	style not available in this color	style not available in this color
White	WHWZ					style not available in this color
Grey	GRWZ			style not available in this color	style not available in this color	style not available in this color
Eggplant	EGWZ			style not available in this color	style not available in this color	style not available in this color
Teal Blue	TLWZ			style not available in this color		style not available in this color
Hunter Green	HUWZ			style not available in this color	style not available in this color	style not available in this color
Olive	OLWZ	style not available in this color		style not available in this color	style not available in this color	style not available in this color
Red	REWZ			style not available in this color	style not available in this color	style not available in this color
Hot Pink	HPKZ			style not available in this color	style not available in this color	style not available in this color
Espresso	ESP	style not available in this color	style not available in this color	style not available in this color	style not available in this color	style not available in this color

DRESS



84500
Button Front Dress XS-3XL (38")
DWHZ

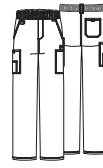
WOMEN'S



UNISEX



MEN'S

**86106/P/T**

Natural Rise
Pull-on
Cargo Pant
XXS-5XL (30½")
[P] XXS-2XL (28")
[T] XS-2XL (33½")
Modern
Classic Fit

86206/P/T

Mid Rise
Drawstring
Cargo Pant
XXS-5XL (30½")
[P] XXS-2XL (28")
[T] XS-2XL (33½")
Modern
Classic Fit

DK125/P/T

Mid Rise
Pull-on
Cargo Pant
XXS-5XL (30½")
[P] XXS-3XL (28")
[T] XS-2XL (33½")
Contemporary Fit

83706

V-Neck Top
XS-5XL (28")

83006/S/T

Natural Rise
Drawstring Pant
XS-5XL (31")
[S] XS-2XL (28½")
[T] XS-2XL (34")

81006/T

Natural Rise
Zip Fly
Pull-on Pant
S-5XL (31½")
[T] S-3XL (34½")

81906

V-Neck Top
S-5XL (29")

		style not available in this color				
		style not available in this color				
No Tall		style not available in this color			style not available in this color	style not available in this color
		style not available in this color		No Short or Tall		
		style not available in this color				
No Tall	[T] S-2XL	style not available in this color		No Short or Tall		
		style not available in this color		No Short or Tall	style not available in this color	style not available in this color
No Tall		style not available in this color			style not available in this color	style not available in this color
No Tall		style not available in this color		No Short or Tall		
No Tall	style not available in this color	style not available in this color		No Short or Tall		
No Tall		style not available in this color		No Short or Tall	style not available in this color	style not available in this color
No Tall		style not available in this color		No Short or Tall	style not available in this color	style not available in this color
style not available in this color		style not available in this color				



DK513
Floral Breeze
Scrubs Hat
(FBEZ)

DK852
Floral Breeze
V-Neck
(FBEZ)

**EDS
PRINTS**

STYLE HIGHLIGHTS

Indicates: * Fashion Colors | † Available in 6XL | F Style/color now available as Fashion | Fashion colors are not reorderable. All prints are fashion unless otherwise noted.

WORK HARD, PLAY HARD.

From beautiful to whimsical to seasonal, fun-to-wear EDS Prints add pop to any scrubs wardrobe.

NEW! WOMEN'S SPRING '22 PRINTS

DK700

Pawsitive Vibes
(PWVB)



Sizes:
XS-3XL (26")

- Contemporary fit
- Two patch pockets
- Back darts
- Rounded hem
- Side vents

Fabric:
97 Cotton/3 Spandex Poplin

Contrast:
None

Coordinating Colors:

Black BLWZ	Grey GRWZ	Hot Pink HPKZ
New Dawn NWDA*	Pewter PTWZ	Teal Blue TLWZ
Turquoise TQWZ	White WHWZ	

DK306

Pawsitive Vibes
(PWVB)



Sizes:
XS-3XL (27")

- Contemporary fit
- Snap front closure
- Two patch pockets, right with pen slot
- Shoulder yokes
- Instrument loops with snap at right shoulder
- Back princess seams
- Rib-knit cuffs

Fabric:
97 Cotton/3 Spandex Poplin

Contrast:
Pewter cuffs

Coordinating Colors:

Black BLWZ	Grey GRWZ	Hot Pink HPKZ
New Dawn NWDA*	Pewter PTWZ	Teal Blue TLWZ
Turquoise TQWZ	White WHWZ	

DK514

Pawsitive Vibes
(PWVB)



Sizes:
OS

- Unisex fit
- Front pleats for fullness
- Buttons by the ears to hold any ear-loop-style face covering
- Interior terry-cloth sweatband
- Back elastic and adjustable tie

Fabric:
97 Cotton/3 Spandex Poplin

Contrast:
Pewter sweatband

Coordinating Colors:

Black BLWZ	Grey GRWZ	Hot Pink HPKZ
New Dawn NWDA*	Pewter PTWZ	Teal Blue TLWZ
Turquoise TQWZ	White WHWZ	

DK616

Tropic Blooms
(TRBM)



Sizes:
XS-3XL (26")

- Contemporary fit
- Two patch pockets, right with pen slot
- Shoulder yokes
- Instrument loops with snap at right shoulder
- Back princess seams
- Side vents

Fabric:
92 Poly/8 Spandex Poplin

Contrast:
None

Coordinating Colors:

Black BLWZ	Chilled Berry CLBR*	Galaxy Blue GBWZ
New Dawn NWDA*	Turquoise TQWZ	White WHWZ

DK704

Be Kind To Each Otter
(BIEO)



Sizes:
XS-3XL (27")

- Modern Classic fit
- Two patch pockets
- Side vents

Fabric:
97 Cotton/3 Spandex Poplin

Contrast:
None

Coordinating Colors:

Black BLWZ	Hot Pink HPKZ	Navy NVWZ
Pewter PTWZ	Royal ROWZ	White WHWZ

NEW! WOMEN'S SPRING '22 PRINTS (CONT.)

DK616
Daisy Duty
(DATY)



Sizes:
XS-3XL (26")

- Contemporary fit
- Two patch pockets, right with pen slot
- Shoulder yokes
- Instrument loops with snap at right shoulder
- Back princess seams
- Side vents

Fabric:
92 Poly/8 Spandex Poplin

Contrast:
None

Coordinating Colors:

Black BLWZ	Chilled Berry CLBR*	New Dawn NWDA*
Pewter PTWZ	White WHWZ	

DK513
Daisy Duty
(DATY)



Sizes:
OS

- Unisex fit
- Snap tabs by the ears to hold any ear-loop-style face covering
- Contoured seaming
- Interior terry-cloth sweatband
- Back elastic and adjustable tie

Fabric:
92 Poly/8 Spandex Poplin

Contrast:
Pewter sweatband

Coordinating Colors:

Black BLWZ	Chilled Berry CLBR*	New Dawn NWDA*
Pewter PTWZ	White WHWZ	

DK718
Love U Dots
(LVDT)



Sizes:
XXS-3XL (26½")

- Modern Classic fit
- Stylized neckline with piping detail
- Front yoke
- Two patch pockets
- Back darts
- Side vents

Fabric:
91 Poly/9 Spandex Poplin

Contrast:
Black piping

Coordinating Colors:

Black BLWZ	Chilled Berry CLBR*	New Dawn NWDA*
Royal ROWZ	Teal Blue TLWZ	Turquoise TQWZ
White WHWZ		

DK309
Love U Dots
(LVDT)



Sizes:
XXS-3XL (27")

- Contemporary fit
- Snap front closure
- Two patch pockets, right with pen slot
- Shoulder yokes
- Instrument loops with snap at right shoulder
- Back princess seams
- Rib-knit cuffs

Fabric:
91 Poly/9 Spandex Poplin

Contrast:
Black cuffs

Coordinating Colors:

Black BLWZ	Chilled Berry CLBR*	New Dawn NWDA*
Royal ROWZ	Teal Blue TLWZ	Turquoise TQWZ
White WHWZ		

DK513
Love U Dots
(LVDT)



Sizes:
OS

- Unisex fit
- Snap tabs by the ears to hold any ear-loop-style face covering
- Contoured seaming
- Interior terry-cloth sweatband
- Back elastic and adjustable tie

Fabric:
91 Poly/9 Spandex Poplin

Contrast:
Pewter sweatband

Coordinating Colors:

Black BLWZ	Chilled Berry CLBR*	New Dawn NWDA*
Royal ROWZ	Teal Blue TLWZ	Turquoise TQWZ
White WHWZ		

NEW! MEN'S SPRING '22 PRINTS

DK700

Camo Flight
[CAF6]

Sizes:

XS-3XL (26")

- Contemporary fit
- Two patch pockets
- Back darts
- Rounded hem
- Side vents

Fabric:

97 Cotton/3 Spandex Poplin

Contrast:

None

Coordinating Colors:

Black BLWZ	Grey GRWZ	Olive OLWZ
Pewter PTWZ	Turquoise TQWZ	White WHWZ

DK725

Doggone Cool
[DGCL]

Sizes:

XS-5XL (28")

- Men's fit
- Chest pocket
- Side vents

Fabric:

97 Cotton/3 Spandex Poplin

Contrast:

None

Coordinating Colors:

Black BLWZ	Navy NVWZ	Royal ROWZ
Teal Blue TLWZ	White WHWZ	

DK852

Garden Buzz
[GNBZ]

Sizes:

XS-3XL (26")

- Contemporary fit
- Two patch pockets
- Back darts
- Rounded hem
- Side vents

Fabric:

91 Poly/9 Spandex Poplin

Contrast:

Black piping

Coordinating Colors:

Black BLWZ	Pool PXOL*	Red RED
Turquoise TQWZ	White WHWZ	

DK513

Doggone Cool
[DGCL]

Sizes:

OS

- Unisex fit
- Snap tabs by the ears to hold any ear-loop-style face covering
- Contoured seaming
- Interior terry-cloth sweatband
- Back elastic and adjustable tie

Fabric:

97 Cotton/3 Spandex Poplin

Contrast:

Pewter sweatband

Coordinating Colors:

Black BLWZ	Navy NVWZ	Royal ROWZ
Teal Blue TLWZ	White WHWZ	

DK717

Safari Spots
[SFSP]

Sizes:

XS-5XL (27")

- Modern Classic fit
- Two patch pockets
- Side vents

Fabric:

91 Poly/9 Spandex Poplin

Contrast:

None

Coordinating Colors:

Hot Pink HPKZ	Navy NVWZ	New Dawn NWDZ*
Teal TLWZ	Turquoise TQWZ	White WHWZ

DK708
Caring Space
V-Neck
(CASR)

DK708
Caring Space
(CASR)



Sizes:
XXS-5XL (27")

- Modern Classic fit
- Basketweave detail at neckline
- Two patch pockets
- Bust darts
- Side vents

Fabric:
97 Cotton/3 Spandex Poplin

Contrast:
None

Coordinating Colors:

Black BLWZ	Ciel CIWZ	Hot Pink HPKZ
Teal Blue TLWZ	White WHWZ	

CLASSIC
FAVORITES

WOMEN'S PRINTS

DK514

Caring Space
[CASR]



Sizes:
OS

- Unisex fit
- Front pleats for fullness
- Buttons by the ears to hold any ear-loop-style face covering
- Interior terry-cloth sweatband
- Back elastic and adjustable tie

Fabric:
97 Cotton/3 Spandex Poplin

Contrast:
Pewter sweatband

Coordinating Colors:

Black BLWZ	Ciel CIWZ	Hot Pink HPKZ
Teal Blue TLWZ	White WHWZ	

DK853

Fading Plaid
[FGPL]



Sizes:
XS-3XL (26")

- Contemporary fit
- Two side angled pockets
- Back darts
- Side vents

Fabric:
91 Poly/9 Spandex Poplin

Contrast:
None

Coordinating Colors:

Black BLWZ	Ciel CIWZ	Navy NVWZ
Royal ROWZ	Teal Blue TLWZ	Turquoise TQWZ
White WHWZ		

DK309

Caring Space
[CASR]



Sizes:
XXS-5XL (27")

- Contemporary fit
- Snap front closure
- Two patch pockets, right with pen slot
- Shoulder yokes
- Instrument loops with snap at right shoulder
- Rib-knit cuffs

Fabric:
97 Cotton/3 Spandex Poplin

Contrast:
Black cuffs

Coordinating Colors:

Black BLWZ	Ciel CIWZ	Hot Pink HPKZ
Teal Blue TLWZ	White WHWZ	

DK617

Udderly Fabulous
[UDDF]



Sizes:
XS-3XL (26")

- Contemporary fit
- Two patch pockets, right with pen slot
- Shoulder yokes
- Instrument loops with snap at right shoulder
- Back princess seams
- Side vents

Fabric:
97 Cotton/3 Spandex Poplin

Contrast:
None

Coordinating Colors:

Black BLWZ	Grey GRWZ	Pewter PTWZ
Red REWZ	Teal Blue TLWZ	White WHWZ

DK717

Pretty Paisley
[PYPL]



Sizes:
XXS-5XL (27")

- Modern Classic fit
- Two patch pockets
- Side vents

Fabric:
94 Poly/6 Spandex Poplin

Contrast:
None

Coordinating Colors:

Black BLWZ	Grey GRWZ	Pewter PTWZ
Techno Pink TEPK*	Teal Blue TLWZ	White WHWZ

DK717

Save The Rainforest
[SVRF]



Sizes:
XS-3XL (27")

- Modern Classic fit
- Two patch pockets
- Side vents

Fabric:
91 Poly/9 Spandex Poplin

Contrast:
None

Coordinating Colors:

Black BLWZ	Pewter PTWZ	Royal ROWZ
Teal Blue TLWZ	White WHWZ	

WOMEN'S PRINTS

DK656 Camo Daisies (CAMD)



Sizes:
XXS-5XL (26")

- Contemporary fit
- Two patch pockets
- Front princess seams with strapping
- Front vents

Fabric:
91 Poly/9 Spandex Poplin

Contrast:
None

Coordinating Colors:

Black BLWZ	Dark Khaki KHIZ	Olive OLWZ
White WHWZ		

DK513 Camo Daisies (CAMD)



Sizes:
OS

- Unisex fit
- Snap tabs by the ears to hold any ear-loop-style face covering
- Contoured seaming
- Interior terry-cloth sweatband
- Back elastic and adjustable tie

Fabric:
91 Poly/9 Spandex Poplin

Contrast:
Pewter sweatband

Coordinating Colors:

Black BLWZ	Dark Khaki KHIZ	Olive OLWZ
White WHWZ		

DK709 Boho Botanicals (BOTO)



Sizes:
XS-5XL (26½")

- Modern Classic fit
- Contrast piping at neckline
- Two patch pockets
- Front yoke
- Back darts
- Side vents

Fabric:
97 Cotton/3 Spandex Poplin

Contrast:
Hot Pink piping

Coordinating Colors:

Black BLWZ	Grey GRWZ	Hot Pink HPKZ
Pewter PTWZ	White WHWZ	

DK306 Boho Botanicals (BOTO)



Sizes:
XS-5XL (27")

- Contemporary fit
- Snap front closure
- Two patch pockets, right with pen slot
- Shoulder yokes
- Instrument loops with snap at right shoulder
- Rib-knit cuffs

Fabric:
97 Cotton/3 Spandex Poplin

Contrast:
Black cuffs

Coordinating Colors:

Black BLWZ	Grey GRWZ	Hot Pink HPKZ
Pewter PTWZ	White WHWZ	

DK514 Boho Botanicals (BOTO)



Sizes:
OS

- Unisex fit
- Front pleats for fullness
- Interior terry-cloth sweatband
- Buttons by the ears to hold any ear-loop-style face covering
- Back elastic and adjustable tie

Fabric:
97 Cotton/3 Spandex Poplin

Contrast:
Pewter sweatband

Coordinating Colors:

Black BLWZ	Grey GRWZ	Hot Pink HPKZ
Pewter PTWZ	White WHWZ	

DK616 Funny Bone (FUNB)



Sizes:
XS-3XL (26")

- Contemporary fit
- Two patch pockets, right with pen slot
- Shoulder yokes
- Instrument loops with snap at right shoulder
- Back princess seams
- Side vents

Fabric:
94 Poly/6 Spandex Poplin

Contrast:
None

Coordinating Colors:

Black BLWZ	Hot Pink HPKZ	Royal ROWZ
Turquoise TQWZ	White WHWZ	

DK852
Floral Breeze
(FBEZ)



Sizes:
XS-3XL (26")

- Contemporary fit
- Two patch pockets
- Back darts
- Rounded hem
- Side vents

Fabric:
91 Poly/9 Spandex Poplin

Contrast:
None

Coordinating Colors:

Hot Pink HPKZ	Hunter HUWZ	Navy NVWZ
Royal ROWZ	White WHWZ	

DK309
Floral Breeze
(FBEZ)



Sizes:
XS-3XL (27")

- Contemporary fit
- Snap front closure
- Two patch pockets, right with pen slot
- Shoulder yokes
- Instrument loops with snap at right shoulder
- Rib-knit cuffs

Fabric:
91 Poly/9 Spandex Poplin

Contrast:
Navy cuffs

Coordinating Colors:

Hot Pink HPKZ	Hunter HUWZ	Navy NVWZ
Royal ROWZ	White WHWZ	

DK513
Floral Breeze
(FBEZ)



Sizes:
OS

- Unisex fit
- Snap tabs by the ears to hold any ear-loop-style face covering
- Contoured seaming
- Interior terry-cloth sweatband
- Back elastic and adjustable tie

Fabric:
91 Poly/9 Spandex Poplin

Contrast:
Pewter sweatband

Coordinating Colors:

Hot Pink HPKZ	Hunter HUWZ	Navy NVWZ
Royal ROWZ	White WHWZ	



DK852
Love And A Cat
V-Neck
(LVAC)

DK852
Love And A Cat
(LVAC)



Sizes:
XS-3XL (26")

- Contemporary fit
- Two patch pockets
- Back darts
- Rounded hem
- Side vents

Fabric:
91 Poly/9 Spandex Poplin

Contrast:
Hot Pink piping

Coordinating Colors:

Black BLWZ	Grey GRWZ	Hot Pink HPKZ
Dark Khaki KHIZ	Pewter PTWZ	White WHWZ

WOMEN'S PRINTS

DK306
Roo-ting For You
(RTFU)



- Sizes:**
XS-3XL (27")
- Contemporary fit
 - Snap front closure
 - Two patch pockets, right with pen slot
 - Shoulder yokes
 - Instrument loops with snap at right shoulder
 - Rib-knit cuffs

Fabric:
97 Cotton/3 Spandex Poplin

Contrast:
Navy cuffs

Coordinating Colors:

Black BLWZ	Dark Khaki KHIZ	Hot Pink HPKZ
Navy NVWZ	Pewter PTWZ	Red REWZ
Teal Blue TLWZ	White WHWZ	

DK704
Roo-ting For You
(RTFU)



Sizes:
XS-3XL (27")

- Modern Classic fit
- Two patch pockets
- Side vents

Fabric:
97 Cotton/3 Spandex Poplin

Contrast:
None

Coordinating Colors:

Black BLWZ	Dark Khaki KHIZ	Hot Pink HPKZ
Navy NVWZ	Pewter PTWZ	Red REWZ
Teal Blue TLWZ	White WHWZ	

HOLIDAY PRINTS
DK709
Howl-oween Friends
(HOFW)



- Sizes:**
XS-3XL (26½")
- Modern Classic fit
 - Contrast piping at neckline
 - Two patch pockets
 - Front yoke
 - Back darts
 - Side vents

Fabric:
97 Cotton/3 Spandex Poplin

Contrast:
Black piping

Coordinating Colors:

Black BLWZ	Dark Khaki KHIZ	Pewter PTWZ
Red REWZ	White WHWZ	



DK709
Howl-oween
Friends V-Neck
(HOFW)

HOLIDAY PRINTS
DK616

 Wish Zoo A Merry Christmas
 (WZMC)

Sizes:
 XS-3XL (26")

- Contemporary fit
- Two patch pockets, right with pen slot
- Shoulder yokes
- Instrument loops with snap at right shoulder
- Back princess seams
- Side vents

Fabric:
 91 Poly/9 Spandex Poplin

Contrast:
 None

Coordinating Colors:

HOLIDAY PRINTS
DK309

 Wish Zoo A Merry Christmas
 (WZMC)

Sizes:
 XS-3XL (27")

- Contemporary fit
- Snap front closure
- Two patch pockets, right with pen slot
- Shoulder yokes
- Instrument loops with snap at right shoulder
- Rib-knit cuffs

Fabric:
 91 Poly/9 Spandex Poplin

Contrast:
 Red cuffs

Coordinating Colors:

HOLIDAY PRINTS
DK721

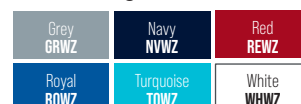
 Peaceful Earth
 (PAET)

Sizes:
 XXS-5XL (25½")

- Contemporary fit
- Four pockets: double patch pockets
- Side vents

Fabric:
 97 Cotton/3 Spandex Poplin

Contrast:
 None

Coordinating Colors:

MEN'S PRINTS
DK725

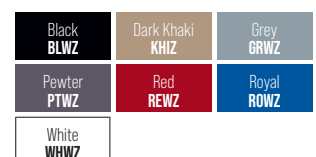
 Hey There Sport
 (HEYS)

Sizes:
 XS-5XL (28")

- Men's fit
- One chest pocket
- Side vents

Fabric:
 97 Cotton/3 Spandex Poplin

Contrast:
 None

Coordinating Colors:

DK725
 Hey There Sport
 V-Neck (HEYS)


GEN FLEX

A NEW GENERATION OF SCRUBS

A modern, contoured silhouette and micro-sanded fabric elevate the classic scrubs look, with features every health professional needs.



STRONG & DURABLE



FUNCTIONAL POCKETS



CONTRAST STITCHING

817455

Youtility V-Neck Top
in D-Navy (NVYZ)



WOMEN'S

817455

Youtility V-Neck Top



Sizes:

XXS-5XL (24½")

- Contemporary fit
- Five pockets: chest pocket with pen slot, patch pockets, sectional pockets
- Instrument loops and bungee ID loop on left pocket
- Contrast topstitching (Tonal for White)
- Side vents

Fabric:

52 Cotton/45 Poly/3 Spandex Twill

Available Colors:

Black BLKZ*	Ceil CBLZ*	Caribbean CRBZ*
Dark Khaki KHIZ*	D-Navy NVYZ*	D-Wine WINZ*
Dark Pewter DKPZ*	Lt. Pewter PEWZ*	Royal RYLZ*
White DWHZ*		

DK800

Youtility V-Neck Top



Sizes:

XXS-5XL (26")

- Contemporary fit
- Two patch pockets
- Instrument loops and bungee ID loop above left pocket
- Contrast topstitching (Tonal for White)
- Side vents

Fabric:

52 Cotton/45 Poly/3 Spandex Twill

Available Colors:

Black BLKZ*	Ceil CBLZ*	Caribbean CRBZ*
Eggplant EGPZ*	D-Navy NVYZ*	D-Wine WINZ*
Lt. Pewter PEWZ*	Royal RYLZ*	White DWHZ*

817355

Mock Wrap Top



Sizes:

XXS-5XL (25½")

- Contemporary fit
- Four pockets: patch pockets, sectional pockets
- Front princess lines
- Snap detail at empire waist
- Contrast topstitching (Tonal for White)
- Side vents

Fabric:

52 Cotton/45 Poly/3 Spandex Twill

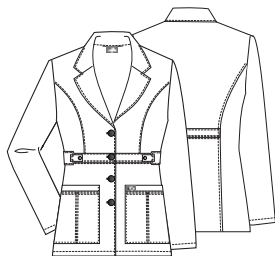
Available Colors:

Black BLKZ*	Ceil CBLZ*	Caribbean CRBZ*
Dark Khaki KHIZ*	D-Navy NVYZ*	D-Wine WINZ*
Dark Pewter DKPZ*	Lt. Pewter PEWZ*	Royal RYLZ*
White DWHZ*		

WOMEN'S (CONT.)

82408

Youtility Button Front Lab Coat

**Sizes:**

XXS-3XL (28")

- Contemporary fit
- Two patch pockets
- Front and back inset belts
- Waist snap detail
- Contrast topstitching (Tonal for White)

Fabric:

52 Cotton/45 Poly/3 Spandex Twill

Available Color:White
DWHZ*

82410

Youtility Button Front Lab Coat

**Sizes:**

XS-3XL (36")

- Contemporary fit
- Notched lapel
- Four pockets: patch pockets, sectional utility pockets
- Bungee ID loop and instrument loops
- Front and back princess lines
- Adjustable side belts

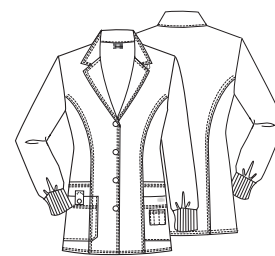
Fabric:

52 Cotton/45 Poly/3 Spandex Twill

Available Color:White
DWHZ*

85400

Youtility Button Front Lab Coat

**Sizes:**

XS-3XL (32")

- Contemporary fit
- Notched lapel
- Bungee ID loop at collar
- Front and back princess lines
- Four patch pockets, right with snap closure
- Triple pen holder on left pocket
- Rib-knit cuffs

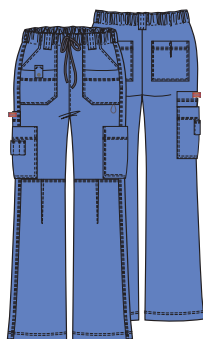
Fabric:

52 Cotton/45 Poly/3 Spandex Twill

Available Color:White
DWHZ*

857455/P/T

Youtility Low Rise Drawstring Cargo Pant

**Sizes:**

XXS-5XL (30½")

[P] XXS-3XL (28")

[T] XS-2XL (33½")

- Contemporary fit
- Elastic waistband with webbed drawstring
- Belt loops
- Nine pockets: rounded pockets, patch pockets, cargo pockets, accessory pocket, back pocket
- Bungee ID loop at left pocket
- Functional snap tab on right pocket
- Triple pen holder on right cargo pocket
- Contrast topstitching (Tonal for White)
- Straight leg, 19½" opening

Fabric:

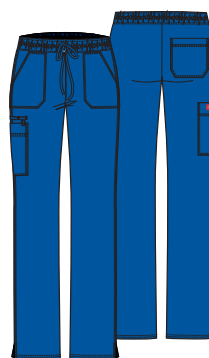
52 Cotton/45 Poly/3 Spandex Twill

Available Colors:

Black BLKZ*	Ceil CBLZ*	Caribbean CRBZ*
Dark Khaki KHIZ*	D-Navy NVYZ*	D-Wine WINZ*
Dark Pewter DKPZ*	Lt. Pewter PEWZ*	Royal RYLZ*
White DWHZ*		

DK100/P/T

Youtility Low Rise Drawstring Pant

**Sizes:**

XXS-5XL (30½")

[P] XXS-3XL (28")

[T] XS-2XL (33½")

- Contemporary fit
- Elastic waistband with drawstring
- Four pockets: patch pockets, cargo pocket, back pocket
- Instrument loops and bungee ID loop above right cargo pocket
- Contrast topstitching (Tonal for White)
- Side vents
- Straight leg, 17" opening

Fabric:

52 Cotton/45 Poly/3 Spandex Twill

Available Colors:

Black BLKZ*	Ceil CBLZ*	Caribbean CRBZ*
Eggplant EGPZ*	D-Navy NVYZ*	D-Wine WINZ*
Lt. Pewter PEWZ*	Royal RYLZ*	White DWHZ*

MEN'S

81722
Youtility V-Neck Top

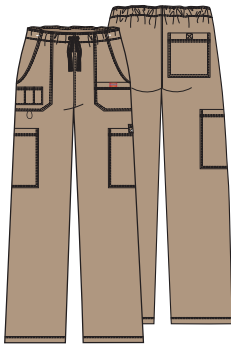


- Sizes:**
XS-5XL (29½")
- Men's fit
 - Four pockets: chest pocket with bungee ID loop, sleeve pocket with self loops, side panel pockets
 - Shoulder and back yokes
 - Contrast topstitching (Tonal for White)
- Fabric:**
52 Cotton/45 Poly/3 Spandex Twill

Available Colors:

Black BLKZ*	Ceil CBLZ*	Caribbean CRBZ*
Dark Khaki KHIZ*	D-Navy NVYZ*	D-Wine WINZ*
Dark Pewter DKPZ*	Lt. Pewter PEWZ*	Royal RYLZ*
White DWHZ*		

81003/T
Youtility Natural Rise
Drawstring Cargo Pant

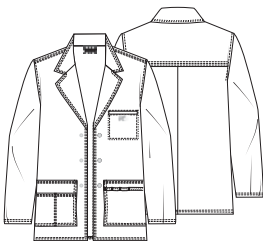


- Sizes:**
XS-5XL (32")
[T] S-3XL (34½")
- Men's fit
 - Elastic waistband with webbed drawstring
 - Seven pockets: patch pockets, cellphone pocket, cargo pockets, back pocket
 - Bungee instrument loop
 - Contrast topstitching (Tonal for White)
 - Straight leg, 21" opening
- Fabric:**
52 Cotton/45 Poly/3 Spandex Twill

Available Colors:

Black BLKZ*	Ceil CBLZ*	Caribbean CRBZ*
Dark Khaki KHIZ*	D-Navy NVYZ*	D-Wine WINZ*
Dark Pewter DKPZ*	Lt. Pewter PEWZ*	Royal RYLZ*
White DWHZ*		

81403
Youtility Snap Front
Lab Coat

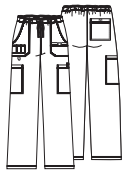


- Sizes:**
XS-3XL (31")
- Men's fit
 - Five pockets: welt chest pocket, patch pockets, sectional pockets
 - Utility loops on left pocket
 - Back yoke
- Fabric:**
52 Cotton/45 Poly/3 Spandex Twill
- Available Color:**
- | |
|----------------|
| White
DWHZ* |
|----------------|

GEN FLEX
**COLOR AND
STYLE MATRIX**
All styles and colors featured are reorderable, unless otherwise noted. Styles are Cotton/ Poly/Spandex Twill, micro-sanded for extra softness. Center back lengths and inseam are noted in parentheses.

Black*	BLKZ*
D-Navy*	NVYZ*
Dickies White*	DWHZ*
Lt. Pewter*	PEWZ*
Royal*	RYLZ*
Ceil*	CBLZ*
D-Wine*	WINZ*
Caribbean Blue*	CRBZ*
Dark Khaki*	KHIZ*
Dark Pewter*	DKPZ*

MEN'S



81003/T
Youtility
Natural Rise
Drawstring
Cargo Pant
XS-5XL (32")
[T] S-3XL (34½")



81722
Youtility
V-Neck Top
XS-5XL (29½")



81403
Youtility
Snap Front
Lab Coat
XS-3XL (31")

		style not available in this color
		style not available in this color
No Tall		
		style not available in this color
		style not available in this color
		style not available in this color
No Tall		style not available in this color
No Tall		style not available in this color
No Tall		style not available in this color
		style not available in this color

GEN FLEX COLOR AND STYLE MATRIX

All styles and colors featured are reorderable, unless otherwise noted. Styles are Cotton/Poly/Spandex Twill, micro-sanded for extra softness. Center back lengths and inseams are noted in parentheses.

WOMEN'S



DK800

Youtility
V-Neck Top
XXS-5XL (26")



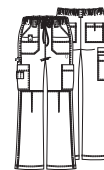
817455

Youtility
V-Neck Top
XXS-5XL (24½")



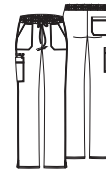
817355

Youtility
Mock Wrap Top
XXS-5XL (25½")



857455/P/T

Youtility Low Rise
Drawstring
Cargo Pant
XXS-5XL (30½")
[P] XXS-3XL (28")
[T] XS-2XL (33½")



DK100/P/T

Youtility Low Rise
Drawstring Pant
XXS-5XL (30½")
[P] XXS-3XL (28")
[T] XS-2XL (33½")

Black*

BLKZ*

D-Navy*

NVYZ*

Dickies White*

DWHZ*

Lt. Pewter*

PEWZ*

Royal*

RYLZ*

Caribbean*

CRBZ*

Ceil*

CBLZ*

D-Wine*

WINZ*

Dark Khaki*

KHIZ*

Dark Pewter*

DKPZ*

Eggplant*

EGPZ*

style not available
in this colorstyle not available
in this colorstyle not available
in this colorstyle not available
in this colorstyle not available
in this colorstyle not available
in this colorstyle not available
in this color

WOMEN'S LAB COATS



82408

Youtility
Button Front
Lab Coat
XXS-3XL (28")



82410

Youtility
Button Front
Lab Coat
XS-3XL (36")



85400

Youtility
Button Front
Lab Coat
XS-3XL (32")

Dickies White*

DWHZ*

Xtreme Stretch.

STYLE + COMFORT

Stretch your working wardrobe with these flattering styles in an easy-care fabric that drapes beautifully and moves with you throughout the day.



4-WAY
STRETCH



RESISTS
WRINKLES



DRAPES
PERFECTLY

85956

Mock Wrap Top
in D-Wine (WINZ)



WOMEN'S

82851

V-Neck Top



Sizes:

XXS-5XL (26")

- Contemporary fit
- Three pockets: patch pockets, cellphone pocket with self tab
- Utility D-ring
- Princess lines
- Logo eyelet trim
- Front vents

Fabric:

75 Poly/21 Rayon/4 Spandex Twill

Available Colors:

Black BLKZ	Caribbean CRBZ	Ceil CBLZ
Eggplant EGPZ	Galaxy Blue GBLZ	Hunter HTRZ
Dark Khaki KHIZ	D-Navy NVYZ	Lt. Pewter PEWZ
Pewter PWT	Royal RYLZ	Teal DTLZ
White DWHZ	D-Wine WINZ	

85956

Mock Wrap Top



Sizes:

XXS-5XL (26½")

- Contemporary fit
- Shoulder yokes
- Three pockets: patch pockets, cellphone pocket with self-loop
- Utility D-ring
- Princess lines
- Logo eyelet trim
- Side vents

Fabric:

75 Poly/21 Rayon/4 Spandex Twill

Available Colors:

Black BLKZ	D-Navy NVYZ	Pewter PWT
Royal RYLZ	D-Wine WINZ	

82310

Snap Front Warm-up Jacket



Sizes:

XS-5XL (26½")

- Contemporary fit
- Crew neck
- Three pockets: patch pockets, cellphone pocket with snap tab closure
- Princess lines
- Back belt

Fabric:

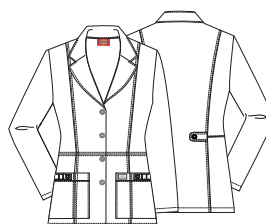
75 Poly/21 Rayon/4 Spandex Twill

Available Colors:

Black BLKZ	Dickies White DWHZ	D-Navy NVYZ
---------------	-----------------------	----------------

82400

Snap Front Lab Coat



Sizes:

XS-3XL (28")

- Contemporary fit
- Notched lapels
- Two patch pockets with pen slots
- Instrument loops on pockets
- Back belt tabs
- Princess lines

Fabric:

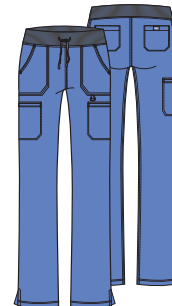
75 Poly/21 Rayon/4 Spandex Twill

Available Colors:

Black BLKZ	Dickies White DWHZ
---------------	-----------------------

DK020/P/T

Mid Rise Drawstring Pant



Sizes:

XXS-5XL (30½")
[P] XXS-3XL (28")
[T] XS-2XL (33½")

- Contemporary fit
- Rib-knit covered waistband with drawstring
- Six pockets: patch pockets, cargo pockets, back pockets
- Utility D-ring on left pocket
- Logo eyelet trim
- Side vents
- Straight leg, 16½" opening

Fabric:

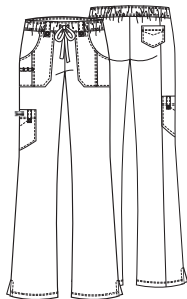
75 Poly/21 Rayon/4 Spandex Twill

Available Colors:

Black BLKZ	D-Navy NVYZ	Pewter PWT
Royal RYLZ		

82011/P/T

Mid Rise Drawstring Cargo Pant

**Sizes:**

XXS-5XL (30½")

[P] XXS-3XL (28")

[T] XS-2XL (33½")

- Contemporary fit
- Elastic waistband with drawstring
- Belt loops with logo eyelet trim
- Four pockets: two patch pockets, cargo pocket with self loops, back pocket
- Pen slots on right patch pocket
- Back leg seam and side vents
- Logo eyelet trim
- Moderate flare leg, 20½" opening

Fabric:

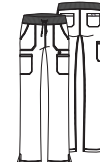
75 Poly/21 Rayon/4 Spandex Twill

Available Colors:

Black BLKZ	Caribbean Blue CRBZ	Ceil CBLZ
Dickies Teal DTLZ	Dickies White DWHZ	Eggplant EGPZ
Galaxy Blue GBLZ	Hunter Green HTRZ	Dark Khaki KHIZ
D-Navy NVYZ	Lt. Pewter PEWZ	Pewter PWT
Royal RYLZ	D-Wine WINZ	

**Xtreme Stretch
COLOR AND
STYLE MATRIX**

All styles and colors featured are reorderable and are made of Poly/Rayon/Spandex Twill. Center back lengths and inseams are noted in parentheses.

WOMEN'S TOPS**82851**V-Neck Top
XXS-5XL (26")**82400**Snap Front
Lab Coat
XS-3XL (28")**85956**Mock Wrap Top
XXS-5XL (26½")**82011/P/T**Mid Rise
Drawstring
Cargo Pant
XXS-5XL (30½")
[P] XXS-3XL (28")
[T] XS-2XL (33½")**DK020/P/T**Mid Rise
Drawstring Pant
XXS-5XL (30½")
[P] XXS-3XL (28")
[T] XS-2XL (33½")

Black
D-Navy
White
Royal
D-Wine
Pewter
Eggplant
Caribbean
Ceil
Lt. Pewter
Hunter
Teal
Dark Khaki
Galaxy Blue

BLKZ
NVYZ
DWHZ
RYLZ
WINZ
PWT
EGPZ
CRBZ
CBLZ
PEWZ
HTRZ
DTLZ
KHIZ
GBLZ

style not available
in this color

style not available
in this color
style not available
in this color
style not available
in this color
style not available
in this color
style not available
in this color
style not available
in this color
style not available
in this color
style not available
in this color
style not available
in this color

style not available
in this color

style not available
in this color
style not available
in this color
style not available
in this color
style not available
in this color
style not available
in this color
style not available
in this color
style not available
in this color
style not available
in this color

style not available
in this color

style not available
in this color
style not available
in this color
style not available
in this color
style not available
in this color
style not available
in this color
style not available
in this color
style not available
in this color
style not available
in this color

**82310**Snap Front
Warm-up Jacket
XS-5XL (26½")

BLKZ	NVYZ
DWHZ	



Indicates: * Fashion Colors | † Available in 6XL | ⓘ Style/color now available as Fashion
Fashion colors are not reorderable. All prints are fashion unless otherwise noted.



PERFORMANCE UNDER PRESSURE

Industrial laundry uniforms that defy expectations

Based on our top-selling colors and styles, these uniforms are rigorously wash-tested to maintain comfort, quality, and a professional look through 75 washings at 158° F (70° C).

GD600
Women's
V-Neck Top
in Navy (NAV)

GD100
Women's Mid Rise
Drawstring Pant
in Ciel Blue (CIE)

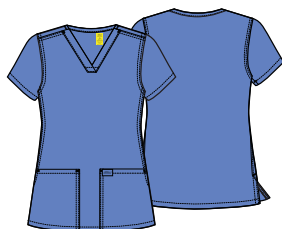


WOMEN'S

Industrial-strength uniforms with trusted Dickies style and performance.

- 4 Unisex scrubs styles
- 2 Women's scrubs styles
- Felled seams and reinforced bar tacking at stress points
- Secure self-fabric drawstring with reinforced ends
- Color-coded sizing system for easy sorting
- Off-centered labeling for barcode placement
- Discreetly placed size labeling to ensure privacy

GD600
Women's V-Neck Top



Sizes:
XS-5XL (26")

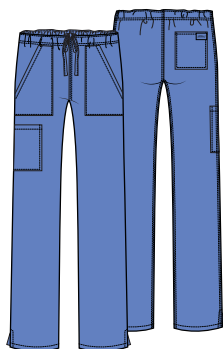
- Modern Classic fit
- Two patch pockets
- Clean-finished hems and pockets
- Side vents

Fabric:
80 Poly/20 Cotton Mechanical Stretch Twill

Available Colors:

Black BLK	Ciel Blue CIE	Navy NAV
Pewter PWT	Royal ROY	Surgical Green SGR

GD100/P/T
Women's Mid Rise
Drawstring Pant



Sizes:
XS-5XL (31")
[P] XS-3XL (28½")
[T] XS-2XL (34")

- Modern Classic fit
- Inside functional drawstring
- Four pockets: two front slash pockets, cargo pocket, back pocket
- Side vents
- Straight leg, 16½" opening

Fabric:
80 Poly/20 Cotton Mechanical Stretch Twill

Available Colors:

Black BLK	Ciel Blue CIE	Navy NAV
Pewter PWT	Royal ROY	Surgical Green SGR

UNISEX

GD300

Unisex Warm-up Jacket


Sizes:

XXS-5XL (29")

- Unisex fit
- Two patch pockets
- Silver ring-snap front closure
- Rib-knit cuffs

Fabric:

80 Poly/20 Cotton Mechanical Stretch Twill

Available Colors:

Black BLK	Ciel Blue CIE	Navy NAV
Pewter PWT	Royal ROY	Surgical Green SGR

GD640

Unisex V-Neck Top


Sizes:

XXS-5XL (26½")

- Unisex fit
- Two patch pockets
- Clean-finished hems and pockets
- Side vents

Fabric:

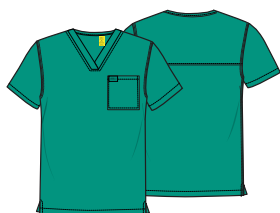
80 Poly/20 Cotton Mechanical Stretch Twill

Available Colors:

Black BLK	Ciel Blue CIE	Navy NAV
Pewter PWT	Royal ROY	Surgical Green SGR

GD620

Unisex Tuckable V-Neck Top


Sizes:

XXS-5XL (29")

- Unisex fit
- Chest pocket
- Clean-finished hems and pocket
- Side vents
- Looks good tucked or untucked

Fabric:

80 Poly/20 Cotton Mechanical Stretch Twill

Available Colors:

Black BLK	Ciel Blue CIE	Navy NAV
Pewter PWT	Royal ROY	Surgical Green SGR

GD120/S/T

Unisex Mid Rise Drawstring Pant


Sizes:

XXS-5XL (31")
[S] XXS-3XL (28½")
[T] XS-2XL (34")

- Unisex fit
- Inside functional drawstring
- Four pockets: two front slash pockets, cargo pocket, back pocket
- Straight leg, 16½" opening

Fabric:

80 Poly/20 Cotton Mechanical Stretch Twill

Available Colors:

Black BLK	Ciel Blue CIE	Navy NAV
Pewter PWT	Royal ROY	Surgical Green SGR

GD360

Unisex Snap Front Lab Coat


Sizes:

XXS-5XL (43")

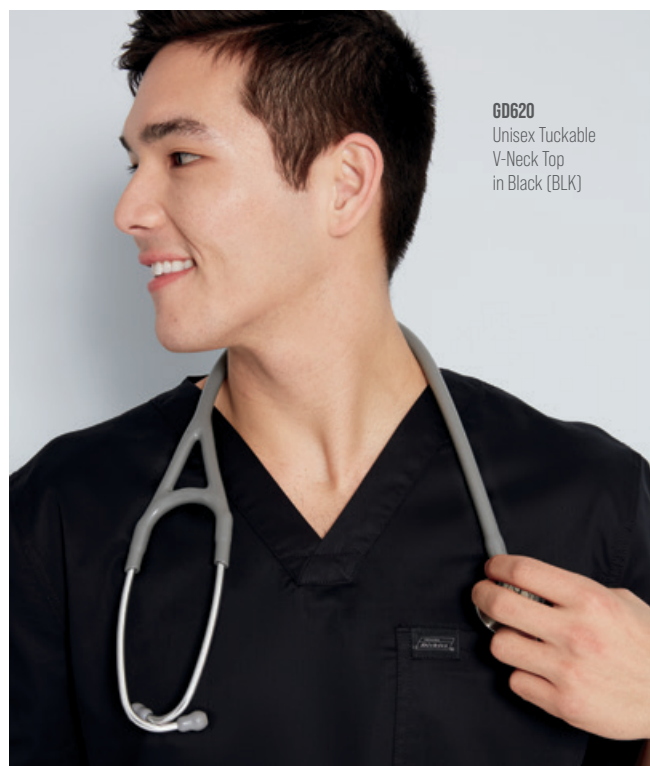
- Unisex fit
- Three pockets: one chest pocket, two front pockets with side access slits
- Snap-front closure
- Rib-knit back collar and cuffs
- Back yoke and center back seams
- Back kick pleat
- Back vent

Fabric:

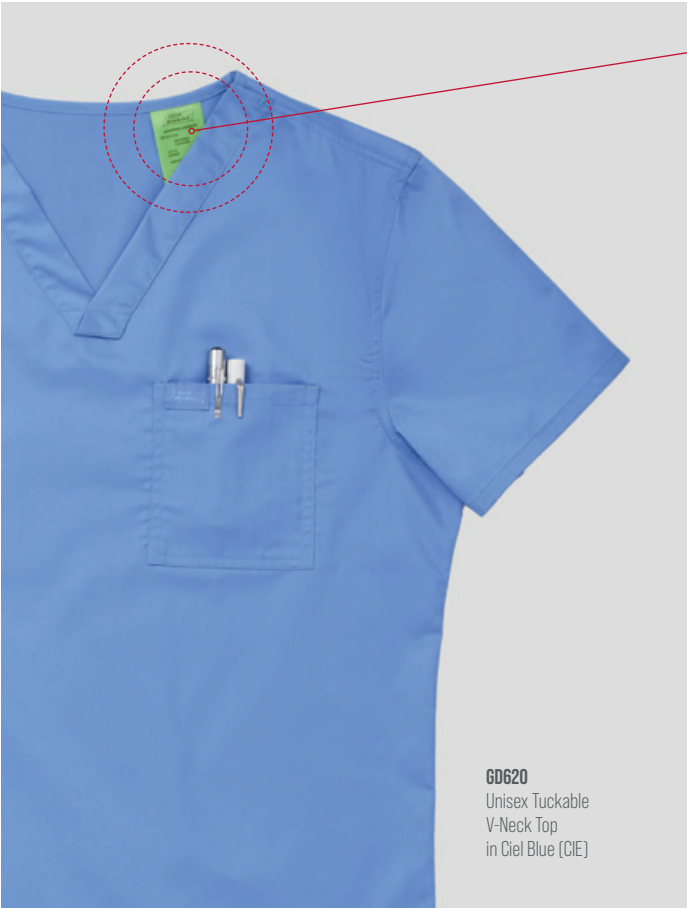
80 Poly/20 Cotton Mechanical Stretch Twill

Available Color:

White WHT



GD620
Unisex Tuckable
V-Neck Top
in Black (BLK)



OFF-CENTERED TAG
Allows for placement of RFID barcode.

EASY-TO-READ COLOR-CODED TAGS
Simple to sort and identify, discreetly placed inside the garment to ensure wearer privacy.



INDUSTRIAL LAUNDRY
**COLOR AND
STYLE MATRIX**
All styles featured are made from 80 Poly/20 Cotton Mechanical Stretch Twill. Center back lengths and inseams are noted in parentheses.

WOMEN'S		UNISEX				
GD600	GD100/P/T	GD120/S/T	GD640	GD620	GD300	GD360
Women's V-Neck Top XS-5XL (26")	Women's Mid Rise Drawstring Pant XS-5XL (31") [P] XS-3XL (28½") [T] XS-2XL (34")	Unisex Mid Rise Drawstring Pant XXS-5XL (31") [S] XXS-3XL (28½") [T] XS-2XL (34")	Unisex V-Neck Top XXS-5XL (26½")	Unisex Tuckable V-Neck Top XXS-5XL (29")	Unisex Warm-up Jacket XXS-5XL (29")	Unisex Snap Front Lab Coat (43")

Navy	NAV						style not available in this color
Pewter	PWT						style not available in this color
Ciel Blue	CIE						style not available in this color
Black	BLK						style not available in this color
Surgical Green	SGR						style not available in this color
Royal	ROY						style not available in this color
White	WHT	style not available in this color	style not available in this color	style not available in this color	style not available in this color	style not available in this color	

LAB COATS

SOMETHING FOR EVERYONE

In a variety of styles, lengths, and fits, Dickies has your lab coat needs covered.

82400
Lab Coat
in White (DWHZ)

DK880
V-Neck Top With
Rib-Knit Panels
in Navy (NWWZ)

DK125
Mid Rise Pull-on
Cargo Pant in
Navy (NWWZ)



83402
DWHZ



83404
DWHZ



83403
DWHZ



81403
DWHZ*



81404
DWHZ

Style

Fit

Sizes

Length

Fabrication

Pockets

Belt Detail

Unisex

Unisex

Unisex

Men's

Men's

XS-5XL

XS-5XL

XS-5XL

XS-3XL

XS-5XL

37"

37"

40"

31"

31"

Poly/Cotton
Poplin

Brushed Cotton/
Poly Twill

Poly/Cotton
Poplin

Cotton/Poly/
Spandex Twill

Poly/Cotton
Poplin

Three outside,
side entry

Three outside,
one inside (tablet)

Three outside,
side entry

Five outside

Three outside,
one inside

Sewn-down,
full back

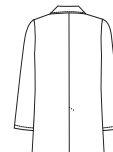
Sewn-down,
full back

None

None

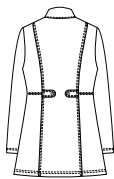
None

Back





Style	82400 DWHZ, BLKZ	82408 DWHZ	82402 DWHZ	85400 DWHZ	82410 DWHZ	82401 DWHZ
Fit	Contemporary	Contemporary	Contemporary	Contemporary	Contemporary	Contemporary
Sizes	XS-3XL	XXS-3XL	XS-3XL	XS-3XL	XS-3XL	XS-3XL
Length	28"	28"	30"	32"	36"	37"
Fabrication	Poly/Rayon/ Spandex Twill	Cotton/Poly/ Spandex Twill	Brushed Cotton/ Poly Twill	Cotton/Poly/ Spandex Twill	Cotton/Poly/ Spandex Twill	Brushed Cotton/ Poly Twill
Pockets	Two outside	Two outside	Four outside	Four outside	Three outside	Four outside
Belt Detail	Back button tabs	Sewn-down, half back	Sewn-down, half back	None	Adjustable sides	Sewn-down, full back



Back



Style	84401 DWHZ	84405 DWHZ	84400 DWHZ	84402 DWHZ	84500 DWHZ	GD360 WHT
Fit	Modern Classic	Modern Classic	Modern Classic	Modern Classic	Modern Classic	Unisex
Sizes	XS-3XL	XS-2XL	XS-3XL	XS-3XL	XS-3XL	XXS-5XL
Length	28"	29"	32"	34"	38"	43"
Fabrication	Poly/Cotton Poplin	Brushed Cotton/ Poly Twill	Poly/Cotton Poplin	Brushed Cotton/ Poly Twill	Brushed Cotton/ Poly Twill	Poly/ Cotton Mechanical Stretch Twill
Pockets	Three outside	Four outside	Three outside	Three outside	Chest pocket, patch pockets	Chest pocket, two front pockets with side access
Belt Detail	None	Adjustable half back, button tabs	Adjustable half back, button tabs	Side waist elastic	Front button-tab waistband	None



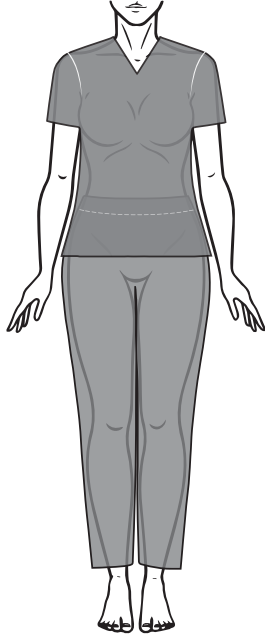
Back

GARMENT FIT GUIDE

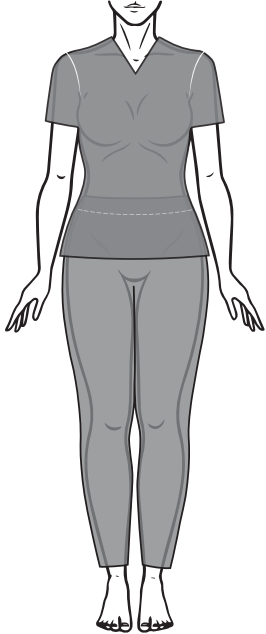
WOMEN'S

FIT GUIDE

MODERN CLASSIC FIT

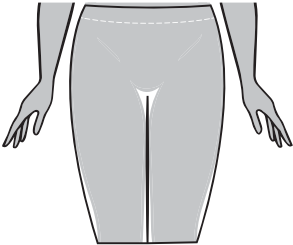


CONTEMPORARY FIT

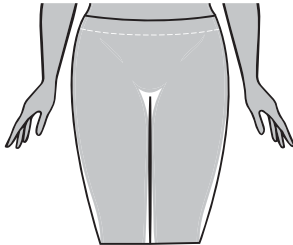


WAIST

MID RISE

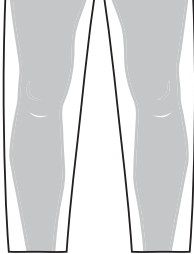


LOW RISE

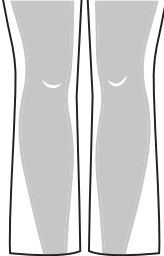


LEG FIT GUIDE

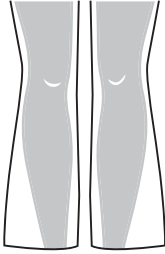
STRAIGHT



MODERN



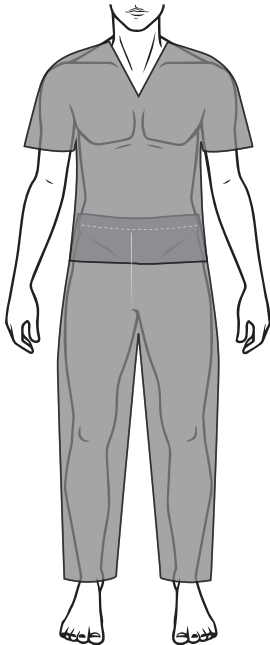
FLARE



MEN'S

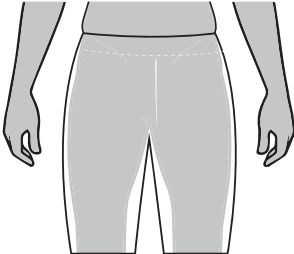
FIT GUIDE

MODERN CLASSIC FIT



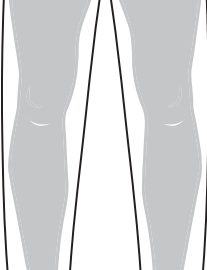
WAIST

NATURAL RISE



LEG FIT GUIDE

STRAIGHT



SIZE CHARTS

WOMEN'S MEASURING GUIDE

BUST

WAIST

HIPS

INSEAM



Measure under the arms
around the fullest part
of the bust/chest.

Measure under the
natural waistline, loosely
holding the tape measure.

Measure around the
fullest part of the hips.

Measure along the inside
of the leg, from just
below the crotch to 1"
below the ankle.

MEN'S MEASURING GUIDE

CHEST

WAIST

HIPS

INSEAM



MODERN CLASSIC/CONTEMPORARY FIT

	XXS 0	XS 2-4	S 6-8	M 10-12	L 14-16	XL 18-20	2XL 22-24	3XL 26-28	4XL 30-32	5XL 34-36	6XL 36-38
Bust	31-32	33-34	35-36	37-39	40-43	44-47	48-51	52-55	56-59	60-63	64-67
Waist	23-24	25-26	27-28	29-31	32-35	36-39	40-43	44-47	48-51	52-55	56-59
Hips	33-34	35-36	37-38	39-41	42-45	46-49	50-53	54-57	58-61	62-65	66-69
Inseam: Regular 30½, Petite 28, Tall 33½											

UNISEX FIT

	XS 2-4	S 6-8	M 10-12	L 14-16	XL 18-20	2XL 22-24	3XL 26-28	4XL 30-32	5XL 34-36
Chest	33-34	35-37	38-40	41-44	45-48	49-52	53-56	57-60	61-64
Waist	25-26	27-29	30-32	33-36	37-40	41-44	45-48	49-52	53-57
Hips	34-35	36-38	39-41	42-45	46-49	50-53	54-57	58-61	62-65
Inseam: Regular 31, Short 28½, Tall 34									

MEN'S FIT

	XS	S	M	L	XL	2XL	3XL	4XL	5XL	6XL
Chest	33-35	36-38	39-41	42-45	46-49	50-53	54-57	58-61	62-65	66-69
Waist	24-26	27-29	30-32	33-36	37-40	41-44	45-48	49-52	53-57	57-61
Hips	33-35	36-38	39-41	42-45	46-49	50-53	54-57	58-61	62-65	66-69
Inseam: Regular 32, Short 29½, Tall 35										

Use the chart to determine your size. If one of your measurements is borderline between two sizes, order the smaller size for a tighter fit or the larger size for a looser fit. If your measurements for hips and waist correspond to two different suggested sizes, order the one indicated by your hip measurement. All measurements are in inches.

To place an order, please call Customer Care: **800.283.7272** | **M - F | 6 AM to 4 PM PST** | Fax: **888.283.7271** | or order online at **cbicentral.com**

INDEX

STYLE #	COLOR/PRINT	PAGE(S)	STYLE #	COLOR/PRINT	PAGE(S)	STYLE #	COLOR/PRINT	PAGE(S)
81003/T	SOLID	67	DK190/P	SOLID	17, 23	DK709	HOFW	63
81006/T	SOLID	52	DK212/P/T	SOLID	29, 35	DK717	PYPL	60
81403	SOLID	67, 75	DK220/S/T	SOLID	33, 36	DK717	SFSP	58
81404	SOLID	75	DK223/S/T	SOLID	45, 48	DK717	SVRF	60
81722	SOLID	67	DK224/S/T	SOLID	32, 36	DK718	LVDT	57
81906	SOLID	52, 54	DK227	SOLID	13, 23	DK721	PAET	64
82011/P/T	SOLID	70	DK250/P	SOLID	7, 10	DK725	DGCL	58
82310	SOLID	69, 70	DK305	SOLID	43, 47	DK725	HEYS	64
82400	SOLID	69, 70, 76	DK306	BOTO	61	DK727	SOLID	13, 23
82401	SOLID	76	DK306	PWVB	56	DK730	SOLID	12, 16, 23
82402	SOLID	76	DK306	RTFU	63	DK731	DTSV	18
82408	SOLID	66, 68, 76	DK309	CASR	60	DK731	TGHP	14
82410	SOLID	66, 68, 76	DK309	FBEZ	62	DK731	TGHP	14
82851	SOLID	69, 70	DK309	LVDT	57	DK732	FACP	18
83006/S/T	SOLID	52, 54	DK309	WZMC	64	DK732	RAWR	19
83402	SOLID	75	DK310	SOLID	21, 24	DK740	SOLID	12, 16, 23
83403	SOLID	75	DK311	SOLID	6, 10	DK766	CLCK	14
83404	SOLID	75	DK330	SOLID	17, 23	DK779	TGWN	14
83706	SOLID	52, 54	DK360	SOLID	8, 10	DK780	SOLID	5, 10
84400	SOLID	76	DK365	SOLID	30, 35	DK790	SOLID	6, 10
84401	SOLID	76	DK370	SOLID	34, 36	DK800	SOLID	65, 68
84402	SOLID	76	DK380	SOLID	28, 35	DK810	SOLID	9, 10
84405	SOLID	76	DK502	SOLID	40, 48	DK812	SOLID	29, 35
84500	SOLID	51, 53, 76	DK513	CAMD	61	DK820	SOLID	21, 24
85400	SOLID	66, 68, 76	DK513	DATY	57	DK839	RBSR	13
85820	SOLID	50, 53	DK513	DGCL	58	DK840	SOLID	30, 35
85906	SOLID	50, 53	DK513	FBEZ	62	DK845	SOLID	34, 36
85956	SOLID	69, 70	DK513	LVAC	62	DK852	FBEZ	62
86106/P/T	SOLID	51, 54	DK513	LVDT	57	DK852	GNBZ	58
86206/P/T	SOLID	51, 54	DK514	BOTO	61	DK852	LVAC	62
86306	SOLID	51, 53	DK514	CASR	60	DK853	FGPL	60
86706	SOLID	50, 53	DK514	PWVB	56	DK865	SOLID	33, 36
86806	SOLID	50, 53	DK602	BIGH	17	DK870	SOLID	29, 35
817355	SOLID	65, 68	DK602	TDTP	13	DK875	SOLID	26, 31, 35
817455	SOLID	65, 68	DK607	FAPP	20	DK880	SOLID	49, 53
857455/P/T	SOLID	66, 68	DK610	SOLID	21, 24	DK925	SOLID	46, 48
DK005/P/T	SOLID	42, 47	DK615	SOLID	38, 41, 47	DK930	SOLID	8, 10
DK010/P/T	SOLID	42, 47	DK616	DATY	57	DK940	SOLID	28, 35
DK015/S/T	SOLID	46, 48	DK616	FUNB	61	GD100/P/T	SOLID	72, 74
DK019/S/T	SOLID	40, 48	DK616	TRBM	56	GD120/S/T	SOLID	73, 74
DK020/P/T	SOLID	69, 70	DK616	WZMC	64	GD300	SOLID	73, 74
DK035/P/T	SOLID	6, 10	DK617	UDDF	60	GD360	SOLID	73, 74, 76
DK040/S/T	SOLID	22, 24	DK619	SOLID	40, 48	GD600	SOLID	72, 74
DK050/P/T	SOLID	6, 10	DK622	CFPP	14	GD620	SOLID	73, 74
DK055/S/T	SOLID	9, 10	DK625	SOLID	43, 47	GD640	SOLID	73, 74
DK065/P/T	SOLID	44, 47	DK635	SOLID	45, 48			
DK080/P/T	SOLID	28, 35	DK640	SOLID	21, 24			
DK090/P/T	SOLID	38, 44, 48	DK645	SOLID	46, 48			
DK100/P/T	SOLID	66, 68	DK651	SOLID	7, 10			
DK110/S/T	SOLID	22, 24	DK656	CAMD	61			
DK111/S/T	SOLID	20, 24	DK700	CAFG	58			
DK125/P/T	SOLID	49, 54	DK700	PWVB	56			
DK130/P/T	SOLID	12, 16, 23	DK704	BIEO	56			
DK135/P/T	SOLID	31, 35	DK704	RTFU	63			
DK155/P/T	SOLID	26, 30, 35	DK708	CASR	59			
DK185/P/T	SOLID	16, 23	DK709	BOTO	61			

DK619

Unisex V-Neck Top
in Hunter Green
(HNPS)

DK019

Unisex Natural Rise
Drawstring Pant
in Hunter Green
(HNPS)





MEDICAL

Careismatic Brands
9800 De Soto Ave., Chatsworth, CA 91311
Customer Care: 800.283.7272
M – F, 6 am to 4 pm PST
Fax: 888.283.7271
Email: orderinginquiry@careismatic.com
Order on CBI Central: cbicentral.com

Need digital assets? Email us at
digitalassets@careismatic.com

SATISFACTION GUARANTEED
www.dickiesmedical.com for more details