

GROUP

HAPPINESS FOR ALL

2021 - 2022



If you're already familiar with koi, you know we're not your typical uniform company. We do things a little differently.

It's what makes us passionate about the styling, fabric and fit of every garment we make. Our commitment is the same when it comes to group styles. That's why we design our group collections to be inclusive and flattering for all shapes and sizes. We offer more options than most when it comes to petite, tall and plus sizes. It's all about group happiness.

After all, if your team has to wear scrubs to work every day, shouldn't they love them?

**We are all about designing happiness.
One stitch at a time.**



Kathy Peterson
Kathy Peterson
koi founder & designer-in-chief

koi BRAND SELECTION GUIDE

TIER
ONE
PREMIUM
PERFORMANCE

koi **lite™** PAGE 6

koi™ **next
gen** PAGE 12

TIER
TWO
STYLISH
INNOVATION

BETSEY JOHNSON
PAGE 18

koi **CLASSICS™** PAGE 22

TIER
THREE
ESSENTIAL
COMFORT

koi **BASICS** EST. 2000
PAGE 28

FIT CHART PAGE 4

LABCOATS PAGE 34

WOMEN
& MENS MATRIX PAGE 42

FROM PREMIUM COLLECTIONS FEATURING HIGH-PERFORMANCE FABRICS TO EVERYDAY ESSENTIALS, WE'VE GOT YOUR GROUP NEEDS COVERED.

WWW.KOIHAPPINESS.COM



FIT GUIDES AND SIZE CHARTS

THE RIGHT FIT FOR GROUPS

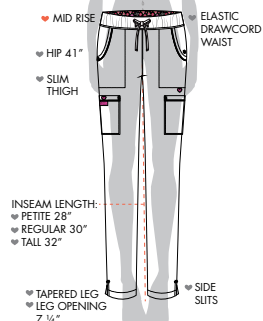
Getting the fit right for your group is so important. That's why we offer a broad range of sizes and inseams to accommodate everyone on your team. For best results, we recommend team members try on garments in person, if possible.

- ♥ **NATURAL RISE**
At the waist or slightly above
- ♥ **MID RISE**
Slightly below the waist
- ♥ **LOW RISE**
Below the waist or resting on the hip

WOMEN'S CONTEMPORARY FIT

CONTOURS TO YOUR CURVES

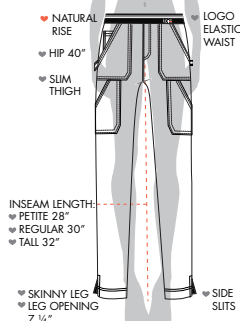
BUTTERCUP PANTS



BETSEY JOHNSON

PAGE 20

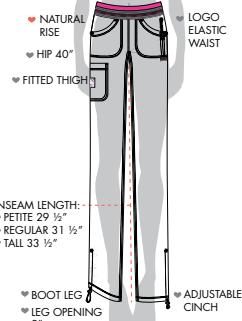
ON THE RUN PANTS



koixnext GEN

PAGE 17

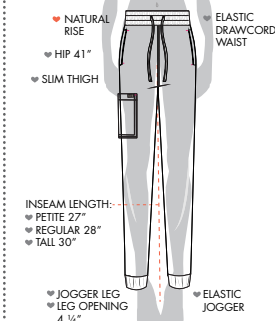
SPIRIT PANTS



koilite

PAGE 10

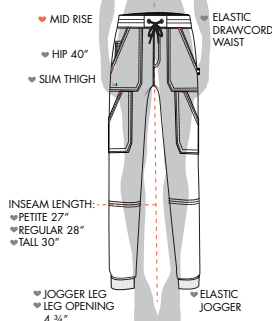
GEMMA JOGGER



koibasics

PAGE 32

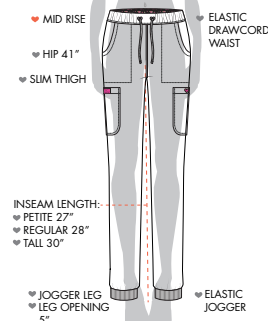
GOOD VIBE JOGGER



koixnext GEN

PAGE 17

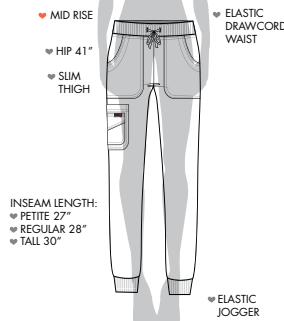
ASTER JOGGER



BETSEY JOHNSON

PAGE 21

FIERCE JOGGER

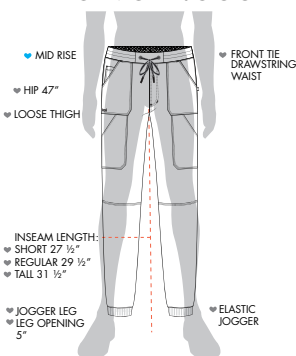


koilite

PAGE 10

MEN'S CONTEMPORARY FIT

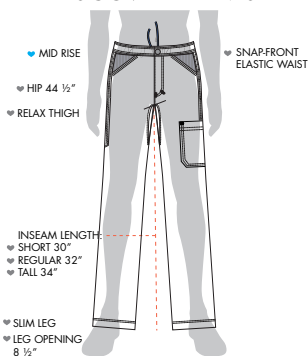
DAY TO NIGHT JOGGER



koixnext GEN

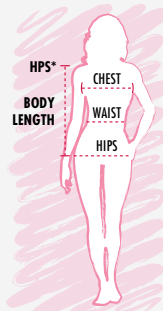
PAGE 15

DISCOVERY PANTS



koilite

PAGE 11



Size Range	XXS	XS	S	M	L	XL	2X	3X	4X	5X
Size Comparison	00-0	0-2	4-6	8-10	12-14	16-18	20-22	24-26	26-28	30-32
Chest	30-32	33-35	35-37	37-39	39-41	43-45	46-48	49-52	53-56	57-60
Waist	22-24	25-27	27-29	29-31	31-33	34-36	38-40	41-44	45-48	49-52
Hips	32-34	34-36	36-38	39-41	42-44	45-47	48-50	51-53	54-57	58-61
Inseam-approximately*	31	31	31	31	31	31	31	31	31	31
Extra Petite Inseam-approx.	27	27	27	27	27	27	N/A	N/A	N/A	N/A
Petite Inseam-approx.*	29	29	29	29	29	29	29	29	N/A	N/A
Tall Inseam-approx.*	N/A	33	33	33	33	33	33	33	N/A	N/A

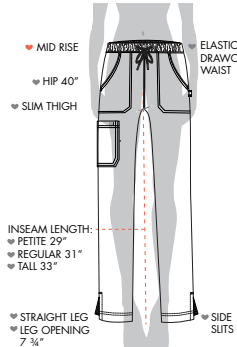
To select the appropriate pants size, please refer to the hip measurement on the chart.

*Lindsey pant Tall Inseam-approx. 34".

- ♥ **NATURAL RISE**
At the waist or slightly above
- ♥ **MID RISE**
Slightly below the waist
- ♥ **LOW RISE**
Below the waist or resting on the hip

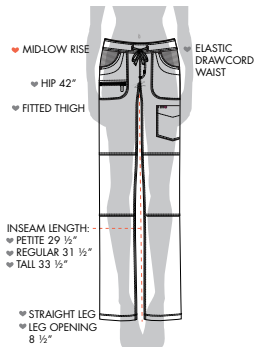
WOMEN'S MODERN CLASSIC FIT DRAPES THE BODY WITH EASE

EVERYDAY HERO PANTS



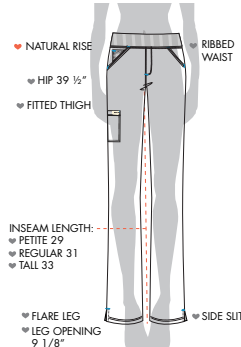
koi NEXT GEN
PAGE 16

PEACE PANTS



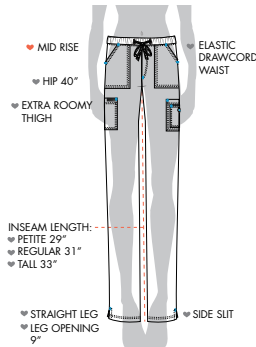
koi lite™
PAGE 10

LAURIE PANTS



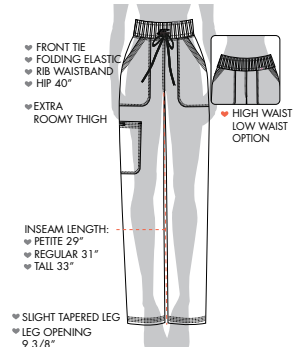
koi BASICS | 嵐
PAGE 32

HOLLY PANTS



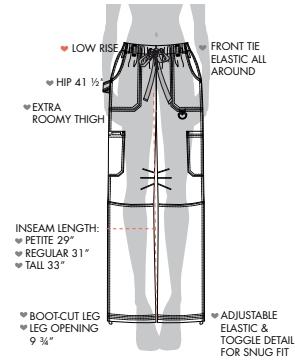
koi BASICS | 嵐
PAGE 32

MORGAN PANTS



koi
PAGE 25

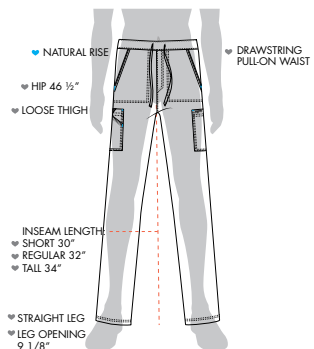
LINDSEY™ PANTS



koi
PAGE 25

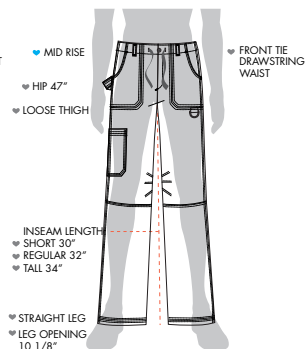
MEN'S MODERN CLASSIC FIT

LUKE PANTS

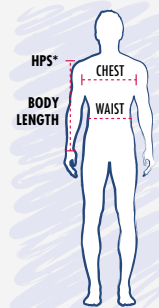


koi BASICS | 嵐
PAGE 33

JAMES PANTS



koi
PAGE 27



Size Range	XS	S	M	L	XL	2X	3X	4X	5X
Chest	32-33	34-36	38-40	42-44	46-48	50-52	54-56	58-60	62-64
Waist	26-27	28-30	30-32	34-36	38-40	40-42	44-46	48-50	52-54
Inseam-approx.	32	32	32	32	32	32	32	32	32
Short Inseam-approx.	30	30	30	30	30	30	30	30	30
Tall Inseam-approx.	34	34	34	34	34	34	34	34	34

To select the appropriate pants size, please refer to the waist measurement on the chart.



ADVANCED PERFORMANCE SCRUBS

Inspired by contemporary athletic wear, koi Lite is ideal for active groups seeking high-performance scrubs that can stand up to whatever the world throws at you.

Lightweight performance stretch and moisture-wicking allow your team to take on the day's challenges without breaking a sweat. Rib knit trim provides extra flexibility when work requires it. And easy care means your team can look poised and professional at all times, no ironing required.

FABRIC 100% polyester dobby / 2-way stretch
RIB TRIM 95% polyester dobby / 5% spandex





High quality, fade and
shrink resistant fabric



Amazing comfort

MODERN AND ATHLETIC LIGHTWEIGHT



Outstanding breathability
and moisture wicking



4-way stretch for easy
movement and flexibility

667 | 606



317 | 721

Kovite™

TIER
ONE
PREMIUM
PERFORMANCE



370PR REFORM TOP

Contemporary fit

Our bestselling ombre top with a great new print design. Super comfortable, moisture-wicking, stretch fabrics with rib trim on sides, 2 side entry pockets.

SIZES: XXS-3X
LENGTH SIZE S: 26 5/8"



1041 VIVACIOUS TOP

Modern Classic Fit

This new, lightweight v-neck stretch top is flattering for all shapes and sizes. Features rib trim at neck and sleeves, moisture-wicking and chest pocket.

SIZES: XXS-3X
LENGTH SIZE S: 27"



317 SERENITY TOP

Contemporary fit

Lightweight, easy care top with double-zipper at neck, 4 front pockets, moisture-wicking and stretch rib trim on sides.

SIZES: XXS-5X
LENGTH SIZE S: 27"



002 Black

012 Navy

077 Charcoal

020 Royal Blue

445 CLARITY JACKET

Modern Classic Fit

One of our most popular jackets. Features 2-way zipper, 2 front pockets, hidden pocket and rib knit trim at sides, waist and cuffs.

SIZES: XXS-3X
LENGTH SIZE S: 27"



316 PHILOSOPHY

Modern Classic Fit

This lightweight, breathable mock-wrap top is a perennial bestseller. 2 roomy front pockets, side zipper pocket, moisture-wicking and stretch rib trim on sides.

SIZES: XXS-5X
LENGTH SIZE S: 26"

002 Black

012 Navy

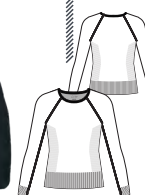
077 Charcoal

038 Caribbean Blue

020 Royal Blue

061 Wine

042 True Ceil



002 Black

315 DIVINE TEE

Contemporary fit

Great-looking, seamless long-sleeve tee with moisture-wicking, stretch ribbing on sides, waist and cuffs, and fashionable thumbholes. Great layered or solo.

SIZES: XS/S, M, L/XL
LENGTH SIZE S: 26"

**SUPERIOR
COMFORT
LIGHTWEIGHT
BREATHABLE**
&
**WRINKLE
FREE**

VISIT OUR WEBSITE FOR
ADDITIONAL STYLES + COLORS
WWW.KOIHAPPINESS.COM

PLEASE CHECK WITH YOUR RETAILER
FOR AVAILABILITY.



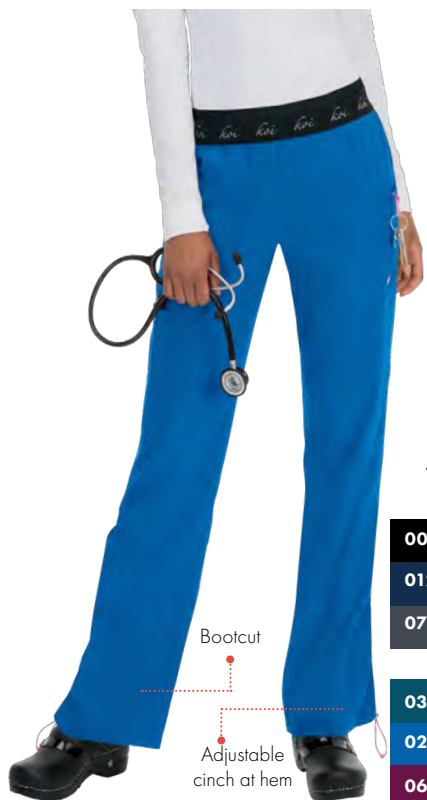
For customer service,
call **800.828.4526**

FABRIC
100% ^{POLYESTER} Dobby
2 - WAY
STRETCH
RIB TRIM

95% ^{POLYESTER}
5% ^{SPANDEX}

Koi Item™

TIER
ONE
PREMIUM
PERFORMANCE



5
POCKETS

002 Black
012 Navy
077 Charcoal
038 Caribbean
020 Royal Blue
061 Wine
042 True Ceil

Bootcut

Adjustable
cinch at hem

BEST SELLER

720 SPIRIT PANTS

Contemporary Fit

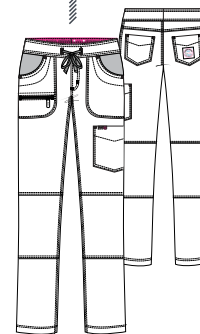
Our super comfortable, ever popular yoga-style pant. Natural rise, double elastic waistband, bungee cord for key ring, 5 pockets and adjustable cinch at hem. Boot cut.

(R) XXS-5X (31 1/2" inseam)
(P) XXS-5X (29 1/2" inseam)
(T) XS-3X (33 1/2" inseam)



Straight Leg

6
POCKETS



Neon Pink Contrast
at Waistband

002 Black
012 Navy
077 Charcoal
038 Caribbean
020 Royal Blue
061 Wine
042 True Ceil

ZIPPERS



721 PEACE PANTS

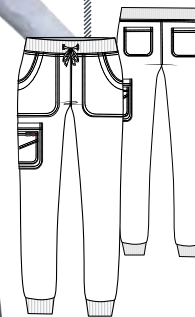
Modern Classic Fit

Everyone loves our ultra stylish, lightweight Peace pants. Super comfortable, it features a low-rise drawstring waist, stretch rib trim at the front pockets and 6 pockets in all. Straight leg.

(R) XXS-5X (31 1/2" inseam)
(P) XXS-5X (29 1/2" inseam)
(T) XS-3X (33 1/2" inseam)



6
POCKETS



002 Black
012 Navy
077 Charcoal

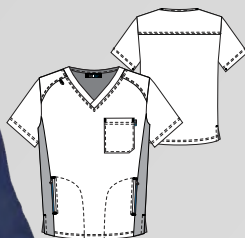
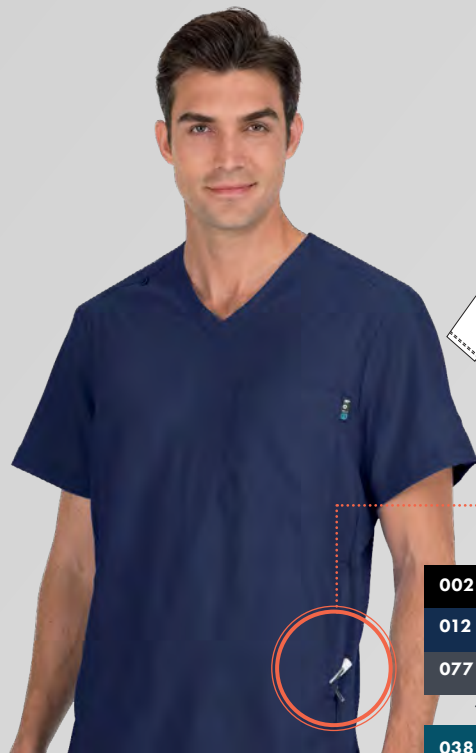
Jogger leg

750 FIERCE JOGGER

Contemporary Fit

Modern, athletic, lightweight jogger-style pant with elastic rib waist, plenty of roomy pockets and ribbed cuffs. Super comfortable.

(R) XXS-3X (28" inseam)
(P) XXS-3X (27" inseam)
(T) XS-XL (30" inseam)



Zip Fly Front

Side zipper pockets

002	Black
012	Navy
077	Charcoal
038	Caribbean
020	Royal Blue

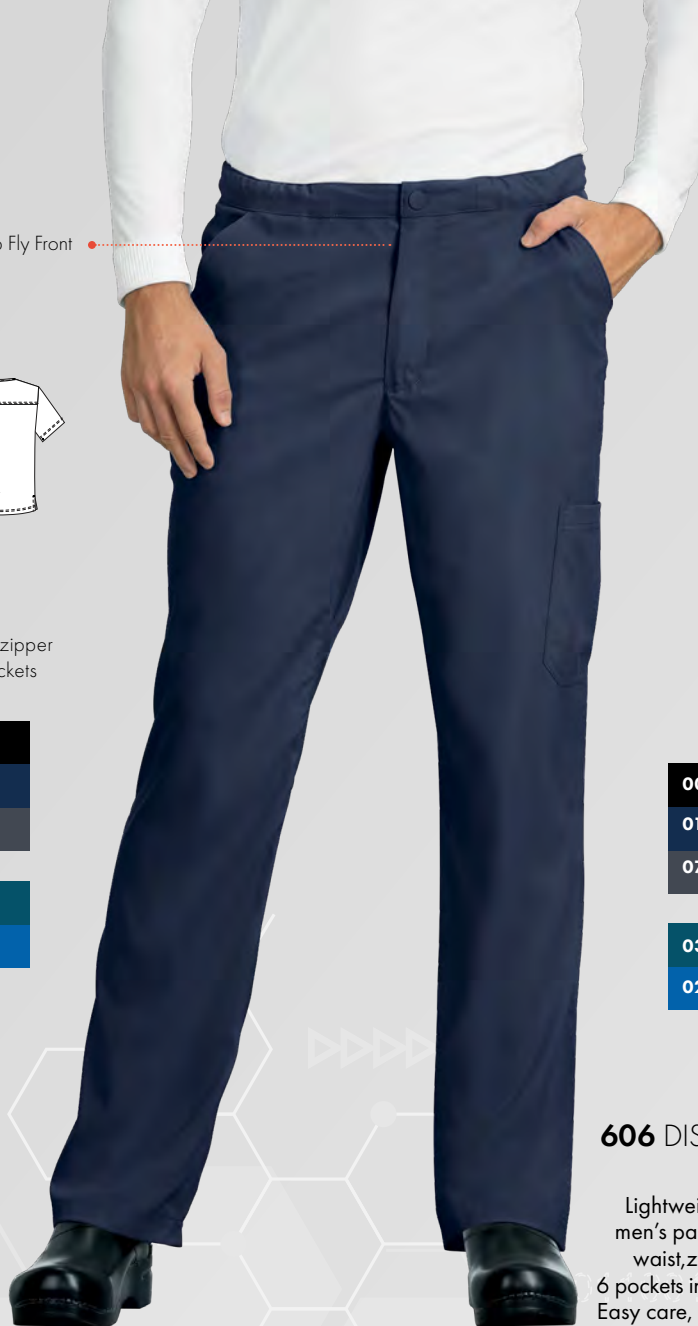
667 FORCE MEN'S TOP

Contemporary fit

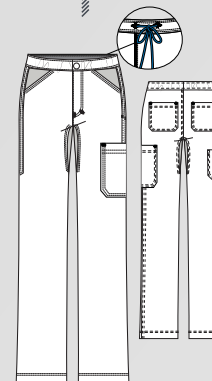
Ultra comfortable, durable and easy to care for, made with lightweight, moisture-wicking fabrics. Side zipper pockets.

SIZES: XS-3X

LENGTH SIZE L: 31 1/2"



POCKETS



002	Black
012	Navy
077	Charcoal
038	Caribbean
020	Royal Blue

606 DISCOVERY MEN'S PANTS

Contemporary fit

Lightweight, breathable, easy care men's pant with hidden drawstring at waist, zipper fly, ribs knit accents, 6 pockets including hidden zipper pocket. Easy care, performance stretch. Slim leg.

(R) XS-3X (32" inseam)
(S) XS-3X (30" inseam)
(T) XS-3X (34" inseam)

**SUPERIOR
COMFORT
LIGHTWEIGHT
BREATHABLE**

**&
WRINKLE
FREE**

VISIT OUR WEBSITE FOR
ADDITIONAL STYLES + COLORS
WWW.KOIHAPPINESS.COM

PLEASE CHECK WITH YOUR RETAILER
FOR AVAILABILITY.



For customer service,
call **800.828.4526**

FABRIC

100% ^{POLYESTER} Dobby

2 - WAY
STRETCH

RIB TRIM

95% ^{POLYESTER}

5% ^{SPANDEX}

Koi Item™

TIER
ONE
PREMIUM
PERFORMANCE



KOI™ NEXT
GEN

CONTEMPORARY PREMIER WEAR

What's the best way to keep your group happy? Give them scrubs they'll love. Modern, professional and packed with personality, koi Next Gen will have your team confident and ready to take on the world.

This collection has it all. Fresh, innovative styling. Unique and functional design details your team members will appreciate. Plenty of pockets. And comfort that doesn't quit.

73% polyester / 22% rayon / 5% spandex stretch twill



1010 | 740



671 | 608



High quality, fade and
shrink resistant fabric



Amazing comfort

FRESH AND MODERN DESIGNS



Outstanding breath ability
and moisture wicking



4-way stretch for easy
movement and flexibility

KOITM NEXT
GEN

TIER
TWO
STYLISH
INNOVATION



002 Black

012 Navy

077 Charcoal

038 Caribbean Blue

020 Royal Blue

122 Heather Grey

061 Wine

1010 READY TO WORK TOP

Modern Classic Fit

Amazingly comfortable basic v-neck top featuring a welt pocket with snap at chest, contrast print at neck and side slits.

SIZES: XXS-5X

LENGTH SIZE S: 26 1/2"



002 Black

012 Navy

077 Charcoal

038 Caribbean Blue

020 Royal Blue

122 Heather Grey

061 Wine

1019 HUSTLE & HEART TOP

Modern Classic Fit

Stylishly modern top with extra wide v-neck, print facing at neck, 3 front pockets and bungee loop for ID badge. Super comfortable 4-way stretch.

SIZES: XXS-5X

LENGTH SIZE S: 27"



002 Black

012 Navy

077 Charcoal

020 Royal Blue

061 Wine

1009 BACK IN ACTION TOP

Contemporary Fit

Sleek, modern zipper-neck top with bungee loop for ID badge, 3 front pockets. Side slits.

SIZES: XXS-5X

LENGTH SIZE S: 27"



002 Black

012 Navy

122 Heather Grey

458 ALWAYS IN MOTION JACKET

Modern Fit

A great jacket to complement your outfit. Ultra soft to the touch with zipper front, ribbed neck and cuffs and 2 front pockets with print lining and interior hidden pockets. 4-way stretch.

SIZES: XXS-3X



002 Black

012 Navy

077 Charcoal

122 Heather Grey



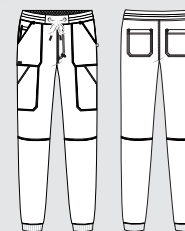
671 ON CALL MEN'S TOP

Contemporary Fit

Every guy's wardrobe needs a go-to scrub top. This is our pick—a classic, one-pocket, v-neck top that's super soft and breathable. 4-way stretch.

SIZES: XXS-5X

LENGTH SIZE L: 30 1/4"



608 DAY TO NIGHT MEN'S JOGGER

Contemporary Fit

Just try to find a more comfortable men's jogger than this one. Features drawstring waist, 7 pockets and ribbed cuffs. Super soft 4-way stretch twill fabric.

(R) XXS-5X (29" inseam)
(S) XXS-3X (27" inseam)
(T) XS-XL (31" inseam)

**AMAZING
COMFORT
BREATHABILITY**

**&
FIT PLUS
4-WAY STRETCH**

VISIT OUR WEBSITE FOR
ADDITIONAL STYLES + COLORS
WWW.KOIHAPPINESS.COM

PLEASE CHECK WITH YOUR RETAILER
FOR AVAILABILITY.



For customer service,
call **800.828.4526**

**ULTRA
SOFT**

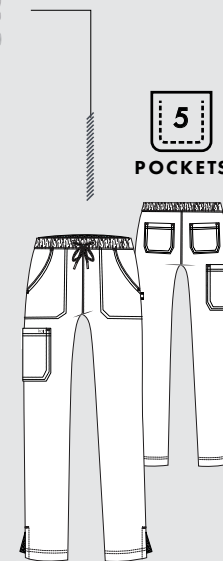
**BRUSHED
73% POLYESTER**

22% RAYON

**5% SPANDEX
Twill**

KOI
NEXT

TIER
TWO
STYLISH
INNOVATION



002	Black
012	Navy
077	Charcoal
038	Caribbean Blue
020	Royal Blue
122	Heather Grey
061	Wine

739 EVERYDAY HERO PANT

Modern Classic Fit

The perfect everyday scrub pant. Stylish, durable and extremely comfortable. Drawstring waist with 2 sidepockets, 2 back pockets and cargo pocket. Straight leg.

(R) XXS-5X (31" inseam)
(P) XXS-3X (29" inseam)
(T) XS-XL (33" inseam)

739



740 GOOD VIBE JOGGER

Contemporary Fit

If you choose one jogger, make it this one. Stylish and super comfortable with drawstring waist, 7 pockets for all your stuff and rib cuffs at hem. 4-way stretch.

(R) XXS-5X (28" inseam)
(P) XXS-3X (27" inseam)
(T) XS-XL (30" inseam)



738 ON THE RUN PANT

Contemporary Fit

Skinny leg pant with super comfy elastic waistband, 7 pockets and tool loop on side. Natural rise.

(R) XXS-5X (30" inseam)
(P) XXS-3X (28" inseam)
(T) XS-XL (32" inseam)

**AMAZING
COMFORT
BREATHABILITY**
&
FIT PLUS
4 -WAY STRETCH

VISIT OUR WEBSITE FOR
ADDITIONAL STYLES + COLORS
WWW.KOIHAPPINESS.COM

PLEASE CHECK WITH YOUR RETAILER
FOR AVAILABILITY.



For customer service,
call **800.828.4526**

**ULTRA
SOFT**

BRUSHED
73% POLYESTER

22% RAYON

5% SPANDEX
Twill

BETSEY JOHNSON!

PERSONALITY IS A GOOD THING

Your group isn't like everyone else's. Why should your scrubs be? Let your group's personality shine through with Betsey Johnson scrubs.

Professional, yet fashion forward and fun, these high-performance scrubs offer you style and comfort. With a little attitude on the side.

...DEAR NURSES...
THANK YOU FOR YOUR
LOVE + CARE!



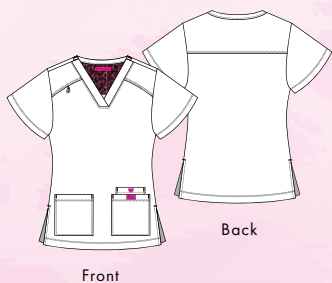
XOX
BETSEY



BEST SELLER
B101 FREESIA TOP
Modern Classic Fit

This super cute v-neck top features bungee loop for ID badge, 3 front pockets including a snap button pocket and side slits.

SIZES: XXS-3X
LENGTH SIZE S: 27"



002 Black

012 Navy

077 Charcoal

020 Royal Blue

022 Ruby

058 Flamingo

073 Raspberry

042 True Ceil



73% POLYESTER

&

22% RAYON

5% SPANDEX
4-WAY STRETCH TWILL

VISIT OUR WEBSITE FOR
 ADDITIONAL STYLES + COLORS
WWW.KOIHAPPINESS.COM

PLEASE CHECK WITH YOUR RETAILER
 FOR AVAILABILITY.



For customer service,
 call **800.828.4526**

betsey johnson

TER
 TWO
 STYLISH
 INNOVATION

BETSEY JOHNSON.

BEST SELLER

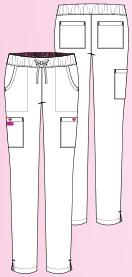
B700 BUTTERCUP PANT

Contemporary Fit

These bestselling pants feature a mid-rise elastic waist with drawstring ties, 6 pockets, and side slits at hem. Slim fit.

6

POCKETS



002 Black

012 Navy

077 Charcoal

020 Royal Blue

022 Ruby

058 Flamingo

073 Raspberry

042 True Ceil





B703 ASTER JOGGER

Contemporary Fit

These super comfy jogger pants feature a mid-rise elastic waist with drawstring ties, 6 pockets and ribbed cuffs at hem.

(R) XXS-3X (28" inseam)
(P) XXS-3X (27" inseam)
(T) XS-XL (30" inseam)

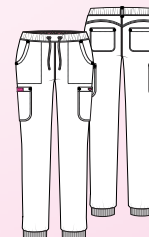
002 Black

012 Navy

058 Flamingo



POCKETS



73% POLYESTER

&

22% RAYON

5% SPANDEX
4-WAY STRETCH TWILL

VISIT OUR WEBSITE FOR
ADDITIONAL STYLES + COLORS
WWW.KOIHAPPINESS.COM

PLEASE CHECK WITH YOUR RETAILER
FOR AVAILABILITY.



For customer service,
call **800.828.4526**

BETSEY JOHNSON

THE
TWO
STYLISH
INNOVATION



YOUR ORIGINAL koi FAVORITES

When it comes to group happiness, our koi Classics Collection checks all the boxes. Dress code friendly. All the core colors. Amazing quality. And some of our most popular styles ever.

Like our signature Lindsey cargo pants, our all-time bestseller. Breathable and cottony soft, koi Classics will keep you and your team looking good and feeling confident and comfortable all day long.

55% cotton / 45% polyester soft twill





654 | 601



247 | 713



Premium twill fabric
for a luxurious feel



Strong and durable

MODERN CLASSIC FIT WITH COTTON RICH



Amazing comfort



Cotton blend fabric

KAY CLASSICS™

TIER
THREE
ESSENTIAL
COMFORT



002 Black

012 Navy

077 Charcoal

038 Caribbean

020 Royal Blue

061 Wine

042 True Ceil

BEST SELLER

137 KATELYN TOP

Modern Classic Fit

Our bestselling mock-wrap top with print facing at neck, adjustable front tie at waist and 2 deep pockets.

SIZES: XS-3X

LENGTH SIZE S: 27 1/4"



002 Black

012 Navy

077 Charcoal

038 Caribbean

020 Royal Blue

061 Wine

042 True Ceil

BEST SELLER

247 NICOLE TOP

Modern Classic Fit

This easy-fit, pullover style top feature soft rib trim at the neck and sleeves, 3 front pockets including a chest pocket and side slits.

SIZES: XS-3X

LENGTH SIZE S: 26"



Adjustable drawstring waist

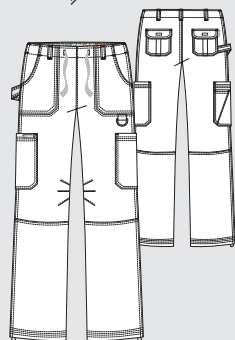
D-ring

Bootcut with bungee toggles at hem



Side Cargo Pocket

7
POCKETS

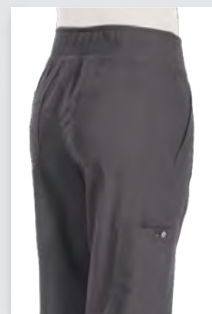
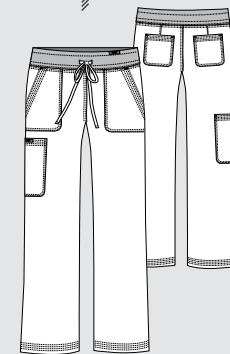


Waistband flips
up or down

Straight leg



5
POCKETS



BEST SELLER
701 LINDSEY PANT
Modern Classic Fit

Our all-time bestselling pants. Low-rise cargo style pants with elastic waist, drawstring ties that won't come loose, D-ring and 7 pockets including one for scissors. Boot cut.

(R) XXS-5X (31" inseam)
(P) XXS-3X (29" inseam)
(T) XS-XL (33" inseam)
(XP) XXS-XL (27" inseam)
Black, Charcoal, Navy only

002 Black
012 Navy
077 Charcoal

038 Caribbean
020 Royal Blue
061 Wine
042 True Ceil

BEST SELLER
713 MORGAN PANT
Modern Classic Fit

Bestselling yoga-style pants with wide elastic waistband that can be worn up or down. 5 pockets, straight leg.

(R) XXS-3X (31" inseam)
(P) XXS-3X (29" inseam)
(T) XS-XL (33" inseam)

002 Black
012 Navy
077 Charcoal

038 Caribbean
020 Royal Blue
061 Wine
042 True Ceil

AMAZING
COTTON RICH
COMFORT
LUXURIOUS
— & —
DURABLE

SOFT
TO THE TOUCH

55% COTTON

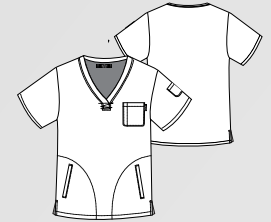
POLYESTER
45% SOFT TWILL

VISIT OUR WEBSITE FOR
ADDITIONAL STYLES + COLORS
WWW.KOIHAPPINESS.COM

PLEASE CHECK WITH YOUR RETAILER
FOR AVAILABILITY.

For customer service,
call **800.828.4526**

KOI CLASSICS™
TIER THREE
ESSENTIAL
COMFORT



002 Black

012 Navy

020 Royal Blue

BEST SELLER

654 JASON MEN'S TOP

Modern Classic Fit

One of our most popular men's tops. Henley neckline, chest pocket with pen slot, sleeve pocket, 2 side entry pockets, side slits.

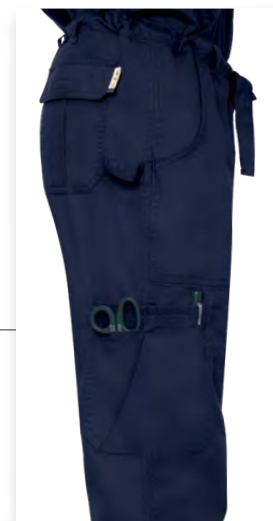
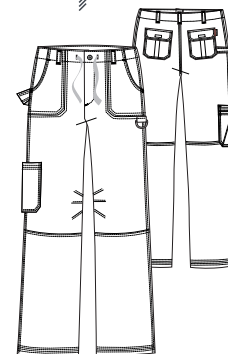
SIZES: XS-3X

LENGTH SIZE L: 31 1/4"

Zip fly front



6
POCKETS



BEST SELLER

601 JAMES PANT

Modern Classic Fit

Incredible comfort and durability
in a zip-fly drawstring pant design.

(R) XS-3X (32" inseam)
(S) XS-3X (30" inseam)
(T) XS-3X (34" inseam)

002	Black
012	Navy
020	Royal Blue

AMAZING
COTTON RICH
COMFORT

LUXURIOUS

&

DURABLE

SOFT
TO THE TOUCH

55% COTTON

POLYESTER
45% SOFT TWILL

VISIT OUR WEBSITE FOR
ADDITIONAL STYLES + COLORS
WWW.KOIHAPPINESS.COM

PLEASE CHECK WITH YOUR RETAILER
FOR AVAILABILITY.



For customer service,
call **800.828.4526**

KOI CLASSICS™

TIER
THREE
ESSENTIAL
COMFORT



NOT-SO-BASIC BASICS

Our koi Basics collection offers you premium quality and performance at a popular price. Your team will love the compliments they get, the amazing fit, the many pockets and functional features, and the lightweight breathability that makes these scrubs ideal year round.

Best of all, your group will look good with little fuss, no ironing required.



SOLIDS: 95% Polyester, 5% Spandex

HEATHER: 90% polyester / 10% spandex



1011 | 731



668 | 605



Strong and Durable



High quality, fade and
shrink resistant fabric

AWESOME SCRUBS AND GREAT ESSENTIAL



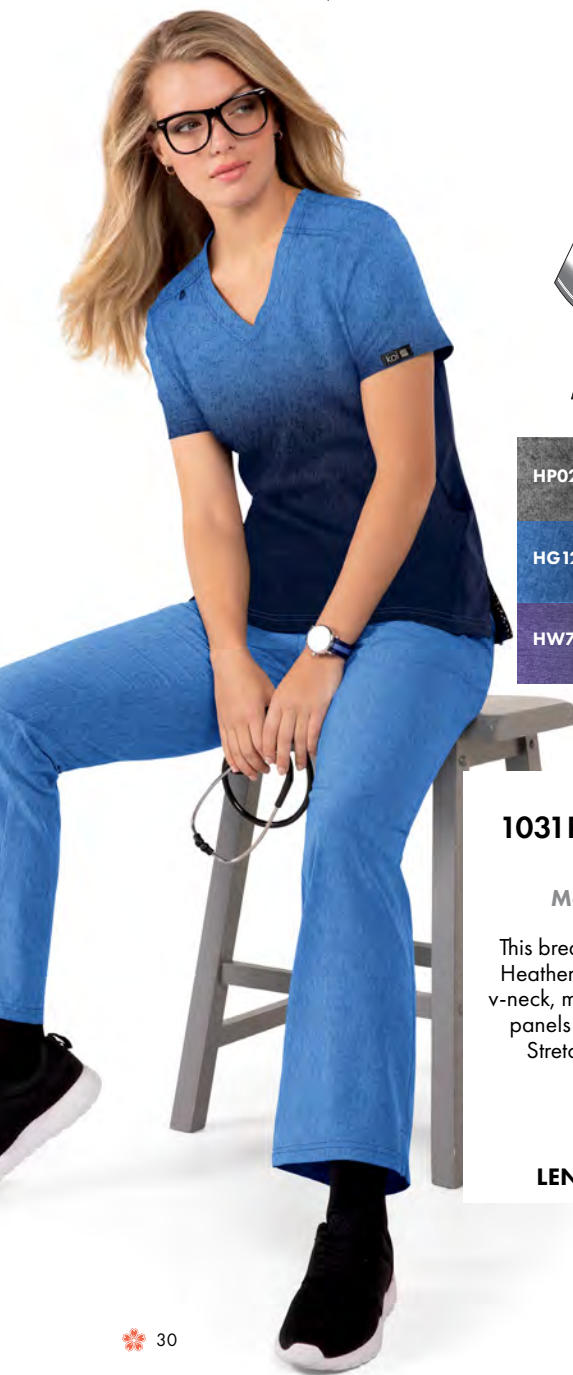
Amazing comfort



Outstanding breathability
and moisture wicking

KOI BASICS | EST. 2011

TIER
THREE
ESSENTIAL
COMFORT



HP02 Heather Grey Ombre

HG12 Heather Galaxy Ombre

HW77 Heather Wisteria Ombre

1031PR CALI HEATHER OMBRE TOP
Modern Classic Fit

This breathable, super comfortable Heather Basics top features classic v-neck, moisture-wicking, elastic side panels and 2 side entry pockets. Stretch rib trim on both sides.

SIZES: XXS-3X
LENGTH SIZE S: 26 5/8"



002 Black

012 Navy

077 Charcoal

038 Caribbean

020 Royal Blue

122 Heather Grey

061 Wine

042 True Ceil

373 BECCA TOP
Modern Classic Fit

Popular lightweight v-neck top with 4 pockets, including a hidden cell phone pocket.

SIZES: XXS-5X
LENGTH SIZE S: 26"



002 Black

012 Navy

077 Charcoal

038 Caribbean

020 Royal Blue

061 Wine

042 True Ceil

374 KATIE TOP
Modern Classic Fit

Modern lightweight mock-wrap top with stylish rib trim and 4 pockets.

SIZES: XXS-5X
LENGTH SIZE S: 27"



002 Black

012 Navy

020 Royal Blue

122 Heather Grey

1011 KADE TOP

Modern Classic Fit

Lightweight easy-fit v-neck top
with chest pocket.

SIZES: XXS-5X
LENGTH SIZE S: 26 ½"



002 Black

012 Navy

077 Charcoal

122 Heather Grey

450 ANDREA JACKET

Modern Classic Fit

Contemporary zipper-front jacket with
ribbed collar and cuffs and 4 pockets.

SIZES: XXS-5X
LENGTH SIZE S: 28"

LIGHTWEIGHT
&
BREATHABILITY
MOISTURE
WICKING
HIGH
PERFORMANCE
STRETCH
WRINKLE FREE

VISIT OUR WEBSITE FOR
ADDITIONAL STYLES + COLORS
WWW.KOIHAPPINESS.COM

PLEASE CHECK WITH YOUR RETAILER
FOR AVAILABILITY.



For customer service,
call **800.828.4526**

SOLID

95% POLYESTER

5% SPANDEX

HEATHER

90% POLYESTER

10% SPANDEX

FADE

SHRINK RESISTANT



5
POCKETS

- 002 Black
- 012 Navy
- 020 Royal Blue
- 122 Heather Grey

741 GEMMA JOGGER
Contemporary Fit

Our super comfy jogger-style pants with wide elastic waistband and 5 pockets.

(R) XXS-3X (28" inseam)
(P) XXS-3X (27" inseam)
(T) XS-XL (30" inseam)



6
POCKETS

- 002 Black
- 012 Navy
- 077 Charcoal
- 038 Caribbean
- 020 Royal Blue
- 122 Heather Grey
- 061 Wine
- 042 True Ceil

732 LAURIE PANT
Modern Classic Fit

Ultra comfortable lightweight pants with yoga-style waist and 6 pockets.

(R) XXS-5X (31" inseam)
(P) XXS-3X (29" inseam)
(T) XS-XL (33" inseam)



Unique koi
Basics facing



8
POCKETS

- 002 Black
- 012 Navy
- 077 Charcoal
- 038 Caribbean
- 020 Royal Blue
- 122 Heather Grey
- 061 Wine
- 042 True Ceil

731 HOLLY PANT
Modern Classic Fit

Lightweight cargo-style pants with drawstring tie at waist and 8 handy pockets.

(R) XXS-5X (31" inseam)
(P) XXS-3X (29" inseam)
(T) XS-XL (33" inseam)



- 002 Black
- 012 Navy
- 077 Charcoal

448 HAYDEN JACKET

Modern Classic Fit

Stylish, lightweight men's jacket with rib collar and cuffs, zipper front, 4 pockets and side slits.

SIZES: XXS-5X
LENGTH SIZE L: 29"



668 BRYAN MEN'S TOP

Contemporary Fit

Great everyday men's top with classic v-neck, chest pocket with multiple compartments, moisture-wicking and side slit. Lightweight, easy care, stretch.

SIZES: XS-5X
LENGTH SIZE L: 30 1/4"

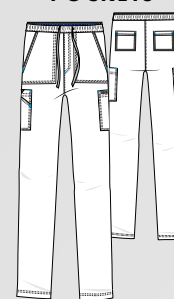


- 002 Black
- 012 Navy
- 077 Charcoal

- 020 Royal Blue
- 122 Heather Grey
- 042 True Ceil



POCKETS



605 LUKE MEN'S PANT

Contemporary Fit

Stylish, functional, lightweight men's pants. Elastic waistband with drawstring ties, 7 handy pockets including hidden cell phone pocket. Easy care, stretch.

(S) XS-3X (30" inseam)
(R) XS-5X (32" inseam)
(T) XS-3X (34" inseam)

LIGHTWEIGHT
&
BREATHABILITY
MOISTURE WICKING
HIGH PERFORMANCE
STRETCH
WRINKLE FREE

VISIT OUR WEBSITE FOR
ADDITIONAL STYLES + COLORS
WWW.KOIHAPPINESS.COM

PLEASE CHECK WITH YOUR RETAILER
FOR AVAILABILITY.



For customer service,
call **800.828.4526**

SOLID

95% POLYESTER

5% SPANDEX

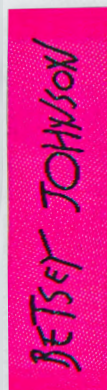
HEATHER

90% POLYESTER

10% SPANDEX

FADE

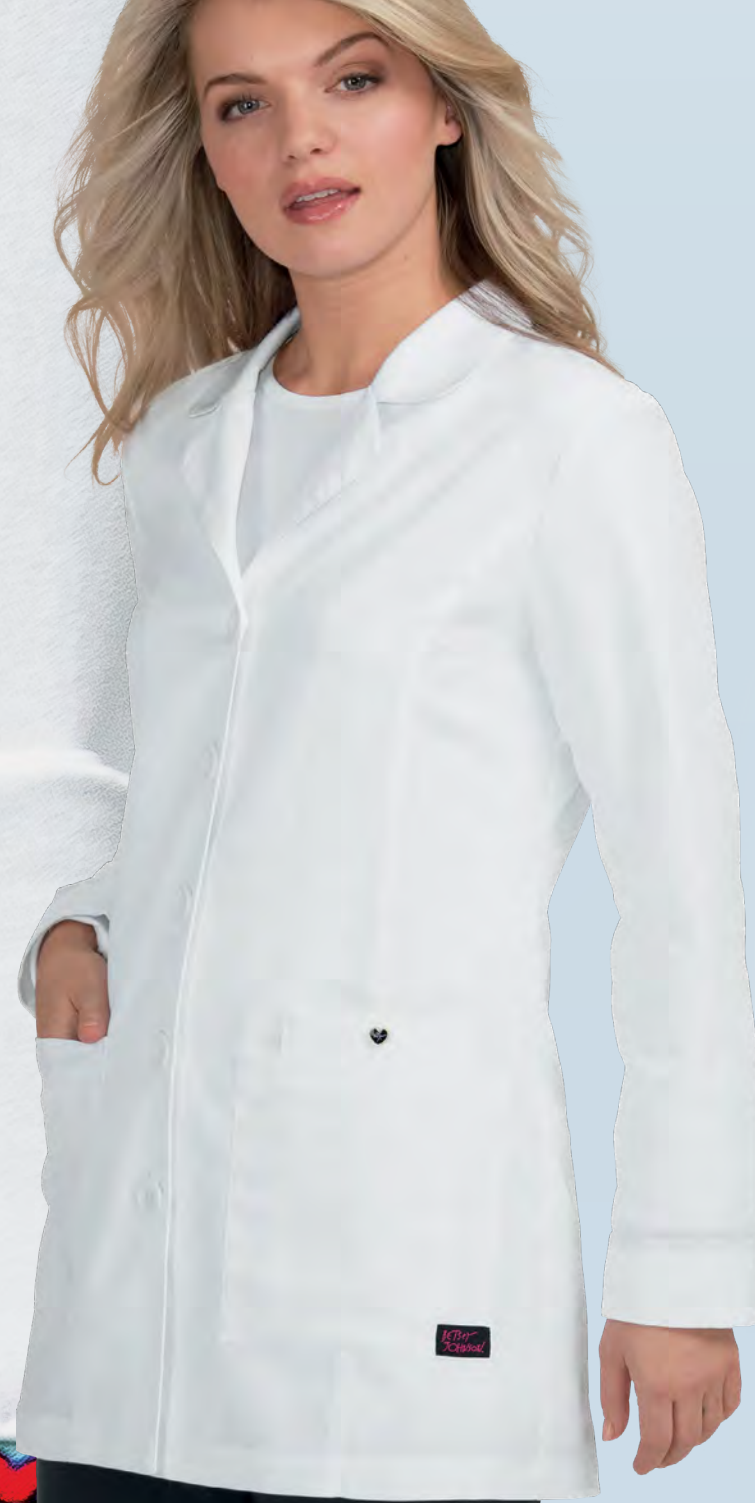
SHRINK RESISTANT



TAILORED TO PERFECTION

When it comes to lab coats, we don't do generic. Instead, we combine modern styling and high-performance fabrics with old school attention to detail to create tailored garments that meet your professional needs and reflect your group's personality.

To most people, a lab coat isn't an everyday purchase. We think if you're going to own a lab coat for a long time, you should love it.





Performance Stretch
Lightweight fabric / Comfort
Easy movement



Professional Stretch
Premium stretch fabric / Moisture-wicking
Easy care

PROFESSIONAL LAB COATS

AND

JACKETS



Heavy Twill
Premium heavy fabric
Extra durability



Stretch Twill
Lightweight yet durable
Easy care



Heavy Poplin
Cotton heavyweight construction

STRETCH TWILL

77% Polyester, 20% Rayon,
3% Spandex Stretch Twill

Our lightweight easy-care stretch
twill fabric that has just the right
amount of stretch!

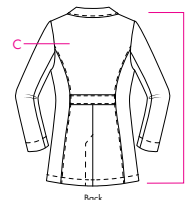
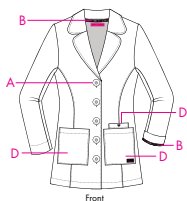
B400

MARIGOLD LAB COAT

Modern Classic Fit

SIZES: XXS-3X

- A. Button-front with 5 buttons
- B. Print facing at neck & cuffs
- C. Lightweight, easy care, stretch fabric
- D. 3 pockets in front, including cell
phone pocket with button snap
- E. Length Size S: 32"



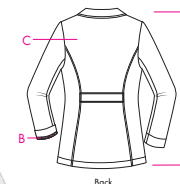
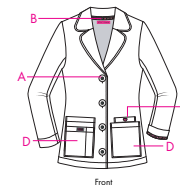
B402

CANNA LAB COAT

Contemporary Fit

SIZES: XXS-3X

- A. Button-front with 4 buttons
- B. Print facing at neck & cuffs
- C. Lightweight, easy care, stretch fabric
- D. 4 pockets in front including pen slot and
cell phone pocket with button snap
- E. Length Size S: 29 1/2"



Print facing at neck and cuffs

PERFORMANCE STRETCH



100% Polyester

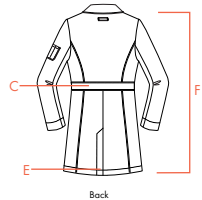
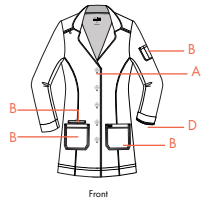
Our performance stretch fabric offers superior comfort and easy movement all day long.

457 HER EVERYDAY LAB COAT

Modern Classic Fit

SIZES: XXS-5X

- A. Button-front
- B. 4 pockets, including sleeve pocket
- C. Stitched in belt in back
- D. Contrast print fabric at neck, cuffs and welt pocket interior
- E. Back vent
- F. Length size S: 35"

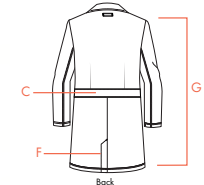
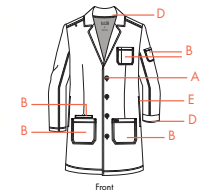


456 HIS EVERYDAY LAB COAT

Modern Classic Fit

SIZES: XS-5X

- A. Button-front
- B. 5 pockets, including sleeve pocket
- C. Stitched in belt in back
- D. Contrast print fabric at neck, cuffs and welt pocket interior
- E. Slits in side seams for easy access to pants pockets
- F. Back vent
- G. Length size L: 38"



VISIT OUR WEBSITE
WWW.KOIHAPPINESS.COM

PLEASE CHECK WITH YOUR
RETAILER FOR AVAILABILITY.



For customer service,
call **800.828.4526**

HEAVY TWILL

55% Cotton, 45% Polyester Heavy Twill

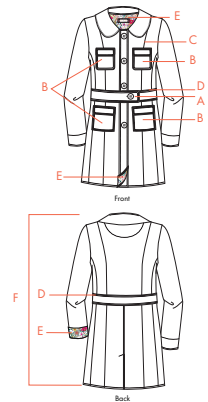
Made from our premium heavy twill fabric for extra durability!

BEST SELLER

408 GENEVA LAB COAT

Modern Classic Fit

SIZES: XXS-3X



- A. Button-front with fold-over tab at waist
- B. 4 front pockets
- C. Princess cut for more shape
- D. Stitched-in belt (front and back)
- E. Print facing at placket, neck and cuffs
- F. Length Size S: 34 3/4"

PROFESSIONAL STRETCH

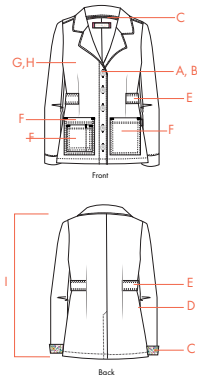
93% Polyester, 7% Spandex

Our premium-grade stretch fabric offers moisture-wicking, easy-care and a look that's always professional.

451 JANICE LAB COAT

Modern Classic Fit

SIZES: XXS-3X



- A. Button-front
- B. Cross-stitch button detail
- C. Print facing at neck & cuffs
- D. Less boxy than traditional lab coats
- E. Side waist tabs for shaping
- F. 3 roomy front pockets plus pen pocket
- G. Moisture-wicking fabric
- H. Wrinkle-, fade- and shrink-resistant
- I. Length Size S: 31 1/2"

FINE TWILL

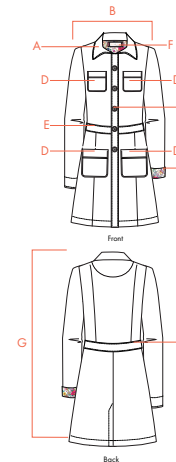
55% Cotton, 45% Polyester Soft Twill

Made from our premium-fine twill fabric for lightweight comfort and durability.

419 REBECCA LAB COAT

Modern Classic Fit

SIZES: XXS-3X



- A. Pointed shirt collar
- B. Tailored fit
- C. Button-front
- D. 4 patch pockets
- E. Stitched-in belt (front and back)
- F. Print facing at neck and cuffs
- G. Length Size S: 35 3/4"

Print facing at cuffs



HEAVY POPLIN

65% Polyester, 35%
Cotton Heavy Poplin

Heavyweight construction
at a value price!

BEST SELLER

G3400

HAMPTON LAB COAT

Modern Classic Fit

SIZES: XS-3X



Front



Back



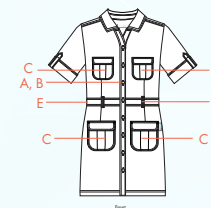
- A. Button-front
- B. Cross-stitch button detail
- C. Less boxy than traditional lab coats
- D. Side waist tabs for shaping
- E. 2 patch pockets
- F. Shorter length
- G. Length Size S: 31 1/4"

905

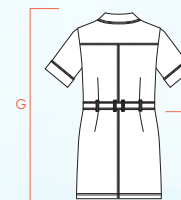
ALEXANDRA DRESS

Contemporary Fit

SIZES: XS-3X



Front



Back



- A. Easy-snap button-front
- B. Epoxy logo buttons for a touch of class
- C. 4 roomy pockets
- D. Stitched-in belt
- E. Slightly dropped waist
- F. Knee length
- G. Length Size S: 39 3/4"

*Can also be worn open as a lab coat

001 White

002 Black

VISIT OUR WEBSITE
WWW.KOIHAPPINESS.COM

PLEASE CHECK WITH YOUR
RETAILER FOR AVAILABILITY.



For customer service,
call **800.828.4526**

LAB
COATS
& JACKET



JACQUARD KNIT

96% Polyester, 4% Spandex

Our lightweight easy-care stretch twill fabric that has just the right amount of stretch!

BEST SELLER

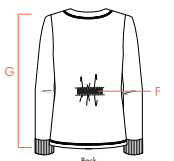
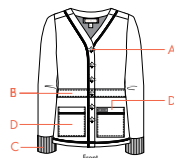
440

CLAIRE KNIT JACKET

Modern Classic Fit

SIZES: XXS-3X

- A. Button-front, cardigan style
- B. Floral jacquard knit
- C. Rib trim at cuffs
- D. 2 patch pockets
- E. Stitched-in belt in front
- F. Elastic inset in back
- G. Length Size S: 29 1/2



001 White

002 Black

012 Navy

077 Charcoal



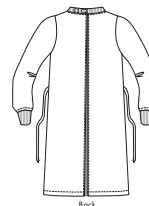
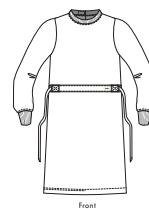
906

UNISEX CLINICAL COVER GOWN

Modern Classic Fit

SIZES: XS/M, M/XL, 2X/3X

Modern clinical cover gown that's ultra soft and constructed with breathable stretch fabric. Reinforced belt straps, ribbed cuffs and Velcro closure at back of neck.



002 Black

122 Heather Grey

130 Heather Galaxy



PROFESSIONAL LAB COATS

AND

JACKETS

VISIT OUR WEBSITE FOR
ADDITIONAL STYLES + COLORS
WWW.KOIHAPPINESS.COM

PLEASE CHECK WITH YOUR RETAILER
FOR AVAILABILITY.

BETSEY JOHNSON.

koim THE NEXT
GEN

orange



B402
CANNA
LAB COAT

Contemporary Fit

SIZES: XXS-3X
LENGTH: 29 1/2"



B400
MARIGOLD
LAB COAT

Modern Classic Fit

SIZES: XXS-3X
LENGTH: 32"



457
HER EVERYDAY
LAB COAT

Modern Classic Fit

SIZES: XXS-5X
LENGTH: 35"



456
HIS EVERYDAY
LAB COAT

Modern Classic Fit

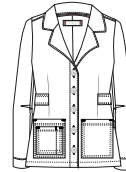
SIZES: XS-5X
LENGTH: 38"



408
GENEVA
LAB COAT

Modern Classic Fit

SIZES: XXS-3X
LENGTH: 34 3/4"



451
JANICE
LAB COAT

Modern Classic Fit

SIZES: XXS-3X
LENGTH: 31 1/2"



419
REBECCA
LAB COAT

Modern Classic Fit

SIZES: XXS-3X
LENGTH: 35 3/4"



G3400
HAMPTON
LAB COAT

Modern Classic Fit

SIZES: XS-3X
LENGTH: 31 1/4"



905
ALEXANDRA
DRESS

Contemporary Fit

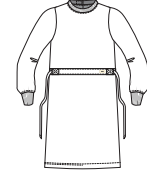
SIZES: XS-3X
LENGTH: 39 1/4"



440
CLAIRE KNIT
JACKET

Modern Classic Fit

SIZES: XXS-3X
LENGTH: 29 1/2"



906
UNISEX CLINICAL
COVER GOWN

SIZES: XS/M, M/XL,
2X/3X

LENGTH: 46"

001 White

002 Black

012 Navy

077 Charcoal

122 Heather Grey

130 Heather Galaxy

LAB
COATS
& JACKET

MATRIX FOR WOMEN'S STYLES

FIND THE RIGHT STYLES FOR YOUR GROUP

When choosing garments for your group, we recommend choosing scrub tops and pants from the same collection to maintain a consistent look among your team. This also allows for the best possible color matching. Recommended group styles for each collection are shown in the matrix.



1010
READY TO WORK
TOP
Modern Classic Fit
SIZES: XXS-5X
LENGTH SIZE S: 26 1/2"



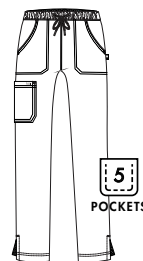
1019
HUSTLE & HEART
TOP
Modern Classic Fit
SIZES: XXS-5X
LENGTH SIZE S: 27"



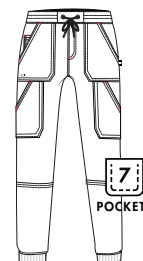
1009
BACK IN ACTION
TOP
Modern Classic Fit
SIZES: XXS-5X
LENGTH SIZE S: 27"



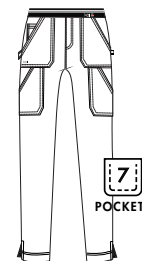
458
ALWAYS IN MOTION
JACKET
Modern Classic Fit
SIZES: XXS-5X
LENGTH SIZE S: 26 1/2"



739
EVERYDAY HERO
PANT
Modern Classic Fit
(R) XXS-5X
(P) XXS-3X
(T) XS-XL
LEG OPENING: 7 3/4"



740
GOOD VIBE
JOGGER
Contemporary Fit
(R) XXS-5X
(P) XXS-3X
(T) XS-XL
LEG OPENING: 4 3/4"



738
ON THE RUN
PANT
Contemporary Fit
(R) XXS-5X
(P) XXS-3X
(T) XS-XL
LEG OPENING: 7 1/4"



316
PHILOSOPHY
TOP
Modern Classic Fit
SIZES: XXS-5X
LENGTH SIZE S: 26"



317
SERENITY
TOP
Modern Classic Fit
SIZES: XXS-5X
LENGTH SIZE S: 27"



1041
VIVACIOUS
TOP
Classic Fit
SIZES: XXS-5X
LENGTH SIZE S: 27"



370PR
REFORM
TOP
Modern Classic Fit
SIZES: XXS-5X
LENGTH SIZE S: 26 5/8"

BEST SELLER

002 Black		
012 Navy		
077 Charcoal		
038 Caribbean Blue		
020 Royal Blue		
122 Heather Grey		
061 Wine		

370PR-FL02	Flamingo/Black Ombre
370PR-TC12	True Ceil/Navy Ombre
370PR-EB12	Electric Blue/Navy Ombre
370PR-RY02	Ruby/Black Ombre
042 True Ceil	

VISIT OUR WEBSITE FOR
ADDITIONAL STYLES + COLORS
WWW.KOIHAPPINESS.COM

PLEASE CHECK WITH YOUR RETAILER
FOR AVAILABILITY.

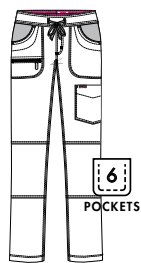
KOI BASICS | EST. 2006
Awesome scrubs. Great price.



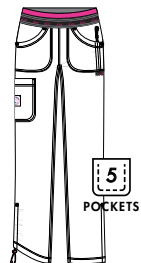
315
DIVINE
TEE
Contemporary Fit
SIZES: XXS-5X
LENGTH SIZE S: 26"



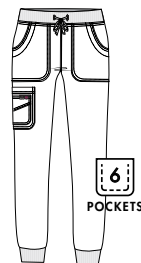
445
CLARITY
JACKET
Modern Classic Fit
SIZES: XXS-3X
LENGTH SIZE S: 27"



721
PEACE
PANT
Modern Classic Fit
(R) XXS-5X
(P) XXS-5X
(T) XS-3X
LEG OPENING: 8 1/2"



720
SPIRIT
PANT
Modern Classic Fit
(R) XXS-5X
(P) XXS-5X
(T) XS-3X
LEG OPENING: 9"



750
FIERCE
JOGGER
Contemporary Fit
(R) XXS-5X
(P) XXS-5X
(T) XS-3X
LEG OPENING: 4 5/8"

Neon Pink Contrast at Waistband



373
BECCA
TOP
Modern Classic Fit
SIZES: XXS-5X
LENGTH SIZE S: 26"



374
KATIE
TOP
Modern Classic Fit
SIZES: XXS-5X
LENGTH SIZE S: 27"



1011
KADE
TOP
Modern Classic Fit
SIZES: XXS-5X
LENGTH SIZE S: 26 1/2"



1031PR
CALI
TOP
Modern Classic Fit
SIZES: XXS-5X
LENGTH SIZE S: 26 5/8"



450
ANDREA
JACKET
Modern Classic Fit
SIZES: XXS-5X
LENGTH SIZE S: 28"

BEST SELLER

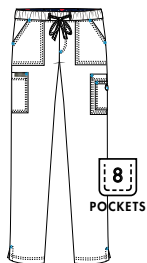
1031PR-HP02
Heather Grey Ombre
1031PR-HG12
Heather Galaxy Ombre
1031PR-HW77
Heather Wisteria Ombre

MATRIX FOR WOMEN'S STYLES

FIND THE RIGHT STYLES FOR YOUR GROUP

When choosing garments for your group, we recommend choosing scrub tops and pants from the same collection to maintain a consistent look among your team. This also allows for the best possible color matching. Recommended group styles for each collection are shown in the matrix.

KOI BASICS EST. 2006
Awesome scrubs. Great price.

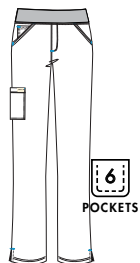


731
HOLLY
PANT

Modern Classic Fit
(R) XXS-5X
(P) XXS-3X
(T) XS-XL

LEG OPENING: 8 3/4"

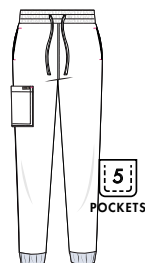
BEST SELLER



732
LAURIE
PANT

Modern Classic Fit
(R) XXS-5X
(P) XXS-3X
(T) XS-XL

LEG OPENING: 9 1/8"



741
GEMMA
JOGGER

Contemporary Fit
(R) XXS-5X
(P) XXS-3X
(T) XS-XL

LEG OPENING: 4 1/4"

002 Black

012 Navy

077 Charcoal

038 Caribbean Blue

020 Royal Blue

122 Heather Grey

061 Wine

042 True Ceil

KOI
CLASSICS™



137
KATELYN
TOP

Modern Classic Fit
SIZES: XXS-5X
LENGTH SIZE S: 27 1/4"

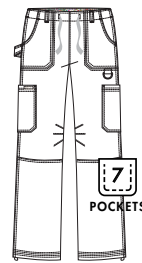
BEST SELLER



247
NICOLE
TOP

Modern Classic Fit
SIZES: XXS-5X
LENGTH SIZE S: 26"

BEST SELLER

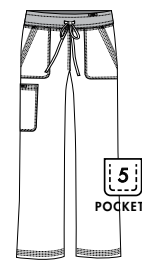


701
LINDSEY
PANT

Modern Classic Fit
(R) XXS-5X
(P) XXS-3X
(T) XS-3X

LEG OPENING: 9 3/4"

BEST SELLER



713
MORGAN
PANT

Modern Classic Fit
(R) XXS-3X
(P) XXS-3X
(T) XS-XL

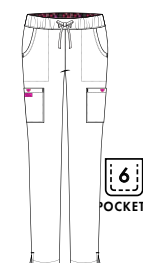
LEG OPENING: 9 3/8"

BEST SELLER



B101
FREESIA
TOP

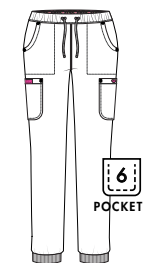
Modern Classic Fit
SIZES: XXS-3X
LENGTH SIZE S: 27"



B700
BUTTERCUP
PANT

Contemporary Fit
(R) XXS-3X
(P) XXS-3X
(T) XS-XL

LEG OPENING: 7 1/4"



B703
ASTER
JOGGER

Contemporary Fit
(R) XXS-3X
(P) XXS-3X
(T) XS-XL

LEG OPENING: 5"

BETSEY JOHNSON

022 Ruby

058 Flamingo

073 Raspberry

MATRIX FOR MEN'S STYLES

VISIT OUR WEBSITE FOR
ADDITIONAL STYLES + COLORS
WWW.KOIHAPPINESS.COM

PLEASE CHECK WITH YOUR RETAILER
FOR AVAILABILITY.

KOI NEXT
GEN

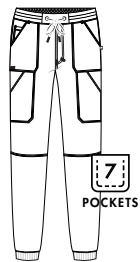
koi lite
PERFORMANCE STRETCH

KOI BASICS EST. 2006
Awesome scrubs. Great price.

koi CLASSICS



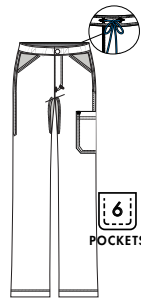
671
ON CALL
TOP
Contemporary Fit
SIZES: XXS-5X
LENGTH SIZE L: 30 1/4"



608
DAY TO NIGHT
JOGGER
Contemporary Fit
(R) XXS-5X
(S) XXS-3X
(T) XS-3X
LEG OPENING: 5"



667
FORCE
TOP
Contemporary Fit
SIZES: XS-3X
LENGTH SIZE L: 31 1/2"



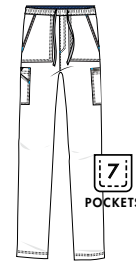
606
DISCOVERY
PANT
Contemporary Fit
(R) XS-3X
(S) XS-3X
(T) XS-3X
LEG OPENING: 8 1/2"



668
BRYAN
TOP
Contemporary Fit
SIZES: XXS-5X
LENGTH SIZE L: 30 1/4"



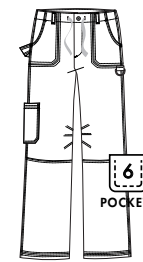
448
HAYDEN
JACKET
Modern Classic Fit
SIZES: XS-3X
LENGTH SIZE L: 29"



605
LUKE
PANT
Contemporary Fit
(R) XS-5X
(S) XS-3X
(T) XS-3X
LEG OPENING: 9 1/8"



654
JASON
TOP
Modern Classic Fit
SIZES: XS-3X
LENGTH SIZE L: 31 1/4"



601
JAMES
PANT
Modern Classic Fit
(R) XS-3X
(P) XS-3X
(T) XS-3X
LEG OPENING: 10 1/8"

BEST SELLER

BEST SELLER

Mediocre Is Not In Our DNA


At koi, we make our fabric pass 21 separate tests before putting our name on it. Our team is fastidious about getting the fit right. We add little design details that other scrub companies can't be bothered with. Tweaking, testing and re-engineering is in our DNA. Some might call it obsessive.

It's all part of our mission to make the best scrubs you will ever love.

We are all about designing happiness. One stitch at a time.

koihappiness.com

 /koistyle

 @koihappiness #koiscrubs

Fax orders
310.828.0099

Customer service
800.828.4526

