



ACTIVE STYLING

# Work Hard, Look Smart

This mini-collection combines a professional look with high-performance features like contrast mesh panels, which add breathability and ease of movement, so they look and feel great all shift long.



ULTRA SOFT



TWO-WAY  
STRETCH



EASY CARE



WOMEN'S ACTIVE STYLES



**WW601**  
**V-Neck Top**  
XXS-5XL (26")

**Fabric**  
78 Poly/20 Rayon/  
2 Spandex Twill

**Product Details**

- Modern Classic fit
- Two patch pockets
- Instrument loops in right pocket
- Mesh neckband and panels
- Front and back shoulder yokes
- Front vents
- Shirttail hem
- Reflective label and tape

**Available Colors**



**WW698**  
**Snap Front Polo Shirt**  
XXS-5XL (24")

**Fabric**  
78 Poly/20 Rayon/  
2 Spandex Twill

**Product Details**

- Modern Classic fit
- Snap front closure
- Welt chest pocket
- Mesh side panels
- Reflective label
- Side vents

**Available Colors**





**WW602**  
**Round Neck Top**  
**XXS-5XL (26")**

**Fabric**  
78 Poly/20 Rayon/  
2 Spandex Twill

**Product Details**

- Modern Classic fit
- Two patch pockets
- Cellphone pocket
- Mesh yoke and panels
- Instrument loops
- Zipper detail at neckline
- Reflective label and tape
- Side vents

**Available Colors**



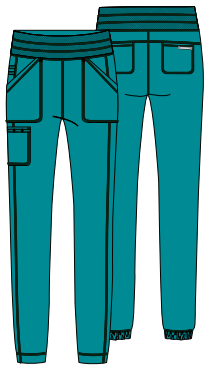
**WW301**  
**Zip Front High-Low Jacket**  
**XXS-5XL (27")**

**Fabric**  
78 Poly/20 Rayon/  
2 Spandex Twill

**Product Details**

- Modern Classic fit
- Two patch pockets
- Cellphone pocket
- Rib-knit cuffs
- Mesh yoke and panels
- Heat transfer logo
- Instrument loops
- Reflective label and tape

**Available Colors**



**WW011/P/T**  
**Natural Rise Jogger**

**XXS-5XL (29")**  
**[P] XXS-2XL (26½")**  
**[T] XS-2XL (32")**

**Fabric**  
78 Poly/20 Rayon/  
2 Spandex Twill

**Product Details**

- Modern Classic fit
- Mesh on elasticized waistband
- Five pockets: two front patch pockets, cargo pocket, two back patch pockets
- Instrument loops
- Stylized hem
- Reflective label and tape
- Tapered leg, 11" opening

**Available Colors**



**MEN'S ACTIVE STYLES**



**WW603**  
**Men's V-Neck Top**  
**XS-5XL (28½")**

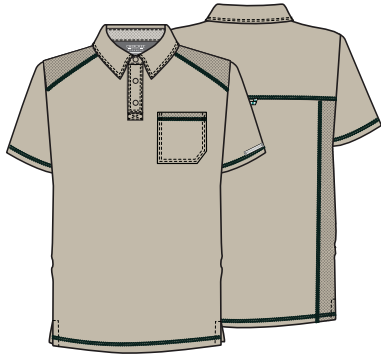
**Fabric**  
78 Poly/20 Rayon/  
2 Spandex Twill

**Product Details**

- Men's fit
- Chest pocket, zip front pocket
- Instrument loop above zip pocket
- Mesh yoke and panels
- Locker loop
- Reflective label and tape

**Available Colors**





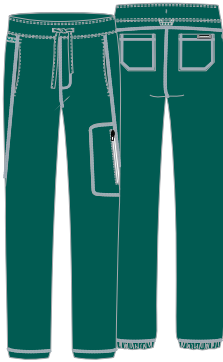
**WW615**  
**Men's Polo Shirt**  
**XS-5XL (28½")**

**Fabric**  
78 Poly/20 Rayon/  
2 Spandex Twill

**Product Details**

- Men's Modern fit
- Chest pocket
- Mesh yoke and panels
- Locker loop
- Reflective label

**Available Colors**



**WW012/S/T**  
**Men's Jogger**

**XS-5XL (31")**  
**[S] XS-3XL (28½")**  
**[T] S-2XL (34")**

**Fabric**  
78 Poly/20 Rayon/  
2 Spandex Twill

**Product Details**

- Men's fit
- Elastic waistband with drawstring
- Five pockets: two front slash pockets, side seam zip pocket, two back pockets
- Instrument and locker loops
- Stylized hem
- Reflective label and tape
- Straight leg, 12" opening

**Available Colors**



**COLOR and  
STYLE MATRIX**

Colors and styles listed  
in order of popularity.

Styles and colors featured  
are reorderable and Poly/  
Rayon/Spandex Twill.

Center back lengths and  
inseams are listed in  
parentheses.



**WW011/P/T**  
Natural  
Rise Jogger

XXS-5XL (29")  
[P] XXS-2XL (26½")  
[T] XS-2XL (32")



**WW601**  
V-Neck  
Top

XXS-5XL  
(26")



**WW301**  
Zip Front  
High-Low Jacket

XXS-5XL  
(27")



**WW602**  
Round  
Neck Top

XXS-5XL  
(26")



**WW698**  
Snap Front  
Polo Shirt

XXS-5XL  
(24")



**WW012/S/T**  
Jogger

XS-5XL (31")  
[S] XS-3XL (28½")  
[T] S-2XL (34")



**WW615**  
Polo  
Shirt

XS-5XL  
(28½")



**WW603**  
V-Neck  
Top

XS-5XL  
(28½")

**WOMEN'S ACTIVE STYLES**

**MEN'S ACTIVE STYLES**

	WW011/P/T	WW601	WW301	WW602	WW698	WW012/S/T	WW615	WW603
Black (BLK)								
Navy (NAV)								
Pewter (PWT)								
Royal (ROY)					style not available in this color		style not available in this color	
Wine (WIN)			style not available in this color					
Ciel Blue (CIE)			style not available in this color	style not available in this color	style not available in this color		style not available in this color	
Caribbean Blue (CAR)			style not available in this color	style not available in this color	style not available in this color		style not available in this color	
Hunter (HUN)			style not available in this color	style not available in this color	style not available in this color		style not available in this color	
Teal Blue (TLB)			style not available in this color	style not available in this color	style not available in this color		style not available in this color	
Red (RED)			style not available in this color	style not available in this color		style not available in this color		style not available in this color
Khaki (KAK)	style not available in this color	style not available in this color	style not available in this color	style not available in this color		style not available in this color		style not available in this color



## Next-Level Softness

Slip into our softest, smoothest, most comfortable fabric ever.



ULTRA SOFT



TWO-WAY STRETCH

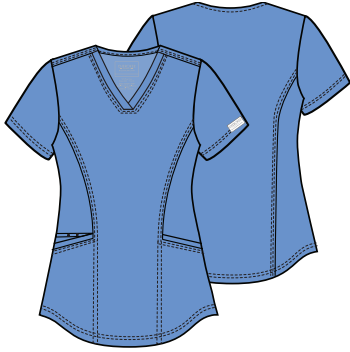


EASY CARE



Model is wearing: **WW2875**  
V-Neck Top in Wine





**WW612P**  
**Petite V-Neck Top**  
**XXS-3XL (24")**

**Fabric**  
78 Poly/20 Rayon/  
2 Spandex Twill

**Product Details**

- Modern Classic fit
- Two inset pockets
- Elastic instrument loops above right pocket
- Front and back princess seams
- Shirttail hem

**Available Colors**



**WW622**  
**Snap Front V-Neck Top**  
**XXS-5XL (26")**

**Fabric**  
78 Poly/20 Rayon/  
2 Spandex Twill

**Product Details**

- Modern Classic fit
- Knit inset at neckline
- Four pockets: two front top entry patch pockets, two side angle entry pockets
- Logo label with bungee loop
- Front yoke seams
- Bust darts
- Back princess seams
- Side vents

**Available Colors**



**WW2875** **NEW COLOR**  
**V-Neck Knit Panel Top**  
**XXS-5XL (24½")**

**Fabric**  
78 Poly/20 Rayon/  
2 Spandex Twill

**Product Details**

- Modern Classic fit
- Kangaroo pocket
- Front and back yoke seams
- Black knit side panels (Navy knit side panels on Navy)

**Available Colors**



\* Navy side panels

**New Color**



**WW657**  
**V-Neck O.R. Top** **TUCK-IN STYLE**  
**XXS-5XL (26")**

**Fabric**  
78 Poly/20 Rayon/  
2 Spandex Twill

**Product Details**

- Modern Classic fit
- Chest pocket
- Front and back yokes
- Curved hem
- Side vents

**Available Colors**





**WW620** NEW COLOR

### V-Neck Top

XXS-5XL (27")

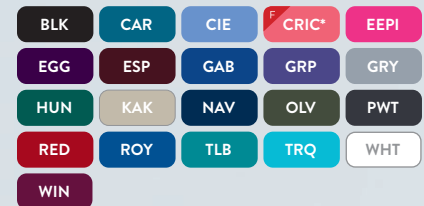
#### Fabric

78 Poly/20 Rayon/  
2 Spandex Twill

#### Product Details

- Modern Classic fit
- Three pockets: patch pocket with instrument loop on left, double patch pocket on right
- Logo label with bungee loop
- Back princess seams
- Side vents

#### Available Colors



#### New Color



\* XS-3XL



**WW669**

### Snap Front Collared Shirt

XXS-5XL (26")

#### Fabric

78 Poly/20 Rayon/  
2 Spandex Twill

#### Product Details

- Modern Classic fit
- Two side-seam pockets and a chest pocket
- Hidden snap front placket
- Back pleat
- Curved hem
- Side vents

#### Available Colors





**WW610**  
**Mock Wrap Top**  
**XXS-5XL (26")**

**Fabric**  
78 Poly/20 Rayon/  
2 Spandex Twill

**Product Details**

- Modern Classic fit
- Two patch pockets
- Hidden instrument loops
- Logo label with bungee loop
- Front and back princess seams
- Front shoulder yokes
- Side vents

**Available Colors**



**WW521**  
**Zip Front Knit Vest**  
**XS-5XL (26")**

**Fabric**  
92 Poly/8 Spandex  
Brushed Jersey Knit

**Product Details**

- Modern Classic fit
- Three pockets: patch pockets, hidden zipper pocket
- Front and back princess seams

**Available Colors**





### WW310 Snap Front Jacket

XXS-5XL (27½")

**Fabric**  
78 Poly/20 Rayon/  
2 Spandex Twill

#### Product Details

- Modern Classic fit
- Two patch pockets and interior cellphone pocket
- Logo label with bungee loop
- Hidden instrument loop
- Front and back princess seams
- Back yoke
- Rib-knit cuffs

#### Available Colors



### WW371 Zip Front Knit Jacket

XS-5XL (26")

**Fabric**  
92 Poly/8 Spandex  
Brushed Jersey Knit

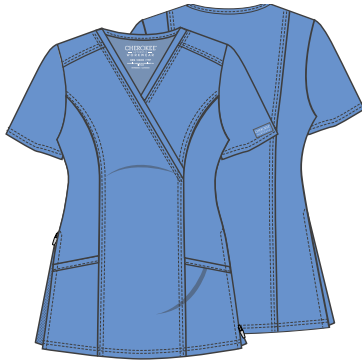
#### Product Details

- Modern Classic fit
- Three pockets: patch pockets, hidden zipper pocket
- Front and back princess seams
- Knit cuffs

#### Available Colors



## MATERNITY STYLES



### WW688 Maternity Mock Wrap Top

XXS-3XL (27")

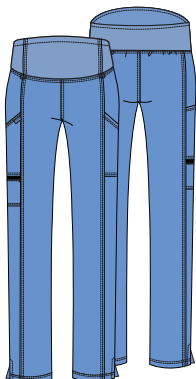
**Fabric**  
78 Poly/20 Rayon/  
2 Spandex Twill

*Please order your  
pre-pregnancy size.*

#### Product Details

- Maternity fit
- Two patch pockets
- Front shoulder yokes
- Front and back princess seams
- Soft knit front panels
- Side zip gussets with mesh insets allow room to grow

#### Available Colors



### WW155/P/T Maternity Pull-on Pant

XXS-3XL (30")  
[P] XS-2XL (27½")  
[T] S-XL (33")

**Fabric**  
78 Poly/20 Rayon/  
2 Spandex Twill

*Please order your  
pre-pregnancy size.*

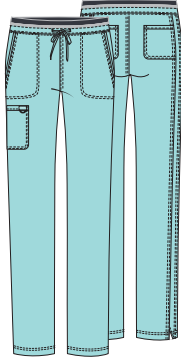
#### Product Details

- Maternity fit
- Soft knit waistband
- Three pockets: two cargo pockets, zip pocket on right
- Bungee loops at waist
- Side vents
- Slim-straight leg, 15" opening

#### Available Colors







**WW105/P/T** **NEW COLOR**  
**Mid Rise Drawstring Cargo Pant**

**XXS-5XL (31")**  
[P] **XXS-2XL (28½")**  
[T] **XS-2XL (34")**

**Fabric**  
78 Poly/20 Rayon/  
2 Spandex Twill

**Product Details**

- Modern Classic fit
- Five pockets: slash pockets, cargo pocket, back pockets
- Elastic knit waistband
- Logo label with bungee loop
- Tapered leg, 15" opening

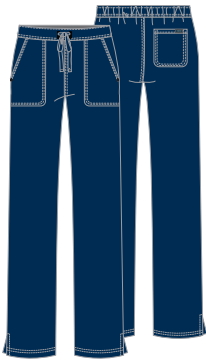
**Available Colors**



**New Color**



\* Pewter waistband. [R] XS-3XL.  
[P] XS-2XL. Not available in Tall



**WW005/P/T**  
**Mid Rise Drawstring Pant**

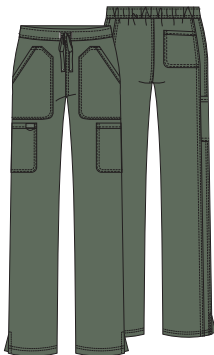
**XXS-5XL (31")**  
[P] **XXS-2XL (28½")**  
[T] **XS-2XL (34")**

**Fabric**  
78 Poly/20 Rayon/  
2 Spandex Twill

**Product Details**

- Modern Classic fit
- Front patch pockets
- Back pocket
- Back elastic waistband
- Side vents
- Straight leg, 16½" opening

**Available Colors**



**WW120/P/T**  
**Mid Rise Drawstring Cargo Pant**

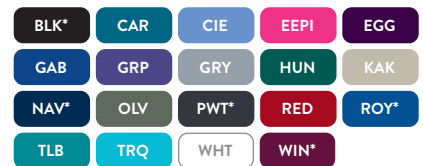
**XXS-5XL (31")**  
[P] **XXS-2XL (28½")**  
[T] **XS-2XL (34")**

**Fabric**  
78 Poly/20 Rayon/  
2 Spandex Twill

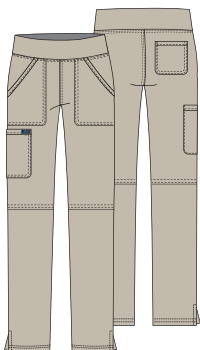
**Product Details**

- Modern Classic fit
- Front patch and cargo pockets
- Back pocket
- Back elastic waistband
- Logo label with bungee loop
- Side vents
- Moderate flare leg, 18½" opening

**Available Colors**



\* [P] XXS-3XL



**WW110/P/T**  
**Mid Rise Pull-on Cargo Pant**

**XXS-5XL (31")**  
[P] **XXS-2XL (28½")**  
[T] **XS-2XL (34")**

**Fabric**  
78 Poly/20 Rayon/  
2 Spandex Twill

**Product Details**

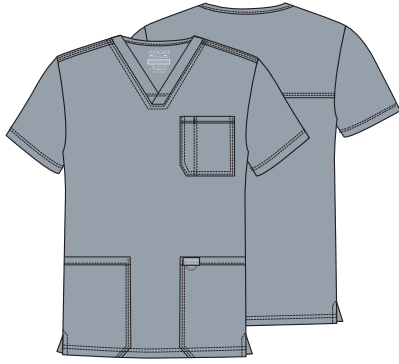
- Modern Classic fit
- Elastic-reinforced knit waistband
- Four pockets: front patch pockets, cargo pocket and back pocket
- Logo label with bungee loop
- Side vents
- Straight leg, 18" opening

**Available Colors**



\* [P] XXS-3XL

## MEN'S STYLES


**WW670**  
**Men's V-Neck Top**

XS-5XL (29")

**Fabric**  
 78 Poly/20 Rayon/  
 2 Spandex Twill
**Product Details**

- Men's fit
- Chest pocket with pencil stitch
- Two patch pockets
- Logo label with bungee loop
- Back yoke
- Side vents

**Available Colors**
**WW690**  
**Men's V-Neck Top**

XS-5XL (29")

**Fabric**  
 78 Poly/20 Rayon/  
 2 Spandex Twill
**Product Details**

- Men's fit
- Chest pocket with pen slot
- Logo label with bungee loop
- Locker loop
- Back yoke
- Side vents

**Available Colors**
**WW380**  
**Men's Snap Front Jacket**

XS-5XL (30")

**Fabric**  
 78 Poly/20 Rayon/  
 2 Spandex Twill
**Product Details**

- Men's fit
- Three pockets: patch pockets and chest pocket
- Locker loop
- Logo label with bungee loop
- Rib-knit cuffs

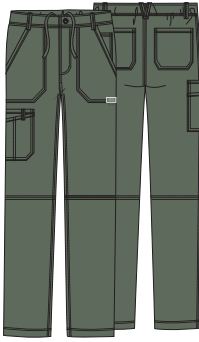
**Available Colors**
**WW320**  
**Men's Zip Front Jacket**

XS-5XL (27")

**Fabric**  
 78 Poly/20 Rayon/  
 2 Spandex Twill
**Product Details**

- Men's fit
- Five pockets: patch pockets, welt chest pocket, cellphone pocket, sleeve zip pocket
- Logo label with bungee loop
- Locker loop
- Rib-knit cuffs

**Available Colors**



### WW140/S/T Men's Fly Front Cargo Pant

**XS-5XL (32")**  
**[S] XS-3XL (29½")**  
**[T] S-2XL (35")**

**Fabric**  
78 Poly/20 Rayon/  
2 Spandex Twill

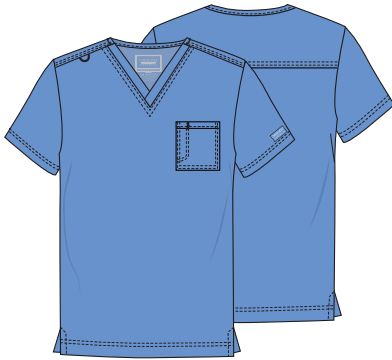
#### Product Details

- Men's fit
- Back elastic waistband with inside drawstring
- Zip fly with button closure
- Five belt loops
- Seven pockets: double cargo pocket, patch pockets, back pockets, accessory pocket
- Logo label with bungee loop
- Tapered leg, 19" opening

#### Available Colors



## UNISEX STYLES



### WW625 Unisex V-Neck Top

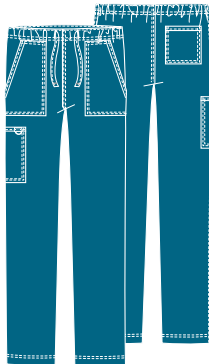
**XXS-5XL (27½")**

**Fabric**  
78 Poly/20 Rayon/  
2 Spandex Twill

#### Product Details

- Unisex fit
- Chest pocket with pen slot
- Bungee loop at shoulder seam
- Back yoke
- Side vents

#### Available Colors



### WW020/S/T Unisex Drawstring Cargo Pant

**XXS-5XL (31")**  
**[S] XXS-3XL (28½")**  
**[T] XS-2XL (34")**

**Fabric**  
78 Poly/20 Rayon/  
2 Spandex Twill

#### Product Details

- Unisex fit
- Four pockets: patch pockets, cargo pocket, back pocket
- Elastic waistband with drawstring
- Bungee instrument loop
- Tapered leg, 16½" opening

#### Available Colors



### WW550 Bouffant Scrubs Hat

**OS**

**Fabric**  
78 Poly/20 Rayon/  
2 Spandex Twill

#### Product Details

- Unisex fit
- Front pleats add fullness for complete hair coverage
- Interior terry-cloth sweatband
- Elastic back with adjustable tie

#### Available Colors









