



CHEROKEE[®]
— MEDICAL —
UNIFORMS

FALL 2021

SEASONAL PRODUCT GUIDE



CONTENTS

What's New

WORKWEAR ORIGINALS	03	1 New Style: Kids' Set
WORKWEAR REVOLUTION	04	3 New Core Colors: Caribbean Blue, Ciel and Wine 1 New Fashion Color: Blushing Coral
EUPHORIA	06	8 New Styles: Women's jacket, tops and pants, Men's jacket, top and pant
ALLURA	09	1 New Style: Women's top 3 New Core Colors: Galaxy Blue, Hunter, Violet Garden
INFINITY	11	4 New Styles: Women's tops and pants 1 New Fashion Color: Purple Nitro 7 New Prints
FORM	15	2 New Core Colors: Galaxy Blue and Olive Branch
IFLEX	17	Multiple New Core Colors for Existing Styles: Ciel, Caribbean Blue, Wine and Hunter
KATIE DUKE	19	2 New Styles: Women's top and pant 2 New Fashion Socks
IFLEX PRINTS	20	6 New Prints
TOONIFORMS	22	18 New Disney Prints (including 4 Scrubs Hats) 21 New Non-Disney prints (including 9 Scrubs Hats and 1 Kids' Set)
GENUINE PRINTS	38	14 New Prints (including 5 Scrubs Hats)



Timeless and trusted since 1995

The scrubs collection that started it all, Cherokee Originals continues to offer the comfort, durability, and classic good looks that make it a favorite of present – and future – generations of healthcare pros.



DURABLE



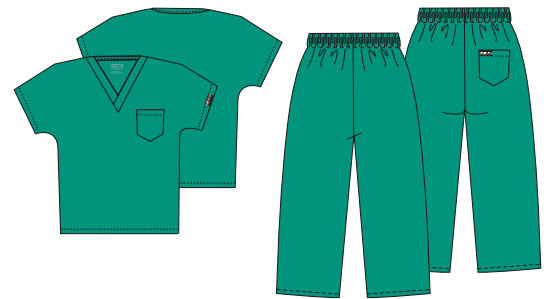
SOIL RELEASE



EASY CARE

LIMITED EDITION

WW540C Kids' Scrub Set



XS-XL Kids' Set
Center back length: 17"
Inseam: 19"

Fabric
65 Poly/35 Cotton Poplin

Product Details

- Unisex fit
- Two pockets: chest pocket, pant back pocket
- Elastic waist

Available Colors

Navy (NAVW)

Surgical Green
(SGRW)

Ever-expanding to fit who you are

Cherokee Workwear Revolution steps up with even more options in color, style, and fit, including a bigger selection of Maternity tops and pants, and a bright new fashion hue for Fall.



ULTRA SOFT



TWO-WAY
STRETCH



EASY CARE

WOMEN'S STYLES

WW620 V-Neck Top



XS-3XL (27")

Fabric
78 Poly/20 Rayon/2 Spandex Twill

Product Details

- Modern Classic fit
- Three pockets: double patch pockets on right with instrument loop, patch pocket on left with pen slot
- Logo label with bungee loop
- Back princess seams
- Side vents

New Color

F Blushing Coral
(CRIC)

WW2875 V-Neck Knit Panel Top



XXS-5XL (24½")

Fabric
78 Poly/20 Rayon/2 Spandex Twill

Product Details

- Modern Classic fit
- Kangaroo pocket
- Front and back yoke seams
- Black knit side panels

New Colors

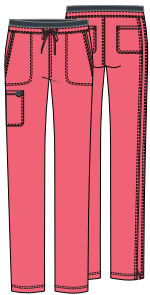
Ciel (CIE)

Wine (WIN)

MATERNITY STYLES

NOTES

WW105/P
Mid Rise
Drawstring Pant



XS-3XL (31")
[P] XS-2XL (28½")

Fabric
78 Poly/20 Rayon/2 Spandex Twill

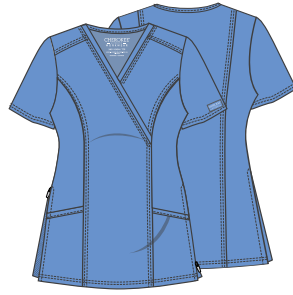
Product Details

- Modern Classic fit
- Knit covered elastic waistband with drawstring
- Five pockets: two front pockets, cargo pocket, two back pockets
- Logo label with bungee loop
- Tapered leg, 15" opening
- Pewter waistband

New Color

Blushing Coral (CRIC)

WW688
Maternity Mock
Wrap Top



XXS-3XL (27")

Fabric
78 Poly/20 Rayon/2 Spandex Twill

Product Details

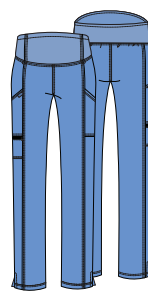
- Maternity fit
- Two patch pockets
- Front shoulder yokes
- Front and back princess seams
- Soft knit front panels
- Side zip gussets with mesh insets allow room to grow

Please order your pre-pregnancy size.

New Colors

Caribbean Blue (CAR) **Ciel (CIE)**
Wine (WIN)

WW155
Maternity
Pull-on Pant



XXS-3XL (30")

Fabric
78 Poly/20 Rayon/2 Spandex Twill

Product Details

- Maternity fit
- Soft knit waistband
- Three pockets: two cargo pockets, zip pocket on right
- Bungee loops at waist
- Slim-straight leg, 15" opening
- Side vents

Please order your pre-pregnancy size.

New Colors

Caribbean Blue (CAR) **Ciel (CIE)**
Wine (WIN)

NEW COLLECTION

All-new and future-forward

This new, socially responsible collection is crafted with supremely soft and sustainable Sorona® fiber and integrated Certainty® antimicrobial fabric technology to minimize the bacteria that cause odors and fabric degradation.



**FOUR-WAY
STRETCH**




**CERTAINTY®
TECHNOLOGIES**



BREATHABLE

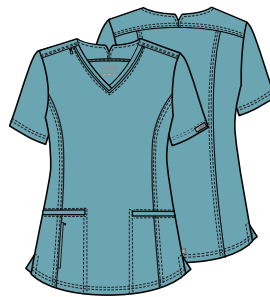


For extra protection, Certainty® antimicrobial fabric technology has been added to all Euphoria garments. Wash all items thoroughly after each use. Items featuring antimicrobial technology do not protect users or others against bacteria, viruses, or disease organisms. Always follow all best practices for infection prevention. Visit [CertaintyTechnologies.com](https://www.CertaintyTechnologies.com) for details.

 Fashion (available while supplies last)

WOMEN'S STYLES

CK786A V-Neck Top



XXS-5XL (26")

Fabric

60 Poly/18 Rayon/19 Elastereil-P with Sorona®/3 Spandex Twill

Product Details

- Contemporary fit
- Self piping at neckline
- Bungee ID badge loop at front yoke
- Three pockets: two welt pockets, zip security pocket
- Front and back princess seams
- Notched back neckline
- Curved back yoke seam
- Rounded hem
- Side vents

Available Colors



* XS-3XL

CK788A Tuckable V-Neck Top



XXS-5XL (26")

Fabric

60 Poly/18 Rayon/19 Elastereil-P with Sorona®/3 Spandex Twill

Product Details

- Contemporary fit
- Bungee ID badge loop at neckline
- Two pockets: chest pocket with self piping, zip security pocket on sleeve
- Curved back yoke seam with self piping
- Rounded hem
- Side vents

Available Colors



* XS-3XL

MEN'S STYLES

CK387A Snap Front Jacket



XXS-5XL (27")

Fabric

60 Poly/18 Rayon/19 Elastrell-P
with Sorona®/3 Spandex Twill

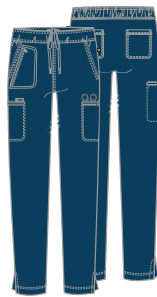
Product Details

- Contemporary fit
- Notched collar
- Four pockets: zip security pocket, two in-seam pockets, utility pocket
- Front and back yoke seams
- Front princess seams
- Rib-knit cuffs with thumbholes

Available Colors



CK140A/P/T Mid Rise Drawstring Pant



XXS-5XL (30")
[P] XXS-2XL (27½")
[T] XS-2XL (33")

Fabric

60 Poly/18 Rayon/19 Elastrell-P
with Sorona®/3 Spandex Twill

Product Details

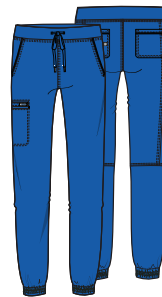
- Contemporary fit
- Inside drawstring with interior elastic waistband
- Eight pockets: two side angled pockets, zip security pocket on right, two welt cargo pockets, hidden scissors pocket, two back pockets
- Self piping on side angled pockets and back pockets
- Side vents
- Tapered leg, 14" opening

Available Colors



* XS-3XL, [P] XS-2XL

CK260A/P/T Mid Rise Jogger



XXS-5XL (28½")
[P] XXS-2XL (25½")
[T] XS-2XL (31½")

Fabric

60 Poly/18 Rayon/19 Elastrell-P
with Sorona®/3 Spandex Twill

Product Details

- Contemporary fit
- Elastic-reinforced knit waistband with drawstring
- Six pockets: two side angled pockets, welt cargo pocket, zip security pocket, two back pockets
- Piping on side angled pockets and back pockets
- Back leg seams
- Elasticized cuffs
- Tapered leg, 10" opening

Available Colors



* XS-3XL, [P] XS-2XL

CK887A Men's Tuckable V-Neck Top



XS-5XL (28")

Fabric

60 Poly/18 Rayon/19 Elastrell-P
with Sorona®/3 Spandex Twill

Product Details

- Men's fit
- Two pockets: welt chest pocket, zip security pocket
- Front and back yoke seams
- Bungee ID badge loop on right front yoke seam

Available Colors



CK395A
**Men's Zip
Front Jacket**



XS-5XL (27½")

Fabric

60 Poly/18 Rayon/19 Elasterell-P
with Sorona®/3 Spandex Twill

Product Details

- Men's fit
- Stand-up funnel collar
- Bungee ID badge loop at collar
- Four pockets: chest pocket, zip security pocket, two welt pockets
- Curved back yoke seam with locker loop
- Back seams
- Rib-knit cuffs and waistband

Available Colors

Black (BLK)

Caribbean Blue (CAR)

Ciel (CIE)

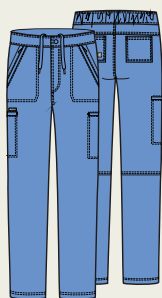
Navy (NAV)

Pewter (PWT)

Royal (ROY)

Wine (WIN)

CK205A/S/T
**Men's Fly Front
Cargo Pant**



XS-5XL (31½")
[S] XS-3XL (29")
[T] S-2XL (34½")

Fabric

60 Poly/18 Rayon/19 Elasterell-P
with Sorona®/3 Spandex Twill

Product Details

- Men's fit
- Interior elastic waistband with inside drawstring
- Zip fly with button closure
- Eight pockets: two front pockets, two zip security pockets, two welt cargo pockets, two back pockets
- Back yoke seam
- Back knee seams
- Tapered leg, 16" opening

Available Colors

Black (BLK)

Caribbean Blue (CAR)

Ciel (CIE)

Navy (NAV)

Pewter (PWT)

Royal (ROY)

Wine (WIN)

Inspired by the power of teamwork

Introduced in 2020, the Allura collection offers a perfect mix of form and function with four-way stretch, enhanced moisture wicking, and even more styles designed to fit and flatter a range of body types.

The Allura by Cherokee collection is available to retailers with brick-and-mortar stores who meet certain qualifications. Please contact your account executive for details.



4-WAY STRETCH



MOISTURE WICKING



EASY CARE

WOMEN'S STYLES

CKA690
Tuckable V-Neck Top

XXS-5XL (26½")

Fabric
90 Poly/10 Spandex Poplin**Product Details**

- Contemporary fit
- Two pockets: chest pocket, back zip pocket
- Front yoke seams
- Back princess seams
- Rounded high-low hem
- Side vents

Available Colors

Black (BLK)	Ciel (CIE)
Caribbean Blue (CAR)	Galaxy Blue (GAB)
Hunter (HUN)	Navy (NAV)
Pewter (PWT)	Royal (ROY)
Teal Blue (TLB)	Wine (WIN)

CKA684
V-Neck Top

XS-3XL (26")

Fabric
90 Poly/10 Spandex Poplin**Product Details**

- Contemporary fit
- Three pockets: two front angled patch pockets, zip cell phone pocket on right
- Front and back princess seams
- Back shoulder yokes
- Side vents

New Colors

Galaxy Blue (GAB)	Hunter (HUN)
-------------------	--------------

CKA685
V-Neck Top

XXS-3XL (26")

Fabric
90 Poly/10 Spandex Poplin**Product Details**

- Contemporary fit
- Three pockets: two front patch pockets, zip cell phone pocket on the right
- Front and back yoke seams
- Front side panels
- Bungee ID badge loop
- Shirttail hem
- Side vents

New Colors

Galaxy Blue (GAB)	Hunter (HUN)
Violet Garden (VGRD)*	

* XS-3XL

CKA184/P/T
Mid Rise Drawstring PantXXS-5XL (29")
[P] XXS-2XL (26½")
[T] XS-2XL (32")**Fabric**
90 Poly/10 Spandex Poplin**Product Details**

- Contemporary fit
- Interior elastic waistband
- Five pockets: two front angled pockets, zip cargo pocket, two back patch pockets
- Forward-wrapping side seam
- Tapered leg, 14" opening

New Colors

Galaxy Blue (GAB)	Hunter (HUN)
Violet Garden (VGRD)*	

* Regular XS-3XL, [P] XS-2XL, No Tall

WOMEN'S STYLE

CKA190/P/T

Mid Rise Jogger



XXS-5XL (28½")
[P] XXS-2XL (26")
[T] XS-2XL (31½")

Fabric

90 Poly/10 Spandex Poplin

Product Details

- Contemporary fit
- Elastic-reinforced rib-knit waistband with interior drawstring
- Five pockets: two front pockets, zip cargo pocket, two back pockets
- Side panels
- Curved back yoke seam
- Rib-knit cuffs
- Tapered leg, 9" opening

New Colors

Galaxy Blue (GAB)

Hunter (HUN)

MEN'S STYLES

CKA686

Men's V-Neck Top



XS-5XL (28")

Fabric

90 Poly/10 Spandex Poplin

Product Details

- Men's fit
- Three pockets: chest pocket, two front patch pockets
- Bungee ID badge loop at neckline
- Back yoke seam
- Side vents

New Colors

Galaxy Blue (GAB)

Hunter (HUN)

CKA689

Men's Tuckable V-Neck Top



XS-5XL (28")

Fabric

90 Poly/10 Spandex Poplin

Product Details

- Men's fit
- Two pockets: chest pocket, back zip security pocket
- Back yoke seam
- Back seams
- Side vents

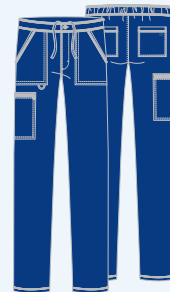
New Colors

Galaxy Blue (GAB)

Hunter (HUN)

CKA186/S/T

Men's Fly Front Cargo Pant



XS-5XL (32")
[S] XS-2XL (29½")
[T] XS-2XL (35")

Fabric

90 Poly/10 Spandex Poplin

Product Details

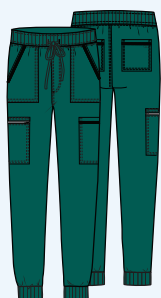
- Men's fit
- Elastic-reinforced waistband with inside drawstring
- Zip fly with button closure
- Five pockets: two patch pockets, zip cargo pocket, two back patch pockets
- Bungee ID badge loop on front pocket
- Straight leg, 16" opening

New Colors

Galaxy Blue (GAB)

Hunter (HUN)

CKA189/S/T Men's Fly Front Cargo Pant



XS-5XL (32")
[S] XS-2XL (29½")
[T] XS-2XL (35")

Fabric
90 Poly/10 Spandex Poplin

Product Details

- Men's fit
- Elastic-reinforced rib-knit waistband with drawstring
- Six pockets: two front pockets, zip cargo pocket, patch cargo pocket, two back pockets
- Rib-knit cuffs
- Tapered leg, 10" opening

New Colors

Galaxy Blue (GAB)

Hunter (HUN)

Moving forward

Infinity innovates with brand-new styles, including a scrubs cardigan, and great new options for Women and Men.



**FOUR-WAY
STRETCH**



**CERTAINTY®
TECHNOLOGIES**



**MOISTURE
WICKING**

For extra protection, Certainty® antimicrobial fabric technology has been added to all Infinity solid-color and colorblock garments. Infinity prints do not have Certainty technology at this time. Wash all items thoroughly after each use. Items featuring antimicrobial technology do not protect users or others against bacteria, viruses, or disease organisms. Always follow all best practices for infection prevention. Visit CertaintyTechnologies.com for details.

LIMITED EDITION

CK747A Round Neck Top



XS-3XL (26")

Fabric
95 Poly/5 Spandex Heathered Poplin

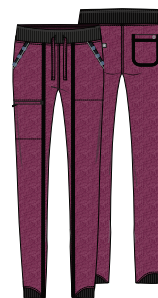
Product Details

- Contemporary fit
- Rib-knit inset at neckline
- Four pockets: two patch pockets, two angled pockets
- Pen slot on right patch pocket
- Front and back yoke seams
- Front and back princess seams
- Rib-knit center back panel
- Shirttail hem
- Side vents

Available Colors



CK147A/P/T Mid Rise Jogger



XS-3XL (27½")

Fabric
95 Poly/5 Spandex Heathered Poplin

Product Details

- Contemporary fit
- Rib-knit covered elastic waistband with drawstring
- Four pockets: two front pockets, zip cargo pocket, back pocket
- Front leg seams
- Shaped rib-knit cuffs
- Tapered leg, 9½" opening

Available Colors



LIMITED EDITION

WOMEN'S STYLES

CK327 Open Front Cardigan



XS-2XL (27")

Fabric

89 Poly/11 Spandex Stripe Jersey

Product Details

- Contemporary fit
- Fold-over shawl collar
- Two front pockets with pen slots
- Front yoke seams
- Back princess seams
- Long sleeves with thumbholes

Available Colors

CK872A Polo Shirt



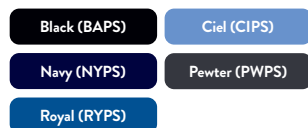
XXS-5XL (26")

Fabric

95 Poly/5 Spandex Poplin

Product Details

- Contemporary fit
- Open placket
- Three pockets: two front welt pockets, welt utility pocket
- Front yoke seams
- Bungee badge ID loop on right shoulder yoke
- Elbow-length sleeves with vents
- Front and back princess seams
- Rib-knit center back panel
- Shirttail hem

Available Colors

2624A Round Neck Top



XS-3XL (26")

Fabric

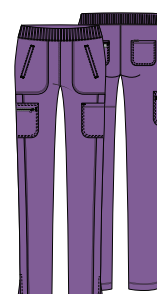
95 Poly/5 Spandex Poplin

Product Details

- Contemporary fit
- Three pockets: two patch pockets, interior pocket
- Rib-knit inset at front neckband and back panel
- Shoulder yokes
- Bungee ID badge loop
- Side vents

New Color

CK065A/P/T Mid Rise Pull-on Pant



XS-3XL (30½")
[P] XS-2XL (28")
[T] XS-XL (33½")

Fabric

95 Poly/5 Spandex Poplin

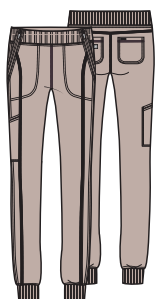
Product Details

- Contemporary fit
- Elastic-reinforced rib-knit waistband
- Six pockets: two front welt pockets, two cargo pockets, two back pockets
- Front leg seams
- Side vents
- Tapered leg, 14" opening

New Color

MEN'S STYLE

CK110A/P Mid Rise Jogger Pant



XXS-5XL (28")
[P] XXS-2XL (25½")

Fabric

95 Poly/5 Spandex Poplin

Product Details

- Contemporary fit
- Elastic-reinforced rib-knit waistband
- Five pockets: two front angled zipper pockets, cargo pocket with reflective tape, two back patch pockets
- Front leg seams
- Rib-knit cuffs
- Tapered leg, 12½" opening

New Color

Khaki (KAK)

CK332A Men's Zip Front Jacket



XS-5XL (29½")

Fabric

95 Poly/5 Spandex Poplin

Product Details

- Men's fit
- Stand-up collar
- Three pockets: in-seam chest pocket, two angled front zip pockets
- Front and back yoke seams
- Rib-knit panels on the sides and inner sleeve panels

New Color

Royal (RYPS)

NEW PRINTS

Poppin' Floral (PLFO)



CK880
XS-3XL (26")

Fabric

94 Poly/6 Spandex Poplin

Contrast

Black (BAPS)

Pockets

Patch Pockets, Cell Phone Pocket

Coordinating Colors

Black (BAPS), Carmine Pink (CPPS), Pewter (PWPS), Purple Nitro (PUNI), Teal Blue (TLPS), Turquoise (TRQ), White (WTPS)

Loving Lines (LVLS)



CK656
XS-3XL (26")

Fabric

94 Poly/6 Spandex Poplin

Contrast

Black (BAPS)

Pockets

Patch Pockets, Interior Pockets

Coordinating Colors

Black (BAPS), Carmine Pink (CPPS), Purple Nitro (PUNI), Teal Blue (TLPS), Turquoise (TRQ), White (WTPS)

NEW PRINTS

Colorful Confetti (CFTT)



CK608
XS-3XL (26")

Fabric
94 Poly/6 Spandex Poplin

Contrast
Navy (NYPS)

Pockets
Set-in Pockets, Interior Pocket

Coordinating Colors
Carmine Pink (CPPS), Navy (NYPS), Purple Nitro (PUNI), White (WTPS)

Tie Dye Trip (TYTP)



CK609
XXS-5XL (26")

Fabric
94 Poly/6 Spandex Poplin

Contrast
Purple Nitro (PUNI)

Pockets
Patch Pockets, Interior Pocket

Coordinating Colors
Black (BAPS), Carmine Pink (CPPS), Purple Nitro (PUNI), Teal Blue (TLPS), White (WTPS)

Wild Mesh (WIMH)



CK608
XS-3XL (26")

Fabric
94 Poly/6 Spandex Poplin

Contrast
Black (BAPS)

Pockets
Set-in Pockets, Interior Pockets

Coordinating Colors
Black (BAPS), Purple Nitro (PUNI), Teal Blue (TLPS), White (WTPS)

Butterfly Bouquets (BUBQ)



CK634
XXS-5XL (26")

Fabric
94 Poly/6 Spandex Poplin

Contrast
Black (BAPS), Purple Nitro (PUNI)

Pockets
Welt Pockets, Pen Slot

Coordinating Colors
Black (BAPS), Grey (GRY), Pewter (PWPS), Purple Nitro (PUNI), Teal Blue (TLPS), White (WTPS)

MEN'S PRINT

Cool Down Camo (CLDC)



CK920
XS-5XL (29½")

Fabric

94 Poly/6 Spandex Poplin

Contrast

Black (BAPS)

Pockets

Chest Pocket, Welt Pockets

Coordinating Colors

Olive (OLPS), Black (BAPS),
Hunter Green (HNPS),
Pewter (PWPS), White (WTPS)

Command performance

An elegant array of styles and colors for Women and Men, crafted from one of the most versatile, durable, and flattering performance fabrics in the industry.



360° STRETCH



MOISTURE WICKING



EASY CARE

WOMEN'S STYLE

CK840 V-Neck Top



XXS-3XL (26")

Fabric

86 Nylon/14 Spandex Knit

Product Details

- Contemporary fit
- Two welt pockets
- Power mesh trim on neck band and sleeve hems
- Shoulder yoke panels
- Back princess seams
- Shirttail hem

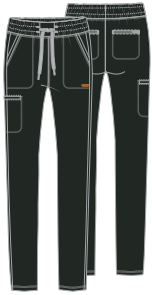
New Colors

Galaxy Blue (GAB)

Olive Branch (OLBA)

WOMEN'S STYLE

CK095/P/T Mid Rise Drawstring Pant



XXS-3XL (29")
[P] XXS-2XL (26½")
[T] XS-2XL (32")

Fabric
 86 Nylon/14 Spandex Knit

Product Details

- Contemporary fit
- Encased elastic waistband
- Five pockets: two angled front pockets, zip cargo pocket, two back zip pockets
- Tapered leg, 9½" opening

New Colors



* No Tall

MEN'S STYLES

CK399 Men's Zip Front Jacket



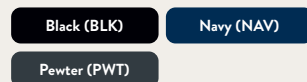
XS-3XL (27½")

Fabric
 86 Nylon/14 Spandex Knit

Product Details

- Men's fit
- Stand-up collar
- Four pockets: zipper chest pocket, two welt pockets, hidden mesh cell phone pocket inside right pocket
- Stylized front seams
- Sleeve seams
- Curved back yoke seam
- Back seams
- Cuffs and banded bottom

Available Colors



CK885 Men's Tuckable V-Neck Top



XS-3XL (28")

Fabric
 86 Nylon/14 Spandex Knit

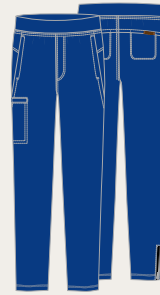
Product Details

- Men's fit
- Chest pocket
- Front and back yokes
- Hidden power mesh inset at back yoke
- Angled back side seams
- Underarm power mesh panels

New Colors



CK185/S/T Men's Pull-on Cargo Pant



XS-3XL (31")
[S] XS-3XL (28½")
[T] S-2XL (34")

Fabric
 86 Nylon/14 Spandex Knit

Product Details

- Men's fit
- Encased elastic waistband
- Mock fly front closure
- Five pockets: two front slash pockets, zip cargo pocket, two back in-seam pockets
- Reflective piping at zipper vents
- Tapered leg, 14½" opening

New Colors



* No Tall

Now for Men and Women

You asked, we flexed. This Fall, guys can find iFlex scrubs in three more core colors, and women can choose from seven cute new styles.



4-WAY STRETCH



MOISTURE WICKING



KNIT PANELS

WOMEN'S STYLES

CK711 V-Neck Top



XXS-3XL (26")

Fabric

94 Poly/6 Spandex
Crosshatch Dobby

Product Details

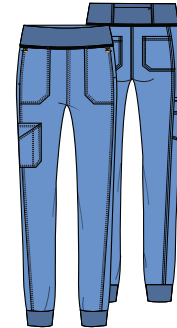
- Contemporary fit
- Knit neckband, yokes, sleeve insets, and side panels
- Four pockets: two front patch pockets, utility pocket, back pocket
- Self utility loops above right pocket
- Decorative stitching on front patch pockets
- Side vents

New Colors

Caribbean Blue
(CAR)

Ciel (CIE)

CK011/P Mid Rise Jogger



XXS-3XL (29")
[P] **XXS-2XL (27½")**

Fabric

94 Poly/6 Spandex
Crosshatch Dobby

Product Details

- Contemporary fit
- Elastic-reinforced knit waistband
- Seven pockets: two front pockets, double utility cargo pocket with pen slot, two back pockets, security zipper pocket in back waistband
- Front and back leg seams
- Knit cuffs
- Tapered leg, 9" opening

New Colors

Caribbean Blue
(CAR)

Ciel (CIE)

MEN'S STYLES

CK661
Men's V-Neck Top


XS-5XL (29½")

Fabric
 94 Poly/6 Spandex
 Crosshatch Dobby
Product Details

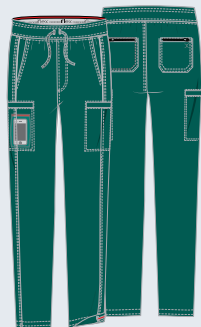
- Men's fit
- Tonal knit neckband
- Four pockets: welt chest pocket with reflective piping, two front patch pockets, hidden cell phone pocket on right
- Front and back shoulder yokes
- Tonal knit back side panels

New Colors

Ciel (CIE)

Hunter (HUN)

Wine (WIN)

CK006/S/T
Men's Drawstring Cargo Pant

 XS-5XL (31½")
 [S] XS-3XL (29")
 [T] S-2XL (34½")

Fabric
 94 Poly/6 Spandex
 Crosshatch Dobby
Product Details

- Men's fit
- Knit waistband with interior logo elastic
- Seven pockets: two front pockets, two cargo pockets, hidden cellphone pocket, two zip back patch pockets
- Reflective piping along side seam
- Flat elastic inside hem for adjustability
- Tapered leg, 15" opening

New Colors

Ciel (CIE)

Hunter (HUN)

Wine (WIN)

Essentially Katie

On-trend and on track, Katie Duke expands her line with two sporty new styles featuring a message of empowerment for fellow essential workers.

**4-WAY STRETCH****MOISTURE WICKING****KNIT PANELS**

All Katie Duke styles featured are Fashion and available while supplies last.

WOMEN'S STYLES

CKK650 Tuckable V-Neck Top



XS-3XL (24")

Fabric
94 Poly/6 Spandex
Crosshatch Dobby

Product Details

- Contemporary fit
- Notched neckband
- Knit inset at neckline
- Two pockets: kangaroo pocket, back pocket
- Curved front yoke seams
- Bungee ID badge loop on right yoke seam
- Front and back princess seams
- Knit side panels
- Rounded hem
- Side vents

Available Colors



CKK150/P/T High Rise Jogger



XS-3XL (28½")
[P] XS-2XL (26")
[T] XS-2XL (31½")

Fabric
94 Poly/6 Spandex
Crosshatch Dobby

Product Details

- Contemporary fit
- Elastic-reinforced waistband with drawstring
- Drawstring features inspirational message
- Knit side panels at waistband and hips
- Six pockets: two front pockets, two cargo pockets with bungee closures, two back pockets
- Knit cuffs
- Tapered leg, 10" opening

Available Colors



CFFTM Cherokee LX Support sock in Coffee Time



S/M (Shoe Size 4H-7H)
M/L (Shoe Size 8-12)

Fabric
Bamboo Fiber Blend

Product Details

- 1 pair pack
- 15-20 mmHg compression
- Soft bamboo fiber naturally resists odor and moisture buildup
- Non-binding band, reinforced heel, and arch support
- Reduces fatigue and swelling while promoting healthy circulation

RXPAD Cherokee LX Support sock in RX Pad



S/M (Shoe Size 4H-7H)
M/L (Shoe Size 8-12)

Fabric
Bamboo Fiber Blend

Product Details

- 1 pair pack
- 15-20 mmHg compression
- Soft bamboo fiber naturally resists odor and moisture buildup
- Non-binding band, reinforced heel, and arch support
- Reduces fatigue and swelling while promoting healthy circulation

Prints for the win

iFlex pairs polyester/spandex crosshatch dobby with soft, knit panels for a flattering fit, then adds some fun with eye-catching new designs.



4-WAY STRETCH



KNIT PANELS

PRINT STYLES

Don't Leave Me Hanging (DNLV)



CK641
XS-3XL (25")

Fabric

93 Poly/7 Spandex Crosshatch Dobby

Contrast

Black (BLK)

Pockets

In-seam Pockets

Coordinating Colors

Black (BLK), Electric Pink (EPEI), Khaki (KAK), Pewter (PWT), Turquoise (TRQ), White (WHT)

Lovely Swirl (LVSW)



CK732
XXS-5XL (25½")

Fabric

93 Poly/7 Spandex Crosshatch Dobby

Contrast

Black (BLK), Navy (NAV)

Pockets

In-seam Pockets

Coordinating Colors

Black (BLK), Electric Pink (EPEI), Purple Nitro (PUNI), Teal Blue (TLB), Turquoise (TRQ), White (WHT)

All styles featured are Fashion and available while supplies last.

**Spotted In The Wild
(SPIW)****CK636**
XS-3XL (26")**Fabric**93 Poly/7 Spandex Crosshatch
Dobby**Contrast**

Pewter (PWT)

PocketsPatch Pockets, Accessory Pocket,
Back Patch Pocket**Coordinating Colors**Black (BLK), Electric Pink (EEPI),
Pewter (PWT), Shocking Pink
(SHPW), White (WHT)**Speckled Spots
(SPCK)****CK642**
XXS-5XL (26")**Fabric**93 Poly/7 Spandex Crosshatch
Dobby**Contrast**

Pewter (PWT)

Pockets

Patch Pockets

Coordinating ColorsCaribbean Blue (CAR), Electric
Pink (EEPI), Pewter (PWT),
Turquoise (TRQ), White (WHT)**Flutter So Bright
(FLSB)****CK732**
XS-3XL (25½")**Fabric**93 Poly/7 Spandex Crosshatch
Dobby**Contrast**

Navy (NAV)

Pockets

In-seam Pockets

Coordinating ColorsElectric Pink (EEPI), Navy (NAV),
Teal Blue (TLB), Turquoise (TRQ),
White (WHT)**Fancy Floral
(FFNY)****CK636**
XS-3XL (26")**Fabric**93 Poly/7 Spandex Crosshatch
Dobby**Contrast**

Navy (NAV)

Pockets

In-seam Pockets

Coordinating ColorsBlack (BLK), Electric Pink (EEPI),
Hunter (HUN), Navy (NAV), Red
(RED), Royal (ROY), Turquoise
(TRQ), White (WHT)

Disney

A Mickey Future (MKYR)



TF677
XXS-3XL (25½")

Fabric
94 Poly/6 Spandex Poplin

Contrast
Black

Pockets
Kangaroo Pocket

Coordinating Colors
Black, Pewter, Red, White

Love and Flowers (MNRW)



TF664
XXS-3XL (26")

Fabric
94 Poly/6 Spandex Poplin

Contrast
Black

Pockets
Patch Pockets

Coordinating Colors
Black, Pewter, Shocking Pink, White

Wonderscape (ALDR)



TF666
XXS-3XL (26")

Fabric
97 Cotton/3 Spandex Poplin

Pockets
Welt Pockets

Coordinating Colors
Black, Navy, Eggplant, Pewter,
Shocking Pink, White

Don't Quit (TBDQ)



TF626
XXS-3XL (26")

Fabric
100 Cotton

Contrast
Pewter

Pockets
Side Angled Pockets

Coordinating Colors
Black, Ciel, Pewter, White

All styles featured are Fashion and available while supplies last.

The Last Petal (BEPE)



TF627
XXS-5XL (25½")

Fabric
95 Poly/5 Spandex Poplin

Contrast
Black

Pockets
Kangaroo Pocket

Coordinating Colors
Black, Pewter, Royal, White

Woodland Stroll (SNNF)



TF732
XXS-3XL (26")

Fabric
97 Cotton/3 Spandex Poplin

Pockets
Side Angled Pockets

Coordinating Colors
Black, Navy, Red, Royal,
Teal Blue, White



TF514
OS

Fabric
97 Cotton/3 Spandex Poplin

Contrast
Pewter Sweatband

Coordinating Colors
Black, Navy, Red, Royal,
Teal Blue, White

Flutter Friends (BAUF)



TF634
XXS-3XL (26")

Fabric
100 Cotton

Contrast
Black

Pockets
Patch Pockets

Coordinating Colors
Black, Shocking Pink,
Teal Blue, White

Disney

Celebrating Me-ow (ACBT)



TF633
XXS-3XL (26")

Fabric
97 Cotton/3 Spandex Poplin

Contrast
Shocking Pink

Pockets
Patch Pockets

Coordinating Colors
Black, Pewter, Shocking Pink,
Teal Blue, White



TF513
OS

Fabric
97 Cotton/3 Spandex Poplin

Contrast
Pewter Sweatband

Features
Snap Tabs by Ears

Coordinating Colors
Black, Pewter, Shocking Pink,
Teal Blue, White

Silly Ol' Bear (PHSR)



TF639
XXS-3XL (26")

Fabric
100 Cotton

Contrast
Black, Shocking Pink

Pockets
Side Angled Pockets

Coordinating Colors
Black, Red, Shocking Pink, White

Nala and Simba (LKNB)



TF664
XXS-3XL (26")

Fabric
94 Poly/6 Spandex Poplin

Contrast
Navy

Pockets
Patch Pockets

Coordinating Colors
Black, Navy, Shocking Pink, White

All styles featured are Fashion and available while supplies last.

Beautiful Darkness (VIID)



TF637
XXS-5XL (25½")

Fabric
95 Poly/5 Spandex Poplin

Contrast
Black

Pockets
Kangaroo Pocket

Coordinating Colors
Black, Pewter, White

Twice as Nice (CDWN)



TF627
XXS-5XL (25½")

Fabric
95 Poly/5 Spandex Poplin

Contrast
Black

Pockets
Kangaroo Pocket

Coordinating Colors
Black, Espresso, White

Fox & Hound (FXAH)



TF637
XXS-5XL (25½")

Fabric
95 Poly/5 Spandex Poplin

Contrast
Black

Pockets
Kangaroo Pocket

Coordinating Colors
Black, White

Lightning McQueen (CSTQ)



TF700 Men's
XS-2XL (29")

Fabric
100 Cotton

Contrast
Pewter

Pockets
Chest Pocket, Kangaroo Pocket

Coordinating Colors
Black, Pewter, Red, White

Disney

HALLOWEEN PRINT

HOLIDAY PRINTS

All Hail Jack (NCHJ)



TF690
XXS-3XL (26")

Fabric
100 Cotton

Contrast
Black

Pockets
Zipper Pockets

Coordinating Colors
Black, Pewter, White

Elsa the Snow Queen (FZRQ)



TF627
XXS-5XL (25½")

Fabric
95 Poly/5 Spandex Poplin

Contrast
Navy

Pockets
Kangaroo Pocket

Coordinating Colors
Black, Navy, White

Kalikimaka (LHLM)



TF638
XXS-5XL (25½")

Fabric
97 Cotton/3 Spandex Poplin

Pockets
Patch Pockets, Accessory Pocket

Coordinating Colors
Black, Red, Royal, White

Holiday Hula (LHHL)



TF512L
OS

Fabric
55 Cotton/42 Poly/3 Spandex Poplin

Contrast
Pewter Sweatband

Features
Snap Tabs by Ears

Coordinating Colors
Black, Red, Royal, White

All styles featured are Fashion and available while supplies last.

NOTES

Peppermint Holiday (MKMT)



TF633
XXS-5XL (26")



TF513
OS

Fabric

94 Poly/6 Spandex Poplin

Contrast

Red

Pockets

Patch Pockets

Coordinating Colors

Black, Pewter, Red, White

Fabric

94 Poly/6 Spandex Poplin

Contrast

Pewter Sweatband

Features

Snap Tabs by Ears

Coordinating Colors

Black, Pewter, Red, White



Way of the Web (MAWY)



TF700 Men's
XS-2XL (29")

Fabric
95 Poly/5 Spandex Poplin

Contrast
Navy

Pockets
Chest Pocket, Kangaroo Pocket

Coordinating Colors
Black, Navy, Red, White

Great Power (MAGP)



TF718
XS-2XL (26")

Fabric
53 Cotton/43 Rayon/4 Spandex
Jersey Knit

Contrast
Red

Coordinating Colors
Black, Red, White

Avengers Forever (MAFE)



TF632
XS-3XL (26")

Fabric
94 Poly/6 Spandex Poplin

Contrast
Black

Pockets
Patch Pockets

Coordinating Colors
Black, Pewter, Red, Royal, White



TF513
OS

Fabric
94 Poly/6 Spandex Poplin

Contrast
Pewter Sweatband

Features
Snap Tabs by Ears

Coordinating Colors
Black, Pewter, Red, Royal, White

All styles featured are Fashion and available while supplies last.

ILLUMINATION PRESENTS
minions
THE RISE OF GRU

Friends Together (DPNV)



TF627
XXS-3XL (25½")

Fabric
95 Poly/5 Spandex Poplin

Contrast
Pewter

Pockets
Kangaroo Pockets

Coordinating Colors
Black, Pewter, White

UNIVERSAL
MONSTERS

Beware Of Monsters (MSUM)



TF686
XXS-3XL (26")

Fabric
95 Poly/5 Spandex Poplin

Contrast
Black

Pockets
Patch Pockets

Coordinating Colors
Black, Pewter, Red, White



TF513
OS

Fabric
95 Poly/5 Spandex Poplin

Contrast
Pewter Sweatband

Features
Snap Tabs by Ears

Coordinating Colors
Black, Pewter, Red, White



NOTES

**Mandalorian
(MDLO)**



TF708 Men's
XXS-5XL (29")

Fabric
95 Poly/5 Spandex Poplin

Contrast
Pewter

Pockets
Kangaroo Pocket

Coordinating Colors
Black, Pewter, White

**Yoda One I Want
(SRYW)**



TF636
XXS-3XL (26")

Fabric
97 Poly/3 Spandex Poplin

Contrast
Black

Pockets
Patch Pockets, Interior Pocket,
Accessory Pocket

Coordinating Colors
Black, Pewter, Shocking Pink, White

**Love My Yoda
(SRVY)**



TF512L
OS

Fabric
55 Cotton/42 Poly/3 Spandex Twill

Contrast
Pewter Sweatband

Features
Snap Tabs by Ears

Coordinating Colors
Black, Pewter, Shocking Pink, White

All styles featured are Fashion and available while supplies last.



Mini Sesame (SWMS)



TF614
XXS-3XL (26")

Fabric

97 Cotton/3 Spandex Poplin

Contrast

Black

Pockets

Patch Pockets, Interior Pocket

Coordinating Colors

Black, Pewter, Red, Royal, White



TF513
OS

Fabric

97 Cotton/3 Spandex Poplin

Contrast

Pewter Sweatband

Features

Snap Tabs by Ears

Coordinating Colors

Black, Pewter, Red, Royal, White



Batman™ (DMDM)



TF730 Men's
XS-3XL (29")

Fabric

94 Poly/6 Spandex Poplin

Contrast

Black

Pockets

Chest Pocket, Sleeve Zip Pocket

Coordinating Colors

Black, Navy, Pewter, White

Sesame Street® and associated characters, trademarks and design elements are owned and licensed by Sesame Workshop. © 2021 Sesame Workshop. All Rights Reserved.

© & ™ DC Comics. (s21)

PEANUTS

HALLOWEEN PRINT

**I'm Cool
(PNML)**



TF614
XXS-3XL (26")

Fabric
100 Cotton

Contrast
Black

Pockets
Patch Pockets, Interior Pocket

Coordinating Colors
Black, Royal, White

**Midnight Pumpkin
(PNMK)**



TF636
XXS-3XL (26")

Fabric
97 Cotton/3 Spandex Poplin

Contrast
Black

Pockets
Welt Pockets

Coordinating Colors
Black, Eggplant, Grape,
Pewter, Teal Blue, White

DREAMWORKS DRAGONS

**Train Your Dragon
(DRHG)**



TF637
XXS-3XL (25½")

Fabric
95 Poly/5 Spandex Poplin

Contrast
Royal

Pockets
Kangaroo Pocket

Coordinating Colors
Black, Royal, White

All styles featured are Fashion and available while supplies last.



WINTER PRINT

Hello Kitty Rainbow
(HKNB)

TF641
XXS-3XL (26")

Fabric

97 Cotton/3 Spandex Poplin

Pockets

Patch Pockets

Coordinating Colors

Black, Pewter, Shocking Pink, White



TF513
OS

Fabric

97 Cotton/3 Spandex Poplin

Contrast

Pewter Sweatband

Features

Snap Tabs by Ears

Coordinating Colors

Black, Pewter, Shocking Pink, White

Winter Hello Kitty
(HKMIC)

TF686
XXS-3XL (26")

Fabric

97 Cotton/3 Spandex Poplin

Contrast

Shocking Pink

Feature

Crystalline

Coordinating ColorsBlack, Turquoise,
Shocking Pink, White



Awesome Mode (PMAM)



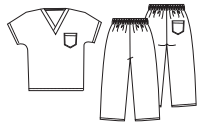
TF636
XXS-3XL (26")

Fabric
97 Cotton/3 Spandex Poplin

Contrast
Black

Pockets
Patch Pockets, Interior Pocket,
Accessory Pocket

Coordinating Colors
Black, Pewter, Red, White



6620C/P/T Kids' Set
S-L

Fabric
97 Cotton/3 Spandex Poplin

Pockets
Chest Pocket, Back Pocket

Coordinating Colors
Black, Pewter, Red, White



TF514
XS-3XL (26")

Fabric
97 Cotton/3 Spandex Poplin

Contrast
Pewter Sweatband

Features
Snap Tabs by Ears

Coordinating Colors
Black, Pewter, Red, White

Game Face (PMMF)



TF704 Men's
XS-2XL (29")

Fabric
100 Cotton

Contrast
Black

Pockets
Kangaroo Pocket, Chest Pocket

Coordinating Colors
Black, Pewter, Red, White

All styles featured are Fashion and available while supplies last.



Some Things (SEHG)



TF666
XXS-3XL (26")



TF513
OS

Fabric
97 Cotton/3 Spandex Poplin

Pockets
Welt Pockets

Coordinating Colors
Black, Red, Turquoise, White

Fabric
97 Cotton/3 Spandex Poplin

Contrast
Pewter Sweatband

Features
Snap Tabs by Ears

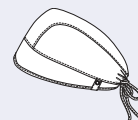
Coordinating Colors
Black, Red, Turquoise, White



It's Showtime (BCIS)



TF694
XXS-3XL (26")



TF512
OS

Fabric
100 Cotton

Contrast
Black

Pockets
Zip Side Seam Pockets

Coordinating Colors
Black, Eggplant, White

Fabric
55 Cotton/42 Poly/3 Spandex Twill

Contrast
Pewter Sweatband

Features
Snap Tabs by Ears

Coordinating Colors
Black, White

RUDOLPH THE RED-NOSED REINDEER®

Fawned Of You (RUVM)



TF626
XXS-3XL (26")

Fabric

100 Cotton

Contrast

Red

Pockets

Side Angled Pockets

Coordinating Colors

Black, Pewter, Red, White

Rudolph the Red-Nosed Reindeer © and ®/TM The Rudolph Co., L.P. All elements under license to Character Arts LLC. All rights reserved.

Frosty the Snowman™

Snowflake Frosty (FRSY)



TF614
XXS-3XL (26")

Fabric

97 Cotton/3 Spandex Poplin

Contrast

Galaxy Blue

Pockets

Patch Pockets, Interior Pocket

Coordinating Colors

Black, Galaxy Blue, Red, Royal, Teal Blue, Turquoise, White



TF514
OS

Fabric

97 Cotton/3 Spandex Poplin

Contrast

Pewter Sweatband

Features

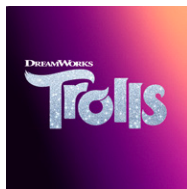
Button Tabs by Ears

Coordinating Colors

Black, Galaxy Blue, Red, Royal, Teal Blue, Turquoise, White

FROSTY THE SNOWMAN and all related characters and elements © & TM Warner Bros. Entertainment Inc. and Classic Media, LLC. Based on the musical composition FROSTY THE SNOWMAN © Warner/Chappell Music, Inc. (s21)

All styles featured are Fashion and available while supplies last.



NOTES

Trolls Holla Days (TOPH)



TF627
XXS-5XL (25½")

Fabric

95 Poly/5 Spandex Poplin

Contrast

Black

Pockets

Kangaroo Pocket

Coordinating Colors

Black, Electric Pink,
Pewter, Turquoise, White

DreamWorks Trolls © DreamWorks
Animation LLC. All Rights Reserved.



BREAST CANCER AWARENESS PRINT

NEW PRINTS

**Beautiful To Care
(BUTC)**

CK671
 XXS-5XL (26")

Fabric
 94 Poly/6 Spandex Poplin

Pockets
 Patch Pockets, Pen Slot

Coordinating Colors
 Black, Navy, Turquoise, White

CK321
 XXS-5XL (28½")

Fabric
 94 Poly/6 Spandex Poplin

Contrast
 Navy

Pockets
 Patch Pockets

Coordinating Colors
 Black, Navy, Turquoise, White

CK514
 OS

Fabric
 94 Poly/6 Spandex Poplin

Contrast
 Pewter Sweatband

Coordinating Colors
 Black, Navy, Turquoise, White

CK662
 XS-3XL (26")

Fabric
 91 Poly/9 Spandex Poplin

Pockets
 Patch Pockets, Pen Slot

Coordinating Colors
 Black, Electric Pink, Royal,
 Turquoise, White

All styles featured are Fashion and available while supplies last.



Nocturnal Branches (NTBC)



CK616
XS-3XL (26")

Fabric
97 Cotton/3 Spandex Poplin

Pockets
Patch Pockets, Instrument Loop

Coordinating Colors
Black, Ciel, Khaki, Pewter,
Purple Nitro, White

Born To Be Mild (BTML)



CK652
XS-5XL (26")

Fabric
97 Cotton/3 Spandex Poplin

Pockets
Patch Pockets, Pen Slot

Coordinating Colors
Black, Grey, Khaki, Navy,
Pewter, Royal, Shocking Pink,
Teal Blue, White

Dog Hair, Don't Care (OGDC)



CK637
XXS-5XL (26")

Fabric
94 Poly/6 Spandex Poplin

Pockets
Welt Pockets

Coordinating Colors
Black, Electric Pink, Pewter,
Teal Blue, White

**Owl-ways Good To See
You (OWSU)**

CK662
XS-3XL (26")

Fabric
91 Poly/9 Spandex Poplin

Pockets
Patch Pockets, Pen Slot

Coordinating Colors
Black, Electric Pink, Pewter,
Purple Nitro, Teal Blue,
Turquoise, White

**Healthcare Heroes
(HEHC)**

CK616
XXS-5XL (26")

Fabric
97 Cotton/3 Spandex Poplin

Pockets
Patch Pockets, Instrument Loop

Coordinating Colors
Black, Electric Pink, Pewter,
Purple Nitro, Red, Royal,
Turquoise, White


CK301
XXS-5XL (28")

Fabric
97 Cotton/3 Spandex Poplin

Contrast
Black

Pockets
Patch Pockets, Instrument Loop

Coordinating Colors
Black, Electric Pink, Pewter,
Purple Nitro, Red, Royal,
Turquoise, White


CK514
OS

Fabric
97 Cotton/3 Spandex Poplin

Contrast
Pewter Sweatband

Coordinating Colors
Black, Electric Pink, Pewter,
Purple Nitro, Red, Royal,
Turquoise, White

All styles featured are Fashion and available while supplies last.

Treats Meow (TRMW)



CK646
XS-3XL (26")

Fabric
97 Cotton/3 Spandex Poplin

Contrast
Pewter

Pockets
Patch Pockets, Interior Pocket,
Pen Slot

Coordinating Colors
Black, Electric Pink, Espresso,
Grey, Pewter, White

Botanic Bliss (BIBS)



CK301
XS-3XL (28")

Fabric
97 Cotton/3 Spandex Poplin

Contrast
Pewter

Pockets
Patch Pockets, Instrument Loop

Coordinating Colors
Black, Electric Pink, Espresso,
Grey, Pewter, White



CK637
XS-3XL (26")

Fabric
91 Poly/9 Spandex Poplin

Pockets
Welt Pockets

Coordinating Colors
Electric Pink, Grey, Pewter,
Teal Blue, White



CK513
OS

Fabric
91 Poly/9 Spandex Poplin

Contrast
Pewter Sweatband

Features
Snap Tabs by Ears

Coordinating Colors
Electric Pink, Grey, Pewter,
Teal Blue, White

HOLIDAY PRINTS

**Boo-nicorn Magic
(BOIN)**


CK662
XXS-5XL (26")

Fabric
91 Poly/9 Spandex Poplin

Pockets
Patch Pockets, Pen Slot

Coordinating Colors
Black, Eggplant, Electric Pink,
Purple Nitro, White

**Happy Friendsgiving
(HPFG)**


CK652
XS-3XL (26")

Fabric
97 Cotton/3 Spandex Poplin

Pockets
Patch Pockets, Pen Slot

Coordinating Colors
Black, Grey, Khaki, Pewter,
Shocking Pink, White

**Merry Whatever
(MRWV)**


CK651
XXS-5XL (26")

Fabric
97 Cotton/3 Spandex Poplin

Pockets
Patch Pockets, Pen Slot

Coordinating Colors
Black, Grey, Pewter, Red,
Turquoise, White



CK301
XXS-5XL (28")

Fabric
97 Cotton/3 Spandex Poplin

Contrast
Black

Pockets
Patch Pockets, Instrument Loop

Coordinating Colors
Black, Grey, Pewter, Red,
Turquoise, White



NOTES

Geo Tie Dye
(GEOY)



CK513
OS

Fabric
97 Cotton/3 Spandex Poplin

Contrast
Pewter Sweatband

Coordinating Colors
Black, Navy, Royal, White



CAREISMATIC BRANDS

9800 De Soto Ave.
Chatsworth, CA 91311

Contact us for all of your asset needs:
digitalassets@careismatic.com

Order on CBI Central: cbicentral.com

Customer Care:
800.283.7272

M – F, 6 am to 4 pm PST

Fax: 888.283.7271

Email: orderinquiry@careismatic.com
(Subject line: Order)

CherokeeUniforms.com



@cherokeeuniforms

8040/AUG21