

CHRONOTRACE in a foam tag

UHF RFID solutions for SPORT TIMING



GENERAL CHARACTERISTICS:

Operating Frequency: Global (860 - 960 MHz)

RF Protocol: EPC global and ISO 18000 -63 compliant, UHF Gen2v2 compliant.

EPC Memory: 128 bits

USER Memory: 32 bits

TAG size: 108 X 30 X 2 mm

Delivery format: 2 mm EVA foam spacer wet

Adhesive: Solvent free permanent adhesive

Face material: Standard white Polypropylene, or under request.

Operating temperature: -40°C to + 85°C

Shelf Life: +20°C, 50% RH-minimum.

Reel format: 300psc/reel.

Inner core: 76 mm

External diameter: 200 mm

Trace-tech Id Solutions has developed a new RFID UHF tag that has been especially designed to suit the requirements of sports timing events. It offers excellent results on challenging applications.

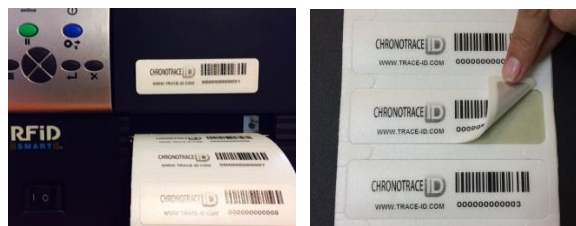


✓ **Printed with TT PRINTER**

✓ **Encoded system**

COMMON APPLICATION:

- ✓ High-performance for mass timing applications
- ✓ Cost-effective technology
- ✓ Works at peak efficiency in rapidly changing environments
- ✓ Timing information available in real time



CHRONOTRACE have an outstanding performance when it is attached to sportsmen bodies and deliver high power output in harsh conditions. The inlay implements the renowned Impinj Monza R6 chip featuring auto tune technology providing the best performance even in rapid changing environments. It comes in a ready-to-use format designed to improve performance when attached to start numbers (BIBs). It is available in 2mm foam spacer with high quality adhesive. It has been designed so that the highest achievable sensitivity is obtained in proximity of human bodies. Its design has undergone the most thorough tests and simulations, optimizing the design for each scenario.

CARE AND HANDLING: RFID inlays are sensitive to ESD. Observe standard practices to keep environmental static charge to a minimum.

PRODUCT CHANGES: Trace-ID reserves the right to modify, change, supplement or discontinue product offerings at any time without notice.

APPLICATIONS This product should be tested by the customer/ user thoroughly under end use conditions to ensure the product meets the particular requirements.

Trace-ID does not represent that this product is fit for any particular purpose or use