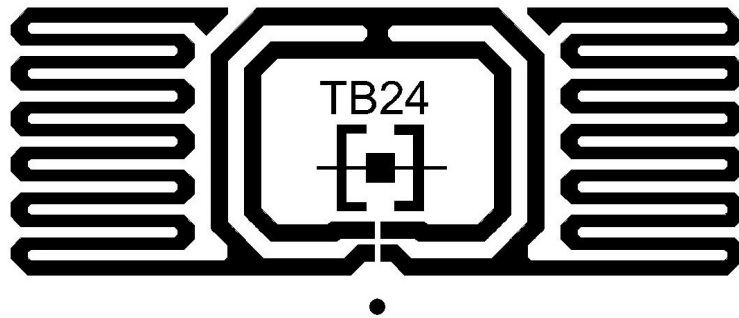


TB24 Ringtrace



- PROTOCOL:** EPC Class 1 Gen 2 / ISO 18000-6C
- OPERATING FREQUENCY:** Global 860-960 Mhz
- ANTENNA SIZE:** 22 x 8 mm
- INTEGRATED CIRCUIT:** Impinj Monza 4D/4E/4QT
- EPC MEMORY:** From 128 bits to 496 bits
- USER MEMORY:** From 32 bits to 512 bits

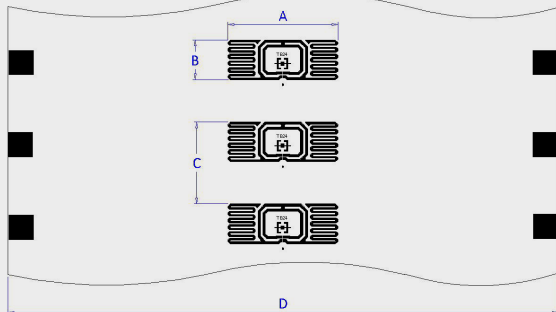


TB24 RINGTRACE COMMON APPLICATIONS

- Jewellery
- Pharmaceutical applications

INLAY GENERAL DIMENSIONS

DRY INLAY

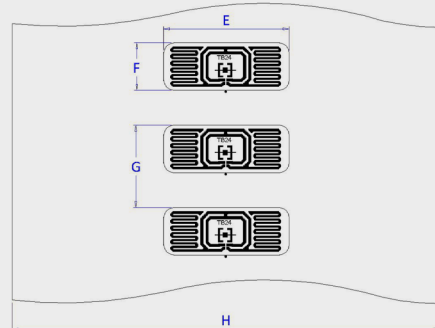


A- Inlay Width	22 mm
B- Inlay Length	8 mm
C- Inlay Pitch	16,4 mm
D- Web Width	110 mm



DRY INLAY = 50 µm PET + 150 µm die

WET/WHITE-WET INLAY



E- Label Width	25 mm
F- Label Length	9,5 mm
G- Label Pitch	16,4 mm
H- Web Width	85 mm



GENERAL CHARACTERISTICS OF INLAY

Operating Temperature Range	-40° C to +85° C at 40-80% RH
Storage Temperature	-40° C to +85° C at 40-80% RH
Electrostatic Discharge (ESD) tolerance	2.000V HBM (Human Body Model)

REEL DETAILS

Inner core diameter	76 mm
Outer core diameter	190 mm
Bending Diameter	≥ 50mm, tension less than 10 N
Average # of units per roll	7.500 pieces
Quality	100% performance tested
Available formats	Dry, wet, tag

CARE AND HANDLING: RFID inlays are sensitive to ESD. Observe standard practices to keep environmental static charge to a minimum.
APPLICATIONS: This product should be tested by the customer/user thoroughly under end use conditions to ensure the product meets the particular requirements.

PRODUCT CHANGES: Trace-Tech Id Solutions reserves the right to modify, change, supplement or discontinue product offerings at any time without notice.