



Focus on RFID core technology

Hopeland USB desktop reader

Quick Start

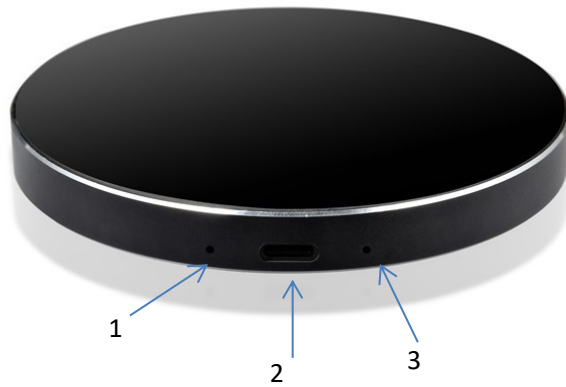


USB desktop reader quick start

Contents

Appearance.....	3
Connect reader.....	3
Two working modes.....	4
The normal reader mode.....	5
HID keyboard mode.....	6

Appearance



1. Working status indicator, red represents normal reader mode, green represent HID Keyboard mode
2. USB type C, communication interface
3. Function switch key, manual switch normal reader mode and HID Keyboard mode

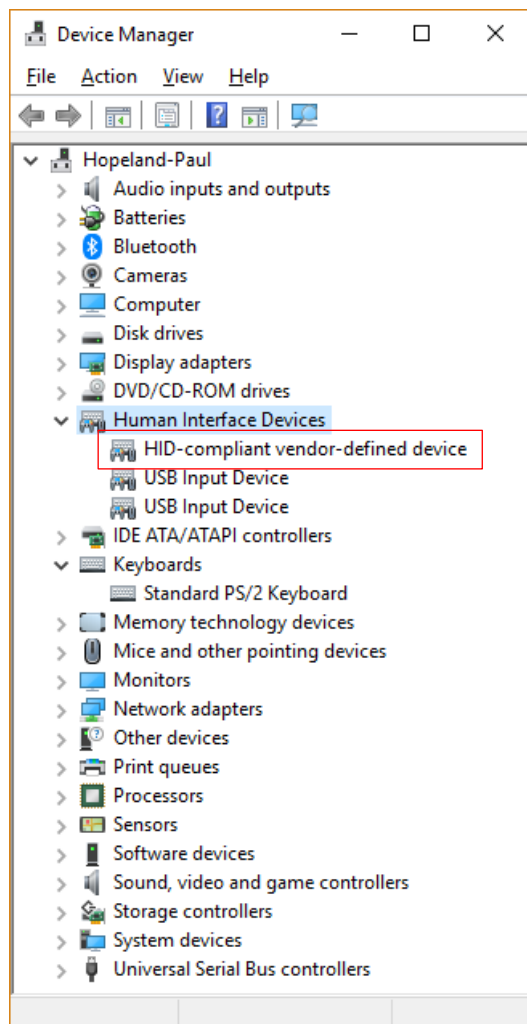
Connect reader

Use a USB cable to connect the desktop reader to the USB port of the computer

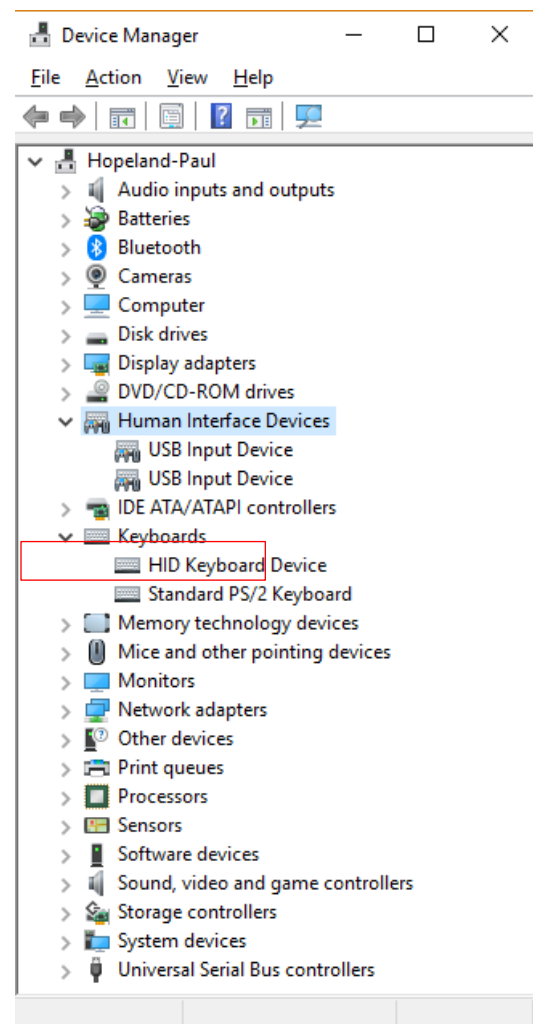


Two working modes

The desktop reader is no need to install drivers at all on Windows PC. The corresponding devices in the device manager under different working modes are as follows:



Normal reader mode



HID Keyboard mode

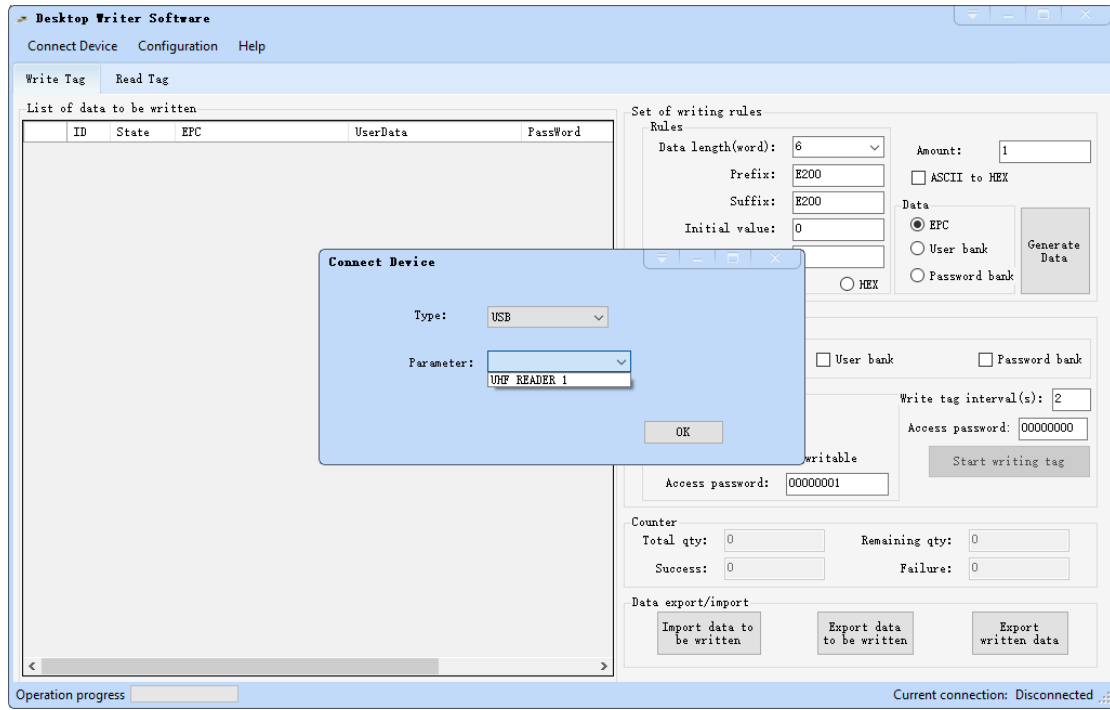
Two working modes of the desktop reader,

One is the normal reader mode, which can be used together with desktop writer software to write tags in batches.

One is the HID keyboard mode. In this mode, the desktop reader will output the ID of the tag to the computer in the keyboard simulation manner. At this time, the desktop writer software cannot connect to the desktop reader.

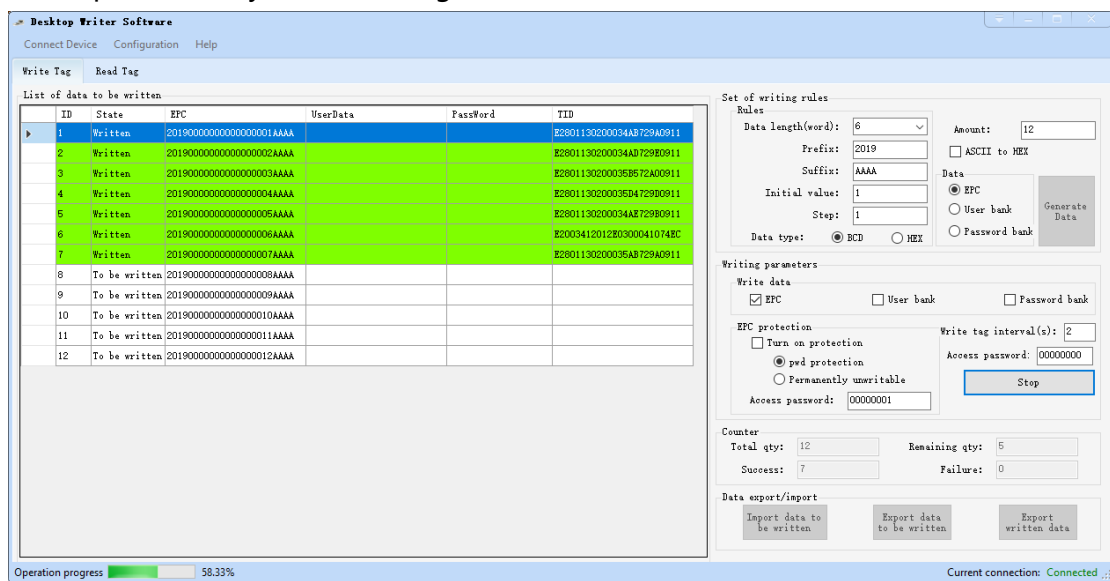
The normal reader mode

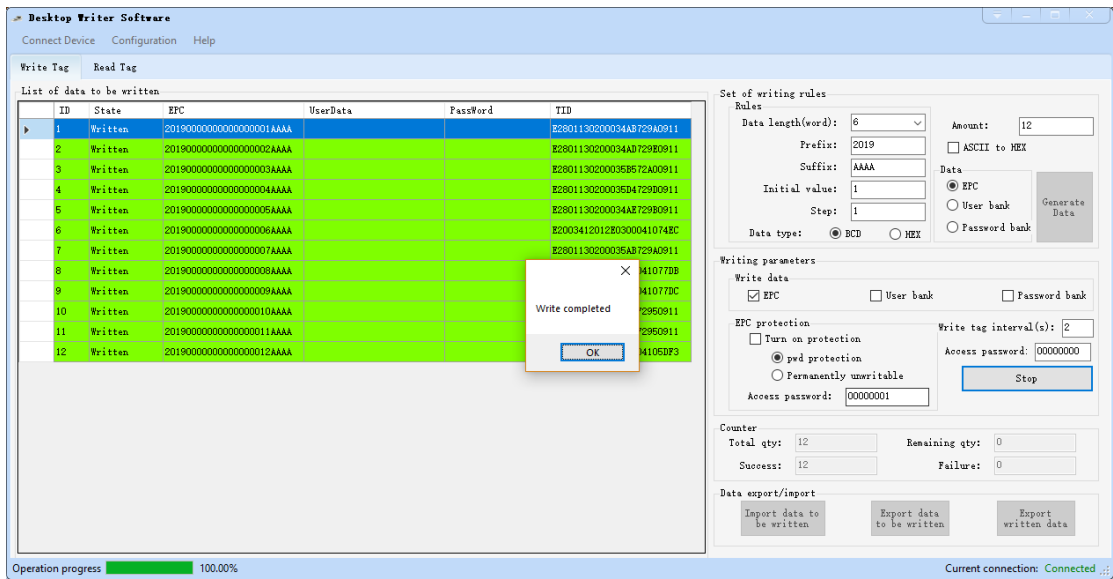
The current working status indicator is red. After opening the desktop write software, select USB connection mode to connect



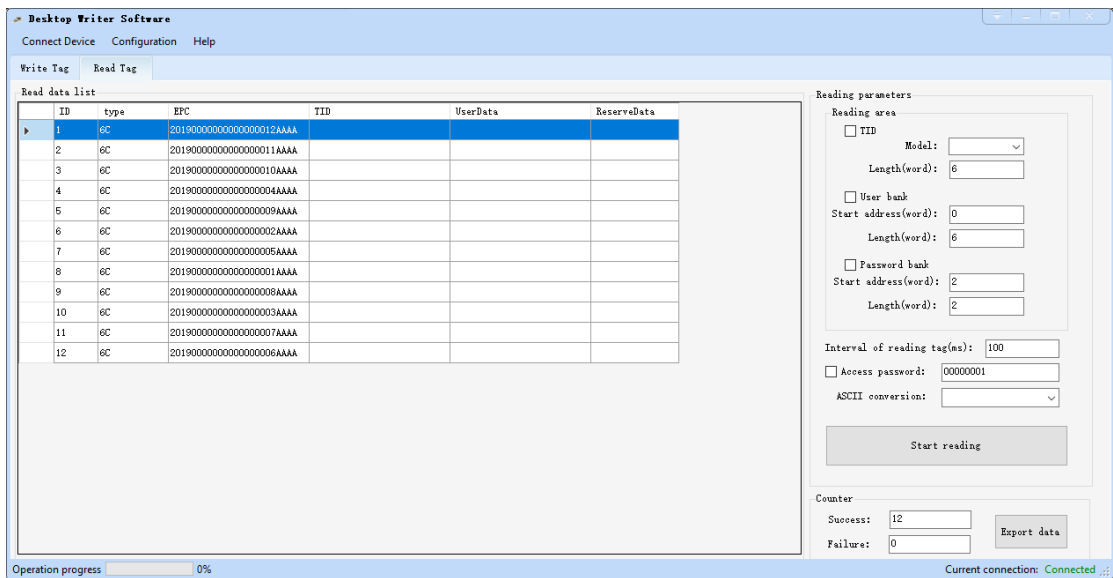
General tag writing steps:

- Generate data to be written after customizing rules
- Select the data area to be written and whether to do password write protection for EPC
- Click the Start writing tag button to start the write tag process and ensure that the desktop reader only writes one tag at a time to avoid confusion.

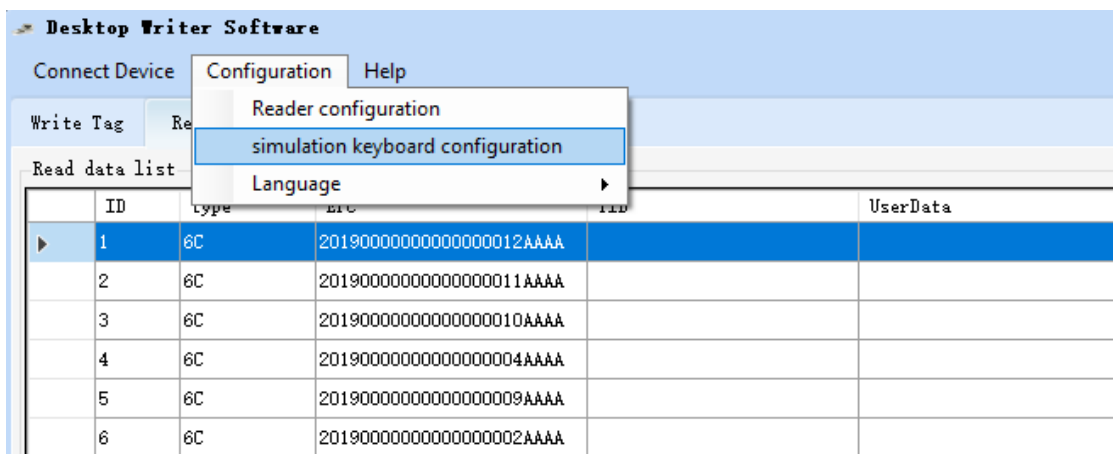


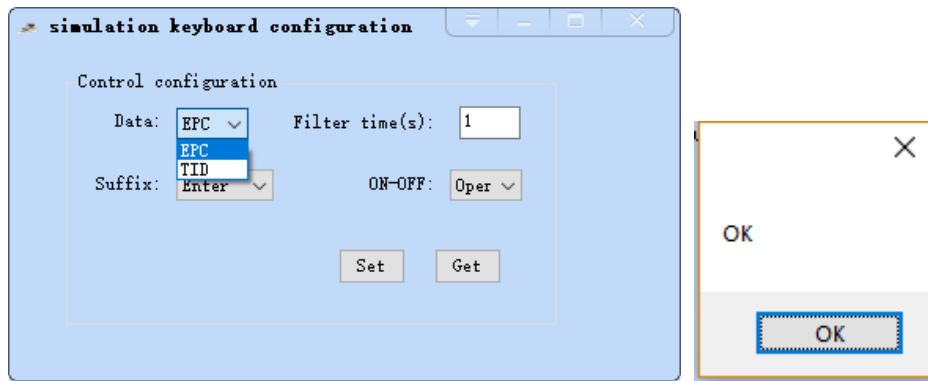


After selecting the data area to read, click the **Read Tag** button

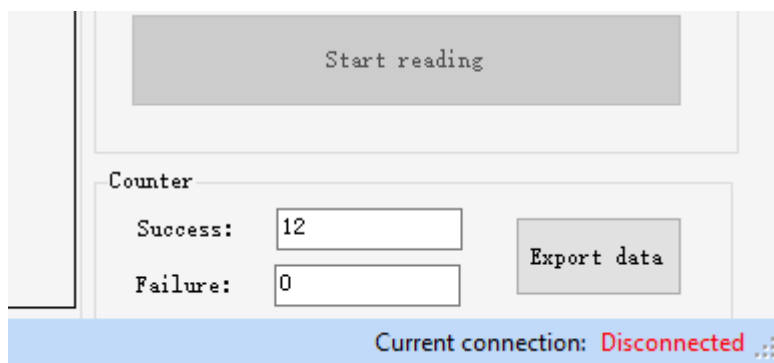


HID keyboard mode





After setting, the reader will sound once and prompt ok. The bottom right corner of the software interface shows disconnected. The desktop reader has entered the HID keyboard mode, and the current working status indicator is green



After switching the system input method to English, the tag data read by the desktop reader will be output to the place where the current cursor is, as follows

```
20190000000000000009AAAA
20190000000000000006AAAA
20190000000000000003AAAA
20190000000000000012AAAA
```

If you want to re-enter the normal reader mode, you need to hold down the function switch key with a clip or SIM card pin, and then enter the normal reader mode after several sounds and the status indicator changes from green to red.