



Shenzhen Getian Opto-electronics Co.,Ltd
Add: Building 55,Baotian 3rd Road,Xixiang,
Baoan District, Shenzhen,China 518102
Tel:+86-755-29177598
E-mail: getianled@getiangroup.com
Web: www.getiangroup.com



Shenzhen Getian Opto-electronics Co.,Ltd

ABOUT GETIAN

Shenzhen Getian Opto-electronics Co., Ltd (also known as GT), headquartered in Shenhzen, is one of China's leading LED packaging manufacturer with over 14 years of experience in LED Lighting industry. Getian, with strong R & D development and manufacturing integrated in-house, is a professional and dynamic manufacturer specializing in COB LED 2-400W, Power LEDs 1-400W, SMD LEDs, projecting LED modules 10-800W, etc, which are widely applied to general lighting, horticulture, studio lighting, landscape & architectural lighting and stage lighting. Besides, Getian has developed its own complete and competitive supply chain such as LED Drivers (Gedian, known as GD) and LED lamp OEM (Geming, known as GM) and PCB design & soldering service to provide one-stop solutions to our valued customers.

Most of our LED products are LM-80 tested and approved. We have been granted for more than 100 patents both in design and technology areas. With excellent quality, diversity and reliable performance, reasonable price, and satisfactory after-sales service, all of our products comply with international quality standards and are greatly welcomed in a variety of different markets throughout the world.

Getian, honored as "National High-Tech Enterprise", has an area of more than 12000 square meters. We have been approved by ISO9001-2008 Quality Control System and adopted ERP System. Getian also equips with a high-level R&D lab, accredited by CNAS, in which more than 11 reliability tests can be conducted.

Getian is making its efforts and continues to provide excellent products and satisfied service to our customers adhering to the philosophy of "seeking excellence, obeying honesty". Your trust and support is highly appreciated. Welcome your enquiry and visit anytime.



GETIAN
2005

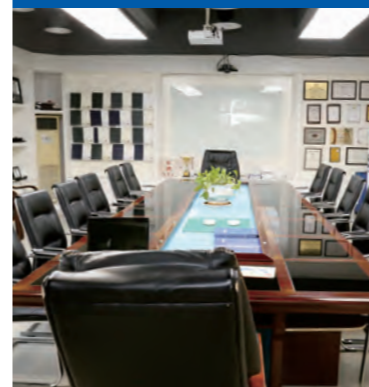
LED Packaging

GEDIAN
2009

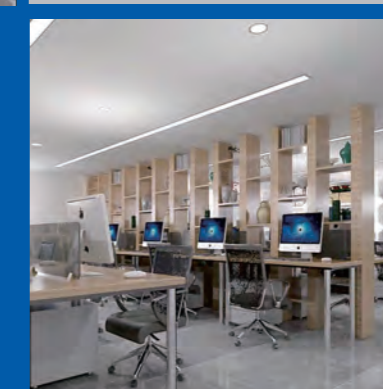
LED Drivers

GEMING
2008

LED Lamp OEM



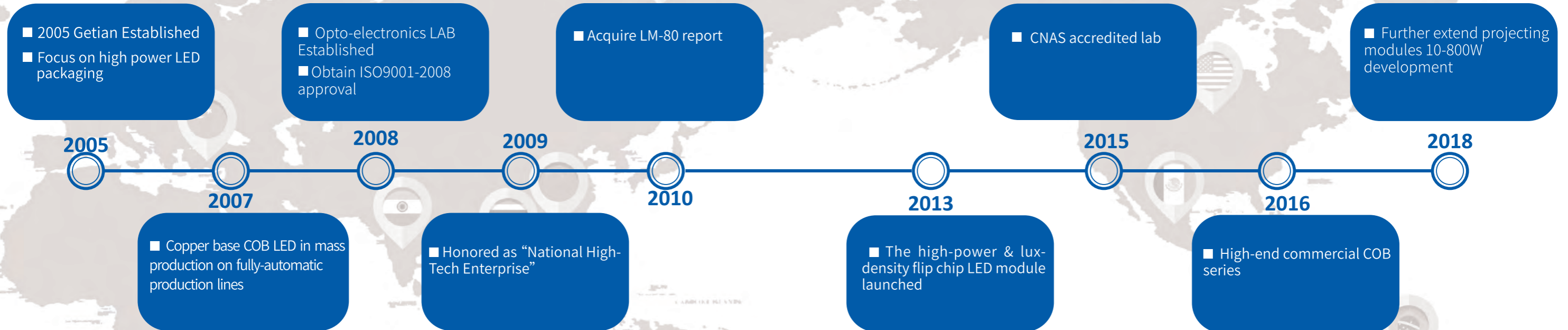
GETIAN GROUP



ABOUT GETIAN



Brief Development History



HONORARY CERTIFICATE

Getian, honored as National High Tech Enterprise, have obtained more than 100 patents for invention, design and application etc.



HARDWARE FACILITIES



Registration No. CNAS L7824

Laboratory of Shenzhen Getian Optoelectronics Co., Ltd.

Is accredited to ISO/IEC 17025:2005 General requirements for the competence of testing and calibration laboratories.

CNAS-CL01 accreditation criteria for the competence of testing and calibration laboratories.



Content

General Lighting
11-21



Special Lighting
22-32



Projection Lighting
33-40



OEM & Custom Service
41-43



CONTENT

<p>▼ General Lighting</p>	
MSA COB LED	11-15
Copper COB LED	16-18
Power LED	18
SMD LED	19-21
<p>▼ Special Lighting</p>	
Horticulture LED	22-29
Studio LED	30
Landscape & Architectural LED	31-32

<p>▼ Projection Lighting</p>	
Logo Projector	33-36
Stage & Search Light	37-40
<p>▼ OEM & Custom Service</p>	
	41-43

01

General Lighting

- A wide power range is optional
- Various packages (COBs, SMDs) available
- Good color uniformity
- High brightness, good reliability, heat-resistant and UV resistant
- Suitable for general lighting including indoor, outdoor and industrial lighting
- Most of the LED series are LM-80, RoHS, EN62471/IEC62471 approved



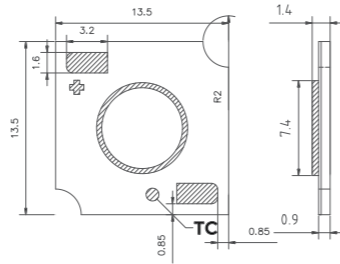
Shenzhen Getian Opto-electronics Co.,Ltd

APPLICATION SCENARIOS

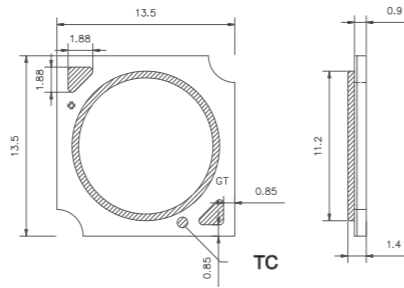




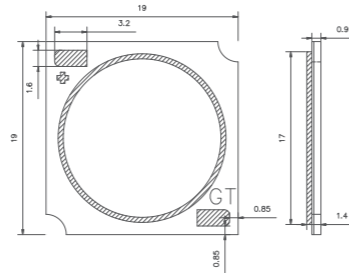
GT-COB1313-2



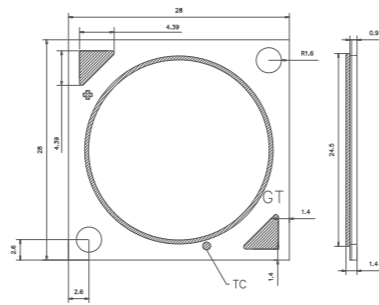
GT-COB1313-1



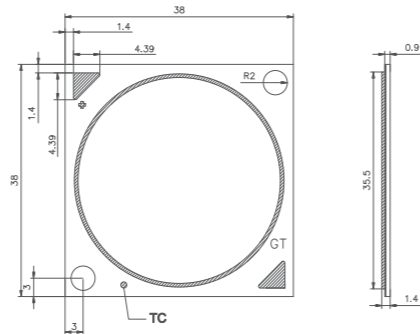
GT-COB1919



GT-COB2828



GT-COB3838



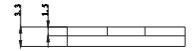
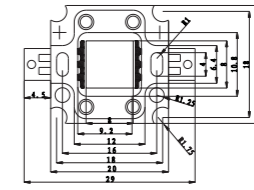
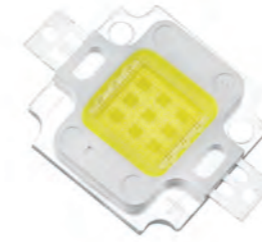
Specifications Ta= 25C°

Package	Product Type	CCT (K)	CRI	Standard Values				Max Ratings		
				Typ.If (mA)	Typ.Vf (V)	Power (W)	LM/W (@Typ.If)	Typ.If (mA)	Power (W@Typ.Vf)	LM/W (@Typ.If)
	GT-COB1313-2 SP0303	2700K	80	270	8.7	2.3	130-140	540	4.7	110-120
		90	100-110				80-90			
		3000K	80				140-150			120-130
		90	110-120				90-100			
		3500K	80				130-140			120-130
90	110-120	90-100								
	GT-COB1313-1 SP1201	2700K	80	90	34.8	3.1	130-140	180	6.3	110-120
		90	100-110				80-90			
		3000K	80				140-150			120-130
		90	110-120				90-100			
		3500K	80				150-160			130-140
90	120-130	100-110								
	GT-COB1313-1 SP1202	2700K	80	180	34.8	6.2	130-140	360	12.5	110-120
		90	100-110				80-90			
		3000K	80				140-150			120-130
		90	110-120				90-100			
		3500K	80				140-150			120-130
90	110-120	90-100								
	GT-COB1313-1 SP1203	2700K	80	270	34.8	9.4	130-140	540	18.8	110-120
		90	100-110				80-90			
		3000K	80				140-150			120-130
		90	110-120				90-100			
		3500K	80				150-160			130-140
90	120-130	100-110								
	GT-COB1313-1 SP1204	2700K	80	360	34.8	12.5	130-140	720	25	110-120
		90	100-110				80-90			
		3000K	80				130-140			110-120
		90	110-120				90-100			
		3500K	80				140-150			120-130
90	110-120	90-100								
	GT-COB1919 SP1205	2700K	80	450	34.8	15.6	130-140	900	31	110-120
		90	100-110				80-90			
		3000K	80				140-150			120-130
		90	110-120				90-100			
		3500K	80				150-160			130-140
90	120-130	100-110								
	GT-COB1919 SP1205	2700K	80	450	34.8	15.6	130-140	900	31	110-120
		90	100-110				80-90			
		3000K	80				140-150			120-130
		90	110-120				90-100			
		3500K	80				150-160			130-140
90	120-130	100-110								

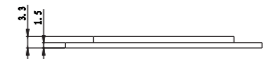
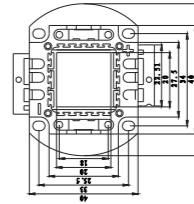
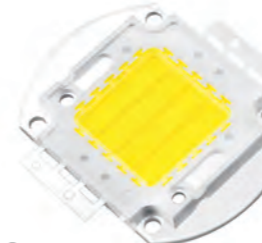
Specifications Ta= 25C°

Package	Product Type	CCT (K)	CRI	Standard Values				Max Ratings		
				Typ.If (mA)	Typ.Vf (V)	Power (W)	LM/W (@Typ.If)	Typ.If (mA)	Power (W@Typ.Vf)	LM/W (@Typ.If)
	GT-COB1919 SP1206	2700K	80	540	34.8	18.7	130-140	1080	37.6	110-120
			90				100-110			80-90
		3000K	80				140-150			120-130
			90				110-120			90-100
		3500K	80				140-160			120-130
			90				110-130			90-100
4000K	80	150-160	130-140							
	90	120-130	100-110							
	GT-COB1919 SP1208	2700K	80	720	34.8	25	130-140	1440	50	110-120
			90				100-110			80-90
		3000K	80				140-150			120-130
			90				110-120			90-100
		3500K	80				140-160			120-130
			90				110-130			90-100
	GT-COB2828 SP1212	3000K	80	1080	34.8	37.5	140-150	2160	75	120-130
			90				120-130			100-110
		3500K	80				140-150			120-130
			90				120-130			100-110
		4000K	80				150-160			130-140
			90				120-130			100-110
5000K	70	160-170	140-150							
	80	150-160	130-140							
	GT-COB2828 SP1812	3000K	80	1080	52.2	56.3	130-140	2160	112.7	110-120
			90				110-120			90-100
		3500K	80				130-140			110-120
			90				110-120			90-100
		4000K	80				140-150			120-130
			90				120-130			100-110
5000K	70	150-160	130-140							
	80	140-150	120-130							
	GT-COB2828 SP1818	3000K	80	1620	52.2	84.5	130-140	3240	169.1	110-120
			90				110-120			90-100
		3500K	80				130-140			110-120
			90				110-120			90-100
		4000K	80				140-150			120-130
			90				120-130			100-110
5000K	70	150-160	130-140							
	80	140-150	120-130							
	GT-COB3838 SP1825	4000K	70	2250	52.2	117.4	150-160	4500	234.9	130-140
			80				140-150			120-130
		5000K	70				150-160			130-140
			80				140-150			120-130
		4000K	70				150-160			130-140
			80				140-150			120-130
5000K	70	150-160	130-140							
	80	140-150	120-130							
	GT-COB3838 SP3618	4000K	80	1620	104.4	169	140-150	3240	338.3	120-130
			70				150-160			130-140
		5000K	70				150-160			130-140
80	140-150		120-130							

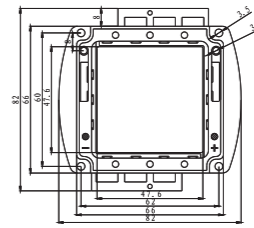
GT-P25



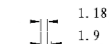
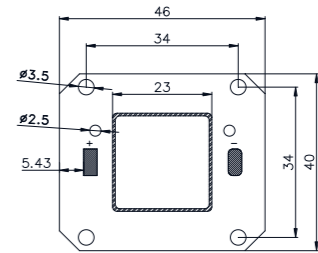
GT-P100



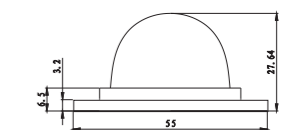
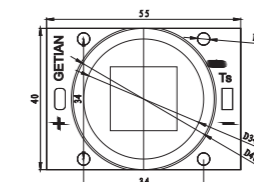
GT-P500






GT-COB4046




GT-FCHB

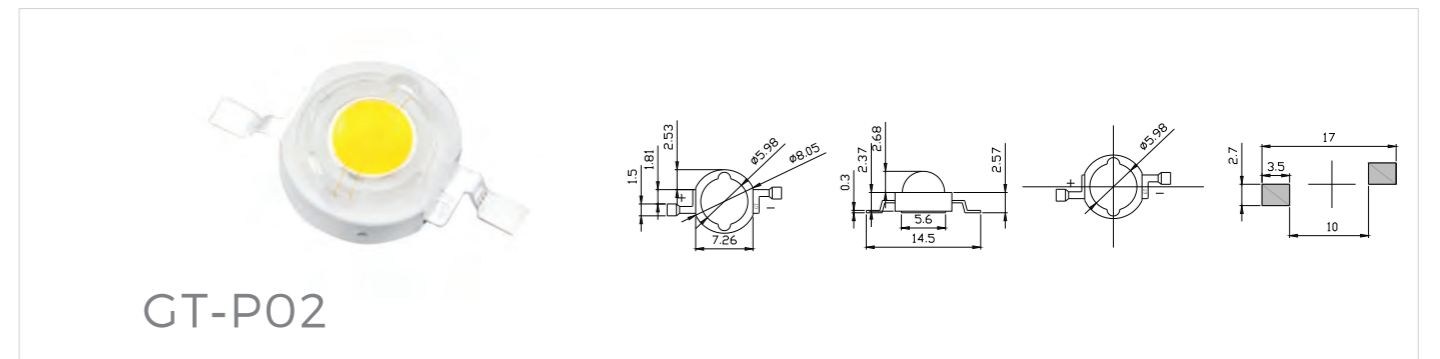



Specifications Ta= 25C°

Package	Product Type	CCT (K)	CRI	φ (lm)	Power (W)	Typ.If (mA)	Typ.Vf (V)
	GT-P25	3000	70	900-1000	10	1050	8-10
		4000-6500		1000-1100			
		3000		20	1800-2000	1400	14-17
		4000-6500			2000-2200		
	GT-P100	3000-6500	70	3600-3900	30	1050	28-34
				6000-6500	50	1750	
				9600-10400	80	2800	
				12000-13000	100	3500	
	GT-P500	3000-6500	70	14400-15600	120	2800	42-51
				18000-19500	150	3500	
				24000-26000	200	4550	
				36000-39000	300	6300	
				44000-48000	400	7700	

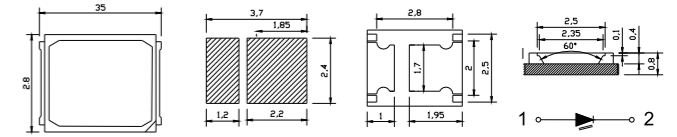
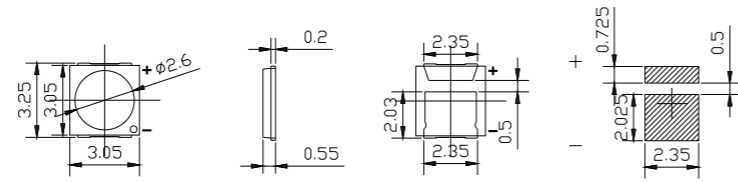
Specifications Ta= 25C°

Package	Product Type	CCT (K)	CRI	LM/W (@Typ.If)	Power (W)	Typ.If (mA)	Typ.Vf (V)
	GT-COB4046	3000-6500	70	150-160	30	900	33
				150-160	50	1500	33
				140-150	80	2400	33
				130-140	100	3000	33



Package	Product Type	Viewing Angle (°)	CCT (K)	CRI	φ (lm)	Power (W)	VF (V)
	GT-FCHB60 (SP1003)	120	5000-6000	70	6600-7200	60	28-34
		90					
	GT-FCHB100 (SP1004)	120	5000-6000	70	10000-11000	100	28-34
		90					
	GT-FCHB150 (SP1006)	120	5000-6000	70	15000-16500	150	28-34
		90					
	GT-FCHB200 (SP1007)	120	5000-6000	70	20000-22000	200	28-34
		90					

Product Type	CCT (K)	CRI	φ (lm)		Power (W)
			2.8-3.4V @ 350mA	3.2-4.0V @ 750mA	
GT-P02W	1800	70	90-100	150-170	1-3
		80	80-90	130-150	
	2000	70	100-120	170-200	
		80	90-100	150-170	
	2700	70	150-170	250-280	
		80	140-160	240-270	
		90	120-130	200-220	
		95	100-120	170-200	
	3000	70	150-170	250-280	
		80	140-160	240-270	
		90	120-130	200-220	
		95	100-120	170-200	
4000-6500	70	160-180	270-300		
	80	150-170	250-280		
	90	130-140	220-240		
		95	110-130	190-220	

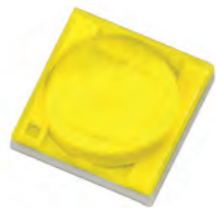


Product Type	CCT (K)	CRI	φ (lm)	Power (W)	VF (V)	IF (mA)
GT-M3030XXX	1900	70	100-120	1W	3.0	350
		70	100-120			
	2100	80	130-140			
		90	100-110			
	2700	80	130-140			
		90	100-110			
	3000	80	130-140			
		90	100-110			
	4000	80	130-150			
		90	110-120			
	5000	70	150-170			
		80	140-160			
6000	80	140-160				
	90	110-130				
GT-M3030XXX	1900	70	100-120	1W	6.0	175
		70	100-120			
	2700	80	130-140			
		90	100-110			
	3000	80	130-140			
		90	100-110			
	4000	70	140-160			
		80	130-150			
	5000	80	140-160			
		90	110-120			
	6000	70	150-170			
		80	140-160			
	90	110-130				
	90	110-130				

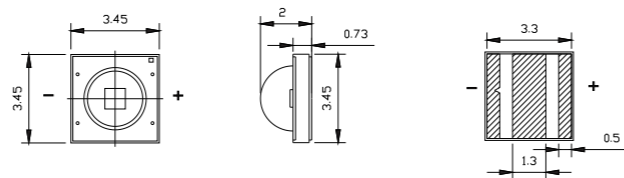
Package	Product Type	Color	CCT (K)	CRI	φ (lm)	Power (W)	VF (V)	IF (mA)		
	GT-M2835	White	4000	80	24-26LM	0.2W	3V	60mA		
					26-28LM					
					28-30LM					
					30-32LM					
					32-34LM					
					50-55LM					
			5000	80	55-60LM	0.5W	3V	150mA		
					60-65LM					
					65-70LM					
					70-75LM					
					65-75LM				9V	60mA
					65-70LM					
			70-75LM							
			6000	80	100-110LM	1W	6V	150mA		
					110-120LM					
					115-125LM					
					120-130LM					
					115-125LM				9V	100mA
120-130LM	12V	80mA								
130-140LM			18V	60mA						
110-120LM	36V	30mA								
120-130LM										
120-130LM										

Ta= 25°C RH60%; 5000pcs/Reel

Golden White ± 100K; Warm White: ±150K; Pure White: ± 250K.



GT-FC35



Product Type	CCT (K)	CRI	ϕ (mm)	Power (W)	VF (V)	IF (mA)	Max.IF (mA)
GT-FC35	3000	70	140-150	1	3.0	350	1000
	5500	70	150-160				

Special Lighting

02

- Horticulture LED**
 Perfect photoelectric conversion efficiency
 Full range of colors from 360nm to 940nm
 Free combination of colors and power
 Ideal Spectrum for plants grow
- Studio LED**
 Super High CRI with good TLCI values
 Accurate and agile softlight
 Outstanding color consistency
- Landscape & Architectural LED**
 White and different colors optional
 Directional lighting effect to create vivid scenes
 Highly integrated, colorful, perfect mixed light effect



APPLICATION SCENARIOS



Full- spectrum COB Specifications Ta= 25C°

Product Type	CCT (K)	CRI (Typ)	R1-R15 (min)	Standard Values				Max Ratings	
				Typ.If (mA)	Typ.Vf (V)	Power (W)	LM/W (@Typ.If)	Typ.If (mA)	LM/W
GT-COB1313-2 SP0303	2700	97	90	270	8.7	2.3	90-100	540	80-90
	3000						100-110		80-90
	4000						100-110		80-90
	5000	110-120					90-100		
	5700	110-120					90-100		
GT-COB1313-1 SP1201	2700	97	90	90	34.8	3.1	90-100	180	80-90
	3000						100-110		80-90
	4000						100-110		80-90
	5000	110-120					90-100		
	5700	110-120					90-100		
GT-COB1313-1 SP1202	2700	97	90	180	34.8	6.2	90-100	360	80-90
	3000						100-110		80-90
	4000						100-110		80-90
	5000	110-120					90-100		
	5700	110-120					90-100		
GT-COB1313-1 SP1203	2700	97	90	270	34.8	9.4	90-100	540	80-90
	3000						100-110		80-90
	4000						100-110		80-90
	5000	110-120					90-100		
	5700	110-120					90-100		
GT-COB1313-1 SP1204	2700	97	90	360	34.8	12.5	90-100	720	80-90
	3000						90-100		80-90
	4000						90-100		80-90
	5000	100-110					90-100		
	5700	100-110					90-100		
GT-COB1919 SP1205	2700	97	90	450	34.8	15.6	90-100	900	80-90
	3000						100-110		90-100
	4000						100-110		90-100
	5000	110-120					100-110		
	5700	110-120					100-110		
GT-COB1919 SP1206	2700	97	90	540	34.8	18.7	90-100	1080	80-90
	3000						100-110		90-100
	4000						100-110		90-100
	5000	110-120					100-110		
	5700	110-120					100-110		

Full- spectrum COB
Specifications Ta= 25C°

Product Type	CCT (K)	CRI (Typ)	R1-R15 (min)	Standard Values				Max Ratings	
				Typ.If (mA)	Typ.Vf (V)	Power (W)	LM/W (@Typ.If)	Typ.If (mA)	LM/W
GT-COB1919 SP1208	2700	97	90	720	34.8	25	90-100	80-90	
	3000						100-110	80-90	
	4000	100-110					90-100		
	5000	110-120					100-110		
	5700	96					110-120	100-110	
GT-COB2828 SP1212	3000	97	90	1080	34.8	37.5	100-110	80-90	
	4000						100-110	90-100	
	5000	110-120					80-90		
	5700	110-120					100-110		
GT-COB2828 SP1812	3000	97	90	1080	52.2	56.3	100-110	80-90	
	4000						100-110	90-100	
	5000	110-120					80-90		
	5700	110-120					100-110		
GT-COB2828 SP1818	3000	97	90	1620	52.2	84.5	100-110	80-90	
	4000						100-110	90-100	
	5000	110-120					80-90		
	5700	110-120					100-110		
GT-COB3838 SP1825	4000	97	90	2250	52.2	117.4	100-110	80-90	
	5000	96					110-120	100-110	
	5700						110-120	100-110	
GT-COB3838 SP3618	4000	97	90	1620	104.4	169	100-110	80-90	
	5000	96					110-120	100-110	
	5700						110-120	100-110	



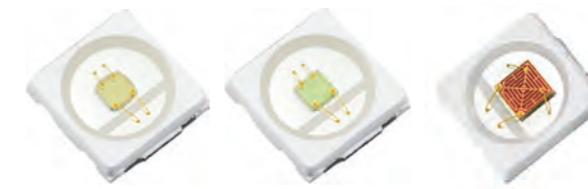
Power Color LED
Specifications Ta= 25C°

Package	Product Type	Color	WL (nm)	φ (lm)	Power (W)	VF (V)	IF (mA)	
	GT-P02B	Royal Blue	440-450	10-25	1-3	2.8-3.4	350	
		Standard Blue	460-470	20-30	1	2.8-3.4	350	
				30-50	3	3.2-4.0	750	
	GT-P02G	Turquoise/ Cyan	500-510	60-80	1-3	3.2-4.0	750	
		Emerald Green	520-530	80-100	1	2.8-3.4	350	
				150-170	3	3.2-4.0	750	
	GT-P02Y	Yellow	585-595	30-40	1	2.0-2.8	400	
				90-100	3		800	
					GT-P02R	Standard Red	620-630	30-50
40-60	3	2.2-2.8	800					
Deep Red	640-660	20-30	1			2.0-2.6		400
		30-50	3			2.2-2.8		800
Package	Product Type	Color	WL (nm)	Radiation Intensity (mW)	Power (W)	VF (V)	IF (mA)	
	GT-PDT	UV / Purple	360-370	100-200	1	2.8-3.4	350	
			370-380	200-300				
			380-390	300-500				
			390-420	400-600				
			420-430	400-600				
	GT-P02IR	Far Red	740-745	80	1-3	2.0-2.2	800	
			Infrared	850	70	1	1.5-1.7	400

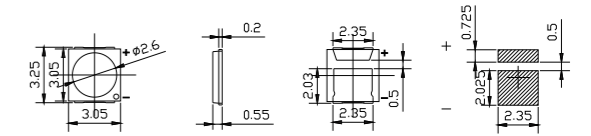
RGB LED

Specifications Ta= 25C°

Package	Product Type	Color	WL (nm)	φ 1 (lm)	φ 2 (lm)	Power (W)	VF (V)	IF (mA)
	GT-P6PRGB (3in1)	● R	620-630	30-50	50-70	3	2.0-2.6	400
		● G	520-530	60-80	100-120		2.8-3.4	350
		● B	455-465	10-20	20-30		2.8-3.4	350
Product Type	Color	WL (nm)	φ (lm)	Power (W)	IF (mA)	VF (V)		
GT-P100R	● Red	620-630	1200-1800	30	1200	20-26		
			2400-3000	60	2400			
			3600-5400	90	3600			
GT-P100G	● Green	520-530	2400-3000	30	1050	28-34		
			4800-6000	60	2100			
			7200-9000	90	3150			
GT-P100B	● Blue	460-470	450-750	30	1050	28-34		
			600-1200	60	2100			
			900-1000	90	3150			
GT-P10RGB09	●●● RGB	620-630	150-240		400	6-8		
			520-530	300-360	10	350	8-10	
			460-470	60-90		350	8-10	
GT-P100RGB30	●●● RGB	620-630	400-600		400	20-26		
			520-530	800-1000	30	350	28-34	
			460-470	100-200		350	28-34	
GT-P100RGB60	●●● RGB	620-630	700-1000		800	20-26		
			520-530	1400-1800	60	700	28-34	
			460-470	1400-1800		700	28-34	
GT-P100RGB90	●●● RGB	620-630	1800-2100		1200	20-26		
			520-530	3000-3600	90	1050	28-34	
			460-470	1350-2250		1050	28-34	



Full-spectrum 3030 SMD

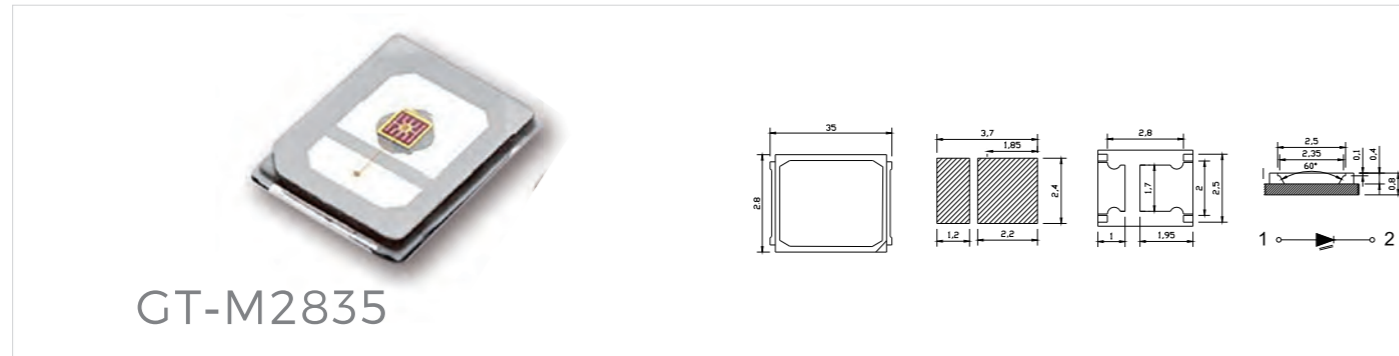


Product Type	CCT (K)	CRI	φ (lm)	Power (W)	VF (V)	IF (mA)
GT-M3030XXX	● 2700	97	110-120	1W	3.0/6.0	350/175
	● 3000	97	115-125			
	● 4000	96	120-130			
	● 5000	95	125-135			
	● 5700	95	125-135			

Notes: 2700K 3000K

Product Type	Color	WL (nm)	φ (lm)	Power (W)	VF (V)	IF (mA)
GT-M3030XXX	● Blue	460-470	20-30	1W	2.8-3.4	350
	● Green	520-530	60-80			
	● Yellow	585-595	25-35			
	● Amber	600-610	25-35		2.0-2.6	400
	● Red	620-630	20-35			
	● Deep Red	650-660	100-110			
GT-M3030XXX (Phosphor)	● Lake Blue	450-460	20-30	1W	3.0/6.0	350/175
	● Green	555-560	140-160			
	● Yellow	585-595	90-100			
	● Red	620-630	15-25			

Ta= 25°C RH60%; 5000pcs/Reel



2835 Color LED

Package	Product Type	Color	WL (nm)	φ (lm)	Power (W)	VF (V)
	GT-M2835B	Blue	460-465	3-4	0.2	2.8-3.4
	GT-M2835G	Green	515-525	10-12		
	GT-M2835Y	Yellow	590-596	7-8		
	GT-M2835A	Amber	600-610	7-8		
	GT-M2835R	Red	620-630	7-8		
	GT-M2835B	Blue	460-470	12-14	0.5	1.8-2.4
	GT-M2835G	Green	515-525	30-35		
	GT-M2835Y	Yellow	590-596	15-20		
	GT-M2835A	Amber	600-610	55-60		
	GT-M2835R	Red	620-630	15-20		

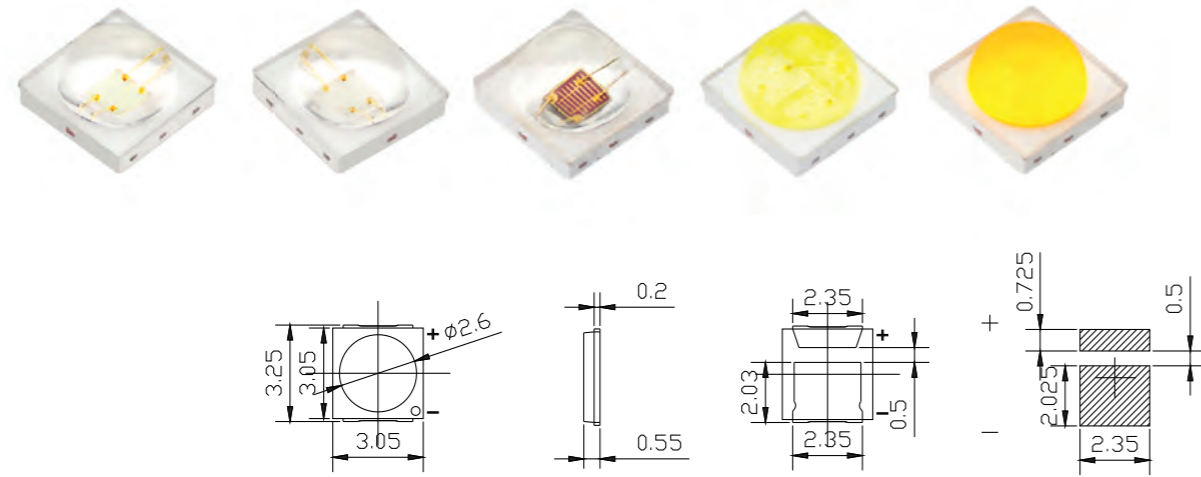
Ta= 25°C RH60%; 4000pcs/Reel

MSA COB LED

Model	CCT (k)	CRI	R9 (min)	TLCI	Standard Values				Max Ratings	
					Typ.If (mA)	Typ.Vf (V)	Power (W)	LM/W (@Typ.If)	Typ.If (mA)	LM/W
GT-COB1313-2 SP0303	3200	96	90	85	270	8.7	2.3	100-110	540	80-90
	5600	95						110-120		100-110
GT-COB1313-1 SP1201	3200	96	90	85	180	34.8	3.1	100-110	180	80-90
	5600	95						110-120		100-110
GT-COB1313-1 SP1202	3200	96	90	85	180	34.8	6.2	100-110	360	80-90
	5600	95						110-120		100-110
GT-COB1313-1 SP1203	3200	96	90	85	270	34.8	9.4	100-110	540	80-90
	5600	95						110-120		100-110
GT-COB1313-1 SP1204	3200	96	90	85	360	34.8	12.5	90-100	720	80-90
	5600	95						100-110		90-100
GT-COB1919 SP1205	3200	96	90	85	450	34.8	15.6	100-110	900	80-90
	5600	95						110-120		100-110
GT-COB1919 SP1206	3200	96	90	85	540	34.8	18.7	100-110	1080	80-90
	5600	95						110-120		100-110
GT-COB1919 SP1208	3200	96	90	85	720	34.8	25	100-110	1440	80-90
	5600	95						110-120		100-110
GT-COB2828 SP1212	3200	96	90	85	1080	34.8	37.5	100-110	2160	80-90
	5600	95						110-120		100-110
GT-COB2828 SP1812	3200	96	90	85	1080	52.2	56.3	100-110	2160	80-90
	5600	95						110-120		100-110
GT-COB2828 SP1818	3200	96	90	85	1620	52.2	84.5	100-110	3240	80-90
	5600	95						110-120		100-110
GT-COB3838 SP1825	3200	96	90	85	2250	52.2	117.4	100-110	4500	80-90
	5600	95						110-120		100-110
GT-COB3838 SP3618	3200	96	90	85	1620	104.4	169	100-110	3240	80-90
	5600	95						110-120		100-110

3030 SMD LED

Product Type	CCT (K)	CRI	R9 (min)	TLCI	φ (lm)	Power (W)	IF (mA)	VF (V)
GT-M3030XXX	3200	96	90	85	115-125	1W	350	3.0
	5600	95			125-135			
	3200	96			115-125		175	6.0
	5600	95			125-135			



3030 SMD LED with Lens

Product Type	Color	WL/CCT (nm/k)	φ (lm)	Power (W)	VF (V)	IF (mA)
GT-M3030TXXX	Blue	460-470	15-25	1W	2.8-3.4	350
	Green	520-530	90-100			
	Red	620-630	50-60			
GT-M3030T2WX	warm white	2600-3200	140-160	1W	3.0/6.0	350/175
	pure white	4000-6500	150-170			

Ta= 25°C RH60%; 1000pcs/Reel



NEW 3535RGB

Multi-color 3535 LED

Package	Product Type	Color	WL/CCT (nm/k)	φ (lm)	Power (W)	VF (V)	IF (mA)
	GT-P35RGB (3in1)	Red	R	620-630	30-40	2.0-2.5	350
		Green	G	520-530	70-80	3.0-3.5	350
		Blue	B	455-465	15-25	3.0-3.5	350
	GT-P35RGBW (4in1)	Red	R	620-630	30-40	2.0-2.5	350
		Green	G	520-530	70-80	3.0-3.5	350
		Blue	B	455-465	15-25	3.0-3.5	350
		Yellow	W	6000-6500 4000-4500	80-110	3.0-3.5	350
	GT-P35RGBWW (4in1)	Red	R	620-630	30-40	2.0-2.5	350
		Green	G	520-530	70-80	3.0-3.5	350
		Blue	B	455-465	15-25	3.0-3.5	350
		Yellow	WW	2800-3200	80-110	3.0-3.5	350

03

Projection Lighting

- **High Reliability and Stability**
Ceramic base with flip chip mounted, no gold wire bonding
High heat conductivity with red copper substrate
High temperature eutectic welding technique
Reliable raw materials applied with super fast heat transfer
Patented phosphor coating technology
- **Outstanding Projecting Performance**
High power & lux density with super even light distribution
Minimum distance in-between chips to achieve surface emitting effect
Extremely small LES optimized for focused lighting purpose
- **Flexible Application Features**
Equiped with temperature sensor and quick connector
A wide power range from 10W to 800W optional
Suitable for stage light, projector, searchlight and long-distance lighting applications,etc



APPLICATION SCENARIOS





Logo Projector Application

GT-FC20

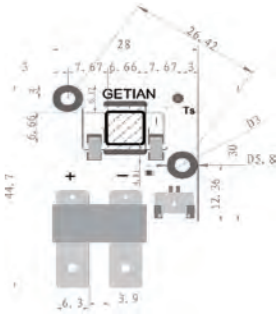
GT-FC40

Package	Product Type	LES (mm)	CCT (K)	CRI	φ (lm)	Power (W)	VF (V)	IF (A)
	GT-FC20	4.0*4.0	6000-7000	70	2000-2500	20	11-13	1.6
	GT-FC40	5.0*5.0	7000-8000	70	4000-4500	40	11-13	3.2

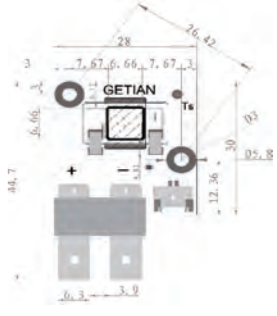


Stage Light Application

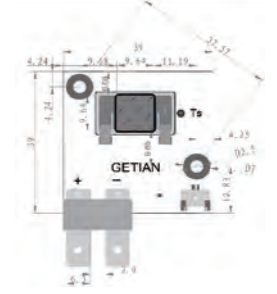
GT-FC60



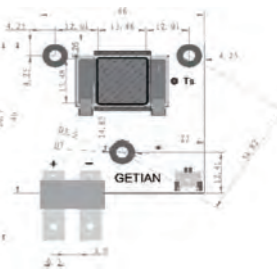
GT-FC90



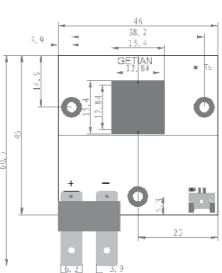
GT-FC150



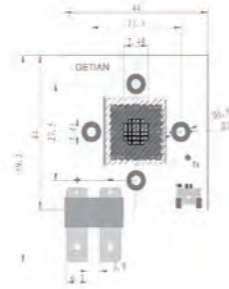
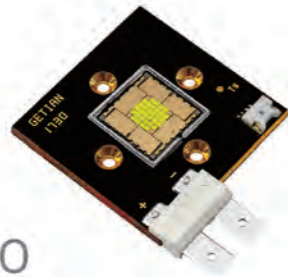
GT-FC300



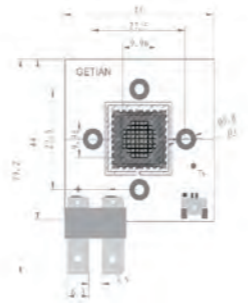
GT-FC500



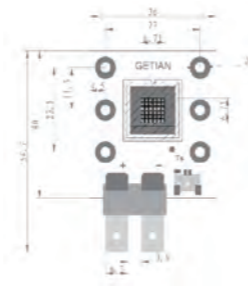
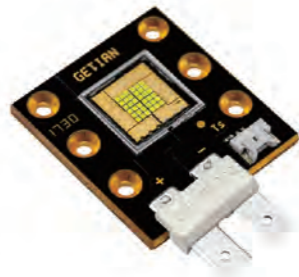
GT-FCST200



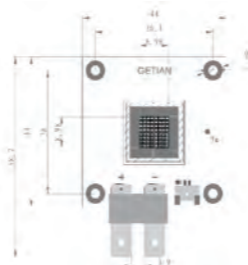
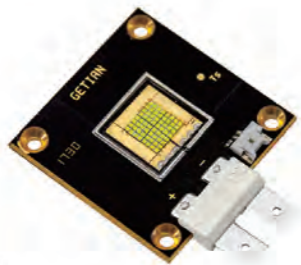
GT-FCST300



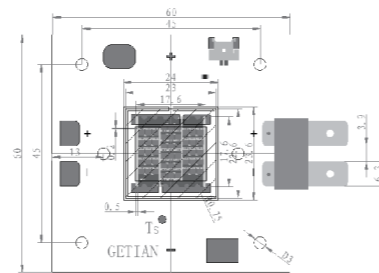
GT-PST150













GT-PST300



GT-PST800



Specifications Ta= 25C°

Package	Product Type	LES (mm)	CCT (K)	CRI	φ (lm)	Power (W)	VF (V)	IF (A)
	GT-FC60X3-1.1	6.66*6.66	8000-8500	70	4500-5000	60	15-19	3.75
	GT-FC90X3-1.1	6.66*6.66	8000-8500	70	6300-7200	90	15-19	5.5
	GT-FC150X3-1.1	9.64*9.64	8000-8500	70	10000-12000	150	21-25	6.7
	GT-FC300X3-1.1	13.48*13.48	8000-8500	70	20000-22000	300	30-36	10
	GT-FC500X3-3.0	12.84*12.84	8000-9000	70	30000-35000	500	30-36	15
	GT-FCST200X3-1.0	7.44*7.44	8000-9000	70	10000-12000	200	24-30	8
	GT-FCST300X3-1.0	9.96*9.96	8000-9000	70	18000-20000	300	38-45	7
	GT-PST150X3-1.0	6.71*6.71	8000-9000	70	10000-12000	150	10-14	12
	GT-PST300X3-1.0	8.8*8.98	8000-9000	70	18000-20000	300	10-14	24
	GT-PST800X3-1.0	17.6*17.6	8000-9000	70	50000-55000	800	45-54	15

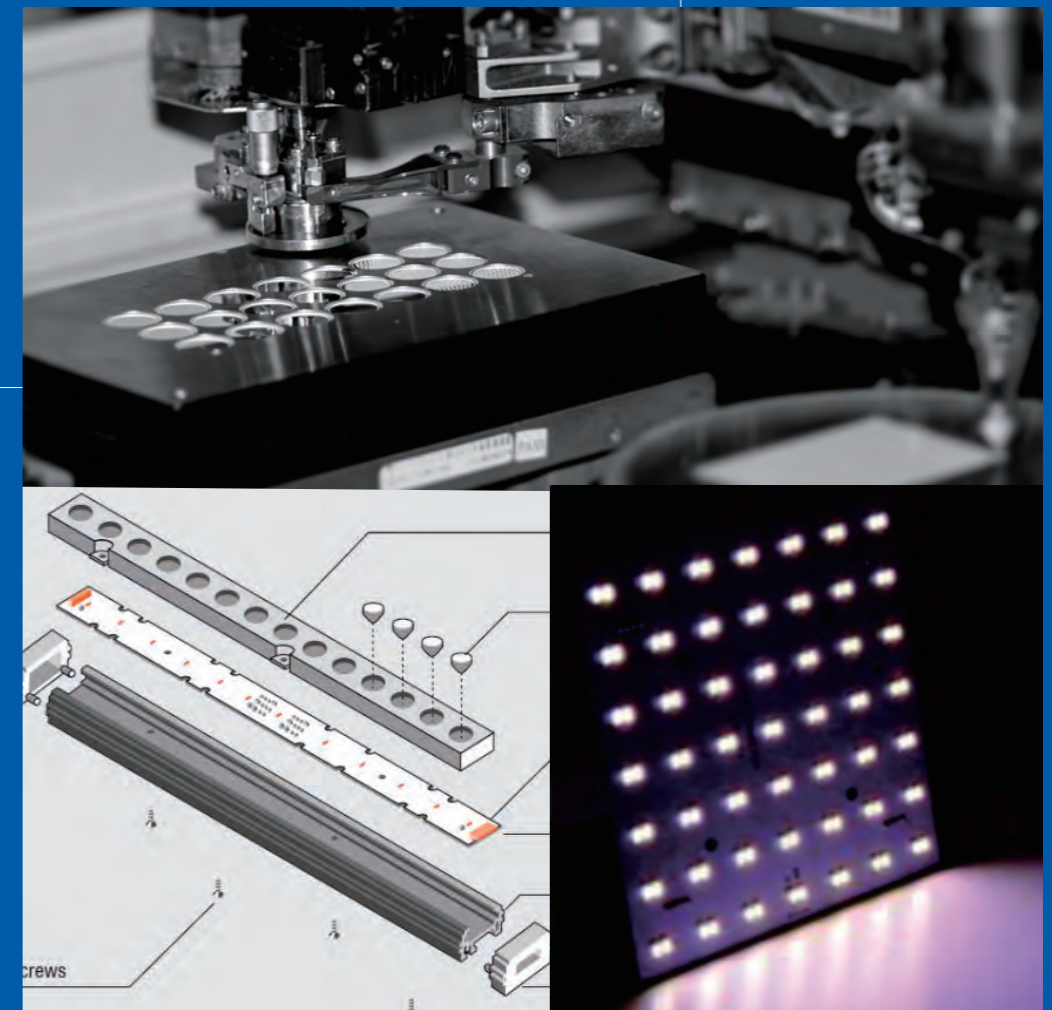
04

OEM & Custom Service

- Let us know your requirements, we make it from idea to real.
- We help our customers to design PCBs and offer soldering service
- We customize COBs or led modules as required
- We provide LEDs, LED Drivers and PCBs as an integrated solution
- We are a professional LED manufacturer to provide comprehensive & one-stop solutions to our valued customers



APPLICATION SCENARIOS



PCB Design & Soldering Custom LED & Solutions

