

Service Manual

Quartz Direct Drive Turntable System

SL-M1

[EG]



TAP is the standard mark for plug-in-connector type. Products carrying this mark are interchangeable and adaptable among each other.

Area

* [EG] is available in F.R. Germany.

Please use this manual together with the service manual for Model No. SL-M1 Order No. DPD83080027C8.

- Unlike the [E] spec., this unit is furnished with S-shaped universal tonearm, and is not provided with cartridge.
- This service manual mentions only the differences from the [E] spec.

CHANGES

■ Specifications

English

■ Tonearm section

| | | | |
|---|--|---|--|
| Type: | Universal tonearm "S" shaped tubular arm Static balanced type | Friction: | Less than 7 mg (lateral, vertical) |
| Effective length: | 230 mm (9-1/16") | Stylus pressure adjustment range: | 0 – 2.5 g |
| Arm height adjustment range: | 0 – 6 mm | Headshell weight: | 7.5 g |
| Overhang: | 15 mm (19/32") | Applicable cartridge weight range: | 6 g (using headshell for plug-in connector cartridge) |
| Effective mass: | 12 g (without cartridge) | | See page 4 |
| Tracking error angle: | Within 2°32' at the outer groove of 30 cm (12") record Within 0°32' at the inner groove of 30 cm (12") record | | (using headshell for ordinary cartridge) |

Technics

Matsushita Electric Trading Co., Ltd.
P.O. Box 288, Central Osaka Japan

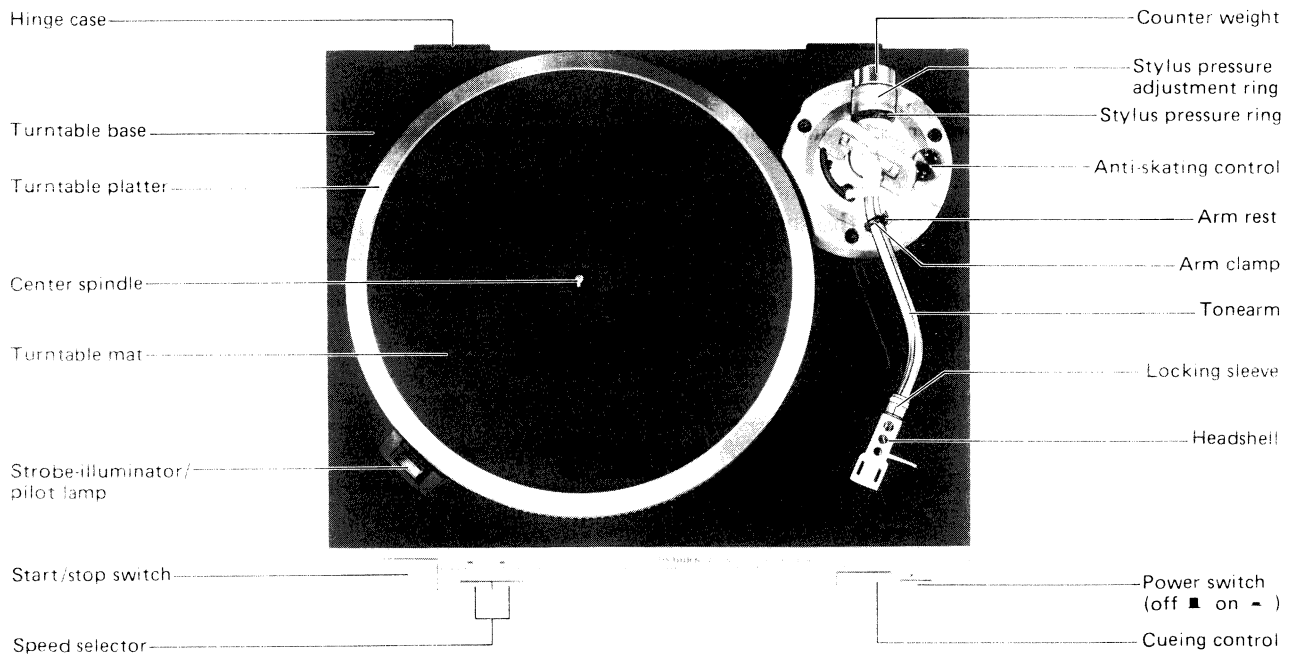
TECHNISCHE DATEN

Deutsch

Tonarm

| | | | |
|-------------------------------------|--|--|---|
| Typ: | Universaltonarm mit "S" förmigem Rohrarm statisch balanciert | Lagerreibung: | Weniger als 7 mg (horizontal, vertikal) |
| Effektive Länge: | 230 mm (9-1/16") | Auflagekraft-Einstellbereich: | 0 – 2,5 g |
| Tonarmhöhle-Einstellbereich: | 0 – 6 mm | Tonarmkopf-Gewicht: | 7,5 g |
| Überhang: | 15 mm (19/32") | Zulässiger Tonabnehmer-Gewichtsbereich: | 6 g (wenn ein Tonarmkopf für Einsteck-Tonabnehmer verwendet wird) Siehe Seite 4. (wenn ein Tonarmkopf für Normtonabnehmer verwendet wird) |
| Effektive Masse: | 12 g (ohne Tonabnehmer) | | |
| Spurfehlwinkel: | Innerhalb 2°32' bei der Einlauftrille einer 30 cm-Platte Innerhalb 0°32' bei der Auslauftrille einer 30 cm-Platte | | |

LOCATION OF CONTROLS



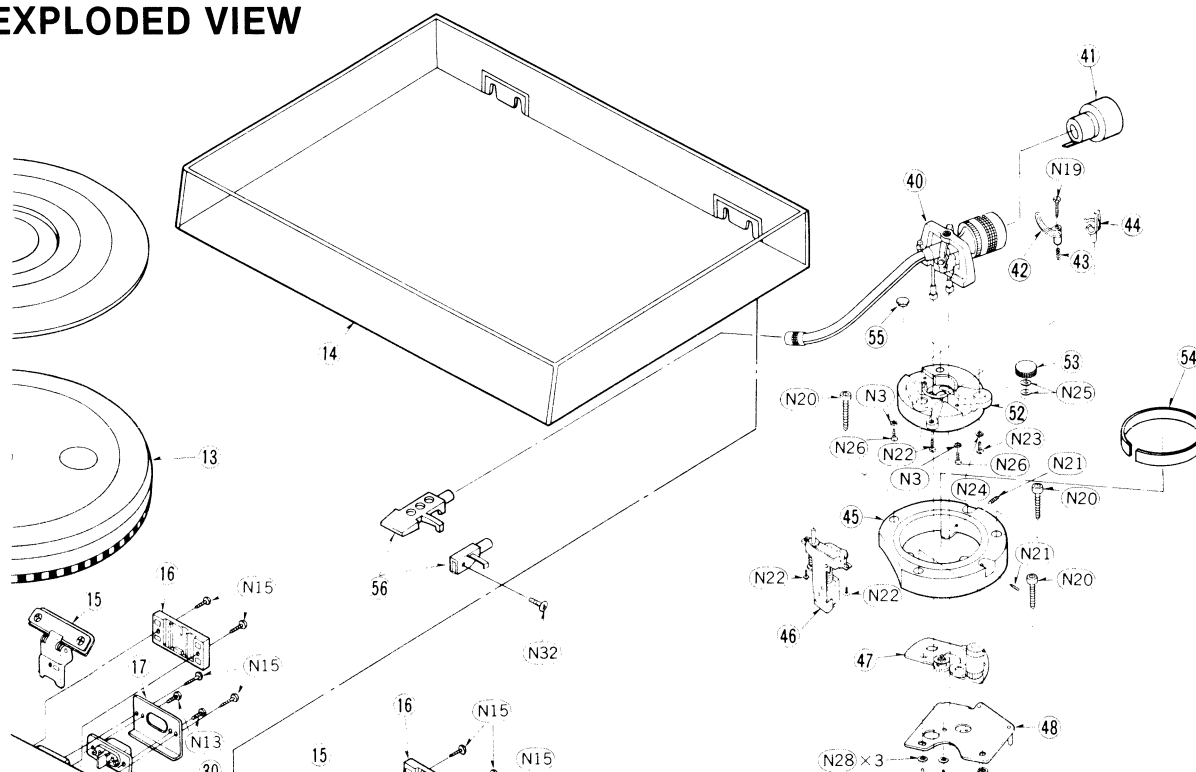
REPLACEMENT PARTS LIST

Note: (1) Mentioned in this parts list are only those changed in Model No. SL-M1 for destination [E] area.

| Ref. No. | Change of Part No. | | Description | Per Set (Pcs.) | Remarks |
|---------------------------------|--------------------|--------------|----------------|----------------|---------|
| | SL-M1 [E] | → SL-M1 [EG] | | | |
| CABINET and CHASSIS PART | | | | | |
| 30 | SFNNM01S01 | SFNNM01R01 | Name Plate | 1 | |
| TONEARM PARTS | | | | | |
| 40 | SFPAM0M102R | SFPAM0M101R | Tonearm Ass'y | 1 | |
| 41 | SFPWG0M102A | SFPWG0M101A | Counter Weight | 1 | |
| 44 | SFPRT0M101E | SFPRT17201K | Arm Rest | 1 | |
| 56 | EPC-P33AK | Deletion | _____ | 0 | |
| | EPS-33ES | Deletion | _____ | 0 | |

| Ref. No. | Change of Part No. | | Description | Per Set (Pcs.) | Remarks |
|---------------------|--------------------|--------------|-----------------------|----------------|---------|
| | SL-M1 [E] | → SL-M1 [EG] | | | |
| TONARM PARTS | | | | | |
| 56 | Addition | SFPC0M101A | Headshell (Universal) | 1 | |
| 56 | Addition | SFPC08001E | Headshell (Plug-in) | 1 | |
| 57 | SFCNC03301 | Deletion | _____ | 0 | |
| ACCESSORIES | | | | | |
| A1 | SFNUM01S01E | SFNUM01R01 | Instruction Book | 1 | |
| A5 | Addition | SFCZB30505 | Shell Weight | 1 | |
| A6 | Addition | SFPWG0M103E | Sub-Weight | 1 | |
| A7 | Addition | SFK0135-01 | Gage, Overhang | 1 | |

EXPLODED VIEW



ADDITION

MEASUREMENTS AND ADJUSTMENT English

• Adjustment of arm height (Fig. 23)

When adjusting the arm height according to the cartridge used, loosen the adjusting screw and vertically move the arm support to set the arm height so that the arm is horizontal in record play mode.

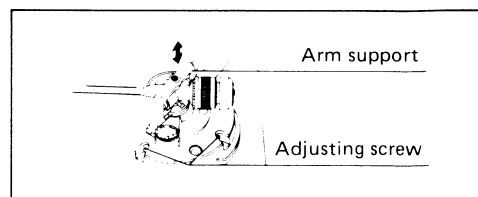


Fig. 23 (Abb. 23)


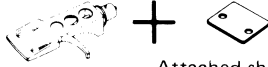

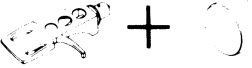
MEASSUNGEN UND JUSTIERUNGEN Deutsch

• Justierung der Tonarmhöhe (Abb. 23)

Falls der von Ihnen verwendete Tonabnehmer eine andere Tonarmhöhe erfordert, die Einstellschraube lösen und den Armsupport so anheben oder senken, daß der Tonarm beim Abspielen einer Schallplatte horizontal ist.

WEIGHT OF CARTRIDGE USED

When a shell for ordinary cartridge is used, the cartridge can be used as shown in the table below, using the attached shell weight and auxiliary weight.

| Combination with shell for ordinary cartridge | Usable cartridge | | | | | | | | | | | | |
|---|------------------|--|---|---|---|---|---|---|---|----|----|----|-----|
| | Stylus pressure | Weight of cartridge (incl. the weight of cartridge setscrew) | | | | | | | | | | | |
| | | 2 | 3 | 4 | 5 | 6 | 7 | 8 | 9 | 10 | 11 | 12 | 13g |
|  Head shell only (7.5 g) | 0 ~ 1 | 5.5 [] 8 | | | | | | | | | | | |
| | 1 ~ 1.5 | 6 [] 8 | | | | | | | | | | | |
| | 1.5 ~ 2 | 6.5 [] 8 | | | | | | | | | | | |
| | 2 ~ 2.5 | 7 [] 8 | | | | | | | | | | | |
|  Attached shell weight | 0 ~ 1 | 3.5 [] 6 | | | | | | | | | | | |
| | 1 ~ 1.5 | 4 [] 6 | | | | | | | | | | | |
| | 1.5 ~ 2 | 4.5 [] 6 | | | | | | | | | | | |
| | 2 ~ 2.5 | 5 [] 6 | | | | | | | | | | | |
|  Attached auxiliary weight | 0 ~ 1 | 7.5 [] 10 | | | | | | | | | | | |
| | 1 ~ 1.5 | 8 [] 10 | | | | | | | | | | | |
| | 1.5 ~ 2 | 8.5 [] 10 | | | | | | | | | | | |
| | 2 ~ 2.5 | 9 [] 10 | | | | | | | | | | | |
|  Attached auxiliary weight | 0 ~ 1 | 9.5 [] 12 | | | | | | | | | | | |
| | 1 ~ 1.5 | 10 [] 12 | | | | | | | | | | | |
| | 1.5 ~ 2 | 10.5 [] 12 | | | | | | | | | | | |
| | 2 ~ 2.5 | 11 [] 12 | | | | | | | | | | | |