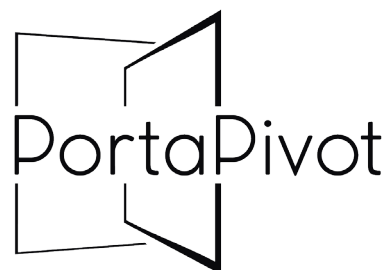


# DOOR INSTALLATION MANUAL

- Custom door leaf
- PortaPivot 6530
- PortaPivot 5045
- PortaPivot Glass

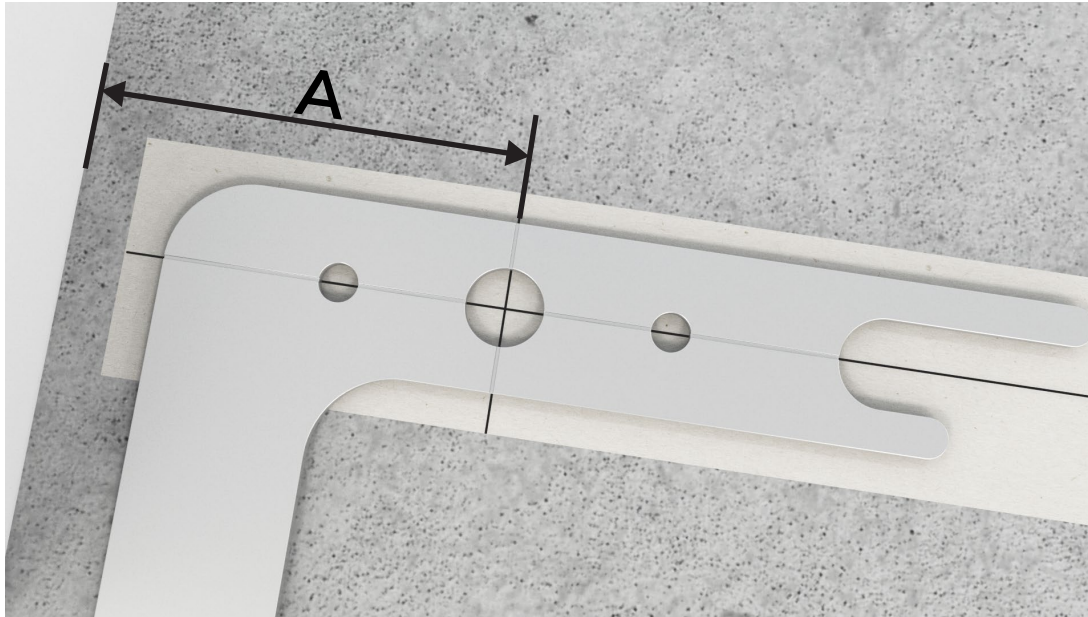
This installation manual applies to both locally manufactured door leaves and PortaPivot door systems

Watch our instruction videos on [www.portapivot.com](http://www.portapivot.com)



STEALTHPIVOT  
By PortaPivot

# Drill pivot mount holes



Mark the center of the hinge on a layer of masking tape on the floor (according to your doorway and door leaf measurements!).

A = pivot axis position in doorleaf + joint

Align the drill tool exactly on top of the center lines and mark the 2 drilling holes.

Drill both holes with an 8 mm drill, +/-45 mm deep.

Install Hilti plugs.

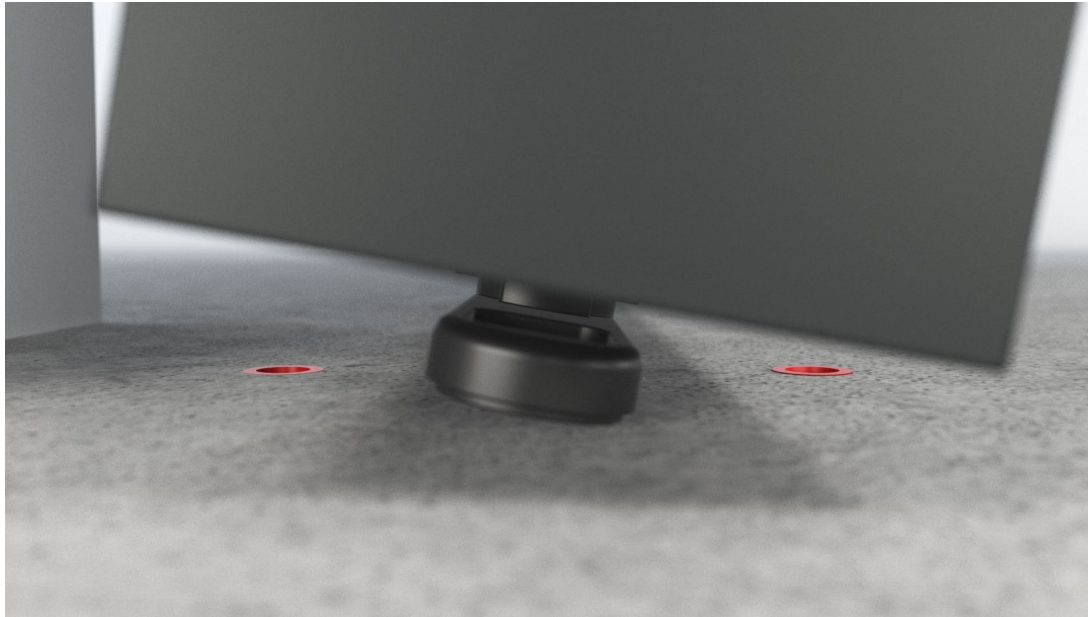
Depending on subsurface, different plugs may be required.





Use a laser to project and mark both holes to the ceiling. Drill holes and insert Hilti plugs.

# Door leaf installation

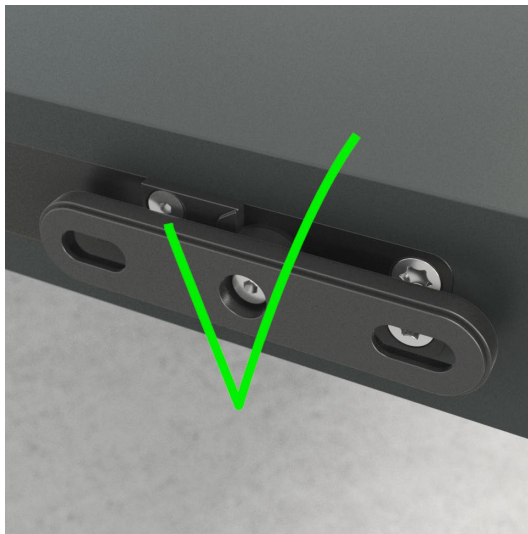


Place the door leaf in the doorway, with both pivots in their closed position.

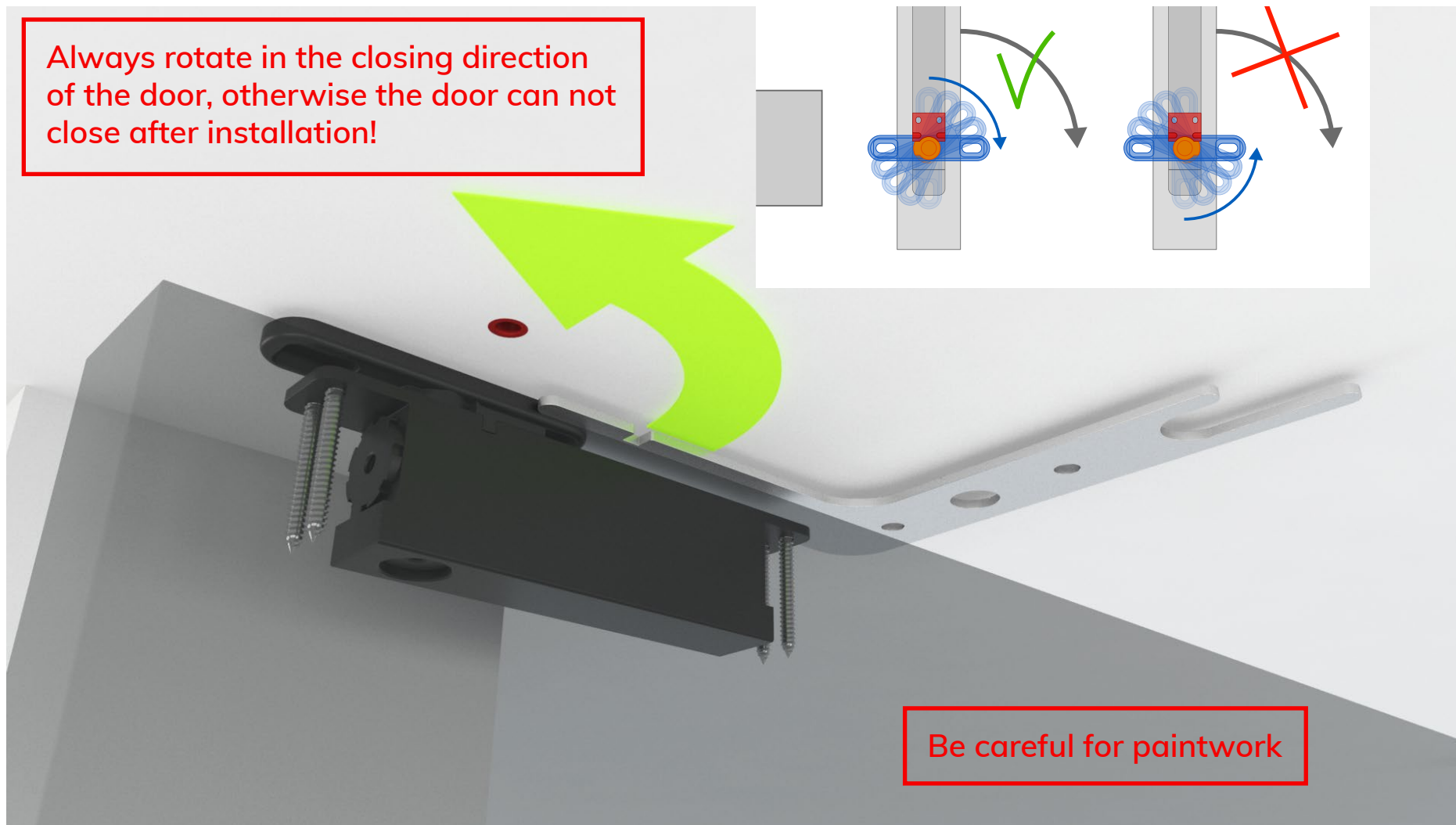
Position the bottom pivot in between the 2 mounting holes at the axis position.

Next tilt the door leaf upright.

Be careful when manipulating the self closing pivot. This will snap into position with a large force!







Use the drill tool to rotate the pivot mount in place. Repeat for the bottom pivot mount.

Be careful when manipulating the self closing pivot. This will snap into position with a large force!

StealthPivot and StealthPivot XL share identical installation steps (displayed = StealthPivot).



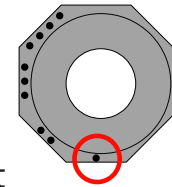
Use included shims where needed (preferably under the bottom pivot hinge, depending on your measurements).

TOP first!



Secure top pivot first!

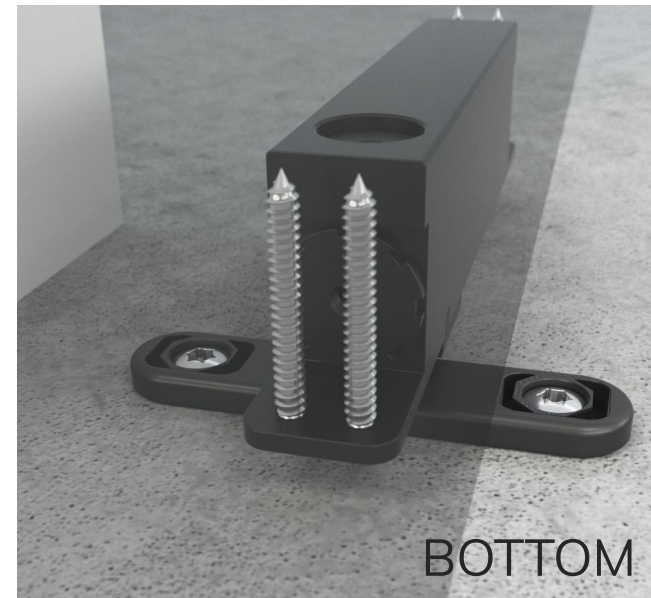
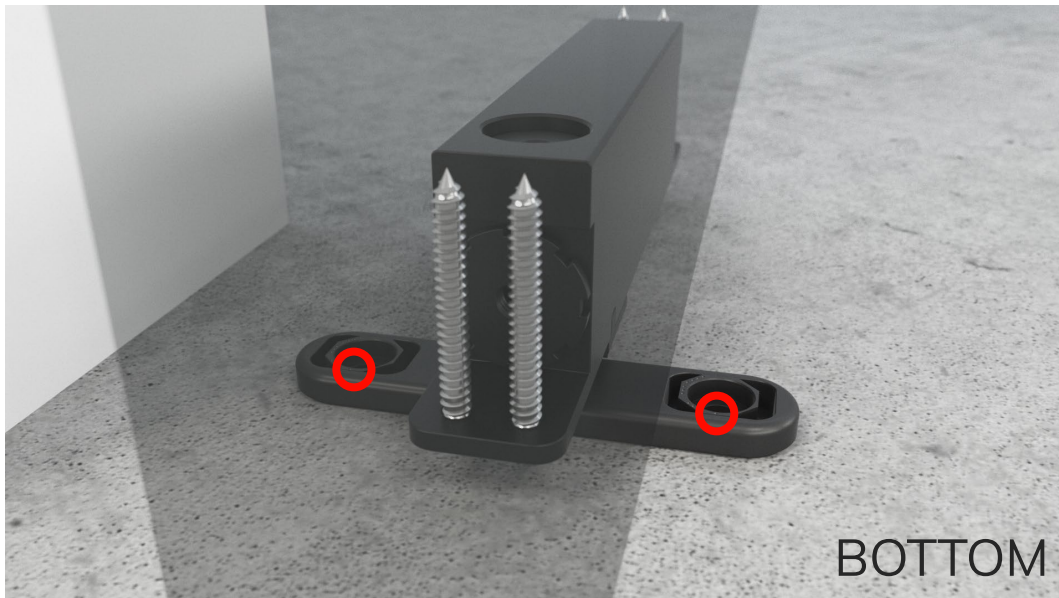
Install hexagonal insert at position 1, insert screw but do not tighten fully yet.



Repeat for second insert and screw.

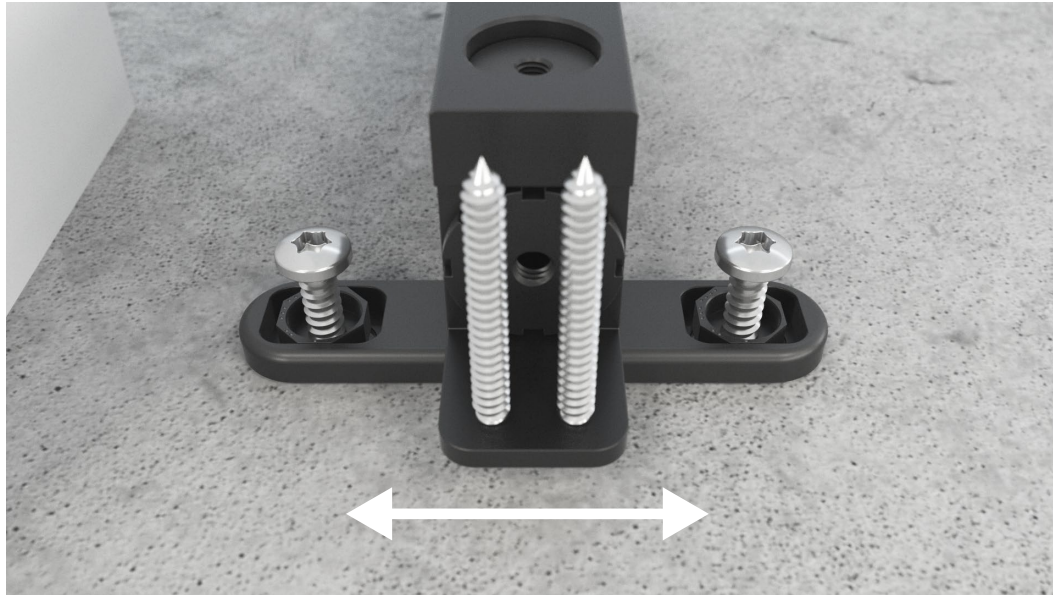
Repeat former steps for bottom pivot.

Make sure that all inserts are placed at position 1, all facing the same side.



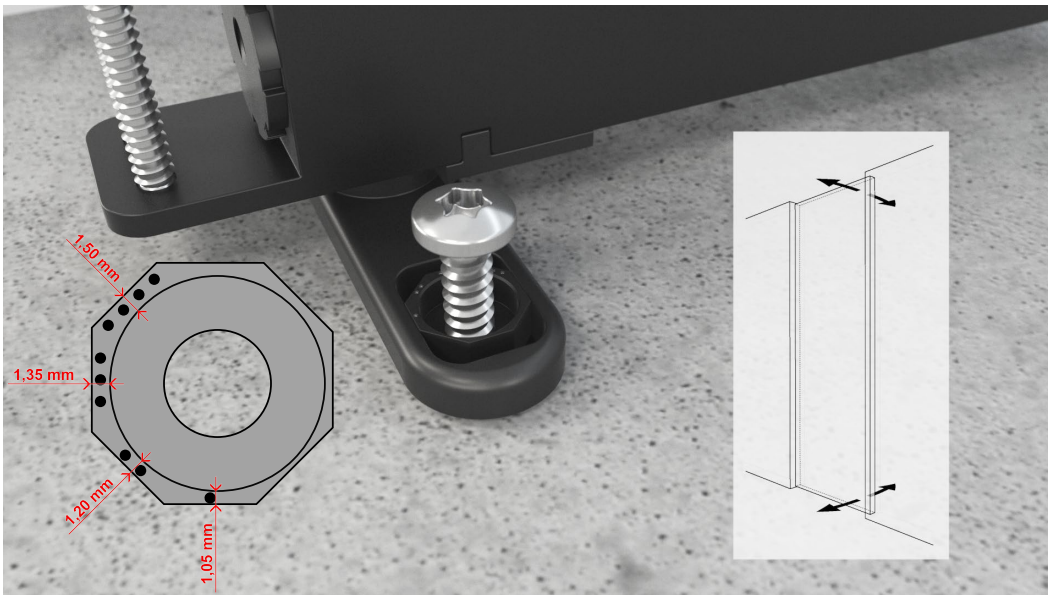
StealthPivot and StealthPivot XL share identical installation steps (displayed = StealthPivot).

# Final adjustments for joints and 0° positioning



To move the door leaf slightly left or right to adjust the joints, loosen the screws and adjust.

After adjustment, remember to tighten screws.



The hexagonal inserts are used to finetune the door leaf angle to 0°.

The optional magnets can also be used for 0° positioning.

The magnets will ensure correct 0° positioning over a longer period of time.

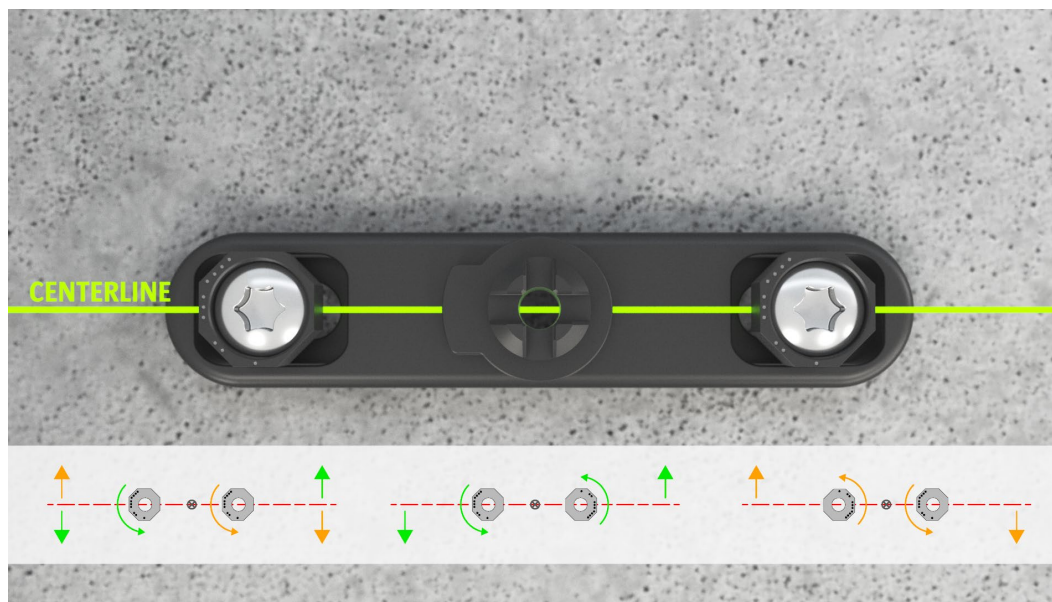
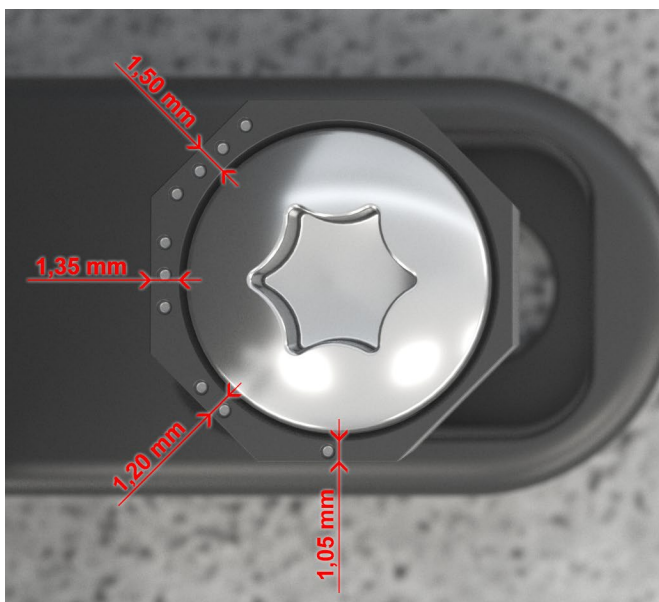




Loosen the screws, and use pliers to lift the insert out of the pivot foot.

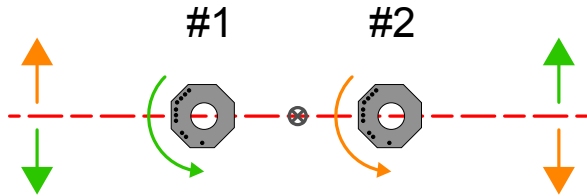
The inserts are excentric, so each position will affect the centerline angle fo the door leaf.

The view below shows the effect on the centerline angle when rotating the inserts to different positions.

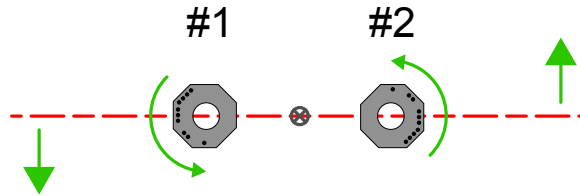


StealthPivot and StealthPivot XL share identical installation steps (displayed = StealthPivot).

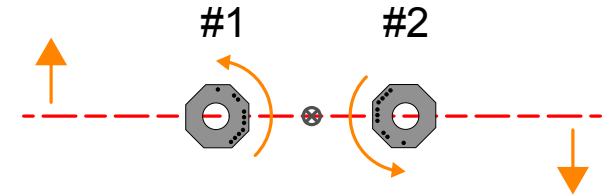
# Correction angle diagram for 0° adjustment



#1	#2	angle
1	1	0,00
1	2	0,13
1	3	0,25
1	4	0,38
2	1	-0,13
2	2	0,00
2	3	0,13
2	4	0,25
3	1	-0,25
3	2	-0,13
3	3	0,00
3	4	0,13
4	1	-0,38
4	2	-0,25
4	3	-0,13
4	4	0,00

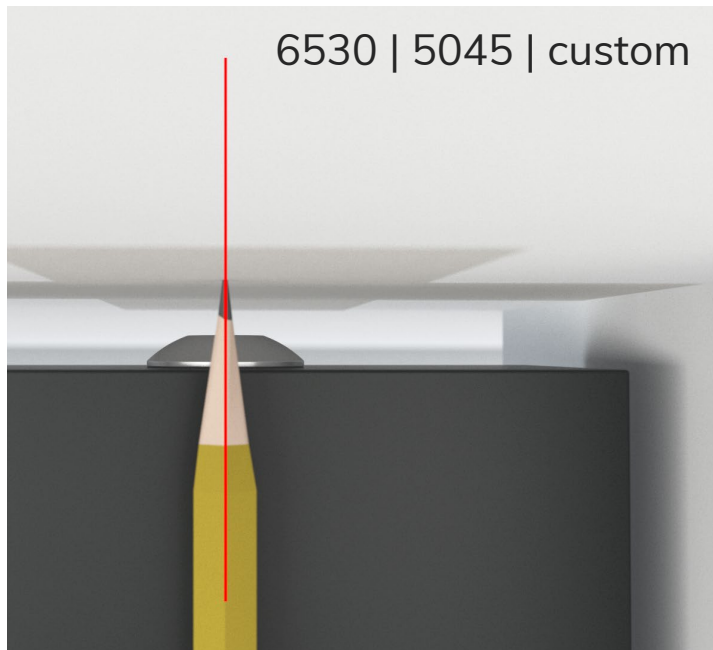


#1	#2	angle
1	1	0,00
1	2	-0,13
1	3	-0,25
1	4	-0,38
2	1	-0,13
2	2	-0,25
2	3	-0,38
2	4	-0,51
3	1	-0,25
3	2	-0,38
3	3	-0,50
3	4	-0,63
4	1	-0,38
4	2	-0,50
4	3	-0,63
4	4	-0,76



#1	#2	angle
1	1	0,00
1	2	0,13
1	3	0,25
1	4	0,38
2	1	0,13
2	2	0,25
2	3	0,38
2	4	0,51
3	1	0,25
3	2	0,38
3	3	0,51
3	4	0,63
4	1	0,38
4	2	0,50
4	3	0,63
4	4	0,76

# Optional 0° positioning magnet on ceiling



Carefully mark the center of the doorleaf and the center of the magnet onto the ceiling.



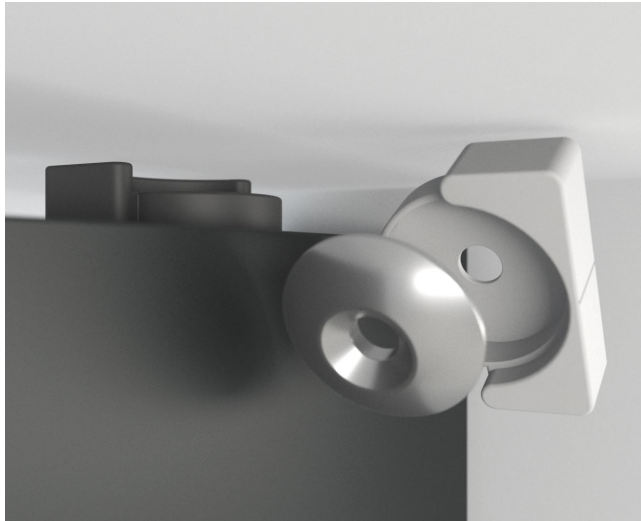
Drill the hole and install the magnet with Hilti plug and screw.



\*If necessary, use optional shims for height adjustments of the magnets.

For XL versions, you can mount a magnet on both sides of the ceiling to ensure 0° positioning.

# Optional 1-way on ceiling



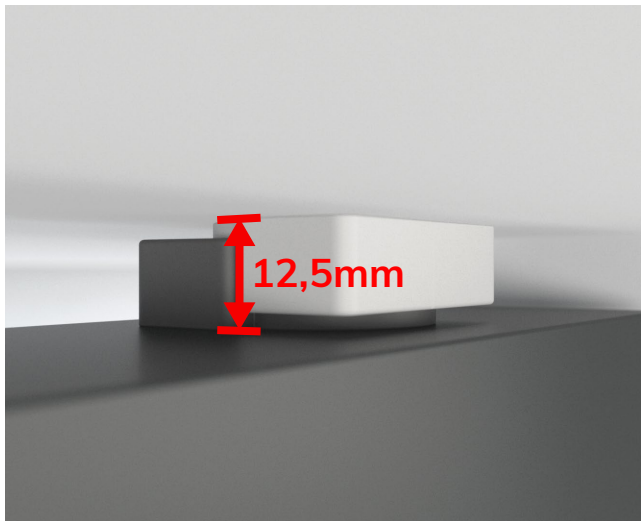
6530 | 5045 | custom



Glass doors

Remove the magnet out of the ceiling 1-way part.

Position the ceiling 1-way against the door leaf 1-way and hold it in place while opening the door.





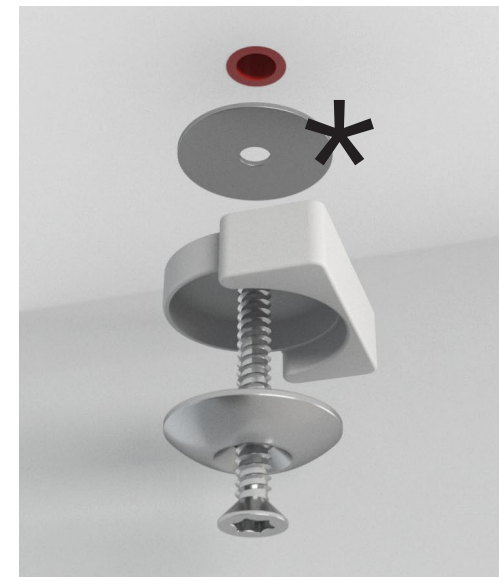


Mark the center of the 1-way.

Drill the hole and install the magnet and 1-way with Hilti plug and screw.

\*If necessary, use optional shims for height adjustments of the magnets.

For XL versions, you can mount a magnet on both sides of the ceiling to ensure 0° positioning.



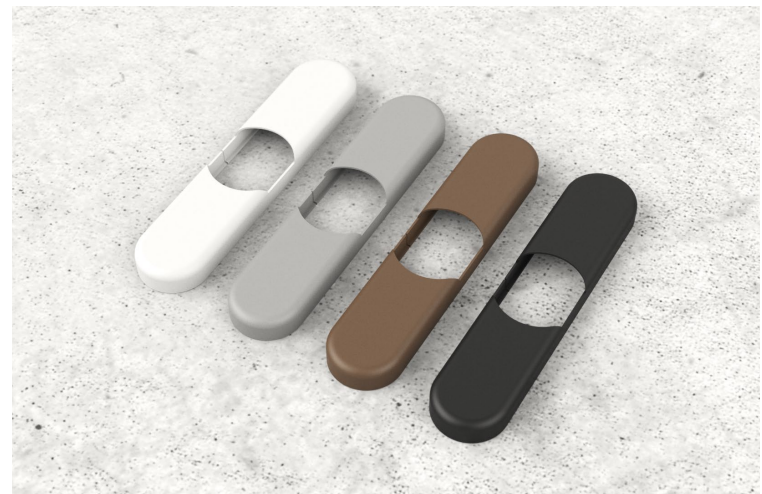
# Minimize visible components



A supplied colored cover can be placed to hide the screws and to blend with your floor or ceiling.

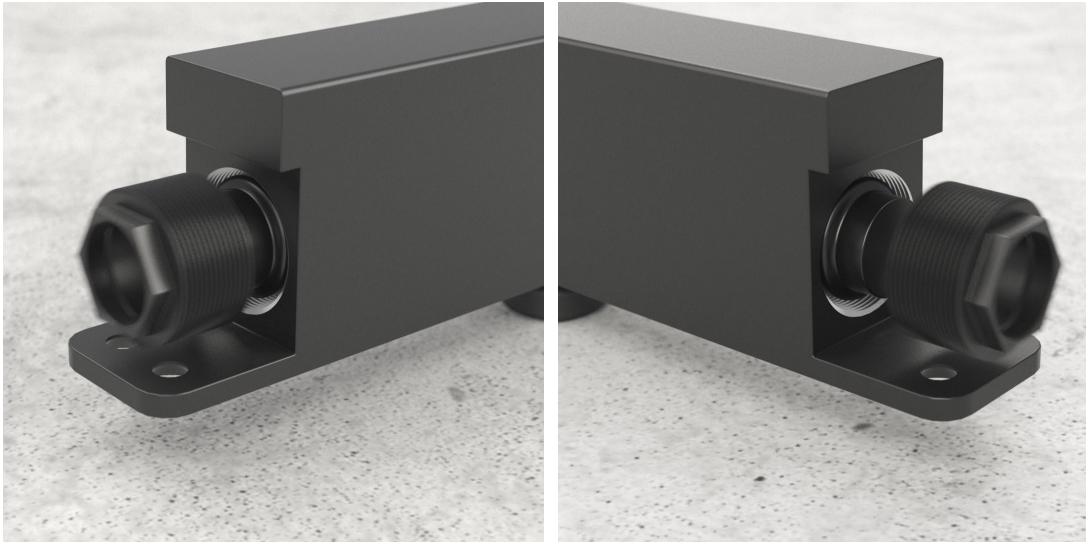


Different colors are available at [www.portapivot.com](http://www.portapivot.com)



StealthPivot and StealthPivot XL share identical installation steps (displayed = StealthPivot).

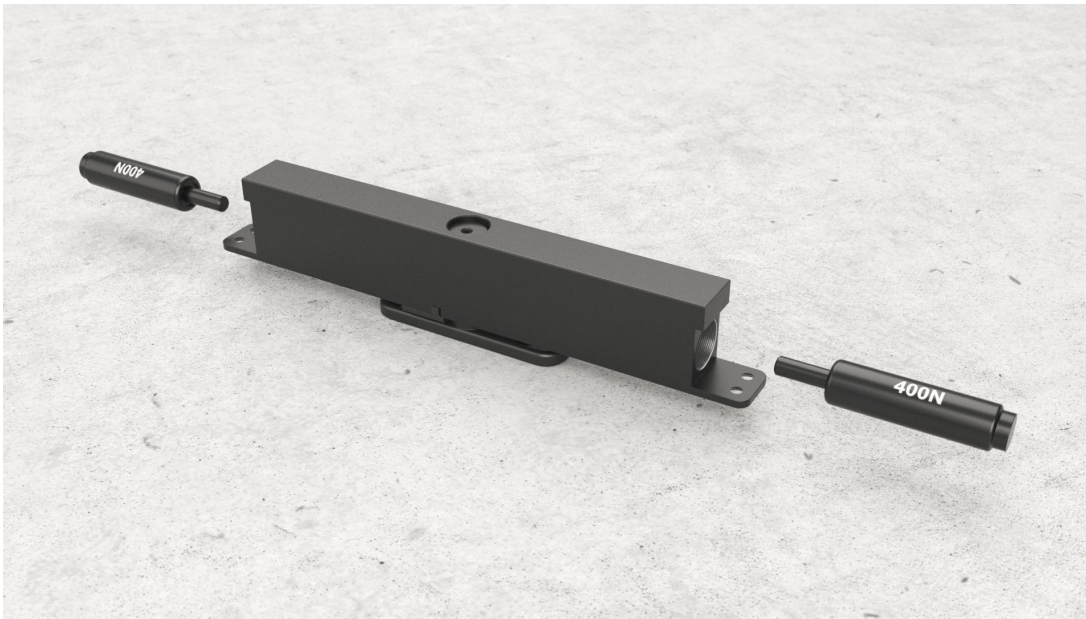
# Adjustable closing force



The pivot closing force can be adjusted by changing the default gas springs.

Screw off both end caps, remove the gas springs and replace them.

Screw both caps back on.



StealthPivot XL set:

Default = 2x 400N

Optional\* = 2x 300N or 2x 500N

StealthPivot Normal set:

Default = 2x 300N

Optional\* = 2x 400N or 2x 500N

\*Can be purchased separately on our website  
[www.portapivot.com](http://www.portapivot.com)



# Finished product



Custom door leaf

PortaPivot 6530

PortaPivot Glass

PortaPivot 5045