

MOUNTING DOORGRIPS

DG08-09-11-12



DG.08



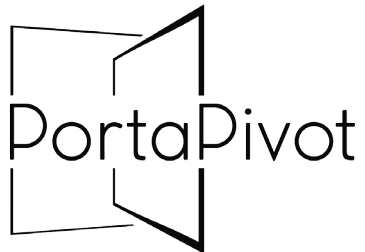
DG.09



DG.11



DG.12

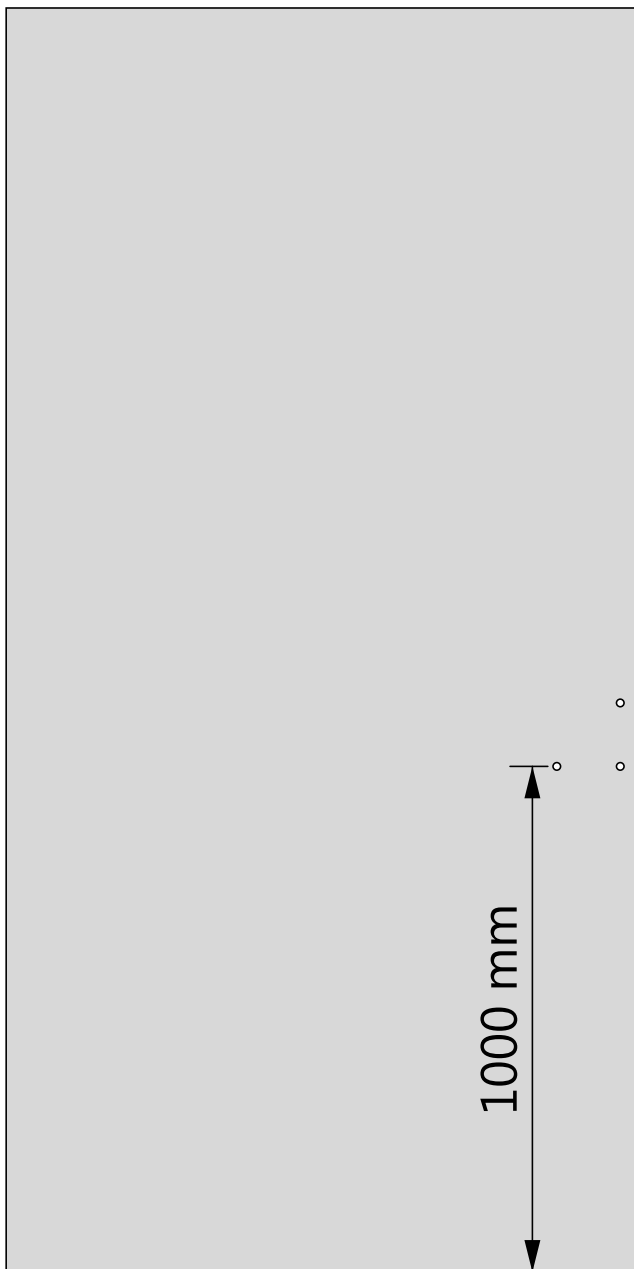


Watch our instruction videos on www.portapivot.com

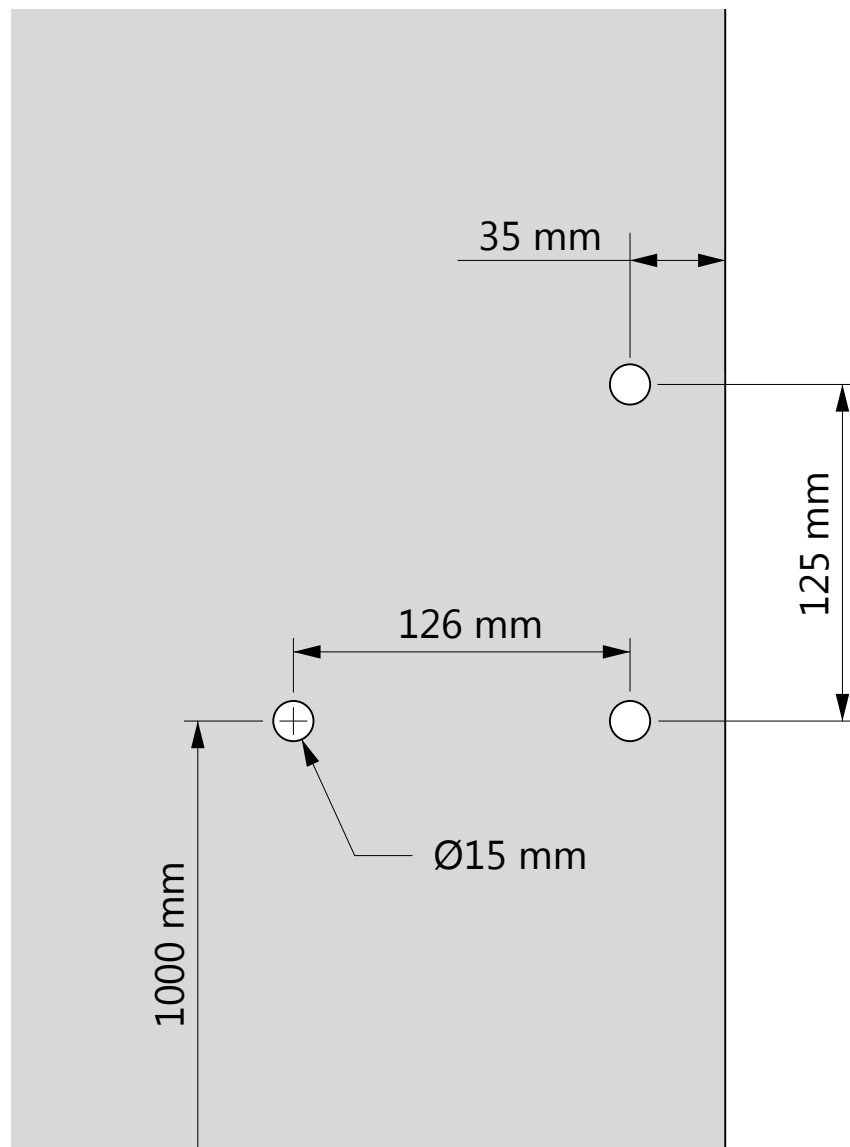
Patented technology

STEALTHPIVOT

By PortaPivot

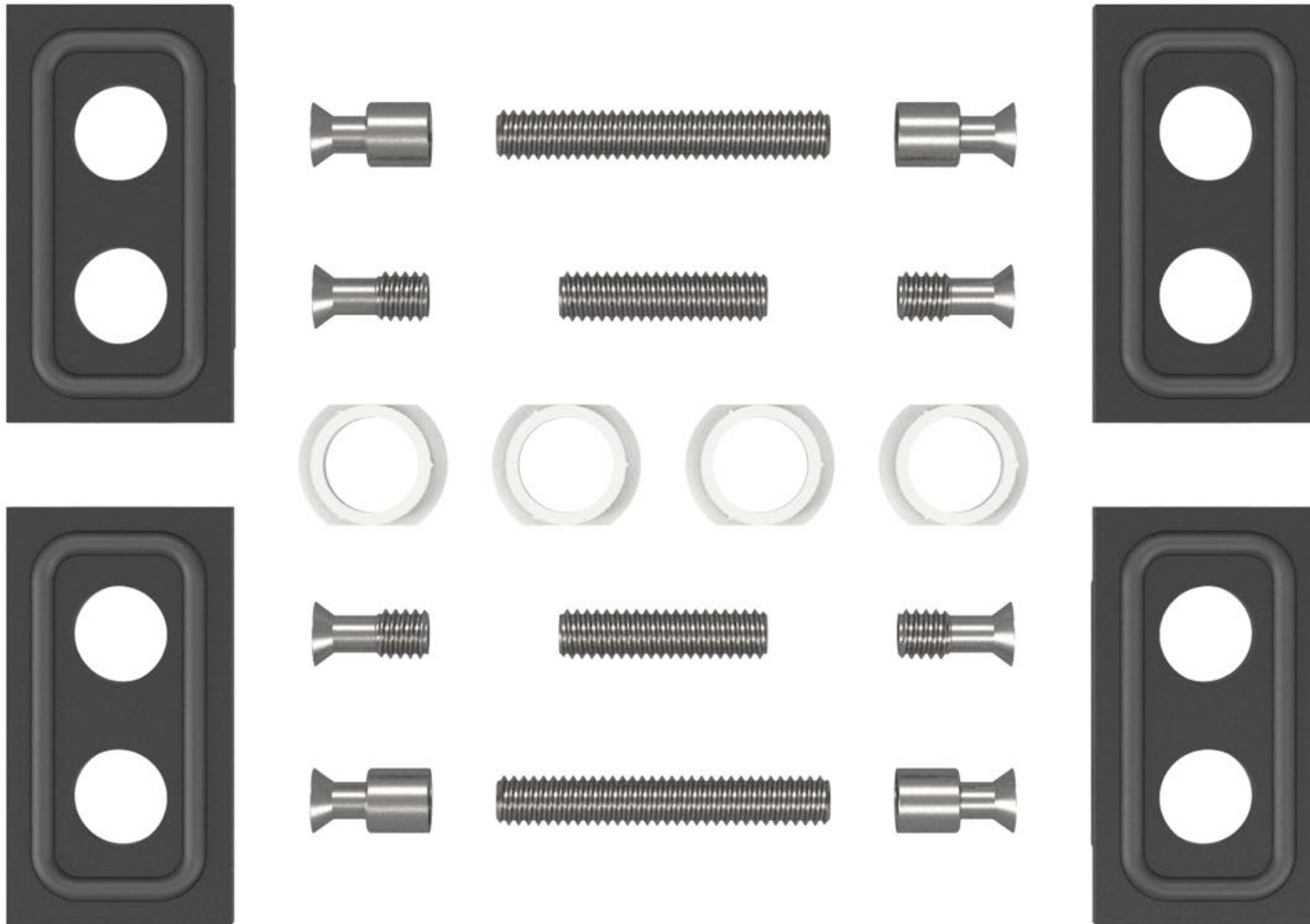


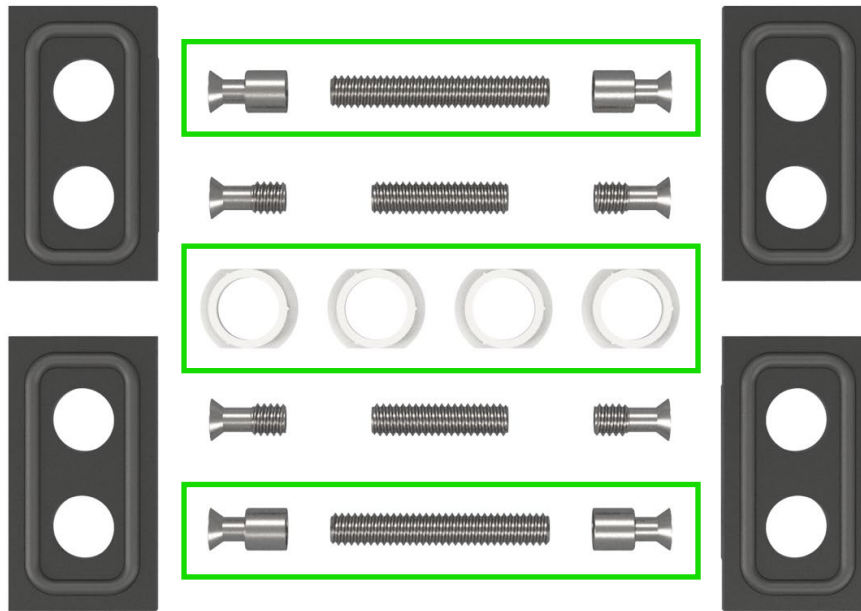
Mounting locations



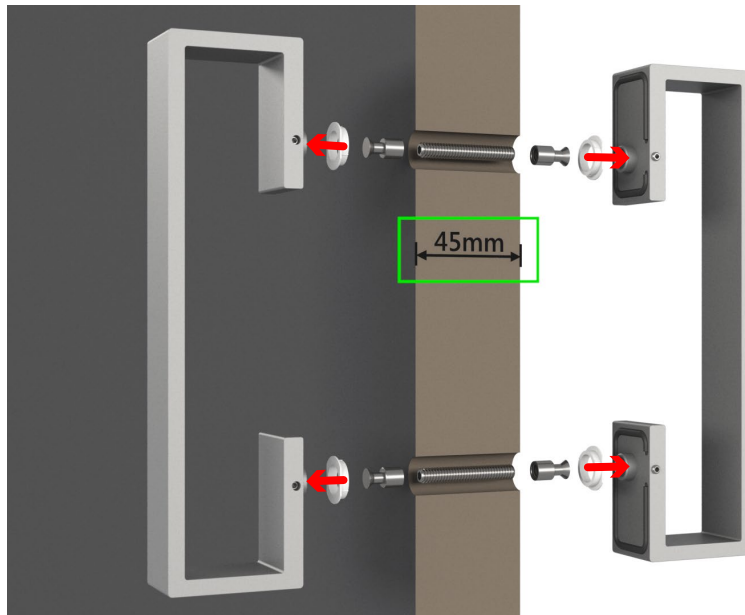
Mounting hardware

(Depending on the door leaf thickness, different mounting parts are needed)

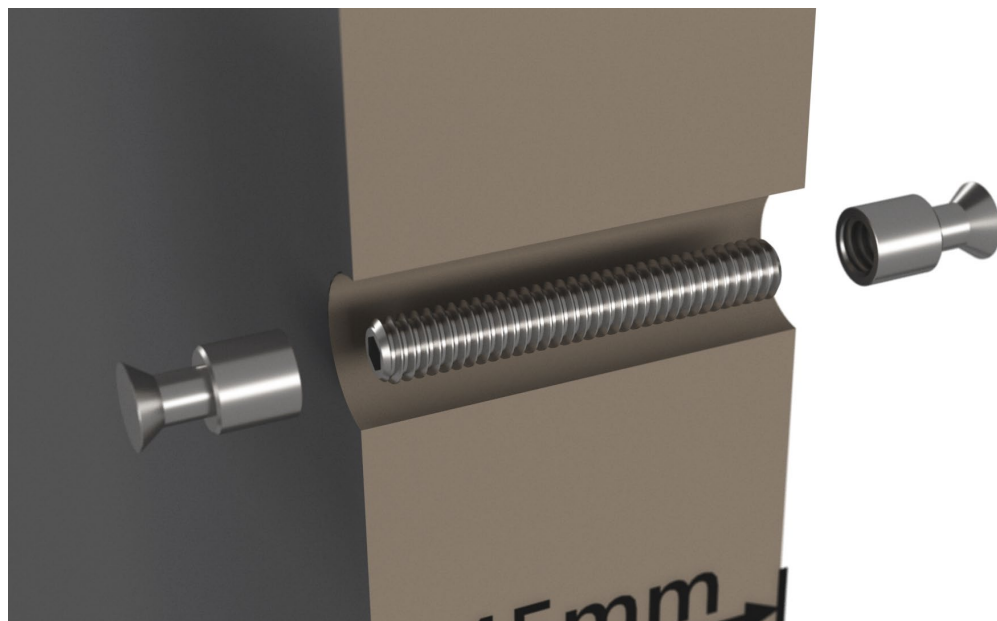




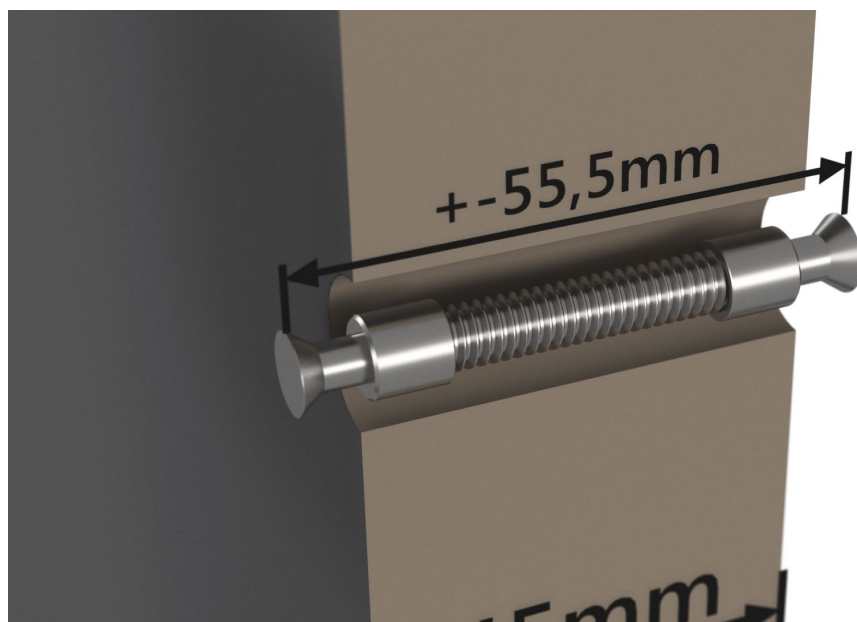
Parts necessary for door leaf
thickness from 43 tot 52 mm.



Slide the nylon bushings over the door
handles as shown.



Screw both ends to the thread.

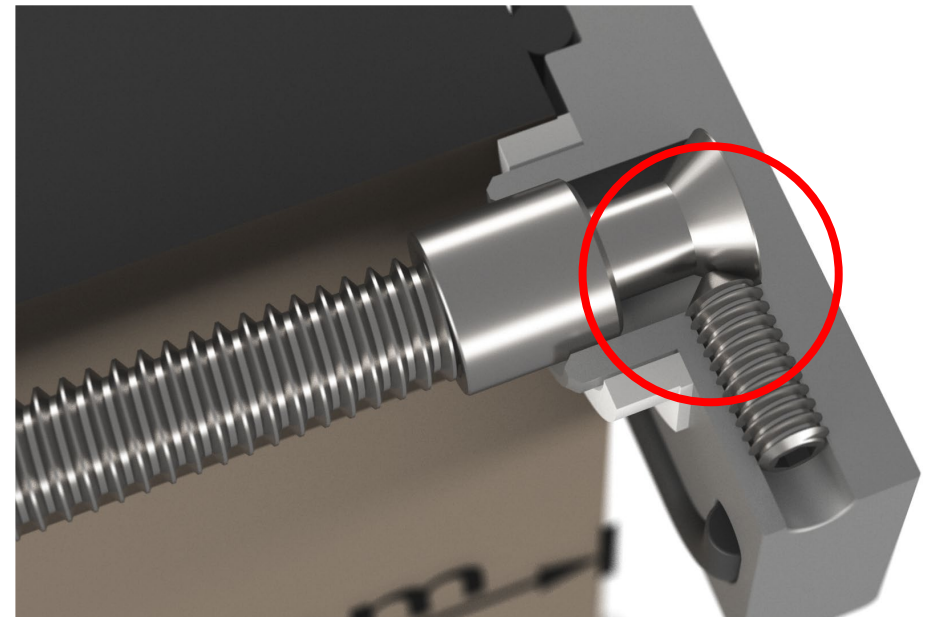
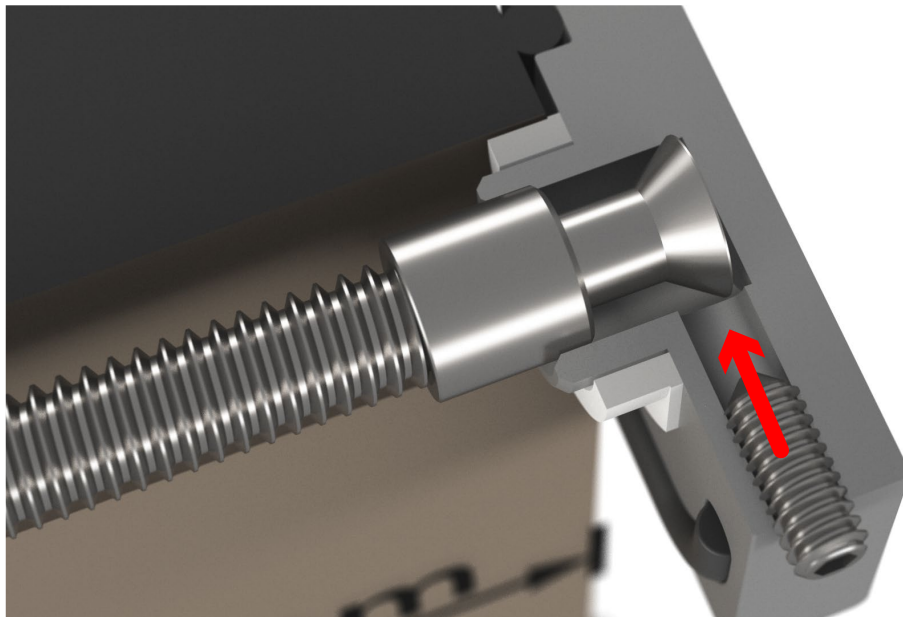


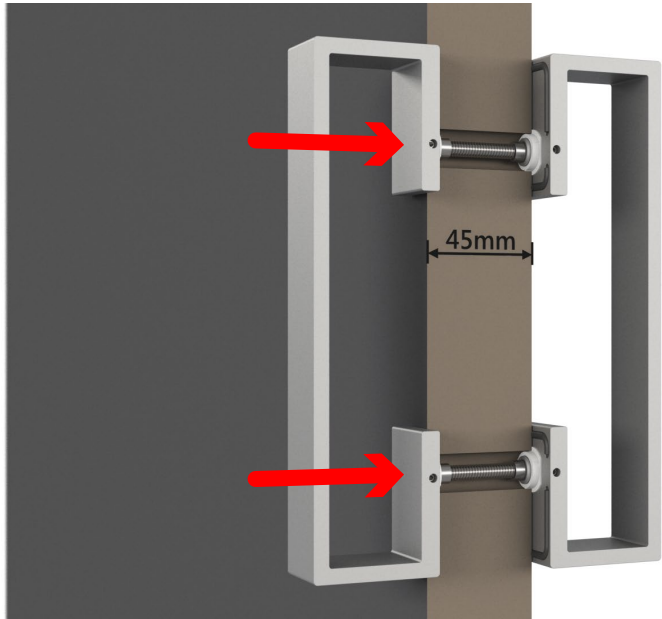
Total length = door leaf width + 10,5 mm



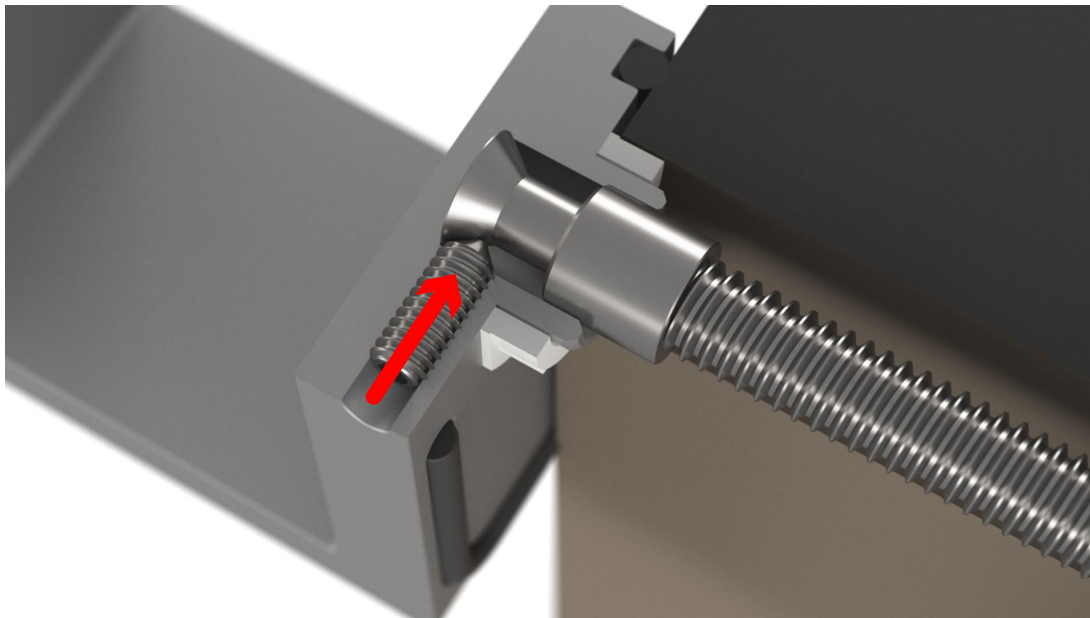
Insert the 2 rods into the handle, and tighten the 2 inbus screws.

This will pull back the rod completely in the handle.

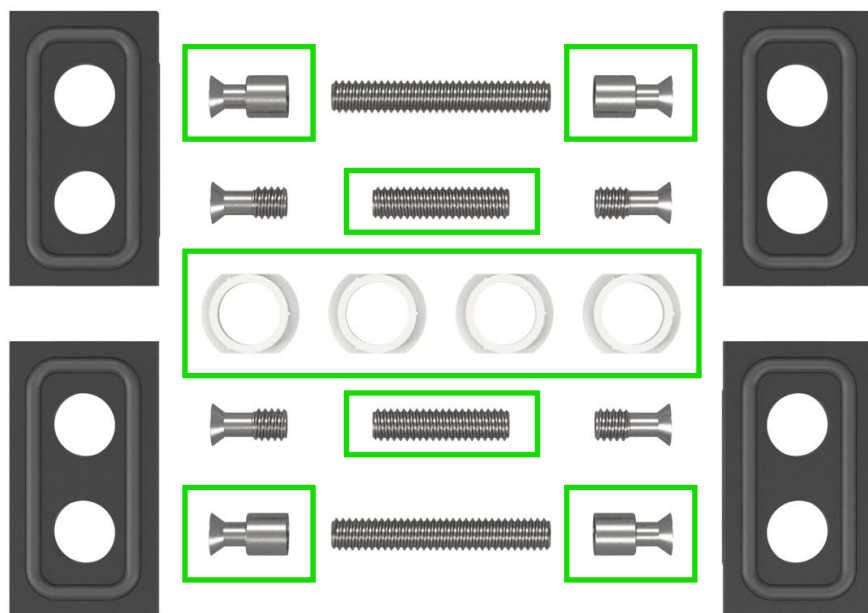




Insert the handle with its 2 rods into the door leaf, and place the other handle on the other side over the rod ends.



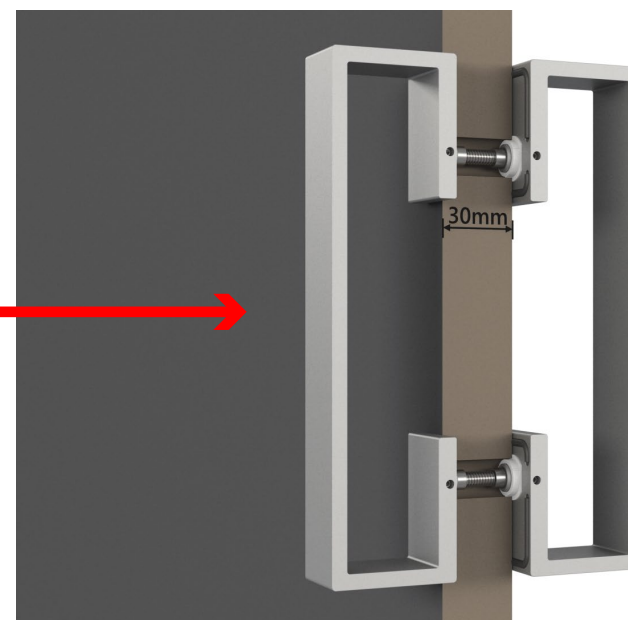
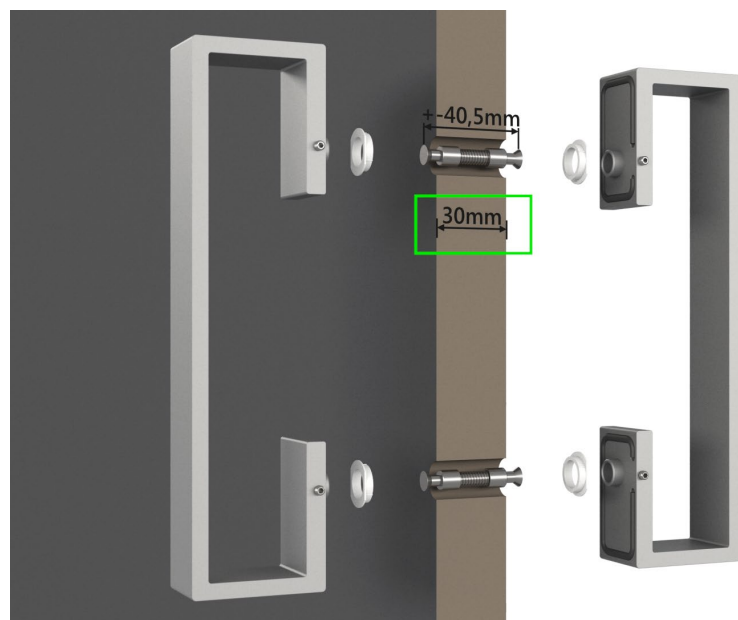
Tightening the 2 inbus screws will pull both handles closer to each other, locking them firmly to the door leaf.

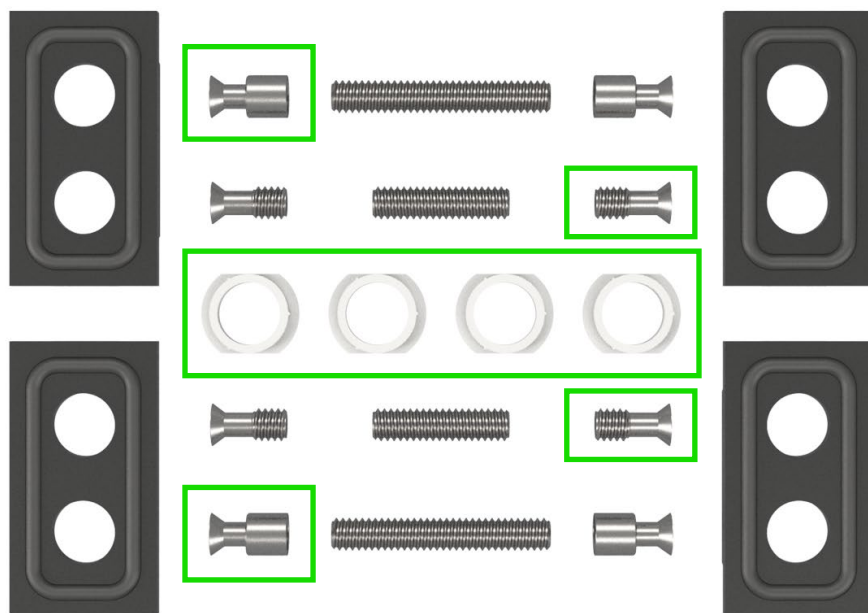


Parts necessary for door leaf
thickness from 30 tot 36 mm.

Follow the same steps from page 4 to 7,
using the short threaded rod.

Total rod length = door leaf width + 10,5 mm



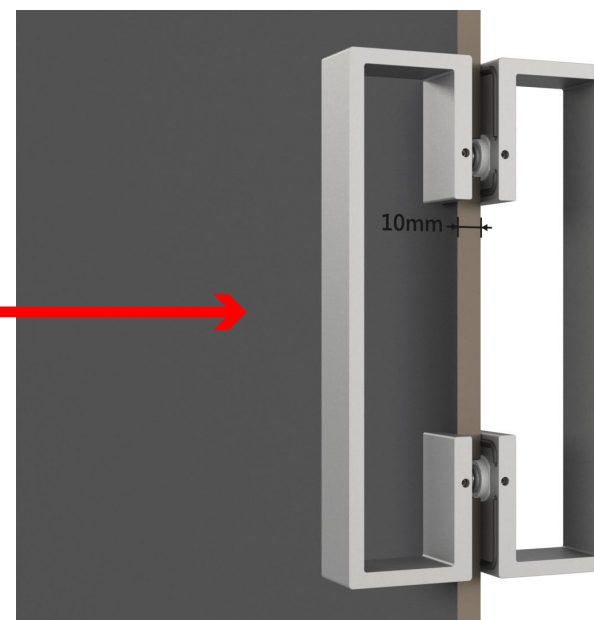
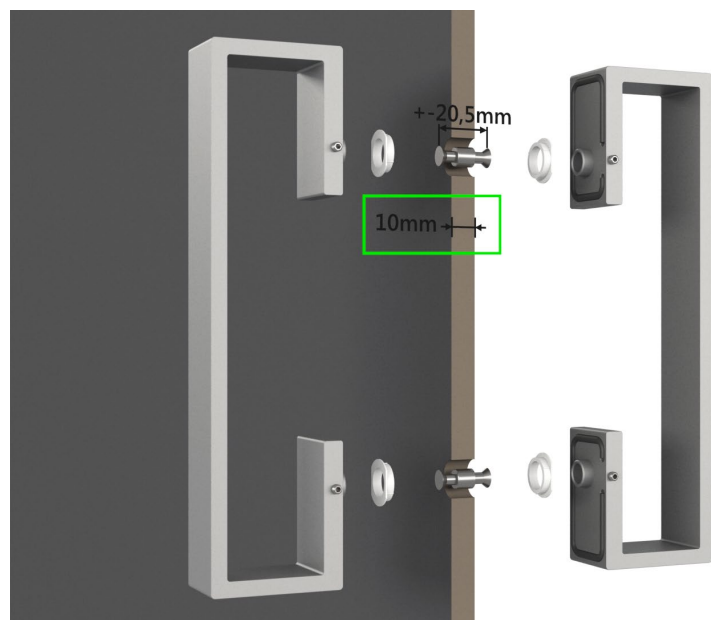


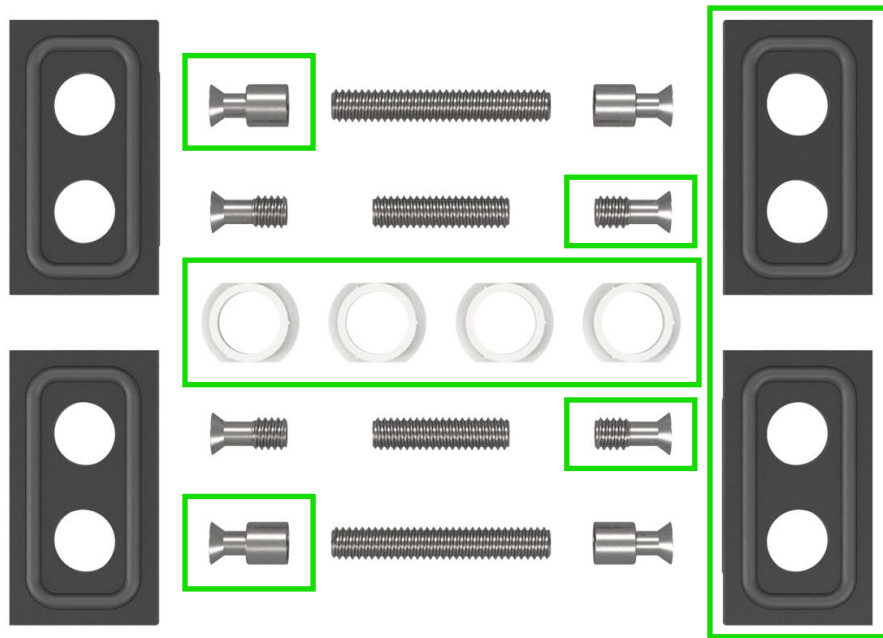
Parts necessary for door leaf **thickness of 10 mm**.

Screw the 2 small ends together.

Total rod length = 20,5 mm

Then follow the steps from page 6 and 7 to install the handles to the door leaf.





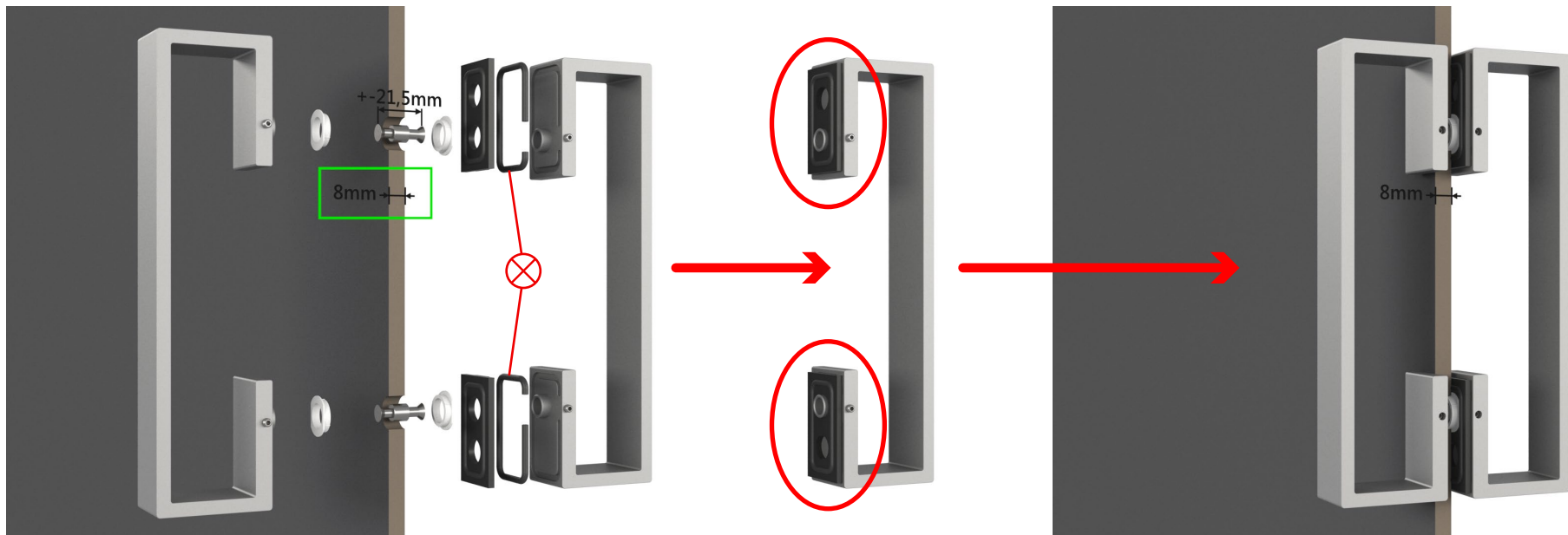
Parts necessary for door leaf **thickness of 8 mm**.

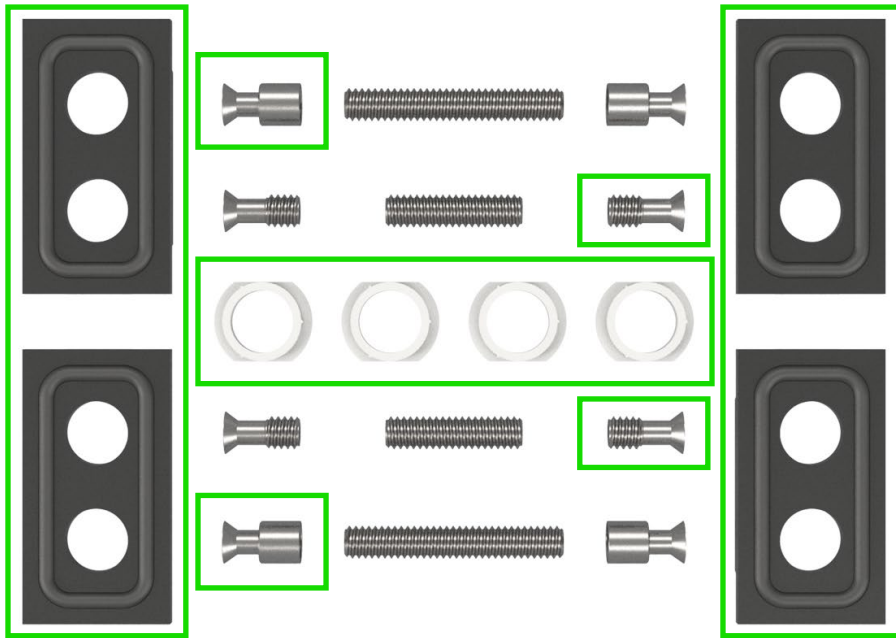
Screw the 2 small ends together.

Total rod length = 21,5 mm

Remove the rubber parts from 1 handle, and insert the aluminium spacers instead.

Then mount the nylon bushings to both handles, and follow the steps from page 6 and 7 to install the handles to the door leaf.





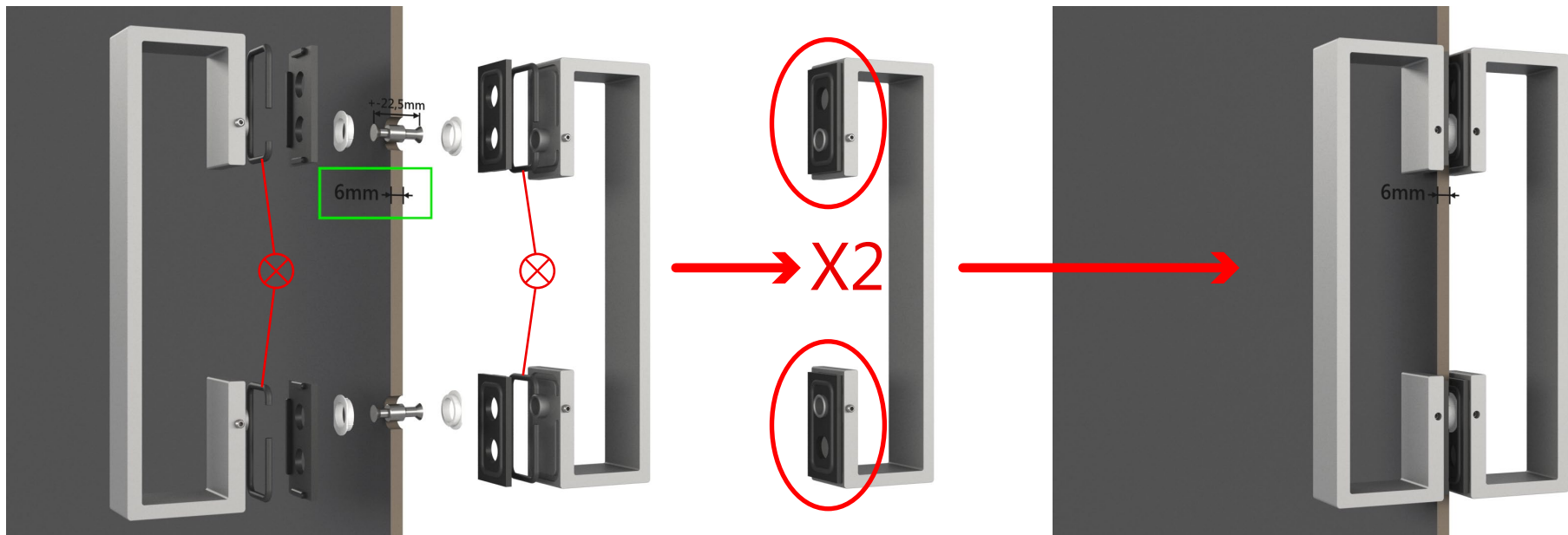
Parts necessary for door leaf **thickness of 6 mm**.

Screw the 2 small ends together.

Total rod length = 22,5 mm

Remove the rubber parts from both handles, and insert the aluminium spacers instead.

Then mount the nylon bushings to both handles, and follow the steps from page 6 and 7 to install the handles to the door leaf.



For instructions on how to install
the fully assembled door in your doorway,
please refer to the DOOR INSTALLATION MANUAL

All manuals are also available in video format on www.portapivot.com