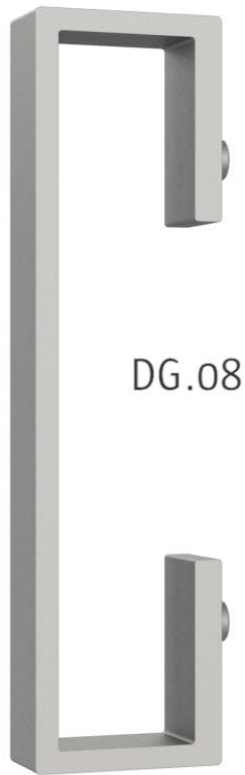


MOUNTING DOORGRIPS

DG08-09-11-12



DG.08



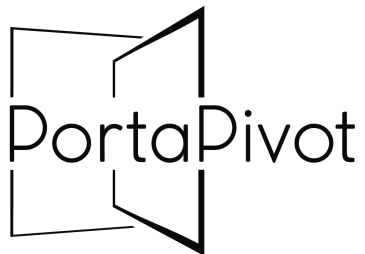
DG.09



DG.11



DG.12

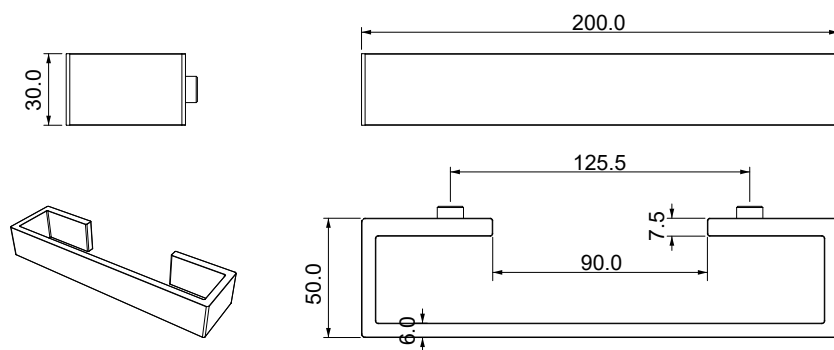


Patented technology

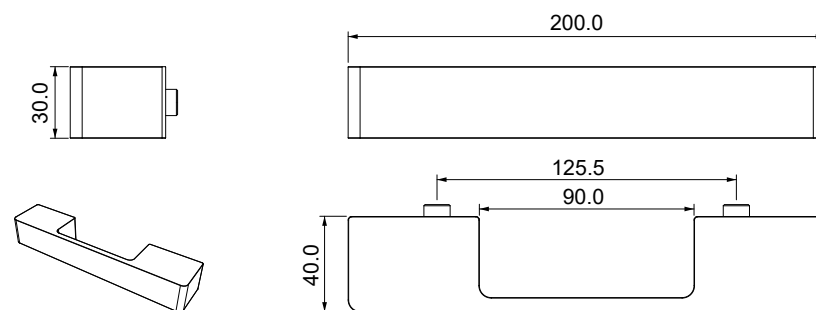
STEALTHPIVOT
By PortaPivot

Doorgrip dimensions

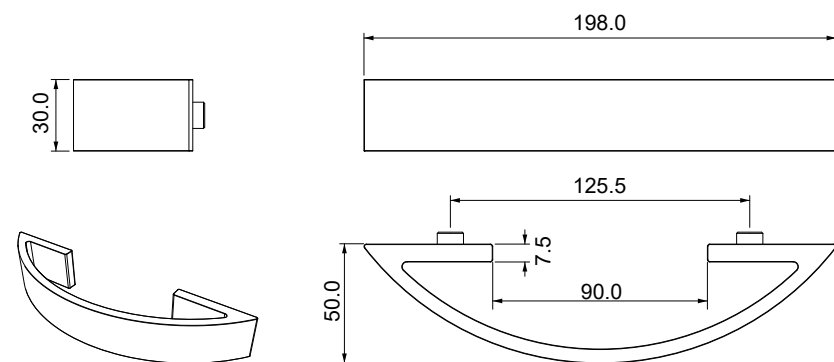
DG.08



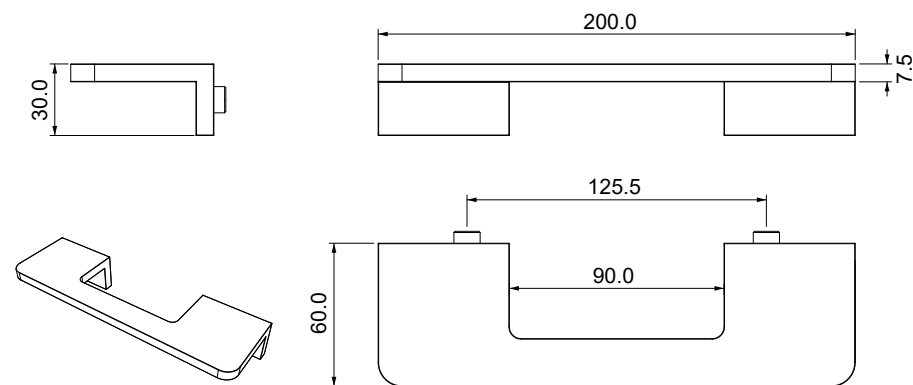
DG.11



DG.09



DG.12



Doorgrip colors

Aluminium finishing



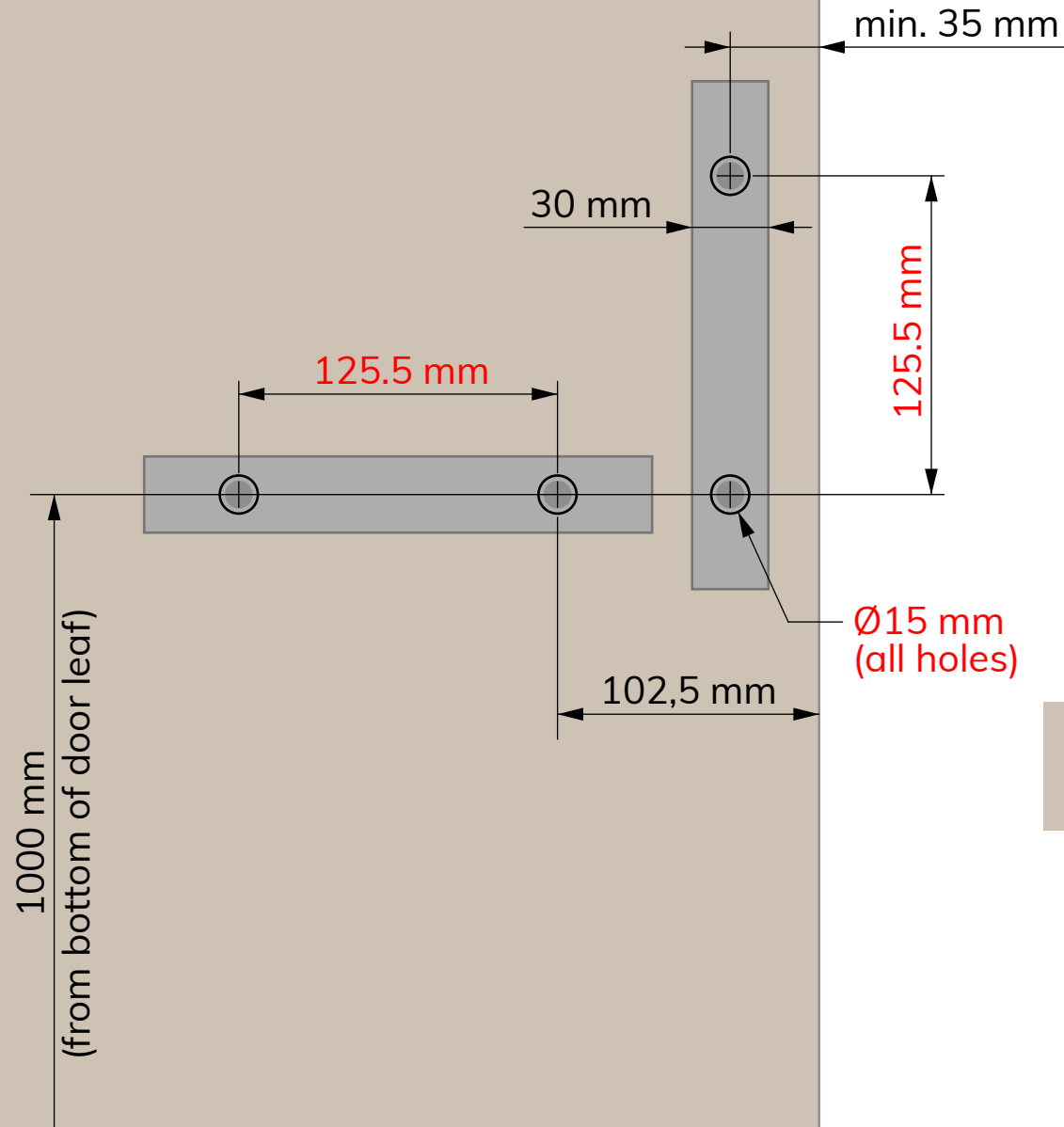
Black finishing



Bronze finishing

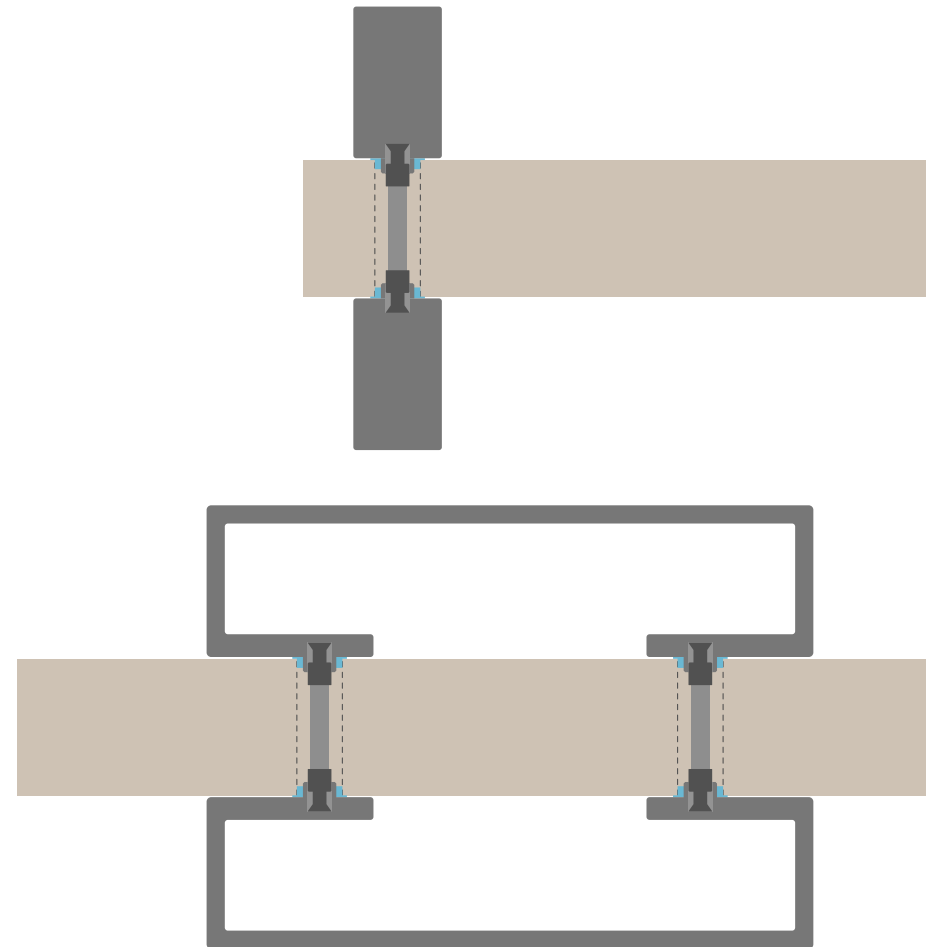


Advised doorgrip mounting locations for custom door leaf

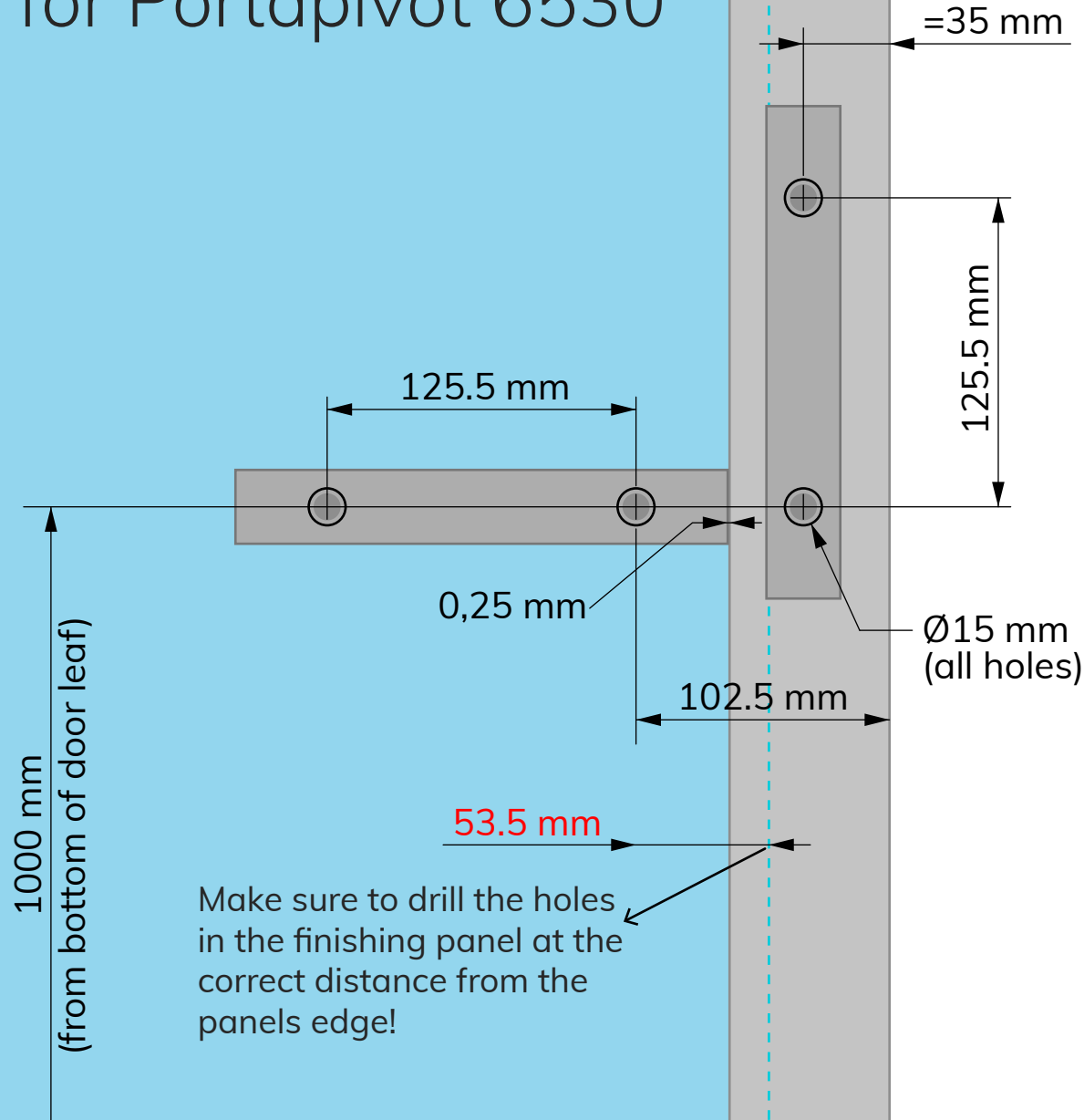


When using a custom door leaf, you can mount the door grip anywhere. We advise to mount the center of the door grip to be minimum 35 mm from the doorleafs edge.

The fixed dimensions are shown in red.



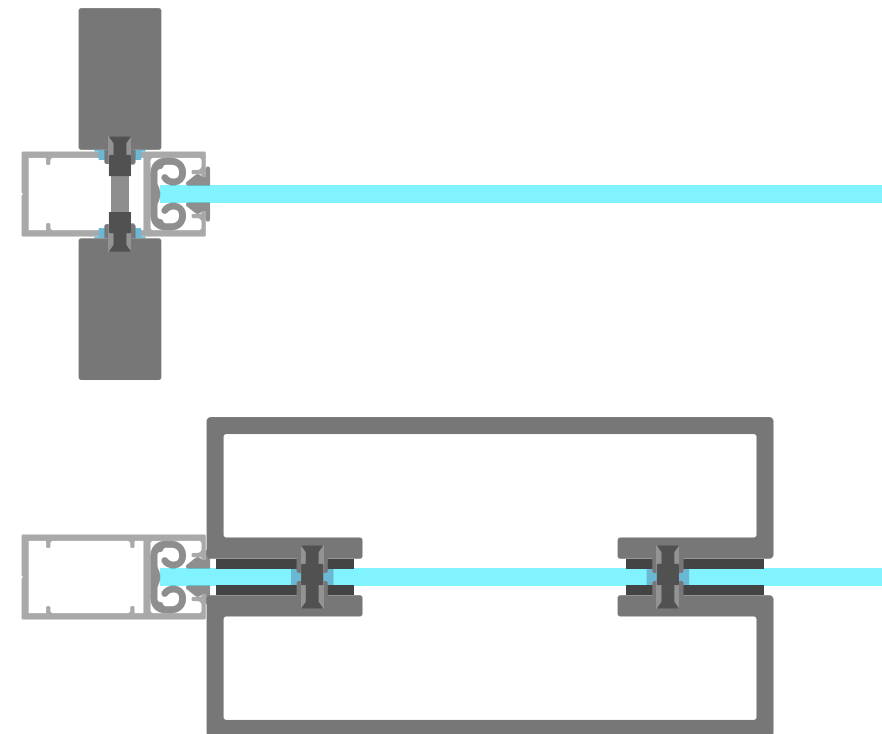
Advised doorgrip mounting locations for Portapivot 6530



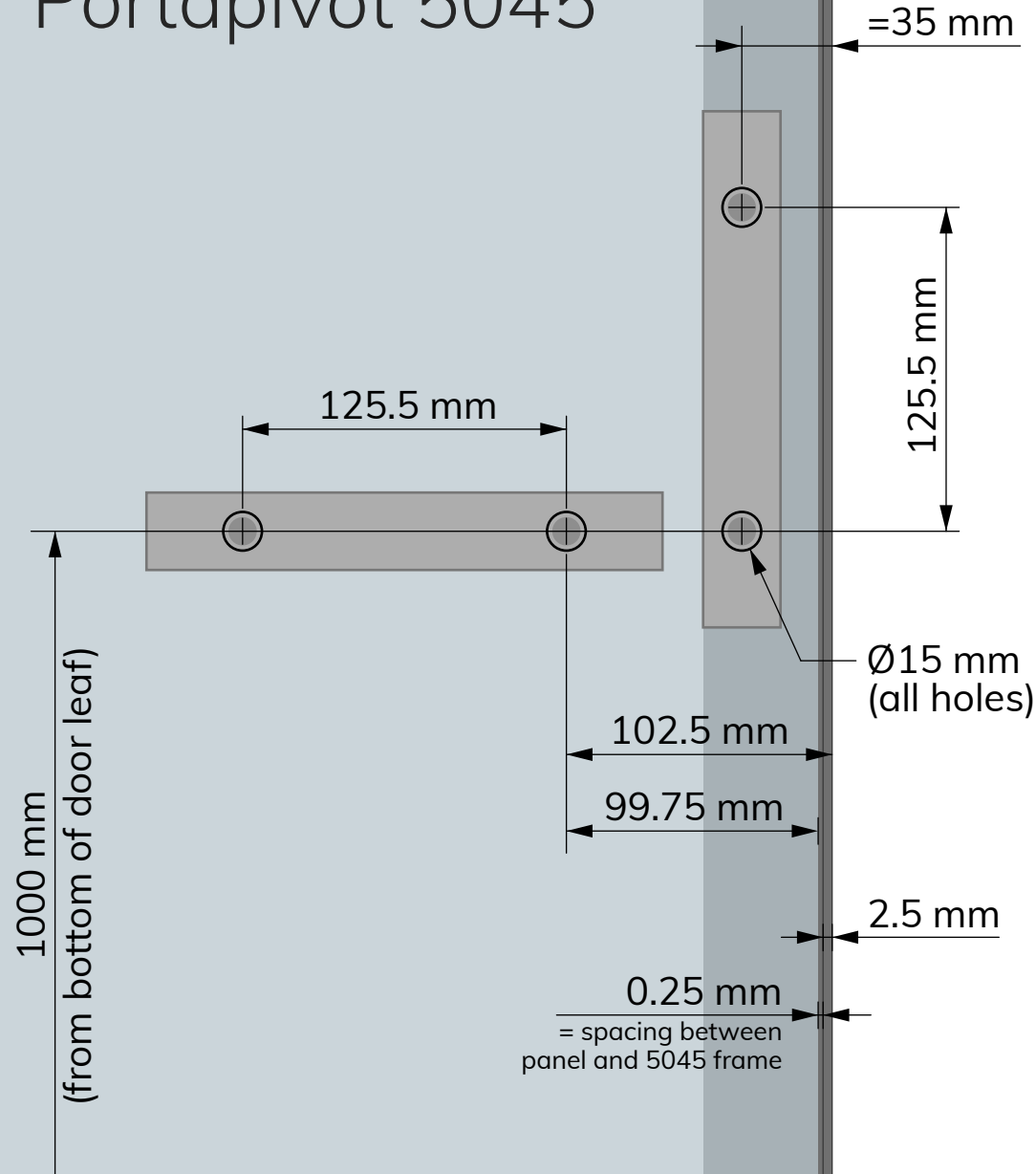
For Portapivot 6530, you can mount the doorgrip onto the frame, or on the finishing panel.

On the frame we advise to mount the center of the doorgrip 35 mm away from the edge.

On the panel you can mount the doorgrip anywhere you like. Shown is our advised setup where the door grip rests against the 6530 frame (0.25 mm margin).



Advised doorgrip mounting locations for Portapivot 5045

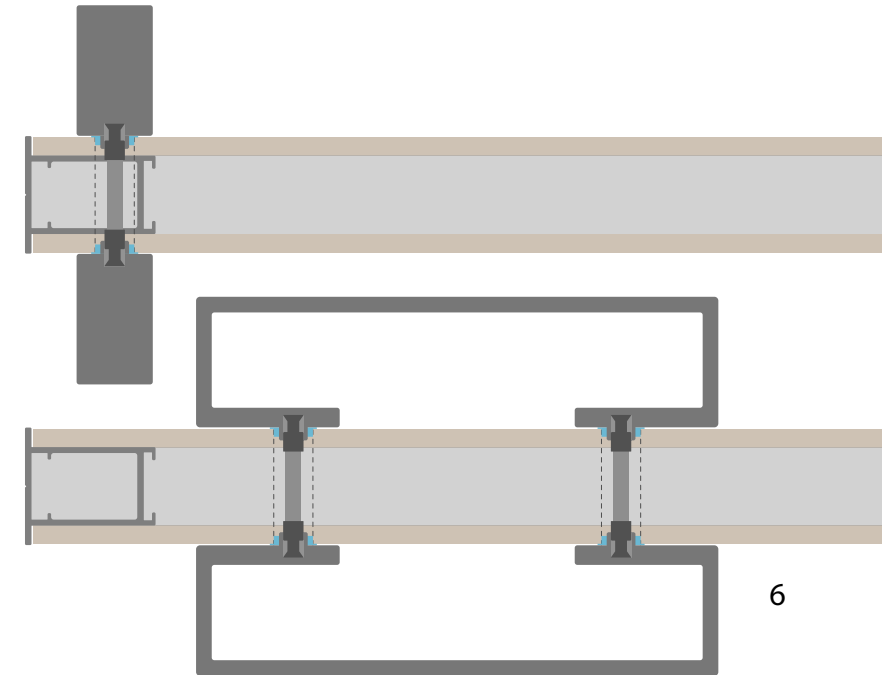


For Portapivot 5045, you can mount the doorgrip on top of the underlying frame, or on the finishing panels .

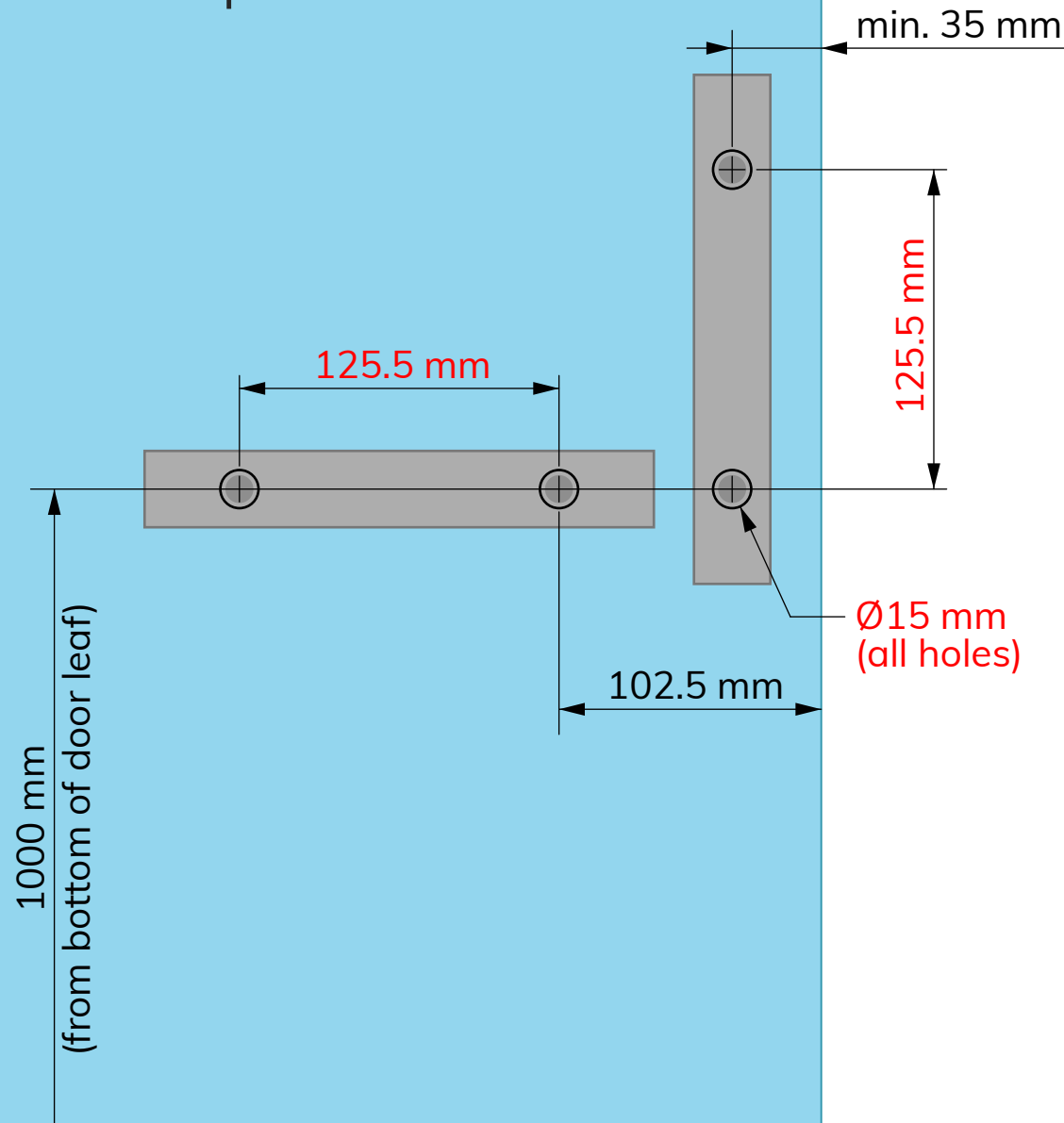
On top of the frame we advise to mount the center of the doorgrip 35 mm away from the edge.

On the panel you can mount the doorgrip anywhere you like. Shown is our advised setup.

We do not advise to mount this doorgrip when using glass as a finishing material. It is very hard to perfectly align the mounting holes in both panels and it will not be dust- or airtight!

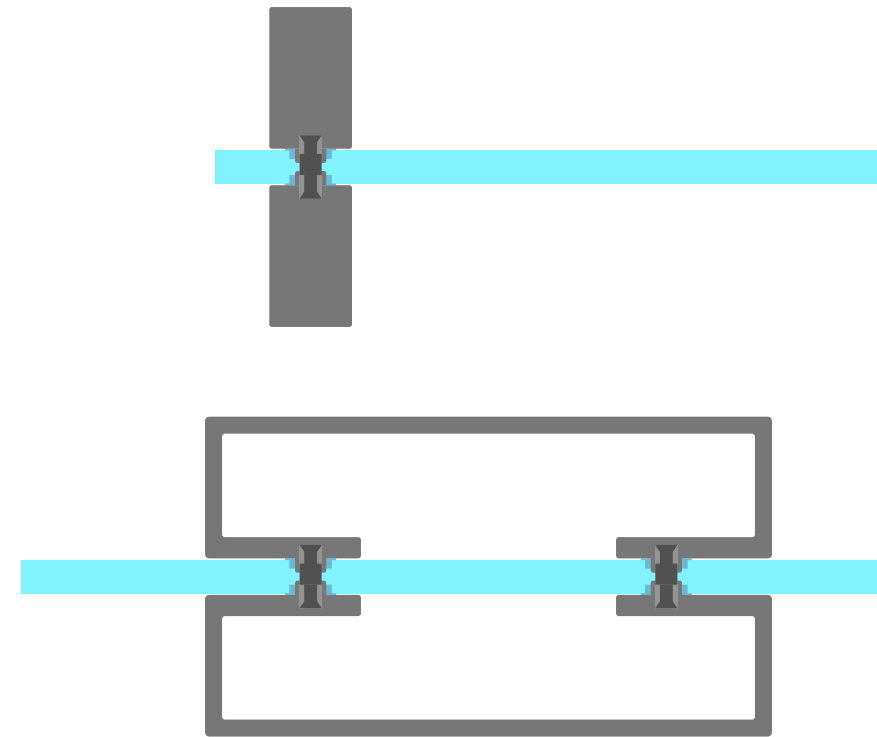


Advised doorgrip mounting locations for Portapivot Glass



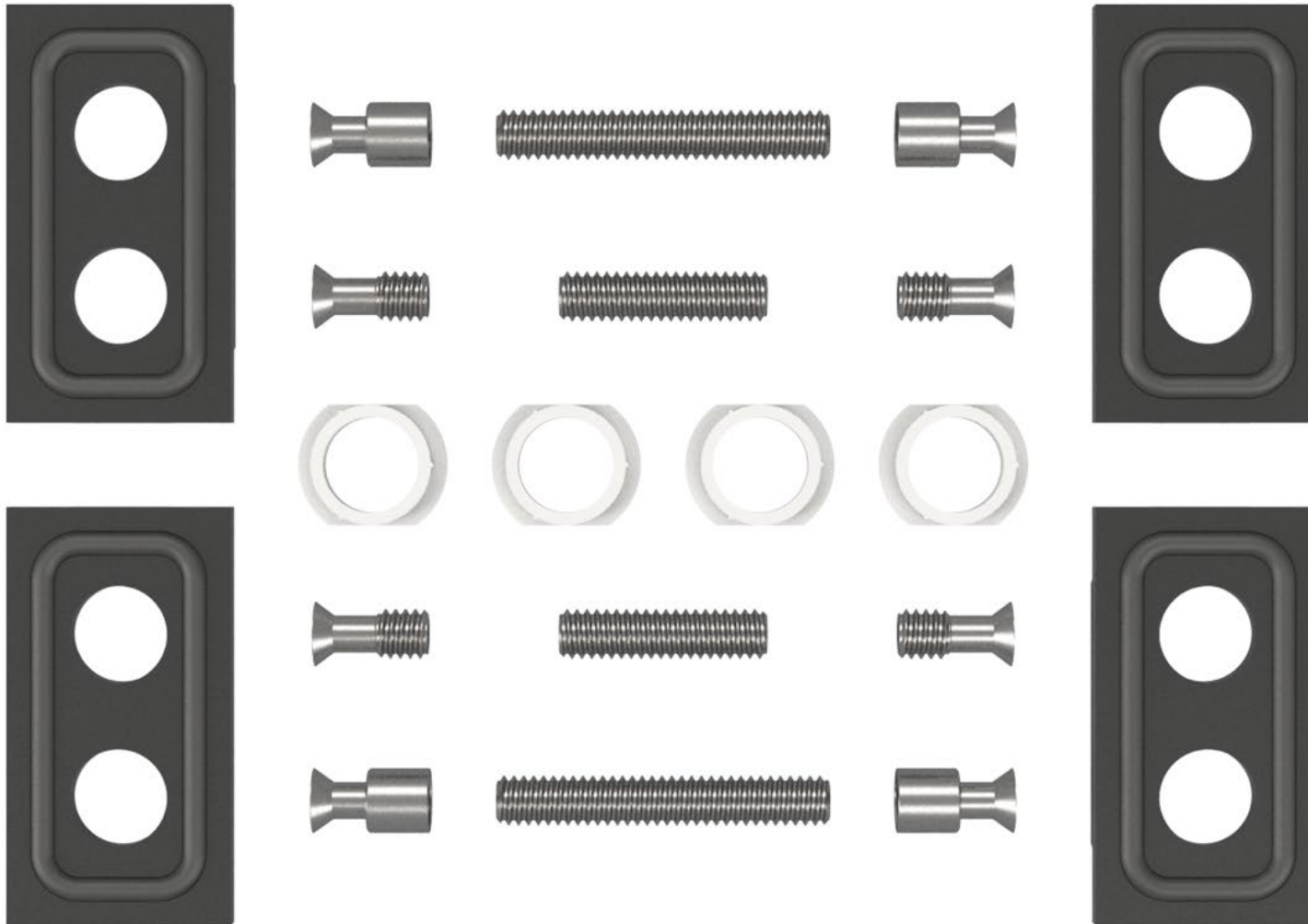
For Portapivot Glass, you can mount the door grip anywhere you like.

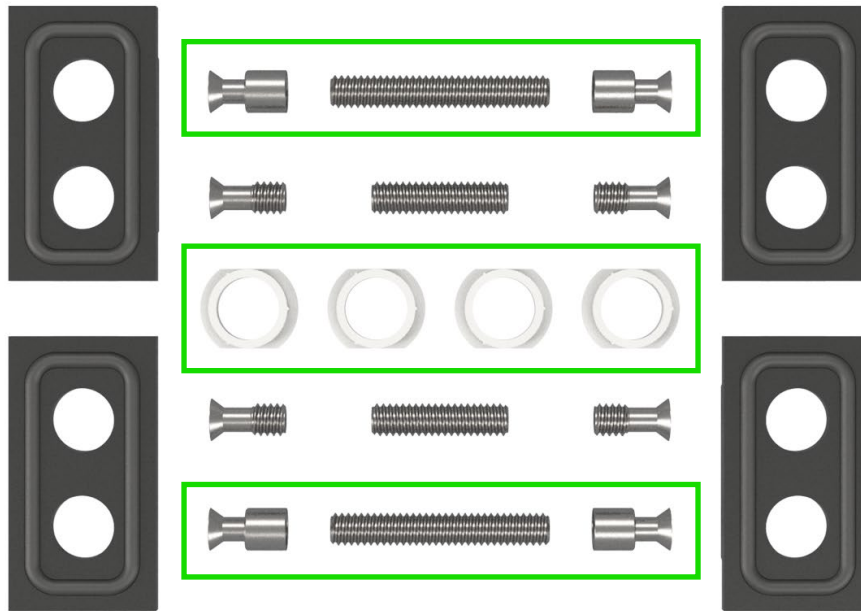
The only fixed dimensions are shown in red.



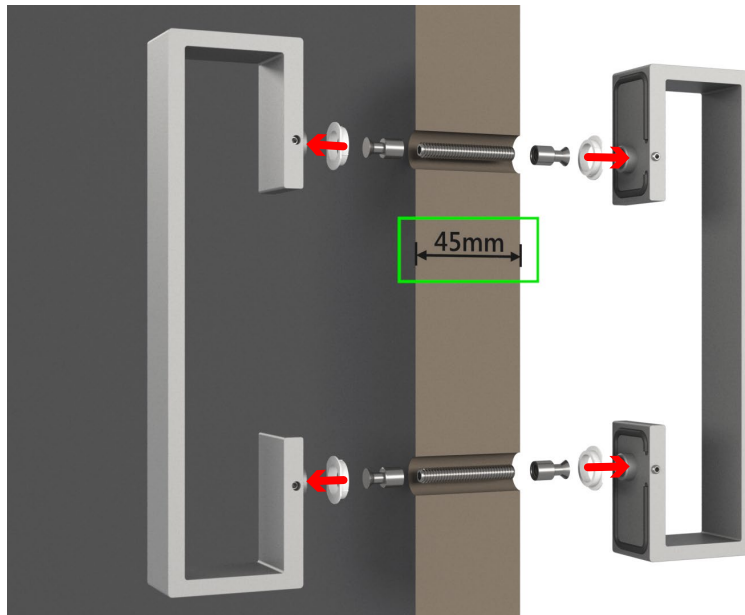
Mounting hardware

Depending on the door leaf thickness, different parts are needed.

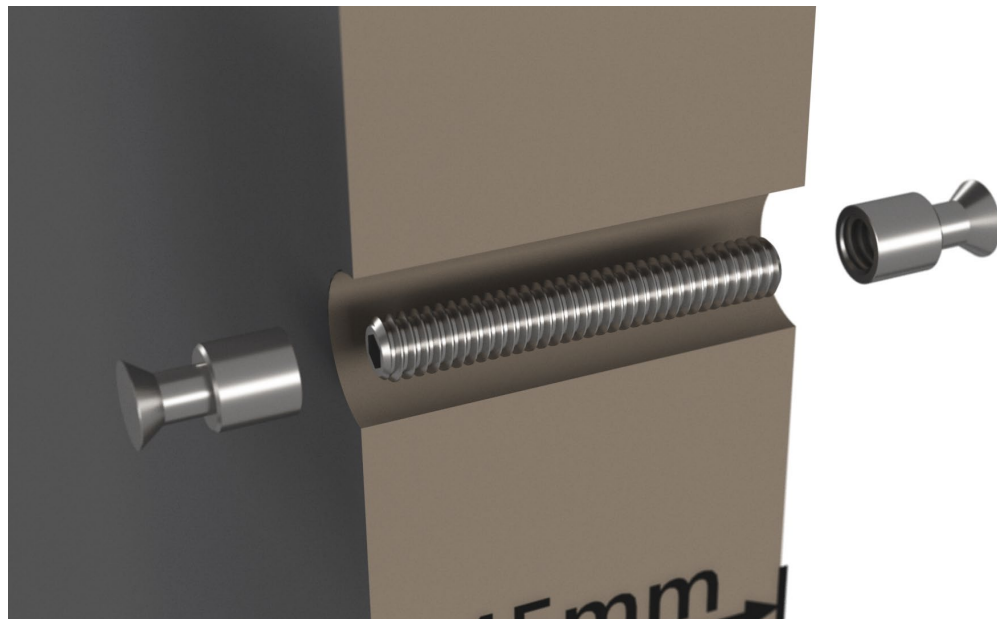




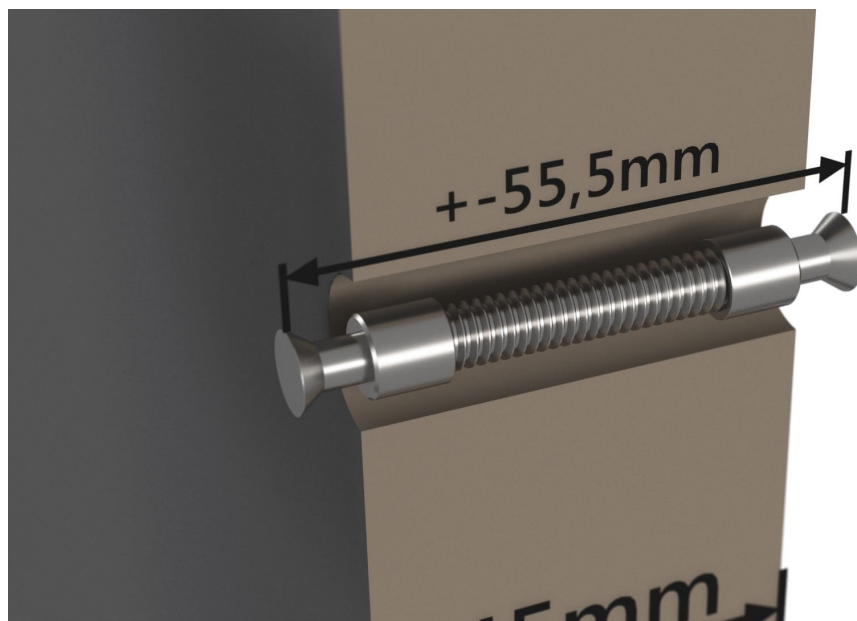
Parts necessary for door leaf
thickness from 43 tot 52 mm.



Slide the nylon bushings over the door
handles as shown.



Screw both ends to the thread.

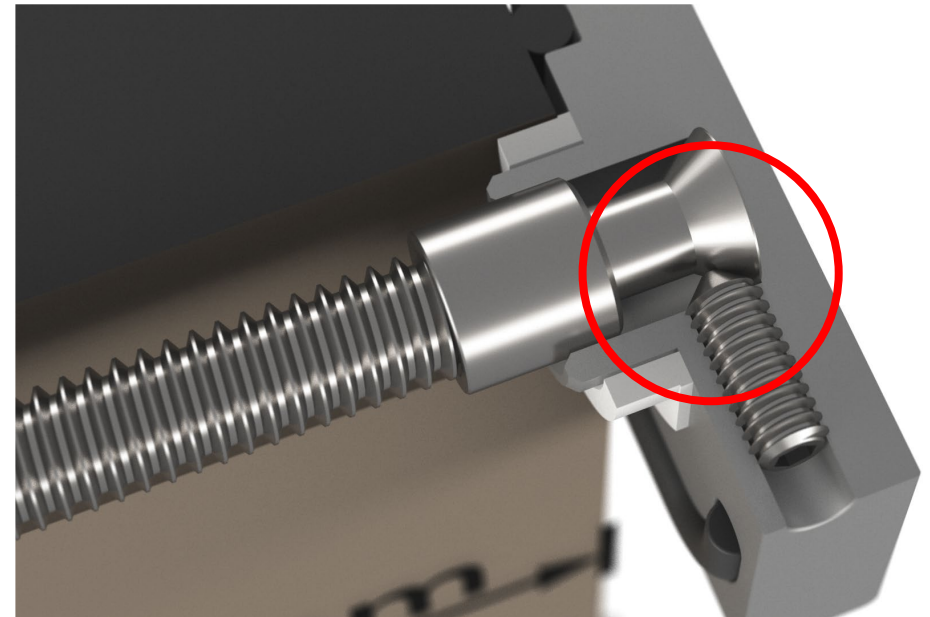
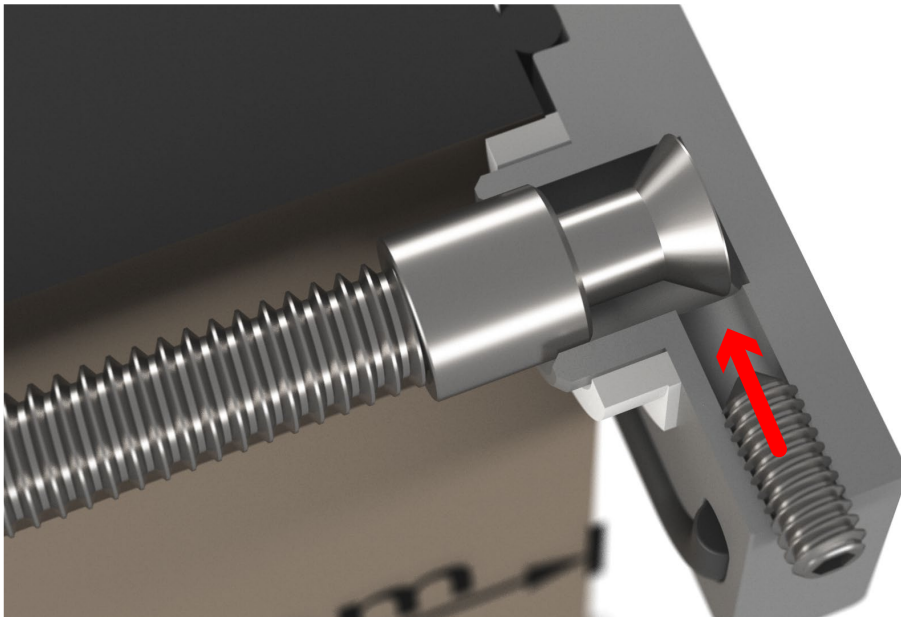


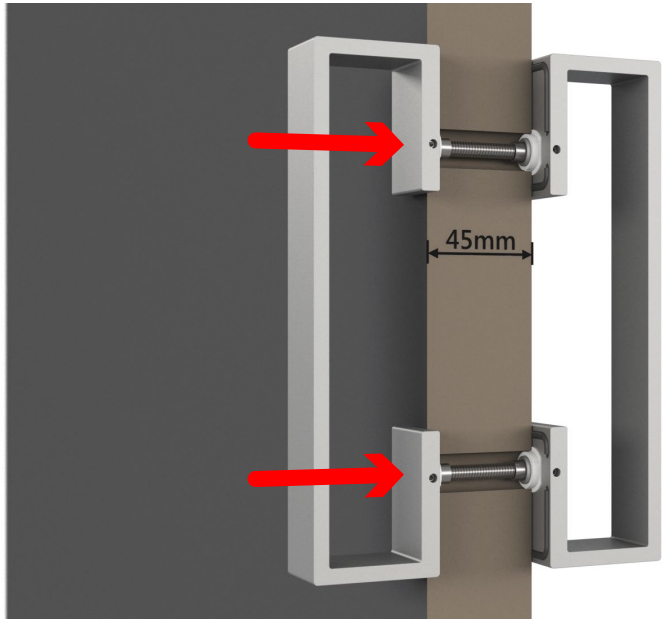
Total length = door leaf width + 10,5 mm



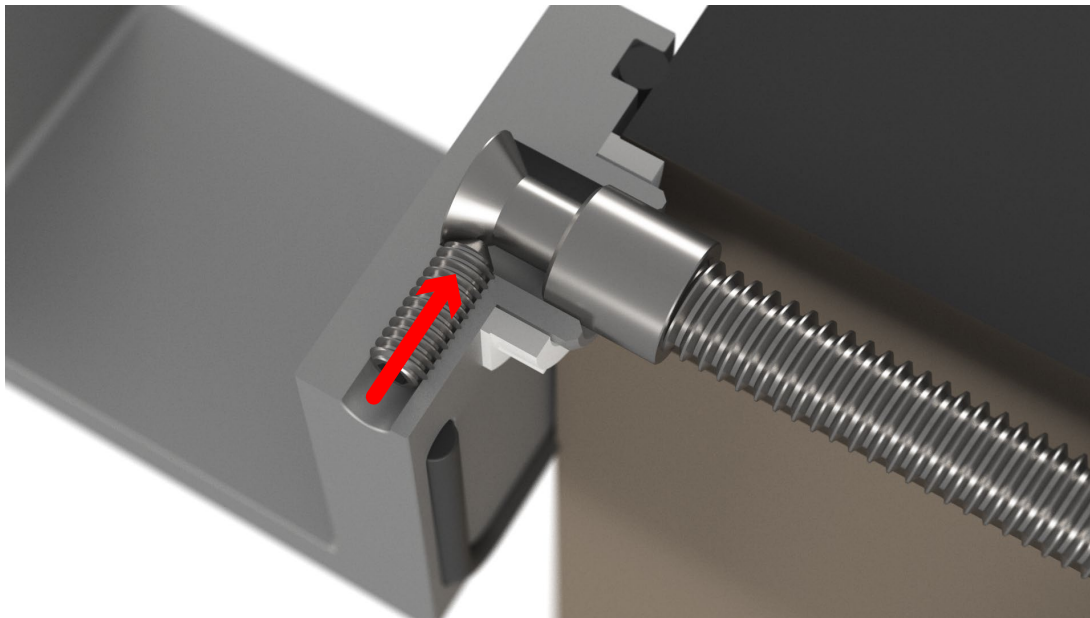
Insert the 2 rods into the handle, and tighten the 2 inbus screws.

This will pull back the rod completely in the handle.

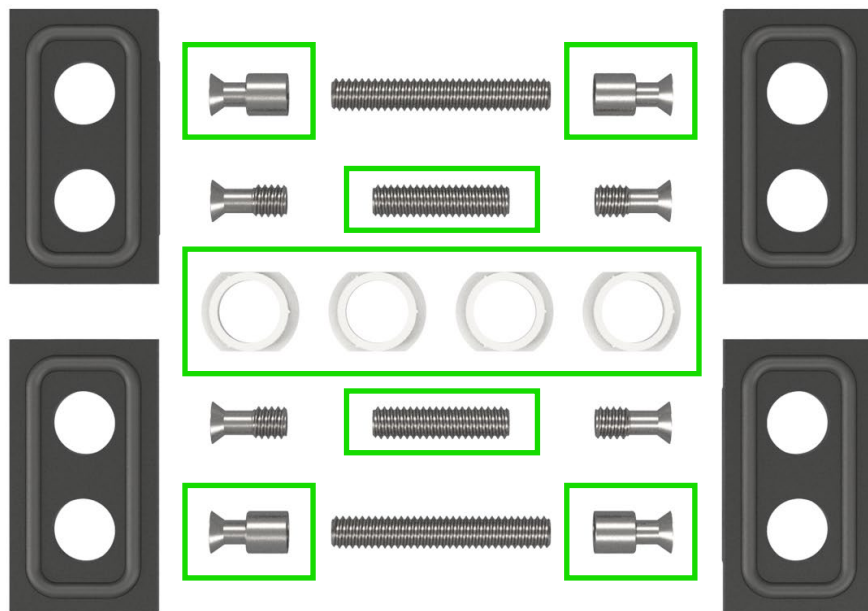




Insert the handle with its 2 rods into the door leaf, and place the other handle on the other side over the rod ends.



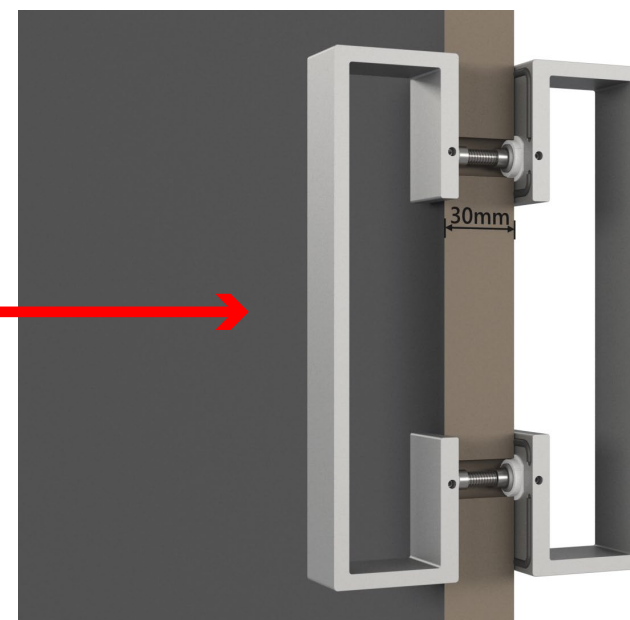
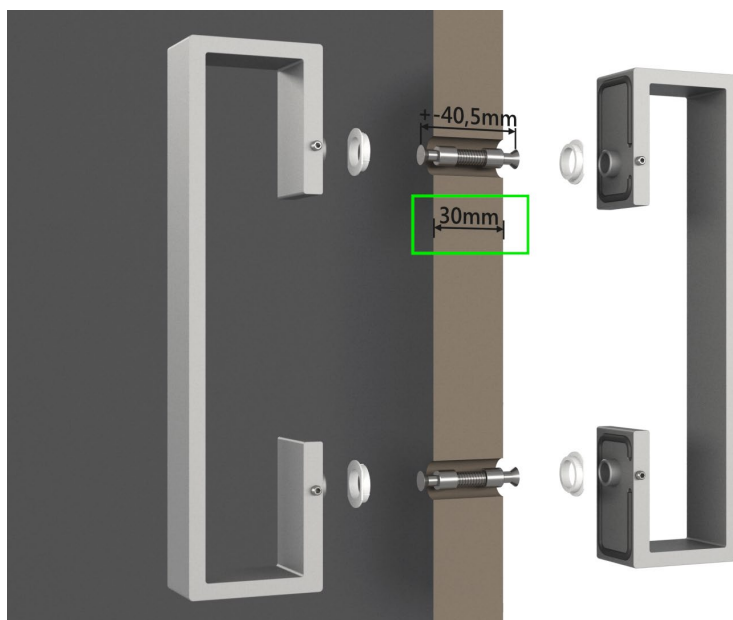
Tightening the 2 inbus screws will pull both handles closer to each other, locking them firmly onto the door leaf.

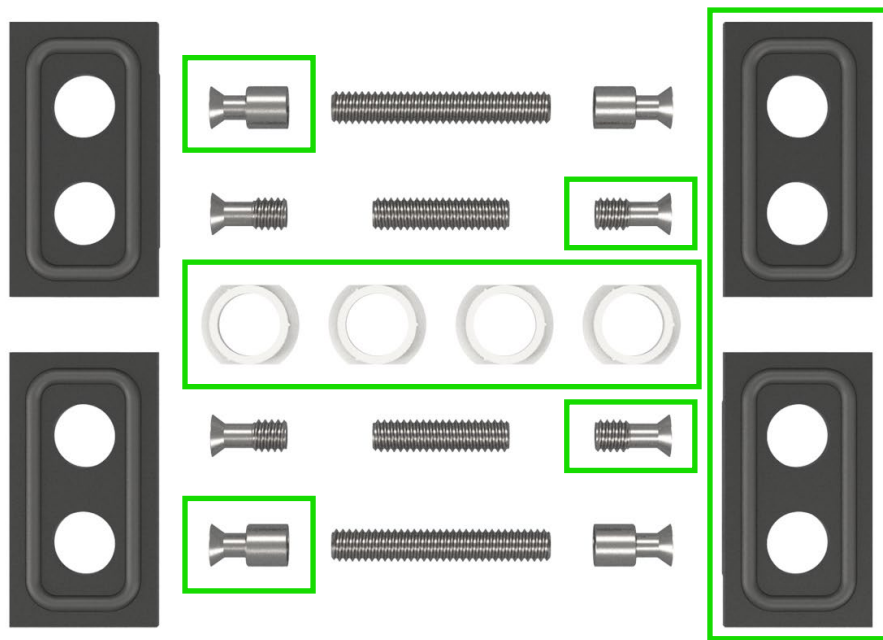


Parts necessary for door leaf
thickness from 30 tot 36 mm.

Follow the same steps from page 9 to 12,
using the short threaded rod.

Total rod length = door leaf width + 10,5 mm



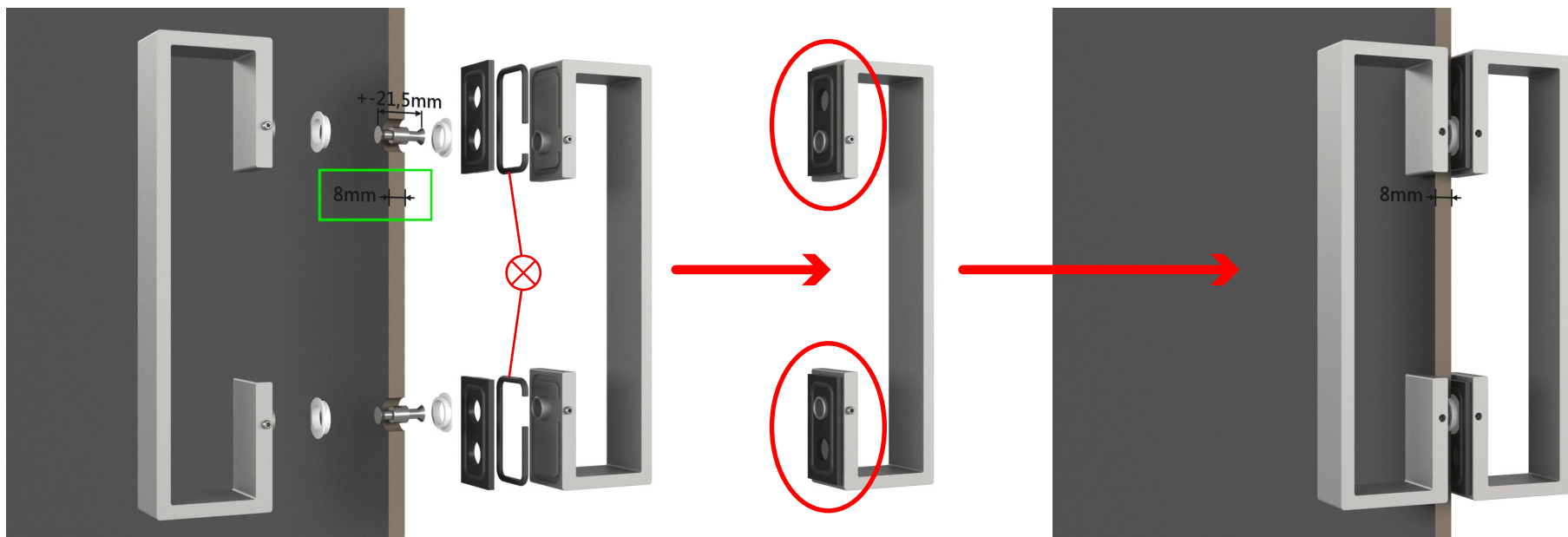


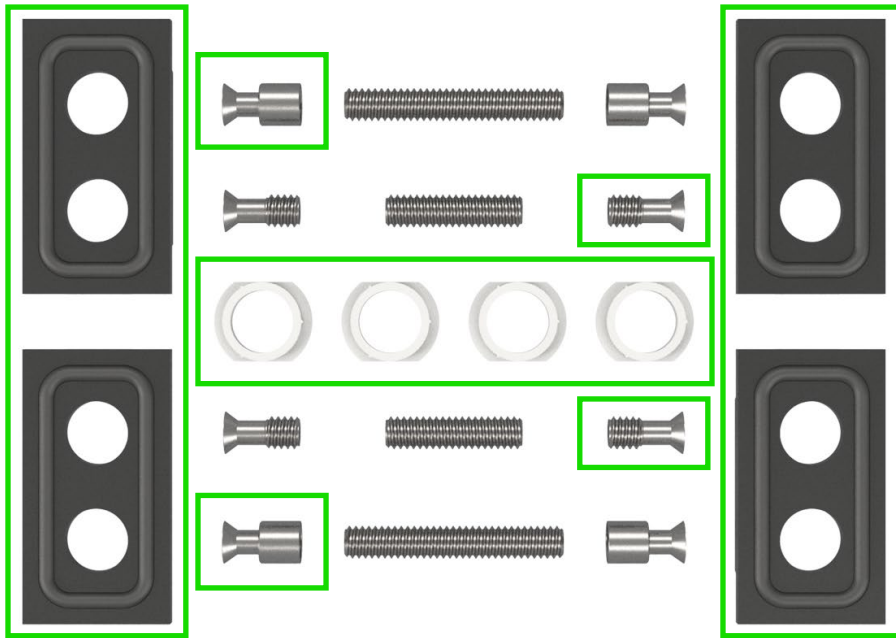
Parts necessary for door leaf **thickness of 8 mm**.

Screw the 2 small ends together.
Total rod length = 21,5 mm

Remove the rubber parts from 1 handle, and
insert the aluminium spacers instead.

Then mount the nylon bushings to both handles,
and follow the steps from page 11 and 12 to
install the handles to the door leaf.





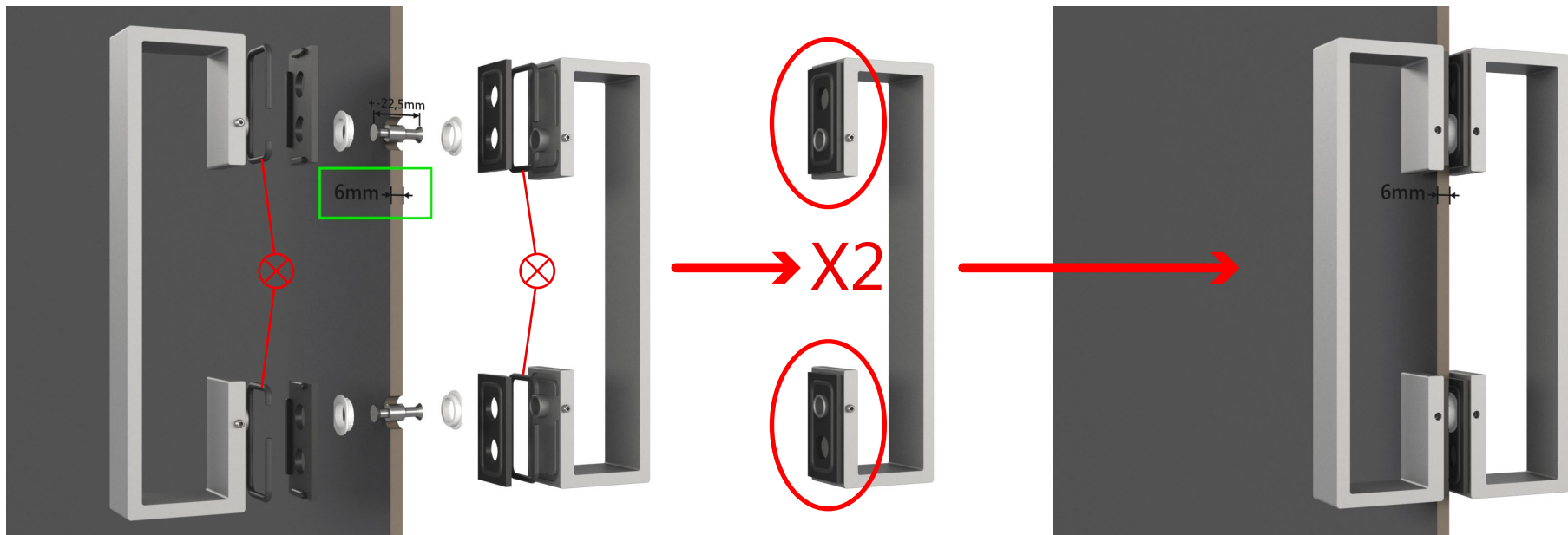
Parts necessary for door leaf **thickness of 6 mm**.

Screw the 2 small ends together.

Total rod length = 22,5 mm

Remove the rubber parts from both handles, and insert the aluminium spacers instead.

Then mount the nylon bushings to both handles, and follow the steps from page 11 and 12 to install the handles to the door leaf.



For instructions on how to install
the fully assembled door in your doorway,
please refer to the DOOR INSTALLATION MANUAL