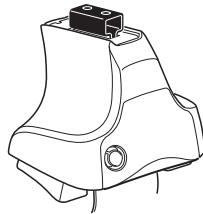


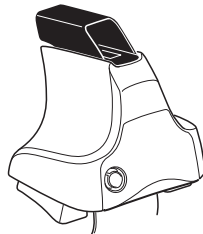
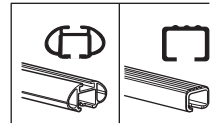
Kit 1440

TOYOTA Auris, 5-dr Hatchback, 06-12

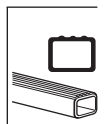
TOYOTA Corolla, 5-dr Hatchback, 06-12 (Australia)



754 Rapid System
480R Rapid Traverse (North America)



480 Traverse (North America)



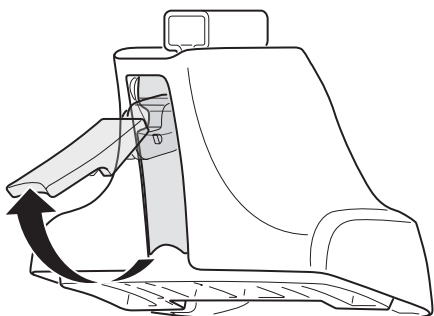
754 Rapid System
480R Rapid Traverse (North America)

480 Traverse (North America)

(North America)

727 x 2
1215 x 2
266 x 2
267 x 2
x 1

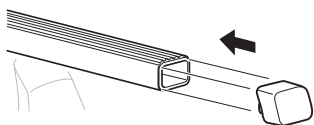
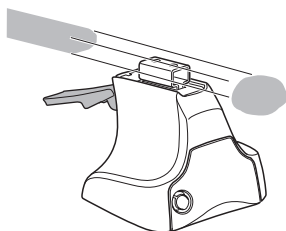
1



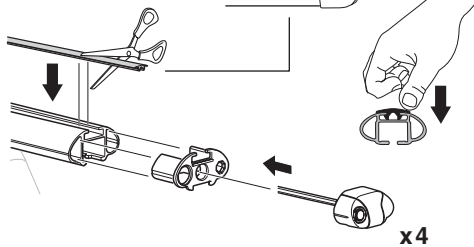
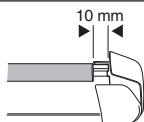
2



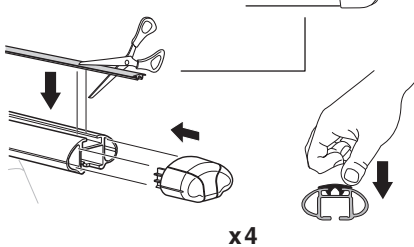
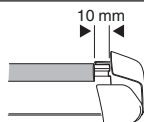
754 Rapid System
480R Rapid Traverse
(North America)



x4



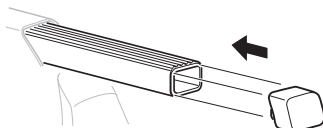
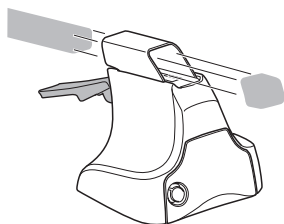
x4



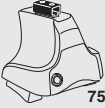
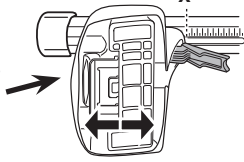
x4



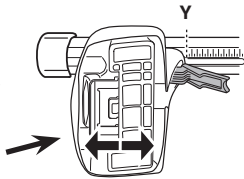
480 Traverse
(North America)



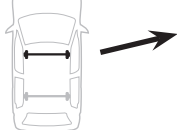
x4

3**754** Rapid System

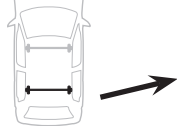
	X
TOYOTA Auris , 5-dr Hatchback, 06-12	36,5
TOYOTA Corolla , 5-dr Hatchback, 06-12 (Australia)	36,5



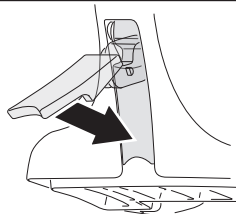
	Y
TOYOTA Auris , 5-dr Hatchback, 06-12	34
TOYOTA Corolla , 5-dr Hatchback, 06-12 (Australia)	34

3**480R** Rapid Traverse**480** Traverse**(North America)**

	X inch	X mm
TOYOTA Auris , 5-dr Hatchback, 06-12	40"	1016 mm
TOYOTA Corolla , 5-dr Hatchback, 06-12 (Australia)	40"	1016 mm

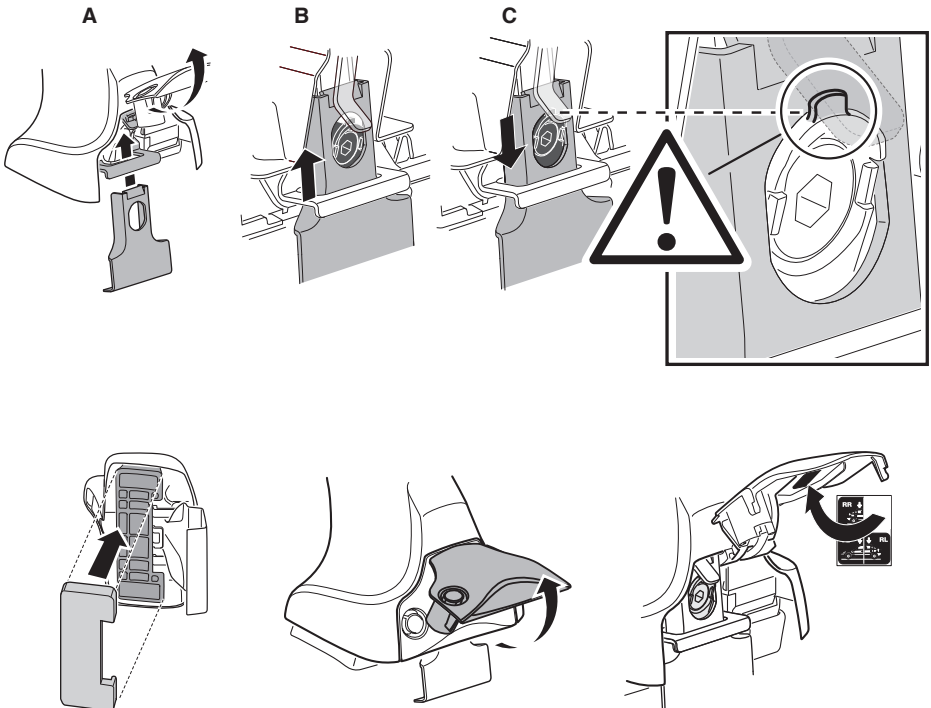
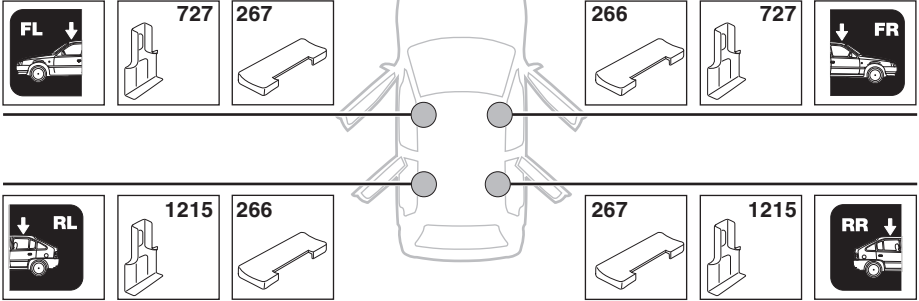


	Y inch	Y mm
TOYOTA Auris , 5-dr Hatchback, 06-12	39"	991 mm
TOYOTA Corolla , 5-dr Hatchback, 06-12 (Australia)	39"	991 mm

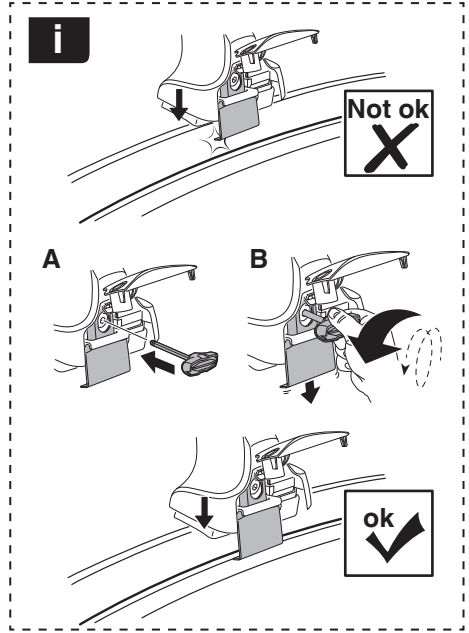
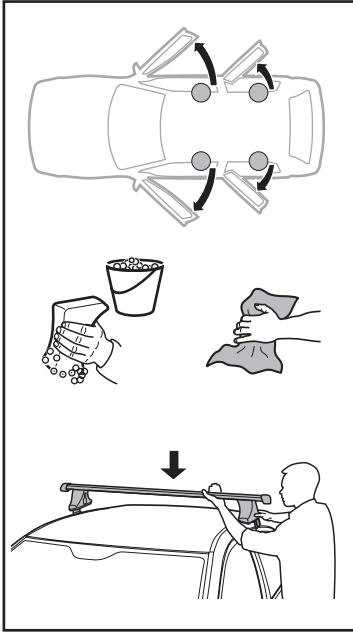
4

5

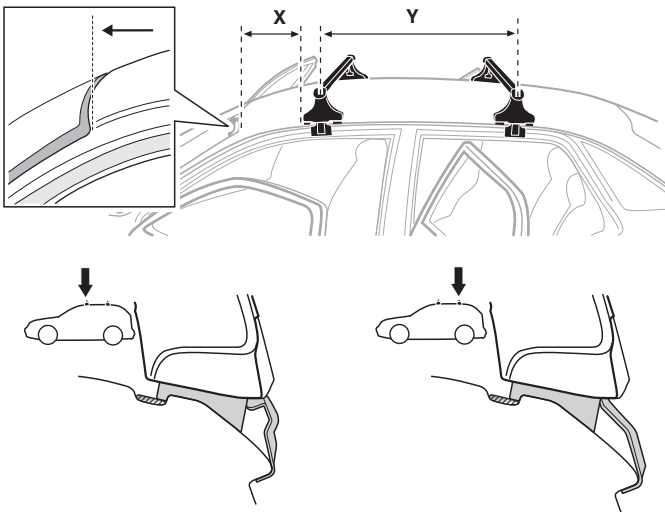
TOYOTA Auris, 5-dr Hatchback, 06-12
TOYOTA Corolla, 5-dr Hatchback, 06-12 (Australia)



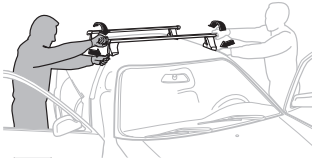
6



	X mm	Y mm	X inch	Y inch
TOYOTA Auris, 5-dr Hatchback, 06-12	320 mm	710 mm	12 5/8"	28"
TOYOTA Corolla, 5-dr Hatchback, 06-12 (Australia)	320 mm	710 mm	12 5/8"	28"



7



GB/US	Tighten alternately
D	Die Schrauben abwechselnd anziehen
F	Serrer alternativement chaque côté
NL	Afwisselend aan de linker- en de rechterkant aandraaien
I	Alternare il serraggio delle viti
E	Apretar alternativamente
PT	Aperte alternadamente
S	Dra åt växelvis
FIN	Kierrä vuorotellen
EST	Pinguldage vaheldumisi
LAT	Pielveiciet pamišus
LIT	Užsukinėkite pakaitomis
PL	Śruby dokręcaj naprzemiennie
RU	Затягивайте попеременно

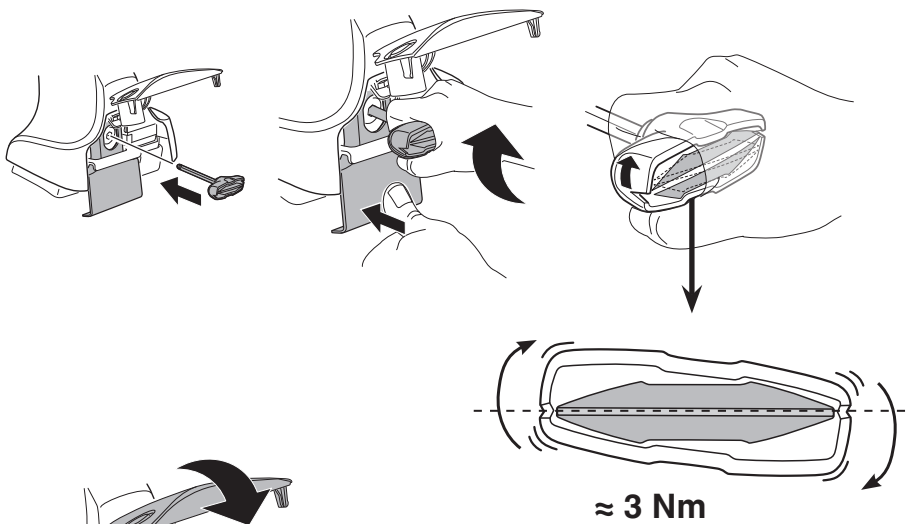
CZ	Pokręřta багаžníka dokręřcaj dokręřcaj naprzemiennie.
SK	Dofahajte striedavo
SLO	Privijajte izmenično.
HR	Naizmjениčno zategnite
HU	Egymástól függetlenül szorítandó
GR	Σφιγγείτε εναλλάξ
TR	Dönüşümlü sıkın

中文 交替拧紧

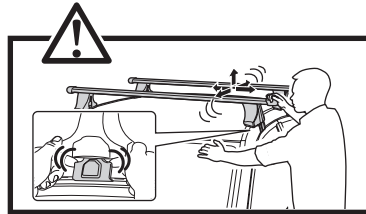
한국어 번갈아 가며 조이십시오.

日本語 交互に締め付けてください。

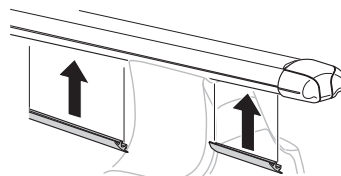
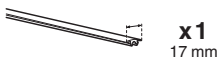
ไทย ชันในแบบสลับ

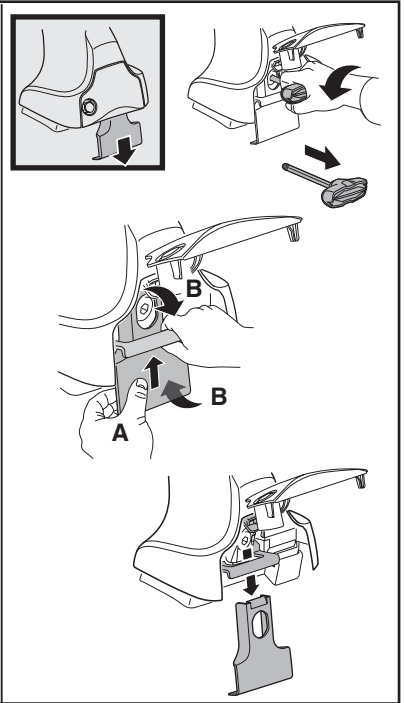
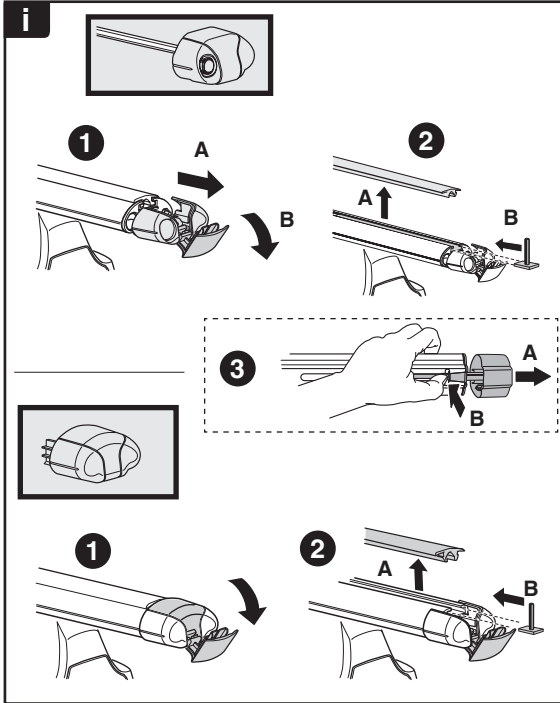
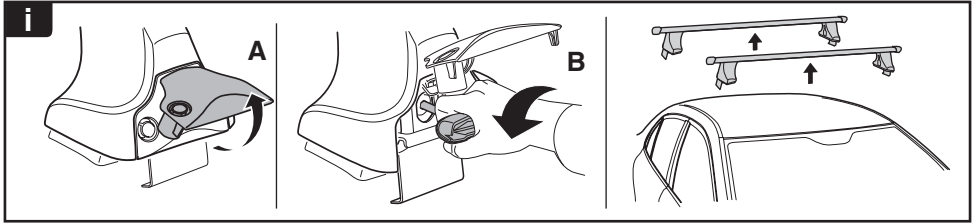


≈ 3 Nm



8





THULE
SWEDEN
**ONE
KEY
SYSTEM**



		(x4)
		(x6)
		(x8)
NA		(x10)
EUR		(x12)
ASIA		



WW ▶ Thule Sweden AB, Box 69, 330 33 Hillerstorp, SWEDEN
NA ▶ Thule Inc., 42 Silvermine Road, Seymour, Connecticut 06483, USA

info@thule.com
customer.service@thule.com

www.thule.com