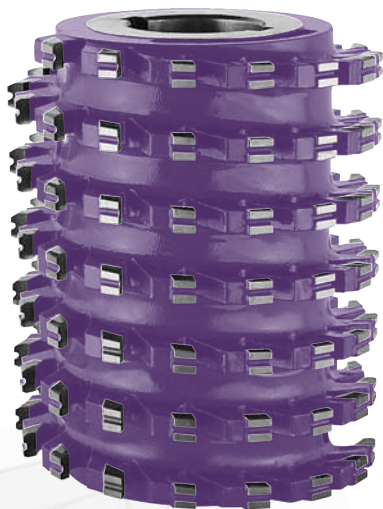


# FRESE ELICOIDALI MULTITAGLIENTI PLACCHETTE SCANALATE 0250

## MULTICUT SPIRAL CUTTERS CHIP-BREAKER TIPS

2



Z=16 / Hc			
D ▶	100	120	140
B ▼	Cod.	Cod.	Cod.
60	001	002	003
80	004	005	006
110	007	008	009
120	010	011	012
170	013	014	015
180	016	017	018

B = spessore in mm. - cutting height in mm. D = diametro in mm. - diameter in mm.  
Z = numero dei taglienti - number of cutting edges

- DISPONIBILI IN MAGAZZINO
- READY ON STOCK

### CARATTERISTICHE TECNICHE

Fresa a 16 taglienti in Hc (HM riportato) frazionati, posizionati su sedi ad andamento spiridale. Esecuzione con placchette scanalate applicate su un unico principio elicoidale. Particolarmente adatta per lavorazioni con **forti avanzamenti, media finitura, grande asportazione** e totale assenza di scheggiature, anche in controvena. Adatto per legni teneri, duri e incollati.

### IMPIEGO

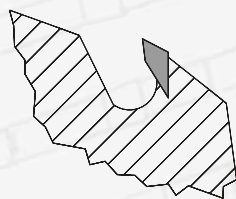
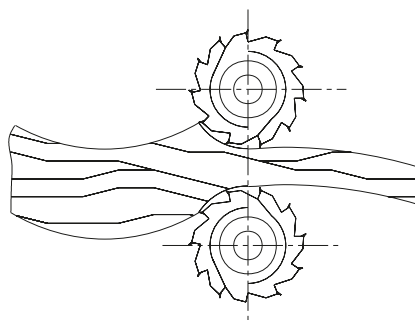
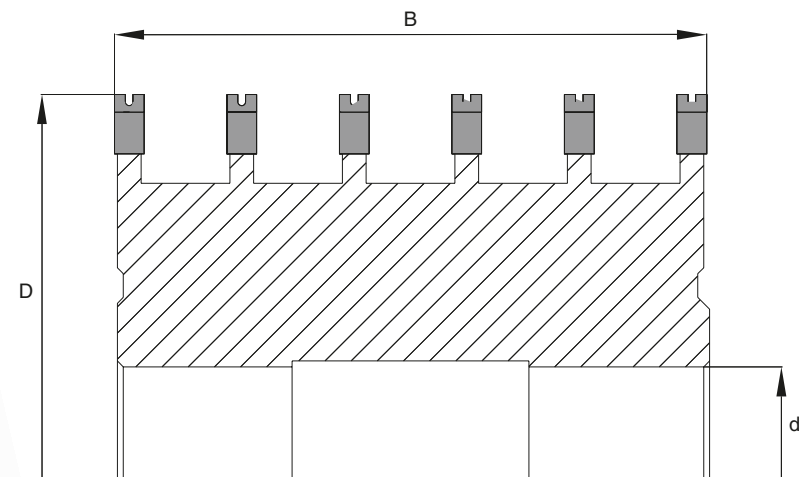
CONTORNATRICE

### TECHNICAL SPECIFICATIONS

Cutter with n.16 fractioned cutting wings in Hc (brazed tungsten carbide), positioned on a spiral design. Execution with chip-breaker tips placed on one starting helix only. Recommended for **high feed speed, great removal, medium finishing**, avoiding chippings, even in against wood grain working. Suitable on soft, hard woods and glued panels.

### APPLICATION

COPY-SHAPING



-60%



RUMOROSITA'  
NOISE

-50%



ENERGIA  
ENERGY

+250%



VELOCITA' DI  
AVANZAMENTO  
ADVANCING  
SPEED

+80%



FRAZIONAMENTO  
DEL TRUCIOLO  
FRACTIONATION  
OF THE CHIP

-70%



MANUTENZIONE  
MAINTENANCE