

0801 GRUPPI PROGRAMMATI PER FINESTRE (VERSIONE SOLO LEGNO)

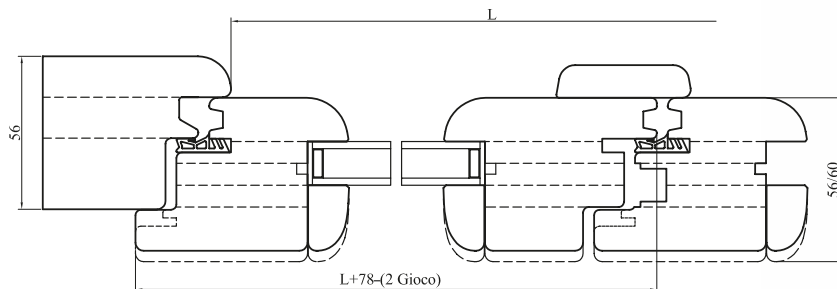
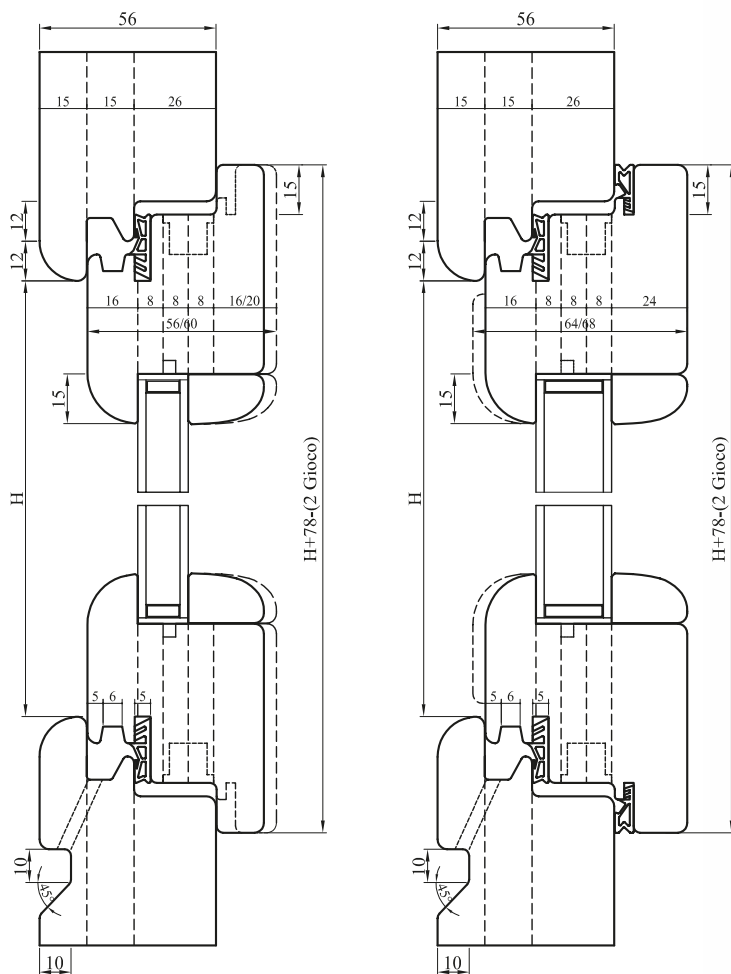
PROGRAMMED TOOLS FOR WINDOWS (WOOD VERSION ONLY)

VERSIONE ARIA 4 - OPEN 4 VERSION

SPESSORE TELAIO 58 / FRAME THICKNESS 58

SPESSORE ANTA 56 - 60 - 64 - 68 / WING THICKNESS 56 - 60 - 64 - 68

SEZIONE VERTICALE LEGNO 56 / 60 / 64 / 68
VERTICAL WOOD SECTION 56 / 60 / 64 / 68



SEZIONE ORIZZONTALE LEGNO 56 / 60 / 64 / 68
HORIZONTAL WOOD SECTION 56 / 60 / 64 / 68

CARATTERISTICHE TECNICHE

- Gruppi programmati a coltellini in HW (HM integrale) con spine standard.
- GUARNIZIONE TERMICA ED ACUSTICA SUL TELAIO O SULLE ANTE
 - MASSIMO TRE GUARNIZIONI
 - POSSIBILITA' DELL'ANTA RIBALTA
 - SPIGOLI ESTERNI RAGGIATI R=3 E INTERNI SPIGOLATI 45°
 - AUMENTO ESTERNO ED INTERNO DEL PROFILO VETRO
 - TENONCINO DI RINFORZO NELLA TENONATURA DELL'ANTA
 - CANALE DI AERAZIONE E SCARICO CONDENZA
 - POSSIBILITA' DI FERRAMENTA NASCOSTA

IMPIEGO

TOUPIE, CENTRO DI LAVORO PER FINESTRE

TECHNICAL SPECIFICATIONS

- Programmed tools with HW (integral tungsten carbide) inserts, standard pins.
- THERMIC AND ACOUSTIC GASKET ON FRAMES OR WINGS
 - MAXIMUM THREE GASKETS
 - POSSIBILITY OF FOLDING WING
 - OUTSIDE BEVELLED ANGLES R=3 AND INSIDE BEVELLED ANGLES 45°
 - INSIDE /OUTSIDE INCREASE OF GLASS PROFILE
 - STRENGTHENING TENON IN WING TENONING
 - CONDENSATE RELEASE AND AERATION GROOVE
 - OPTIONAL METAL - FITTING HIDEAWAY

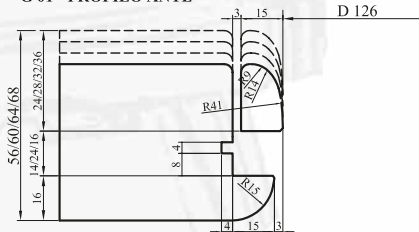
APPLICATION

SPINDLE MOULDER, WINDOW FRAME MACHINE CENTER

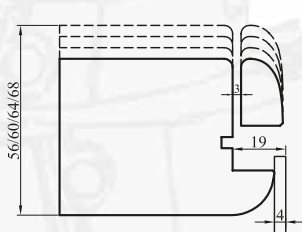
Cod.	D	Z	Descrizione - Description
001	126	2	profilatura interno anta - inside wing profiling
002	200	24	recupero del listello fermavetro - glass fixing lath regaining
003	126	2	squadratura anta - wing squaring
004	126	2	squadratura montante centrale sx - squaring of central left wing jamb
005	126	2+2	esecuzione sede ferramenta - metal fittings seat execution
006	290	4	tenonatura montanti telaio - frame of jamb (upper part) tenoning
007	290	4	tenonatura traversi telaio - tenoning of frame cross pieces
008	126	2	profilo montanti e traversi telaio - profiling of crosspieces and wing jambs
009	290	4	tenonatura montanti anta - tenoning of wing jamb
010	290	4	tenonatura traversi anta - tenoning of wing cross pieces
Cod.	TOTALE GRUPPO - TOTAL GROUP		
020	VERSIONE SOLO LEGNO - WOOD VERSION ONLY		

VARIANTE PORTA BALCONE - DOOR-BALCONY VARIANT			
Cod.	D	Z	Descrizione - Description
030	290	4	tenonatura montanti inferiori telaio per traverso in alluminio a norme din tenoning of lower frame jamb for aluminium crosspiece - din norms
031	126	2	profilatura traversi aggiunti anta profiling of added crosspieces

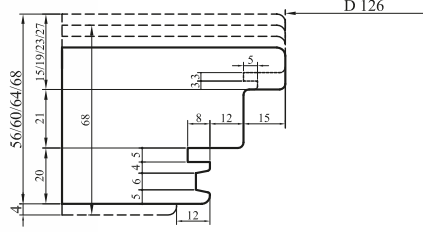
G 01 - PROFILO ANTE



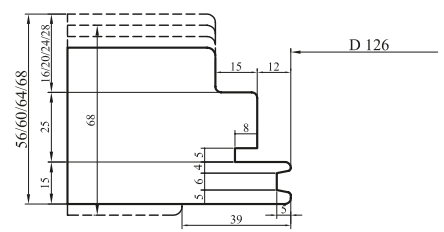
G 02 - RECUPERO LISTELLO



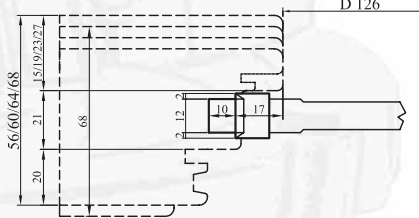
G 03 - SQUADRATURA ANTE



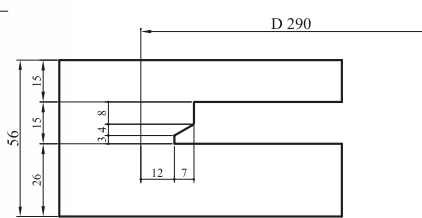
G 04 - SQUADRATURA MONTANTE CENTR. ANTA SX



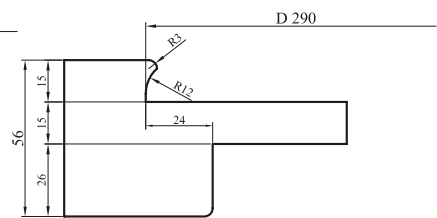
G 05 - SEDE FERRAMENTA



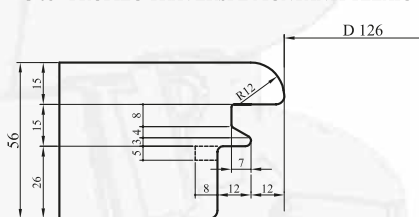
G 06 - TENONI MONTANTI TELAI



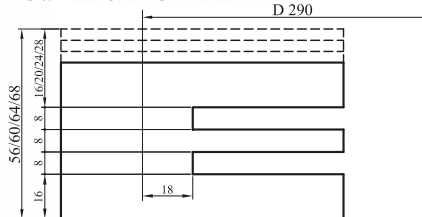
G 07 - TENONI TRAVERSI TELAI



G 08 - PROFILO TRAVERSI E MONTANTI TELAI



G 09 - TENONI MONTANTI ANTE



G 10 - TENONI TRAVERSI ANTE

