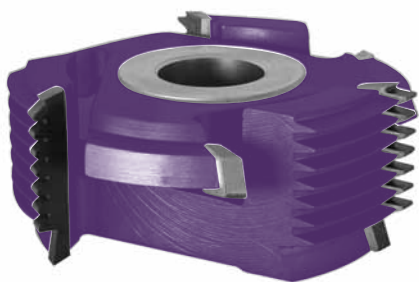


GRUPPO FRESE PER GIUNZIONI REGOLABILI 0040

ADJUSTABLE JOINT CUTTERS

1



Z=4/4 / Hc				
Cod.	D	S	A	P
001	140	15-75	8	8

A = profondità giunzione in mm. - joint depth in mm. P = passo giunzione in mm. - joint pitch in mm.
 D = diametro in mm. - diameter in mm. S = Spessore del legno in mm. - thickness of wood in mm.
 Z = numero dei taglienti- number of cutting edges

Esecuzione frese con limitatore di truciolo: aumento 15% - With cut limiting device execution 15% price increase

- INDICARE IL SENSO DI ROTAZIONE NELL'ORDINE
- INDICATE ROTATION SENSE WHEN ORDERING

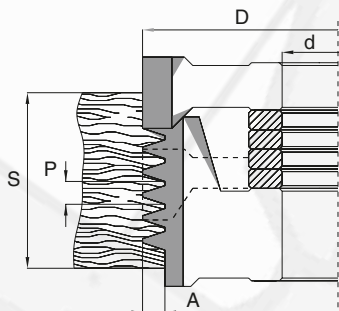


fig.1

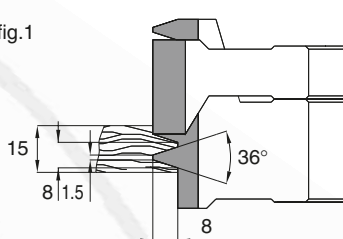


fig.4

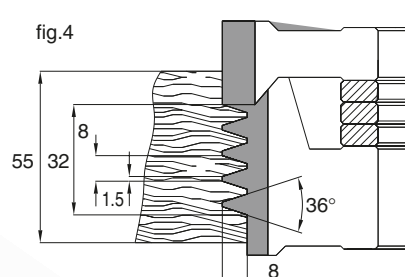


fig.2

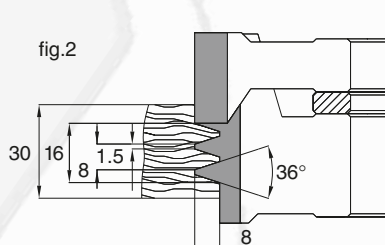
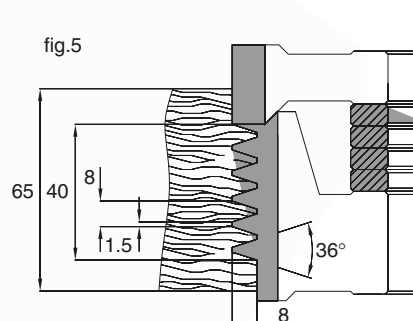


fig.5



CARATTERISTICHE TECNICHE

Le due frese sono regolabili mediante anelli distanziali in dotazione.
 Profondità di giunzioni eseguibili: 8 mm.
 Hc (HM riportato) per legni abrasivi, teneri, duri, incollati, MDF, multistrati.

IMPIEGO

SCORNICIATRICE, TOUPIE

TECHNICAL SPECIFICATIONS

The two cutters are adjustable by distance rings included.
 For joint depth: 8 mm
 Hc (brazed tungsten carbide) execution for abrasive, hard, soft and glued woods, MDF, plywood.

APPLICATION

MOULDER, SPINDLE MOULDER

fig.3

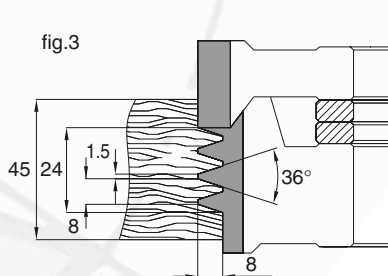


fig.6

