

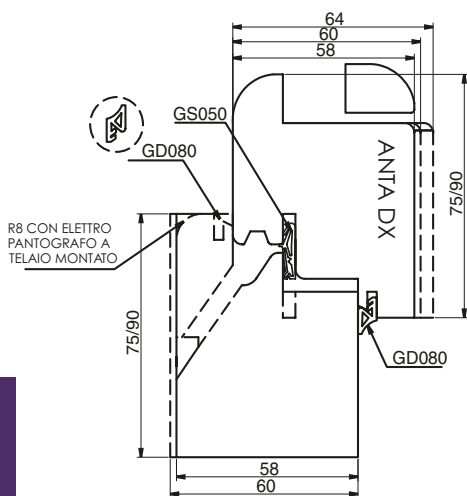
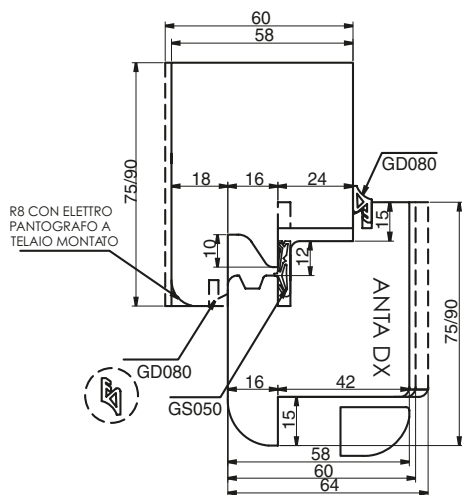
0816 GRUPPI PROGRAMMATI PER FINESTRE "EASY WINDOW" (VERSIONE SOLO LEGNO) PROGRAMMED TOOLS FOR WINDOWS "EASY WINDOW" (WOOD VERSION ONLY)

VERSIONE ARIA 4/12 - OPEN 4/12 VERSION

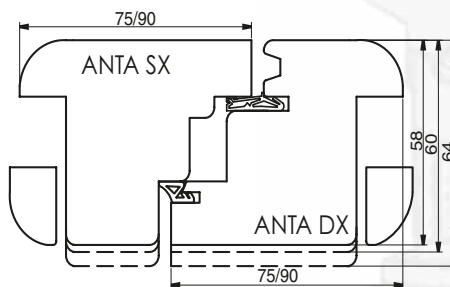
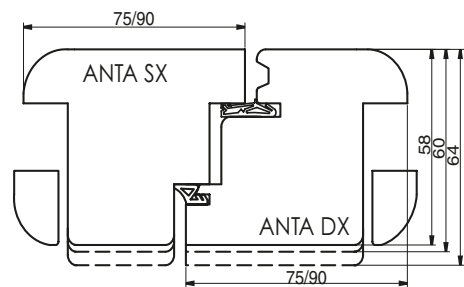
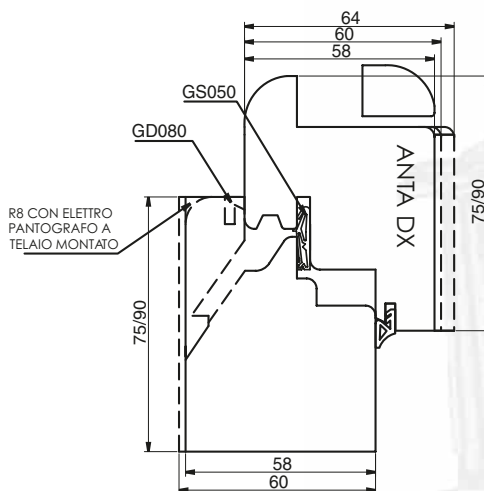
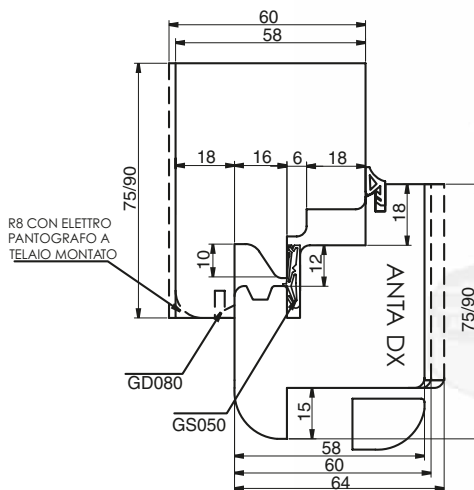
SPESSORE TELAIO 58 - 60 - 64 / FRAME THICKNESS 58 - 60 - 64

SPESSORE ANTA 58 - 60 - 64 - 68 (optional) / WING THICKNESS 58 - 60 - 64 - 68 (optional)

ARIA 4



ARIA 12



CARATTERISTICHE TECNICHE

Gruppi programmati a coltellini in HW (HM integrale).
La serie Easy Window è composta da **solo 14 teste con corpo in acciaio a grande resistenza e inserti in widia sostituibili e riaffilabili, le teste sono programmate tra loro** sia in diametro che in altezza, in modo da settare la macchina (toupie, come combinata) una volta soltanto.

IMPIEGO

TOUPIE/COMBINATA

TECHNICAL SPECIFICATIONS

Programmed tools with HW (integral tungsten carbide) inserts.
The base series EASY WINDOW is composed of **only 14 cutters with steel body high resistance and widia replaceable and sharpening inserts knives, the cutters are programmed each other** either in diameter and in height, in the way that you can set the machine (toupie-combined) only once.

APPLICATION

SPINDLE MOULDER/
COMBINED MACHINE

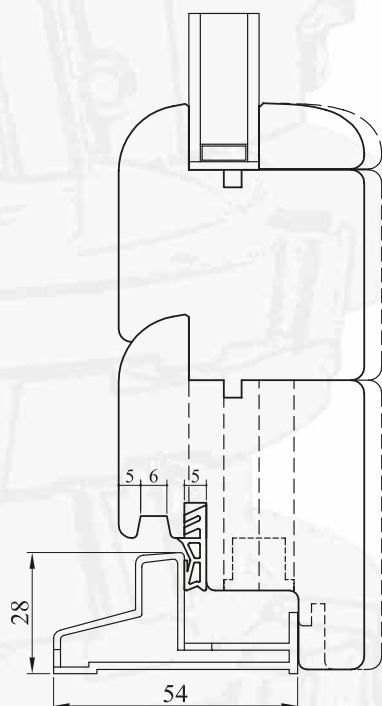


Cod.	D	Z	Descrizione - Description
001	100	2	profilatura interno anta - inside wing profiling
002	100	2	squadratura anta - wing squaring
003	100	2	squadratura montante centrale sx - squaring of central left wing jamb
004	100	2+2	esecuzione sede ferramenta - metal fittings seat execution
005	250	4	tenonatura montanti telaio - frame of jamb (upper part) tenoning
006	250	4	tenonatura traversi telaio - tenoning of frame cross pieces
007	100	2	profilo montanti e traversi telaio - profiling of crosspieces and wing jambs
008	250	4	tenonatura montanti anta - tenoning of wing jamb
009	250	4	tenonatura traversi anta - tenoning of wing cross pieces

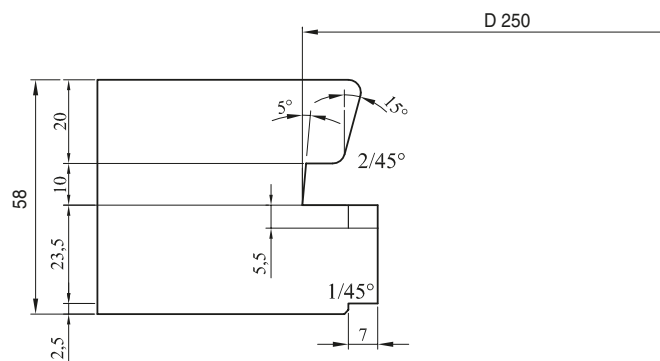
Cod.	TOTALE GRUPPO - TOTAL GROUP
020	VERSIONE LEGNO ARIA 4 - WOOD VERSION OPEN 4
021	VERSIONE LEGNO ARIA 12 - WOOD VERSION OPEN 12

VARIANTE PORTA BALCONE - DOOR - BALCONY VARIANT			
Cod.	D	Z	Descrizione - Description
030	250	4	tenonatura montanti inferiori telaio per traverso in alluminio a norme din
031	100	2	tenoning of lower frame jamb for aluminium crosspiece - din norms
032	100	2	profilatura traversi aggiunti anta profiling of added crosspieces

OPZIONI - OPTIONS			
Cod.	D	Z	Descrizione - Description
041	180	24	lama recupero listello 3 mm - saw for glass fixing lath regaining
042	100	2	profilatura traverso telaio per scarico acqua profiling of frame crosspiece for water release
043	180	24	kit lama/dentello per anta spessore 68 - saw/insert kit for wing wood 68



INTESTATA PARTE INFERIORE
MONTANTI TELAIO PER PORTA BALCONE



PROFILATURA E TENONATURA TRAVERSI
AGGIUNTI PER PORTA BALCONE

