

0035 FRESE PER GIUNZIONI

JOINT CUTTERS

Z=4 / Hc					
Cod.	D	B	P	A	H
001	140	25	8	8	8
002	140	40	8	8	16
003	140	50	8	8	24
004	140	40	7	10	21
005	140	50	7	10	28
006	140	60	7	10	35
007	140	80	7	10	49

A = profondità giunzione in mm. - *joint depth in mm.* B = spessore in mm. - *cutting height in mm.*
 H = altezza parte dentata in mm. - *joint height in mm.* P = passo giunzione in mm. - *joint pitch in mm.*
 Z = numero dei taglienti - *number of cutting edges* d = foro in mm - *bore in mm.*
 D = diametro in mm. - *diameter in mm.*

Esecuzione frese con limitatore di truciolo: aumento 15% - *With cut limiting device execution 15% price increase*

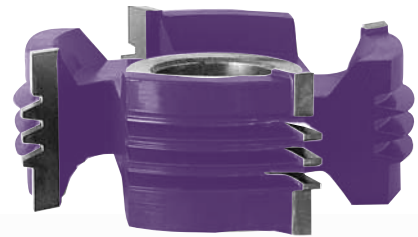


fig. 1

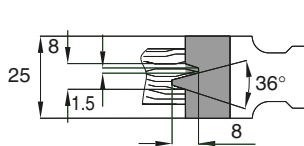


fig. 2

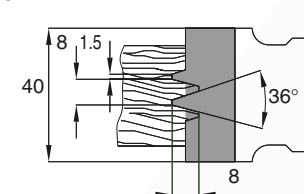


fig. 3

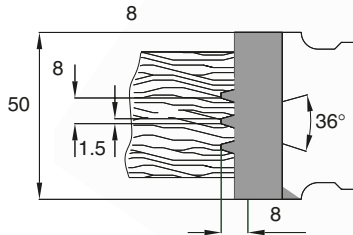


fig. 4

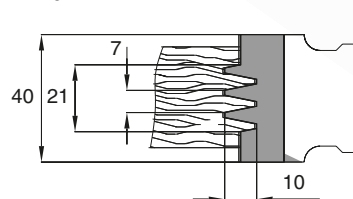


fig. 5

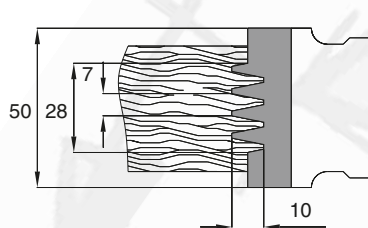


fig. 6

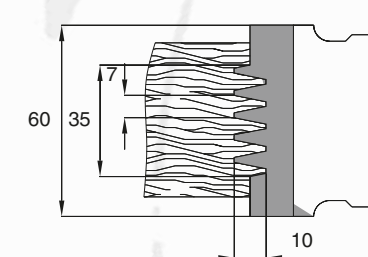
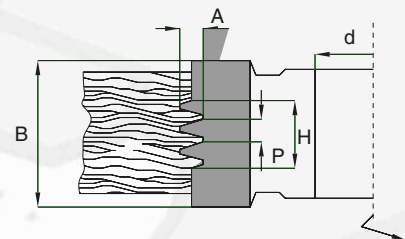
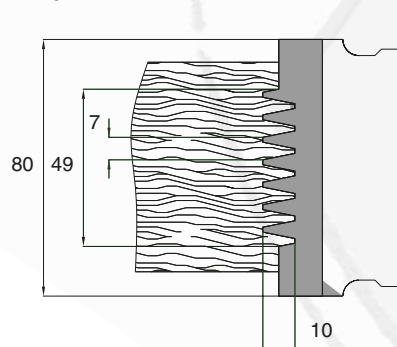


fig. 7



CARATTERISTICHE TECNICHE

Profondità di giunzioni eseguibili: 8 mm, 10 mm.
 Hc (HM riportato) per legni abrasivi, teneri, duri,
 incollati, MDF, multistrati

IMPIEGO

SCORNICIATRICE, TOUPIE

TECHNICAL SPECIFICATIONS

For joint depth: 8 mm, 10 mm
 Hc (brazed tungsten carbide)
 execution for abrasive, hard,
 soft and glued woods, MDF, plywood

APPLICATION

MOULDER, SPINDLE MOULDER