

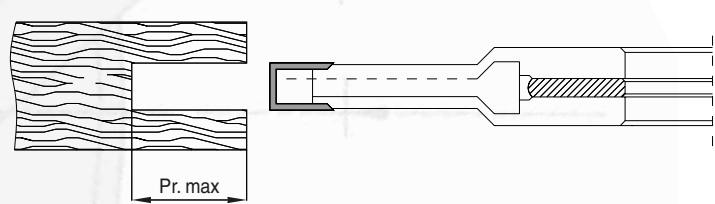
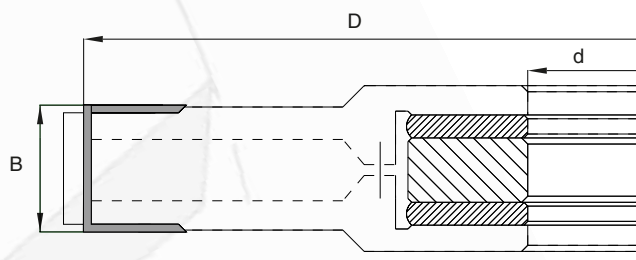


| Z=8+4 / Z=4+4 Ri / HW | | | | | | |
|-----------------------|-----|-------|---|----|-------|--------|
| Cod. | D | B | Z | Ri | d | Pr max |
| 001 | 120 | 4÷7,5 | 4 | 4 | 35-40 | 20 |
| 002 | 140 | 4÷7,5 | 4 | 4 | 35-40 | 25 |
| 003 | 160 | 4÷7,5 | 8 | 4 | 35-40 | 25 |
| 004 | 180 | 4÷7,5 | 8 | 4 | 35-40 | 30 |

B = spessore in mm. - cutting height in mm. Z = numero dei taglienti - number of cutting edges
 Pr max = prof. max d'incastro in mm. - max. depth of groove in mm. Ri = rasanti - spurs
 D = diametro in mm. - diameter in mm.

3

| RICAMBI - SPARE PARTS | | | |
|-----------------------|------|---|-------------|
| Art. | Cod. | Descrizione - Description | |
| 0540 | 001 | rasanti - spurs | 14 x 14 x 2 |
| 0543 | 001 | coltellini reversibili - reversible inserts | 18x18x1,9 |



CARATTERISTICHE TECNICHE

Testa con n.8 coltellini reversibili in HW (HM integrale) e n.4 rasanti in HW (HM integrale), posizionati 2 per ogni fianco dell'utensile. Mediante anelli in dotazione è possibile regolare lo spessore degli incastri.

IMPIEGO

SCORNICIATRICE, TOUPIE

TECHNICAL SPECIFICATIONS

Cutter with n.4 HW (integral tungsten carbide) reversible inserts and n.4 HW (integral tungsten carbide) spurs, 2 on each side of the tool. Grooves height adjustment is possible by distance rings included.

APPLICATION

MOULDER, SPINDLE MOULDER

