

# Комплектующие

**Common Rail**

**BOSCH**

**производитель  
OMS srl. Италия**



**[www.OMS-SPB.ru](http://www.OMS-SPB.ru)**

постоянное представительство OMS srl.  
на территории РФ.



1

## dadi cup nuts



CODICE: 02-04-056

rif.or. F 00V C14 010

rif.or. F 00V C14 018



CODICE: 02-04-192

rif.or. F 00R J00 001

rif.or. F 00R J00 842

rif.or. F 00R J02 552



CODICE: 02-04-149

rif.or. F 00V C14 012

rif.or. F 00V C14 013



CODICE: 02-04-193

rif.or. F 00R J00 841



CODICE: 02-04-190

rif.or. F 00V C14 015



CODICE: 02-04-194

rif.or. F 00R J01 208

rif.or. F 00R J01 152

rif.or. F 00R J00 295



CODICE: 02-04-191

rif.or. F 00R J00 422

rif.or. F 00R J00 843

rif.or. F 00R J01 101

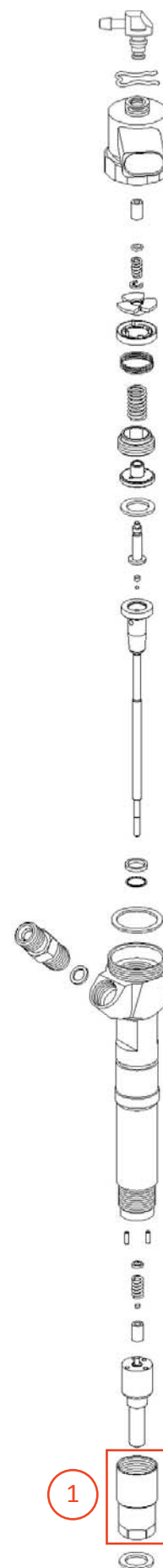


CODICE: 02-04-195

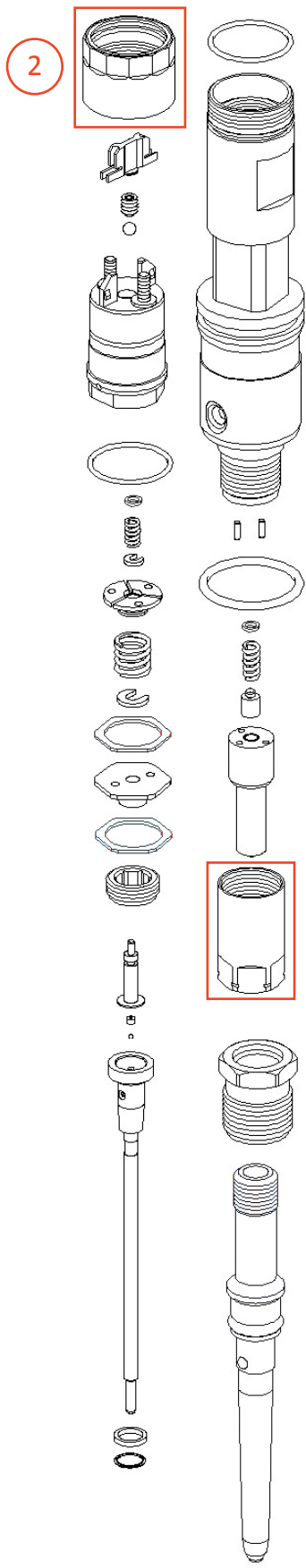
rif.or. F 00R J02 219

rif.or. F 00R J00 713

rif.or. F 00R J00 337







1

**dadi cup nuts**



CODICE: 02-04-196

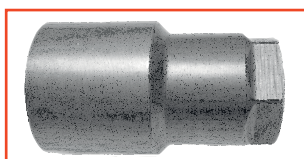
rif.or. F 00V C14 016



CODICE: 02-04-217

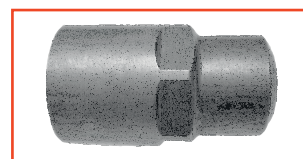
per 0 445 115 037

per 0 445 115 067



CODICE: 02-04-218

rif.or. F 00R J02 168



CODICE: 02-04-219

rif.or. F 00R J02 552

1

2

**dadi serraggio tight nuts**



CODICE: 02-06-038

rif.or. F 00R J01 637

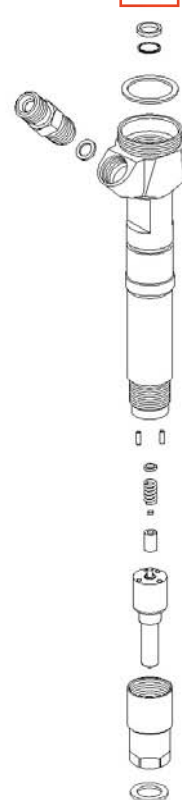


CODICE: 02-06-039

rif.or. F 00R J01 638



## valvole valves



CODICE	rif. originale	CODICE	rif. originale	CODICE	rif. originale
11-25-001	F 00R C00 019	11-25-037	F 00R J01 657	11-25-075	F 00R J02 453
11-25-002	F 00R C00 249	11-25-038	F 00R J01 683	11-25-076	F 00R J02 454
11-25-003	F 00R J00 005	11-25-039	F 00R J01 692	11-25-077	F 00R J02 466
11-25-004	F 00R J00 218	11-25-040	F 00R J01 704	11-25-078	F 00R J02 472
11-25-005	F 00R J00 298	11-25-041	F 00R J01 714	11-25-079	F 00R J02 492
11-25-006	F 00R J00 339	11-25-042	F 00R J01 727	11-25-080	F 00R J02 506
11-25-007	F 00R J00 375	11-25-043	F 00R J01 747	11-25-081	F 00R J02 561
11-25-008	F 00R J00 399	11-25-044	F 00R J01 819	11-25-082	F 00V C01 001
11-25-009	F 00R J00 420	11-25-045	F 00R J01 865	11-25-083	F 00V C01 003
11-25-010	F 00R J00 447	11-25-046	F 00R J01 895	11-25-084	F 00V C01 004
11-25-011	F 00R J00 527	11-25-047	F 00R J01 924	11-25-085	F 00V C01 005
11-25-012	F 00R J00 585	11-25-048	F 00R J01 941	11-25-086	F 00V C01 006
11-25-013	F 00R J00 751	11-25-049	F 00R J01 945	11-25-087	F 00V C01 007
11-25-014	F 00R J00 834 F 00R J02 454	11-25-050	F 00R J02 004	11-25-088	F 00V C01 009
11-25-015	F 00R J00 992	11-25-051	F 00R J02 005	11-25-089	F 00V C01 010
11-25-016	F 00R J00 995	11-25-052	F 00R J02 012	11-25-090	F 00V C01 011
11-25-017	F 00R J01 003	11-25-053	F 00R J02 016	11-25-091	F 00V C01 012
11-25-018	F 00R J01 052	11-25-054	F 00R J02 035	11-25-092	F 00V C01 013
11-25-019	F 00R J01 099	11-25-055	F 00R J02 044	11-25-093	F 00V C01 014
11-25-020	F 00R J01 129 F 00R J01 941	11-25-056	F 00R J02 056	11-25-094	F 00V C01 015
11-25-021	F 00R J01 159	11-25-057	F 00R J02 067	11-25-095	F 00V C01 016
11-25-022	F 00R J01 176	11-25-058	F 00R J02 073	11-25-096	F 00V C01 017
11-25-023	F 00R J01 189	11-25-059	F 00R J02 079	11-25-097	F 00V C01 018
11-25-024	F 00R J01 218	11-25-060	F 00R J02 103	11-25-098	F 00V C01 020
11-25-025	F 00R J01 222	11-25-061	F 00R J02 122	11-25-099	F 00V C01 022
11-25-026	F 00R J01 278	11-25-062	F 00R J02 130	11-25-100	F 00V C01 023
11-25-027	F 00R J01 326	11-25-063	F 00R J02 213	11-25-101	F 00V C01 024
11-25-028	F 00R J01 329	11-25-064	F 00R J02 235	11-25-102	F 00V C01 033
11-25-029	F 00R J01 334	11-25-065	F 00R J02 246	11-25-103	F 00V C01 034
11-25-030	F 00R J01 428	11-25-066	F 00R J02 266	11-25-104	F 00V C01 035
11-25-031	F 00R J01 451	11-25-067	F 00R J02 278	11-25-105	F 00V C01 036
11-25-032	F 00R J01 479	11-25-068	F 00R J02 304	11-25-106	F 00V C01 037
11-25-033	F 00R J01 508	11-25-069	F 00R J02 377	11-25-107	F 00V C01 038
11-25-034	F 00R J01 522	11-25-070	F 00R J02 386	11-25-108	F 00V C01 040
11-25-035	F 00R J01 533	11-25-071	F 00R J02 397	11-25-109	F 00V C01 042
11-25-036	F 00R J01 565	11-25-072	F 00R J02 410	11-25-110	F 00V C01 043
		11-25-073	F 00R J02 429	11-25-111	F 00V C01 044
		11-25-074	F 00R J02 449		



## valvole valves



CODICE	rif. originale	CODICE	rif. originale	CODICE	rif. originale
11-25-112	F 00V C01 045	11-25-147	F 00V C01 329 F 01G 201 011	11-25-181	F 00V C01 369
11-25-113	F 00V C01 046	11-25-148	F 00V C01 330	11-25-182	F 00V C01 370
11-25-114	F 00V C01 050	11-25-149	F 00V C01 331	11-25-183	F 00V C01 371
11-25-115	F 00V C01 051	11-25-150	F 00V C01 332	11-25-184	F 00V C01 372
11-25-116	F 00V C01 052	11-25-151	F 00V C01 333	11-25-185	F 00V C01 373
11-25-117	F 00V C01 053	11-25-152	F 00V C01 334	11-25-186	F 00V C01 374
11-25-118	F 00V C01 054	11-25-153	F 00V C01 336	11-25-187	F 00V C01 375
11-25-119	F 00V C01 055	11-25-154	F 00V C01 338	11-25-188	F 00V C01 376
11-25-120	F 00V C01 057	11-25-155	F 00V C01 340	11-25-189	F 00V C01 377
11-25-121	F 00V C01 200	11-25-156	F 00V C01 341	11-25-190	F 00V C01 378
11-25-122	F 00V C01 300	11-25-157	F 00V C01 342	11-25-191	F 00V C01 379
11-25-123	F 00V C01 301	11-25-158	F 00V C01 344	11-25-192	F 00V C01 380
11-25-124	F 00V C01 303	11-25-159	F 00V C01 345	11-25-192	F 00V C01 381
11-25-125	F 00V C01 304	11-25-160	F 00V C01 346	11-25-193	F 00V C01 382
11-25-126	F 00V C01 305	11-25-161	F 00V C01 347	11-25-194	F 00V C01 383
11-25-127	F 00V C01 306	11-25-162	F 00V C01 348	11-25-195	F 00V C01 384
11-25-128	F 00V C01 307	11-25-163	F 00V C01 351	11-25-196	F 00V C01 385
11-25-129	F 00V C01 309	11-25-164	F 00V C01 352	11-25-197	F 00V C01 386
11-25-130	F 00V C01 310	11-25-165	F 00V C01 353	11-25-198	F 00V C01 500
11-25-131	F 00V C01 311	11-25-166	F 00V C01 354	11-25-199	F 00V C01 501
11-25-132	F 00V C01 312	11-25-167	F 00V C01 355	11-25-200	F 00V C01 A43
11-25-133	F 00V C01 313	11-25-168	F 00V C01 356	11-25-201	F 00V C01 D01
11-25-134	F 00V C01 315	11-25-169	F 00V C01 357	11-25-202	F 00V C01 S01
11-25-135	F 00V C01 316	11-25-170	F 00V C01 358	11-25-203	F 00V C01 S45
11-25-136	F 00V C01 317	11-25-171	F 00V C01 359	11-25-204	F 00V P07 051
11-25-137	F 00V C01 318	11-25-172	F 00V C01 360	11-25-205	F 00V P07 055
11-25-138	F 00V C01 319	11-25-173	F 00V C01 361	11-25-206	F 00V P07 060
11-25-139	F 00V C01 320	11-25-174	F 00V C01 362	11-25-207	F 00V P07 070
11-25-140	F 00V C01 321	11-25-175	F 00V C01 363	11-25-208	F 00V P07 201
11-25-141	F 00V C01 322	11-25-176	F 00V C01 364	11-25-209	F 00V P07 205
11-25-142	F 00V C01 323	11-25-177	F 00V C01 365	11-25-210	F 00V P07 208
11-25-143	F 00V C01 324	11-25-178	F 00V C01 366	11-25-211	F 00R J02 714
11-25-144	F 00V C01 325	11-25-179	F 00V C01 367	11-25-212	F 00R J02 806
11-25-145	F 00V C01 327	11-25-180	F 00V C01 368	11-25-213	F 00V C01 349
11-25-146	F 00V C01 328				



1

## guarnizione valvola valve ring



CODICE: 11-23-207

rif.or. F 00V C04 049



CODICE: 11-23-211

rif.or. F 00V C17 105

**KIT: 11-23-212**

rif.or. F 00R J02 176

rif.or. F 00V C99 002

**KIT: 11-23-333**

rif.or. F 00R J02 177

2

## spina pin

Ø 1,8 lungh. 6



CODICE: 11-23-226

rif.or. 2 433 201 024

3

## boccola di guida bush



CODICE: 11-23-353

rif.or. F 00V C40 401



CODICE: 11-23-410

rif.or. F 00R J01 301

4

## bussola di fermo bush stop



CODICE: 11-23-411

rif.or. F 00V C40 300



CODICE: 11-23-412

rif.or. F 00V C40 302

4

1

2

3







1

## molle solenoide springs solenoid



CODICE	rif. originale
02-02-054	F 00V C09 064
02-02-046	F 00V C09 301
02-02-055	F 00V C09 302
02-02-056	F 00V C09 304 F 00V C09 305
02-02-047	F 00R J00 236
02-02-058	F 00R J00 308
02-02-059	F 00R J00 657
02-02-060	F 00R J02 707

2

## molle indotto springs



CODICE	rif. originale
02-02-061	F 00R J01 339
02-02-062	F 00V C09 002
02-02-045	F 00V C09 012
02-02-063	F 00V C09 013

3

## molle pulverizzatore nozzle springs

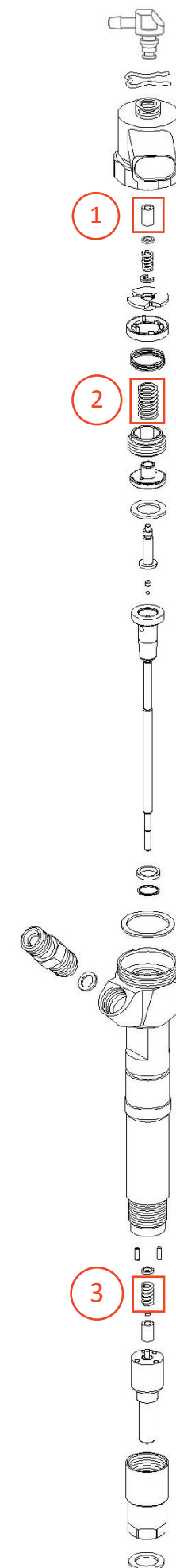


CODICE	rif. originale
02-02-044	F 00V C09 023

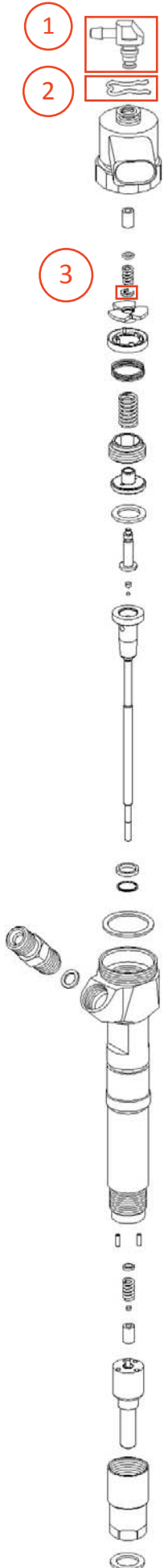
1

2

3







1

**raccordo recupero joint**

PLASTIC	METAL
	
CODICE: 02-07-034	02-07-034/1
	
CODICE: 02-07-035	02-07-035/1

2

**molletta di fermo clip**






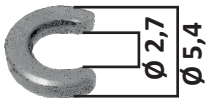
CODICE: 02-21-046

rif.or. F 00V C22 003

3

**fermo molla looking washer**

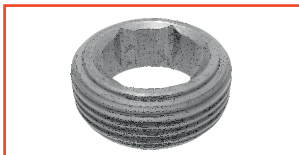
		
spessore shim 1 mm	spessore shim 1,3 mm	spessore shim 1,3 mm
CODICE: 11-23-234	CODICE: 11-23-408	CODICE: 11-23-409

	misura	cod.originale	cod.OMS
	1,155	F 00V C18 300	11-23-396/1155
	1,165	F 00V C18 302	11-23-396/1165
	1,175	F 00V C18 304	11-23-396/1175
	1,185	F 00V C18 306	11-23-396/1185
	1,195	F 00V C18 308	11-23-396/1195
	1,205	F 00V C18 310	11-23-396/1205
	1,215	F 00V C18 312	11-23-396/1215
	1,225	F 00V C18 314	11-23-396/1225
	1,235	F 00V C18 316	11-23-396/1235
	1,245	F 00V C18 318	11-23-396/1245
	1,255	F 00V C18 320	11-23-396/1255
	1,265	F 00V C18 322	11-23-396/1265



1

## ghiera di bloccaggio blocking nut



CODICE: 11-23-292

rif.or. F 00V C13 002



CODICE: 11-23-293

rif.or. F 00V C13 007

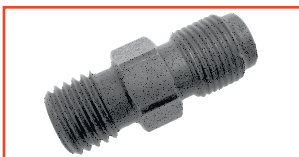


CODICE: 11-23-300

rif.or. F 00R J00 840

2

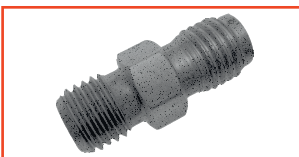
## raccordo entrata fitting



CODICE: 02-07-040

rif.or. F 00V C16 009

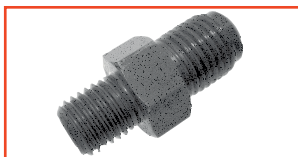
rif.or. F 00V C16 024



CODICE: 02-07-041

rif.or. F 00V C16 017

rif.or. F 00V C16 027



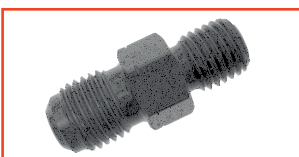
CODICE: 02-07-044

rif.or. F 00R J00 210



CODICE: 02-07-045

rif.or. F 00R J01 343



CODICE: 02-07-046

rif.or. F 00R J00 424



CODICE: 02-07-047

rif.or. F 00V C16 013



CODICE: 02-07-049

rif.or. F 00R J02 221

1

2

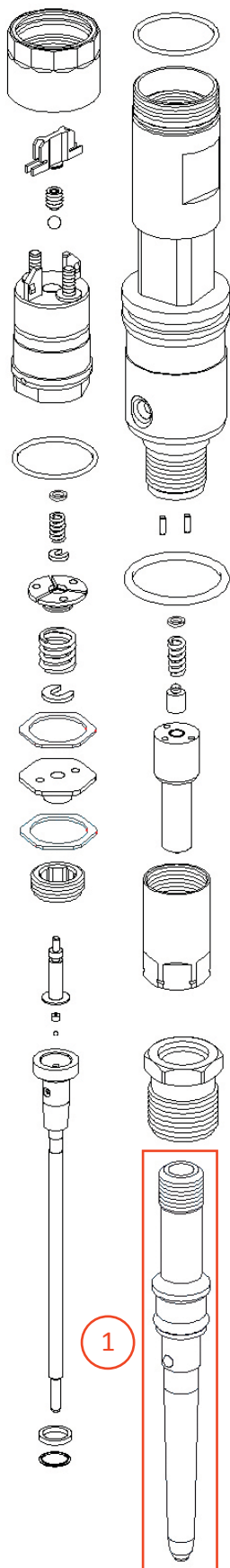






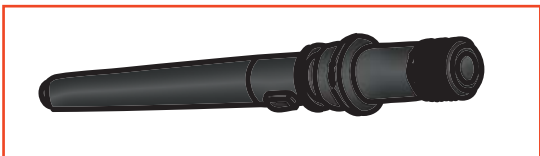
1

**raccordo tubo di mandata inlet connector**



CODICE: 02-07-051

rif.or. F 00R J00 753



CODICE: 02-07-052

rif.or. F 00R J01 831



CODICE: 02-07-053

rif.or. F 00R J01 280



CODICE:02-07-054

rif.or. F 00R J01 535



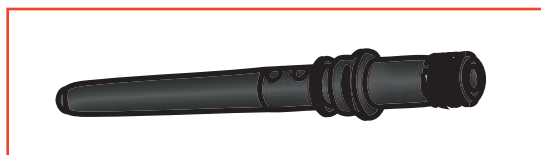
CODICE: 02-07-055

rif.or. F 00R J01 457



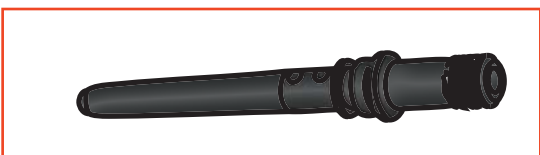
CODICE: 02-07-056

rif.or. F 00R J01 468



CODICE: 02-07-057

rif.or. F 00R J01 659



CODICE: 02-07-058

rif.or. F 00R J00 414



1

## raccordo tubo di mandata inlet connector



CODICE: 02-07-059

rif.or. F 00R J01 730



CODICE: 02-07-060

rif.or. F 00R J01 919

rif.or. F 00R J00 463



CODICE: 02-07-061

rif.or. F 00R J01 572



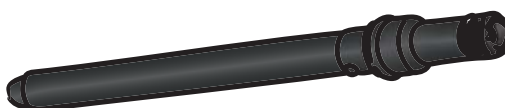
CODICE: 02-07-062

rif.or. F 00R J01 247



CODICE: 02-07-063

rif.or. F 00R J00 978



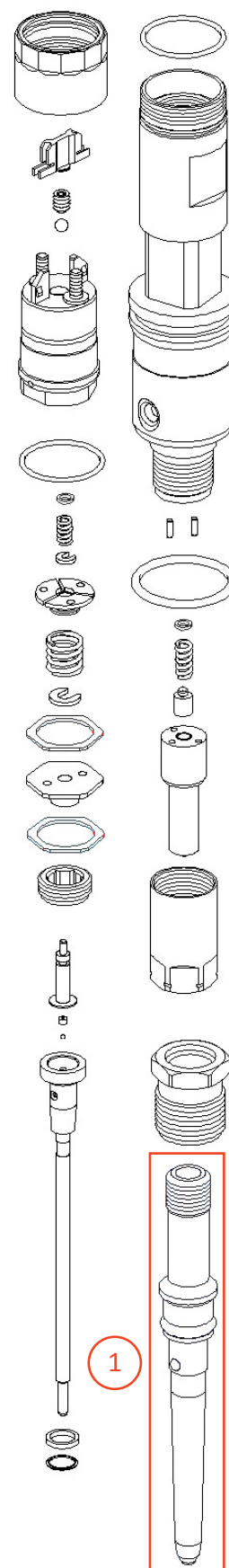
CODICE: 02-07-064

rif.or. F 00R J01 029



CODICE: 02-07-065

rif.or. F 00R J01 191





1

## rondella acciaio steel washer

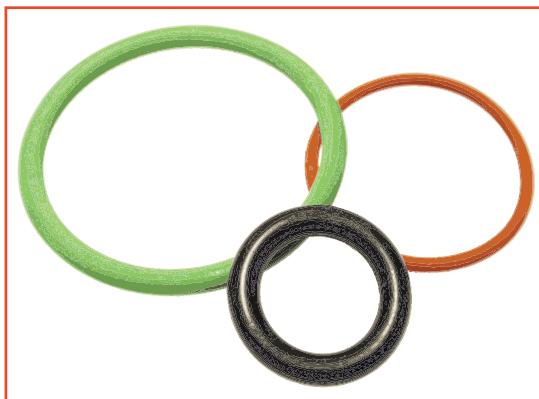


CODICE: 11-23-209

rif.or. F 00V C17 002

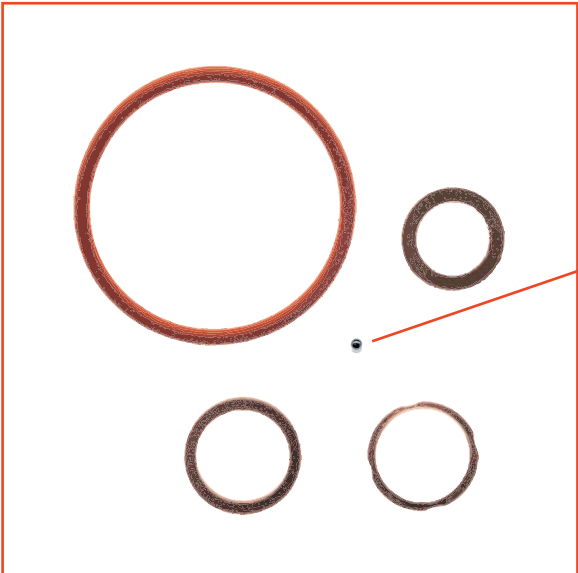
rif.or. F 00V C17 003

## seal ring



CODICE	rif. originale
14-15-179	F 00V D38 010
14-15-162	F 00R J00 220
14-15-160	F 00R J01 878
14-15-161	F 00R J00 534
14-15-208	F 00R J00 835
14-15-137	2 430 210 081 F 00R J01 026
14-15-073	F 00V C38 002
14-15-163	F 00R J00 222
14-15-169	F 00R J01 605
14-15-217	F 00R J01 452
14-15-080	F 00V C38 042
14-15-261	F 00R J02 236
14-15-262	F 00R J01 951
14-15-263	F 00R J01 950
14-15-264	F 00R Y01 728


1

ceramic ball

**KIT: 11-23-239**

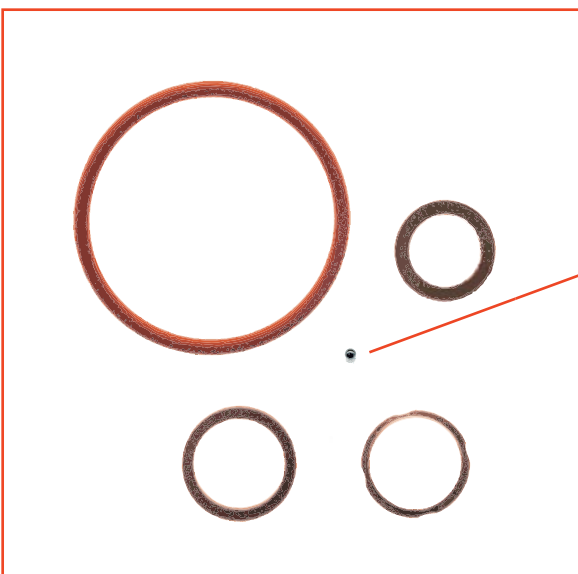
1	rif.or. F 00V C05 002 rif.or F 00V C05 008
1	rif.or. F 00V C17 002
1	rif.or. F 00V C17 105
1	rif.or. F 00V C04 049
1	rif.or. F 00R J00 222



steel ball

**KIT: 11-23-216**

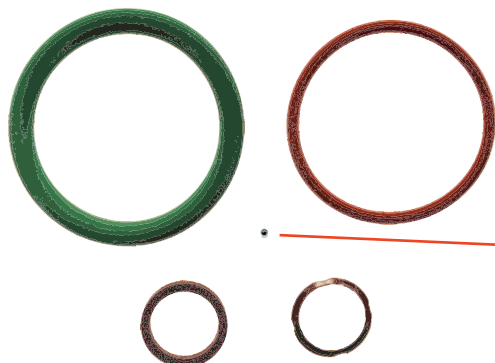
1	rif.or. F 00V C05 001
1	rif.or. F 00V C17 002
1	rif.or. F 00R J00 220
1	rif.or. 2 460 210 249
1	rif.or. F 00V C04 049
1	rif.or. F 00V C17 105



steel ball

**KIT: 11-23-214**

1	rif.or. F 00V C05 001
1	rif.or. F 00V C17 002
1	rif.or. F 00V C17 105
1	rif.or. F 00V C04 049
1	rif.or. F 00R J00 222



steel ball

**KIT: 11-23-478**

1	KIT rif.or. F 00R J02 177
1	rif.or. F 00R J01 026
1	rif.or. F 00R J00 222
1	rif.or. F 00V C05 001

### rondella base iniettore injector thermal washer



CODICE	rif.originale
14-05-323	2 430 105 043
02-11-002	2 430 105 049
02-11-001	2 430 105 050
14-05-248	F 00R J01 086
14-05-280	F 00R J01 453
14-05-304	F 00R J02 175
14-05-229	F 00V C17 503
14-05-235	F 00V C17 505
14-05-223	F 00V C17 504
14-05-302	F 00V P01 004

### vite fissaggio steel washer



CODICE: 11-23-356/1

MERCEDES CLASSE A



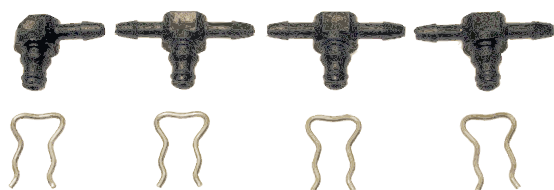
CODICE: 11-23-196/1

MERCEDES CLASSE C



KIT 30 VITI 11-23-196

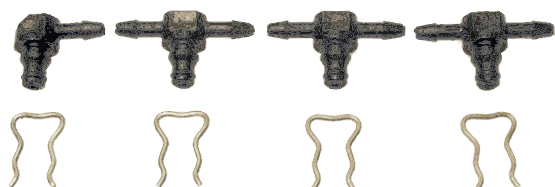
MERCEDES CLASSE C



### KIT RECUPERO 4 CILINDRI

**11-23-289**

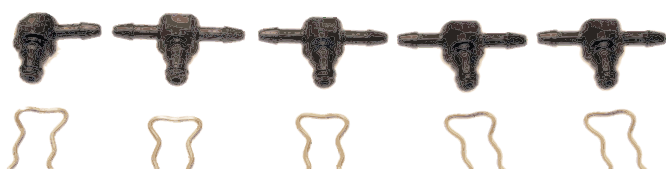
1 mt tubo telato esterno  
per gasolio 3x7



### KIT RECUPERO 4 CILINDRI

**11-23-289/1**

1 mt tubo telato interno  
per gasolio 3x7



### KIT RECUPERO 5 CILINDRI

**11-23-290**

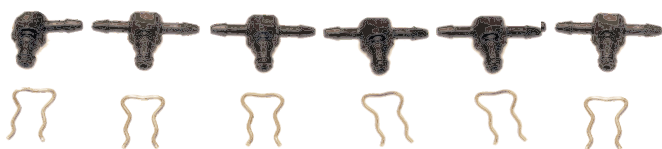
1 mt tubo telato esterno  
per gasolio 3x7



### KIT RECUPERO 5 CILINDRI

**11-23-290/1**

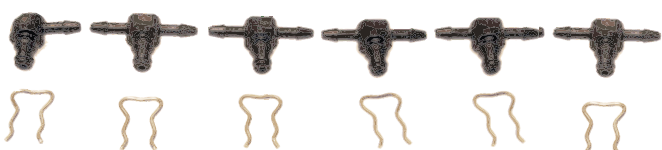
1 mt tubo telato interno  
per gasolio 3x7



### KIT RECUPERO 6 CILINDRI

**11-23-291**

1 mt tubo telato esterno  
per gasolio 3x7



### KIT RECUPERO 6 CILINDRI

**11-23-291/1**

1 mt tubo telato interno  
per gasolio 3x7





**KIT: 11-23-510**

adattabile a: 0 445 120 009/003/004  
suitable to: 010/014/015

**KIT: 11-23-511**

adattabile a: 0 445 120 028/006/007  
suitable to: 008/012/013/016  
017/029/035/037  
038/043/044/070  
077/079/089/094  
097/112/115/120  
121/122/125/133  
140/144/212/236  
237/240/241/272  
273

**KIT: 11-23-512**

adattabile a: 0 445 120 040/041  
suitable to:

**KIT: 11-23-513**

adattabile a: 0 445 120 042  
suitable to:

**KIT: 11-23-514**

adattabile a: 0 445 120 045/044/055  
suitable to: 056/068/098/099  
105/147/148/154

**KIT: 11-23-515**

adattabile a: 0 445 120 048/049/090  
suitable to: 091/093/126

**KIT: 11-23-516**

adattabile a: 0 445 120 050/071/193  
suitable to:

**KIT: 11-23-517**

adattabile a: 0 445 120 031  
suitable to:

**KIT: 11-23-518**

adattabile a: 0 445 120 054/057/075  
suitable to:

**KIT: 11-23-519**

adattabile a: 0 445 120 002/011/033  
 suitable to: 034/036/047/051  
 052/096/108/173  
 174/175

**KIT: 11-23-520**

adattabile a: 0 445 120 018/032/046  
 suitable to: 069/103/113/114  
 208/209/210/211  
 238/254/255/256

**KIT: 11-23-521**

adattabile a: 0 445 120 024/053  
 suitable to:

**KIT: 11-23-522**

adattabile a: 0 445 120 025  
 suitable to:

**KIT: 11-23-523**

adattabile a: 0 445 120 058  
 suitable to:

**KIT: 11-23-524**

adattabile a: 0 445 120 059/060/123  
 suitable to: 151/152/231/239  
 250/252

**KIT: 11-23-525**

adattabile a: 0 445 120 062/226  
 suitable to:

**KIT: 11-23-526**

adattabile a: 0 445 120 063  
 suitable to:

**KIT: 11-23-527**

adattabile a: 0 445 120 065/064/074  
 suitable to: 136/137/138/139





**KIT: 11-23-528**

adattabile a: 0 445 120 066/067  
 suitable to:



**KIT: 11-23-529**

adattabile a: 0 445 120 072/073/076  
 suitable to:



**KIT: 11-23-530**

adattabile a: 0 445 120 078/080/027  
 suitable to: 124/141



**KIT: 11-23-531**

adattabile a: 0 445 120 082  
 suitable to:



**KIT: 11-23-532**

adattabile a: 0 445 120 083/110  
 suitable to:



**KIT: 11-23-533**

adattabile a: 0 445 120 086/087/127  
 suitable to:



**KIT: 11-23-534**

adattabile a: 0 445 120 095  
 suitable to:



**KIT: 11-23-535**

adattabile a: 0 445 120 102  
 suitable to:



**KIT: 11-23-536**

adattabile a: 0 445 120 109  
 suitable to: