

Radbefestigung  
Fixation de Roue  
Fissaggio Ruota  
Fijación de Ruedas  
Колесное крепление



# Wheel Fastening



Edition  
2016/2017





**Company · Unternehmen** 4 - 5

**Introduction · Einleitung** 6 - 7

**Picture overview · Bildübersicht** 8 - 13

**Dimensions · Abmessungen** 13 - 27

**Locking wheel bolts / nuts ·  
Radsicherungsschrauben / -muttern** 28 - 29

**Vehicle types · Fahrzeugtypen** 30 - 143

**Safety information ·  
Sicherheitsinformationen** 144 - 145

**Notes · Hinweise** 146 - 147

Alfa Romeo

30 - 31

Mercedes-Benz

71 - 92

Audi

31 - 33

MINI

92 - 93

BMW

33 - 37

Mitsubishi

93 - 96

Buick

37

Nissan

96 - 99

Chevrolet

37 - 39

Opel

99 - 101

Citroën

39 - 45

Peugeot

102 - 108

Dacia

45 - 47

Porsche

108 - 109

Daewoo

47 - 48

Renault

109 - 117

Dodge

48 - 49

Saab

117

Fiat

50 - 53

Scion

117

Ford

53 - 63

Seat

117 - 119

Honda

63 - 65

Škoda

119

Hyundai

65 - 66

Smart

120 - 121

Iveco

66

Suzuki

121 - 123

Kia

67

Toyota

123 - 129

Lancia

67

Vauxhall

129 - 132

Lexus

68 - 69

Volkswagen

133 - 141

Mazda

69 - 71

Volvo

141 - 143

## With More than 60 years of experience in the Independent Aftermarket

SWAG is one of the leading global partners to the wholesale with manufacturing competence for automotive spare parts in the independent aftermarket. SWAG has been a synonym for high quality with extremely short delivery times since 1954.

## Mehr als 60 Jahre Erfahrung im freien Ersatzteil- markt

SWAG gehört zu den weltweit führenden Großhandelspartnern mit Herstellerkompetenz für automotiv Verschleißteile im freien Ersatzteilmarkt. Bereits seit 1954 steht SWAG für hochwertige Qualität bei kürzesten Lieferzeiten.





## „Best Choice for Spare Parts“

We are committed to this motto "to your benefit" because SWAG stands for

- Excellent packaging and distribution
- More than 25.000 common spare parts for German and other European vehicle types

## High availability from stock – short delivery times

Our high availability from stock and short delivery times give our customers and partners a maximum in planning reliability.

## „Best Choice for Spare Parts“

Dieses Motto ist für uns eine Verpflichtung – und Ihr Vorteil. Denn SWAG steht für

- marktgerechte Verpackungseinheiten
- über 25.000 gängige Verschleißteile für alle deutschen und andere europäischen Fahrzeugtypen

## Hohe Lagerverfügbarkeit – kurze Lieferzeiten

Unsere hohe Lagerverfügbarkeit und kurze Lieferzeiten geben unseren Kunden und Partnern ein Höchstmaß an Planungssicherheit.



*SWAG applies a simple standard to its products: OE-matching quality. This helps us maintain our market-leading position.*

*SWAG legt bei seinen Produkten einen einfachen Maßstab an: Erst-ausrüstungsqualität. Damit halten wir im freien Ersatzteilmarkt weltweit eine Spitzenposition.*

**GB**

### **Wheel bolts from SWAG: Arrive safely!**

For us, wheel bolts call for the highest standards in safety, performance and durability. Aluminium or steel rims, anti-theft or particularly corrosion-resistant: in our product range you can always find the right wheel fastener.

Wheel bolts from SWAG feature the right dimensions, excellent attachment characteristics and high quality. We provide the right screw or nut with the right coating, from Dacromet 320 or 500 to Corrolube GFS2, for every popular model. SWAG offers the wheel fasteners your customers need!

**D**

### **Radschrauben von SWAG: Mit Sicherheit ankommen!**

Radschrauben bedeuten für uns höchste Anforderungen an Sicherheit, Leistung und Langlebigkeit. Ob Aluminium- oder Stahlfelge, ob diebstahlhemmend oder besonders korrosionsbeständig, in unserem Sortiment finden Sie immer die richtige Radbefestigung.

Radschrauben von SWAG zeichnen sich durch die richtige Bemaßung, hervorragende Montageeigenschaften und hochwertige Qualität aus. Wir bieten für alle gängigen Modelle die passende Schraube oder Mutter mit der richtigen Beschichtung: von Dacromet 320, 500 bis Corrolube GFS2. SWAG bietet Ihnen die Radbefestigungen, die Ihre Kunden benötigen!

**F**

### **Les vis de roue SWAG ou comment arriver à destination en toute sécurité!**

Pour SWAG, les vis de roue doivent répondre aux critères les plus stricts de sécurité, de performance et de durabilité. Dans notre gamme de produits, vous trouverez toujours les fixations de roue adaptées à vos besoins : jantes aluminium ou acier, protection accrue contre le vol ou contre la corrosion.

Les vis de roue SWAG se caractérisent par leur cotation fonctionnelle optimale, des caractéristiques de montage exceptionnelles et une qualité maximale. Nos vis et nos écrous sont compatibles avec tous les modèles les plus courants, et disposent toujours du revêtement approprié: des traitements Dacromet 320 et 500 jusqu'au lubrifiant Corrolube GFS2. SWAG propose les fixations de roue dont vos clients ont besoin!

**I**

## **Bulloni per cerchi SWAG: Per viaggiare sicuri!**

I nostri bulloni devono soddisfare i più elevati requisiti in termini di sicurezza, prestazioni e durata. Per cerchi in alluminio o in acciaio, per esigenze antifurto o per ottenere una particolare resistenza alla corrosione, la nostra gamma di prodotti offre sempre il giusto fissaggio delle ruote.

I bulloni per cerchi SWAG si distinguono grazie ad una giusta quotatura, ad eccezionali caratteristiche di montaggio e alla loro qualità pregiata. Per tutti i modelli in commercio offriamo la vite o il dado con il rivestimento adatto, da Dacromet 320 o 500 a Corrolube GFS2. SWAG mette a Sua disposizione il fissaggio delle ruote di cui necessitano i Suoi clienti!

**E**

## **Tornillos de rueda de SWAG: ¡Para que llegue con seguridad a su destino!**

Nuestros tornillos de rueda cumplen los más estrictos requisitos de seguridad, rendimiento y durabilidad. Para llantas de aluminio o de acero, con seguro antirrobo o con resistencia extra a la corrosión: en nuestro surtido encontrará siempre la sujeción de rueda que está buscando.

Los tornillos de rueda de SWAG convencen porque ofrecen las dimensiones correctas, por sus excelentes características de montaje y por su elevada calidad. Tenemos las tuercas y los tornillos adecuados para todos los modelos más habituales. Todos ellos cuentan con el revestimiento apropiado: desde Dacromet 320, 500 hasta Corrolube GFS2. SWAG le proporciona las sujeciones de rueda que sus clientes necesitan!

**RUS**

## **Колесные болты от SWAG: с нами Вы доедете безопасно!**

Колесные болты для нас означают максимальные требования к безопасности, эффективности и долговечности. Идет ли речь об алюминиевых или стальных колесных дисках, о противоугонных или особенно стойких к коррозии болтах, в нашем ассортименте всегда найдется нужное крепление для колес.

Колесные болты от SWAG отличаются правильными размерами, отличными условиями для монтажа и высоким качеством. Для всех распространенных моделей мы предлагаем подходящие болты или гайки с правильным покрытием: от Dacromet 320, 500 до Corrolube GFS2. SWAG предлагает крепления для колес, которые нужны Вашим заказчикам!



1

SWAG  
10 90 3857



2

SWAG  
10 90 5039



3

SWAG  
10 90 5123



4

SWAG  
10 90 9805



5

SWAG  
10 90 9806



6

SWAG  
10 91 2862



7

SWAG  
10 91 4519



8

SWAG  
10 91 8913



9

SWAG  
10 92 2474



10

SWAG  
10 92 3933



11

SWAG  
10 92 4645



12

SWAG  
10 92 9196



13

SWAG  
10 92 9466



14

SWAG  
10 93 8021



15

SWAG  
10 94 4869



16

SWAG  
10 94 5757



17

SWAG  
12 92 7578



18

SWAG  
13 93 3925



19

SWAG  
13 93 3928



20

SWAG  
20 90 3375



**21**

SWAG  
20 91 8538



**22**

SWAG  
20 91 8903



**23**

SWAG  
20 92 6744



**24**

SWAG  
20 93 2292



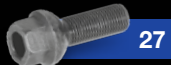
**25**

SWAG  
30 94 5850



**26**

SWAG  
32 90 1664



**27**

SWAG  
32 90 4912



**28**

SWAG  
32 91 7818



**29**

SWAG  
32 92 1588



**30**

SWAG  
32 92 3368



**31**

SWAG  
38 91 9656



**32**

SWAG  
40 93 8008



**33**

SWAG  
40 94 0606



**34**

SWAG  
40 94 5063



**35**

SWAG  
40 94 5788



**36**

SWAG  
40 94 5789



**37**

SWAG  
50 90 3424



**38**

SWAG  
50 90 6218



**39**

SWAG  
50 90 7176



**40**

SWAG  
50 92 6102



**41**

SWAG  
50 92 6287



**42**

SWAG  
50 92 7413



**43**

SWAG  
50 92 9463



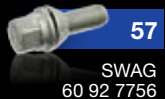
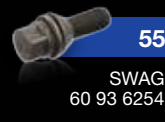
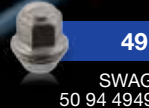
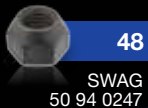
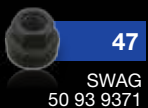
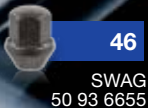
**44**

SWAG  
50 93 0249



**45**

SWAG  
50 93 2307





**66**

SWAG  
62 93 0400



**67**

SWAG  
62 93 2439



**68**

SWAG  
62 93 2440



**69**

SWAG  
62 93 2441



**70**

SWAG  
62 93 2442



**71**

SWAG  
62 93 2450



**72**

SWAG  
62 93 2451



**73**

SWAG  
70 91 0633



**74**

SWAG  
70 91 2706



**75**

SWAG  
70 91 2707



**76**

SWAG  
70 91 9335



**77**

SWAG  
70 91 9341



**78**

SWAG  
74 93 2438



**79**

SWAG  
80 91 1939



**80**

SWAG  
80 93 3499



**81**

SWAG  
81 92 6586



**82**

SWAG  
81 92 6587



**83**

SWAG  
81 92 6590



**84**

SWAG  
81 93 2060



**85**

SWAG  
81 93 3497



**86**

SWAG  
82 91 1938



**87**

SWAG  
83 93 4754



**88**

SWAG  
84 93 3926



**89**

SWAG  
84 93 3927



**90**

SWAG  
85 93 2479



**91**

SWAG  
99 90 1214



**92**

SWAG  
99 90 1471



**93**

SWAG  
99 90 1654



**94**

SWAG  
99 90 1849



**95**

SWAG  
99 90 3176



**96**

SWAG  
99 90 3556



**97**

SWAG  
99 90 4899



**98**

SWAG  
99 90 6963



**99**

SWAG  
99 90 7065



**100**

SWAG  
99 90 7066



**101**

SWAG  
99 90 8237



**102**

SWAG  
99 90 8476



**103**

SWAG  
99 90 9801



**104**

SWAG  
99 91 5655



**105**

SWAG  
99 99 0005



**106**SWAG  
50 94 6049

## Dimensions · Abmessungen

Photo	G	I	L	SW	Quality / Güte	Ke / Ku / Fb*	Surface / Oberfläche	VPE	SWAG no.	to fit / passend für	Ref. no. / Vergl.-Nr.
63	M12 x 1,25	17	52	19	10.9	Ke	zinc-plated / verzinkt	20	<b>62 91 1616</b>	Citroën / Peugeot	5405.55
65	M12 x 1,25	17	57	17	10.9	Fb	geomet	20	<b>62 92 9208</b>	Citroën / Peugeot Fiat	5405.67 9644576680
64	M12 x 1,25	18	47	17	10.9	Ke	dacromet	20	<b>62 92 1175</b>	Citroën / Peugeot Fiat	5405.66 9682405480
73	M12 x 1,25	22	40	19	8.8	Ke	dacromet	20	<b>70 91 0633</b>	Alfa-Romeo / Fiat / Lancia	13230024
77	M12 x 1,25	22	48,5	17	8.8	Ke	geomet	20	<b>70 91 9341</b>	Alfa-Romeo / Fiat / Lancia Ford Opel Vauxhall	11294235 1 559 373 1008 011 95510864
66	M12 x 1,25	24	49	17	10.9	Ke	geomet	20	<b>62 93 0400</b>	Citroën / Peugeot Fiat	16 087 344 80 9634648980

Photo	G	I	L	SW	Quality / Güte	Ke / Ku / Fb*	Surface / Oberfläche	VPE	SWAG no.	to fit / passend für	Ref. no. / Vergl.-Nr.
76	M12 x 1,25	27	42	19	8.8	Ke	dacromet	20	<b>70 91 9335</b>	Fiat	13228924
17	M12 x 1,5	14	46	15	10.9	Ku	corrolube	20	<b>12 92 7578</b>	Smart	000 990 56 07
102	M12 x 1,5	19	40	17	10.9	Ku	geomet	20	<b>99 90 8476</b>	Audi / Volkswagen Mercedes-Benz	321 601 139 000 990 45 07
84	M12 x 1,5	20	42	17	10.9	Ke	geomet	20	<b>81 93 2060</b>	Citroën / Peugeot Toyota	5405.77 90942-W2001
104	M12 x 1,5	20	61	17	10.9	Ku	dacromet	20	<b>99 91 5655</b>	Mercedes-Benz	000 990 48 07
3	M12 x 1,5	20	85	17	10.9	Ku	dacromet	20	<b>10 90 5123</b>	Mercedes-Benz	203 401 03 70
83	M12 x 1,5	21	59,5	17	10.9	Fb	dacromet	20	<b>81 92 6590</b>	Citroën / Peugeot Toyota	5405.80 90942-W2002
100	M12 x 1,5	22	47,5	17	10.9	Ke	zinc-plated / verzinkt	20	<b>99 90 7066</b>	Chevrolet / Daewoo Fiat Opel Suzuki Vauxhall	90092514 51732885 1 008 504 43423-86G00-000 90473457

61	M12 x 1,5	22	50,5	17	9.8	Ke	zinc-lamella coated / zinklamellenbeschichtet	20	<b>60 94 8925</b>	Renault / Dacia	77 03 003 008
105	M12 x 1,5	22	52	17	10.9	Ku	geomet	20	<b>99 99 0005</b>	Mercedes-Benz	126 401 06 70
57	M12 x 1,5	23	53	17	10.9	Ke	dacromet	20	<b>60 92 7756</b>	Renault / Dacia Nissan	82 00 473 353 ---
98	M12 x 1,5	24	45,5	17	8.8	Ku	yellow zinc-plated / gelbverzinkt	20	<b>99 90 6963</b>	Audi Seat / Volkswagen	3A0 601 139 3A0 601 139
62	M12 x 1,5	24	53	17	8.8	Ke	zinc-nickel-coated / Zink-Nickel-beschichtet	20	<b>60 94 6192</b>	Dacia / Renault	40 22 272 72R
99	M12 x 1,5	26	50	17	10.9	Ke	yellow zinc-plated / gelbverzinkt	20	<b>99 90 7065</b>	BMW MINI Nissan Renault / Dacia	36 13 1 126 191 36 13 0 141 576 --- 82 00 610 460
22	M12 x 1,5	26	50	17	10.9	Ke	corrolube	20	<b>20 91 8903</b>	BMW MINI	36 13 6 781 150 36 13 6 781 150
45	M12 x 1,5	26	46		10.9		dacromet	20	<b>50 93 2307</b>	Ford	1 473 166
37	M12 x 1,5	26	51	19	10.9	Ke	geomet	20	<b>50 90 3424</b>	Ford	6 069 623
55	M12 x 1,5	27	53	17	10.9	Ke	nitrified / nitriert	20	<b>60 93 6254</b>	Renault / Dacia	40 22 298 10R

Photo	G	I	L	SW	Quality / Güte	Ke / Ku / Fb*	Surface / Oberfläche	VPE	SWAG no.	to fit / passend für	Ref. no. / Vergl.-Nr.
80	M12 x 1,5	29,5	46,6		10.9		dacromet	20	<b>80 93 3499</b>	Citroën / Peugeot Mitsubishi Smart	3714.28 MB911495 454 350 01 35 S1
25	M12 x 1,5	22	46	17	10.9	Ku	zinc-plated / verzinkt	20	<b>30 94 5850</b>	Seat / Škoda Volkswagen	WHT 004 899 WHT 004 899
23	M14 x 1,25	30,5	46,3	17	8.8	Ke	corrolube	20	<b>20 92 6744</b>	BMW / MINI	36 13 6 781 151
26	M14 x 1,5	19	38	19	10.9	Ku	phosphated / phosphatiert	20	<b>32 90 1664</b>	Volkswagen	251 601 139
78	M14 x 1,5	19	51	17	10.9	Ke	geomet	20	<b>74 93 2438</b>	Alfa-Romeo	60694102
68	M14 x 1,5	19	53	24	10.9	Ke	geomet	20	<b>62 93 2440</b>	Citroën / Peugeot Fiat	5405.75 1345713080
16	M14 x 1,5	19	63	17	9.8	Ku	corrolube	20	<b>10 94 5757</b>	Mercedes-Benz	000 990 76 07
12	M14 x 1,5	19	68	0	10.9	Ku	corrolube	20	<b>10 92 9196</b>	Mercedes-Benz	000 990 54 07
67	M14 x 1,5	20	56,5	17	10.9	Ke	geomet	20	<b>62 93 2439</b>	Citroën / Peugeot Fiat	5405.68 1493974080

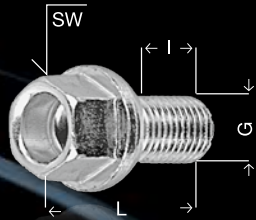
72	M14 x 1,5	20	57	17	10.9	Ke	geomet	20	<b>62 93 2451</b>	Citroën / Peugeot	5405.69
31	M14 x 1,5	20	61	19	10.9	Ku	geomet	20	<b>38 91 9656</b>	Porsche	997 361 203 01
24	M14 x 1,5	20	62	17	8.8	Ke	corrolube	20	<b>20 93 2292</b>	BMW	36 13 6 781 153
7	M14 x 1,5	20	70	17	10.9	Ku	dacromet	20	<b>10 91 4519</b>	Mercedes-Benz	000 990 53 07
8	M14 x 1,5	21	49	17	10.9	Ku	dacromet	20	<b>10 91 8913</b>	Mercedes-Benz	000 990 49 07
33	M14 x 1,5	21,5	60	17	10.9	Ku	geomet	20	<b>40 94 0606</b>	Audi	8R0 601 295
30	M14 x 1,5	22	51	17	8.8	Ku	black / schwarz	20	<b>32 92 3368</b>	Audi / Volkswagen	WHT 002 438
69	M14 x 1,5	22	62	21	10.9	Ke	geomet	20	<b>62 93 2441</b>	Citroën / Peugeot Fiat	5405.78 1363349080
94	M14 x 1,5	22	85	17	10.9	Ku	dacromet	20	<b>99 90 1849</b>	Mercedes-Benz	140 400 01 70
5	M14 x 1,5	22,5	74	19	10.9		dacromet	20	<b>10 90 9806</b>	Chrysler / Dodge Mercedes-Benz	05104018AA 638 401 01 71
59	M14 x 1,5	23	48	17	10.9	Ke		20	<b>60 93 6255</b>	Renault	82 00 620 058
60	M14 x 1,5	24	28	17	10.9	Ke	zinc-plated / verzinkt	20	<b>60 93 6293</b>	Renault	82 00 473 363
103	M14 x 1,5	24	48	17	8.8	Ku	zinc-plated / verzinkt	20	<b>99 90 9801</b>	Audi / Seat / Škoda Volkswagen	WHT 002 437 WHT 002 437
10	M14 x 1,5	24	51	17	10.9	Ku	geomet	20	<b>10 92 3933</b>	Mercedes-Benz	000 990 51 07
2	M14 x 1,5	25	45	17	8.8	Ku	Delta Protect	20	<b>10 90 5039</b>	Mercedes-Benz	140 401 02 70

Photo	G	I	L	SW	Quality / Güte	Ke / Ku / Fb*	Surface / Oberfläche	VPE	SWAG no.	to fit / passend für	Ref. no. / Vergl.-Nr.
4	M14 x 1,5	25	46	19	10.9	Ku	white zinc-plated / weißverzinkt	20	<b>10 90 9805</b>	Mercedes-Benz	638 401 02 71
75	M14 x 1,5	25	56	19	10.9	Ke	dacromet	20	<b>70 91 2707</b>	Fiat / Lancia Citroën / Peugeot	1476244080 5405.48
58	M14 x 1,5	26		19	10.9	Ke	chromed / verchromt	20	<b>60 92 7793</b>	Renault	82 00 426 593
56	M14 x 1,5	26		19	8.8	Ke	dacromet 500	20	<b>60 92 6747</b>	Nissan Opel Renault Vauxhall	40254-00QAF 4418 227 82 00 639 129 93858987
53	M14 x 1,5	27	57	19	10.9	Ke	zinc-plated / verzinkt	20	<b>55 92 1508</b>	Volvo	31423735
74	M14 x 1,5	30	52	22	8.8	Ke	dacromet	20	<b>70 91 2706</b>	Fiat Peugeot / Citroën	13229724 5405.30

95	M14 x 1,5	30	57		10.9		phosphated / phosphatiert	20	<b>99 90 3176</b>	Chrysler / Dodge Mercedes-Benz Volkswagen	05139905AA 309 401 02 71 2D0 501 627
11	M14 x 1,5	30	59	19	10.9	Ku	dacromet	20	<b>10 92 4645</b>	Chrysler / Dodge Mercedes-Benz	05104080AA 901 401 00 70
29	M14 x 1,5	30	66	19	10.9	Ku	geomet	20	<b>32 92 1588</b>	Audi / Volkswagen	WHT 002 529
14	M14 x 1,5	30,7	46,1	17	10.9	Ku	phosphated / phosphatiert	20	<b>10 93 8021</b>	Mercedes-Benz	000 990 83 07
27	M14 x 1,5	32	58	19	10.9	Ku	phosphated / phosphatiert	20	<b>32 90 4912</b>	Ford Seat / Volkswagen	7 201 016 701 601 139 B
101	M14 x 1,5	32	62	19	10.9	Ku	zinc-plated / verzinkt	20	<b>99 90 8237</b>	Mercedes-Benz Volkswagen	601 401 02 70 2D0 601 139
13	M14 x 1,5	32	58	19	10.9	Ku	dacromet	24	<b>10 92 9466</b>	Chrysler / Dodge Mercedes-Benz Volkswagen	68006805AA 000 990 24 07 WHT 000 888
92	M14 x 1,5	32	68		10.9		phosphated / phosphatiert	20	<b>99 90 1471</b>	Dodge Mercedes-Benz	05103938AA 309 402 02 71

Photo	G	I	L	SW	Quality / Güte	Ke / Ku / Fb*	Surface / Oberfläche	VPE	SWAG no.	to fit / passend für	Ref. no. / Vergl.-Nr.
21	M14 x 1,5	33	55	17	10.9	Ke	phosphated / phosphatiert	20	<b>20 91 8538</b>	BMW	36 13 6 781 152
28	M14 x 1,5	34	62	19	10.9	Ku	geomet	20	<b>32 91 7818</b>	Ford Seat / Volkswagen	1 126 877 7M3 601 139 B
71	M16 x 1,5	23	57	24	10.9	Ke	geomet	20	<b>62 93 2450</b>	Citroën / Peugeot Fiat	5405.76 1345714080
70	M16 x 1,5	25	64	21	10.9	Ke	geomet	20	<b>62 93 2442</b>	Citroën / Peugeot Fiat	5405.79 13512 03080
93	M18 x 1,5	30	68		10.9		phosphated / phosphatiert	20	<b>99 90 1654</b>	Mercedes-Benz	314 402 00 71 S1
6	M18 x 1,5	30	68		10.9		dacromet	20	<b>10 91 2862</b>	Mercedes-Benz	314 402 00 71





- \*) Ku = Kugelbund/Spherical Collar,  
Ke = Kegelbund/Conical Seat,  
Fb = Flachbund/Flat Collar

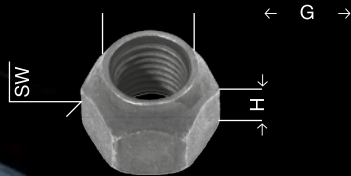
Photo	G	H	SW	Quality / Güte	Ke / Ku / Fb*	Surface / Oberfläche	VPE	SWAG no.	to fit / passend für	Ref. no. / Vergl.-Nr.
86	M12 x 1,25	16	21	6	Ke	yellow zinc-plated / gelbverzinkt	20	<b>82 91 1938</b>	Nissan Smart	40224-21001 454 402 00 72
88	M12 x 1,25	17	19	8	Ke	zinc-plated / verzinkt	20	<b>84 93 3926</b>	Nissan Opel Vauxhall Suzuki	36181-4A0A2 4705 171 09207055 09140-12042-000
18	M12 x 1,25	23	17	8	Ke	zinc-plated / verzinkt	20	<b>13 93 3925</b>	Chevrolet / Daewoo	94515470
89	M12 x 1,25	30	19	8	Ke	zinc-plated / verzinkt	20	<b>84 93 3927</b>	Suzuki	09159-12057-000
42	M12 x 1,5	15	19	10	Ke	magni	20	<b>50 92 7413</b>	Ford Volvo	1 470 843 999359
48	M12 x 1,5	15	19	10	Ke	zinc-nickel / Zink-Nickel	20	<b>50 94 0247</b>	Ford	5 114 405
79	M12 x 1,5	17	21	8	Ke	yellow zinc-plated / gelbverzinkt	20	<b>80 91 1939</b>	Citroën / Peugeot Hyundai / Kia Mazda	5405.81 52951-11210 0603-26-161A

79	M12 x 1,5	17	21	8	Ke	yellow zinc-plated / gelbverzinkt	20	<b>80 91 1939</b>	Mitsubishi Smart Toyota / Lexus / Scion Volvo	MR297927 454 402 00 72 90942-01007 30873148
90	M12 x 1,5	18	19	8	Ku	white zinc-plated / weißverzinkt	20	<b>85 93 2479</b>	Honda	90381-SL5-901
1	M12 x 1,5	18,5	17	8	Ku	zinc-plated / verzinkt	20	<b>10 90 3857</b>	Mercedes-Benz	110 990 00 59
32	M12 x 1,5	23	19	10	Ke	zinc-plated / verzinkt	20	<b>40 93 8008</b>	Opel Vauxhall	1008 010 09598799
35	M12 x 1,5	23	19	8	Ke	geomet	20	<b>40 94 5788</b>	Buick Opel Vauxhall	09594681 1008 516 09594681
19	M12 x 1,5	25	19	8	Ke	zinc-plated / verzinkt	20	<b>13 93 3928</b>	Chevrolet / Daewoo	94515412
44	M12 x 1,5	26,5	19	10	Ke	phosphated / phosphatiert	20	<b>50 93 0249</b>	Ford	1 454 053
39	M12 x 1,5	27,5	19	8	Ke	zinc-plated / verzinkt	20	<b>50 90 7176</b>	Ford	1 366 432
87	M12 x 1,5	29,3	21	8	Ke	chromed / verchromt	20	<b>83 93 4754</b>	Mazda	B002-37-160B

Photo	G	H	SW	Quality / Güte	Ke / Ku / Fb*	Surface / Oberfläche	VPE	SWAG no.	to fit / passend für	Ref. no. / Vergl.-Nr.
20	M12 x 1,5	30	19	8	Ke	zinc-plated / verzinkt	20	<b>20 90 3375</b>	BMW Chevrolet / Daewoo Opel Vauxhall	36 13 1 113 132 94837389 4803 304 94837389
43	M12 x 1,5	31	19	10	Ke	chromed / verchromt	20	<b>50 92 9463</b>	Ford Volvo	1 678 260 31329645
49	M12 x 1,5	31	19	10	Ke	chromed / verchromt		<b>50 94 4949</b>	Ford	5 114 407
46	M12 x 1,5	32	19	10	Ke	zinc-plated / verzinkt	20	<b>50 93 6655</b>	Ford	1 462 130
36	M12 x 1,5	36	19	10	Ke	geomet	20	<b>40 94 5789</b>	Buick Opel Vauxhall	09594682 1008 013 09594682
82	M12 x 1,5	37,5	21	8	Ke	chromed / verchromt	20	<b>81 92 6587</b>	Citroën / Peugeot Hyundai / Kia Toyota / Lexus / Scion Mitsubishi	5405.82 52950-37000 90942-01033 MR455707

81	M12 x 1,5	47,5	21	8	Ke	chromed / verchromt	20	<b>81 92 6586</b>	Toyota / Lexus	90942-01058
40	M14 x 1,5	15	21	10	Ke	zinc-plated / verzinkt	20	<b>50 92 6102</b>	Ford	1 377 748
96	M14 x 1,5	16	19	10	Fb	phosphated / phosphatiert	100	<b>99 90 3556</b>	Volkswagen	N 020 115 3
9	M14 x 1,5	16	19	10	Fb	geomet	20	<b>10 92 2474</b>	Chrysler / Dodge Mercedes-Benz	05104651AA 074361 014205
15	M14 x 1,5	18	19	10	Fb	geomet	24	<b>10 94 4869</b>	Crafter Mercedes-Benz	WHT 000 889 000 401 18 72
91	M14 x 1,5	20	19	8	Ku	phosphated / phosphatiert	20	<b>99 90 1214</b>	Porsche / Volkswagen	N 020 112 1
34	M14 x 1,5	20,5	22	9	Ke	blue zinc-plated / blau verzinkt	20	<b>40 94 5063</b>	Saab Opel Vauxhall	95 98 117 60008 963 09598177
50	M14 x 1,5	25	21	10	Fb	Zinklad	20	<b>50 94 9071</b>	Ford	1 811 812
106	M14 x 1,5	31	21	10	Ke	zinc-nickel-coated / Zink Nickel beschichtet	20	<b>50 94 6049</b>	Ford	1 763 869

Photo	G	H	SW	Quality / Güte	Ke / Ku / Fb*	Surface / Oberfläche	VPE	SWAG no.	to fit / passend für	Ref. no. / Vergl.-Nr.
41	M14 x 1,5	34	21	10	Ke	chromed / verchromt	20	<b>50 92 6287</b>	Ford	1 676 176
52	M14 x 1,5	37	21	10	Ke	zinc-nickel-coated / Zink Nickel beschichtet	20	<b>50 94 9073</b>	Ford	5 275 544
51	M14 x 1,5	42,5	21	10	Ke	zinc-nickel-coated / Zink Nickel beschichtet	20	<b>50 94 9072</b>	Ford	5 196 786
85	M14 x 1,5	46,5	22	8	Ke	chromed / verchromt	20	<b>81 93 3497</b>	Toyota / Lexus	90942-01103
47	M14 x 2	24,5	21	10	Fb	zinc-plated / verzinkt	20	<b>50 93 9371</b>	Ford	1 576 434
38	M16 x 1,5	22,5	24	8	Ku	phosphated / phosphatiert	20	<b>50 90 6218</b>	Ford	6 119 808
97	M18 x 1,5	25	27	10	Fb	phosphated / phosphatiert	20	<b>99 90 4899</b>	Iveco Volkswagen	5 0435 6518 N 020 116 1



\*) Ku = Kugelbund/Spherical Collar,  
Ke = Kegelbund/Conical Seat,  
Fb = Flachbund/Flat Collar



Locking wheel bolts  
Radsicherungsschrauben

Locking wheel nuts  
Radsicherungsmuttern

Sample picture / Beispielfoto

## Please note:

- Comparing locking wheel fastener with original part before installation
- Locking wheel fastener must engage with hub at least 5.5 thread turns
- Do not use any electrical or compressed air tightening devices
- Please follow the tightening torque specifications of the vehicle manufacturer
- Check for unrestricted rotation of the wheels whilst the car is lifted

## Bitte beachten:

- Radsicherungsschraube / -mutter vor Einbau mit dem Originalteil vergleichen
- Radsicherungsschraube / -mutter muss sich mindestens 5,5 Gewindegänge / Umdrehungen einschrauben lassen
- Zum Festziehen keine elektrischen oder druckluftbetriebenen Geräte verwenden
- Anzugsdrehmoment des Fahrzeugherstellers beachten
- Im angehobenen Zustand des Fahrzeugs die Freigängigkeit der Räder überprüfen



SWAG no.	Ref. no. / Vergleichs-Nr.	thread size / Gewindebezeichnung	thread length / Gewindelänge	collar shape / Kopfform
<b>10 92 8452</b>	V 238	M12 x 1,50	38 mm	spherical / Kugelbund
<b>12 92 7497</b>	000 990 60 07	M12 X 1,50	17 mm	spherical / Kugelbund
<b>20 92 7047</b>	B 123	M12 x 1,50	23 mm	conical / Kegelbund 60°
<b>20 92 7049</b>	B 130	M12 x 1,50	30 mm	conical / Kegelbund 60°
<b>20 92 7055</b>	B 430	M14 x 1,50	29 mm	conical / Kegelbund 60°
<b>20 94 7550</b>	36 13 6 792 851	M14 X 1,25	23 mm	conical / Kegelbund
<b>30 92 7048</b>	B 225	M12 x 1,50	25 mm	spherical / Kugelbund
<b>30 92 7056</b>	B 529	M14 x 1,50	29 mm	spherical / Kugelbund
<b>60 92 7054</b>	B 425	M14 x 1,50	25 mm	conical / Kegelbund 60°
<b>62 92 7053</b>	BR 25	M12 x 1,25	34 mm	flat / Flach
<b>70 92 7051</b>	B 323	M12 x 1,25	23 mm	conical / Kegelbund 60°
<b>70 92 7052</b>	B 330	M12 x 1,25	30 mm	conical / Kegelbund 60°
<b>81 92 7057</b>	M 115	M12 x 1,50	-	conical / Kegelbund 60°
<b>82 92 7058</b>	M 215	M12 x 1,25	-	conical / Kegelbund 60°



SWAG 70 91 0633



SWAG 70 91 9341



SWAG 74 93 2438



SWAG 99 90 6963



SWAG 99 90 8476



SWAG 99 90 9801

to fit / passend für			Ref. no. / Vergl.-Nr.	SWAG no.	Remarks / Anmerkungen
<b>ALFA ROMEO</b>					
145	97 → 00 1,4 / 1,6 / 1,9TD	steel rim / Stahlfelge	13230024	<b>70 91 0633</b>	M12 x 1,25 x 22/40
146	97 → 00 1,4 / 1,6 / 1,9TD	steel rim / Stahlfelge	(60811414)		SW 19 / G 8.8 / Ke / dacromet
156	97 →	steel rim / Stahlfelge			
147	01 →	steel, Stahl / Alu	11294235	<b>70 91 9341</b>	M12 x 1,25 x 22/48,5
156	97 → 02 (ch.) 0418001 →	steel, Stahl / Alu	(13230425)		SW 17 / G 8.8 / Ke / dacromet
156	02 → (ex.) Sport-Kit / 4x4	alloy rim / Alufelge	(13230435)		
166	98 →	steel rim / Stahlfelge			
GT	03 →	alloy rim / Alufelge			

Mito	08 →	steel, Stahl / Alu	11294235 (13230425) (13230435)	<b>70 91 9341</b>	M12 x 1,25 x 22/48,5 SW 17 / G 8.8 / Ke / dacromet
159	05 →	steel, Stahl / Alu	60694102	<b>74 93 2438</b>	M14 x 1,5 x 19/51 SW 17 / G 10.9 / Ke / geomet
Brera	05 →	steel, Stahl / Alu	(60697442)		
Spider	06 →	steel, Stahl / Alu			
<b>AUDI</b>					
Audi 50	74 → 78 all / alle	steel rim / Stahlfelge	321 601 139	<b>99 90 8476</b>	M12 x 1,5 x 19/40 SW 17 / G 10.9 / Ku / geomet
Audi Coupe / Quattro	80 → 88 → (ch.) 85-B-200 000	steel rim / Stahlfelge			
Audi 80	81	steel, Stahl	3A0 601 139	<b>99 90 6963</b>	M12 x 1,5 x 24/45,5 SW 17 / G 8.8 / Ku yellow zinc-plated gelbverzinkt
Audi 80	82 → 87	steel, Stahl / Alu	(321 601 139 C)		
Audi Coupe GL	81 → 88	steel, Stahl			
Audi A2	00 → 05	alloy / Alu 14"			
Audi 90	85 → 87	steel, Stahl / Alu	WHT 002 437	<b>99 90 9801</b>	M14 x 1,5 x 26/48 SW 17 / G 8.8 / Ku silver / silber
Audi 80 / 90	88 → 96	steel, Stahl / Alu	(431 601 139 A)		
Audi 100	80 → 94	steel, Stahl / Alu	(443 601 139 A)		
Audi 200	80 → 91	steel, Stahl / Alu	(443 601 139 C)		
Audi A1	10 →	steel, Stahl / Alu	(8D0 601 139 A)		
Audi A2	00 → 05	steel, Stahl / Alu 15/16/17"	(8D0 601 139 D)		



SWAG 20 90 3375



SWAG 32 92 1588



SWAG 32 92 3368



SWAG 40 94 0606



SWAG 99 90 9801

to fit / passend für		Ref. no. / Vergl.-Nr.	SWAG no.	Remarks / Anmerkungen
<b>AUDI</b>				
Audi A3 / Sportback	97 →	steel, Stahl / Alu	WHT 002 437	<b>99 90 9801</b> M14 x 1,5 x 26/48 SW 17 / G 8.8 / Ku silver / silber
Audi A3 Cabriolet	08 →	steel, Stahl / Alu	(431 601 139 A)	
Audi A4 / Avant	95 →	steel, Stahl / Alu	(443 601 139 A)	
Audi A5 / Sportback / Cabrio	08 →	steel, Stahl / Alu	(443 601 139 C)	
Audi A6 / Avant	95 → 05	steel, Stahl / Alu	(8D0 601 139 A)	
Audi A6 / Avant	05 →	alloy / Alu	(8D0 601 139 D)	
Audi A7 Sportback	10 →	alloy / Alu		
Audi A8	94 → 03	steel, Stahl / Alu		

Audi Cabriolet	92 → 00	steel, Stahl / Alu	WHT 002 437	<b>99 90 9801</b>	M14 x 1,5 x 26/48 SW 17 / G 8.8 / Ku silver / silber
Audi Coupe	81 → 88	steel, Stahl / Alu	(431 601 139 A)		
Audi Coupe	89 → 96	steel, Stahl / Alu	(443 601 139 A)		
Audi TT	99 → 02	steel, Stahl / Alu	(443 601 139 C)		
Audi TT / TTRS	07 →	alloy / Alu	(8D0 601 139 A)		
Audi V8	89 → 94	steel, Stahl / Alu	(8D0 601 139 D)		
Audi A6 quattro V8	98 → 01 (ch.) 4B-1-011023 →	alloy / Alu	WHT 002 438	<b>32 92 3368</b>	M14 x 1,5 x 35/51 SW 17 / G 8.8 / Ku black / schwarz
Audi A8 quattro	99 → 03 (ch.) 4D-1-001501 →	steel, Stahl / Alu	(4D0 601 137)		
Audi S5	08 →	alloy / Alu	(4D0 601 139 A)		
Audi TT quattro	99 → 06 (ch.) 8N-1-039001 →	alloy / Alu			
Audi A8 Quattro	01/2011 → PR-F4S	alloy / Alu	8R0 601 295	<b>40 94 0606</b>	M 14 x 1,5 x 21,5/45 G 10.9 / Ku / geomet silver / silber
Audi Q3 / Quattro	06/2011 →	alloy / Alu			
Audi Q5 / Quattro	11/2008 →	alloy / Alu			
Q7	07 →	alloy / Alu 18"/19"/20"/21"	WHT 002 529 (7L0 601 139 A)	<b>32 92 1588</b>	M14 x 1,5 x 36/66 SW 19 / G 10.9 / Ku / dacromet
<b>BMW</b>					
518, 520-4/i, 525, 528 1502 → 2002 Turbo 2500 → 3.3 Li	E 12 → 02.76	steel, Stahl / Alu steel, Stahl / Alu steel, Stahl / Alu	36 13 1 113 132	<b>20 90 3375</b>	M12 x 1,5 H 30 / SW 19 / G 10 / Ke zinc-plated / verzinkt



SWAG 20 91 8903



SWAG 99 90 7065

to fit / passend für			Ref. no. / Vergl.-Nr.	SWAG no.	Remarks / Anmerkungen
<b>BMW</b>					
118 d → 135 i	E 81 / E 82	steel, Stahl / Alu	36 13 1 126 191	<b>99 90 7065</b>	M12 x 1,5 x 26/50
116 i → 135 i	E 87 / E 88	steel, Stahl / Alu	(36 13 1 117 191)		SW 17 / G 10.9 / Ke
315 → 323 i	E 21	steel, Stahl / Alu	(36 13 1 118 949)		yellow zinc-plated /
316 → 325 iX	E 30	steel, Stahl / Alu	(36 13 1 123 585)		gelbverzinkt
316 i → M 3	E 36	steel, Stahl / Alu			
316 i → M 3	E 46	steel, Stahl / Alu	36 13 6 781 150	<b>20 91 8903</b>	M12 x 1,5 x 26/50
316 i → 335 xi	E 90	steel, Stahl / Alu	(36 13 1 095 390)		SW 17 / G 10.9 / Ke /
320 d → 335 xi	E 91	steel, Stahl / Alu	(36 13 1 122 158)		corrolube

320 d → M 3	E 92	steel, Stahl / Alu	36 13 6 781 150	<b>20 91 8903</b>	M12 x 1,5 x 26/50 SW 17 / G 10.9 / Ke / corrolube
320 i → 335 i	E 93	steel, Stahl / Alu	(36 13 1 095 390)		
518 i → 528/i	E 12 02.76 →	steel, Stahl / Alu	(36 13 1 122 158)		
518 i → M 535 iK	E 28	steel, Stahl / Alu	(36 13 1 126 014)		
518 i → M 5	E 34	steel, Stahl / Alu			
520 d → M 5	E 39	steel, Stahl / Alu			
520 i → M 5	E 60	steel, Stahl / Alu			
520 d → 550 i touring	E 61	steel, Stahl / Alu			
628 CSi → 635 CSi	E 24	steel, Stahl / Alu			
630 i → M 6	E 63	steel, Stahl / Alu			
630 Ci → M 6	E 64	steel, Stahl / Alu			
728 → 733 i	E 23	steel, Stahl / Alu			
730 i → 750 i/iL	E 32	steel, Stahl / Alu			
725 tds → 750 i/iL	E 38	steel, Stahl / Alu			
840 Ci → 850 CSi	E 31	steel, Stahl / Alu			
X1	E 84	steel, Stahl / Alu			
Z1 / Z3		steel, Stahl / Alu			
Z4 I / II		steel, Stahl / Alu			
Z8		steel, Stahl / Alu			



SWAG 13 93 3925



SWAG 20 90 3375



SWAG 20 91 8538



SWAG 20 92 6744



SWAG 20 93 2292



SWAG 40 94 5788



SWAG 40 94 5789

to fit / passend für			Ref. no. / Vergl.-Nr.	SWAG no.	Remarks / Anmerkungen
<b>BMW</b>					
730 d → 760 i	E 65	alloy rim / Alufelge	36 13 6 781 152	<b>20 91 8538</b>	M14 x 1,5 x 33/55
735 Li → 760 Li	E 66	alloy rim / Alufelge	(36 13 6 754 067)		SW 17 / G 10.9 / Ke
X3 I 2,0 d → 3,0 Si / LCI	E 83	alloy rim / Alufelge	(36 13 6 758 730)		phosphated / phosphatiert
X5 I 3,0 d/i → 4,8 iS	E 53 12/05 →	alloy rim / Alufelge	36 13 6 781 153 (36 13 6 771 035)	<b>20 93 2292</b>	M14 x 1,5 x 20/44/62 SW 17 / G 8.8 / Ke / corrolube
X3 II / X5 II	F25/LCI / E70/LCI	steel, Stahl / Alu	36 13 6 781 151	<b>20 92 6744</b>	M14 x 1,25 x 30,5/48,5
X6 / Hybrid	E71 / E72 F07 GT/LCI	steel, Stahl / Alu steel, Stahl / Alu	(36 13 6 774 896)		SW 17 / G 8.8 / Ke / corrolube



1'er	F10/LCI / F11/LCI / F12 / F13	steel, Stahl / Alu	36 13 6 781 151	<b>20 92 6744</b>	M14 x 1,25 x 30,5/48,5 SW 17 / G 8.8 / Ke / corrolube
2'er	F01/LCI / F02/LCI / F04 / F06	steel, Stahl / Alu	(36 13 6 774 896)		
3'er	F20 / F21	steel, Stahl / Alu			
4'er	F22	steel, Stahl / Alu			
5'er	F30 / F31 / F34	steel, Stahl / Alu			
X5 III	F32 / F33	steel, Stahl / Alu			
	F18	steel, Stahl / Alu			
	F15	steel, Stahl / Alu			
<b>BUICK</b>					
Encore	09/12 →	steel rim / Stahlfelge	09594681	<b>40 94 5788</b>	M12 x 1,5 H 23 SW 19 / G 8 / Ke / geomet
Encore	09/12 →	alloy rim / Alufelge	09594682 (09598708)	<b>40 94 5789</b>	M12 x 1,5 H 36 SW 19 / Ke / geomet
<b>CHEVROLET</b>					
Matiz	03/05 →	steel rim / Stahlfelge	94515470	<b>13 93 3925</b>	M12 x 1,25 x 23 / SW 17/G 8 Ke / zinc-plated / verzinkt
Spark	03/05 →	steel rim / Stahlfelge			
Aveo	03/05 →	alloy rim / Alufelge	94837389	<b>20 90 3375</b>	M12 x 1,5
Captiva	06/06 →	alloy rim / Alufelge			H 30 / SW 19 / G 10 / Ke
Epica	01/05 →	alloy rim / Alufelge			zinc-plated / verzinkt



SWAG 13 93 3928



SWAG 20 90 3375



SWAG 62 91 1616



SWAG 62 92 9208



SWAG 80 91 1939



SWAG 81 92 6587

to fit / passend für			Ref. no. / Vergl.-Nr.	SWAG no.	Remarks / Anmerkungen
<b>CHEVROLET</b>					
Evanda	03/05 →	alloy rim / Alufelge	94837389	<b>20 90 3375</b>	M12 x 1,5
Lacetti / Nubira	03/05 →	alloy rim / Alufelge			H 30 / SW 19 / G 10 / Ke
Rezzo	03/05 →	alloy rim / Alufelge			zinc-plated / verzinkt
Spark	03/10 →	alloy rim / Alufelge			
Tacuma	03/05 →	alloy rim / Alufelge			
Aveo	03/05 →	steel rim / Stahlfelge	94515412	<b>13 93 3928</b>	M12 x 1,5
Epica	01/05 →	steel rim / Stahlfelge	(94515402)		H 25 / SW 19 / G 8 / Ke
Evanda	03/05 →	steel rim / Stahlfelge			

Lacetti / Nubira	03/05 →	steel rim / Stahlfelge	94515412	<b>13 93 3928</b>	M12 x 1,5
Rezzo / Tacuma	03/05 →	alloy rim / steel rim +	(94515402)		H 25 / SW 19 / G 8 / Ke
Vivant	03/05 →	Alufelge / Stahlfelge			
<b>CITROËN</b>					
AX		alloy rim / Alufelge	5405.55	<b>62 91 1616</b>	M12 x 1,25 x 26/52
Berlingo	96 → 08/02 → O 09428	steel rim / Stahlfelge	(5405.59)		SW 19 / G 10.9 / Ke
C3	02 → 08/02 → O 09428	steel rim / Stahlfelge			zinc-plated / verzinkt
C15		4-hole steel rim / 4-loch Stahlfelge			
Saxo	96 → 08/02 → O 09428	steel rim / Stahlfelge			
Xantia Xsara/Picasso	→ 08/02 O 09428	steel rim / Stahlfelge steel rim / Stahlfelge			
C4 Aircross	04/12 →	steel rim / Stahlfelge	5405.81	<b>80 91 1939</b>	M12 x 1,5 x 17
C-Crosser	02/07 →	steel rim / Stahlfelge			SW 21 / G 8 / Ke
C-Zero	10/10 →	steel rim / Stahlfelge			yellow zinc-plated/gelbverzinkt
C4 Aircross	04/12 →	alloy rim / Alufelge	5405.82	<b>81 92 6587</b>	M12 x 1,5 x 37,5 SW 21/G 8/
C-Crosser	02/07 →	alloy rim / Alufelge			Ke / chromed / verchromt
Berlingo	07/96 → 11/02 / O 08576 →	alloy rim / Alufelge	5405.67	<b>62 92 9208</b>	M12 x 1,25 x 17/57,15
Berlingo (M59)	07/96 → 11/02	alloy rim / Alufelge			SW 17 / G 10.9 / Fb / geomet



SWAG 62 92 9208



SWAG 62 93 0400

to fit / passend für			Ref. no. / Vergl.-Nr.	SWAG no.	Remarks / Anmerkungen
<b>CITROËN</b>					
Berlingo (B9)	04/08 →		5405.67	<b>62 92 9208</b>	M12 x 1,25 x 17/57,15
C2	09/03 → 03/10	14", 15", 16" inch/Zoll			SW 17 / G 10.9 / Fb / geomet
C3	02/02 → 01/05	alloy rim / Alufelge			
C3 (A51)	11/09 →	15", 16", 17" inch/Zoll			
C3 II	02/05 → 10/09	alloy rim / Alufelge			
C3 Picasso	02/09 →	alloy rim / Alufelge			
C3 Pluriel	05/03 → 07/10	alloy rim / Alufelge			
C4	11/04 → 10/09	alloy rim / Alufelge			

C4 (B7)	11/09 →	16", 17", 18", 19" inch/Zoll	5405.67	<b>62 92 9208</b>	M12 x 1,25 x 17/57,15 SW 17 / G 10.9 / Fb / geomet
C4 Picasso	02/07 → 01/13	alloy rim / Alufelge			
C4 Picasso II (B78)	02/13 →	alloy rim / Alufelge			
C5	03/01 → 08/04	alloy rim / Alufelge			
C5 (X7)	02/08 →	16", 17", 18", 19" inch/Zoll			
C5 II	09/04 → 01/08	alloy rim / Alufelge			
C6	03/01 → 08/04	alloy rim / Alufelge			
C-Elysee	11/12 →	alloy rim / Alufelge			
DS3	04/10 → (mot.) EP6DTS	16", 17", 18" inch/Zoll			
DS4	01/11 →	16", 17", 18", 19" inch/Zoll			
DS5	08/11 →	alloy rim / Alufelge			
Jumpy III	01/07 →	alloy rim / Alufelge			
Saxo	02/96 → 04/04 / O 08576 →				
Xsara Picasso	12/99 →	alloy rim / Alufelge			
Xsara II	10/97 → 08/05	alloy rim / Alufelge			
Berlingo	08 →	steel rim / Stahlfelge	16 087 344 80	<b>62 93 0400</b>	M12 x 1,25 x 24/49 SW 17 / G 10.9 / Ke / geomet
C4 (incl. Picasso)	04 →	steel rim / Stahlfelge	(5405.72)		
C5 I + II	01 → 08	steel rim / Stahlfelge			
C5 III	08 →	steel rim / Stahlfelge 16"			
Jumpy III	07 →	steel rim / Stahlfelge			



SWAG 62 92 1175



SWAG 80 93 3499



SWAG 81 92 6590



SWAG 81 93 2060

to fit / passend für			Ref. no. / Vergl.-Nr.	SWAG no.	Remarks / Anmerkungen
<b>CITROËN</b>					
Berlingo I	07/96 → 11/02 / O 09429 →	steel rim / Stahlfelge	5405.66	<b>62 92 1175</b>	M12 x 1,25 x 18/47
Berlingo II	12/02 → 03/08	steel rim / Stahlfelge	(5405.84)		SW 17 / G 10.9 / Ke/dacromet
Berlingo III	04/08 →	steel rim / Stahlfelge			
C2	09/03 → 03/10	steel rim / Stahlfelge			
C3 I	02/02 → 01/05 / O 09429 →	steel rim / Stahlfelge			
C3 II	02/05 → 10/09	steel rim / Stahlfelge			
C3 (A51)	11/09 →	steel rim / Stahlfelge			
C3 Picasso	02/09 →	steel rim / Stahlfelge			

C3 Pluriel	05/03 → 07/10	steel rim / Stahlfelge	5405.66	<b>62 92 1175</b>	M12 x 1,25 x 18/47 SW 17 / G 10.9 / Ke/dacromet
C4	11/04 → 10/09 / → O 10261	steel rim / Stahlfelge 15"	(5405.84)		
C4 Picasso II (B78)	02/13 →	steel rim / Stahlfelge (ex.) 18"			
C6	09/05 →	steel rim / Stahlfelge			
C15	10/84 → 12/05 (mot.) XUD7/DW8B	steel rim / Stahlfelge			
C-Elysee	11/12 →	steel rim / Stahlfelge			
DS3	04/10 →	steel rim / Stahlfelge			
Jumpy III	01/07 → / O 11305 →	steel rim / Stahlfelge			
Saxo	02/96 → 04/04 / O 09429 →	steel rim / Stahlfelge			
Xsara Picasso	12/99 → / O 09435 →	steel rim / Stahlfelge			
Xsara II	10/97 → 08/05 / O 09429 →	steel rim / Stahlfelge			
C1	05 →	steel rim / Stahlfelge	5405.77	<b>81 93 2060</b>	M12 x 1,5 x 20/42 SW 17 / G 10.9 / Ke / geomet
C1	05 →	alloy rim / Alufelge	5405.80	<b>81 92 6590</b>	M12 x 1,5 x 21/59,5 SW 17 / G 10.9 / Ke /dacromet
C4 Aircross	04/12 →		3714.28	<b>80 93 3499</b>	M12 x 1,5 x 29,5/40/46,6 G 10.9 / dacromet
C-Crosser	02/07 →				
C-Zero	10/10 →				



SWAG 60 93 6254



SWAG 62 93 2440



SWAG 62 93 2441



SWAG 62 93 2450



SWAG 70 91 2706



SWAG 60 92 7756



SWAG 62 93 2439



SWAG 62 93 2442



SWAG 62 93 2451



SWAG 70 91 2707



SWAG 99 90 7065

to fit / passend für			Ref. no. / Vergl.-Nr.	SWAG no.	Remarks / Anmerkungen
<b>CITROËN</b>					
C8	02 → / → O 9435	steel rim / Stahlfelge	5405.48	<b>70 91 2707</b>	M14 x 1,5 x 25/52
Evasion	94 → 02	steel rim / Stahlfelge			SW 19 / G 8.8 / Ke / dacromet
Jumpy I + II	95 → 07 / → O 9428	steel rim / Stahlfelge			
C8	02 → / O 9436 → 09988	steel rim / Stahlfelge	5405.68	<b>62 93 2439</b>	M14 x 1,5 x 20/56,5
Jumpy I + II	95 → 07 / O 9429 →	steel rim / Stahlfelge			SW 17 / G 10.9 / Ke / geomet
C8	02 → / O 9989 → 02 → / O 9436 →	steel rim / Stahlfelge alloy rim / Alufelge	5405.69	<b>62 93 2451</b>	M14 x 1,5 x 20/57 SW 17 / G 10.9 / Ke / geomet
C25		steel rim / Stahlfelge	5405.30	<b>70 91 2706</b>	M14 x 1,5 x 30/52 SW 22 / G 8.8 / Ke / dacromet



Jumper I + II	94 → 06 payload / Nutzlast 1,8t	steel rim / Stahlfelge	5405.76	<b>62 93 2450</b>	M16 x 1,5 x 23/57 SW 24 / G 10.9 / Ke / geomet
Jumper I + II	94 → 06, payload / Nutzlast 1,0t + 1,4t	steel rim / Stahlfelge	5405.75	<b>62 93 2440</b>	M14 x 1,5 x 19/53 SW 24 / G 10.9 / Ke / geomet
Jumper III	06 → payload / Nutzlast 1,2t → 1,6t	steel rim / Stahlfelge alloy rim / Alufelge Alu 15"	5405.78 (5405.88)	<b>62 93 2441</b>	M14 x 1,5 x 22/62 SW 21 / G 10.9 / Ke / geomet
Jumper III	06 → payload / Nutzlast 1,6t →	steel rim / Stahlfelge alloy rim / Alufelge Alu 16"	5405.79	<b>62 93 2442</b>	M16 x 1,5 x 25/64 SW 21 / G 10.9 / Ke / geomet
<b>DACIA</b>					
Duster	08 →	steel rim / Stahlfelge	82 00 610 460	<b>99 90 7065</b>	M12 x 1,5 x 26/50
Logan	04 →	steel rim / Stahlfelge	(82 00 473 313)		SW 17 / G 10.9 / Ke
Sandero	08 →	steel rim / Stahlfelge			yellow zinc-plated/gelbverzinkt
Logan	04 →	alloy rim / Alufelge	82 00 473 353	<b>60 92 7756</b>	M12 x 1,5 x 23
Sandero	08 →	alloy rim / Alufelge	(82 00 025 716)		SW 17 / G 10.9 / Ke /
			(82 00 294 820)		dacromet
			(82 00 623 085) (82 00 473 425)		
Duster	10 →	alloy rim / Alufelge	40 22 298 10R	<b>60 93 6254</b>	M12 x 1,5 27/53 SW 17 / G 10.9 / Ke



SWAG 13 93 3925



SWAG 13 93 3928



SWAG 20 90 3375



SWAG 60 94 8925



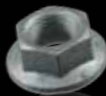
SWAG 60 94 6192

to fit / passend für		Ref. no. / Vergl.-Nr.	SWAG no.	Remarks / Anmerkungen
<b>DACIA</b>				
Duster	10 →	77 03 003 008	<b>60 94 8925</b>	M12 x 1,5 x 50,5 SW 17 / G 9.8 / Ke zinc-lamella coated / zinklamellenbeschichtet
Dokker	11/12 →			
Loggy	03/12 →			
Logan I	04 → 15 inch/Zoll			
Logan II	13 →			
Sandero I	06/08 → 15 inch/Zoll			
Sandero II	10/12 →			
Duster	10 →	40 22 272 72R	<b>60 94 6192</b>	M12 x 1,5 x 53

Logan I	04 →		40 22 272 72R	<b>60 94 6192</b>	SW 17 / G 8.8 / Ke
Logan II	13 →				zinc-nickel-coated /
Sandero I	06/08 →				Zink-Nickel-beschichtet
Sandero II	10/12 →				
<b>DAEWOO</b>					
Matiz	09/98 → 03/05	steel rim / Stahlfelge	94515470	<b>13 93 3925</b>	M12 x 1,25
Spark	09/98 → 03/05	steel rim / Stahlfelge			H 23 / SW 17 / G 8 / Ke
Evanda	08/02 → 03/05	alloy rim / Alufelge	94837389	<b>20 90 3375</b>	M12 x 1,5
Kalos	09/02 → 03/05	alloy rim / Alufelge			H 30 / SW 19 / G 8 / Ke
Lacetti	02/04 → 03/05	alloy rim / Alufelge			zinc-plated / verzinkt
Leganza	07/00 → 12/02	alloy rim / Alufelge			
Nubira	05/97 → 03/05	alloy rim / Alufelge			
Rezzo	09/00 → 03/05	alloy rim / Alufelge			
Tacuma	09/00 → 03/05	steel rim / Stahlfelge			
Evanda	08/02 → 03/05	alloy rim / Alufelge + steel rim / Stahlfelge	94515412 (94515402)	<b>13 93 3928</b>	M12 x 1,5 H 25 / SW 19 / G 8 / Ke
Kalos	09/02 → 03/05	steel rim / Stahlfelge			
Lacetti	02/04 → 03/05	steel rim / Stahlfelge			
Leganza	06/97 → 12/02	alloy rim / Alufelge + steel rim / Stahlfelge			



SWAG 10 90 9806



SWAG 10 92 2474



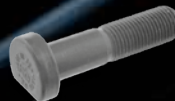
SWAG 10 92 4645



SWAG 10 92 9466



SWAG 13 93 3928



SWAG 99 90 1471



SWAG 99 90 3176

to fit / passend für			Ref. no. / Vergl.-Nr.	SWAG no.	Remarks / Anmerkungen
<b>DAEWOO</b>					
Nubira	05/97 → 12/03	steel rim / Stahlfelge	94515412	<b>13 93 3928</b>	M12 x 1,5
Rezzo	09/00 → 03/05	steel rim / Stahlfelge	(94515402)		H 25 / SW 19 / G 8 / Ke
Tacuma	09/00 → 03/05	steel rim / Stahlfelge			
Vivant	09/00 → 03/05	steel rim / Stahlfelge			
<b>DODGE</b>					
Sprinter 02VA - 06VA	02 → 06	alloy rim / Alufelge	05104018AA	<b>10 90 9806</b>	M14 x 1,5 x 22,5/74 / SW 19 / G 10.9 / dacromet
Sprinter 02-06VA	02 → 06		05104651AA		<b>10 92 2474</b>

					G 10 / Fb / geomet
Sprinter 02-06VA	02 → 06	alloy rim / Alufelge + steel rim / Stahlfelge	05104080AA	<b>10 92 4645</b>	M14 x 1,5 x 30/59 / SW 19 / G 10.9 / Ku / dacromet
Sprinter VB07, VB08, VB09	07 → 09	steel rim / Stahlfelge	68006805AA	<b>10 92 9466</b>	M14 x 1,5 x 58 SW 18 / G 10.9 / Ku/dacromet
Sprinter 03-06VA	02 → 06	steel / Stahl	05103938AA	<b>99 90 1471</b>	M14 x 1,5 x 32/68 / Ø25 / G 10.9 / to fit / passend für Heavy Duty 2WD Medium Duty 4WD phosphated / phosphatiert double tires rear / Doppelbereifung hinten
Sprinter 03-06VA	02 → 06		05139905AA	<b>99 90 3176</b>	M14 x 1,5 x 50/57 / Ø25 / G 10.9 / to fit / passend für Heavy Duty 2WD Medium Duty 4WD phosphated / phosphatiert double tires rear / Doppelbereifung hinten



SWAG 70 91 0633



SWAG 70 91 2706



SWAG 70 91 2707



SWAG 70 91 9335



SWAG 70 91 9341



SWAG 99 90 7066



SWAG 62 92 9208



SWAG 62 93 0400

to fit / passend für		Ref. no. / Vergl.-Nr.	SWAG no.	Remarks / Anmerkungen
<b>FIAT</b>				
Croma 194	05 → 10	51732885	<b>99 90 7066</b>	M12 x 1,5 x 22/47,5
Grande Punto 199	05 → 11			SW 17 / G 10.9 / Ke zinc-plated / verzinkt
Brava / Bravo I 182	95 → 98	13230024	<b>70 91 0633</b>	M12 x 1,25 x 22/40
Marea 185	96 → 02			SW 19 / G 8.8 / Ke / dacromet
Punto I 176	93 → 99			
Punto I Cabrio 176C	94 → 00			
Tipo 160	87 → 95			

Tempra 159	89 → 96	steel rim / Stahlfelge			
Scudo 220	95 → 07	steel rim / Stahlfelge	1476244080	<b>70 91 2707</b>	M14 x 1,5 x 25/52
Ulysse I 220	95 → 02	steel rim / Stahlfelge			SW 19 / G 8.8 / Ke / dacromet
Ulysse II Nuovo 179AX	02 → (ch.) → 09428	steel rim / Stahlfelge			
Ducato I 290	82 → 94	steel rim / Stahlfelge	13229724	<b>70 91 2706</b>	M14 x 1,5 x 30/52
Talento 290	86 → 94	steel rim / Stahlfelge			SW 22 / G 8.8 / Ke / dacromet
Scudo Nuovo 270	07 →	alloy rim / Alufelge	9644576680	<b>62 92 9208</b>	M12 x 1,25 x 19,1/57,15 SW 17 / G 10.9 / Fb
500 Nuova	07 →	steel / Stahl, Alu	11294235	<b>70 91 9341</b>	M12 x 1,25 x 22/48,5
Bravo II 198	07 →	steel / Stahl, Alu	(13230325)		SW 17 / G 8.8 / Ke / dacromet
Doblo 119	00 → 05	steel / Stahl, Alu	(13230435)		
Idea	03 → 12	steel / Stahl, Alu			
Multipia 186	98 → 10	steel / Stahl, Alu	11294235	<b>70 91 9341</b>	M12 x 1,25 x 22/48,5
Panda II Nuova 169	03 → 09	steel / Stahl, Alu	(13230325)		SW 17 / G 8.8 / Ke / dacromet
Punto II 188	99 → 10	steel / Stahl, Alu	(13230435)		
Stilo 192	01 → 07	steel / Stahl, Alu			
Scudo Nuovo 270	07 →	steel rim / Stahlfelge	9634648980	<b>62 93 0400</b>	M12 x 1,25 x 24/49 SW 17 / G 10.9 / Ke
Barchetta 183	95 → CH 8119	steel rim / Stahlfelge	13228924	<b>70 91 9335</b>	M12 x 1,25 x 27/42



SWAG 50 94 0247



SWAG 62 92 1175



SWAG 62 93 2439



SWAG 62 93 2440



SWAG 62 93 2441



SWAG 62 93 2442



SWAG 62 93 2450



SWAG 70 91 9335



SWAG 70 91 9341

to fit / passend für			Ref. no. / Vergl.-Nr.	SWAG no.	Remarks / Anmerkungen
<b>FIAT</b>					
Cinquecento 170	93 → 98	steel rim / Stahlfelge	13228924	<b>70 91 9335</b>	M12 x 1,25 x 27/42
Panda 141 A	81 → 03	steel rim / Stahlfelge	(4287933)		SW 19 / G 8.8 / Ke / dacromet
Seicento 187	98 → 10	steel rim / Stahlfelge			
Uno 146	83 → 95	steel rim / Stahlfelge			
Scudo Nuovo 270	07 → (DAT 21/10/2007 →)	steel rim / Stahlfelge	9682405480	<b>62 92 1175</b>	M12 x 1,25 x 47 SW 17 / G 10.9 / Ke/dacromet
Scudo 220	95 → 07	steel rim / Stahlfelge	1493974080	<b>62 93 2439</b>	M14 x 1,5 x 56,5
Ulysse II Nuovo 179AX	02 → (ch.) 09429 →	steel rim / Stahlfelge			SW 17 / G 10.9 / Ke / geomet



Ducato 230	94 → 06 Nutzlast / payload 1,0t + 1,4t	steel rim / Stahlfelge	1345713080	<b>62 93 2440</b>	M14 x 1,5 x 19/53 SW 24 / G 10.9 / Ke / geomet
Ducato 230	94 → 06, Nutzlast / payload 1,8t	steel rim / Stahlfelge	1345714080	<b>62 93 2450</b>	M16 x 1,5 x 23/57 SW 24 / G 10.9 / Ke / geomet
Ducato Nuovo 250	06 → 11 Nutzlast / payload 1,2t → 1,6t	steel rim / Stahlfelge alloy rim / Alufelge Alu 15"	1363349080 (1351202080)	<b>62 93 2441</b>	M14 x 1,5 x 22/62 SW 21 / G 10.9 / Ke / geomet
Ducato Nuovo 250	06 → 11 Nutzlast / payload 1,6t →	steel rim / Stahlfelge alloy rim / Alufelge Alu 16"	1351203080	<b>62 93 2442</b>	M16 x 1,5 x 25/64 SW 21 / G 10.9 / Ke / geomet

## FORD

KA	Mod. 08	steel / Stahl, Alu	1 559 373 W303433	<b>70 91 9341</b>	M12 x 1,25 x 22/48,5 SW 17 / G 8.8 / Ke / dacromet
B-Max 12	Mod. 08/12 →	steel rim / Stahlfelge	5 114 405 (ACPA1012AXA)	<b>50 94 0247</b>	M12 x 1,5 x 15 SW 19 / G 10 / Ke zinc-nickel / Zink-Nickel
C-Max 11	Mod. 11/12 →	steel rim / Stahlfelge			
Fiesta 13	Mod. 11/12 →	steel rim / Stahlfelge			
Focus 11	Mod. 12/12 →	steel rim / Stahlfelge			
Kuga 13	Mod. 11/12 →	steel rim / Stahlfelge			
Tourneo Connect 13	Mod. 09/13 →	steel rim / Stahlfelge			
Tourneo Courier 14	Mod. 04/14 →	steel rim / Stahlfelge			



SWAG 50 90 3424



SWAG 50 92 7413



SWAG 50 92 9463



SWAG 50 94 0247

to fit / passend für			Ref. no. / Vergl.-Nr.	SWAG no.	Remarks / Anmerkungen
<b>FORD</b>					
Transit Connect 13	Mod. 09/13 →	steel rim / Stahlfelge	5 114 405	<b>50 94 0247</b>	M12 x 1,5 x 15
Transit Courier 14	Mod. 04/14 →	steel rim / Stahlfelge	(ACPA1012AXA)		SW 19 / G 10 / Ke zinc-nickel / Zink-Nickel
Escort	Mod. 81, 86	steel rim / Stahlfelge	6 069 623	<b>50 90 3424</b>	M12 x 1,5 x 26/51
Fiesta	Mod. 76	steel rim / Stahlfelge	81AB1107AA		SW 19 / G 10.9 / Ke / dacromet
Orion	Mod. 83, 86	steel rim / Stahlfelge			
Cortina, Capri 2	Mod. 75, 78	steel rim / Stahlfelge	1 470 843	<b>50 92 7413</b>	M12 x 1,5
Escort / Orion	Mod. 91, 95	steel rim / Stahlfelge	W713392S440		H 15 / SW 19 / G 10 / Ke /

Fiesta	Mod. 89, 96, 02, 08	steel rim / Stahlfelge	(1 007 487)	<b>50 92 7413</b>	M12 x 1,5 H 15 / SW 19 / G 10 / Ke / Magni
Fusion	Mod. 02	steel rim / Stahlfelge	(1 447 852)		
Focus	Mod. 99, 04, 08, 11	steel rim / Stahlfelge	(6 040 307)		
Focus C-Max	Mod. 03, 07	steel rim / Stahlfelge	(E826092S76)		
Focus Cabrio	Mod. 06	steel rim / Stahlfelge			
Mondeo	Mod. 93, 97, 01, 07	steel rim / Stahlfelge	1 470 843		
Granada / Consul	Mod. 76, 78, 82, 85	steel rim / Stahlfelge	W713392S440		
Ikon	Mod. 00	steel rim / Stahlfelge	(1 007 487)		
KA	Mod. 97	steel rim / Stahlfelge	(1 447 852)		
Kuga	Mod. 08	steel rim / Stahlfelge	(6 040 307)		
Puma	Mod. 97	steel rim / Stahlfelge	(E826092S76)		
P 100	Mod. 83, 87	steel rim / Stahlfelge	(W700344S440)		
Scorpio	Mod. 85, 95	steel rim / Stahlfelge			
Sierra	Mod. 83, 87	steel rim / Stahlfelge			
Taurus	Mod. 76, 80	steel rim / Stahlfelge			
Transit 80-120	Mod. 86, 92, 95	steel rim / Stahlfelge			
Capri	Mod. 75	alloy rim / Alufelge	1 678 260	<b>50 92 9463</b>	M12 x 1,5 H 31 / SW 19 / G 10 / Ke closed execution / geschlossene Ausführung
Cortina	Mod. 80	alloy rim / Alufelge	8V411K024AC		
Cougar	Mod. 98	alloy rim / Alufelge	(1 454 051)		
Escort	Mod. 91, 95	alloy rim / Alufelge	(1 567 143)		



SWAG 50 90 7176



SWAG 50 92 9463

to fit / passend für			Ref. no. / Vergl.-Nr.	SWAG no.	Remarks / Anmerkungen
<b>FORD</b>					
Fiesta	Mod. 02, 08, 89, 96	alloy rim / Alufelge	1 678 260	<b>50 92 9463</b>	M12 x 1,5
Fusion	Mod. 02	alloy rim / Alufelge	8V411K024AC		H 31 / SW 19 / G 10 / Ke
Focus	Mod. 04, 08, 11, 99	alloy rim / Alufelge	(1 454 051)		closed execution /
Focus C-Max	Mod. 03, 07, 11	alloy rim / Alufelge	(1 567 143)		geschlossene Ausführung
Focus Cabriolet	Mod. 06	alloy rim / Alufelge	(8V411K024AA)		with fixed cone /
Granada	Mod. 82	alloy rim / Alufelge	(8V411K024AB)		mit festem Kegel
KA	Mod. 97	alloy rim / Alufelge			
Kuga	Mod. 08	alloy rim / Alufelge			

Mondeo	Mod. 00, 07, 93, 97	alloy rim / Alufelge	1 678 260	<b>50 92 9463</b>	M12 x 1,5 H 31 / SW 19 / G 10 / Ke closed execution / geschlossene Ausführung with fixed cone / mit festem Kegel
Street Ka	Mod. 03	alloy rim / Alufelge	8V411K024AC		
Orion	Mod. 91	alloy rim / Alufelge	(1 454 051)		
Puma	Mod. 97	alloy rim / Alufelge	(1 567 143)		
Scorpio	Mod. 85, 95	alloy rim / Alufelge	(8V411K024AA)		
Sierra	Mod. 83	alloy rim / Alufelge	(8V411K024AB)		
Taunus	Mod. 80	alloy rim / Alufelge			
Transit	Mod. 86, 92, 95	alloy rim / Alufelge			
Transit Connect	Mod. 02	alloy rim / Alufelge			
Cougar	Mod. 98	alloy rim / Alufelge	1 366 432	<b>50 90 7176</b>	M12 x 1,5 H 27,5 / SW 19 / G 8 / Ke
Escort / Orion	Mod. 86, 91, 95	alloy rim / Alufelge	91AB1K024AC		
Fiesta	Mod. 89, 96, 01	alloy rim / Alufelge	(6 452 292)		zinc-plated / verzinkt open execution / offene Ausführung
Focus	Mod. 99, 04	alloy rim / Alufelge	(91AB1K024AB)		
Focus C-Max	Mod. 03	alloy rim / Alufelge			
Fusion	Mod. 02	alloy rim / Alufelge			
Granada	Mod. 85	alloy rim / Alufelge			
KA	Mod. 97	alloy rim / Alufelge			
Mondeo	Mod. 93, 97, 01	alloy rim / Alufelge			



SWAG 50 90 7176



SWAG 50 93 0249



SWAG 50 93 2307



SWAG 50 94 4949

to fit / passend für			Ref. no. / Vergl.-Nr.	SWAG no.	Remarks / Anmerkungen
<b>FORD</b>					
Puma	Mod. 97	alloy rim / Alufelge		<b>50 90 7176</b>	M12 x 1,5
Scorpio	Mod. 85, 95	alloy rim / Alufelge			H 27,5 / SW 19 / G 8 / Ke
Cougar	Mod. 98	steel / Stahl, Alu	1 473 166	<b>50 93 2307</b>	M12 x 1,5 x 26/42/46
Escort / Orion	Mod. 91, 95	steel / Stahl, Alu	(1 359 311)(1 481 984)		G 12.9 / dacromet
Fiesta	Mod. 89, 96, 02, 08	steel / Stahl, Alu	(1 629 657)(1 637 224)		
Focus	Mod. 99 (ex.) RS, 04, 08	steel / Stahl, Alu	(6 041 137)(6 168 108)		
Focus Cabriolet	Mod. 06	steel / Stahl, Alu	(6 586 309)(6 789 185)		
Focus C-Max	Mod. 03, 07	steel / Stahl, Alu	(W700678S442)		

KA	Mod. 96	steel / Stahl, Alu	(W700678S300)	<b>50 93 2307</b>	M12 x 1,5 x 26/42/46 G 12.9 / dacromet
Kuga	Mod. 08	steel / Stahl, Alu	(W700678S301)		
Mondeo	Mod. 93, 97, 01	steel / Stahl, Alu	(W700678S439)		
Puma	Mod. 97	steel / Stahl, Alu	(85GB1107AA)		
Sierra	Mod. 87	steel / Stahl, Alu	(85GB1107BB)		
Fiesta	Mod. 02, 07/08 →	alloy rim / Alufelge	1 454 053	<b>50 93 0249</b>	M12 x 1,5 H 26,5 / SW 19 / G 10 / Ke phosphated / phosphatiert with fixed cone / Mit festem Kegel
Focus	Mod. 08	alloy rim / Alufelge	8V411K024BA		
Focus C-Max	Mod. 07	alloy rim / Alufelge			
Fusion	Mod. 02, 07/08 →	alloy rim / Alufelge			
B-Max	Mod. 12	alloy rim / Alufelge	5 114 407	<b>50 94 4949</b>	M12 x 1,5 H 31 / SW 19 / G 10 / Ke chromed / verchromt
Ecosport	Mod. 12	alloy rim / Alufelge	ACPA1012DXA		
Fiesta	Mod. 13	alloy rim / Alufelge			
Figo	Mod. 11	alloy rim / Alufelge			
Focus	Mod. 11	alloy rim / Alufelge			
Focus C-Max	Mod. 11	alloy rim / Alufelge			
Kuga	Mod. 13	alloy rim / Alufelge			
Ranger	Mod. 12	alloy rim / Alufelge			
Tourneo Connect	Mod. 13	alloy rim / Alufelge			
Transit Connect	Mod. 13	alloy rim / Alufelge			
Transit Courier	Mod. 14	alloy rim / Alufelge			



SWAG 32 90 4912



SWAG 32 91 7818



SWAG 50 90 6218



SWAG 50 92 6102



SWAG 50 92 6287



SWAG 50 94 9071



SWAG 50 94 9072



SWAG 50 94 9073

to fit / passend für			Ref. no. / Vergl.-Nr.	SWAG no.	Remarks / Anmerkungen
<b>FORD</b>					
Galaxy	Mod. 95	steel / Stahl, Alu	7 201 016 95VW1107AB	<b>32 90 4912</b>	M14 x 1,5 x 34/55 SW 19 / G 10.9 / Ku phosphated / phosphatiert
Galaxy	Mod. 00	steel / Stahl, Alu	1 126 877 YM211K013AB	<b>32 91 7818</b>	M14 x 1,5 x 34/62 SW 19 / G 10.9 / Ku/dacromet
Galaxy S-Max	Mod. 06 Mod. 06	steel rim / Stahlfelge steel rim / Stahlfelge	1 377 748 6G921K024BA	<b>50 92 6102</b>	M14 x 1,5 x 15 SW 21 / G 10 / Ke zinc-plated / verzinkt
Tourneo Custom	Mod. 13 2.2 D	steel rim / Stahlfelge	1 811 812	<b>50 94 9071</b>	M14 x 1,5 x 25



Transit Custom Transit	Mod. 13 2.2 D Mod. 14 2.2 D	steel rim / Stahlfelge steel rim / Stahlfelge	BK311K024AB		SW 21 / G 10 / Fb / Zinklad
Galaxy S-Max	Mod. 06 Mod. 06	alloy rim / Alufelge alloy rim / Alufelge	1 676 176 9G911K024AA (1 377 747)(1 428 137) (6G921K024AB) (6G921K024AD)	<b>50 92 6287</b>	M14 x 1,5 x 34 SW 21 / G 10 / Ke chromed / verchromt
Galaxy S-Max	Mod. 15 1.5 B, 2.0 B, 2.0 D Mod. 15 1.5 B, 2.0 B, 2.0 D	alloy rim / Alufelge alloy rim / Alufelge	5 275 544 ACPA1012JXA	<b>50 94 9073</b>	M14 x 1,5 x 37 SW 21 / G 10 / Ke zinc-nickel-coated / Zink-Nickel-beschichtet
Tourneo Custom Transit Custom Transit	Mod. 13 2.2 D Mod. 13 2.2 D Mod. 14 2.2 D	alloy rim / Alufelge alloy rim / Alufelge alloy rim / Alufelge	5 196 786 ACPA1012KXA	<b>50 94 9072</b>	M14 x 1,5 x 42,5 SW 21 / G 10 / Ke zinc-nickel-coated / Zink-Nickel-beschichtet
Transit	Mod. 66, 71, 76 Mod. 78, 82 Mod. 84, 86		6 119 808 84VB1121AA (1 470 417) (4305.25.01)	<b>50 90 6218</b>	M16 x1,5 H 22,5 / SW 24 / G 10 / Ku rear left / hinten links front right / vorne rechts



SWAG 50 93 9371



SWAG 50 94 6049



SWAG 50 93 6655



SWAG 85 93 2479

to fit / passend für		Ref. no. / Vergl.-Nr.	SWAG no.	Remarks / Anmerkungen
<b>FORD</b>				
Transit	Mod. 00, 06	steel rim / Stahlfelge	<b>50 93 9371</b> 7C111K024AB (1 371 365) (1 520 046) (4 052 603) (4 153 719) (W705808S427) (W705808S902)	M14 x 2 / SW 21 front and rear / vorne + hinten

Transit / Tourneo Custom Transit	Mod. 13 Mod. 14	steel rim / Stahlfelge steel rim / Stahlfelge / Single-wheel attachment / Einzelradbefestigung	1 763 869	<b>50 94 6049</b>	M14 x 1,5 H 31 / SW 21 / G 10 / Ke
Transit / Tourneo Connect	Mod. 02	steel rim / Stahlfelge	1 462 130 2T141012AD (4 367 098) (4 386 256) (4 451 436) (2T141012AB) (2T141012AC)	<b>50 93 6655</b>	M12 x 1,5 H 32 / SW 19 / G 10 / Ke

## HONDA

Accord IV	01/92 → 09/93	alloy rim / Alufelge 14"	90381-SL5-901	<b>85 93 2479</b>	M12 x 1,5 x 18
Accord V	03/93 → 02/98	steel / Stahl 14", Alu15"			SW 19 / G 8 / Ku
Accord VI	02/96 → 10/98	steel / Stahl, Alu			white zinc-plated / weißverzinkt
Accord VII	10/98 → 01/03	alloy rim / Alufelge 17"			
Civic IV	01/93 → 03/96	alloy rim / Alufelge 15"			
Civic V	11/95 → 02/01	alloy rim / Alufelge 14"			
Civic VI	02/01 → 01/06	alloy rim / Alufelge 14"			



SWAG 80 91 1939



SWAG 85 93 2479

to fit / passend für			Ref. no. / Vergl.-Nr.	SWAG no.	Remarks / Anmerkungen
<b>HONDA</b>					
Civic VII	01/06 →	alloy rim / Alufelge 17"	90381-SL5-901	<b>85 93 2479</b>	M12 x 1,5 x 18 SW 19 / G 8 / Ku white zinc-plated / weißverzinkt
Civic Hybrid	01/06 →	alloy rim / Alufelge 15"			
Civic CRX	03/92 → 12/98	alloy rim / Alufelge 14"			
Civic Shuttle II	01/93 → 02/95	alloy rim / Alufelge 14"			
Concerto	08/89 → 10/96	steel rim / Stahlfelge 14"			
Insight	08/00 →	alloy rim / Alufelge 14"			
Integra	96 →	alloy rim / Alufelge 15"			
Jazz	02 →	steel rim / Stahlfelge			

Legend II / Legend Coupé II	01/91 → 02/96	alloy rim / Alufelge 15"	90381-SL5-901	<b>85 93 2479</b>	M12 x 1,5 x 18
Legend III	02/96 →	alloy rim / Alufelge 15"			SW 19 / G 8 / Ku
Prelude IV	02/92 → 09/96	alloy rim / Alufelge 14"			white zinc-plated /
Prelude V	10/96 →	alloy rim / Alufelge 14"			weißverzinkt
<b>HYUNDAI</b>					
Accent	09/99 → 11/02 13"	alloy rim / Alufelge	52951-11210	<b>80 91 1939</b>	M12 x 1,5 x 17
Accent / Verna	11/01 → 03/06 14"	alloy rim / Alufelge			SW 21 / G 8 Ke
Accent	01/06 → 15"	alloy rim / Alufelge			yellow zinc-plated /
Atos / Prime	02/01 → 12/05 13"	alloy rim / Alufelge			gelbverzinkt
Coupe	07/96 → 05/99 15"	alloy rim / Alufelge			
Coupe	09/01 → 09/04 16"	alloy rim / Alufelge			
Lantra	11/95 → 04/98 14"	alloy rim / Alufelge			
Elantra	06/00 → 06/02 15"	alloy rim / Alufelge			
Matrix	05/01 → 11/04 15"	alloy rim / Alufelge			
Sonata	08/93 → 05/96 15"	alloy rim / Alufelge			
Sonata EF	04/01 → 15"	alloy rim / Alufelge			
Sonata NF	11/04 → 08/06 16"	alloy rim / Alufelge			
XG25/XG30	12/98 → 11/02 15"	alloy rim / Alufelge			
XG25/XG30	11/02 → 11/05 16"	alloy rim / Alufelge			



SWAG 70 91 0633



SWAG 70 91 2707



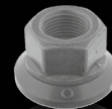
SWAG 70 91 9341



SWAG 80 91 1939



SWAG 81 92 6587



SWAG 99 90 4899

to fit / passend für			Ref. no. / Vergl.-Nr.	SWAG no.	Remarks / Anmerkungen
<b>HYUNDAI</b>					
Centennial	08/01 →	alloy rim / Alufelge	52950-37000	<b>81 92 6587</b>	M12 x 1,5 x 37,5 SW 21 / G 8 / Ke chromed / verchromt
Santamo	09/98 → 10/02	alloy rim / Alufelge	(52950-M2050)		
Terracan	08/01 → 02/03	alloy rim / Alufelge			
Trajet	01/00 → 12/02	alloy rim / Alufelge			
<b>IVECO</b>					
59-12 Turbo Daily		steel front + rear / Stahl vorne + hinten	5 0435 6518 (0 0445 9602) (5 0407 1277)	<b>99 90 4899</b>	HM 18 x 1,5 H 25 / SW 27 / G 10 / Fb phosphated / phosphatiert

KIA					
Amanti	07/06 →	alloy rim / Alufelge	52950-37000	<b>81 92 6587</b>	M12 x 1,5 x 37,5
Joice	01/91 → 05/01	alloy rim / Alufelge			SW 21 / G 8 / Ke
Opirus	09/06 →	alloy rim / Alufelge			chromed / verchromt
Joice	05/01 → 03/03	alloy rim / Alufelge 5,5Jx14"	52951-11210	<b>80 91 1939</b>	M12 x 1,5 x 17
Magentis	02/01 → 09/05	steel rim / Stahlfelge 5,5Jx14"			SW 21 / G 8 / Ke
Optima	02/01 → 09/05	steel rim / Stahlfelge 5,5Jx14"			yellow zinc-plated / gelbverzinkt
LANCIA					
Dedra	Mod. 89 → 94 1,6 l + TDS	steel rim / Stahlfelge	13230024	<b>70 91 0633</b>	M12 x 1,25 x 22/40
Dedra	Mod. → 11.89 1,8 l	steel rim / Stahlfelge			SW 19 / G 8.8 / Ke / dacromet
Delta	Mod. 94 → 99 1,4, 1,6, 1,8 l	steel rim / Stahlfelge			
Y	Mod. 95 →	steel rim / Stahlfelge			
Delta	Mod. 08 →	steel / Stahl, Alu	11294235	<b>70 91 9341</b>	M12 x 1,25 x 22/48,5
Kappa	Mod. 94 → 01 (ch.) 2084919 →	steel / Stahl, Alu	(13230425)		SW 17 / G 8.8 / Ke / dacromet
Lybra	Mod. 99	steel / Stahl, Alu	(13230435)		
Y	Mod. 00 → 03 (ch.) 3602184 →	steel / Stahl, Alu			
Zeta	Mod. 95 →	steel rim / Stahlfelge	1476244080	<b>70 91 2707</b>	M14 x 1,5 x 25/52
					SW 19 / G 8.8 / Ke / dacromet



SWAG 80 91 1939



SWAG 81 92 6586



SWAG 81 92 6587



SWAG 81 93 3497

to fit / passend für		Ref. no. / Vergl.-Nr.	SWAG no.	Remarks / Anmerkungen
<b>LEXUS</b>				
Lexus ES 300	03/96 → 07/01	steel rim / Stahlfelge	90942-01007	<b>80 91 1939</b> M12 x 1,5 x 17 SW 21 / G 8 / Ke yellow zinc-plated / gelbverzinkt
Lexus ES 300, GS 300, 400, 430	08/96 →	alloy rim / Alufelge	90942-01058	<b>81 92 6586</b> M12 x 1,5 x 47,5 SW 21 / G 8 / Ke
Lexus GX 470	11/01 →	alloy rim / Alufelge		
Lexus IS200,300	07/01 →	alloy rim / Alufelge		
Lexus LS400,430	01/00 →	alloy rim / Alufelge		
Lexus RX300, 400H	01/98 →	alloy rim / Alufelge		



Lexus SC300, 400, 430	01/97 →	alloy rim / Alufelge			
Lexus ES 300, 330, 350	07/01 →	alloy rim / Alufelge	90942-01033	<b>81 92 6587</b>	M12 x 1,5 x 37,5
Lexus GS 300, 400, 430, 450H	08/97 →	alloy rim / Alufelge			SW 21 / G 8 / Ke
Lexus IS 200, 300, 250, 350	01/99 →	alloy rim / Alufelge			chromed / verchromt
Lexus LS 430	07/03 →	alloy rim / Alufelge			
Lexus RX 300, 330, 400H	02/03 →	alloy rim / Alufelge			
LX470	01/98 →	alloy rim / Alufelge	90942-01103	<b>81 93 3497</b>	M14 x 1,5
LX570	11/07 →	alloy rim / Alufelge			H 46,5 / SW 22 / G 8 / Ke chromed / verchromt

## MAZDA

2	07 →	steel rim / Stahlfelge	0603-26-161A	<b>80 91 1939</b>	M12 x 1,5 x 17 SW 21 / G 8 / Ke yellow zinc-plated / gelbverzinkt
3		steel rim / Stahlfelge	(0603-26-161)		
5		steel rim / Stahlfelge			
6		steel rim / Stahlfelge			
121		steel rim / Stahlfelge			
323		steel rim / Stahlfelge			
626		steel rim / Stahlfelge			
929		steel rim / Stahlfelge			
Demio		steel rim / Stahlfelge			



SWAG 10 92 2474



SWAG 80 91 1939



SWAG 83 93 4754



SWAG 99 90 8476

to fit / passend für		Ref. no. / Vergl.-Nr.	SWAG no.	Remarks / Anmerkungen
<b>MAZDA</b>				
E 2000		0603-26-161A	<b>80 91 1939</b>	M12 x 1,5 x 17 SW 21 / G 8 / Ke yellow zinc-plated / gelbverzinkt
E 2200		(0603-26-161)		
MPV				
MX 3				
MX 5				
MX 6				
Premacy				
RX 7				

Xedos 6 / 9		steel rim / Stahlfelge			
2	10/07 →	alloy rim / Alufelge	B002-37-160B	<b>83 93 4754</b>	M12 x 1,5 H 29,3 / SW 21 / G 8 / Ke chromed / verchromt
3	07/06 →	alloy rim / Alufelge	(B002-37-160)		
5	02/05 →	alloy rim / Alufelge	(B002-37-160A)		
6	06/05 →	alloy rim / Alufelge			
CX-7	11/06 →	alloy rim / Alufelge			
CX-9	11/07 →	alloy rim / Alufelge			
E2000	08/99 → 09/04	alloy rim / Alufelge			
E2200	08/99 → 09/04	alloy rim / Alufelge			
RX-8	10/03 →	alloy rim / Alufelge			
MX-5 III	03/05 →	alloy rim / Alufelge			

## MERCEDES-BENZ

BM 905	all/alle 616CDI		074361 014205	<b>10 92 2474</b>	M14 x 1,5 x 16 DIN 74361 / Fb geomet
BM 107 → 08.85	280 SL/SLC, 350 SL/SLC, 380 SL/SLC, 450 SL/SLC	steel rim / Stahlfelge	000 990 45 07 (170 401 01 70)	<b>99 90 8476</b>	M12 x 1,5 x 19/40 SW 17 / G 10.9 / Ku / geomet
BM 108	250 S/SE, 280 SE/SE 3,5/SEL/SEL 3,5, 300 SEB	steel rim / Stahlfelge	000 990 45 07 (170 401 01 70)		
BM 109	300 SEL/SEL 3,5/SEL 6,3	steel rim / Stahlfelge	(201 401 02 70)		
BM 110	190 C/DC, 200/D, 230	steel rim / Stahlfelge	(210 401 02 70)		



SWAG 10 90 3857



SWAG 99 90 8476



SWAG 99 99 0005

to fit / passend für		Ref. no. / Vergl.-Nr.	SWAG no.	Remarks / Anmerkungen
<b>MERCEDES-BENZ</b>				
BM 111	220 SEB, 230 S, 250 SE/C, 280 SE/C/C 3,5	steel rim / Stahlfelge	000 990 45 07 (170 401 01 70)	<b>99 90 8476</b> M12 x 1,5 x 19/40 SW 17 / G 10.9 / Ku / geomet
BM 113	250 SL, 280 SL	steel rim / Stahlfelge	(201 401 02 70)	
BM 114	230, 230/6, 250/C/CE, 280/C/ CE/E	steel rim / Stahlfelge	(210 401 02 70)	
BM 115	200/D, 220/D, 230, 230.4, 240 D/D 3,0	steel rim / Stahlfelge		
BM 116	280 S/SE/SEL, 350 SE/SEL,	steel rim / Stahlfelge		

BM 123	450 SE/SEL/SEL 6,9 200/D/T → 300 D/TD/TD Turbodiesel	steel rim / Stahlfelge	000 990 45 07 (170 401 01 70) (201 401 02 70) (210 401 02 70)	<b>99 90 8476</b>	M12 x 1,5 x 19/40 SW 17 / G 10.9 / Ku / geomet
BM 124	200/D/E/T/TD/TE → 300 D/E/ CE/TE/TD	steel rim / Stahlfelge			
BM 126	260 SE → 500 SE/SEC/SEL	steel rim / Stahlfelge			
BM 129	300 SL/SL-24 V, 500 SL	steel rim / Stahlfelge			
BM 168	A-Klasse all / alle	steel rim / Stahlfelge			
BM 201	190 - 190 E 2,6	steel rim / Stahlfelge			
BM 202	C 180/T - C 43 AMG	steel rim / Stahlfelge			
BM 203	C 180 - C 350 AMG	steel rim / Stahlfelge			
BM 210	E 200 - E 420	steel rim / Stahlfelge			
BM 414	Vaneo	steel rim / Stahlfelge			
BM 107	450 SLC 5,0, 500 SL/SLC	alloy rim / Alufelge	126 401 06 70	<b>99 99 0005</b>	M12 x 1,5 x 29/52 / Ku
BM 123	200 T, 230 T/TE, 240 TD, 250 T, 280 TE, 300 TD/TD Turbo	alloy rim / Alufelge	(108 401 00 70)		SW 17 / G 8.8 / dacromet
BM 110	190 C, 200, 230 (ch.) → 074344	steel rim / Stahlfelge	110 990 00 59	<b>10 90 3857</b>	M12 x 1,5
BM 110	190 DC, 200 D (ch.) → 116436	steel rim / Stahlfelge	(120 990 00 59)		H 18 / SW 17 / G 8 / Ku
BM 111	220 SB	steel rim / Stahlfelge			zinc-plated / verzinkt
BM 120	180/D	steel rim / Stahlfelge			



SWAG 10 90 5123



SWAG 99 91 5655

to fit / passend für			Ref. no. / Vergl.-Nr.	SWAG no.	Remarks / Anmerkungen
<b>MERCEDES-BENZ</b>					
BM 124	E-Klasse/Class all/alle	alloy rim / Alufelge	000 990 48 07	<b>99 91 5655</b>	M12 x 1,5 x 40/61
BM 129	SL all/alle	alloy rim / Alufelge	(000 990 10 07)		SW 17 / G 10.9 / Ku / dacromet
BM 168	A-Klasse/Class all/alle	alloy rim / Alufelge	(124 400 01 70)		sperical collar radius 12 mm /
BM 170	SLK alle/all	alloy rim / Alufelge	(124 400 00 70)		Kugelbund Radius 12 mm
BM 171	SLK all/alle	alloy rim / Alufelge	(124 400 04 70)		
BM 201	C-Klasse/Class all/alle	alloy rim / Alufelge	(202 400 00 70)		
BM 202	C-Klasse/Class all/alle	alloy rim / Alufelge	(203 401 02 70)		
BM 203	C-Klasse/Class all/alle	alloy rim / Alufelge			

BM 208	CLK all/alle	alloy rim / Alufelge	000 990 48 07	<b>99 91 5655</b>	M12 x 1,5 x 40/61
BM 209	CKL all/alle	alloy rim / Alufelge	(000 990 10 07)		SW 17 / G 10.9 / Ku / dacromet
BM 210	E-Klasse/Class all/alle	alloy rim / Alufelge	(124 400 01 70)		spherical collar radius 12 mm /
BM 414	Vaneo all/alle	alloy rim / Alufelge	(124 400 00 70)		Kugelbund Radius 12 mm
BM 107	SL Cabrio 300/420/500	alloy rim / Alufelge	203 401 03 70	<b>10 90 5123</b>	M12 x 1,5 x 85
BM 124	E 200/Cabrio/D	alloy rim / Alufelge	(124 400 07 70)		SW 17 / G 10.9 / Ku / dacromet
	E 220/Cabrio	alloy rim / Alufelge	(126 400 00 70)		
	E 250 D/D Turbo	alloy rim / Alufelge			
	E 250 TD/TD Turbo	alloy rim / Alufelge			
	E 280	alloy rim / Alufelge			
	E 300 D/Turbo/	alloy rim / Alufelge			
	D Turbo 4 Matic	alloy rim / Alufelge			
	E 300 4 Matic	alloy rim / Alufelge			
	E 300 TD Turbo /	alloy rim / Alufelge			
	TD Turbo 4 Matic				
	E 320 /Cabrio/T	alloy rim / Alufelge			
	E 369 AMG/Cabrio	alloy rim / Alufelge			
	E 500	alloy rim / Alufelge			
	E 60 AMG 4 Matic alle/all				



SWAG 10 90 5123

to fit / passend für			Ref. no. / Vergl.-Nr.	SWAG no.	Remarks / Anmerkungen
<b>MERCEDES-BENZ</b>					
BM 124	200 / CE/Cabrio alle/all	alloy rim / Alufelge	203 401 03 70	<b>10 90 5123</b>	M12 x 1,5 x 85
	200 D/E/TE alle/all	alloy rim / Alufelge	(124 400 07 70)		M12 x 1,5 x 85
	220 CE/E alle/all	alloy rim / Alufelge	(126 400 00 70)		SW 17 / G 10.9 / Ku / dacromet
	230 CE/E/TE alle/all	alloy rim / Alufelge			
	250 D/Turbo/TD/Turbo alle/all	alloy rim / Alufelge			
	260 E/4 Matic/TE alle/all	alloy rim / Alufelge			
	280 E/320E/500E alle/all	alloy rim / Alufelge			
	300 CE/CE 3.4 AMG /	alloy rim / Alufelge			



BM 124	CE-24 alle/all 300 D/Turbo/Turbo 4 Matic/4 Matic alle/all 300 E/4 Matic/E-24 alle/all 300 TD/Turbo/ 4 Matic alle/all 300 TE/3.4 AMG/TE 4 Matic/ TE-24 alle/all 320 CE alle/all	alloy rim / Alufelge   alloy rim / Alufelge alloy rim / Alufelge alloy rim / Alufelge  alloy rim / Alufelge	203 401 03 70 (124 400 07 70) (126 400 00 70)	<b>10 90 5123</b>	M12 x 1,5 x 85 M12 x 1,5 x 85 SW 17 / G 10.9 / Ku / dacromet
BM 126	SE 260/300/420/500/ 560 alle/all SEL 300/420/500/520/ 560 alle/all SEC 420/500/560 alle/all SD 350	alloy rim / Alufelge  alloy rim / Alufelge  alloy rim / Alufelge			
BM 129	alle/all	alloy rim / Alufelge			
BM 168	alle/all	alloy rim / Alufelge			
BM 170	alle/all	alloy rim / Alufelge			
BM 171	alle/all	alloy rim / Alufelge			
BM 201	190 E Evolut. alle/all				
BM 202	C 180 T/200 T/200 T CDI/	alloy rim / Alufelge			



SWAG 10 90 5123



SWAG 10 90 5039

to fit / passend für			Ref. no. / Vergl.-Nr.	SWAG no.	Remarks / Anmerkungen
<b>MERCEDES-BENZ</b>					
BM 202	200 T Kompressor	alloy rim / Alufelge	203 401 03 70	<b>10 90 5123</b>	M12 x 1,5 x 85 SW 17 / G 10.9 / Ku / dacromet
	C 220 TD/ 220 T CDI	alloy rim / Alufelge	(124 400 07 70)		
	C 230 T/Kompressor	alloy rim / Alufelge	(126 400 00 70)		
	C 240 T/ 280 T	alloy rim / Alufelge			
	C 250 TD Turbo	alloy rim / Alufelge			
	C 43 T AMG	alloy rim / Alufelge			
BM 208	alle/all	alloy rim / Alufelge			
BM 209	CLK 200/Cabrio/200 CGI/	alloy rim / Alufelge			

BM 210	240/240 Cabrio/270 CDI/ 320/320 Cabrio/500/500 Cabrio/55 AMG/55 AMG Cabrio/55 AMG DTM Cabrio E 200/CDI/Kompressor E 220/CDI/T CDI E 240/T E250 TD E 270 CDI/T CDI E 280/T/T 4 Matic E 290 TD Turbo E 320/CDI/T/ T CDI/4 Matic E 420/430/430 T/430 T4 Matic E 50 AMG/E 55 AMG/ E 55 T AMG	alloy rim / Alufelge alloy rim / Alufelge alloy rim / Alufelge alloy rim / Alufelge alloy rim / Alufelge alloy rim / Alufelge alloy rim / Alufelge alloy rim / Alufelge alloy rim / Alufelge alloy rim / Alufelge alloy rim / Alufelge alloy rim / Alufelge alloy rim / Alufelge alloy rim / Alufelge alloy rim / Alufelge alloy rim / Alufelge	203 401 03 70 (124 400 07 70) (126 400 00 70)	<b>10 90 5123</b>	M12 x 1,5 x 85 SW 17 / G 10.9 / Ku / dacromet
BM 140	S 280 (300 SE 2.8), S 320 (300 SE 3.2/SEL 3.2) S 350 D Turbo (300 SD Turbo),	steel rim / Stahlfelge	140 401 02 70	<b>10 90 5039</b>	M14 x 1,5 x 25/45 SW 17 / G 8.8 / Ku / dacromet



SWAG 10 90 5039



SWAG 10 93 8021



SWAG 99 90 1849

to fit / passend für		Ref. no. / Vergl.-Nr.	SWAG no.	Remarks / Anmerkungen
<b>MERCEDES-BENZ</b>				
BM 140	S 420 (400 SE/SEL/SEC) S 500 (500 SE/SEL/SEC), S 600 (600 SE/SEL/SEC)	140 401 02 70	<b>10 90 5039</b>	M14 x 1,5 x 25/45 SW 17 / G 8.8 / Ku / dacromet
BM 140*	S 280 (300 SE 2.8), S 320 (300 SE 3.2/SEL 3.2) S 350 D Turbo (300 SD Turbo), S 420 (400 SE/SEL/SEC) S 500 (500 SE/SEL/SEC), S 600 (600 SE/SEL/SEC)	alloy rim / Alufelge 140 400 01 70	<b>99 90 1849</b>	M14 x 1,5 x 46/85 SW 17 / G 10.9 / Ku / dacromet
* 5+8-hole rim / 5+8-Loch-Felge				

BM 172*	SLK 200 / SLK250CDI / SLK350	steel rim / Stahlfelge	000 990 83 07	<b>10 93 8021</b>	M14 x 1,5 x 46,1 SW 17 / G 10.9 / Ku
BM 176	A 180CDI / A200 CDI/ A220CDI / A250	steel rim / Stahlfelge			black / schwarz phosphated / phosphatiert
BM 204**	C180 - 350 CDI C180/200/250/300/350 CGI C180/200/250/320/350 T CDI C180/200/250/350 T CGI C180/230/250/280/300/350 T C180/200 Komp./T Kompr. BlueEff. C180/200/350 BluEff. C220 T CDI BlueEff. C230/250/280/300/350 4-Matic C250/350 T 4-Matic BlueEff. C320 T 4-Matic C63 AMG / T AMG Coupe: C180/200/350 / C180/250 CGI / C220/250 CDI C350 4-Matic / C63 AMG	steel rim / Stahlfelge			
* (ex.) alu wheel 9-spoke-design LM-Rad 9-Speichen-Design					
**AMG 8,5 x 18 ET 44 255/45 spoke wheel 19" / AMG Speichenräder 19"					



SWAG 10 91 4519



SWAG 10 93 8021

to fit / passend für			Ref. no. / Vergl.-Nr.	SWAG no.	Remarks / Anmerkungen
<b>MERCEDES-BENZ</b>					
BM 231	SL 350 / 500	steel rim / Stahlfelge	000 990 83 07	<b>10 93 8021</b>	M14 x 1,5 x 46,1
BM 242	B 180 NGT	steel rim / Stahlfelge			SW 17 / G 10.9 / Ku
BM 246	B 180/200/220CDI/250	steel rim / Stahlfelge			black / schwarz phosphated / phosphatiert

BM 140*	S 280 (300 SE 2.8), S 320 (300 SE 3.2/SEL 3.2) S 350 D Turbo (300 SD Turbo), S 420 (400 SE/SEL/SEC) S 500 (500 SE/SEL/SEC), S 600 (600 SE/SEL/SEC)	alloy rim / Alufelge	000 990 53 07 (000 990 09 07) (140 400 05 70) (220 401 02 70)	<b>10 91 4519</b>	M14 x 1,5 x 45,5/70 SW 17 / G 10.9 / Ku / dacromet
BM 164	GL / ML (ex.) 17" 7 + 10 spoke design / Speichen Design	steel / Stahl, Alu			
BM 204.9	GLK	steel / Stahl, Alu			
BM 215	CL 500 - CL 600	steel / Stahl, Alu			
BM 220	S 280, S 320/CDI, S 430, S 500, S 600	steel / Stahl, Alu			
BM 240	Maybach 57 / 62 / S (ch.) → A 001455	steel / Stahl, Alu			
BM 251	R - Klasse (ex.) 17" 7 + 10 spoke design / 17" 7 + 10 Speichen Design	steel / Stahl, Alu			
BM 461/463 * 6+15-hole rim / 6+15-Loch-Felge	G - Klasse	steel / Stahl, Alu			



SWAG 10 91 8913



SWAG 10 92 3933

to fit / passend für			Ref. no. / Vergl.-Nr.	SWAG no.	Remarks / Anmerkungen
<b>MERCEDES-BENZ</b>					
BM 163	ML	steel / Stahl, Alu	000 990 49 07	<b>10 91 8913</b>	M14 x 1,5 x 26,5/49 SW 17 / G 10.9 / Ku / dacromet spherical collar radius 14 mm / Kugelbund Radius 14 mm
BM 164	ML 17" 7 + 10 spoke design / 17" 7 + 10 Speichen Design	alloy rim / Alufelge	(000 990 72 07) (211 401 03 70) (000 990 83 07 S1)		
BM 169	A - Klasse	steel / Stahl, Alu			
BM 172	SLK 55 AMG	steel / Stahl, Alu			
BM 197	SLS	alloy rim / Alufelge			
BM 199	SLR	alloy rim / Alufelge			



BM 204	C - Klasse (ex.) 19" AMG alloy rim / Alufelge	steel / Stahl, Alu	000 990 49 07 (000 990 72 07)	<b>10 91 8913</b>	M14 x 1,5 x 26,5/49
BM 207	E - Klasse Coupe / CLK	steel / Stahl, Alu	(211 401 03 70)		SW 17 / G 10.9 / Ku / dacromet
BM 209	CLK (ex.) AMG Black Series	alloy rim / Alufelge	(000 990 83 07 S1)		spherical collar radius 14 mm /
BM 211	E - Klasse	steel / Stahl, Alu			Kugelbund Radius 14 mm
BM 212	E - Klasse	steel / Stahl, Alu			
BM 218	CLS - Klasse	steel / Stahl, Alu			
BM 218.9	CLS - Shooting Brake	steel / Stahl, Alu			
BM 219	CL - Klasse	steel / Stahl, Alu			
BM 230	SL - Klasse	steel / Stahl, Alu			
BM 231	SL 63 AMG	steel / Stahl, Alu			
BM 245	B - Klasse	steel / Stahl, Alu			
BM 251	R - Klasse 17" 7 + 10 spoke design/ 17" 7 + 10 Speichen Design	alloy rim / Alufelge			
BM 639	Viano / Vito (ch.) → 458173	steel / Stahl, Alu			
BM 172	SLK	alloy rim / Alufelge 9 spoke/Speichen 16"	000 990 51 07 (000 990 35 07)	<b>10 92 3933</b>	M14 x 1,5 x 24/51,1
BM 211	E - Klasse	alloy rim / Alufelge 5 spoke/Speichen 17"			G 10.9 / Ku / geomet



SWAG 10 92 3933



SWAG 10 92 4645



SWAG 10 92 9196



SWAG 10 94 5757



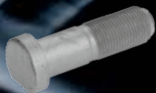
SWAG 99 90 3176



SWAG 99 90 8237

to fit / passend für			Ref. no. / Vergl.-Nr.	SWAG no.	Remarks / Anmerkungen
<b>MERCEDES-BENZ</b>					
BM 216	CL 500 / USA, CL 63 AMG	alloy rim / Alufelge 7 spoke/Speichen 17"	000 990 51 07 (000 990 35 07)	<b>10 92 3933</b>	M14 x 1,5 x 24/51,1 G 10.9 / Ku / geomet
BM 221	S - Klasse (ch.) → A 293047	alloy rim / Alufelge 5 + 7 spoke/Speichen 17"			
BM 166	GL / ML all/alle	alloy rim / Alufelge	000 990 76 07	<b>10 94 5757</b>	M14 x 1,5 x 19/63
BM 204	GLK all/alle	alloy rim / Alufelge			G 9.8 / Ku / corrolube
BM 217	367, 376, 382, 384, 385,	alloy rim / Alufelge			
BM 222	S-Klasse all/alle	alloy rim / Alufelge			

BM 251	R-Klasse 06/2013 →	alloy rim / Alufelge			
BM 216	CL 500 / 600 / 63 / 65 AMG	alloy rim / Alufelge	000 990 54 07	<b>10 92 9196</b>	M14 x 1,5 x 19/68 G 10.9 / Ku / corrolube
BM 221	S - Klasse	alloy rim / Alufelge	(000 990 22 07)		
BM 240	Maybach 57 / 62 / S (ch.) A 001456 →	alloy rim / Alufelge	(000 990 76 07)		
BM 901	208CDI, 211CDI, 213CDI		901 401 00 70	<b>10 92 4645</b>	M14 x 1,5 x 30 dacromet SA 520217 01/02/04
BM 902	208CDI, 211CDI, 213CDI, 214, 216CDI				
BM 903	308CDI, 311CDI, 313CDI, 314, 316CDI				
BM 601	207 D, 208/D, 209 D, 210/D 642109 →	steel rim / Stahlfelge	601 401 02 70 (601 401 03 70)	<b>99 90 8237</b>	M14 x 1,5 x 34/62 SW 19 / G 10.9 / Ku zinc-plated / verzinkt
BM 602	307 D, 308/D, 309 D, 310/D 642109 →	steel rim / Stahlfelge			
BM 901	208 D, 210 D, 212 D, 214	steel rim / Stahlfelge			
BM 902	208 D, 210 D, 212 D, 214	steel rim / Stahlfelge			
BM 903	308 D, 310 D, 312 D, 314	steel rim / Stahlfelge			
BM 309* * front / vorne	L/LK/LKO 406 DG, L/LK/LKO 407 D, L 408 DG, L/LF/LK/ LKO 408 G, L/LF/ LK/LKO	steel rim / Stahlfelge	309 401 02 71 (309 401 01 71) (319 401 06 71)	<b>99 90 3176</b>	M14 x 1,5 x 30/57 G 10.9 phosphated / phosphatiert



SWAG 10 91 2862



SWAG 99 90 1654



SWAG 99 90 3176

to fit / passend für		Ref. no. / Vergl.-Nr.	SWAG no.	Remarks / Anmerkungen
<b>MERCEDES-BENZ</b>				
BM 309*	409, L/LF 410, L/LK/LKO 508 DG, O 309, B/D	309 401 02 71 (309 401 01 71)	<b>99 90 3176</b>	M14 x 1,5 x 30/57 G 10.9 phosphated / phosphatiert
BM 310*	L/LF/LK 608 D, O 309 D	(319 401 06 71)		
BM 313*	O 309 D	(319 401 08 71)		
BM 602.367, 377*	307 D	(319 401 09 71)		
BM 611*	407 D, 409 D, 410			
BM 667*	507 D, 510, 512 D			
BM 668*      * front / vorne	609 D, 612 D			

BM 670*	812 D, 814 D	steel rim / Stahlfelge	309 401 02 71	<b>99 90 3176</b>	M14 x 1,5 x 30/57
BM 901*	208 D, 212 D, 214	steel rim / Stahlfelge	(309 401 01 71)		G 10.9
BM 902*	208 D, 212 D, 214	steel rim / Stahlfelge	(319 401 06 71)		phosphated / phosphatiert
BM 903*	308 D, 312 D, 314	steel rim / Stahlfelge	(319 401 08 71)		
BM 904*	408 D, 410 D, 412 D, 414	steel rim / Stahlfelge	(319 401 09 71)		
BM 905 mit/with ABS*	616 CDI	steel rim / Stahlfelge			
* front / vorne					
BM 309.429	L 508 DG	steel / Stahl rear / hinten	314 402 00 71	<b>10 91 2862</b>	M18 x 1,5 x 30/68
BM 310.389	O 309	steel / Stahl rear / hinten	(324 401 00 71)		G 10.9 / dacromet
BM 310.329, 429	L 608 D	steel / Stahl rear / hinten			
BM 313.389	O 309 D	steel / Stahl rear / hinten			
BM 313.429	L 613 D	steel / Stahl rear / hinten			
BM 309.429	L 508 DG	steel / Stahl rear / hinten	314 402 00 71 S1	<b>99 90 1654</b>	M18 x 1,5 x 30/68
BM 310.389	O 309	steel / Stahl rear / hinten	(314 401 00 71)		G 10.9
BM 310.329, 429	L 608 D	steel / Stahl rear / hinten	(324 402 00 71)		phosphated / phosphatiert
BM 313.389	O 309 D	steel / Stahl rear / hinten			
BM 313.429	L 613 D	steel / Stahl rear / hinten			



SWAG 10 90 9805



SWAG 10 90 9806



SWAG 10 92 9466



SWAG 99 90 1471

to fit / passend für		Ref. no. / Vergl.-Nr.	SWAG no.	Remarks / Anmerkungen
<b>MERCEDES-BENZ</b>				
BM 309*	L/LK/LKO 406 DG, L/LK/LKO 407 D L/LF/LK/LKO 408 G, L/LF/ LK/LKO 409, L/LF/LK 410 L/LK/LKO 508 DG, O 309 B/D	steel rim / Stahlfelge	309 402 02 71 (309 402 01 71) (319 402 01 71) (319 402 03 71) (319 402 04 71)	<b>99 90 1471</b> M14 x 1,5 x 32/68 G 10.9 phosphated / phosphatiert
BM 310*	L/LK 608 D, O 309 D	steel rim / Stahlfelge		
BM 313*	L 613 D, O 309 D	steel rim / Stahlfelge		
BM 611*	407 D, 409 D, 410	steel rim / Stahlfelge		

BM 635*	L 613 D	steel rim / Stahlfelge	309 402 02 71	<b>99 90 1471</b>	M14 x 1,5 x 32/68
BM 667*	507 D, 510, 512 D	steel rim / Stahlfelge	(309 402 01 71)		G 10.9
BM 668*	609 D, 612 D, 614 D	steel rim / Stahlfelge	(319 402 01 71)		phosphated / phosphatiert
BM 669*	709 D, 711 D	steel rim / Stahlfelge	(319 402 03 71)		
BM 670*	812 D, 814 D	steel rim / Stahlfelge	(319 402 04 71)		
BM 672*	O 609 D	steel rim / Stahlfelge			
BM 901*	208 D, 212 D, 214	steel rim / Stahlfelge			
BM 902*	208 D, 212 D, 214	steel rim / Stahlfelge			
BM 903*	308 D, 312 D, 314	steel rim / Stahlfelge			
BM 904*	408 D, 412 D, 414	steel rim / Stahlfelge			
* rear / hinten					
BM 638	V-Klasse all/alle	alloy rim / Alufelge	638 401 01 71	<b>10 90 9806</b>	M14 x 1,5 x 29,5/74
BM 901 / 902 / 903	Sprinter all/alle	alloy rim / Alufelge			SW 19 G 10.9 / dacromet
BM 638	108 D, 110 D, 113, V 200, V 230/D Turbo, V 280	steel rim / Stahlfelge steel rim / Stahlfelge	638 401 02 71 (638 401 00 71)	<b>10 90 9805</b>	M14 x 1,5 x 25/46
					SW 19 / G 10.9 / Ku yellow zinc-plated / gelbverzinkt
BM 906	Sprinter all/alle	steel rim / Stahlfelge alloy rim / Alufelge (ex.) 6,5x16/6,5x17	000 990 24 07	<b>10 92 9466</b>	M14 x 1,5 x 58 SW 18 / G 10.9 / Ku / dacromet



SWAG 10 94 4869



SWAG 20 91 8903



SWAG 20 92 6744



SWAG 80 91 1939



SWAG 81 92 6587



SWAG 99 90 7065

to fit / passend für			Ref. no. / Vergl.-Nr.	SWAG no.	Remarks / Anmerkungen
<b>MERCEDES-BENZ</b>					
BM 906	Sprinter all/alle		000 401 18 72	<b>10 94 4869</b>	M14 x 1,5 H 18 / SW 19 / G 10 / Fb geomet
<b>MINI</b>					
MINI II	Mod. → 07/06	steel / Stahl, Alu	36 13 6 781 150 (36 13 0 141 574) (36 13 1 122 158) (36 13 1 126 014)	<b>20 91 8903</b>	M12 x 1,5x 26/50 SW 17 / G 10.9 / Ke / corrolube



MINI II	Mod. → 07/06	steel / Stahl, Alu	36 13 0 141 576	<b>99 90 7065</b>	M12 x 1,5x26/50 SW 17 / G 10.9 / Ke yellow zinc-plated / gelbverzinkt
MINI II MINI III	Mod. 07/06 →	steel / Stahl, Alu steel / Stahl, Alu	36 13 6 781 151 (36 13 6 774 896)	<b>20 92 6744</b>	M14 x 1,25 x 30,5 / 48,5 SW 17 / G 8.8 / Ke / corrolube
<b>mitsubishi</b>					
Carisma Colt I - VI Galant V Galant VI Lancer I - VI L 300 Space Wagon		steel rim / Stahlfelge steel rim / Stahlfelge steel rim / Stahlfelge steel rim / Stahlfelge steel rim / Stahlfelge steel rim / Stahlfelge steel rim / Stahlfelge	MR297927 (MA103087)	<b>80 91 1939</b>	M12 x 1,5 x 17 SW 21 / G 8 / Ke yellow zinc-plated / gelbverzinkt
ASX Galant Grandis L200 Lancer	04/10 → 07/06 → 01/04 → 01/96 → (ex.) 2,0 (K62T) 03/07 → (ex.) 1,3 (CSA)	alloy rim / Alufelge alloy rim / Alufelge alloy rim / Alufelge alloy rim / Alufelge alloy rim / Alufelge	MR455707	<b>81 92 6587</b>	M12 x 1,5 x 37,5 SW 21 / G 8 / Ke chromed / verchromt



SWAG 81 92 6587



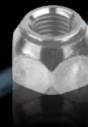
SWAG 80 93 3499

to fit / passend für		Ref. no. / Vergl.-Nr.	SWAG no.	Remarks / Anmerkungen
<b>MITSUBISHI</b>				
Outlander I / II	02/03 → 11/06	MR455707	<b>81 92 6587</b>	M12 x 1,5 x 37,5 SW 21 / G 8 / Ke chromed / verchromt
Pajero	12/90 → 04/04 (ex.) 2,6 (V12V), 2,5D(V14C), 2,5D(V14V), 3,0 (V21W), 2,8 (V26W), 2,6 (V32W) 2,5D(V34V), 2,8D(V36V) 2,4 (V41W)			
Pajero III	02/00 → 12/06			

Pajero IV	09/06 →	alloy rim / Alufelge	MR455707	<b>81 92 6587</b>	M12 x 1,5 x 37,5
Pajero Pinin	08/99 → 02/05	alloy rim / Alufelge			SW 21 / G 8 / Ke
Pajero Sport	08/98 →	alloy rim / Alufelge			chromed / verchromt
Space Star	06/98 → 12/04	alloy rim / Alufelge			
Space Wagon	07/98 → 01/04	alloy rim / Alufelge			
Carisma	07/95 → 10/97	steel / Stahl, Alu	MB911495	<b>80 93 3499</b>	M12 x 1,5 x 29,5/40/46,6
Colt IV / V / VI	04/92 →	steel / Stahl, Alu	(MB303869)		G 10.9 / dacromet
Eclipse I / II	04/91 → 04/99	steel / Stahl, Alu	(MB891852)		
Galant III / IV	06/84 → 10/92 (only front axle/Nur Vorderachse)	steel / Stahl, Alu			
Galant V / VI	11/92 → 10/04	steel / Stahl, Alu			
Grandis	10/05 →	steel / Stahl, Alu			
Lancer V / VI / VII / VIII	06/92 →	steel / Stahl, Alu			
Outlander I / II	02/03 →	steel / Stahl, Alu			
Pajero Pinin	03/99 →	steel / Stahl, Alu			
Sigma	12/90 → 07/96	steel / Stahl, Alu			
Space Runner	10/91 → 08/02	steel / Stahl, Alu			
Space Star	06/98 → 12/04 (only front axle/Nur Vorderachse)	steel / Stahl, Alu			



SWAG 80 93 3499



SWAG 82 91 1938

to fit / passend für			Ref. no. / Vergl.-Nr.	SWAG no.	Remarks / Anmerkungen
<b>MITSUBISHI</b>					
Space Wagon 2.0 (D08W)	10/83 → 04/91 (only front axle/Nur Vorderachse)	steel / Stahl, Alu	MB911495 (MB303869)	<b>80 93 3499</b>	M12 x 1,5 x 29,5/40/46,6 G 10.9 / dacromet
Space Wagon	05/91 →	steel / Stahl, Alu	(MB891852)		
3000 GT	06/92 → 08/99	steel / Stahl, Alu			
<b>NISSAN</b>					
200 SX (S 14)	94 →	steel rim / Stahlfelge	40224-21001	<b>82 91 1938</b>	M12 x 1,25 H 16 / SW 21 / G 6 / Ke zinc-plated / verzinkt
280 ZX (S 130)	78 → 83	steel rim / Stahlfelge	(40224-G9501)		
300 ZX (Z31)	84 → 89	steel rim / Stahlfelge			

350 Z (Z 33)	03 → 09	steel rim / Stahlfelge	40224-21001	<b>82 91 1938</b>	M12 x 1,25
Almera (N15/N16)	95 →	steel rim / Stahlfelge	(40224-G9501)		H 16 / SW 21 / G 6 / Ke
Almera Tino (V10M)	00 →	steel rim / Stahlfelge			zinc-plated / verzinkt
Bluebird (T11/T12)	85 → 90	steel rim / Stahlfelge			
Bluebird (U11/T72)	85 → 90	steel rim / Stahlfelge			
Cabstar (F22/F23)	85 →	steel rim / Stahlfelge			
Cherry (B11/B12)	78 → 82	steel rim / Stahlfelge			
King Cab (D21)	85 → 98	steel rim / Stahlfelge			
Laurel (C32)	84 → 90	steel rim / Stahlfelge			
Maxima (A32)	94 → 00	steel rim / Stahlfelge			
Micra (K10/K11)	82 → 03	steel rim / Stahlfelge			
Murano (Z51)	08 →	steel rim / Stahlfelge			
Navara (D40)	05 →	steel rim / Stahlfelge			
Pathfinder (R50/R51)	97 →	steel rim / Stahlfelge			
Patrol (160/Y60/Y61)	79 →	steel rim / Stahlfelge			
Pick Up (D22)	98 →	steel rim / Stahlfelge			
Prairie (M10/M11)	83 → 94	steel rim / Stahlfelge			
Primera (P10/P11/P12)	90 →	steel rim / Stahlfelge			
Primera Waggon (W10/W11/W12)	90 →	steel rim / Stahlfelge			



SWAG 60 90 2062



SWAG 60 92 6747



SWAG 82 91 1938



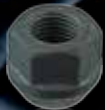
SWAG 84 93 3926



SWAG 99 90 7066

to fit / passend für			Ref. no. / Vergl.-Nr.	SWAG no.	Remarks / Anmerkungen
<b>NISSAN</b>					
Qashqai (J10)	07 →	steel rim / Stahlfelge	40224-21001	<b>82 91 1938</b>	M12 x 1,25
Serena (C23M)	92 →	steel rim / Stahlfelge	(40224-G9501)		H 16 / SW 21 / G 6 / Ke
Sunny (N13/N14)	85 → 95	steel rim / Stahlfelge			zinc-plated / verzinkt
Sunny Waggon (Y10)	90 → 98	steel rim / Stahlfelge			
Terrano 2 (R20)	93 →	steel rim / Stahlfelge			
Urvan (E23/E24)	80 →	steel rim / Stahlfelge			
X-Trail (T30/T31)	01 →	steel rim / Stahlfelge			
Interstar	X 70 02/02 → (ex.) 15"	steel / Stahl, Alu	40254-00QAF	<b>60 92 6747</b>	M14 x 1,5 x 30 / SW 19

Primastar	X 83 03 →	steel / Stahl, Alu			G 8.8 / Ke / dacromet zinc-plated / verzinkt
Micra (K12)	02 →	steel / Stahl, Alu	40222-BC40A	<b>60 90 2062</b>	M12 x 1,5 x 25/51 SW 19 / G 10.9 / Ke zinc-plated / verzinkt
Kubistar (X76 )	04/03 →	steel / Stahl, Alu	(40254-00QAB)		
<b>OPEL</b>					
Pixo	03/09 →	steel / Stahl	36181-4A0A2	<b>84 93 3926</b>	M12 x 1,25 H 17 / SW 19 / G 8 / Ke zinc-plated / verzinkt
Agila A	00 → 08 (ch.) → 3G999999	steel rim / Stahlfelge	4705 171		
	00 → 08 all/alle	alloy rim / Alufelge	09207055		
Agila A/B		steel / Stahl, Alu	1008 504	<b>99 90 7066</b>	M12 x 1,5 x 22/47,5 SW 17 / G 10.9 / Ke zinc-plated / verzinkt
Ascona C		steel / Stahl, Alu	90473457		
Astra F/G/H		steel / Stahl, Alu	(1008 501)		
Calibra		steel / Stahl, Alu	(90342774)		
Corsa A/B/C/D		steel / Stahl, Alu			
Kadett D/E		steel / Stahl, Alu			
Meriva A/B		steel / Stahl, Alu			
Omega A/B		steel / Stahl, Alu			
Senator B		steel / Stahl, Alu			
Signum		steel / Stahl, Alu			



SWAG 40 94 5063



SWAG 40 94 5788



SWAG 40 94 5789



SWAG 60 92 6747



SWAG 70 91 9341



SWAG 99 90 7066

to fit / passend für		Ref. no. / Vergl.-Nr.	SWAG no.	Remarks / Anmerkungen
<b>OPEL</b>				
Tigra A/B		1008 504	<b>99 90 7066</b>	M12 x 1,5 x 22/47,5 SW 17 / G 10.9 / Ke zinc-plated / verzinkt
Vectra A/B/C		90473457		
Zafira A/B	steel / Stahl, Alu	(1008 501) (90342774)		
Astra J		1008 010	<b>40 93 8008</b>	M12 x 1,5 H 23 SW 19 / G 10 / Ke zinc-plated / verzinkt
Ampera		09598799		
Cascada	steel / Stahl, Alu			
Zafira C	steel / Stahl, Alu			



Mokka Sintra	13 → (ch.) → EB999999 96 → 99	steel rim / Stahlfelge	1008 516 09594681	<b>40 94 5788</b>	M12 x 1,5 H 23 SW 19 / G 8 / Ke / geomet
Ampera GT Cabrio Mokka	11 → (ch.) DU000001 → 06 → 11 (ch.) 91000001 → 13 → (ch.) → EB999999	alloy rim / Alufelge	1008 013 09594682 (4817 533)	<b>40 94 5789</b>	M12 x 1,5 H 36 SW 19 / G 10 / Ke / geomet
Antara	06 →	alloy rim / Alufelge	4803 304 94837389	<b>20 90 3375</b>	M12 x 1,5 H 30 / SW 19 / G 8 / Ke zinc-plated / verzinkt
Combo D	11 →	steel / Stahl, Alu	1008 011 95510864	<b>70 91 9341</b>	M12 x 1,25 x 22/48,5 SW 17 / G 8.8 / Ke / geomet
Movano A Movano B Vivaro	04 → front wheel drive / Frontantrieb	steel / Stahl, Alu 16" steel / Stahl, Alu steel / Stahl, Alu	4418 227 93858987 (4412 908) (4414 784) (91169857) (93853173)	<b>60 92 6747</b>	M14 x 1,5 x 30 SW 19 / G 8.8 / Ke / dacromet
Insignia	08 →		6008 963	<b>40 94 5063</b>	M14 x 1,5 SW 22 / G 9 / Ke blue zinc-plated / blau verzinkt



SWAG 70 91 2706



SWAG 70 91 2707



SWAG 80 91 1939



SWAG 81 92 6590



SWAG 81 93 2060

to fit / passend für			Ref. no. / Vergl.-Nr.	SWAG no.	Remarks / Anmerkungen
<b>PEUGEOT</b>					
106	91 → 08/02 → O 09428	steel rim / Stahlfelge	5405.55	<b>62 91 1616</b>	M12 x 1,25 x 26/52 SW 19 / G 10.9 / Ke zinc-plated / verzinkt
205	83 → 96	steel rim / Stahlfelge	(5405.35)		
206	98 → 08/02 → O 09428	steel rim / Stahlfelge			
306	93 → 01	steel rim / Stahlfelge			
307	01 → 08/02 → O 09428	steel rim / Stahlfelge			
309	86 → 96	steel rim / Stahlfelge			
405	88 → 96	steel rim / Stahlfelge			
406	96 → 08/02 → O 09428	steel rim / Stahlfelge			

605 Partner	90 → 96 → 08/02 → O 09428	steel rim / Stahlfelge steel rim / Stahlfelge	5405.55 (5405.35)	<b>62 91 1616</b>	M12 x 1,25 x 26/52 SW 19 / G 10.9 / Ke zinc-plated / verzinkt
107	05 →	alloy rim / Alufelge	5405.80	<b>81 92 6590</b>	M12 x 1,5 x 21/59,5 SW 17 / G 10.9 / Ke / dacromet
107	05 →	steel rim / Stahlfelge	5405.77	<b>81 93 2060</b>	M12 x 1,5 x 20/42 SW 17 / G 10.9 / Ke / geomet
ION 4008 4007	11/10 → 03/12 → 02/07 →	steel rim / Stahlfelge steel rim / Stahlfelge steel rim / Stahlfelge	5405.81	<b>80 91 1939</b>	M12 x 1,5 x 17 SW 21 / G 8 / Ke yellow zinc-plated / gelbverzinkt
J5	82 → 94	steel rim / Stahlfelge	5405.30	<b>70 91 2706</b>	M14 x 1,5 x 30/52 SW 22 / G 8.8, Ke / dacromet
806 807 Expert I + II	94 → 02 02 → → O 09435 95 → 07 → O 09428	steel rim / Stahlfelge steel rim / Stahlfelge steel rim / Stahlfelge	5405.48	<b>70 91 2707</b>	M14 x 1,5 x 25/52 SW 19 / G 8.8 / Ke / dacromet
106 Restyling 206 / SW 206 CC 206+	05/96 → 07/03 / O 09429 → 08/98 → 08/98 → / O 09429 → 01/09 →	steel rim / Stahlfelge steel rim / Stahlfelge steel rim / Stahlfelge steel rim / Stahlfelge	5405.66 (5405.84)	<b>62 92 1175</b>	M 12 x 1,25 x 18/47 SW 17 / G 10.9 / Ke / dacromet



SWAG 62 92 1175



SWAG 62 92 9208



SWAG 81 92 6587

to fit / passend für		Ref. no. / Vergl.-Nr.	SWAG no.	Remarks / Anmerkungen
<b>PEUGEOT</b>				
207 (A7)	02/06 →	5405.66	<b>62 92 1175</b>	M 12 x 1,25 x 18/47 SW 17 / G 10.9 / Ke / dacromet
208	03/12 →	(5405.84)		
301	10/12 →			
307	06/01 → 04/05 / O 09429 →			
307 Restyling	05/05 → 08/07			
308 (T9) II	09/13 →			
406 / SW Restyling	04/99 → 06/05 / O 09429 →			
406 Coupe Restyling	04/99 → 06/05			

508	11/10 →	steel rim / Stahlfelge	5405.66	<b>62 92 1175</b>	M 12 x 1,25 x 18/47 SW 17 / G 10.9 / Ke / dacromet
1007	04/05 → 12/09	steel rim / Stahlfelge	(5405.84)		
2008	03/13 →	steel rim / Stahlfelge			
Expert III	01/07 → / O 11305 →	steel rim / Stahlfelge			
Partner I	07/96 → 11/02 / O 09429 →	steel rim / Stahlfelge			
Partner II	12/02 → 03/08	steel rim / Stahlfelge			
4008	03/12 →	alloy rim / Alufelge	5405.82	<b>81 92 6587</b>	M12 x 1,5 x 37,5 SW 21 / G 8 / Ke chromed / verchromt
4007	02/07 →	alloy rim / Alufelge			
106 Restyling	05/96 → 07/03 / O 08576 →	alloy rim / Alufelge	5405.67	<b>62 92 9208</b>	M12 x 1,25 x 17/57,15 SW 17 / G 10.9 / Fb / geomet
206	08/98 → 12/08 / O 08610 →	alloy rim / Alufelge			
206+	01/09 →	alloy rim / Alufelge			
207 (A7)	02/06 →	alloy rim / Alufelge			
208	03/12 →	alloy rim / Alufelge			
301	10/12 →	alloy rim / Alufelge			
307 Restyling	05/05 → 08/07 / O 10367 →	alloy rim / Alufelge			
308	09/07 → 08/13	alloy rim / Alufelge			
308 (T9) II	09/13 →	alloy rim / Alufelge			
406 / SW / Coupe Restyling	04/99 → 06/05 / O 09429 →	alloy rim / Alufelge			



SWAG 62 93 2439



SWAG 62 93 2440



SWAG 62 93 2451



SWAG 62 92 9208



SWAG 62 93 0400

to fit / passend für			Ref. no. / Vergl.-Nr.	SWAG no.	Remarks / Anmerkungen
<b>PEUGEOT</b>					
407	05/04 →	alloy rim / Alufelge	5405.67	<b>62 92 9208</b>	M12 x 1,25 x 17/57,15 SW 17 / G 10.9 / Fb / geomet
508	11/10 →	alloy rim / Alufelge			
607	05/00 → 11/04 / O 09429 →	alloy rim / Alufelge			
607 Lifting	12/04 → 09/10	alloy rim / Alufelge			
1007	04/05 → 12/09	alloy rim / Alufelge			
2008	03/13 →	alloy rim / Alufelge			
3008	06/09 →	alloy rim / Alufelge			
5008	09/09 →	alloy rim / Alufelge			

Expert III Partner I Partner II Partner Tepee III RCZ	01/07 → 07/96 → 11/02 / O 09429 → 12/02 → 03/08 04/08 → 03/10 →	alloy rim / Alufelge 16" inch/Zoll alloy rim / Alufelge alloy rim / Alufelge alloy rim / Alufelge 16" inch/Zoll alloy rim / Alufelge	5405.67	<b>62 92 9208</b>	M12 x 1,25 x 17/57,15 SW 17 / G 10.9 / Fb / geomet
308 407 508 3008 5008 Expert III Expert Tepee Partner II	08 → 04 → 11/10 → 09 → 09/09 → 07 → / → O 11304 01/07 → / → O 11304 08 →	steel rim / Stahlfelge steel rim / Stahlfelge steel rim / Stahlfelge steel rim / Stahlfelge steel rim / Stahlfelge steel rim / Stahlfelge steel rim / Stahlfelge steel rim / Stahlfelge	16 087 344 80 (5405.72)	<b>62 93 0400</b>	M12 x 1,25 x 24/49,5 SW 17 / G 10.9 / Ke / geomet
807 Expert I + II	02 → O 9436 → 09988 95 → 07 O 9429 →	steel rim / Stahlfelge steel rim / Stahlfelge	5405.68	<b>62 93 2439</b>	M14 x 1,5 x 20/56,5 SW 17 / G 10.9 / Ke / geomet
807	02 → O 9989 → 02 → O 9436 →	steel rim / Stahlfelge alloy rim / Alufelge	5405.69	<b>62 93 2451</b>	M14 x 1,5 x 20/57 SW 17 / G 10.9 / Ke / geomet
Boxer I + II	94 → 06 payload / Nutzlast 1,0t + 1,4t	steel rim / Stahlfelge	5405.75	<b>62 93 2440</b>	M14 x 1,5 x 19/53 SW 24 / G 10.9 / Ke / geomet



SWAG 38 91 9656



SWAG 60 90 2062



SWAG 62 93 2441



SWAG 62 93 2442



SWAG 62 93 2450



SWAG 99 90 1214

to fit / passend für			Ref. no. / Vergl.-Nr.	SWAG no.	Remarks / Anmerkungen
<b>PEUGEOT</b>					
Boxer I + II	94 → 06 payload / Nutzlast 1,8t	steel rim / Stahlfelge	5405.76	<b>62 93 2450</b>	M 16 x 1,5 x 23/57 SW 24 / G 10.9 / Ke / geomet
Boxer III	06 → payload / Nutzlast 1,2t → 1,6t	steel rim / Stahlfelge alloy rim / Alufelge Alu 15"	5405.78 (5405.88)	<b>62 93 2441</b>	M14 x 1,5 x 22/62 SW 21 / G 10.9 / Ke / geomet
Boxer III	06 → payload / Nutzlast 1,6t →	steel rim / Stahlfelge alloy rim / Alufelge Alu 16"	5405.79	<b>62 93 2442</b>	M16 x 1,5 x 25/64 SW 21 / G 10.9 / Ke / geomet
<b>PORSCHE</b>					



911 / 912 924 S 924 Turbo 944	Mod. 65 → 83 Mod. 86 → Mod. 80 →		N 020 112 1 (900 182 001 01)	<b>99 90 1214</b>	M14 x 1,5 H 20 / SW 19 / G 8 / Ku phosphated / phosphatiert 5-hole steel rim / 5-Loch Stahlfelge
Boxster Cayman 911 Carrera 911 Turbo / GT2 911 GT3 911	(986/987) Mod. 00 → Mod. 05 → (996) Mod. 00 → (996) Mod. 01 → 05 (996) Mod. 04 → 05 (997) Mod. 05 →	alloy rim / Alufelge alloy rim / Alufelge alloy rim / Alufelge alloy rim / Alufelge alloy rim / Alufelge	997 361 203 01 (996 361 203 01)	<b>38 91 9656</b>	M14 x 1,5 x 44 / 61 SW 19 / G 10.9 / Ku / dacromet

## RENAULT

Clio I Clio II Espace Espace Kangoo I Laguna I Mégane I Mégane Coupe I	(B/C 57) (BB,CB,LB,SB) (J/S 11) (J/S 11) (F/K C0) (B/K 56) (ex.) 2,0 16V / 3,0 (B/S A0) (DA0)	steel rim / Stahlfelge 85 → 98 steel rim / Stahlfelge 98 → steel rim / Stahlfelge 85 → 90 alloy rim / Alufelge steel rim / Stahlfelge 98 → 08 steel rim / Stahlfelge 94 → 01 steel rim / Stahlfelge 96 → 02 steel rim / Stahlfelge 96 → 02	82 00 030 701 (77 00 437 514) (77 00 668 275)	<b>60 90 2062</b>	M12 x 1,5 x 25/51 SW 19 / G 10.9 / Ke zinc-plated / verzinkt
---------------------------------------------------------------------------------------------	--------------------------------------------------------------------------------------------------------------------	-----------------------------------------------------------------------------------------------------------------------------------------------------------------------------------------------------------------------------------------------------------------	-----------------------------------------------------	-------------------	--------------------------------------------------------------------



SWAG 60 90 2062



SWAG 60 92 7756



SWAG 60 92 7793



SWAG 99 90 7065

to fit / passend für			Ref. no. / Vergl.-Nr.	SWAG no.	Remarks / Anmerkungen
<b>RENAULT</b>					
Mégane Scénic I	(FA0)	steel rim / Stahlfelge 11/96 → 02	82 00 030 701	<b>60 90 2062</b>	M12 x 1,5 x 25/51 SW 19 / G 10.9 / Ke zinc-plated / verzinkt
Rapid	(F40)	steel rim/ Stahlfelge 86 → 05/93	(77 00 437 514)		
Renault 5	(B/C 40)	steel rim / Stahlfelge 85 → 91	(77 00 668 275)		
Renault 19	(B/C/L/S 53, 3/4/5 53)	steel rim / Stahlfelge 89 → 96			
Renault 19 Cabrio	(D53,853)	steel rim/ Stahlfelge 02/91 → 96			
Renault 21	(B/K/L/S 48)	steel rim / Stahlfelge 87 → 94			
Safrane	(B54) 2,0i / 2,2i	steel rim / Stahlfelge 92 → 00			
Twingo I	(C/S 06)	steel rim / Stahlfelge 93 → 07			

Clio III	(DA0)	steel rim / Stahlfelge 05 →	82 00 610 460	<b>99 90 7065</b>	M12 x 1,5 x 26/50 SW 17 / G 10.9 / Ke yellow zinc-plated / gelbverzinkt
Fluence	(L30)	steel rim / Stahlfelge 10 →	(82 00 473 313)		
Kangoo II	(FA0)	steel rim / Stahlfelge 08 →			
Laguna II	(J11,S11)	steel rim / Stahlfelge 02 → 07			
Mégane II	(F40) / (ch.) MOD0602 →	steel rim / Stahlfelge			
Mégane III	(B/D/K Z0)	steel rim / Stahlfelge 08 →			
Mégane Generation	(B30)	steel rim / Stahlfelge 10 →			
Modus	(FC0,KC0)	steel rim / Stahlfelge 04 →			
Scénic II	(FC0,KC0)	steel rim / Stahlfelge 03 →			
Scénic III	(JZ 0/1)	steel rim / Stahlfelge 09 →			
Twingo II	(FC0,KC0)	steel rim / Stahlfelge 07 →			
Wind	(E4M)	steel rim / Stahlfelge 10 →			
Avantime	(D/J E0)	steel / Stahl, Alu 01 → 03	82 00 426 593	<b>60 92 7793</b>	M14 x 1,5 x 26/51 SW 19 / G 10.9 / Ke chromed / verchromt
Espace III	(JE0)	steel / Stahl, Alu 91 → 01	(77 00 437 518)		
Espace IV	(JK 0/1)	steel / Stahl, Alu 01 →	(77 00 785 357)		
Laguna I	(B/K 56) 2,0 16V / 3,0	steel rim / Stahlfelge 94 → 01	(82 00 030 702)		
Vel Satis	(BJ0)	steel / Stahl, Alu 02 →	(82 00 030 703)		
Clio III	(DA0)	alloy rim / Alufelge 05 →	82 00 473 353	<b>60 92 7756</b>	M12 x 1,5 x 26/53 SW 17 / G 10.9 / Ke / dacromet
Kangoo II	(FA0)	alloy rim / Alufelge 07 →	(82 00 025 716)		
Laguna II	(J11,S11)	alloy rim / Alufelge 02 → 07	(82 00 294 820)		


**SWAG 60 92 6747**

**SWAG 60 92 7756**

**SWAG 60 93 6254**

**SWAG 60 94 8925**

to fit / passend für			Ref. no. / Vergl.-Nr.	SWAG no.	Remarks / Anmerkungen
<b>RENAULT</b>					
Mégane II	(F40)	alloy rim / Alufelge 02 →	82 00 473 353	<b>60 92 7756</b>	M12 x 1,5 x 26/53
Modus	(FC0,KC0)	alloy rim / Alufelge 04 →	(82 00 025 716)		SW 17 / G 10.9 / Ke / dacromet
Scénic II	(FC0,KC0)	alloy rim / Alufelge 03 →	(82 00 294 820)		
Twingo II	(FC0,KC0)	alloy rim / Alufelge 07 →	(82 00 473 425) (82 00 623 085)		
Master II	98 → 10	(ex.) 15"	82 00 639 129	<b>60 92 6747</b>	M14 x 1,5 x 30
Master III	10 →	steel / Stahl, Alu	(82 00 366 209)		SW 19 / G 8.8 / Ke / dacromet

Trafic II	07/03 →	steel rim / Stahlfelge	82 00 639 129	<b>60 92 6747</b>	M14 x 1,5 x 30
Trafic II	01 →	alloy rim / Alufelge	(82 00 366 209)		SW 19 / G 8.8 / Ke / dacromet
Fluence	(L30)	alloy rim / Alufelge 10 →	40 22 298 10R	<b>60 93 6254</b>	M12 x 1,5 x 26/53
Kangoo II	(FA0)	alloy rim / Alufelge 08 →			SW 17 / G 10.9 / Ke
Mégane III	(B/D/K Z0)	alloy rim / Alufelge 08 →			zinc-plated / verzinkt
Mégane Generation	(B30)	alloy rim / Alufelge 10 →			
Scénic III	(JZ 0/1)	alloy rim / Alufelge 09 →			
Captur	→ 07/13	alloy rim / Alufelge +	77 03 003 008	<b>60 94 8925</b>	M12 x 1,5 x 50,5
Clio II	09/98 →	steel rim / Stahlfelge			SW 17 / G 9.8 / Ke
Clio IV	13 →				zinc-lamella coated /
Dokker	11/12 →				zinklamellenbeschichtet
Duster	10 →				
Kadjar	06/15 →				
Logan I	04 → , 15 inch/Zoll				
Logan II	13 →				
Logdy	→ 02/14				
Lutecia	09/98 →				
Mégane III	08 →				
Sandero I	11/07 → , 15 inch/Zoll				



SWAG 60 94 6192



SWAG 60 94 8925

to fit / passend für		Ref. no. / Vergl.-Nr.	SWAG no.	Remarks / Anmerkungen
<b>RENAULT</b>				
Sandero II	11/13 →	77 03 003 008	<b>60 94 8925</b>	M12 x 1,5 x 50,5 SW 17 / G 9.8 / Ke zinc-lamella coated / zinklamellenbeschichtet
Scénic / XMod III	02/09 →			
Twingo II	09/14 → (ex.) 14 inch/Zoll			
Twizy	04/12 →			
Zoe	12 →			
Captur	→ 07/13	40 22 272 72R	<b>60 94 6192</b>	M12 x 1,5 x 53
Clio II	98 → 05	alloy rim / Alufelge		SW 17 / G 8.8 / Ke
Clio III	10/11 →			

Clio IV	13 →	alloy rim / Alufelge	40 22 272 72R	<b>60 94 6192</b>	M12 x 1,5 x 53
Dokker	→ 02/14, 15 inch/Zoll	alloy rim / Alufelge			SW 17 / G 8.8 / Ke
Duster	10 →	alloy rim / Alufelge			zinc-nickel-coated /
Fluence	10 →	alloy rim / Alufelge			Zink-Nickel-beschichtet
Grand Modus	10/11 →	alloy rim / Alufelge			
Kangoo Be Bop	02/09 →	alloy rim / Alufelge			
Kangoo Rapid / Express	10/08 → 12/12, 15 inch/Zoll	alloy rim / Alufelge			
Logan I	04 →	alloy rim / Alufelge			
Logan II	13 →	alloy rim / Alufelge			
Logdy	→ 02/14	alloy rim / Alufelgem			
Mégane II	02 → 08	alloy rim / Alufelge			
Mégane III	05/12 → 10/13, 16 / 17 / 18 inch/Zoll	alloy rim / Alufelge			
Mégane Generation	10 →	alloy rim / Alufelge			
Modus	10/11 →	alloy rim / Alufelge			
Sandero I	11/07 →	alloy rim / Alufelge			
Sandero II	11/13 →	alloy rim / Alufelge			
Scénic / XMod III	05/12 → 10/13	alloy rim / Alufelge			
Twingo II	10/11 →	alloy rim / Alufelge			



SWAG 40 94 5063



SWAG 60 93 6255



SWAG 60 93 6293



SWAG 60 94 6192



SWAG 80 91 1939



SWAG 81 92 6587



SWAG 99 90 6963

to fit / passend für			Ref. no. / Vergl.-Nr.	SWAG no.	Remarks / Anmerkungen
<b>RENAULT</b>					
Twingo III	09/14 → 14 inch/Zoll	alloy rim / Alufelge	40 22 272 72R	<b>60 94 6192</b>	M12 x 1,5 x 53
Twizy	→ 12/13	alloy rim / Alufelge			SW 17 / G 8.8 / Ke
Wind	10/11 →	alloy rim / Alufelge			zinc-nickel-coated /
Zoe	01/12 → 10/13	alloy rim / Alufelge			Zink-Nickel-beschichtet
Laguna III	(BT/DT/KT 0/1)	steel rim / Stahlfelge 07→	82 00 620 058	<b>60 93 6255</b>	M14 x 1,5 x 23/48
Latitude	(L70)	steel rim / Stahlfelge 11→			SW 17 / G 10.9 / Ke
Laguna III	(BT/DT/KT 0/1)	alloy rim / Alufelge 07→	82 00 473 363	<b>60 93 6293</b>	M14 x 1,5 x 23/48



Latitude	(L70)	alloy rim / Alufelge 11→	82 00 473 363	<b>60 93 6293</b>	SW 17 / G 10.9 / Ke zinc-plated / verzinkt
<b>SAAB</b>					
9-5II	10 →		95 98 177	<b>40 94 5063</b>	M14 x 1,5 SW 22 / G 9 / Ke blue zinc-plated / blau verzinkt
<b>SCION</b>					
TC ANT10	05/06 →	alloy rim / Alufelge 11 →	90942-01007	<b>80 91 1939</b>	M12 x 1,5 x 17 SW 21 / G 8 Ke yellow zinc-plated / gelbverzinkt
XA NCP61	04/03 →				
XB NCP31	04/03 →				
XB AZE151	03/07 →				
TC ANT10	05/04 →	alloy rim / Alufelge	90942-01033	<b>81 92 6587</b>	M12 x 1,5 x 37,5 SW 21 / G 8 / Ke chromed / verchromt
<b>SEAT</b>					
Arosa	97 → 04	steel / Stahl, Alu	3A0 601 139	<b>99 90 6963</b>	M12 x 1,5 x 24/45,5 SW 17 / G 8.8 / Ku yellow zinc-plated / gelbverzinkt
Cordoba/Vario	93 → 02	steel / Stahl, Alu	(321 601 139 C)		
Ibiza	93 → 02	steel / Stahl, Alu			
Inca	96 → 03	steel, Stahl			
Toledo	92 → 99	Stahl / Alu 4 Loch mit 100er steel, Stahl / Alu 4-hole rim with			



SWAG 30 94 5850



SWAG 32 90 4912



SWAG 32 91 7818



SWAG 99 90 9801

to fit / passend für			Ref. no. / Vergl.-Nr.	SWAG no.	Remarks / Anmerkungen
<b>SEAT</b>					
Mii	11 →	steel, Stahl / Alu	WHT 004 899	<b>30 94 5850</b>	M12 x 1,5 / SW 17 / G 10.9 / Ku zinc-plated / verzinkt
Alhambra	10 →	steel, Stahl / Alu	WHT 002 437	<b>99 90 9801</b>	M14 x 1,5 x 27/47,5 SW 17 / G 8.8 / Ku zinc-plated / verzinkt silver / silber
Altea	04 →	steel, Stahl / Alu	(431 601 139 A)		
Cordoba	03 →	steel, Stahl / Alu	(443 601 139 A)		
Exeo / ST	09 →	steel, Stahl / Alu	(443 601 139 C)		
Ibiza	02 →	steel, Stahl / Alu	(8D0 601 139 A)		
Leon	00 →	steel, Stahl / Alu	(8D0 601 139 D)		

Toledo I	91 → 98	Stahl / Alu 5 Loch mit 100er Lochkreis / 100 mm steel, Stahl / Alu 4-hole rim with	WHT 002 437 (431 601 139 A) (443 601 139 A) (443 601 139 C)	<b>99 90 9801</b>	M14 x 1,5 x 27/47,5 SW 17 / G 8.8 / Ku zinc-plated / verzinkt silver / silber
Toledo II / III	99 →	Stahl, steel / Alu			
Alhambra	96 → 00	steel, Stahl / Alu	701 601 139 B (7M0 601 139 A) (701 601 139)	<b>32 90 4912</b>	M14 x 1,5 x 34/58 SW 19 / G 10.9 / Ku phosphated / phosphatiert
Alhambra	01 →	steel, Stahl / Alu	7M3 601 139 B	<b>32 91 7818</b>	M14 x 1,5 x 34/62/ SW 19 / G 10.9 / Ku / dacromet

## ŠKODA

Fabia	00 →	steel, Stahl / Alu	WHT 002 437	<b>99 90 9801</b>	M14 x 1,5 x 27/47,5
Octavia	97 →	steel, Stahl / Alu	(431 601 139 A)		SW 17 / G 8.8 / Ku
Rapit	12 →	steel, Stahl / Alu	(443 601 139 A)		zinc-plated / verzinkt
Roomster	04 →	steel, Stahl / Alu	(443 601 139 C)		
Superb (3U)	02 →	steel, Stahl / Alu			
Superb (3T)	08 →	steel, Stahl / Alu			
Yeti	09 →	steel, Stahl / Alu			
Citigo	11 →	steel / Stahl, Alu	WHT 004 899	<b>30 94 5850</b>	M12 x 1,5 / SW 17 / G 10.9 / Ku zinc-plated / verzinkt



SWAG 12 92 7578



SWAG 80 91 1939



SWAG 82 91 1938



SWAG 80 93 3499



SWAG 84 93 3926



SWAG 99 90 7066

to fit / passend für			Ref. no. / Vergl.-Nr.	SWAG no.	Remarks / Anmerkungen
<b>SMART</b>					
City Coupe	BM 450	steel / Stahl, Alu	000 990 56 07	<b>12 92 7578</b>	M12 x 1,5 x 14/46 SW 15 / G 10.9 / Ku / corrolube
City Coupe	BM 451	steel rim / Stahlfelge	(000 990 37 07)		
Roadster	BM 452	steel / Stahl, Alu			
Forfour	BM 454	steel rim / Stahlfelge	454 402 00 72	<b>82 91 1938</b>	M12 x 1,25 H 16 / SW 21 / G 6 / Ke
Forfour	BM 454	steel / Stahl, Alu	454 402 00 72	<b>80 91 1939</b>	M12 x 1,5 x 17 SW 21 / G 8 / Ke

					yellow zinc-plated / gelbverzinkt
Forfour	BM 454	steel rim / Stahlfelge	454 330 01 59 S1 (454 330 01 20 S1) (454 330 02 20 S1)	<b>80 93 3499</b>	M12 x 1,5 x 29,5/40/46,6 G 10.9 / dacromet
<b>SUZUKI</b>					
Ignis	09/03 →	steel / Stahl, Alu	43423-86G00-000	<b>99 90 7066</b>	M12 x 1,5 x 22 / 47,5 SW 17 / G 10.9 / Ke zinc-plated / verzinkt
SX-4	06/06 →	steel / Stahl, Alu	(43423-86G00)		
Swift III	02/05 →	steel / Stahl, Alu			
Wagon R+	05/00 →	steel / Stahl, Alu			
Alto V	09/02 → 03/05	steel rim / Stahlfelge	09140-12042-000	<b>84 93 3926</b>	M12 x 1,25 H 17 / SW 19 / G 8 / Ke zinc-plated / verzinkt
Baleno	03/95 → 05/02	steel rim / Stahlfelge	(09140-12042)		
Carry 1.3 (GA413)	02/99 →	steel rim / Stahlfelge			
Ignis I	10/00 → 09/03	steel rim / Stahlfelge			
Grand Vitara	04/05 → ( only spare wheel / nur Reserverad)	steel rim / Stahlfelge			
Liana	10/01 →	steel rim / Stahlfelge			
Swift III (ex.) 1.6 (RS416)	02/05 →	steel rim / Stahlfelge			
SX4 2.0 (RW420)	06/06 →	steel rim / Stahlfelge			
Wagon R+	10/97 → 09/03	steel rim / Stahlfelge			



SWAG 80 91 1939



SWAG 84 93 3927

to fit / passend für			Ref. no. / Vergl.-Nr.	SWAG no.	Remarks / Anmerkungen
<b>SUZUKI</b>					
Baleno	03/95 → 05/02	alloy rim / Alufelge	09159-12057-000	<b>84 93 3927</b>	M12 x 1,25
Grand Vitara	03/98 → 04/05	alloy rim / Alufelge			H 30 / SW 19 / G 8 / Ke
Grand Vitara	05/05 →	alloy rim / Alufelge			zinc-plated / verzinkt
Grand Vitara XL-7	09/01 → 12/09	alloy rim / Alufelge			
Jimny	03/95 → 05/02	steel / Stahl, Alu			
Liana	03/95 → 05/02	alloy rim / Alufelge			
Swift III	02/05 →	alloy rim / Alufelge			
SX4 2.0 (RW420)	06/06 →	alloy rim / Alufelge			

Wagon R+	10/97 → 05/00 06/00 → 09/03	alloy rim / Alufelge steel / Stahl, Alu	09159-12057-000	<b>84 93 3927</b>	M12 x 1,25 H 30 / SW 19 / G 8 / Ke
<b>TOYOTA</b>					
Auris	10/06 →	steel rim / Stahlfelge	90942-01007	<b>80 91 1939</b>	M12 x 1,5 x 17
Avalon	04/00 →	steel rim / Stahlfelge			SW 21 / G 8 / Ke
Avensis	10/97 →	steel rim / Stahlfelge			yellow zinc-plated / gelbverzinkt
Avensis Verso	05/01 → 07/05	steel rim / Stahlfelge			
Avensis	11/08 →	steel rim / Stahlfelge			
Aurion	01/96 →	steel rim / Stahlfelge			
Blizzard	01/82 → 04/84	steel rim / Stahlfelge			
Camry	08/84 →	steel rim / Stahlfelge			
Carina	01/83 → 10/97	steel rim / Stahlfelge			
Celicia	08/85 → 08/91	steel rim / Stahlfelge			
Corolla	08/79 →	steel rim / Stahlfelge			
Corolla Verso	09/01 → 01/04	steel rim / Stahlfelge			
Corona	08/84 → 07/99	steel rim / Stahlfelge			
Cressida	08/77 → 08/96	steel rim / Stahlfelge			
Crown	10/74 → 07/83	steel rim / Stahlfelge			
Echo	08/99 →	steel rim / Stahlfelge			



SWAG 80 91 1939



SWAG 81 92 6587

to fit / passend für			Ref. no. / Vergl.-Nr.	SWAG no.	Remarks / Anmerkungen
<b>TOYOTA</b>					
Hiace	02/77 → 08/06	steel rim / Stahlfelge	90942-01007	<b>80 91 1939</b>	M12 x 1,5 x 17 SW 21 / G 8 / Ke yellow zinc-plated / gelbverzinkt
Hilux	08/83 → 11/93	steel rim / Stahlfelge			
iQ	11/08 →	steel rim / Stahlfelge			
Land Cruiser	08/80 → 04/86	steel rim / Stahlfelge			
Liteace	05/71 → 07/00	steel rim / Stahlfelge			
MR2	11/84 → 01/92	steel rim / Stahlfelge			
Paseo	04/91 → 07/99	steel rim / Stahlfelge			
Previa	01/85 → 12/99	steel rim / Stahlfelge			



Scion	04/03 →	steel rim / Stahlfelge	90942-01007	<b>80 91 1939</b>	M12 x 1,5 x 17
Soluna	12/96 →	steel rim / Stahlfelge			SW 21 / G 8 / Ke
Starlet	03/79 → 07/99	steel rim / Stahlfelge			yellow zinc-plated / gelbverzinkt
Spacia / Townace	11/96 → 11/01	steel rim / Stahlfelge			
Tarago / Model F	01/85 → 12/99	steel rim / Stahlfelge			
Tercel	08/86 → 07/99	steel rim / Stahlfelge			
Toyota 1000	04/69 → 08/88	steel rim / Stahlfelge			
Urban Cruiser	01/09 →	steel rim / Stahlfelge			
4 Runner	08/83 → 08/88	steel rim / Stahlfelge			
Yaris	01/99 →	steel rim / Stahlfelge			
Auris	10/06 →	alloy rim / Alufelge	90942-01033	<b>81 92 6587</b>	M12 x 1,5 x 37,5
Avalon	09/03 →	alloy rim / Alufelge			SW 21 / G 8 / Ke
Avensis	11/08 →	alloy rim / Alufelge			chromed / verchromt
Camry	10/82 →	alloy rim / Alufelge			
Celica	08/85 → 09/05	alloy rim / Alufelge			
Corolla	08/83 →	alloy rim / Alufelge			
Corona / Carina	10/83 → 11/87	alloy rim / Alufelge			
Crown	02/05 →	alloy rim / Alufelge			
Echo	08/99 →	alloy rim / Alufelge			



SWAG 81 92 6587



SWAG 81 93 3497

to fit / passend für			Ref. no. / Vergl.-Nr.	SWAG no.	Remarks / Anmerkungen
<b>TOYOTA</b>					
Highlander	03/05 →	alloy rim / Alufelge	90942-01033	<b>81 92 6587</b>	M12 x 1,5 x 37,5 SW 21 / G 8 / Ke chromed / verchromt
iQ	11/08 →	alloy rim / Alufelge			
MR2	08/85 → 09/05	alloy rim / Alufelge			
Paseo	08/95 → 07/99	alloy rim / Alufelge			
Prius	05/00 →	alloy rim / Alufelge			
Rav4	09/02 →	alloy rim / Alufelge			
Reiz	10/05 →	alloy rim / Alufelge			
Scion TC	05/04 →	alloy rim / Alufelge			

Sienna	01/03 → 11/05	alloy rim / Alufelge	90942-01033	<b>81 92 6587</b>	M12 x 1,5 x 37,5
Soluna	10/00 →	alloy rim / Alufelge			SW 21 / G 8 / Ke
Starlet	10/84 → 01/96	alloy rim / Alufelge			chromed / verchromt
Tarago / Previa	01/06 →	alloy rim / Alufelge			
Tercel	05/82 → 04/96	alloy rim / Alufelge			
Urban Cruiser	01/09 →	alloy rim / Alufelge			
Yaris	01/99 →	alloy rim / Alufelge			
Land Cruiser 70 (HZJ71, 74, 79/ HDJ79/FZJ71, 79/GRJ79)	08/99 →	alloy rim / Alufelge	90942-01103	<b>81 93 3497</b>	M14 x 1,5 H 46,5 / SW 22 / G 8 / Ke chromed / verchromt
Land Cruiser 100 (FZJ100,105/ HDJ100/UZJ100/HZJ105)	01/98 →	alloy rim / Alufelge			
Land Cruiser 200 (GRJ200/ VDJ200/URJ200/UZJ200)	09/07 →	alloy rim / Alufelge			
Platinum (USK6)	11/08 →	alloy rim / Alufelge			
Sequoia (UCK6/UPK6/USK6)	11/07 →	alloy rim / Alufelge			
Tundra (GSK5/UCK5/USK5/ UPK5)	11/06 →	alloy rim / Alufelge			



SWAG 81 92 6586



SWAG 81 92 6590



SWAG 81 93 2060



SWAG 99 90 7066

to fit / passend für			Ref. no. / Vergl.-Nr.	SWAG no.	Remarks / Anmerkungen
<b>TOYOTA</b>					
4Runner	08/02 →	alloy rim / Alufelge	90942-01058	<b>81 92 6586</b>	M12 x 1,5 x 47,5 SW 21 / G 8 / Ke chromed / verchromt long version / lange Version
Avalon	04/00 →	alloy rim / Alufelge			
Avensis	10/97 →	alloy rim / Alufelge			
Avensis Verso	05/01 → 07/05	alloy rim / Alufelge			
Camry	11/86 →	alloy rim / Alufelge 14"			
Carina 2	12/87 → 11/92	alloy rim / Alufelge 13"			
Celica	08/87 → 08/89	alloy rim / Alufelge			
Corolla	08/87 →	alloy rim / Alufelge 14"			

Corolla Verso	09/01 → 01/04	alloy rim / Alufelge	90942-01058	<b>81 92 6586</b>	M12 x 1,5 x 47,5
FJ Cruiser	01/06 →	alloy rim / Alufelge			SW 21 / G 8 / Ke
Highlander	11/00 →	alloy rim / Alufelge			chromed / verchromt
Kluger	08/03 →	alloy rim / Alufelge			long version / lange Version
Land Cruiser / Prado	09/02 →	alloy rim / Alufelge			
MR2	12/89 → 08/99	alloy rim / Alufelge			
Picnic	09/96 → 05/01	alloy rim / Alufelge			
Rav4	04/94 → 08/06	alloy rim / Alufelge			
Tacoma	01/95 →	alloy rim / Alufelge			
Tarago	02/00 →	alloy rim / Alufelge			
Previa	02/00 →	alloy rim / Alufelge			
Aygo	05 →	steel rim / Stahlfelge	90942-W2001	<b>81 93 2060</b>	M12 x 1,5 x 20/42 SW 17 / G 10.9 / Ke / geomet
Aygo	05 →	alloy rim / Alufelge	90942-W2002	<b>81 92 6590</b>	M12 x 1,5 x 21/59,5 SW 17 / G 10.9 / Ke / dacromet
<b>VAUXHALL</b>					
Agila Mk I / Mk II		steel / Stahl, Alu	90473457	<b>99 90 7066</b>	M12 x 1,5 x 22/47,5
Astra Mk I / Mk II		steel / Stahl, Alu	(90342774)		SW 17 / G 10.9 / Ke
Astra Mk III / Mk IV / Mk V		steel / Stahl, Alu			zinc-plated / verzinkt



SWAG 20 90 3375



SWAG 40 93 8008



SWAG 40 94 5788



SWAG 40 94 5789



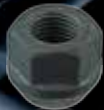
SWAG 84 93 3926



SWAG 99 90 7066

to fit / passend für		Ref. no. / Vergl.-Nr.	SWAG no.	Remarks / Anmerkungen
<b>VAUXHALL</b>				
Calibra		90473457	<b>99 90 7066</b>	M12 x 1,5 x 22/47,5 SW 17 / G 10.9 / Ke zinc-plated / verzinkt
Carlton Mk II		(90342774)		
Cavalier Mk II				
Cavalier Mk III				
Corsa Mk I / Mk II / Mk III				
Meriva Mk I / Mk II				
Nova				
Omega				

Senator Signum Tigra Mk I / Mk II Vectra Mk I / Mk II Zafira A/B		steel / Stahl, Alu steel / Stahl, Alu steel / Stahl, Alu steel / Stahl, Alu steel / Stahl, Alu	90473457 (90342774)	<b>99 90 7066</b>	M12 x 1,5 x 22/47,5 SW 17 / G 10.9 / Ke zinc-plated / verzinkt
Agila Mk I	00 → 08 (ch.) → 3G999999 00 → 08 all/alle	steel rim / Stahlfelge alloy rim / Alufelge	09207055	<b>84 93 3926</b>	M12 x 1,25 H 17 / SW 19 / G 8 / Ke zinc-plated / verzinkt
Ampera Astra Mk VI Cascada Zafira Mk III		steel / Stahl, Alu steel / Stahl, Alu steel / Stahl, Alu steel / Stahl, Alu	09598799	<b>40 93 8008</b>	M12 x 1,5 H 23 SW 19 / G 10 / Ke zinc-plated / verzinkt
Mokka Sintra	13 → (ch.) → EB999999 96 → 99	steel rim / Stahlfelge	09594681	<b>40 94 5788</b>	M12 x 1,5 H 23 SW 19 / G 8 / Ke / geomet
Antara	06 →	alloy rim / Alufelge	94837389	<b>20 90 3375</b>	M12 x 1,5 H 30 / SW 19 / G 10 / Ke zinc-plated / verzinkt
Ampera Mokka	11 → (ch.) DU000001 → 13 → (ch.) → EB999999	alloy rim / Alufelge	09594682 (09598708)	<b>40 94 5789</b>	M12 x 1,5 H 36 SW 19 / G 10 / Ke / geomet



SWAG 40 94 5063



SWAG 60 92 6747



SWAG 70 91 9341



SWAG 99 90 8476

to fit / passend für		Ref. no. / Vergl.-Nr.	SWAG no.	Remarks / Anmerkungen
<b>VAUXHALL</b>				
Combo D	11 → all/alle	steel / Stahl, Alu	95510864	<b>70 91 9341</b> M12 x 1,25 x 22/48,5 SW 17 / G 8.8 / Ke / geomet
Movano Mk I Vivaro	04 → 10	steel / Stahl, Alu 16" steel / Stahl, Alu	93858987 (91169857) (93853173)	<b>60 92 6747</b> M14 x 1,5 x 30 SW 19 / G 8.8 / Ke / dacromet
Insignia	08 →		09598177	<b>40 94 5063</b> M14 x 1,5 SW 22 / G 9 / Ke blue zinc-plated / blau verzinkt



## VOLKSWAGEN

Derby	75 → 81 (ch.) 86-B-150 000	steel rim / Stahlfelge	321 601 139	<b>99 90 8476</b>	M12 x 1,5 x 19/40 SW 17 / G 10.9 / Ku / geomet
Golf 1	74 → 84 all/alle	steel rim / Stahlfelge			
Golf 1 Cabrio	79 → 83 (mot.) EG, EJ, EM, FA, FH, FN, GG, JB	steel rim / Stahlfelge			
Golf 1 Cabrio	80 → 83 (ch.) 15-C-050 000	steel rim / Stahlfelge			
Jetta	78 → 84 all/alle	steel rim / Stahlfelge			
Passat 1 / 2 (32)	75 → 83 (ch.) 32A 0206 270	steel rim / Stahlfelge			
Passat 1 Variant (33)	73 → 80 (mot.) CK, FS, FY, WY, WZ, YH, YJ, YP, YS, ZA, ZB, ZC, ZF	steel rim / Stahlfelge			
Passat 1 (32)	73 → 80 (mot.) CK, FF, FS, FY, FZ, WY, WZ, YG, YH, YJ, YN, YP, YS, YT, YU, ZA, ZB, ZC, ZF	steel rim / Stahlfelge			
Passat 1 Variant (32)	75 → 80 all/alle	steel rim / Stahlfelge			
Passat 1 / 2 Variant (33)	75 → 84 (ch.) 32A 0206 270	steel rim / Stahlfelge			
Polo 1	75 → 78	steel rim / Stahlfelge			
Polo 1 / Classic	75 → 83 (ch.) 86-B-150 000	steel rim / Stahlfelge			
Santana	75 → 88 (ch.) 32A 0206 270	steel rim / Stahlfelge			



SWAG 30 94 5850



SWAG 32 90 1664



SWAG 99 90 6963



SWAG 99 90 8476

to fit / passend für			Ref. no. / Vergl.-Nr.	SWAG no.	Remarks / Anmerkungen
<b>VOLKSWAGEN</b>					
Scirocco 1 / 2	80 → 92 (ch.) 53-D-1000 000	steel rim / Stahlfelge	321 601 139	<b>99 90 8476</b>	M12 x 1,5 x 19/40
Scirocco 2	76 → 83 (mot.) EG, JJ	steel rim / Stahlfelge			SW 17 / G 10.9 / Ku / geomet
Caddy I (14)	83 → 92	steel / Stahl	3A0 601 139	<b>99 90 6963</b>	M12 x 1,5 x 24/45,5
Caddy II (9K9)	96 → 03	steel / Stahl, Alu	(321 601 139 C)		SW 17 / G 8.8 / Ku
Corrado (ex.) VR6*	89 → 95	steel / Stahl, Alu			yellow zinc-plated / gelbverzinkt
Golf I / Jetta I	81 → 84	steel / Stahl, Alu			
Golf II / Jetta II	84 → 92	steel / Stahl, Alu			
Golf III / Vento (ex.) VR6*	92 → 98	steel / Stahl, Alu			

Golf I / III Cabrio	85 → 02	steel / Stahl, Alu	3A0 601 139	<b>99 90 6963</b>	M12 x 1,5 x 24/45,5 SW 17 / G 8.8 / Ku yellow zinc-plated / gelbverzinkt
Lupo	99 → 06	steel / Stahl, Alu	(321 601 139 C)		
Passat II / III (ex.) VR6*	81 → 97	steel / Stahl, Alu			
Polo II / III, Derby II	82 → 02	steel / Stahl, Alu			
Scirocco II	81 → 92	steel / Stahl, Alu			
Santana	81 → 84	steel / Stahl, Alu			
* 4-hole rims with 100 mm hole circle only	* nur 4-Loch-Felge mit 100 mm Lochkreis				
e-up! (BL1)	13 →	steel / Stahl, Alu	WHT 004 899	<b>30 94 5850</b>	M12 x 1,5 / SW 17 / G 10.9 / Ku zinc-plated / verzinkt
up! (121)	11 →				
up! (6A1) (6A5)	13 →				
Käfer (Typ 1) (1200/1300/1302/1303)	67 → 86	steel front + rear / Stahl vorne + hinten	251 601 139 (211 601 139)	<b>32 90 1664</b>	M14 x 1,5 x 19/38 SW 19 / G 10.9 / Ku phosphated / phosphatiert
Typ 2 (Transporter)	68 → 79 → F 210 2300 000	steel front + rear / Stahl vorne + hinten			
Typ 2 (Transporter)	80 → 92	steel front only / Stahl nur vorne			
Typ 3 (Transporter)	66 → 68	steel front + rear / Stahl vorne + hinten			



SWAG 10 94 4869



SWAG 32 90 1664



SWAG 32 90 4912



SWAG 32 91 7818



SWAG 99 90 1214



SWAG 99 90 8237

to fit / passend für			Ref. no. / Vergl.-Nr.	SWAG no.	Remarks / Anmerkungen
<b>VOLKSWAGEN</b>					
Typ 4 (Transporter)	71 → 74 (ch.) 4112002291 →	steel front + rear / Stahl vorne + hinten	251 601 139 (211 601 139)	<b>32 90 1664</b>	M14 x 1,5 x 19/38 SW 19 / G 10.9 / Ku
LT 28/31 (281 → 286)	76 → 96	steel rear only / Stahl nur hinten	N 020 112 1 (N 020 112 2)	<b>99 90 1214</b>	M14 x 1,5 H 20 / SW 19 / G 8 / Ku phosphated / phosphatiert
Typ 2 (Transporter)	71 → 79 (ch.) F 210 2300 001 →	steel front + rear / Stahl vorne + hinten			
Typ 2 (Transporter)	80 → 92	steel rear only / Stahl nur hinten			
Typ 2 syncro	85 → 92	steel front + rear /			

		Stahl vorne + hinten			
Crafter 30/35 (2E / 2F)	06 → PR-C8Y		WHT 000 889	<b>10 94 4869</b>	M14 x 1,5 H 18 / SW 19 / G 10 / Fb geomet
50 (2E / 2F)	(ch.) 2E-C-000 001 → (ch.) 2F-C-000 001 → → (ch.) 2E-B-040 000 → (ch.) 2F-B-015 000 PR-CM1/C0Q (ch.) 2E-C-000 001 → (ch.) 2F-C-000 001 →				
Sharan	96 → 00	steel / Stahl, Alu	701 601 139 B	<b>32 90 4912</b>	M14 x 1,5 x 34/58 SW 19 / G 10.9 / Ku phosphated / phosphatiert
Transporter T4	91 → 04	steel / Stahl 15"	(7M0 601 139 A)		
Transporter T4	91 → 04	alloy / Alu (ch.) → 7D-1-000954	(701 601 139)		
Sharan	01 → 09	steel / Stahl, Alu	7M3 601 139 B	<b>32 91 7818</b>	M14 x 1,5 x 34/62 SW 19 / G 10.9 / Ku / dacromet
Transporter T4	99 → 04	steel / Stahl 16"			
Transporter T4	99 → 04	alloy / Alu (ch.) 7D-1-000955 →			
LT 28 / 35	97 → 07	steel / Stahl	2D0 601 139	<b>99 90 8237</b>	M14 x 1,5 x 34/62 SW 19 / G 10.9 / Ku zinc-plated / verzinkt



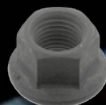
**SWAG 10 92 9466**



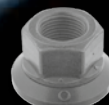
**SWAG 32 92 1588**



**SWAG 99 90 3176**



**SWAG 99 90 3556**



**SWAG 99 90 4899**



**SWAG 99 90 9801**

to fit / passend für		Ref. no. / Vergl.-Nr.	SWAG no.	Remarks / Anmerkungen
<b>VOLKSWAGEN</b>				
Amarok	10 →	steel / Stahl, Alu	WHT 002 529	<b>32 92 1588</b> M14 x 1,5 x 36/66 SW 19 / G 10.9 / Ku / dacromet
Touareg	03 →	steel / Stahl, Alu	(7L0 601 139)	
Transporter (T5)	03 → 08	steel / Stahl	(7L0 601 139 A)	
Transporter (T5)	03 → 08	alloy / Alu 16" + 17"		
Crafter 50	06 → (ch.) 2E-7-007000	steel front only / Stahl nur vorne	2D0 501 627	<b>99 90 3176</b> M14 x 1,5 x 50/57 G 10.9 phosphated / phosphatiert
Crafter 50	06 → (ch.) 2F-7-006500	steel front only / Stahl nur vorne		
LT 46	97 → 07	steel front only / Stahl nur vorne		
Crafter 30/35 (2E / 2F)	06 → → (ch.) 2E-B-040 000	steel / Stahl steel / Stahl	WHT 000 888	<b>10 92 9466</b> M14 x 1,5 x 58 SW 18 / G 10.9 / Ku / dacromet

30/35 (2E / 2F)	→ (ch.) 2F-B-015 000 PR-CM1/C0Q		WHT 000 888	<b>10 92 9466</b>	M14 x 1,5 x 58 SW 18 / G 10.9 / Ku / dacromet
50 (2E / 2F)	(ch.) 2E-C-000 001 → (ch.) 2F-C-000 001 → PR-C8Y (ch.) 2E-C-000 001 → (ch.) 2F-C-000 001 →	steel / Stahl			
LT 46	97 → 07	steel / Stahl	N 020 115 3	<b>99 90 3556</b>	M14 x 1,5 H 15 SW 19 / G 10 / Fb phosphated / phosphatiert
LT 35 → 55 (291 → 296)	76 → 96	steel front + rear / Stahl vorne + hinten	N 020 116 1	<b>99 90 4899</b>	M18 x 1,5 H 25 / SW 27 / G 10 phosphated / phosphatiert
LT 40 / 45 4x4	83 → 96	steel front + rear / Stahl vorne + hinten			
Bora	99 → 05	steel / Stahl, Alu	WHT 002 437	<b>99 90 9801</b>	M14 x 1,5 x 27/48 SW 17 / G 8.8 / Ku zinc-plated / verzinkt
Caddy	04 →	steel / Stahl, Alu	(431 601 139 A)		
Corrado VR6**	89 → 95	steel / Stahl, Alu	(443 601 139 A)		
Eos	06 →	steel / Stahl, Alu	(443 601 139 C)		
** 5-hole rims with 100 mm hole circle only					



SWAG 32 92 3368



SWAG 80 91 1939

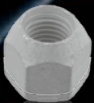


SWAG 99 90 9801

to fit / passend für		Ref. no. / Vergl.-Nr.	SWAG no.	Remarks / Anmerkungen
<b>VOLKSWAGEN</b>				
Fox (EU)	04 →	steel / Stahl, Alu	WHT 002 437	<b>99 90 9801</b> M14 x 1,5 x 27/48 SW 17 / G 8.8 / Ku zinc-plated / verzinkt
Golf III / Vento VR6**	92 → 98	steel / Stahl, Alu	(431 601 139 A)	
Golf IV	98 → 04	steel / Stahl, Alu	(443 601 139 A)	
Golf V / Plus	04 → 09	steel / Stahl, Alu	(443 601 139 C)	
Golf VI / Plus	09 → 13	steel / Stahl, Alu	(8D0 601 139 A)	
Golf Cabrio	11 →	steel / Stahl, Alu	(8D0 601 139 D)	
Jetta	06 →	steel / Stahl, Alu		
New Beetle / Cabrio	98 →	steel / Stahl, Alu		



Passat III VR6**	89 → 97	steel / Stahl, Alu	WHT 002 437	<b>99 90 9801</b>	M14 x 1,5 x 27/48 SW 17 / G 8.8 / Ku zinc-plated / verzinkt
Passat	98 →	steel / Stahl, Alu	(431 601 139 A)		
Passat CC	08 → 12	steel / Stahl, Alu	(443 601 139 A)		
Polo IV	05 → 09	steel / Stahl, Alu	(443 601 139 C)		
Polo V	09 →	steel / Stahl, Alu	(8D0 601 139 A)		
Scirocco	08 →	steel / Stahl, Alu	(8D0 601 139 D)		
Sharan	10 →	steel / Stahl, Alu			
Tiguan	08 →	steel / Stahl, Alu			
Touran	03 →	steel / Stahl, Alu			
** 5-hole rims with 100 mm hole circle only	** nur 5-loch Felge mit 100 mm Lochkreis!				
Phaeton	02 →	alloy / Alu	WHT 002 438 (4D0 601 137) (4D0 601 139 A)	<b>32 92 3368</b>	M14 x 1,5 x 35/51 SW 17 / G 8.8 / Ku black / schwarz
<b>VOLVO</b>					
V 40 I / S 40 I		steel / Stahl, Alu	30873148 (30870000)	<b>80 91 1939</b>	M12 x 1,5 x 17 SW 21 / G 8 / Ke yellow zinc-plated / gelbverzinkt



SWAG 50 92 7413



SWAG 50 92 9463



SWAG 55 92 1508

to fit / passend für		Ref. no. / Vergl.-Nr.	SWAG no.	Remarks / Anmerkungen
<b>VOLVO</b>				
S 60 I / II, S 80 I / II	03.00 →	steel rim / Stahlfelge	31423735	55 92 1508 M14 x 1,5 x 33 SW 19 / G 10.9 / Ke / magni zinc-plated / verzinkt
S 60 II		steel rim / Stahlfelge	(31362432)	
V 60		steel rim / Stahlfelge	(30639747)	
V 70 II / V 70 III		steel rim / Stahlfelge	(30660745 SK)	
V 70 XC II		steel rim / Stahlfelge	(30671468)	
S 80 / II		steel rim / Stahlfelge	(30683076)	
XC 60		steel rim / Stahlfelge	(30736685)	
XC 70 II / III	steel rim / Stahlfelge	(31200240)		

XC 90 X 90	(ch.) 66394 →	steel rim / Stahlfelge alloy rim / Alufelge	(31202337) (31317489) (8634658) (9485499)	<b>55 92 1508</b>	M14 x 1,5 x 33 SW 19 / G 10.9 / Ke / magni zinc-plated / verzinkt
C 30 C 70 II S 40 II / V 50 V 40 Cross Country		steel rim / Stahlfelge steel rim / Stahlfelge steel rim / Stahlfelge steel rim / Stahlfelge	999359 (8665333)	<b>50 92 7413</b>	M12 x 1,5 x 15 SW 19 / G 10 / Ke / magni
C 30 S 40 II S 70 II V 50		alloy rim / Alufelge alloy rim / Alufelge alloy rim / Alufelge alloy rim / Alufelge	31329645 (31200241) (31317466)	<b>50 92 9463</b>	M12 x 1,5 H 31 SW 19 / G 10 / Ke chromed / verchromt

## **SWAG Safety first!** Wheel bolts are safety components

Five wheel securing bolts on four wheels add up to serious challenges to safety, performance, and long life, twenty times over.

And even today, corrosion and the formation of grooves on contact surfaces can occur with low quality wheel bolts. So whenever there is a tyre change, it is a compelling opportunity to examine the state of the wheel bolts, and to replace them if necessary. Rust and deformation on wheel bolts are significant safety risks! Loss, theft, or purchase of rims are not the only occasions to use new wheel bolts. Wheel bolts should always be tightened to the prescribed torque using a torque wrench.

Original SWAG wheel bolts are characterised by the correct dimensions, outstanding fitting properties, and consistent torque retention periods.

## **SWAG Safety first!** Radschrauben sind Sicherheitsteile

Fünf Radbefestigungsschrauben an vier Rädern bedeuten 20-mal höchste Anforderungen an Sicherheit, Leistung und Langlebigkeit.

Auch heute noch kommt es bei Radschrauben minderer Qualität zu Korrosion und zur Nutbildung an Auflagestellen. Daher ist jeder Reifenwechsel zwingender Anlass, den Zustand der Radschrauben zu überprüfen und diese ggf. auszutauschen. Rost und Verformungen an Radschrauben sind eindeutige Sicherheitsrisiken! Nicht nur bei Verlust, Diebstahl oder Felgenkauf müssen neue Radschrauben verwendet werden. Radschrauben sollten stets mit einem Drehmomentschlüssel und dem für sie vorgegebenen Drehmoment angezogen werden.

Original SWAG Radschrauben kennzeichnen sich durch die richtige Bemaßung, hervorragende Montageeigenschaften und gleichbleibende Vorspann-

There is an enormous selection of wheel bolts for aluminium or steel rims, and for almost all vehicle types. Our range also includes wheel nuts and wheel bolts with anti-theft devices. One partner – one brand: For more than half a century, professionals in the automotive business worldwide have put their trust in SWAG replacement parts for vehicles. For more information and an online parts search, visit [www.swag-parts.com](http://www.swag-parts.com).

zeiten. Die Auswahl an Radschrauben für Aluminium- oder Stahlfelgen und für fast alle Fahrzeugtypen ist riesengroß. Ebenso zählen Radmuttern und Radschrauben mit Diebstahlschutz zu unserem Programm. Ein Partner, eine Marke: Seit einem halben Jahrhundert vertrauen Kfz-Profis weltweit auf die Autoersatzteile von SWAG. Mehr Infos und eine Online-Teilesuche unter [www.swag-parts.com](http://www.swag-parts.com).





## Notes

1. This catalogue replaces all previous versions.
2. The catalogue is subject to copyright. Reproductions, also in parts, are not allowed.
3. Our General Standard Terms and Conditions apply to supplies and services.
4. We reserve the right to make design modifications.
5. The comparison numbers in brackets are either replaced or can be used alternatively. We reserve the right to deliver the currently valid SWAG version.
6. All data has been prepared carefully. However, no guarantee with respect to the correctness can be given.
7. The illustrations contained in this catalogue may deviate from the parts supplied.
8. The spare parts shown in the catalogue are original SWAG spare parts.

## Hinweise

1. Dieser Katalog ersetzt alle früheren Ausgaben.
2. Der Katalog ist urheberrechtlich geschützt. Vervielfältigungen, auch auszugsweise, sind nicht gestattet.
3. Maßgebend für Lieferungen und Leistungen sind unsere allgemeinen Geschäftsbedingungen.
4. Konstruktionsänderungen müssen wir uns vorbehalten.
5. Die in Klammern angegebenen Vergleichsnummern sind entweder ersetzt oder wahlweise verwendbar. Wir behalten uns das Recht vor, die derzeit bei SWAG gültige Ausführung zu liefern.
6. Alle Daten wurden sorgfältig erarbeitet. Eine Gewähr für die Richtigkeit kann jedoch nicht übernommen werden.
7. Die Abbildungen in diesem Katalog können von den gelieferten Teilen abweichen.
8. Bei den im Katalog abgebildeten Ersatzteilen handelt es sich um Original SWAG Ersatzteile.