

# PIAA

AUTOMOTIVE 2016



THE ROAD  
TO BETTER  
VISIBILITY



**PIAA** was established in 1963 with the commitment to manufacture world-class **PRODUCTS** that our customers could use with **PRIDE** and **CONFIDENCE**.

Today, PIAA upholds that commitment by combining market driven concepts with the latest **TECHNOLOGY** to make night and inclement weather driving as **SAFE** as possible.

## TABLE OF CONTENTS

### Light Kits

- 6 RF Series LED Light Bars
- 14 RF3 LED Cube Lights
- 15 LP Series LED Lights
- 22 Halogen Performance Lights
- 26 Light Quick Reference Chart
- 27 Mounting & Accessories

### Bulbs

- 32 LED Performance Bulbs
- 33 Halogen Performance Bulbs

### Wiper Blades

- 37 Silicone Wiper Blades

### Applications & Promotional

- 45 Bulb Application Guide
- 56 Bulb Quick Reference Chart
- 57 Wiper Application Guide
- 71 Wiper Quick Reference Chart
- 73 Displays & Promotional



## TECHNOLOGY

PIAA has been the acknowledged leader in innovative automotive product for decades. Visionary design, inspired engineering and quality components are the hallmark of PIAA's reputation with drivers of distinction. Propelled by PIAA's Technical Design Center, our products cross the line from ordinary to extraordinary.

## RACE PROVEN QUALITY

Dependable and reliable under the most severe racing conditions. PIAA lenses and reflectors are computer designed for optimum performance and are made from the highest quality polycarbonate and hardened glass to withstand the rigors of off road racing and normal road hazards. PIAA quality makes PIAA lighting systems a serious choice for drivers today.

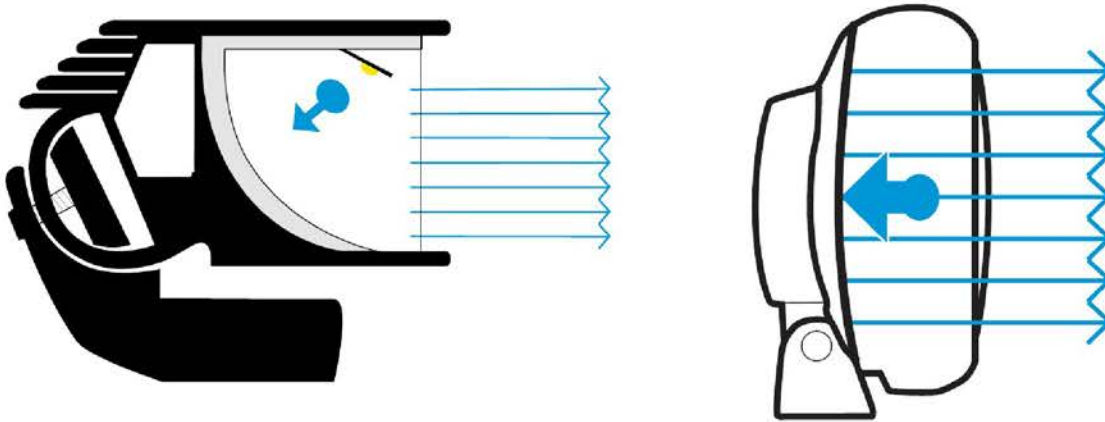
## EASE OF INSTALLATION

You don't have to be an automotive electrician to install PIAA light kits. First of all PIAA light kits come complete with a pre-assembled wiring harness which includes relay, fuse, and switch. Second, PIAA offers a wide range of mounting kits designed for easy installation of your PIAA lighting system. PIAA mounting kits come complete with everything you need to make your installation almost effortless. The use of PIAA mounting kits ensure a professional looking installation you can be proud of.

# OPTIC TECHNOLOGY

## REFLECTOR FACING TECHNOLOGY (RFT)

The innovative design offers significantly improved lighting and beam control compared to conventional LED and halogen lamps with forward-facing bulbs. The result is greater visibility for drivers and less demand on your vehicle's charging system.



RFT allows us to harness the entire light output produced from the LED chips, while directing the light into a usable beam pattern. Harnessing all the output has also allowed us to keep the low amp draw characteristics of LED lights by not having to utilize as many LEDs in the housing as our competitors. Thus allowing for lower amperage draw for equal or greater effective output.

- More controlled beam patterns directing the light exactly where you need it
- Lower power consumption than traditional forward facing LED light bars
- Two beam colors to combat dark and inclement weather conditions
- Compact and durable, with cast aluminum housings and polycarbonate lenses
- SAE Compliance for Street Legality

# BEAM COLORS

## WHITE

The pure white output of our lights and bulbs provide the perfect combination of contrast and brightness. The 6000k color temperature is designed to replicate daylight to provide optimum visibility.



## ION YELLOW

The Ion Yellow color was developed to combat the harsh weather driving conditions as well as poor visibility in dusty off-road conditions. The brilliant yellow color cuts through rain, fog, snow, and dust with ease.



# BEAM TYPES

## FOG PATTERN

Fog lights compliment your vehicle's low beams for improved visibility in rain, fog, snow, and dust. With a widespread pattern and defined cutoff line, fog lights can be used in conjunction with your low beams for improved all around vision.

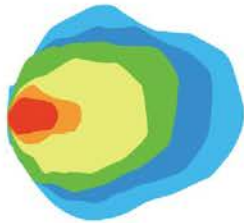
## HYBRID PATTERN

With more distance than a fog pattern and more width than a driving pattern, the Hybrid beam was engineered to offer the most versatile output for a variety of needs. The Hybrid can be used as a long range driving light with the benefits of illuminating the sides of the road and trails.

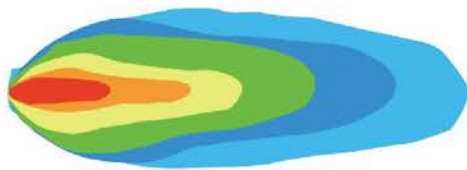
## LONG RANGE DRIVING

Driving lights are designed to compliment and outperform your vehicle's high beams. They are especially useful at higher speeds where they help to identify hazards and signs long before they would be seen with high beams only. All driving lights are extremely bright and must be dimmed in conjunction with the high beams.

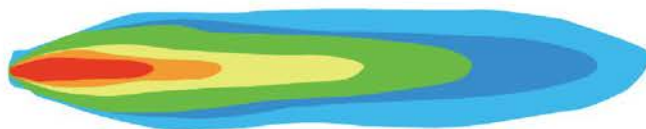
### FOG



### HYBRID



### DRIVING



# LED LIGHT BARS

RF SERIES COLLECTION



# RF SERIES FEATURES

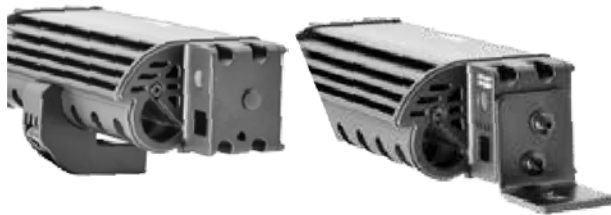
The RF Series LED light bars were designed with innovation and efficiency in mind. The industry first Reflector Facing Technology produces more efficient light and defined beam patterns than other light bars on the market, with fewer LEDs. By harnessing the entire output of each LED chip, RFT is able to produce more usable light than the competition.



COMPUTER DESIGNED REFLECTOR



REFLECTOR FACING LEDs



MULTIPLE MOUNTING OPTIONS



MODULAR DESIGNED HOUSING

## INDUSTRY FIRST MODULAR DESIGN



JUMPER HARNESS  
PART NO. 33039



# RF SERIES LED

FOG BEAM





# FOG BEAM

A Fog beam will enhance your visibility in rain, fog, snow, and dust. The RF Series fog lights come in two color options to combat any inclement weather environment.

- Wide beam to illuminate the side of trails and road shoulders
- Sharp cut line to eliminate glare to oncoming traffic
- Two beam color options for any weather condition
- Kit includes one lamp, pre-assembled harness, relay, & switch

**NEW**



**RF6 WHITE FOG**

Part No.	Watts	Bulb	Compliance
07206	11	LED	SAE/ECE



**RF6 ION FOG**

Part No.	Watts	Bulb	Compliance
22-07206	17	LED	SAE/ECE



**NEW**



**RF10 WHITE FOG**

Part No.	Watts	Bulb	Compliance
07210	16	LED	SAE/ECE



**RF10 ION FOG**

Part No.	Watts	Bulb	Compliance
22-07210	22	LED	SAE/ECE

**NEW**



**RF18 WHITE FOG**

Part No.	Watts	Bulb	Compliance
07218	26	LED	SAE/ECE

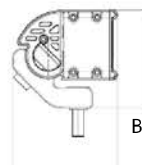


**RF18 ION FOG**

Part No.	Watts	Bulb	Compliance
22-07218	33	LED	SAE/ECE

## RF SERIES SIZING CHART

	A	B	C	D	E
RF6	3-9/16"	3-5/16"	2-1/4"	6-5/16"	8-5/16"
RF10	3-9/16"	3-5/16"	2-1/4"	10-1/16"	12-1/16"
RF18	3-9/16"	3-5/16"	2-1/4"	17-11/16"	19-11/16"

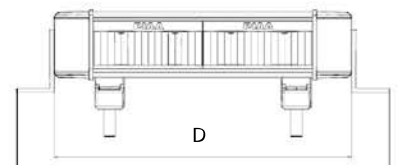


A



B

C



D

E

# RF SERIES LED

HYBRID BEAM



# HYBRID BEAM

The Hybrid beam was designed to provide the perfect combination of distance and width, making these the perfect all around light for a variety of needs.

- Extended beam reach for high speed driving
- Wide foreground lighting for on-road, low speed conditions
- Most versatile beam on the market today
- Kit includes one lamp, pre-assembled harness, relay, & switch



**NEW**



**RF6 WHITE HYBRID**

26-07106 17 LED

**NEW**



**RF10 WHITE HYBRID**

Part No.	Watts	Bulb	Compliance
26-07110	34	LED	SAE

**NEW**

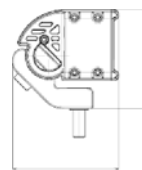


**RF18 WHITE HYBRID**

26-07118 71 LED SAE

## RF SERIES SIZING CHART

	A	B	C	D	E
RF6	3-9/16"	3-5/16"	2-1/4"	6-5/16"	8-5/16"
RF10	3-9/16"	3-5/16"	2-1/4"	10-1/16"	12-1/16"
RF18	3-9/16"	3-5/16"	2-1/4"	17-11/16"	19-11/16"



A



C



E

# RF SERIES LED

LONG RANGE DRIVING



# DRIVING BEAM

The long range driving beam is ideal when maximum beam reach is desired. The beam is design to reach much further than a vehicle's headlights, alerting drivers of oncoming hazards much earlier than would be seen with high beams only.

- Extreme beam reach for long distance visibility
- Precisely focused beam down the road to illuminate hazards
- See clearly and much sooner than standard headlights
- Kit includes one lamp, pre-assembled harness, relay, & switch



**RF6 WHITE DRIVING**

07606	17	LED	SAE/ECE
-------	----	-----	---------



**RF10 WHITE DRIVING**

Part No.	Watts	Bulb	Compliance
07610	33	LED	SAE/ECE

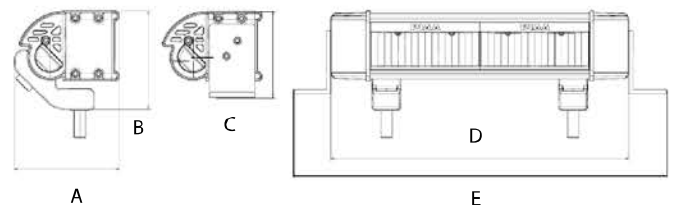


**RF18 WHITE DRIVING**

07618	71	LED	ECE
-------	----	-----	-----

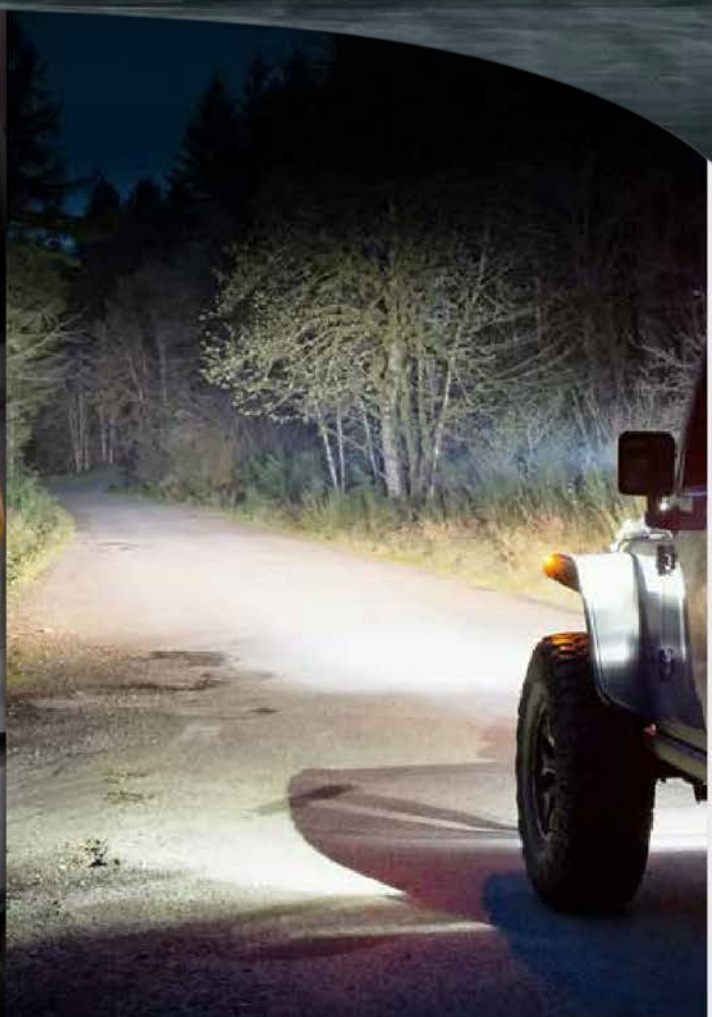
## RF SERIES SIZING CHART

	A	B	C	D	E
RF6	3-9/16"	3-5/16"	2-1/4"	6-5/16"	8-5/16"
RF10	3-9/16"	3-5/16"	2-1/4"	10-1/16"	12-1/16"
RF18	3-9/16"	3-5/16"	2-1/4"	17-11/16"	19-11/16"



# LED CUBES

RF3 SERIES



# RF3 CUBES

The RF3 3" LED Cube light has redefined the small LED light market. Unlimited mounting possibilities and a tremendous amount of light output makes the RF3s one of our most popular LED lights.

- More controlled beam patterns directing the light exactly where you need it
- Lower power consumption than traditional forward facing LED cube lights
- Bright 6000k White light that replicates daylight to illuminate the road and the trail
- Compact and durable, with cast aluminum housings and polycarbonate lenses
- SAE compliance in long range driving beam for on road use
- Driving lights cast the light far ahead of your vehicle's high beams
- Flood beam offers a broad range of light coverage



**RF3 WHITE DRIVING**

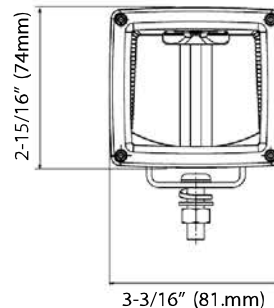
Part No.	Watts	Bulb	Compliance
07603	17	LED	SAE/ECE



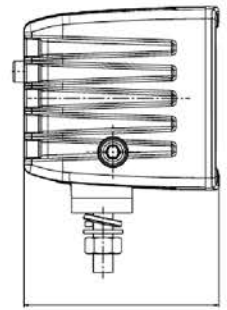
**RF3 WHITE FLOOD**

Part No.	Watts	Bulb	Compliance
07340	17	LED	-

## MULTIPLE MOUNTING OPTIONS



3-3/16" (81mm)



3-3/16" (81mm)

\* See pg. 27 for Vehicle Specific Mounting options

# LED LIGHTS

LP SERIES COLLECTION



COMPUTER DESIGNED REFLECTOR



REFLECTOR FACING LEDS



RUGGED ALUMINUM HOUSING



STREET LEGAL COMPLIANCE

**PIAA**







# REFLECTOR FACING LED TECHNOLOGY

The LP Series line of LED lights were design for people who wanted the newest LED technology in a traditional round housing. Made from aluminum and high strength polycarbonate, the LP lights are durable enough to handle any terrain.



# LED LIGHTS

LP SERIES COLLECTION



**NEW**

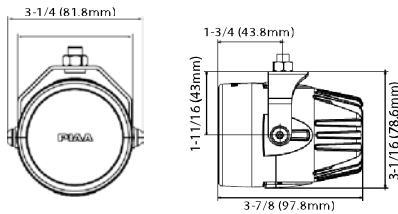


## LP270 LED

	Part No.	Watts	Bulb	Compliance
Ion DRV	22-02772	9	LED	-
White DRV	02772	9	LED	SAE
White FOG	02770	8	LED	SAE/ECE

**Description** Reflector Facing Technology and the overall size of the LP270 makes it one of the most powerful small LED lights on the market. Small in stature but big on output, the LP270 provides massive amounts of light, yet is small enough to offer a wide variety of fitments for cars, trucks, and SUV's.

**Kit Includes** Two lamps, pre-wired harness with fuse and switch.



**NEW**

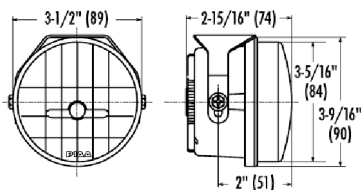


## LP530 LED

	Part No.	Watts	Bulb	Compliance
Ion DRV	22-05372	9	LED	-
White DRV	05372	9	LED	SAE
White FOG	05370	8	LED	SAE/ECE
White FLOOD	05340	8	LED	-

**Description** One of the most versatile lamps in the PIAA lineup. The small compact size of the LP530 allows it to be mounted virtually anywhere. It's versatility provides a wide range of applications from Jeep pillar mounts, to OEM fog replacements, to backup and scene lighting.

**Kit Includes** Two lamps, pre-wired harness with fuse and switch.



\* See pg. 28 for Vehicle Specific Mounting options

# LED LIGHTS

LP SERIES COLLECTION



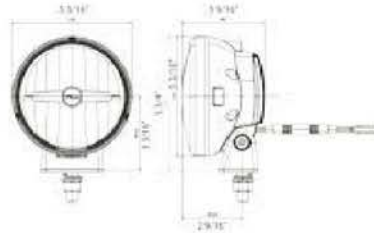


LP550 LED DRIVING

Part No.	Watts	Bulb	Compliance
05572	14	LED	SAE/ECE

**Description** The LP550 lights are perfect for bumper mount applications. At just over 5" in diameter the LP550's are perfect for today's mid-sized trucks and SUVs. A popular option for Jeep pillar mounts when a large amount of light is desired.

**Kit Includes** Two lamps, pre-wired harness with fuse and switch.

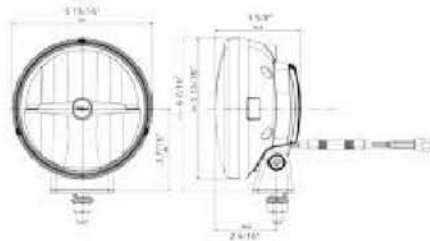


LP560 LED DRIVING

Part No.	Watts	Bulb	Compliance
05672	14	LED	SAE/ECE

**Description** The LP560 is the big brother to the LP550. The larger diameter is ideal for bumper mounting, light bars, and aftermarket bumpers. The larger reflective surface will provide more distance down the road and trail.

**Kit Includes** Two lamps, pre-wired harness with fuse and switch.

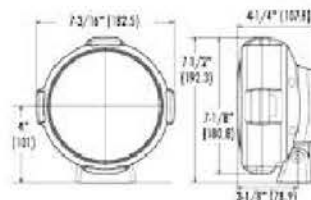


LP570 LED DRIVING

Part No.	Watts	Bulb	Compliance
05772	18	LED	SAE/ECE

**Description** When maximum light output is needed, look no further. This massive 7" lamp will provide unmatched down road vision. The slim design allows the LP570 to be perfectly integrated on the front of vehicles.

**Kit Includes** Two lamps, pre-wired harness with fuse and switch.



# HALOGEN

PERFORMANCE LIGHTING



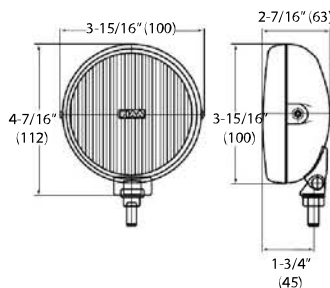


**Description** The 510s exceed SAE durability standards. The compact housing provides a multitude of applications. With its 4" diameter, the 510s are a natural for today's cars and trucks with round openings in the bumper.

**Kit Includes** Two lamps, pre-wired harness with fuse and switch.

## 510 SERIES

	Part No.	Watts	Bulb	Compliance
Ion Fog	05161	55=85	Ion	SAE
SMR FOG	05190	55=110	XWP	SAE
SMR DRV	05192	55=110	XWP	SAE
WhiteATP	05196	55=110	XWP	-

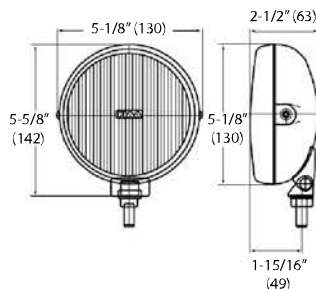


**Description** Big, bold design in a small package. Designed specifically for small, mid-sized trucks and SUVs. The unique black mesh lens cover offers additional protection while enhancing your vehicle's appearance.

**Kit Includes** Two lamps, pre-wired harness with fuse and switch.

## 540 SERIES

	Part No.	Watts	Bulb	Compliance
Ion Fog	05461	55=85	ION	SAE
White DRV	05462	55=110	XWP	SAE/ECE



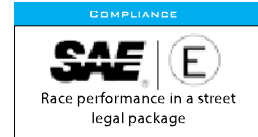
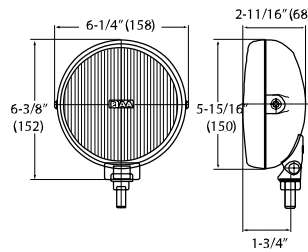


**Description** The number one selling halogen light on the market today. The 520 compliments more trucks and SUVs than any other light available. The reason? Simply the best combination of fashion and performance in its class.

**Kit Includes** Two lamps, pre-wired harness with fuse and switch.

### 520 SERIES

	Part No.	Watts	Bulb	Compliance
Ion FOG	05291	85	ION	-
Chrome DRV	05264	55=110	XWP	SAE/ECE
Ion DRV	05293	85	ION	-
SMR DRV	05294	55=110	XWP	SAE/ECE
White ATP	05296	85=135	XWP	-

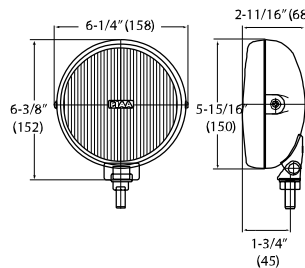


**Description** Durability, dependability and reliability add up to make the 40 series light the best value on the market. With its prism cut glass lens for optimum clarity, stamped steel housing, and powerful output, the 40 series has unmatched value to performance.

**Kit Includes** Two lamps, pre-wired harness with fuse and switch.

### 40 SERIES

	Part No.	Watts	Bulb	Compliance
Clear DRV	04062	55	Clear	ECE





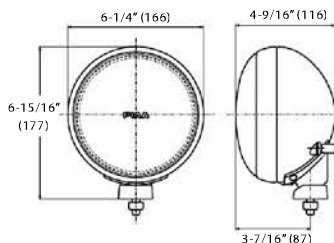


**525 SERIES**

	Part No.	Watts	Bulb
Combo	05250	60/55=110/100	XWP

**Description** The 525 comes standard with a series of features for today's trucks and SUVs. The 525's most unique feature is the incorporation of the LED bulb that creates a glowing effect when the main bulb is switched off.

**Kit Includes** Two lamps, pre-wired harness with fuse and switch.

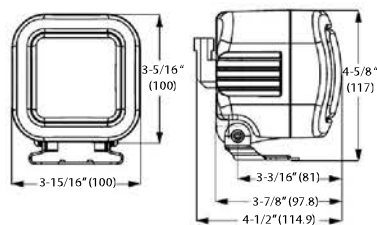


**410 SERIES**

	Part No.	Watts	Bulb	Compliance
White DRV	04152	60=120	XWP	SAE

**Description** The compact size of this powerhouse allows for a multitude of applications. This long range driving light gets an amazing amount of light down the road and ahead of your high beams.

**Kit Includes** Two lamps, pre-wired harness with fuse and switch.

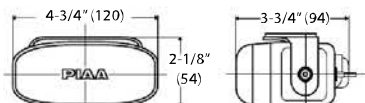


**2100 SERIES**

	Part No.	Watts	Bulb	Compliance
White DRV	02192	55=110	XWP	ECE
White FOG	02190	55=110	XWP	ECE

**Description** This uniquely designed, compact housing works in conjunction with the aerodynamic shape of today's vehicles. Multi-Surface Reflector produces a razor sharp beam.

**Kit Includes** Two lamps, pre-wired harness with fuse and switch.



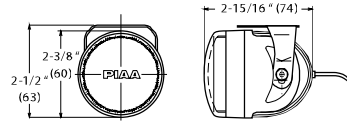


### 004 SERIES

	Part No.	Watts	Bulb
White DRV	00492	55=110	XWP

**Description** The PIAA 004XT Series Xtreme White Driving light has a compact design and high light output for versatility and maximum performance. The silver PPS housing ultra light weight, and compact for easy mounting.

**Kit Includes** Two lamps, pre-wired harness with fuse and switch.

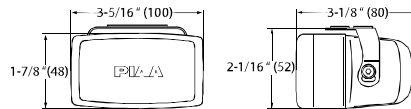


### 2000 SERIES

	Part No.	Watts	Bulb	Compliance
White FOG	02090	55=110	XWP	ECE
Ion FOG	02091	55=85	ION	ECE

**Description** The 2000 gives a wide flat beam pattern perfect for low beam assistance and is great for enhancing visibility in rain or snow. This light has achieved the tough European E-code certification. The 2000 series features a compact size and PIAA's proven Multi-Surface Reflector fog beam.

**Kit Includes** Two lamps, pre-wired harness with fuse and switch.

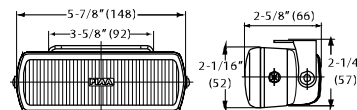


### 1500 BACKUP

	Part No.	Watts	Bulb
FLOOD	01540	55	Clear

**Description** The 1500 backup provides maximum illumination for both rear and peripheral visibility. They provide a wide flood pattern, and have an ultra compact design.

**Kit Includes** Two lamps, pre-wired harness with fuse and switch.



LED Lamp Kits	Kit	Single Lamp	Lens & Reflector	Bulb	Wiring Harness	Relay	Switch	Mesh Grill	White Cover
LP270 LED SAE Fog	02770	02700	-	-	34071	33086	30034	-	-
LP270 LED SAE Driving	02772	02702	-	-	34071	33086	30034	-	-
LP270 LED Ion Yellow Driving	22-02772	12-02702	-	-	34071	33086	30034	-	-
LP530 LED SAE Fog	05370	05300	-	-	34070	-	-	45302	-
LP530 LED SAE Driving	05372	05302	-	-	34070	-	-	45302	-
LP530 LED Yellow Driving	22-05372	12-05302	-	-	34070	-	-	45302	-
LP530 LED Flood	05340	05320	-	-	34046	33046	30022	45302	-
LP550 LED SAE Driving	05572	05502	-	-	34071	33086	30034	45502	-
LP560 LED SAE Driving	05672	05602	-	-	34071	33086	30034	45602	-
LP570 LED SAE Driving	05772	05702	-	-	34071	33086	30034	45702	45700
RF3 LED Flood	07340	07320	-	-	34071	33086	30034	-	-
RF3 LED SAE Driving	07603	07403	-	-	34071	33086	30034	-	-
RF6 LED Light Bar SAE Fog	07206	07006	-	-	34039	33086	30034	-	-
RF6 LED Light Bar SAE Yellow Fog	22-07206	12-07206	-	-	34039	33086	30034	-	-
RF6 LED Light Bar Hybrid	26-07106	16-07106	-	-	34039	33086	30034	-	-
RF6 LED Light Bar SAE Driving	07606	07406	-	-	34039	33086	30034	-	-
RF10 LED Light Bar SAE Fog	07210	07010	-	-	34039	33086	30034	-	-
RF10 LED Light Bar SAE Yellow Fog	22-07210	12-07210	-	-	34039	33086	30034	-	-
RF10 LED Light Bar SAE Hybrid	26-07110	16-07110	-	-	34039	33086	30034	-	-
RF10 LED Light Bar SAE Driving	07610	07410	-	-	34039	33086	30034	-	-
RF18 LED Light Bar SAE Fog	07218	07018	-	-	34039	33086	30034	-	-
RF18 LED Light Bar SAE Yellow Fog	22-07218	12-07218	-	-	34039	33086	30034	-	-
RF18 LED Light Bar SAE Hybrid	26-07118	16-07118	-	-	34039	33086	30034	-	-
RF18 LED Light Bar Driving	07618	07418	-	-	34039	33086	30034	-	-
Halogen Lamp Kits	Complete Kit	Single Lamp	Lens & Reflector	Replacement Bulb	Wiring Harness	Relay	Switch	Mesh Grill	White Cover
004 Series XWP Driving	00492	00412	30412	15213	34085	33086	30034	-	-
1500 Series Flood	01540	01520	31520	13055	34046	33046	30022	-	-
2000 Series Flood	02040	02020	32010	13055	34046	33046	30022	-	-
2000 Series XWP Fog	02090	02010	32010	15213	34085	33086	30034	-	-
2000 Series Ion Crystal Fog	02091	02011	32010	13555	34085	33086	30034	-	-
2100 Series XWP Fog	02190	02110	32110	15213	34085	33086	30034	-	-
2100 Series XWP Driving	02192	02112	32112	15213	34085	33086	30034	-	-
40 Series Driving	04062	04012	34012	13055	34085	33086	30034	45022	44010
410 Series XWP SAE Driving	04152	04102	34102	19015	34087	33086	30034	-	-
510 Series Ion Crystal SAE Fog	05161	05101	35101	13455	34085	33086	30034	45102	-
510 Series XWP SMR SAE Fog	05190	05110	35110	15213	34085	33086	30034	45102	-
510 Series XWP SMR SAE Driving	05192	05112	35112	15213	34085	33086	30034	45102	-
510 Series XWP ATP	05196	05106	35106	15213	34085	33086	30034	45102	-
520 Series Chrome XWP SAE Driving	05264	05204	35202	15213	34260	33260	30034	45020	44010
520 Series Ion Crystal Fog	05291	05211	35201	13085	34260	33260	30034	45022	44010
520 Series Ion Crystal Driving	05293	05213	35203	13085	34260	33260	30034	45022	44010
520 Series XWP SMR SAE Driving	05294	05214	35202	15213	34260	33260	30034	45022	44010
520 Series XWP ATP	05296	05216	35206	15286	34260	33260	30034	45022	44010
525 Series XWP	05250	05258	35258	15214	34400	33086	30035	45252	-
540 Series Ion Crystal SAE Fog	05461	05401	35401	13455	34085	33086	30034	45400	-
540 Series XWP SAE Driving	05462	05402	35402	15213	34085	33086	30034	45400	-

# MOUNTING

## VSK & MOUNTING OPTIONS



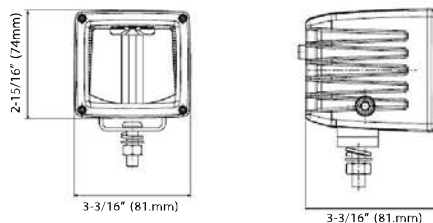
### RAM 2500/3500 10-16 BRACKETS

Bracket	Lights
30329	RF3 Cube

**Description** The Ram 2500/3500 mounting brackets are designed to be used in conjunction with the RF3 Cube LED lights to give the front of the vehicle a clean but rugged look while providing large amounts of light.

**Kit Includes** Two mounting brackets with all necessary hardware.

\* Lights Sold Separately



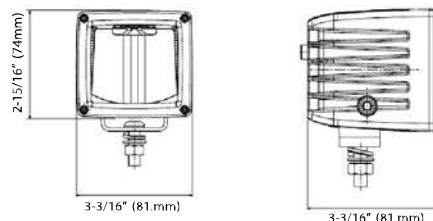
### FORD 250/350 99-16 BRACKETS

Bracket	Lights
30327	RF3 Cube

**Description** The Ford Super Duty 250/350 mounting brackets are designed to fit the powerful RF3 LED Cube lights in the stock fog light location. These brackets will help you mount lamps to significantly upgrade the look of the front end, while allowing you to add some serious candle power.

**Kit Includes** Two mounting brackets with all necessary hardware.

\* Lights Sold Separately





**JEEP WRANGLER 10-16 LED VSK**

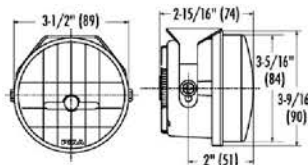
Kit	Watts	Compliance
LP530 DRV 05332	9	SAE
LP530 FOG 05330	8	SAE/ECE
BRACKETS 30330	-	-

\* Jeep VSK will fit all aftermarket bumper that utilize stock fog lights

Light Type LP530 LED

Description Our Jeep Wrangler JK vehicle specific kit replaces the OEM fog lights with our new LP530 LED driving lights. The LP530s provide far more output and consume less power than the factory fog lights.

Kit Includes Two lamps, mounting brackets, pre-wired harness with fuse and switch.



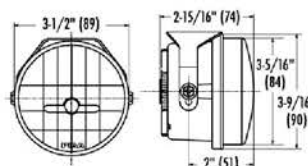
**TOYOTA TACOMA 12-16 LED VSK**

Kit	Watts	Compliance
LP530 DRV 05354	9	SAE
LP530 FOG 05350	8	SAE/ECE
BRACKETS 30334	-	-

Light Type LP530 LED

Description LP530 LEDs give the Tacoma powerful light output with unmatched durability. The 530 LEDs feature reflector-facing technology that allows us to maximize the output of the LED chips while keeping overall power consumption to a minimum.

Kit Includes Two lamps, mounting brackets, pre-wired harness with fuse and switch.



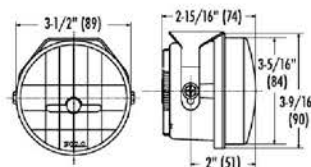
**TOYOTA TUNDRA 14-16 LED VSK**

Kit	Watts	Compliance
LP530 DRV 05362	9	SAE
LP530 FOG 05360	8	SAE/ECE
BRACKETS 30336	-	-

Light Type LP530 LED

Description The LP530 LEDs give the Toyota Tundra powerful light output with unmatched durability. The 530 LEDs feature reflector-facing technology that allows us to maximize the output of the LED chips while keeping overall tax on the trucks electrical system to a minimum.

Kit Includes Two lamps, mounting brackets, pre-wired harness with fuse and switch.





### JEEP WRANGLER PILLAR MOUNTS

Kit	Description
30110	07-16 Jeep Wrangler
30100	97-06 Jeep Wrangler



### HORIZONTAL BAR MOUNTS

Part#	Size
30717	1-1/2" Billet Aluminum
30718	1-3/4" Billet Aluminum
30719	2" Billet Aluminum



### VERTICAL BAR MOUNTS

Part#	Size
30727	1-1/2" Billet Aluminum
30728	1-3/4" Billet Aluminum
30729	2" Billet Aluminum



PIAA's line of mounting brackets are made from high strength aluminum with a durable anodized coating. Carried in popular sizes for vehicle push bars and ATV/UTV roll cage tubing, and roof racks. With a wide range of mounting, you are sure to find a bracket for any mounting application. The 360 brackets feature a 360° rotating platform for ultimate versatility.

### 360 BAR MOUNT BRACKETS

Part#	Size
30740	7/8"   1"   1-1/8"   1-1/4"
30744	1-1/2"   1-3/4"

# PERFORMANCE HORNS

PIAA horns are loud, attention getting horns which are one of the most important safety devices. Make sure people notice you with this 115 decibel and 500 Hertz lightweight and easy to install horn from PIAA.

- 3 different sounds to choose from
- Loud attention getting horns
- Double the sound of a stock horn



**SPORTS HORN BASS TONE**  
115DB

Part# \_\_\_\_\_ Pitch \_\_\_\_\_  
85110      400Hz & 500Hz



**SPORTS HORN HIGH TONE**  
115DB

Part# \_\_\_\_\_ Pitch \_\_\_\_\_  
85112      500Hz & 600Hz



**SLIM SPORT HORN**  
112DB

Part# \_\_\_\_\_ Pitch \_\_\_\_\_  
85114      400Hz & 500Hz



**SUPERIOR BASS HORN**  
112DB

Part# \_\_\_\_\_ Pitch \_\_\_\_\_  
85115      330Hz & 400Hz

# LED BULBS





# LED PERFORMANCE BULBS

- Designed to maximize the factory light housing on today's vehicles
- Precisely placed LEDs so light is directed down the road where you need it most
- A sharp horizontal cutoff to minimize glare for oncoming traffic
- Made with dual alloy aluminum and copper construction for reduced heat
- Waterproof drivers and connectors
- Plug and play installation, with no splicing
- Instant On - No warm-up time
- Lifespan of more than 30,000 hours

**NEW**  
**H4**



## LED PERFORMANCE BULBS

	Part#	Kelvin
White H4 (9003)	17204	6000k
White 9005 (HB3) /9006 (HB4)	17201	6000k
White H8/H9/H11/H16	17202	6000k
Yellow 9006 (HB4)	17501	2800k
Yellow H8/H11/H16	17502	2800k
168 Wedge Bulb	19107	6000k

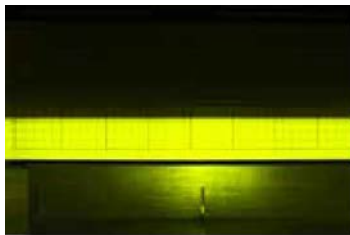
\* Does not comply with FMVSS108 or CMVSS108.

### NEW ADJUSTABLE DESIGN

- Set screw with rotating base
- Ensures proper bulb alignment



YELLOW 9006 2800K LED



WHITE 9006 6000K LED



STOCK 9006 HALOGEN





The Xtreme White Series of high output replacement bulbs give drivers better color recognition, depth perception, and improved contrast over stock halogen bulbs, all while meeting DOT specification. Xtreme White Plus bulbs feature a crisp white light output that allows for better road illumination, while a blue top coat adds style to your vehicle with the Xtreme White's 4000K color temperature.

- 4000k Bright White Color for Visibility and Style
- Heat Resistant Quartz Glass for Long Life
- XTRA Technology for Increased Light Output
- Aerospace Alloy Filaments for Durability
- Select DOT / SAE Compliance for Street Legality

OUTPUT



IN HEADLIGHT



**XTREME WHITE PLUS**

	Pair	Single	Wattage
H1	11655	11155	55w=110w
H3	15223	15213	55w=110w
H4 (9003)	15224	15214	60/55w=110/100w
H7	17655	17155	55w=110w
H8	18235	18035	35w=70w
H9	19665	19165	65w=120w
H10 (9145)	15210	15110	45w=60w
H11	15211	15111	55w=110w
H11B	15411	15401	55w=110w
H13	19618	19018	65/55w=85/75w
880	18880	18881	27w=50w
881	18803	18813	27w=50w
9004 (HB1)	19614	19014	65/45w=120/95w
9005 (HB3)	19615	19015	60w=120w
9006 (HB4)	19616	19016	51w=115w
9007 (HB5)	19617	19017	65/45w=120/95w
168/T10	19172	-	5w

The Night-Tech line of high output replacement bulbs from PIAA features several advancements in performance, durability, and manufacturing. Through the use of a unique mix of gasses including a higher proportion of inert gases as well as a new filament material, these bulbs offer up to 90% more light than a conventional bulb.

- 3600k White Color for Better Contrast at Night
- Heat Resistant Quartz Glass for Long Life
- Dual Band Coating for Increased Beam Distance
- Select DOT / SAE Compliance for Street Legality
- Proprietary Gas Mixture for Maximum Output

OUTPUT



IN HEADLIGHT



## NIGHT TECH

	Pair	Single	Wattage
H1	10701	11701	55w=110w
H3	10703	11703	55w=100w
H4 (9003)	10704	11704	60/55w=110/100w
H7	10707	11707	55w=110w
H11	10711	11711	55w=100w
H13	10728	11728	65/55w=85/75w
9005 (HB3)	10725	11725	60w=110w
9006 (HB4)	10726	11726	51w=95w
9007 (HB5)	10727	11727	65/55w=110/100w

# PLASMA ION



# PLASMA ION

Plasma Ion bulbs produce an amber/yellow light using patented ion crystal technology that is far less reflective than white bulbs. The yellow output reduces the amount of glare in extreme fog and improves visibility in inclement weather. It is designed with a high quality heat resistant quartz glass, alloy filaments, and patented Ion Crystal technology.

- 2500k Yellow Color for Poor Weather Visibility
- Heat Resistant Quartz Glass for Long Life
- Coating allows 95% light transmission
- Maintains Standard Power Draw



## PLASMA ION YELLOW

	Pair	Single	Wattage
H1	13501	13521	55w=100w
H3	13556	13555	55w=85w
H4 (9003)	13504	13514	60/55w=110/100w
H7	13507	13517	55w=110w
H11	13511	13531	55w=110w
H8	18535	18135	35w=70w
HB (9005/9006)	13506	13516	55w=110w
H16	13509	13519	19w=40w

\* Does not comply with FMVSS108 or CMVSS108.

# SILICONE

PERFORMANCE WIPER BLADES



# SILICONE ADVANTAGE



## SILICONE TECHNOLOGY

Silicone rubber blades provide a quiet and streak-free wiping action, while coating the windshield with a water repellent barrier. Silicone Technology reduces surface tension, causing water to repel from the windshield even when wipers are not in use.



PIAA Silicone rubber blades  
after 1 year of use



Standard rubber blades  
after 1 year of use

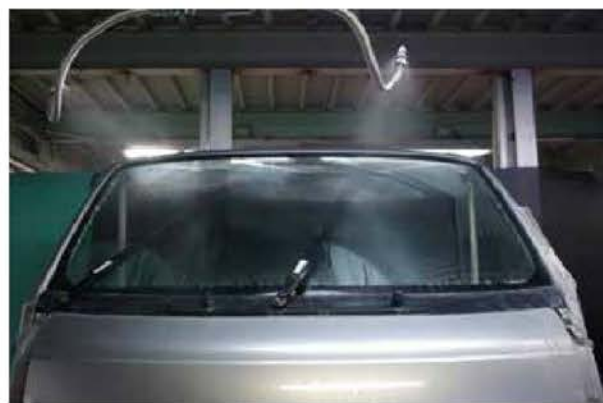
## WHY SILICONE?

Silicone rubber holds up to outdoor environments far better than standard rubber found in most wiper blades. PIAA blades maintain a clean edge and offer better resistance to all environments (Ozone & Temperature Extremes).



## REFILLABLE SILICONE BLADES

Aero Vogue and Super Silicone blades can accept silicone wiper refills. Therefore, cost of ownership is lower over time.



## RIGOROUS TESTING PROCEDURES

All of our wipers are subjected to extreme durability testing, including a 500,000 wipe test, accelerated Ozone resistance testing, and extreme temperature testing, to ensure we deliver the most durable and advanced wipers to the market.

# AERO VOGUE



## DESIGN

- » Aero Cover To Maximize Down Force
- » Pass-Through Technology Eliminates Wind Lift And Chatter
- » Resists Snow And Ice Build Up
- » Frame Designed For Even Pressure Across Windshield

2x

LONGER  
LASTING

## SILICONE ADVANTAGE



WATER REPELLENT  
SILICONE BARRIER



LONG LASTING  
PERFORMANCE



RE-FILLABLE  
SILICONE INSERT



WINDSHIELD PREP  
PACK INCLUDED



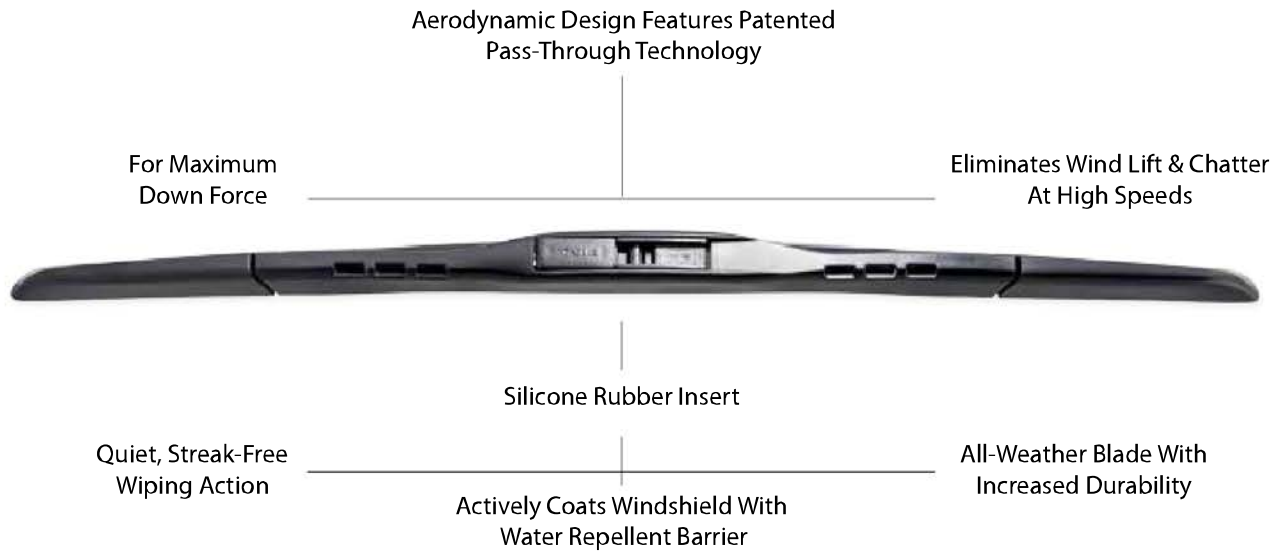
PIAA Aero Vogue high performance silicone wiper blades were designed with performance and functionality in mind. They feature PIAA's patented silicone technology which reduces surface tension, causing water to repel from the windshield for streak free and quiet operation. The new aero style cover features "Pass-Through" technology which greatly reduces blade chatter and wind lift at higher speeds.

## PRODUCT BENEFITS

**Durability** – High quality PC cover with an aerodynamic design for maximum performance in any weather condition.

**Silicone Rubber** – Maintain a sharp, clean edge and offers better resistance to all environments ( Ozone, Temperature Extremes).

**Design** – The aerodynamic design gives your vehicle a premium look while eliminating wind lift and blade chatter.



### AERO VOGUE WIPERS

Inches	Part#	MM
12	96130	300mm
14	96135	350mm
15	96138	380mm
16	96140	400mm
17	96143	430mm
18	96145	450mm
19	96148	475mm
20	96150	500mm
21	96153	525mm
22	96155	550mm
24	96160	600mm
26	96165	650mm
28	96170	700mm

### AERO VOGUE WIPER REFILLS

Inches	Part#	MM
12	94030	300mm
14	94035	350mm
15	94038	380mm
16	94040	400mm
17	94043	430mm
18	94045	450mm
19	94048	475mm
20	94050	500mm
21	94053	525mm
22	94055	550mm
24	94060	600mm
26	94065	650mm
28	94070	700mm

# SUPER SILICONE



## DESIGN

- » Low Profile Wiper Design
- » Powder Coated Frame
- » Maintains Sharp Clean Edge
- » Pin & Hook Style Applications

2x

LONGER  
LASTING

SILICONE  
ADVANTAGE



WATER REPELLENT  
SILICONE BARRIER



LONG LASTING  
PERFORMANCE



RE-FILLABLE  
SILICONE INSERT



WINDSHIELD PREP  
PACK INCLUDED

PIAA's Super Silicone Wiper Blades are designed to be the wiper of choice for many vehicles. This revolutionary silicone blade means cleaner windshields and greater visibility. Super Silicone Wipers have been the benchmark for wiper performance for nearly a decade. Our silicone infused blades deliver whisper-quiet movement, unrivaled vision, and long life.

With extended sizes available, there are applications for nearly every vehicle on the road. Both hook and pin applications – 3/16" and 1/4" pin styles – available.

## PRODUCT BENEFITS

**Durability** – Powder coated steel frame that prevents rust and corrosion.

**Silicone Rubber** – Maintain a sharp, clean edge and offers better resistance to all environments ( Ozone, Temperature Extremes).

**Installation** – Blades are pre-installed with C1 adapter and contains multiple adapters for a wide range of applications.

Properly Balanced To Provide Equal Pressure  
On The Windshield For Streak-Free Wiping  
Action



Silicone Rubber Insert For A Smooth And  
Quiet Operation

Heavy Duty Metal Frame Is Resistant To All  
Weather Conditions

### SUPER SILICONE WIPERS

Inches	Part#	MM
12	95030	300mm
13	95033	330mm
14	95035	350mm
15	95038	380mm
16	95040	400mm
17	95043	430mm
18	95045	450mm
19	95048	475mm
20	95050	500mm
21	95053	525mm
22	95055	550mm
24	95060	600mm
26	95065	650mm

### SUPER SILICONE WIPER REFILLS

Inches	Part#	MM
12	94030	300mm
13	94033	325mm
14	94035	350mm
15	94038	380mm
16	94040	400mm
17	94043	430mm
18	94045	450mm
19	94048	475mm
20	94050	500mm
21	94053	525mm
22	94055	550mm
24	94060	600mm
26	94065	650mm

# Si - TECH

## DESIGN

- » Low Profile Aerodynamic Design
- » Frame-less Design Eliminates Snow & Ice Build-up
- » More Pressure Points For Streak Free Wiping
- » Applications For 98% Of All Vehicles

2x

LONGER  
LASTING

SILICONE  
ADVANTAGE



WATER REPELLENT  
SILICONE BARRIER



LONG LASTING  
PERFORMANCE



QUIET & STREAK  
FREE OPERATION



WINDSHIELD PREP  
PACK INCLUDED

The PIAA Si-Tech flat wiper blade is a modern, frame-less design that delivers all season performance thanks to the patented silicone infused rubber insert.

The design creates more pressure points across the entire length of the blade for streak-free wiping. The flat blade design eliminates snow and ice build-up, and is heat and ozone resistant.

The silicone rubber continually reapplies an active silicone coating on the windshield that promotes water beading and quiet operation.

## PRODUCT BENEFITS

**One Piece Design** - Prevents ice and snow build-up through the elimination of exposed metal components.

**Eliminates Lift** – The low profile one piece design eliminates wind lift and blade chatter.

**Silicone Rubber** – Maintain a sharp, clean edge and offers better resistance to all environments ( Ozone, Temperature Extremes).



### SI-TECH SILICONE WIPERS

Inches	Part#	MM
16	97040	400mm
17	97043	430mm
18	97045	450mm
19	97048	475mm
20	97050	500mm
21	97053	525mm
22	97055	550mm
24	97060	600mm
26	97065	650mm

Year Range		Auto Make/Model	Low Beam	High Beam	Fog Beam
Start	End	<b>Acura</b>			
2013	2015	Ilx	H11	9005	H11
2007	2013	Mdx	-	9005	H11
2004	2006	Mdx	H11	9005	9006
2002	2005	Nsx	-	9005	9006
2013	2015	Rdx	H11	9005	H11
2007	2012	Rdx	-	9005	H11
2009	2012	Rl	-	9005	H8
2005	2008	Rl	-	9005	H11
2005	2006	Rsx	H1	9005	-
2009	2014	Tl	-	9005	H11
2007	2008	Tl	-	-	H8
2004	2006	Tl	-	-	9006
2009	2014	Tsx	-	9005	H11
2004	2008	Tsx	-	H1	H11
2010	2013	Zdx	-	9005	H11
Start	End	<b>Audi</b>			
2015	2015	A3	H7	-	H8
2009	2013	A3	H7	H7	H11
2006	2008	A3	H11	H7	i
2006	2008	A3 W/ Adaptive Hid	-	H7	i
2015	2015	A4	-	-	H8
2013	2014	A4	H7	H7	H8
2009	2012	A4	H7	H7	H11
2002	2008	A4	H7	H7	H11
2015	2015	A5	-	-	H8
2012	2014	A5	H7	H7	H8
2010	2012	A5	H7	-	H11
2008	2009	A5	H7	H7	H11
2015	2015	A6	-	-	H11
2009	2014	A6	H7	-	H11
2005	2008	A6	H7	H1	H7
2015	2015	A7	-	-	-
2012	2014	A7	-	-	-
2009	2010	A8	-	-	H11
2005	2008	A8	-	H7	H7
2015	2015	Allroad	-	-	H11
2013	2014	Allroad	H7	H7	H11
2003	2005	Allroad	H1	H9	H7
2015	2015	Q3	-	-	H11
2015	2015	Q5	-	-	H11
2009	2014	Q5	H7	H7	H11
2015	2015	Q7	-	-	H11
2010	2014	Q7	H7	-	H11
2007	2009	Q7	H7	H7	H7
2007	2008	Rs4	-	-	H11
2013	2015	Rs5	-	-	-

Year Range		Auto Make/Model	Low Beam	High Beam	Fog Beam
2015	2015	S3	-	-	-
2013	2015	S4	-	-	H8
2009	2012	S4	-	-	H11
2007	2008	S4	H7	H7	H11
2004	2006	S4	H7	H7	H11
2013	2015	S5	-	-	H8
2008	2012	S5	-	-	H11
2015	2015	S6	-	-	H11
2009	2011	S6	-	-	H7
2007	2008	S6	H7	H1	H7
2013	2014	S7	-	-	-
2009	2009	S8	-	-	H11
2007	2008	S8	-	H7	H7
2014	2015	Sq5	-	-	H11
2013	2015	Tt	-	-	H11
2008	2012	Tt	H7	H7	H11
2000	2006	Tt	H1	H7	H3
Start	End	<b>Bmw</b>			
2012	2013	1 Series	H7	H7	H8
2008	2011	1 Series	H7	H7	H11
2014	2015	2 Series Coupe	H7	*	i
2014	2015	3 Series	H7	H7	H8
2011	2013	3 Series Coupe	-	-	i
2007	2010	3 Series Coupe	-	-	H8
2000	2006	3 Series Coupe	H7	H7	9006
2009	2013	3 Series Sedan	H7	H7	H8
2007	2008	3 Series Sedan	H7	H7	H11
2002	2006	3 Series Sedan	H7	H7	H11
2014	2015	4 Series	-	-	H8
2014	2015	5 Series	-	-	-
2011	2013	5 Series	-	-	H8
2008	2010	5 Series	H7	H7	H8
2004	2007	5 Series	H7	H7	-
2012	2015	6 Series	-	-	-
2008	2010	6 Series	-	H7	H11
2004	2007	6 Series	-	H7	9006
2013	2015	7 Series	-	-	-
2009	2012	7 Series	-	-	H8
2006	2008	7 Series	-	H7	9006
2002	2005	7 Series	-	H7	H3
2014	2015	I3	H7	H11	-
2012	2013	M3	-	-	H11
2009	2011	M3 Coupe	-	-	H11
2009	2011	M3 Sedan	-	-	9006
2008	2008	M3	-	-	H11
2002	2006	M3	H7	H7	9006
2012	2013	M5	-	-	H11

Year Range			Low Beam	High Beam	Fog Beam
2008	2010	M5	-	-	9006
2006	2007	M5	H7	H7	9006
2012	2014	M6	-	-	-
2006	2010	M6	-	H7	-
2012	2015	X1	H7	H7	-
2015	2015	X3	H7	H7	-
2011	2014	X3	H7	H7	-
2007	2010	X3	H7	H7	H11
2004	2006	X3	H7	H7	H11
2014	2015	X5	-	-	-
2009	2013	X5	H7	H1	H11
2007	2008	X5	H7	H1	H11
2005	2006	X5	H7	H1	H11
2013	2014	X6	-	-	-
2008	2012	X6	-	-	H11
2003	2008	Z4	H7	H7	H11
Start	End	<b>Buick</b>			
2010	2010	Allure	H11	H9	H11
2005	2009	Allure	H11	H9	H11
2004	2005	Century	9006	9005	-
2008	2012	Enclave	-	-	H11
2013	2015	Encore	H11	9005	H11
2014	2015	Lacrosse W/ Hid	-	-	H8
2010	2013	Lacrosse	H11	H9	H11
2005	2009	Lacrosse	H11	H9	H11
1999	2005	Lesabre	9006	9005	-
2006	2011	Lucerne	9006	9005	H11
1992	2005	Park Avenue	9006	9005	-
2004	2007	Rainier	9006	9005	H11
2014	2015	Regal	-	-	H10
2011	2013	Regal	H11	H7	H10
2002	2007	Rendezvous	9006	9005	880
2005	2007	Terreza	H11	H11	-
2012	2015	Verano	H11	H9	H11
Start	End	<b>Cadillac</b>			
2015	2015	Cts Coupe	-	-	H11
2014	2014	Cts Coupe/Wagon	H11	H9	H11
2014	2014	Cts-V Sedan	-	-	H11
2008	2013	Cts	H11	H9	H11
2003	2007	Cts	-	-	H10
2000	2005	Deville	9006	9005	880
2007	2014	Escalade	-	-	H10
2003	2006	Escalade	-	9005	880
2010	2015	Srx	H11	9005	H10
2006	2009	Srx	-	H7	H10
2005	2011	Sts	H11	9005	H3
2006	2009	Sts-V	-	9005	H3

Year Range			Low Beam	High Beam	Fog Beam
2009	2009	Xlr	-	-	H11
Start	End	<b>Chevrolet</b>			
1995	2005	Astro Van	9006	9005	-
2010	2013	Avalanche	H11	9005	-
2007	2009	Avalanche	H11	9005	-
2002	2006	Avalanche	9006	-	-
2009	2011	Aveo	H4	*	H3
2004	2008	Aveo	H4	*	881
2009	2011	Aveo-5	H4	*	H3
2005	2008	Aveo-5	H4	*	881
1998	2005	Blazer	9006	9005	881
2014	2015	Camaro Z28	H13	*	-
2014	2015	Camaro W/O Hid	H11	H9	H11
2014	2015	Camaro Z11	-	-	H11
2012	2013	Camaro	H13	*	H11
2010	2011	Camaro	H13	*	-
2011	2015	Caprice	H11	H7	-
2000	2005	Cavalier	9007	*	880
2015	2015	City Express	H13	*	-
2005	2010	Cobalt	9007	*	H11
2015	2015	Colorado	H11	9005	-
2004	2012	Colorado	9006	9005	H10
2005	2013	Corvette	-	H9	H10
2011	2015	Cruze	H13	*	H8
2010	2015	Equinox	H11	9005	H11
2005	2009	Equinox	9007	*	H11
1996	2015	Express Conversion	9006	9005	-
2006	2011	Hhr	H13	*	H10
2014	2015	Impala Limited	H11	H9	H11
2006	2013	Impala	H11	H9	H11
2000	2005	Impala	9006	9005	-
2013	2015	Malibu Ls	H11	9005	-
2013	2015	Malibu Lt	H11	H7	H10
2013	2015	Malibu Ltz	H11	H7	H10
2007	2012	Malibu	H11	H9	H11
2004	2006	Malibu	H11	H9	880
2006	2007	Monte Carlo	H11	H9	H11
2000	2005	Monte Carlo	9006	9005	880
2007	2015	Silverado	H11	9005	-
2003	2007	Silverado	9006	9005	H10
2012	2015	Sonic	H11	9005	H8
2013	2015	Spark	H13	*	H11
2014	2015	Ss	-	H9	H10
2003	2006	Ssr	H11	-	880
2007	2015	Suburban	H11	9005	-
2000	2006	Suburban	9006	9005	880
2007	2015	Tahoe	H11	9005	-

X THE BULB LISTED IN THE LOW BEAM COLUMN IS A DUAL FILAMENT BULB THAT CONTAINS BOTH HIGH/LOW BEAMS.

I THIS VEHICLE HAS AN TWO OPTIONS, PLEASE CHECK OWNER'S MANUAL TO ENSURE CORRECT BULB TYPE

Year Range		Auto Make/Model	Low Beam	High Beam	Fog Beam
2000	2006	Tahoe	9006	9005	880
2002	2009	Trailblazer	9006	9005	880
2013	2015	Traverse	H11	H7	-
2010	2012	Traverse	H11	9005	-
2013	2015	Trax	H7	H1	H8
2005	2009	Uplander	H11	H11	-
1997	2005	Venture	9004	*	-
Start	End	<b>Chrysler</b>			
2013	2015	200	-	-	H11
2011	2014	300 W/ Hid	-	-	H11
2005	2010	300	9006	9005	H10
2005	2010	300C	-	9005	H10
2007	2009	Aspen	H13	*	H10
2004	2008	Crossfire	H7	H7	9006
2007	2008	Pacifica	H13	*	H10
2005	2006	Pacifica	H7	H7	H10
2006	2010	Pt Cruiser	-	-	H10
2001	2005	Pt Cruiser	-	-	9006
2007	2010	Sebring Sedan	9006	9005	H10
1999	2006	Sebring Sedan	9007	*	880
2007	2010	Sebring Convertible	9007	*	9006
1999	2006	Sebring Convertible	9007	*	9006
2010	2015	Town & Country	H11	H11	-
2008	2009	Town & Country	H11	H11	H10
2005	2008	Town & Country	9007	*	H10
Start	End	<b>Dodge</b>			
2013	2014	Avenger	9006	9005	H11
2010	2012	Avenger	9006	9005	-
2008	2009	Avenger	9006	9005	H10
2010	2012	Caliber	H13	*	-
2007	2009	Caliber	H13	*	H10
2005	2007	Caravan	9007	*	H10
1996	2005	Caravan	9007	*	-
2011	2014	Challenger	H13	*	-
2009	2010	Challenger	H13	9005	H10
2008	2008	Challenger	-	9005	H10
2011	2014	Charger	H11	9005	-
2006	2009	Charger	-	-	H10
2010	2010	Dakota	H13	*	-
2005	2009	Dakota	H13	*	H10
2013	2015	Dart	-	-	H11
2014	2015	Durango	-	-	H11
2011	2013	Durango	H11	9005	-
2007	2009	Durango	H13	*	H10
2004	2006	Durango	H13	*	9006
2011	2015	Grand Caravan	H11	H11	-
2010	2010	Grand Caravan	H13	*	-

Year Range		Auto Make/Model	Low Beam	High Beam	Fog Beam
2008	2009	Grand Caravan	H13	*	H10
2010	2015	Journey	9006	9005	-
2009	2009	Journey	9006	9005	H10
2005	2008	Magnum	9006	9005	H10
2001	2005	Neon	9007	*	H10
2007	2011	Nitro	H13	*	H10
2010	2010	Ram Pickup	H13	*	H10
2009	2010	Ram Pickup W/ 4 Lights	H11	9005	H10
2006	2009	Ram Pickup	H13	*	9006
2003	2005	Ram Pick-Up	9007	*	9006
2007	2009	Sprinter	H7	H7	H11
2005	2006	Sprinter	H7	H1	H1
2001	2006	Stratus	9007	*	880
2003	2010	Viper	-	-	H10
Start	End	<b>Fiat</b>			
2012	2015	500	-	-	H11
2014	2015	500L	-	-	H11
Start	End	<b>Ford</b>			
2013	2015	C-Max	H11	H1	H11
1998	2011	Crown Victoria	9007	*	-
2008	2015	Econoline	H13	*	-
1992	2007	Econoline	9007	*	-
2015	2015	Edge	H11	9005	-
2007	2010	Edge	H11	9005	H11
2013	2015	Escape S	H11	9005	-
2013	2015	Escape Se, Sel	H11	9005	H10
2013	2015	Escape - Titanium	-	H1	H10
2008	2012	Escape	H13	*	-
2007	2007	Escape	H11	H7	-
2005	2006	Escape	H11	H7	H10
2005	2005	Excursion	H13	*	H10
2015	2015	Expedition W/ Proj.	9005	H9	-
2015	2015	Expedition W/O Proj.	H11	9005	-
2013	2014	Expedition	H13	*	-
2007	2012	Expedition	H13	*	H10
2003	2006	Expedition	9006	9005	H10
2011	2015	Explorer	9005	*	H11
2006	2010	Explorer	H13	*	H10
2002	2005	Explorer	9006	9005	H10
2007	2010	Explorer Sport Trac	H13	*	H10
2001	2005	Explorer Sport Trac	9007	*	H10
2015	2015	F-150	H11	9005	-
2013	2014	F-150	H13	*	-
2006	2012	F-150	H13	*	-
2004	2005	F-150	H13	*	H10
2005	2015	F-Series Super Duty	H13	*	H10
2014	2015	Fiesta	H11	H1	-



Year Range		Auto Make/Model	Low Beam	High Beam	Fog Beam
2011	2013	Fiesta	H11b	9005	H11
2005	2007	Five Hundred	9006	9005	H10
2009	2015	Flex	H13	*	H11
2015	2015	Focus	H11	H1	H8
2012	2014	Focus	H11	H1	H11
2008	2011	Focus	H13	*	H11
2005	2007	Focus	9007	*	H11
2004	2007	Freestar	H13	*	-
2005	2007	Freestyle	H13	*	H11
2006	2015	Fusion	H11	H7	H11
2013	2015	Mustang	-	-	H11
2010	2012	Mustang	H13	*	H11
2005	2009	Mustang	H13	*	H11
2005	2006	Mustang Gt	-	-	H1
2013	2015	Police Interceptor	9005	*	-
2001	2011	Ranger	9007	*	H10
2010	2014	Raptor	H13	*	-
2010	2012	Taurus	9005	*	-
2008	2009	Taurus - Incl. X	H11	9005	H11
1992	2007	Taurus	9007	*	880
2002	2005	Thunderbird	9007	*	-
2015	2015	Transit	H11	9005	-
2014	2015	Transit Connect	H11	H9	H11
2010	2013	Transit Connect	H13	*	H11
Start	End	Freightliner			
2007	2015	Sprinter	H7	H7	H11
2005	2006	Sprinter	H7	H1	H1
Start	End	Gmc			
2013	2015	Acadia	-	-	H11
2007	2012	Acadia	H11	H7	-
2015	2015	Canyon	H11	9005	-
2009	2012	Canyon	9006	9005	-
2004	2008	Canyon	9006	9005	H11
1999	2009	Envoy	9006	9005	880
1995	2005	Jimmy	9006	9005	-
1995	2005	Safari	9006	9005	-
1996	2015	Savana	9006	9005	-
2007	2013	Sierra	H11	-	-
2003	2006	Sierra	9006	9005	H10
1999	2007	Sierra Classic	9006	9005	H10
2007	2010	Sierra Denali	H11	9005	-
2002	2006	Sierra Denali	9005	9005	880
2010	2015	Terrain	H11	9005	H11
2015	2015	Yukon	H11	9005	-
2007	2014	Yukon	H13	*	-
2000	2006	Yukon	9006	9005	880
2007	2008	Yukon Denali	H13	*	-

Year Range		Auto Make/Model	Low Beam	High Beam	Fog Beam
2001	2006	Yukon Denali	9005	9005	880
2008	2013	Yukon Hybrid	H13	*	H10
Start	End	Honda			
2013	2015	Accord	H11	9005	H8
2006	2012	Accord	9006	9005	H11
1999	2005	Accord	9006	9005	-
2013	2015	Accord Coupe	H11	9005	H8
2008	2012	Accord Coupe	H11	9005	H11
2006	2007	Accord Coupe	9006	9005	H11
2010	2011	Accord Crosstour	H11	9005	H11
2016		Civic	H11	9005	H8
2006	2015	Civic	9006	9005	H11
2004	2005	Civic	9006	9005	-
2014	2015	Civic Coupe	H11	9005	H11
2009	2013	Civic Coupe	9006	9005	H11
2004	2008	Civic Coupe	9006	9005	-
2012	2015	Civic Hybrid	9006	9005	-
2009	2011	Civic Hybrid	9006	9005	H11
2006	2008	Civic Hybrid	9006	9005	-
2015	2015	Cr-V	H11	9005	H8
2012	2014	Cr-V	H4	*	H11
2007	2011	Cr-V	H4	*	-
2005	2006	Cr-V	H1	H1	-
2013	2014	Cr-Z	H11	9005	H8
2011	2012	Cr-Z	H11	9005	H11
2012	2015	Crosstour	H11	9005	H11
2003	2011	Element	H4	*	-
2007	2008	Element Sc	H11	9005	-
2015	2015	Fit	H4	*	H8
2007	2014	Fit	H4	*	-
2007	2014	Fit Sport	H4	*	H11
2010	2014	Insight	H11	9005	-
2000	2006	Insight	H4	*	-
2011	2015	Odyssey	H11	9005	H11
2008	2010	Odyssey	9006	9005	H11
2005	2007	Odyssey	9006	9005	H8
2016		Pilot	*	9005	H8
2006	2015	Pilot	H11	9005	H11
2003	2005	Pilot	H4	*	-
2006	2014	Ridgeline	H4	*	H11
2000	2009	S2000	-	H1	-
Start	End	Hummer			
2003	2009	H2	9007	*	-
2006	2010	H3	H13	*	-
Start	End	Hyundai			
2014	2015	Accent W/ Projector	9005	*	881
2000	2015	Accent	H4	*	881

X THE BULB LISTED IN THE LOW BEAM COLUMN IS A DUAL FILAMENT BULB THAT CONTAINS BOTH HIGH/LOW BEAMS.

I THIS VEHICLE HAS AN TWO OPTIONS, PLEASE CHECK OWNER'S MANUAL TO ENSURE CORRECT BULB TYPE

Year Range		Auto Make/Model	Low Beam	High Beam	Fog Beam
2011	2015	Azera	H7	H7	H8
2008	2010	Azera	H11b	H7	H8
2006	2007	Azera	H7	H7	H8
2014	2015	Elantra	H11	H7	881
2014	2015	Elantra W/ Projector	9005	H7	881
2014	2015	Elantra Coupe	H11	H7	881
2014	2015	Elantra Coupe W/ Projector	9005	H7	881
2013	2013	Elantra Coupe	H11	H1	881
2013	2015	Elantra Gt	H11	H7	881
2007	2012	Elantra Sedan	H11b	H1	881
2009	2012	Elantra Wagon	H11b	H7	881
2004	2006	Elantra	H7	H1	9006
2008	2009	Entourage	H11b	H7	9006
2007	2007	Entourage	H7	H7	9006
2014	2015	Equus	-	H7	-
2011	2013	Equus	-	H7	H8
2015	2015	Genesis	H11	9005	-
2009	2014	Genesis	H11	H7	H8
2013	2015	Genesis Coupe	H7	H7	H8
2010	2012	Genesis Coupe	H11b	H1	881
2013	2015	Santa Fe	H11	H7	H8
2009	2012	Santa Fe	H11b	H7	881
2007	2008	Santa Fe	H7	H7	881
2002	2006	Santa Fe	H4	*	H3
2015	2015	Sonata	9005	9005	-
2011	2014	Sonata	H7	H7	H8
2009	2010	Sonata	H11b	H1	881
2006	2008	Sonata	H7	H1	881
2002	2005	Sonata	H7	H1	9006
2011	2015	Sonata Hybrid	H11	H7	H8
2015	2015	Sonata Sport	9005	9005	-
2007	2008	Tiburon	H11	H7	9006
2003	2006	Tiburon	H7	H7	9006
2014	2015	Tucson	-	-	880
2010	2013	Tucson	H4	*	880
2005	2009	Tucson	H4	*	881
2012	2015	Veloster	H7	H7	881
2012	2012	Veloster W/ Projector	H11b	H7	881
2013	2015	Veloster Turbo	H11b	H7	H8
2010	2012	Veracruz	H11b	H7	9006
2007	2009	Veracruz	H11	H7	9006
2002	2005	Xg350	H7	H1	-
Start	End	<b>Infiniti</b>			
2008	2012	Ex35	H11	H9	H8
2013	2013	Ex37	H11	H9	H8
2006	2012	Fx35	-	-	H8

Year Range		Auto Make/Model	Low Beam	High Beam	Fog Beam
2003	2005	Fx35	-	-	9006
2013	2013	Fx37	-	-	H8
2006	2008	Fx45	-	-	H8
2003	2005	Fx45	-	-	9006
2009	2013	Fx50	-	-	H8
2011	2012	G25	-	-	H8
2007	2008	G35	-	-	9006
2006	2006	G35	-	-	H4
2003	2005	G35	H1	H4	H4
2006	2007	G35 Coupe	-	-	H1
2014	2014	G37	-	-	H8
2011	2013	G37	-	-	H8
2009	2013	G37	-	-	9006
2008	2008	G37	-	-	H1
2011	2013	G37 Coupe	-	-	H11
2009	2010	G37 Coupe	-	-	H1
2013	2013	Jx35	-	-	H11
2009	2010	M35	-	9005	H11
2006	2008	M35	H1	9005	H11
2012	2013	M35h	-	-	H8
2011	2013	M37	-	-	H8
2009	2010	M45	-	9005	H11
2006	2008	M45	H1	9005	H11
2011	2013	M56	-	-	H8
2015	2015	Q40	-	-	H8
2005	2006	Q45	-	9005	H8
2014	2015	Q60	-	-	H11
2014	2014	Q70	-	-	H8
2014	2015	Qx50	H11	H9	H8
2011	2013	Qx56	-	-	H8
2004	2010	Qx56	-	9005	H3
2014	2015	Qx60	-	-	H11
2014	2015	Qx70	-	-	H8
2014	2014	Qx80	-	-	H8
Start	End	<b>Isuzu</b>			
2003	2008	Ascender	9006	9005	880
2006	2006	I-280	9006	9005	-
2007	2008	I-290	9006	9005	-
2006	2006	I-350	9006	9005	-
2007	2008	I-370	9006	9005	-
Start	End	<b>Jaguar</b>			
2004	2008	S-Type	H7	9005	H11
2009	2009	Super V8	-	H7	H11
2007	2008	Super V8	H7	H7	H3
2005	2006	Super V8	H7	H7	9006
2009	2009	Vanden Plas	-	H7	H11
2007	2008	Vanden Plas	H7	H7	H3

Year Range		Auto Make/Model	Low Beam	High Beam	Fog Beam
2004	2006	Vanden Plas	H7	H7	9006
2004	2008	X-Type	H1	H1	H11
2009	2011	Xf	H11	H7	-
2004	2009	Xj8	H7	H7	H3
2004	2009	Xjr	H7	H7	H3
2007	2015	Xk	-	-	-
2003	2006	Xk8	H1	9005	H1
2007	2014	Xkr	-	-	-
2003	2006	Xkr	H1	9005	H1
Start	End	<b>Jeep</b>			
2006	2010	Commander	9006	9005	H10
2014	2015	Compass Sport & Latitude	H11	9005	H11
2011	2013	Compass	H11	9005	-
2010	2010	Compass	H13	*	-
2007	2009	Compass	H13	*	H10
2014	2015	Compass Limited	-	-	H11
2014	2015	Grand Cherokee	H11	9005	H11
2011	2013	Grand Cherokee	H11	9005	-
2008	2010	Grand Cherokee	9006	9005	H10
2005	2007	Grand Cherokee	9006	9005	H10
2012	2013	Grand Cherokee Srt8	-	9005	H11
2008	2012	Liberty	H13	*	H10
2002	2007	Liberty	9007	*	H10
2010	2015	Patriot	H13	*	-
2007	2009	Patriot	H13	*	H10
2015	2015	Renegade	H13	*	H11
1999	2006	Tj	-	-	H3
2010	2015	Wrangler	H13	*	-
2007	2009	Wrangler	H13	*	H10
1999	2006	Wrangler	-	-	H3
Start	End	<b>Kia</b>			
2007	2009	Amanti	H11	H7	-
2004	2006	Amanti	H7	H7	H3
2009	2011	Borrego	H11b	H1	881
2014	2015	Cadenza	H7	H9	H8
2014	2015	Cadenza Limited	-	H9	-
2014	2015	Forte	H11	H1	H8
2010	2013	Forte	H11b	H1	881
2015	2015	K900 W/ Hid	-	9005	-
2014	2015	Optima Ex, Lx, Sx	H11b	H1	H8
2014	2015	Optima Hybrid	H11b	H1	-
2014	2015	Optima Limited	-	H7	-
2014	2015	Optima Sx Turbo	-	H7	H8
2011	2013	Optima	H11b	H1	H8
2009	2010	Optima	H11b	H1	881
2007	2008	Optima	H11b	H1	9006

Year Range		Auto Make/Model	Low Beam	High Beam	Fog Beam
2006	2007	Optima	H7	H1	9006
2005	2005	Optima	H7	H7	H1
2000	2011	Rio	H4	*	881
2012	2015	Rio Hatchback W/	H11b	H1	9006
2012	2015	Rio Hatchback W/O	H7	H1	9006
2012	2015	Rio Sedan	H4	*	H8
2006	2006	Rio 5	H4	*	-
2014	2015	Rondo	H11b	H7	H8
2007	2012	Rondo	H11b	H1	881
2014	2014	Sedona	H11b	H1	H8
2007	2012	Sedona	H11b	H1	H8
2006	2007	Sedona	H7	H1	H8
2002	2005	Sedona	H7	H7	881
2015	2015	Sedona L, Lx	H7	H7	-
2015	2015	Sedona Ex, Sx	H7	H7	H8
2015	2015	Sedona Limited	H7	H7	9006
2011	2013	Sorento	H11	H1	881
2007	2009	Sorento	H11b	H1	881
2003	2006	Sorento	H7	H1	881
2014	2015	Sorento Ex, Lx, Sx	H7	H7	881
2015	2015	Sorento Limited	-	H7	881
2014	2015	Soul Wo/ Projector H/L	H7	H7	H8
2014	2015	Soul W/ Projector H/L	H13	*	H8
2014	2015	Soul W/ Hid H/L	-	H7	H8
2012	2013	Soul	H11b	H7	881
2010	2011	Soul	H4	*	881
2015	2015	Soul Ev	H7	H7	9006
2005	2009	Spectra	H4	*	881
2005	2009	Spectra 5	H4	*	881
2014	2015	Sportage	H11b	H7	881
2011	2013	Sportage	H11b	H7	881
2005	2010	Sportage	H4	*	881
Start	End	<b>Lamborghini</b>			
Start	End	<b>Land Rover</b>			
2004	2005	Freelander	H7	H7	H3
2011	2015	Lr2	H11	H7	H11
2008	2010	Lr2	H11	H7	H11
2008	2009	Lr3	H7	H7	H11
2005	2007	Lr3	H7	H7	H11
2010	2015	Lr4	H7	H7	H11
2010	2012	Range Rover	-	-	H11
2006	2008	Range Rover	-	H7	H11
2002	2005	Range Rover	H7	H7	H7
2012	2015	Range Rover Evoque	9005	*	-
2010	2015	Range Rover Sport	-	-	H11
2006	2009	Range Rover Sport	H7	H7	H11
Start	End	<b>Lexus</b>			

X THE BULB LISTED IN THE LOW BEAM COLUMN IS A DUAL FILAMENT BULB THAT CONTAINS BOTH HIGH/LOW BEAMS.

I THIS VEHICLE HAS AN TWO OPTIONS, PLEASE CHECK OWNER'S MANUAL TO ENSURE CORRECT BULB TYPE

Year Range			Auto Make/Model	Low Beam	High Beam	Fog Beam
2014	2015		Ct200h	H11	H9	H16
2011	2013		Ct200h	H11	H9	H11
2013	2015		Es300h	H11	9005	H16
2004	2006		Es330	H11	9005	9006
2013	2015		Es350	H11	9005	H16
2011	2012		Es350	H11	9005	9006
2007	2010		Es350	H7	9005	9006
2005	2006		Gs300	-	9005	9006
2014	2015		Gs350	-	-	H16
2013	2013		Gs350	-	-	H11
2007	2011		Gs350	-	9005	9006
2005	2007		Gs430	-	9005	9006
2014	2015		Gs450H	-	-	H16
2013	2014		Gs450h	-	-	H11
2007	2011		Gs450h	-	9005	9006
2008	2011		Gs450h	-	9005	9006
2008	2011		Gs460	-	9005	9006
2014	2015		Gx460	-	H9	-
2010	2013		Gx460	H11	9005	H11
2003	2009		Gx470	H11	9005	H3
2010	2012		Hs250h	H11	9005	H11
2014	2014		Is F	-	9005	-
2008	2013		Is F	-	9005	H11
2014	2014		Is250 / Is350	-	-	H16
2011	2013		Is250 / Is350	H11	9005	H11
2006	2010		Is250 / Is350	H11	9005	9006
2010	2015		Is250c / Is350c	H11	9005	H11
2003	2005		Is300	-	9005	H3
2007	2012		Ls460	-	9005	9006
2008	2012		Ls600h	-	9005	9006
1999	2007		Lx470	H1	9005	H3
2013	2015		Lx570	-	9005	H11
2008	2011		Lx570	H11	9005	H11
2015	2015		Nx200t	-	9005	-
2015	2015		Nx300h	-	9005	-
2004	2006		Rx330	H11	9005	9006
2014	2015		Rx350	H11	9005	H16
2010	2013		Rx350	H11	9005	H11
2007	2009		Rx350	H11	9005	9006
2006	2008		Rx400h	H11	9005	H11
2014	2015		Rx450h	H11	9005	H16
2014	2015		Rx450h W/ Hid	-	9005	-
2014	2014		Rx450h W/ Led H/L	-	H9	H16
2010	2013		Rx450h	H11	9005	H11
2002	2010		Sc430	-	9005	H3
Start	End		<b>Lincoln</b>			
2003	2005		Aviator	H11	9005	-

Year Range			Auto Make/Model	Low Beam	High Beam	Fog Beam
2005	2006		Ls	H11	9005	i
2005	2006		Ls W/Hid H/L	-	H11	i
2006	2008		Mark Lt	H13	*	-
2009	2015		Mks	-	-	H11
2010	2015		Mkt	-	-	H11
2011	2015		Mkx	-	-	H11
2007	2010		Mkx	H11	9005	H11
2010	2012		Mkz	H11	H7	H11
2007	2009		Mkz	H11	H7	H11
2007	2014		Navigator	-	-	H11
2003	2006		Navigator	9006	9005	H10
2004	2011		Town Car	H7	9005	H10
2003	2010		Town Car	H7	9005	H10
Start	End		<b>Lotus</b>			
2004	2006		Elise	H1	H7	-
Start	End		<b>Maybach</b>			
2003	2012		57, 62	-	H7	H3
Start	End		<b>Mazda</b>			
2011	2014		2	H4	*	H11
2014	2015		3 Hatchback	H11	9005	H11
2010	2013		3 Hatchback	H11	9005	H11
2014	2015		3 Sedan	H11	9005	H11
2010	2013		3 Sedan	H11	9005	H11
2007	2009		3 Sedan	H7	9005	i
2004	2006		3 Sedan	H7	9005	H11
2012	2015		5	H11	9005	H11
2006	2010		5	H7	9005	H11
2014	2015		6	H11	9005	H11
2011	2013		6	H7	9005	H11
2009	2010		6	H7	H9	H11
2006	2008		6	H1	H1	H11
2003	2005		6	H1	H1	H3
2006	2010		B Series Pick-Up	9007	*	9006
2013	2015		Cx-5	H11	9005	H11
2007	2012		Cx-7	H7	9005	H11
2013	2015		Cx-9	H11	9005	H11
2007	2012		Cx-9	H11	9005	9006
2004	2006		Mpv	H4	*	H11
2006	2015		Mx-5 Miata	H7	H9	H11
2004	2005		Miata	9006	9005	9006
2009	2011		Rx-8	H7	H9	9006
2004	2008		Rx-8	H7	H9	H11
2008	2011		Tribute	H13	*	H10
2001	2006		Tribute	H4	*	H1
Start	End		<b>Mercedes-Benz</b>			
2013	2014		B-Class	H7	H7	-
2011	2015		C-Class	H7	H7	H7

Year Range		Auto Make/Model	Low Beam	High Beam	Fog Beam
2008	2010	C-Class	H7	H7	H7o-
2003	2007	C-Class	H7	H7	9006
2011	2014	Cl-Class	-	H11	-
2010	2010	Cl-Class	-	H7	i
2007	2009	Cl-Class	-	H7	i
2001	2006	Cl-Class	-	H7	9006
2014	2015	Cla-Class	H7	-	-
2006	2009	Clk-Class	H7	H7	i
2004	2005	Clk-Class	H7	H7	9006
2006	2011	Cls-Class	H7	H7	i
2008	2012	E-Class	H7	H7	H11
2003	2007	E-Class	H7	H7	
2007	2007	E280	H7	H7	-
2008	2009	E300	H7	H7	-
2011	2015	G-Class	-	-	H11
2008	2010	G-Class	H4	*	H11
2002	2007	G-Class	H4	*	H3
2013	2015	Gl-Class	H7	H7	-
2012	2012	Gl-Class	H7	H7	-
2008	2011	Gl-Class	H7	H7	H11
2007	2007	Gl-Class	H7	H7	H11
2015	2015	Gla-Class	H7	-	H11
2013	2015	Glk-Class	H7	-	-
2010	2012	Glk-Class	H7	H7	H11
2012	2015	M-Class	H7	H7	-
2008	2011	M-Class	H7	H7	i
2006	2007	M-Class	H7	H7	H7
2002	2005	M-Class	H7	H7	H8
2011	2013	R-Class	H7	H7	-
2006	2010	R-Class	H7	H7	i
2011	2013	S-Class	-	H9	-
2007	2010	S-Class	-	H7	H11
2003	2006	S-Class	H7	H7	H7
2008	2011	S450	H7	H9	-
2013	2015	Sl-Class	-	-	H7
2009	2012	Sl-Class	-	H7	H11
2007	2008	Sl-Class	-	H7	H11
2003	2006	Sl-Class	H7	H7	9006
2012	2015	Slk-Class	H7	H7	-
2004	2011	Slk-Class	H7	H7	i
2005	2009	Slr McLaren	-	9005	H3
2010	2015	Sprinter	H7	H7	H11
Start	End	Mercury			
2006	2011	Grand Marquis	H13	*	H10
1998	2005	Grand Marquis	9007	*	-
2005	2011	Mariner	H13	*	H10
2010	2011	Milan	9005	*	H11

Year Range		Auto Make/Model	Low Beam	High Beam	Fog Beam
2006	2009	Milan	H11	H7	H11
2005	2007	Montego	-	9005	H10
2004	2007	Monterey	H13	*	H1
2007	2010	Mountaineer	H13	*	H10
2002	2006	Mountaineer	9007	*	H10
2008	2009	Sable	H11	9005	H11
1992	2005	Sable	9007	*	-
Start	End	Mini			
2009	2015	Cooper	H13	*	H8
2006	2006	Cooper	H7	H7	H11
2006	2006	Cooper W/ Hid	-	H9	H11
2005	2005	Cooper	H7	H7	H11
2008	2014	Cooper Clubman (Incl.	H13	*	H8
2007	2008	Cooper Convertible	H7	H7	H11
2011	2015	Cooper Countryman	H13	*	H8
2007	2008	Cooper Hatchback	H13	*	H8
2013	2015	Cooper Paceman	H13	*	H8
2009	2014	Cooper S	H13	*	H8
2006	2006	Cooper S	H7	H7	H11
2006	2006	Cooper S W/ Hid	-	H9	H11
2005	2005	Cooper S	H7	H7	H11
2009	2014	Jcw Clubman	H13	*	H8
2009	2014	John Cooper Works	H13	*	H8
Start	End	Mitsubishi			
2009	2012	Eclipse	H13	*	H11
2006	2008	Eclipse	H13	*	H10
2003	2005	Eclipse	H4	*	H1
2006	2011	Endeavor	9007	*	H11
2004	2005	Endeavor	9007	*	H1
2010	2012	Galant	9007	*	H10
2007	2009	Galant	9007	*	H10
2007	2009	Galant W/ Projector	9006	9005	H10
2004	2006	Galant	9007	*	H1
2004	2006	Galant W/ Projector	9006	9005	H1
2012	2014	I-Miev	H11	9005	H8
2008	2015	Lancer	9006	9005	H11
2004	2007	Lancer	9007	*	H3
2005	2006	Lancer Evolution	9006	9005	-
2005	2006	Lancer Oz Rally	9007	*	H3
2005	2006	Lancer Ralliart	9007	*	H3
2014	2015	Mirage	H4	*	H11
2001	2006	Montero	H4	*	9006
2014	2015	Outlander	H7	9005	H11
2010	2013	Outlander	9006	9005	H11
2007	2009	Outlander	9006	9005	H11
2005	2006	Outlander	H1	9005	9006
2011	2015	Outlander Sport	H11	9005	H11

X THE BULB LISTED IN THE LOW BEAM COLUMN IS A DUAL FILAMENT BULB THAT CONTAINS BOTH HIGH/LOW BEAMS.

I THIS VEHICLE HAS AN TWO OPTIONS, PLEASE CHECK OWNER'S MANUAL TO ENSURE CORRECT BULB TYPE

Year Range		Auto Make/Model	Low Beam	High Beam	Fog Beam
2006	2009	Raider	H13	*	H10
2015	2015	Rvr	H11	9005	H11
Start	End	<b>Nissan</b>			
2003	2005	350Z	H7	H1	-
2003	2005	350Z W/ Hid	-	H7	-
2007	2015	Altima	H11	H9	H11
2005	2006	Altima	H1	9005	H11
2011	2015	Armada	9006	9005	H11
2004	2010	Armada	9006	9005	-
2009	2014	Cube	H4	*	H8
2005	2015	Frontier	9007	*	H11
2009	2014	Gt-R	-	H9	-
2015	2015	Juke	H11	9005	H11
2011	2014	Juke	9007	*	H8
2013	2015	Leaf	H13	*	H11
2011	2015	Leaf W/ Led Headlights	-	H9	H11
2009	2014	Maxima	H11	9005	H11
2008	2008	Maxima	9005	9005	H11
2007	2007	Maxima	-	-	H11
2004	2006	Maxima	-	-	H3
2015	2015	Micra	H4	*	H11
2015	2015	Murano	H11	H9	H11
2011	2014	Murano	H11	9005	H8
2009	2010	Murano	H11	9005	H8
2012	2015	Nv1500-3500	H13	*	-
2013	2015	Nv200	H13	*	-
2013	2015	Pathfinder	H11	9005	H11
2005	2012	Pathfinder	9007	*	H11
2011	2015	Quest	H11	9005	H8
2004	2009	Quest	9006	9005	H11
2014	2015	Rogue	H11	H9	H11
2011	2013	Rogue	H11	9005	H8
2008	2010	Rogue	H11	9005	H11
2014	2015	Rogue Select	H11	9005	H8
2013	2015	Sentra	H11	H9	H11
2004	2012	Sentra	H13	*	H11
2011	2015	Titan	9006	9005	880
2004	2010	Titan	9006	9005	-
2012	2015	Versa	H4	*	H11
2007	2011	Versa	H4	*	H8
2014	2015	Versa Note	9007	*	H11
2005	2015	Xterra	9007	*	H11
Start	End	<b>Pontiac</b>			
2001	2005	Aztek	9006	9005	880
1999	2005	Bonneville	9006	9005	-
2007	2010	G5	9007	*	H11
2008	2010	G6	H11	H9	-

Year Range		Auto Make/Model	Low Beam	High Beam	Fog Beam
2005	2007	G6	H11	H9	H11
2008	2009	G8	H11	H9	-
2004	2008	Grand Prix	9006	9005	H11
2004	2006	Gto	H11	H9	-
2005	2009	Montana	H11	H11	-
2006	2009	Solstice	H13	*	-
2003	2005	Sunfire	H11	H9	880
2006	2009	Torrent	H13	*	H11
2009	2010	Vibe	9006	9005	-
2003	2008	Vibe	H4	*	9006
Start	End	<b>Porsche</b>			
2013	2015	911	-	H7	-
2009	2012	911	-	H11	-
2009	2012	911 W/ Adaptive H/L	-	H7	-
2005	2008	911	H7	H9	H8
2005	2008	911 W/ Hid	-	H11	H8
2013	2015	Boxster	H7	H9	-
2009	2012	Boxster	H7	H9	H8
2009	2012	Boxster W/ Hid	-	H7	H8
2005	2008	Boxster	H7	H9	H8
2005	2008	Boxster W/ Hid	-	H11	H8
2015	2015	Cayenne	-	H7	H11
2003	2014	Cayenne	H7	H7	H11
2014	2015	Cayman	H7	H9	-
2014	2015	Cayman W/ Hid	-	H7	-
2009	2012	Cayman	H7	H9	H11
2009	2012	Cayman W/ Hid	-	-	H11
2006	2008	Cayman	H7	H9	H11
2006	2008	Cayman W/ Hid	-	H11	H11
2015	2015	Macan	H7	H7	H11
2010	2014	Panamera	-	H7	-
Start	End	<b>Ram</b>			
2012	2015	C/V	H11	H11	-
2011	2011	Dakota	H13	*	-
2013	2015	Pickup	H11	9005	H10
2013	2015	Pickup W/ Projector H/L	-	9005	9006
2011	2012	Pickup	H13	*	H10
2011	2012	Pickup W/ 4 H/L	H11	9005	H10
2014	2015	Promaster	H7	H7	H11
2014	2015	Promaster City	H11	9005	H11
Start	End	<b>Saab</b>			
2005	2006	9-2X	H1	9005	9006
2009	2011	9-3	H11	H7	H8
2004	2007	9-3	H7	H7	H3
2010	2011	9-5	H7	9005	H10
2008	2009	9-5	H7	H7	H8
2006	2007	9-5	H7	H7	H8

Year Range		Auto Make/Model	Low Beam	High Beam	Fog Beam
2003	2005	9-5	H7	H7	H1
2005	2009	9-7X	H11	9005	H11
Start	End	<b>Saturn</b>			
2007	2009	Aura	H11	9005	H11
2003	2007	Ion	9007	*	-
2003	2005	L Series	H11	9005	-
2007	2010	Outlook	H11	9005	H11
2007	2010	Sky	H11	H9	H11
2008	2010	Vue	H11	9005	H8
2002	2007	Vue	9006	9005	880
Start	End	<b>Scion</b>			
2013	2015	Fr-S	H11	9005	-
2012	2015	lq	H11	9005	-
2009	2013	Tc	H11	9005	-
2008	2008	Tc	9006	9005	-
2008	2008	Tc W/ Projector H/L	H11	9005	-
2005	2007	Tc	9006	9005	-
2004	2006	Xa	H4	*	9006
2008	2015	Xb	H11	9005	-
2004	2006	Xb	H4	*	9006
2008	2014	Xd	H4	*	-
Start	End	<b>Smart</b>			
2008	2015	Fortwo	H7	H7	H11
2005	2007	Fortwo	H7	H1	H3
Start	End	<b>Subaru</b>			
2006	2007	B9 Tribeca	H7	H9	H3
2003	2006	Baja	9007	*	9006
2003	2006	Baja W/ 4 H/L	H1	9005	9006
2014	2015	Forester	H11	9005	H16
2009	2013	Forester	H11	9005	9006
2006	2008	Forester	H1	9005	9006
2003	2005	Forester	H4	*	H3
2012	2015	Impreza	H11	9005	-
2008	2011	Impreza	H11	9005	9006
2006	2007	Impreza	H7	9005	H3
2004	2005	Impreza	H1	9005	H3
2015	2015	Legacy	H11	9005	,
2013	2014	Legacy	H7	9005	H16
2010	2012	Legacy	H7	9005	H11
2008	2009	Legacy	H7	9005	9006
2005	2007	Legacy	H7	9005	H3
2015	2015	Outback	H11	9005	,
2010	2014	Outback	H7	9005	H11
2005	2009	Outback	H7	9005	9006
2008	2014	Tribeca	H7	9005	H3
2015	2015	Wrx	H11	9005	H16
2011	2014	Wrx	H11	9005	9006

Year Range		Auto Make/Model	Low Beam	High Beam	Fog Beam
2008	2010	Wrx	H11	9005	9006
2006	2007	Wrx	H7	9005	H3
2004	2005	Wrx	H1	9005	H3
2015	2015	Wrx Sti	-	9005	H16
2008	2014	Wrx Sti	H11	9005	9006
2006	2007	Wrx Sti	-	9005	H3
2004	2005	Wrx Sti	-	9005	H3
2013	2015	Xv Crosstrek	H11	9005	-
Start	End	<b>Suzuki</b>			
2005	2007	Aerio	H4	*	H8
2009	2012	Equator	9007	*	H11
2004	2008	Forenza	H7	H1	-
2006	2013	Grand Vitara	H7	9005	H11
2001	2005	Grand Vitara	H4	*	H3
2010	2013	Kizashi	H7	H7	H11
2005	2008	Reno	H7	H1	-
2004	2010	Swift	H4	*	-
2007	2013	Sx4	9007	*	H11
2004	2006	Verona	H7	9005	-
2007	2009	XI-7	H13	*	H11
2006	2006	XI-7	H4	*	H11
2002	2005	XI-7	H4	*	H3
Start	End	<b>Tesla</b>			
2012	2015	Model S	9005	*	-
Start	End	<b>Toyota</b>			
2014	2015	4Runner	H11	9005	H16
2010	2014	4Runner	H11	9005	H11
2006	2009	4Runner	H11	9005	9006
2003	2005	4Runner	9006	9005	9006
2013	2015	Avalon	9005	9005	H11
2011	2012	Avalon	H11	9005	H11
2008	2010	Avalon	H11	-	H11
2005	2007	Avalon	9006	9005	9006
2015	2015	Camry	H11	9005	-
2012	2014	Camry	H11	9005	H11
2007	2011	Camry Incl. Hybrid	H11	9005	H11
2002	2006	Camry	9006	9005	9006
2003	2005	Celica	H7	9005	H3
2014	2015	Corolla	-	9005	H16
2009	2013	Corolla	9006	9005	H11
2005	2008	Corolla	9006	9005	9006
2003	2005	Echo	H4	*	9006
2007	2014	Fj Cruiser	H4	*	-
2014	2015	Highlander	H11	9005	H16
2011	2013	Highlander	H11	9005	-
2008	2010	Highlander	H4	*	H11
2004	2007	Highlander	9006	9005	9006

X THE BULB LISTED IN THE LOW BEAM COLUMN IS A DUAL FILAMENT BULB THAT CONTAINS BOTH HIGH/LOW BEAMS.

I THIS VEHICLE HAS AN TWO OPTIONS, PLEASE CHECK OWNER'S MANUAL TO ENSURE CORRECT BULB TYPE

Year Range			Auto Make/Model	Low Beam	High Beam	Fog Beam
2013	2015	Land Cruiser	-	9005	H16	
2008	2011	Land Cruiser	H11	9005	9006	
1999	2007	Land Cruiser	9006	9005	9006	
2009	2014	Matrix	9006	9005	H11	
2003	2008	Matrix	9006	9005	9006	
2003	2005	Mr2 Spyder	H7	9005	9006	
2012	2015	Prius	H11	9005	H16	
2010	2011	Prius	H11	9005	H11	
2006	2009	Prius	H4	*	9006	
2012	2014	Prius C	H11	9005	H16	
2015	2015	Prius V	H11	9005	H16	
2012	2014	Prius V	H11	9005	-	
2013	2015	Rav4	9005	9005	H16	
2006	2012	Rav4	9006	9005	H11	
2001	2005	Rav4	H4	*	-	
2008	2015	Sequoia	H11	9005	H10	
2001	2007	Sequoia	H4	*	9006	
2011	2015	Sienna	H11	9005	H11	
2006	2010	Sienna	9006	9005	9006	
2004	2005	Sienna	9006	9005	H3	
2007	2008	Solara	H11	-	H11	
2004	2006	Solara	H11	9005	H10	
2016	2016	Tacoma	H4	*	H11	
2012	2015	Tacoma	H4	*	H11	
2004	2011	Tacoma	H4	*	H10	
2014	2015	Tundra	H4	*	H16	
2007	2013	Tundra	H11	9005	H10	
1999	2006	Tundra	H4	*	9006	
2013	2015	Venza	H11	9005	H11	
2009	2012	Venza	H11	9005	H11	
2015	2015	Yaris	H4	*	H16	
2006	2014	Yaris	H4	*	H11	
Start	End	Volkswagen				
2012	2015	Beetle	H4	*	H8	
2006	2010	Beetle	H7	H7	H11	
2003	2005	Beetle	H1	H1	H1	
2014	2015	Cc	-	-	H8	
2012	2013	Cc	-	-	H8	
2009	2011	Cc	H7	H7	H11	
2014	2015	Cc R-Line	-	-	9006	
2012	2015	Eos	H7	H7	9006	
2007	2011	Eos	H7	H7	9006	
2015	2015	Golf	H7	-	H11	
2010	2014	Golf	H7	-	9006	
2003	2009	Golf	H7	H7	H3	
2015	2015	Gti	H7	-	-	
2010	2014	Gti	H7	-	9006	

Year Range			Auto Make/Model	Low Beam	High Beam	Fog Beam
2006	2009	Gti	H7	H7	9006	
2003	2005	Gti	H7	H7	H3	
2015	2015	Jetta	H7	H7	H8	
2013	2014	Jetta	H7	H7	-	
2011	2012	Jetta	H7	H7	9006	
2010	2010	Jetta	H7	H7	9006	
2006	2009	Jetta	H7	H7	9006	
2010	2014	Jetta Sportwagen	H7	-	9006	
2012	2015	Passat	H7	H7	H8	
2006	2010	Passat	H7	H7	9006	
2002	2005	Passat	H7	H7	H3	
2009	2010	Passat Cc	H7	H7	H11	
2004	2006	Phaeton	-	-	H11	
2008	2008	R32	H7	H7	9006	
2006	2009	Rabbitt	H7	H7	9006	
2010	2014	Routan	H11	H11	-	
2009	2009	Routan	H11	H11	H10	
2012	2015	Tiguan	H7	-	9006	
2009	2011	Tiguan	H7	H7	9006	
2015	2015	Touareg	-	-	H11	
2011	2014	Touareg	-	-	9006	
2004	2010	Touareg	H7	H9	H11	
2004	2010	Touareg W/ Hid	-	H7	H11	
Start	End	Volvo				
2012	2013	C30	H11	9005	H8	
2012	2013	C30 W/ Adaptive Hid	-	H7	H8	
2010	2011	C30	H7	H9	H8	
2010	2011	C30 W/ Adaptive Hid	-	H7	H8	
2007	2009	C30	H11	9005	H11	
2011	2013	C70	H11	9005	H8	
2011	2013	C70 W/ Hid	-	H7	H8	
2011	2013	C70 W/ Adaptive Hid	-	H7	H8	
2006	2010	C70	H11	9005	H11	
2006	2010	C70 W/ Hid	-	H7	H11	
2008	2011	S40	H11	9005	H8	
2008	2011	S40 W/ Hid	-	H7	H8	
2005	2007	S40	H11	9005	H11	
2005	2007	S40 W/ Hid	-	H7	H11	
2014	2015	S60	H7	H9	-	
2012	2013	S60	H11	H9	-	
2011	2011	S60	H7	H9	-	
2007	2009	S60	H11	H9	H1	
2005	2006	S60	H11	H9	-	
2014	2015	S80	H7	H9	-	
2014	2015	S80 W/ Hid	-	H7	-	
2012	2013	S80	H11	H9	H8	
2012	2013	S80 W/ Hid	-	H7	H8	



Year Range			Low Beam	High Beam	Fog Beam
2007	2011	S80	H7	H9	H8
2007	2011	S80 W/ Hid	-	H7	H8
2004	2006	S80	H7	H7	H1
2004	2006	S80 W/ Hid	-	9005	H1
2008	2011	V50	H11	9005	H8
2008	2011	V50 W/ Hid	-	H7	H8
2005	2007	V50	H11	9005	H11
2015	2015	V60	H7	H9	-
2007	2010	V70	H11	H9	H8
2007	2010	V70 W/ Hid	-	H7	H8
2005	2006	V70	H11	H9	-
2014	2015	Xc60	H11	H9	-
2014	2015	Xc60 W/ Hid	-	H7	-
2010	2013	Xc60	H11	H9	H8
2010	2013	Xc60 W/ Hid	-	H7	H8
2014	2015	Xc70	H11	H9	-
2014	2015	Xc70 W/ Hid	-	H7	-
2007	2013	Xc70	H11	H9	H8
2007	2013	Xc70 W/ Hid	-	H7	H8
2005	2006	Xc70	H11	H9	-
2013	2014	Xc90	H11	H7	-

**BULB IDENTIFICATION**

- 1) The bulb itself will have markings on it. One of the markings will give you the industry number for the bulb type.
- 2) If the bulb is from a head lamp, the bulb type is usually molded into the lens on either corner of the head light lens.
- 3) Bulb type information for your vehicle will also be printed in the owners manual.

**BULB X-REFERENCE**

H4 = 9003 or HB2  
 H10 = 9145  
 H13 = 9008  
 HB = 9005/9006  
 9004 = HB1  
 9005 = HB3  
 9006 = HB4  
 9007 = HB5  
 H1, H3, H7, H8, H9, H11, H11B, 880, 881 are referred to as such.

**BULB QUICK REFERENCE GUIDE**

Bulb Type	Plasma Ion		Yellow LED	Clear Halogen	Night Tech		Xtreme White		White LED
	SINGLE	PAIR	PAIR	SINGLE	SINGLE	PAIR	SINGLE	PAIR	PAIR
H1	13521	13501	-	-	11701	10701	11155	11655	-
H3 (55W)	13555	13556	-	13055/13455	11703	10703	15213	15223	-
H3 (85W)	-	-	-	13085	-	-	15286	-	-
H4	13514	13504	-	-	11704	10704	15214	15224	17204
H7	13517	13507	-	-	11707	10707	17155	17655	-
H8	18135	18535	17502	-	-	-	18035	18235	17202
H9	-	-	-	-	-	-	19165	19665	17202
H10	-	-	-	-	-	-	15110	15210	-
H11	13531	13511	17502	-	11711	10711	15111	15211	17202
H11B	-	-	-	-	-	-	15401	15411	-
H16	13519	13509	17502	-	-	-	-	-	17202
HB	13516	13506	-	-	-	-	-	-	-
880	-	-	-	-	-	-	18881	18880	-
881	-	-	-	-	-	-	18813	18803	-
9004 (HB1)	-	-	-	-	-	-	19014	19614	-
9005 (HB3)	-	-	-	-	11725	10725	19015	19615	17201
9006 (HB4)	-	-	17501	-	11726	10726	19016	19616	17201
9007 (HB5)	-	-	-	-	11727	10727	19017	19617	-
9008 (H13)	-	-	-	-	11728	10728	19018	19618	-
168	-	-	-	-	-	-	-	19172	19107

X THE BULB LISTED IN THE LOW BEAM COLUMN IS A DUAL FILAMENT BULB THAT CONTAINS BOTH HIGH/LOW BEAMS.

I THIS VEHICLE HAS AN TWO OPTIONS, PLEASE CHECK OWNER'S MANUAL TO ENSURE CORRECT BULB TYPE

Make	Model	Year	Driver	Pass.	Super Silicone		Si - Tech		Aero Vogue	
					Driver	Pass.	Driver	Pass.	Driver	Pass.
Acura	Ilx	2013-2016	26	19	95065	95048	97065	97048	96165	96148
Acura	MDX	2014-2016	26	20	95065	95050	97065	97050	96165	96150
Acura	MDX	2007-2013	26	21	95065	95053	97065	97053	96165	96153
Acura	MDX	2001-2006	24	21	95060	95053	97060	97053	96160	96153
Acura	NSX	1991-2005	22	22	95055	95055	97055	97055	96155	96155
Acura	RDX	2013-2015	26	16	95065	95040	97065	97040	96165	96140
Acura	RLX	2014-2015	26	19	95065	95048	97065	97048	96165	96148
Acura	RSX	2002-2006	24	20	95060	95050	97060	97050	96160	96150
Acura	TL	2009-2014	26	19	95065	95048	97065	97048	96165	96148
Acura	TL	2004-2008	26	19	95065	95048	97065	97048	96165	96148
Acura	TLX	2015-2015	26	17	95065	95043	97065	97043	96165	96143
Acura	TSX	2005-2008	24	16	95060	95040	97060	97040	96160	96140
Acura	TSX	2004-2005	26	16	95065	95040	97065	97040	96165	96140
Acura	ZDX	2010-2013	24	19	95060	95048	97060	97048	96160	96148
Audi	A3	2014-2015	26	19	-	-	97065	97048	-	-
Audi	A3	2013-2013	24	19	-	-	97060	97048	-	-
Audi	A3	2006-2012	22	20	-	-	97055	97050	-	-
Audi	A4 / S4	2009-2014	24	20	-	-	97060	97050	-	-
Audi	A5 / S5 / Rs5	2009-2015	24	20	-	-	97060	97050	-	-
Audi	A6 / S6	2012-2016	26	21	-	-	97065	97053	-	-
Audi	A7 / S7	2012-2016	26	21	-	-	97065	97053	-	-
Audi	A8 / S8	2014-2015	26	21	-	-	97065	97053	-	-
Audi	A8 / S8	2011-2013	26	20	-	-	97065	97050	-	-
Audi	Allroad Quattro	2013-2015	24	20	-	-	97060	97050	-	-
Audi	Q3	2015-2015	24	21	-	-	97060	97053	-	-
Audi	Q5	2010-2015	24	20	-	-	97060	97050	-	-
Audi	Q7	2007-2015	26	26	-	-	97065	97065	-	-
Audi	Tt	2008-2015	21	21	-	-	97053	97053	-	-
Audi	Tt	2005-2006	21	21	-	-	97053	97053	-	-
Bmw	1 Series	2008-2013	20	20	-	-	97050	97050	-	-
Bmw	2-Series	2015-2015	22	18	-	-	97055	97045	-	-
Bmw	3 Series Sedan/Wagon	2010-2015	24	19	-	-	97060	97048	-	-
Bmw	3 Series Coupe / Conv.	2011-2013	24	18	-	-	97060	97045	-	-
Bmw	3 Series Sedan	2006-2009	24	19	-	-	97060	97048	-	-
Bmw	3 Series Coupe / Conv.	2006-2010	24	19	-	-	97060	97048	-	-
Bmw	3 Series Wagon	2007-2009	24	19	-	-	97060	97048	-	-
Bmw	3 Series - Except 328	1999-2005	22	20	95055	95050	97055	97050	96155	96150
Bmw	4 Series	2014-2015	24	19	-	-	97060	97048	-	-
Bmw	5 Series	2011-2015	26	18	-	-	97065	97045	-	-
Bmw	6 Series / Gran Coupe	2011-2016	26	17	-	-	97065	97043	-	-
Bmw	7 Series	2009-2015	26	19	-	-	97065	97048	-	-
Bmw	I-3	2014-2015	28	21	-	-	-	97053	-	-
Bmw	X1	2013-2015	24	18	-	-	97060	97045	-	-
Bmw	X3	2011-2016	26	20	-	-	97065	97050	-	-
Bmw	X3	2004-2010	22	20	95055	95050	97055	97050	96155	96150
Bmw	X5	2014-2015	24	20	95060	95050	97060	97050	96160	96150
Bmw	X5	2012 (late)- 2013	24	20	-	-	97060	97050	-	-



Make	Model	Year	Driver	Pass.	Super Driver	Silicone Pass.	Si - Tech Driver	Pass.	Aero Driver	Vogue Pass.
Bmw	X5	2007-2012 (early)	24	20	-	-	97060	97050	-	-
Bmw	X5	1999-2006	24	22	95060	95055	97055	97055	-	-
Bmw	X6	2013-2015	24	20	-	-	97060	97050	-	-
Bmw	X6	2009-2012	24	20	-	-	97060	97050	-	-
Bmw	Z4	2003-2016	21	20	95053	95050	97053	97050	-	-
Buick	Century	1997-2005	22	22	95055	95055	97055	97055	96155	96155
Buick	Enclave	2012-2015	25	21	-	-	97060	97053	-	-
Buick	Enclave	2008-2011	24	21	-	-	97060	97053	-	-
Buick	Encore	2013-2015	26	14	-	-	97065	-	-	-
Buick	La Crosse	2010-2015	26	18	95065	95045	97065	97045	96165	96145
Buick	La Crosse	2005-2009	22	22	95055	95055	97055	97055	96155	96155
Buick	Le Sabre	1997-2005	22	22	95055	95055	97055	97055	96155	96155
Buick	Lucerne	2006-2011	24	21	-	-	97060	97053	-	-
Buick	Park Ave	1997-2005	22	22	95055	95055	97055	97055	96155	96155
Buick	Rainier	2007-2008	22	22	95055	95055	97055	97055	96155	96155
Buick	Rainier	2004-2006	22	22	95055	95055	97055	97055	96155	96155
Buick	Regal	2010-2015	24	18	95060	95045	97060	97045	96160	96145
Buick	Rendezvous	2002-2007	24	22	95060	95055	97060	97055	96160	96155
Buick	Terraza	2005-2007	24	22	95060	95055	97060	97055	96160	96155
Buick	Verano	2012-2015	27	25	-	-	97065	97060	-	-
Cadillac	Ats	2013-2015	22	18	95055	95045	97055	97045	96155	96145
Cadillac	Cts Sedan	2014-2015	24	18	-	-	97060	97045	-	-
Cadillac	Cts Coupe & Wagon	2014-2015	22	19	95055	95048	97055	97048	96155	96148
Cadillac	Cts	2008-2015	22	19	95055	95048	97055	97048	96155	96148
Cadillac	Cts	2003-2007	22	21	95055	95053	97055	97053	96155	96153
Cadillac	Cts-V (All)	2010-2015	22	19	95055	95048	97055	97048	96155	96148
Cadillac	Deville	1991-2005	22	22	95055	95055	97055	97055	-	-
Cadillac	Dts	2006-2011	22	22	95055	95055	97055	97055	96155	96155
Cadillac	Elr	2014-2014	27	27	-	-	97065	97065	-	-
Cadillac	Escalade	2015-2015	22	22	95055	95055	97055	97055	96155	96155
Cadillac	Escalade	2009-2014	22	22	95055	95055	97055	97055	96155	96155
Cadillac	Escalade	2008-2008	22	22	95055	95055	97055	97055	96155	96155
Cadillac	Escalade	2007-2007	22	22	-	-	97055	97055	-	-
Cadillac	Escalade	2002-2006	22	22	95055	95055	97055	97055	96155	96155
Cadillac	Srx	2010-2015	26	17	-	-	97065	97043	-	-
Cadillac	Srx	2004-2009	22	21	95055	95053	97055	97053	96155	96153
Cadillac	Sts	2005-2011	22	21	-	-	97055	97053	-	-
Cadillac	Xlr	2004-2009	22	22	95055	95055	97055	97055	96155	96155
Cadillac	Xts	2013-2015	26	18	95065	95045	97065	97045	96165	96145
Chevrolet	Astro	1985-2005	18	18	95045	95045	97045	97045	-	-
Chevrolet	Avalanche	2009-2013	22	22	95055	95055	97055	97055	96155	96155
Chevrolet	Avalanche	2007-2008	22	22	-	-	97055	97055	-	-
Chevrolet	Avalanche	2002-2006	22	22	95055	95055	97055	97055	96155	96155
Chevrolet	Aveo	2004-2011	22	19	95055	95048	97055	97048	96155	96148
Chevrolet	Aveo - 5 Door	2008-2011	22	18	95055	95045	97055	97045	96155	96145
Chevrolet	Blazer	1995-2005	20	20	95050	95050	97050	97050	96150	96150
Chevrolet	Camaro	2010-2015	24	21	95060	95053	97060	97053	96160	96153
Chevrolet	Caprice Ppv	2012-2014	26	15	-	-	97065	97065	-	-

Make	Model	Year	Driver	Pass.	Super Silicone		Si - Tech		Aero Vogue	
					Driver	Pass.	Driver	Pass.	Driver	Pass.
Chevrolet	Captiva Sport	2012-2013	24	16	95060	95040	97060	97040	96160	96140
Chevrolet	Cavalier	1995-2005	22	17	95055	95043	97055	97043	96155	96143
Chevrolet	City Express	2015-2015	22	16	95055	95040	97055	97040	96155	96140
Chevrolet	Cobalt	2005-2010	22	17	95055	95043	97055	97043	96155	96143
Chevrolet	Colorado	2015-2015	22	18	-	-	97055	97045	-	-
Chevrolet	Colorado	2004-2012	22	19	95055	95048	97055	97048	96155	96148
Chevrolet	Corvette	2014-2015	22	20	95055	95050	97055	97050	96155	96150
Chevrolet	Corvette	2005-2013	21	21	95053	95053	97053	97053	96153	96153
Chevrolet	Cruze	2011-2015	24	18	95060	95045	97060	97045	96160	96145
Chevrolet	Equinox	2010-2015	24	17	-	-	97060	97043	-	-
Chevrolet	Equinox	2005-2009	24	19	95060	95048	97060	97048	96160	96148
Chevrolet	Express	1996-2015	22	22	95055	95055	97055	97055	96155	96155
Chevrolet	Hhr	2006-2011	18	18	95045	95045	97045	97045	96145	96145
Chevrolet	Impala	2014-2015	24	19	95060	95048	97060	97048	96160	96148
Chevrolet	Impala	2006-2013	22	22	95055	95055	97055	97055	96155	96155
Chevrolet	Impala	2000-2005	22	22	95055	95055	97055	97055	96155	96155
Chevrolet	Impala	1994-2005	22	22	95055	95055	97055	97055	-	-
Chevrolet	Impala Classic	2013-2014	22	22	95055	95055	97055	97055	96155	96155
Chevrolet	Malibu	2013-2015	24	19	95060	95048	97060	97048	96160	96148
Chevrolet	Malibu	2008-2012	24	21	-	-	97060	97053	-	-
Chevrolet	Malibu / Maxx	2004-2007	22	20	95055	95050	97055	97050	96155	96150
Chevrolet	Malibu Classic	2004-2005	22	19	95055	95048	97055	97048	96155	96148
Chevrolet	Monte Carlo	2006-2007	22	22	95055	95055	97055	97055	96155	96155
Chevrolet	Monte Carlo	1998-2005	22	19	95055	95048	97055	97048	96155	96148
Chevrolet	Orlando (Canada)	2010-2012	24	19	95060	95048	97060	97048	96160	96148
Chevrolet	Silverado 2500 / 3500	2014-2014	22	22	-	-	97055	97055	-	-
Chevrolet	Silverado	2007-2013	22	22	-	-	97055	97055	-	-
Chevrolet	Silverado	1999-2006	22	22	95055	95055	97055	97055	96155	96155
Chevrolet	Silverado Classic	2007-2007	22	22	95055	95055	97055	97055	96155	96155
Chevrolet	Sonic	2012-2015	26	15	-	-	97065	-	-	-
Chevrolet	Spark	2013-2015	24	16	-	-	97060	97040	-	-
Chevrolet	Ss	2014-2014	26	15	-	-	97065	-	-	-
Chevrolet	Suburban	2015-2015	22	22	95055	95055	97055	97055	96155	96155
Chevrolet	Suburban	2009-2014	22	22	95055	95055	97055	97055	96155	96155
Chevrolet	Suburban	2007-2008	22	22	-	-	97055	97055	-	-
Chevrolet	Suburban	2000-2006	22	22	95055	95055	97055	97055	96155	96155
Chevrolet	Tahoe	2015-2015	22	22	95055	95055	97055	97055	96155	96155
Chevrolet	Tahoe	2009-2014	22	22	95055	95055	97055	97055	96155	96155
Chevrolet	Tahoe	2007-2008	22	22	-	-	97055	97055	-	-
Chevrolet	Tahoe	2000-2006	22	22	95055	95055	97055	97055	96155	96155
Chevrolet	Tahoe Police	2011-2013	22	22	-	-	97055	97055	-	-
Chevrolet	Trailblazer	2007-2009	22	22	95055	95055	97055	97055	96155	96155
Chevrolet	Trailblazer	2002-2006	22	22	95055	95055	97055	97055	96155	96155
Chevrolet	Traverse	2012-2015	25	21	-	-	97060	97053	-	-
Chevrolet	Traverse	2009-2011	24	21	-	-	97060	97053	-	-
Chevrolet	Trax	2015-2015	26	14	-	-	97065	-	-	-
Chevrolet	Uplander	2005-2008	24	22	95060	95055	97060	97055	96160	96155
Chevrolet	Venture	1997-2005	24	24	95060	95060	97060	97060	96160	96160
Chevrolet	Volt	2011-2015	26	26	-	-	97065	97065	-	-



Make	Model	Year	Driver	Pass.	Super Silicone Driver	Super Silicone Pass.	Si - Tech Driver	Si - Tech Pass.	Aero Vogue Driver	Aero Vogue Pass.
Chrysler	200	2015-2015	27	19	95065	95048	97065	97048	96165	96148
Chrysler	200	2011-2014	24	22	95060	95055	97060	97055	96160	96155
Chrysler	300	2011-2015	24	21	95060	95053	97060	97053	96160	96153
Chrysler	300	2005-2010	22	22	95055	95055	97055	97055	96155	96155
Chrysler	Aspen	2007-2009	26	21	95065	95053	97065	97053	-	-
Chrysler	Crossfire	2003-2008	20	22	95050	95055	97050	97055	-	-
Chrysler	Lebaron Conv.	1994-2005	19	19	95048	95048	97048	97048	-	-
Chrysler	Pacifica	2004-2008	22	22	95055	95055	97055	97055	96155	96155
Chrysler	Pt Cruiser	2001-2010	19	21	95048	95053	97048	97053	96148	96153
Chrysler	Sebring Convertible	2007-2010	22	22	95055	95055	97055	97055	96155	96155
Chrysler	Sebring Convertible	1996-2006	22	22	95055	95055	97055	97055	96155	96155
Chrysler	Sebring Coupe	2001-2005	24	21	95060	95053	97060	97053	96160	96153
Chrysler	Sebring Sedan	2007-2010	24	22	95060	95055	97060	97055	96160	96155
Chrysler	Sebring Sedan	2001-2006	22	22	95055	95055	97055	97055	96155	96155
Chrysler	Town & Country	2010 (late)-2015	26	20	95065	95050	97065	97050	-	-
Chrysler	Town & Country	2008-2010 (early)	26	20	95065	95050	97065	97050	-	-
Dodge	Avenger	2007-2014	24	22	95060	95055	97060	97055	96160	96155
Dodge	Caliber	2006-2012	24	17	95060	95043	97060	97043	96160	96143
Dodge	Challenger	2009-2015	22	22	95055	95055	97055	97055	96155	96155
Dodge	Charger	2011-2015	24	21	95060	95053	97060	97053	96160	96153
Dodge	Charger	2005-2010	22	22	95055	95055	97055	97055	96155	96155
Dodge	Dakota	2005-2011	21	21	95053	95053	97053	97053	-	-
Dodge	Dart	2013-2015	26	18	95065	95045	97065	97045	96165	96145
Dodge	Durango	2014-2015	22	21	95055	95053	97055	97053	96155	96153
Dodge	Durango	2011-2013	22	21	95055	95053	97055	97053	96155	96153
Dodge	Durango	2004-2009	26	21	95065	95053	97065	97053	-	-
Dodge	Gr. Caravan & Caravan	2010 (late)-2015	26	20	95065	95050	97065	97050	-	-
Dodge	Gr. Caravan & Caravan	2008-2010 (early)	26	20	95065	95050	97065	97050	-	-
Dodge	Journey	2008-2015	24	19	95060	95048	97060	97048	96160	96148
Dodge	Magnum	2005-2008	22	22	95055	95055	97055	97055	96155	96155
Dodge	Neon	2000-2005	22	19	95055	95048	97055	97048	96155	96148
Dodge	Nitro	2007-2012	19	19	95048	95048	97048	97048	96148	96148
Dodge	Pickup, Full Size	2010-2011	22	22	95055	95055	97055	97055	96155	96155
Dodge	Pickup, Full Size (Ram)	2002-2009	24	24	95060	95060	97060	97060	96160	96160
Dodge	Sprinter	2008-2011	26	24	-	-	97065	97060	-	-
Dodge	Sprinter	2003-2007	24	22	95060	95055	97055	97055	-	-
Dodge	Stratus	1996-2006	22	22	95055	95055	97055	97055	96155	96155
Dodge	Stratus Coupe	2001-2005	24	21	95060	95053	97060	97053	96160	96153
Fiat	500 / Abarth	2011-2015	24	14	95060	95035	97060	-	96160	96135
Fiat	500L	2014-2015	26	15	-	-	97065	-	-	-
Ford	C-Max	2012-2013	29	25	-	-	-	97060	-	-
Ford	Crown Victoria	2003-2011	22	22	95055	95055	97055	97055	96155	96155
Ford	E - Series Van	1998-2014	20	20	95050	95050	97050	97050	96150	96150
Ford	Edge	2007-2014	26	20	95065	95050	97065	97050	96165	96150
Ford	Escape	2008-2012	20	20	-	-	97050	97050	-	-
Ford	Escape	2004-2007	20	18	95050	95045	97050	97045	96150	96145

Make	Model	Year	Driver	Pass.	Super Driver	Silicone Pass.	Si - Tech Driver	Pass.	Aero Driver	Vogue Pass.
Ford	Excursion	2000-2005	20	20	95050	95050	97050	97050	96150	96150
Ford	Expedition	2009-2015	22	22	95055	95055	97055	97055	96155	96155
Ford	Expedition	2008-2008	22	22	95055	95055	97055	97055	96155	96155
Ford	Expedition	1997-2007	20	20	95050	95050	97050	97050	96150	96150
Ford	Explorer	2011-2015	26	22	-	-	97065	97055	-	-
Ford	Explorer	2005-2010	20	20	95050	95050	97050	97050	96150	96150
Ford	Explorer Sport-Trac	2006-2008	20	20	95050	95050	97050	97050	96150	96150
Ford	Explorer Sport-Trac	1999-2005	18	18	95045	95045	97045	97045	96145	96145
Ford	F Series Super Duty	2011-2015	22	22	95055	95055	97055	97055	96155	96155
Ford	F Series - Super Duty	2001-2010	20	20	95050	95050	97050	97050	96150	96150
Ford	F Series Pickup	2012 (late)-2015	22	22	95055	95055	97055	97055	96155	96155
Ford	F Series Pickup	2009-2012 (early)	22	22	95055	95055	97055	97055	96155	96155
Ford	F Series Pickup	1999-2008	20	20	95050	95050	97050	97050	96150	96150
Ford	F Series Pickup (All)	2012 (late)-2013	22	22	95055	95055	97055	97055	96155	96155
Ford	Fiesta	2011-2015	25	16	-	-	97060	97040	-	-
Ford	Five Hundred	2007-2007	24	20	-	-	97060	97050	-	-
Ford	Five Hundred	2005-2006	24	20	-	-	97060	97050	-	-
Ford	Flex	2009-2015	24	22	95060	95055	97055	97055	-	-
Ford	Focus	2008-2011	22	19	95055	95048	97055	97048	96155	96148
Ford	Focus	2000-2007	22	19	95055	95048	97055	97048	96155	96148
Ford	Freestar	2004-2007	24	20	95060	95050	97055	97050	-	-
Ford	Freestyle	2007-2007	24	20	-	-	97060	97050	-	-
Ford	Freestyle	2005-2006	24	20	-	-	97060	97050	-	-
Ford	Fusion	2013-2015	27	27	-	-	97060	97060	-	-
Ford	Fusion	2006-2012	24	19	95060	95048	97060	97048	96160	96148
Ford	Mustang	2010-2015	22	20	-	-	97055	97050	-	-
Ford	Mustang	2005-2009	22	20	95055	95050	97055	97050	96155	96150
Ford	Ranger	1993-2012	18	18	95045	95045	97045	97045	96145	96145
Ford	Taurus	2010-2015	26	20	-	-	97065	97050	-	-
Ford	Taurus	2008-2009	24	20	-	-	97060	97050	-	-
Ford	Taurus	1996-2006	24	20	95060	95050	97060	97050	96160	96150
Ford	Taurus X	2008-2009	24	20	-	-	97060	97050	-	-
Ford	Thunderbird	2002-2005	24	22	95060	95055	97060	97055	96160	96155
Ford	Transit Connect	2010-2013	26	18	95065	95045	97065	97045	-	-
G M C	Acadia	2012-2015	25	21	-	-	97060	97053	-	-
G M C	Acadia	2007-2011	24	21	-	-	97060	97053	-	-
G M C	Canyon	2015-2015	22	18	-	-	97055	97045	-	-
G M C	Canyon	2004-2012	22	19	95055	95048	97055	97048	96155	96148
G M C	Envoy	2007-2009	22	22	95055	95055	97055	97055	96155	96155
G M C	Envoy	2002-2006	22	22	95055	95055	97055	97055	96155	96155
G M C	Envoy Xuv	2004-2006	22	22	95055	95055	97055	97055	96155	96155
G M C	Safari	1985-2005	18	18	95045	95045	97045	97045	-	-
G M C	Savana	1997-2015	22	22	95055	95055	97055	97055	96155	96155
G M C	Sierra	2007-2013	22	22	-	-	97055	97055	-	-
G M C	Sierra	1999-2006	22	22	95055	95055	97055	97055	96155	96155
G M C	Sierra 2500 / 3500	2014-2014	22	22	-	-	97055	97055	-	-
G M C	Sierra Classic	2007-2007	22	22	95055	95055	97055	97055	96155	96155



Make	Model	Year	Driver	Pass.	Super Driver	Silicone Pass.	Si - Tech Driver	Pass.	Aero Driver	Vogue Pass.
G M C	Terrain	2010-2015	24	17	-	-	97060	97043	-	-
G M C	Yukon (All)	2015-2015	22	22	95055	95055	97055	97055	96155	96155
G M C	Yukon (All)	2009-2014	22	22	95055	95055	97055	97055	96155	96155
G M C	Yukon (All)	2007-2008	22	22	-	-	97055	97055	-	-
G M C	Yukon (All)	2000-2006	22	22	95055	95055	97055	97055	96155	96155
Honda	Accord	2003-2007	26	18	95065	95045	97065	97045	96165	96145
Honda	Civic	2001-2005	21	19	95053	95048	97053	97048	96153	96148
Honda	Civic Coupe	2012-2015	28	24	-	95060	-	97060	96170	96160
Honda	Civic Sedan	2012-2015	26	23	95065	95055	97065	97055	96165	96155
Honda	Civic Sedan	2006-2011	26	22	95065	95055	97065	97055	96165	96155
Honda	Civic Si	2004-2005	24	19	95060	95048	97060	97048	96160	96148
Honda	Cr-V	2002-2006	21	20	95053	95050	97053	97050	96153	96150
Honda	Cr-Z	2011-2015	26	21	95065	95053	97065	97053	96165	96153
Honda	Element	2003-2012	20	20	95050	95050	97050	97050	96150	96150
Honda	Fcx Clarity	2008-2013	28	28	-	-	-	-	96170	96170
Honda	Fit	2015-2015	28	14	-	95035	-	-	96170	96135
Honda	Fit	2009-2014	28	14	-	95035	-	-	96170	96135
Honda	Fit	2007-2008	24	16	95060	95040	97060	97040	96160	96140
Honda	Hr-V	2016-2016	26	18	95065	95045	97065	97045	96165	96145
Honda	Insight	2010-2014	26	18	95065	95045	97065	97045	96165	96145
Honda	Insight	2000-2006	22	19	95055	95048	97055	97048	96155	96148
Honda	Odyssey	2014-2015	26	22	95065	95055	97065	97055	96165	96155
Honda	Odyssey	2011-2013	26	22	95065	95055	97065	97055	96165	96155
Honda	Odyssey	2008-2010	26	22	95065	95055	97065	97055	96165	96155
Honda	Odyssey	2005-2007	26	22	95065	95055	97065	97055	96165	96155
Honda	Pilot	2009-2015	22	21	95055	95053	97055	97053	96155	96153
Honda	Pilot	2003-2008	24	21	95060	95053	97060	97053	96160	96153
Honda	Ridgeline	2009-2014	22	22	95055	95055	97055	97055	96155	96155
Honda	Ridgeline	2006-2008	24	22	95060	95055	97060	97055	96160	96155
Honda	S2000	2000-2009	16	20	95040	95050	97040	97050	96140	96150
Hummer	H 2	2003-2010	17	17	95043	95043	97043	97043	96143	96143
Hummer	H 3	2006-2010	17	17	95043	95043	97043	97043	96143	96143
Hyundai	Accent	2012-2015	26	16	95065	95040	97065	97040	96165	96140
Hyundai	Accent	2006-2011	22	16	95055	95040	97055	97040	96155	96140
Hyundai	Accent	1995-2005	22	16	95055	95040	97055	97040	96155	96140
Hyundai	Azera	2012-2014	26	18	95065	95045	97065	97045	96165	96145
Hyundai	Azera	2006-2011	24	20	95060	95050	97060	97050	96160	96150
Hyundai	Elantra	2011-2016	28	14	-	95035	-	-	96170	96135
Hyundai	Elantra	2007-2010	24	18	95060	95045	97060	97045	96160	96145
Hyundai	Elantra	2001-2006	20	18	95050	95045	97050	97045	96150	96145
Hyundai	Elantra Gt	2013-2015	28	14	-	95035	-	-	96170	96135
Hyundai	Elantra Touring	2009-2012	24	18	95060	95045	97060	97045	96160	96145
Hyundai	Entourage	2007-2010	26	18	95065	95045	97065	97045	96165	96145
Hyundai	Equus	2011-2014	24	20	95060	95050	97060	97050	96160	96150
Hyundai	Genesis Coupe	2009-2015	24	20	95060	95050	97060	97050	96160	96150
Hyundai	Genesis Sedan	2015-2015	26	16	95065	95040	97065	97040	96165	96140
Hyundai	Genesis Sedan	2012-2014	24	20	95060	95050	97060	97050	96160	96150
Hyundai	Genesis Sedan	2009-2011	24	20	-	-	97060	97050	-	-
Hyundai	Santa Fe	2007-2012	24	18	95060	95045	97060	97045	96160	96145

Make	Model	Year	Driver	Pass.	Super Driver	Silicone Pass.	Si - Tech Driver	Pass.	Aero Driver	Vogue Pass.
Hyundai	Santa Fe	2001-2006	22	20	95055	95050	97055	97050	96155	96150
Hyundai	Santa Fe / Santa Fe Sport	2013-2015	26	14	95065	95035	97065	-	96165	96135
Hyundai	Sonata	2011-2015	26	18	95065	95045	97065	97045	96165	96145
Hyundai	Sonata	2006-2010	24	19	95060	95048	97060	97048	96160	96148
Hyundai	Sonata	1994-2005	20	20	95050	95050	97050	97050	96150	96150
Hyundai	Tiburon	1997-2008	22	18	95055	95045	97055	97045	96155	96145
Hyundai	Tucson	2013-2015	24	16	95060	95040	97060	97040	96160	96140
Hyundai	Tucson	2010-2012	24	16	95060	95040	97060	97040	96160	96140
Hyundai	Tucson	2005-2009	24	16	95060	95040	97060	97040	96160	96140
Hyundai	Veloster	2012-2015	26	18	95065	95045	97065	97045	96165	96145
Hyundai	Veracruz	2007-2012	24	20	-	-	97060	97050	-	-
Hyundai	Xg350	2002-2005	22	20	95055	95050	97055	97050	96155	96150
Infiniti	Fx 35 / Fx 45	2004-2008	22	20	95055	95050	97055	97050	96155	96150
Infiniti	G 35	2003-2006	24	17	95060	95043	97060	97043	96160	96143
Infiniti	G 35 Coupe	2007-2007	24	17	95060	95043	97060	97043	96160	96143
Infiniti	M-Series	2011-2012	26	19	95065	95048	97065	97048	96165	96148
Infiniti	M-Series	2006-2010	24	19	95060	95048	97060	97048	96160	96148
Infiniti	Q 45	2002-2007	26	18	95065	95045	97065	97045	96165	96145
Infiniti	Qx 56	2004-2010	24	22	95060	95055	97060	97055	96160	96155
Isuzu	Ascender	2007-2008	22	22	95055	95055	97055	97055	96155	96155
Isuzu	Ascender	2003-2006	22	22	95055	95055	97055	97055	96155	96155
Isuzu	I Series	2006-2008	22	19	95055	95048	97055	97048	96155	96148
Jaguar	F-Type	2014-2016	22	21	95055	95053	97055	97053	96155	96153
Jaguar	S Type	2000-2008	22	22	95055	95055	97055	97055	96155	96155
Jaguar	Super V8	2005-2008	24	19	95060	95048	97060	97048	96160	96148
Jaguar	Vaden Plas	2004-2008	24	19	95060	95048	97060	97048	96160	96148
Jaguar	X F	2009-2015	22	19	-	-	97055	97048	-	-
Jaguar	X J	2011-2015	22	19	-	-	97055	97048	-	-
Jaguar	X J	2004-2010	21	21	95053	95053	97053	97053	-	-
Jaguar	X J 12	1994-2005	21		95053	-	97053	-	-	-
Jaguar	X J R	2004-2009	24	19	95060	95048	97060	97048	96160	96148
Jaguar	X K	2007-2015	22	21	95055	95053	97055	97053	96155	96153
Jaguar	X K	1997-2006	21	21	95053	95053	97053	97053	-	-
Jaguar	X K R	2000-2009	21	21	95053	95053	97053	97053	-	-
Jaguar	X Type	2002-2008	22	19	95055	95048	97055	97048	96155	96148
Jaguar	Xk Type	2007-2007	22	21	95055	95053	97055	97053	96155	96153
Jaguar	Xkr-S	2010-2013	22	21	95055	95053	97055	97053	96155	96153
Jeep	Cherokee	2014-2015	26	18	95065	95045	97065	97045	96165	96145
Jeep	Commander	2006-2010	18	18	95045	95045	97045	97045	96145	96145
Jeep	Compass	2007-2015	22	20	95055	95050	97055	97050	96155	96150
Jeep	Grand Cherokee	2014-2015	22	21	95055	95053	97055	97053	96155	96153
Jeep	Grand Cherokee	2011-2013	22	21	95055	95053	97055	97053	96155	96153
Jeep	Grand Cherokee	2005-2010	21	21	95053	95053	97053	97053	-	-
Jeep	Liberty	2008-2012	19	19	95048	95048	97048	97048	96148	96148
Jeep	Liberty	2002-2007	19	19	95048	95048	97048	97048	96148	96148
Jeep	Patriot	2011-2015	21	21	95053	95053	97053	97053	96153	96153
Jeep	Patriot	2007-2010	22	20	95055	95050	97055	97050	96155	96150
Jeep	Renegade	2015-2015	22	20	-	-	97055	97050	-	-



Make	Model	Year	Driver	Pass.	Super Driver	Silicone Pass.	Si - Tech Driver	Pass.	Aero Driver	Vogue Pass.
Jeep	Wrangler	1996-2006	13	13	95033	95033	-	-	-	-
Jeep	Wrangler / Unlimited	2007-2015	15	15	95038	95038	-	-	96138	96138
Kia	Amanti	2004-2009	24	18	95060	95045	97060	97045	96160	96145
Kia	Borrego	2009-2011	24	20	95060	95050	97060	97050	96160	96150
Kia	Cadenza	2014-2014	26	18	95065	95045	97065	97045	96165	96145
Kia	Forte	2014-2015	28	14	-	95035	-	-	96170	96135
Kia	Forte	2010-2013	24	20	95060	95050	97060	97050	96160	96150
Kia	Forte 5	2014-2015	28	14	-	95035	-	-	96170	96135
Kia	K900	2015-2015	24	20	95060	95050	97060	97050	96160	96150
Kia	Optima	2007-2015	24	18	95060	95045	97060	97045	96160	96145
Kia	Optima	2001-2006	22	20	95055	95050	97055	97050	96155	96150
Kia	Rio	2012-2015	26	16	95065	95040	97065	97040	96165	96140
Kia	Rio	2010-2011	22	16	95055	95040	97055	97040	96155	96140
Kia	Rio	2006-2009	22	16	95055	95040	97055	97040	96155	96140
Kia	Rio	2001-2005	21	17	95053	95043	97053	97043	96153	96143
Kia	Rondo	2007-2011	26	16	95065	95040	97065	97040	96165	96140
Kia	Sedona	2006-2015	26	18	95065	95045	97065	97045	96165	96145
Kia	Sedona	2002-2005	24	24	95060	95060	97060	97060	96160	96160
Kia	Sorento	2010-2016	24	20	95060	95050	97060	97050	96160	96150
Kia	Sorento	2003-2009	24	18	95060	95045	97060	97045	96160	96145
Kia	Soul	2010-2015	24	20	95060	95050	97060	97050	96160	96150
Kia	Spectra	2004-2009	24	16	95060	95040	97060	97040	96160	96140
Kia	Sportage	2011-2015	24	18	95060	95045	97060	97045	96160	96145
Kia	Sportage	2005-2010	24	16	95060	95040	97060	97040	96160	96140
Land Rover	Defender	1994-2005	13	13	95033	95033	-	-	-	-
Land Rover	Evoque	2012-2015	23	22	-	-	97055	97055	-	-
Land Rover	Freelander	2003-2005	22	21	95055	95053	97055	97053	96155	96153
Land Rover	Lr 2	2007-2015	24	20	-	-	97060	97050	-	-
Land Rover	Lr 3	2005-2009	22	22	95055	95055	97055	97055	96155	96155
Land Rover	Lr 4	2010-2015	22	22	95055	95055	97055	97055	96155	96155
Land Rover	Range Rover	2013-2015	24	20	95060	95050	97060	97050	96160	96150
Land Rover	Range Rover Sport	2014-2015	24	20	95060	95050	97060	97050	96160	96150
Land Rover	Range Rover Sport	2006-2013	22	22	95055	95055	97055	97055	96155	96155
Lexus	Ct200h	2011-2015	26	18	95065	95045	97065	97045	96165	96145
Lexus	Es	2007-2015	24	18	95060	95045	97060	97045	96160	96145
Lexus	Es	2004-2006	24	20	95060	95050	97060	97050	96160	96150
Lexus	Gs	2013-2015	26	18	95065	95045	97065	97045	96165	96145
Lexus	Gs	2006-2011	24	19	95060	95048	97060	97048	96160	96148
Lexus	Gs	1998-2005	24	20	95060	95050	97060	97050	96160	96150
Lexus	Gx	2003-2009	22	21	95055	95053	97055	97053	96155	96153
Lexus	Gx460	2010-2015	26	20	95065	95050	97065	97050	96165	96150
Lexus	Hs 250H	2010-2012	26	18	95065	95045	97065	97045	96165	96145
Lexus	Is	2014-2015	24	18	95060	95045	97060	97045	96160	96145
Lexus	Is	2006-2013	22	20	95055	95050	97055	97050	96155	96150
Lexus	Is	2001-2005	22	20	95055	95050	97055	97050	96155	96150
Lexus	Ls	2007-2015	24	17	95060	95043	97060	97043	96160	96143
Lexus	Ls	2001-2006	24	16	95060	95040	97060	97040	96160	96140
Lexus	Lx	2008-2015	24	22	95060	95055	97060	97055	96160	96155
Lexus	Lx	2000-2007	24	22	95060	95055	97060	97055	96160	96155

Make	Model	Year	Driver	Pass.	Super Silicone		Si - Tech		Aero Vogue	
					Driver	Pass.	Driver	Pass.	Driver	Pass.
Lexus	Nx	2015-2015	26	16	-	-	97065	97040	-	-
Lexus	Rc	2015-2015	24	19	95060	95048	97060	97048	96160	96148
Lexus	Rx	2010-2015	26	22	95065	95055	97065	97055	96165	96155
Lexus	Rx	2004-2009	26	22	95065	95055	97065	97055	96165	96155
Lexus	Sc	2002-2008	24	20	95060	95050	97060	97050	96160	96150
Lincoln	Aviator	2003-2005	22	22	95055	95055	97055	97055	96155	96155
Lincoln	Ls	2000-2006	24	19	95060	95048	97060	97048	96160	96148
Lincoln	Mark Lt	2006-2008	20	20	95050	95050	97050	97050	96150	96150
Lincoln	Mkc	2015-2015	26	16	-	-	97065	97040	-	-
Lincoln	Mks	2009-2015	26	20	-	-	97065	97050	-	-
Lincoln	Mkt	2010-2015	24	22	-	-	97060	97055	-	-
Lincoln	Mkx	2007-2015	26	20	95065	95050	97065	97050	96165	96150
Lincoln	Mkz	2013-2015	23	20	-	-	97055	97050	-	-
Lincoln	Mkz	2006-2012	24	19	95060	95048	97060	97048	96160	96148
Lincoln	Navigator	2009-2015	22	22	95055	95055	97055	97055	96155	96155
Lincoln	Navigator	2008-2008	22	22	95055	95055	97055	97055	96155	96155
Lincoln	Navigator	1997-2007	20	20	95050	95050	97050	97050	96150	96150
Lincoln	Town Car, Limo	1993-2011	22	22	95055	95055	97055	97055	96155	96155
Lincoln	Zephyr	2006-2006	24	19	95060	95048	97060	97048	96160	96148
Mazda	Cx 5	2013-2016	24	18	95060	95045	97060	97045	96160	96145
Mazda	Cx 7	2007-2012	26	16	95065	95040	97065	97040	96165	96140
Mazda	Cx 9	2007-2015	26	17	95065	95043	97065	97043	96165	96143
Mazda	M PV	2000-2006	24	24	95060	95060	97060	97060	96160	96160
Mazda	Mazda2	2011-2014	24	14	95060	95035	97060	-	96160	96135
Mazda	Mazda3	2014-2015	24	18	95060	95045	97060	97045	96160	96145
Mazda	Mazda3	2010-2013	24	19	95060	95048	97060	97048	96160	96148
Mazda	Mazda3	2004-2009	22	18	95055	95045	97055	97045	96155	96145
Mazda	Mazda5	2012-2015	26	16	95065	95040	97065	97040	96165	96140
Mazda	Mazda5	2006-2010	26	16	95065	95040	97065	97040	96165	96140
Mazda	Mazda6	2009-2016	24	18	95060	95045	97060	97045	96160	96145
Mazda	Mazda6	2003-2008	22	18	95055	95045	97055	97045	96155	96145
Mazda	Mx - 5 (Miata)	1990-2015	18	18	95045	95045	97045	97045	96145	96145
Mazda	Pickup, B Series	1987-2011	18	18	95045	95045	97045	97045	96145	96145
Mazda	Rx - 8	2004-2011	20	18	95050	95045	97050	97045	96150	96145
Mazda	Tribute	2008-2011	20	20	-	-	97050	97050	-	-
Mazda	Tribute	2001-2007	20	18	95050	95045	97050	97045	96150	96145
Mercedes-Benz	C - Class Model W204	2013 (late)-2015	24	24	-	-	97060	97060	-	-
Mercedes-Benz	C - Class Model W204	2009-2013 (early)	24	24	-	-	97060	97060	-	-
Mercedes-Benz	C - Class Model W204	2008-2008	24	24	-	-	97060	97060	-	-
Mercedes-Benz	Cl - Class Model C215 & C216	2000-2013	26	26	-	-	97065	97065	-	-
Mercedes-Benz	Cl - Class Model C215 & C216	2014-2014	27	27	-	-	97065	97065	-	-
Mercedes-Benz	Cla - Class	2014-2015	24	19	-	-	97060	97048	-	-
Mercedes-Benz	Cls - Class Model W218	2012-2014	24	24	-	-	97060	97060	-	-
Mercedes-Benz	Cls - Class Model W219	2006-2011	26	26	-	-	97065	97065	-	-



Make	Model	Year	Driver	Pass.	Super Silicone Driver	Super Silicone Pass.	Si - Tech Driver	Si - Tech Pass.	Aero Vogue Driver	Aero Vogue Pass.
Mercedes-Benz	E - Class Coupe/Convertible	2014-2015	24	24	-	-	97060	97060	-	-
Mercedes-Benz	E - Class Sedan	2014-2014	24	24	-	-	97060	97060	-	-
Mercedes-Benz	E - Class Sedan W212	2014 (late)-2016	24	24	-	-	97060	97060	-	-
Mercedes-Benz	E - Class Model W212	2009-2013	26	26	-	-	97065	97065	-	-
Mercedes-Benz	E - Class Model W211	2003-2008	26	26	-	-	97065	97065	-	-
Mercedes-Benz	G - Class Model 463	1990-2015	16	16	95040	95040	97040	97040	96140	96140
Mercedes-Benz	GL - Class Model X164	2013-2015	26	23	-	-	97065	97055	-	-
Mercedes-Benz	GL - Class Model X164	2007-2012	26	21	-	-	97065	97053	-	-
Mercedes-Benz	Glk - Class Model X204	2010-2015	22	19	-	-	97055	97048	-	-
Mercedes-Benz	M - Class Model W166	2012 (late)-2015	26	22	-	-	97065	97055	-	-
Mercedes-Benz	M - Class Model W164	2012 (early)-2012 (early)	28	21	-	-	-	97053	-	-
Mercedes-Benz	M - Class Model W164	2006-2011	26	21	-	-	97065	97053	-	-
Mercedes-Benz	M - Class Model W163	1998-2005	22	22	95055	95055	97055	97055	96155	96155
Mercedes-Benz	R - Class Model V251	2006-2012	26	21	-	-	97065	97053	-	-
Mercedes-Benz	S - Class Model W220	2000-2006	26	26	-	-	97065	97065	-	-
Mercedes-Benz	SI - Class Model R230	2002-2012	26	26	-	-	97065	97065	-	-
Mercedes-Benz	Slk - Class Model R172	2012-2015	22	22	-	-	97055	97055	-	-
Mercedes-Benz	Slk - Class Model R171	2005-2011	26	26	-	-	97065	97065	-	-
Mercedes-Benz	Slr - Class	2005-2009	26	26	-	-	97065	97065	-	-
Mercedes-Benz	Sprinter Truck	2008-2015	26	24	-	-	97065	97060	-	-
Mercury	Grand Marquis	2003-2010	22	22	95055	95055	97055	97055	96155	96155
Mercury	Mariner	2008-2011	20	20	-	-	97050	97050	-	-
Mercury	Mariner	2005-2007	20	18	95050	95045	97050	97045	96150	96145
Mercury	Milan	2006-2011	24	19	95060	95048	97060	97048	96160	96148
Mercury	Montego	2007-2008	24	20	-	-	97060	97050	-	-
Mercury	Montego	2005-2006	24	20	-	-	97060	97050	-	-
Mercury	Monterey	2004-2006	24	20	95060	95050	97055	97050	-	-
Mercury	Mountaineer	2005-2010	20	20	95050	95050	97050	97050	96150	96150
Mercury	Sable	2008-2009	24	20	-	-	97060	97050	-	-
Mercury	Sable	1996-2005	24	20	95060	95050	97060	97050	96160	96150
Mini	Clubman	2011-2012	18	19	95045	95048	97045	97048	96145	96148
Mini	Cooper	2002-2012	18	19	95045	95048	97045	97048	96145	96148
Mini	Countryman	2011-2015	19	20	-	-	97048	97050	-	-
Mini	Coupe / Roadster	2012-2014	20	21	-	-	97050	97053	-	-
Mini	Hardtop	2015-2015	18	19	95045	95048	97045	97048	96145	96148
Mini	Paceman	2013-2015	19	20	-	-	97048	97050	-	-
Mitsubishi	I-Miev	2012-2014	24	20	95060	95050	97060	97050	96160	96150
Mitsubishi	Eclipse	2006-2012	24	22	95060	95055	97060	97055	96160	96155
Mitsubishi	Eclipse	2000-2005	24	21	95060	95053	97055	97053	-	-
Mitsubishi	Endeavor	2004-2011	26	21	95065	95053	97065	97053	-	-
Mitsubishi	Galant	2004-2012	26	19	95065	95048	97065	97048	96165	96148
Mitsubishi	Lancer	2008-2015	26	18	95065	95045	97065	97045	96165	96145
Mitsubishi	Lancer	2002-2007	24	18	95060	95045	97060	97045	96160	96145
Mitsubishi	Mirage	2014-2015	24	16	95060	95040	97060	97040	96160	96140
Mitsubishi	Montero	2001-2006	20	20	95050	95050	97050	97050	96150	96150

Make	Model	Year	Driver	Pass.	Super Silicone		Si - Tech		Aero Vogue	
					Driver	Pass.	Driver	Pass.	Driver	Pass.
Mitsubishi	Outlander	2014-2015	26	18	95065	95045	97065	97045	96165	96145
Mitsubishi	Outlander	2010-2013	24	21	95060	95053	97060	97053	96160	96153
Mitsubishi	Outlander	2007-2009	24	21	95060	95053	97060	97053	96160	96153
Mitsubishi	Outlander	2003-2006	22	19	95055	95048	97055	97048	96155	96148
Mitsubishi	Outlander Sport	2010-2015	24	21	95060	95053	97060	97053	96160	96153
Mitsubishi	Raider	2006-2009	21	21	95053	95053	97053	97053	96153	96153
Nissan	350Z	2003-2009	20	18	95050	95045	97050	97045	96150	96145
Nissan	370Z	2009-2012	21	19	95053	95048	97053	97048	96153	96148
Nissan	Altima	2002-2006	26	17	95065	95043	97065	97043	96165	96143
Nissan	Armada	2004-2015	24	22	95060	95055	97060	97055	96160	96155
Nissan	Cube	2010-2014	20	20	95050	95050	97050	97050	96150	96150
Nissan	Frontier	2005-2015	24	18	95060	95045	97060	97045	96160	96145
Nissan	Gt - R	2010-2015	22	19	95055	95048	97055	97048	96155	96148
Nissan	Juke	2011-2015	23	14	95055	95035	97055	-	96155	96135
Nissan	Maxima	2000-2008	26	17	95065	95043	97065	97043	96165	96143
Nissan	Murano	2015-2015	26	18	95065	95045	97065	97045	96165	96145
Nissan	Murano	2004-2005	26	19	95065	95048	97065	97048	96165	96148
Nissan	Nv200	2013-2015	22	16	95055	95040	97055	97040	96155	96140
Nissan	Nv-2500/3500	2011-2014	21	21	95053	95053	97053	97053	96153	96153
Nissan	Pathfinder	2005-2012	24	18	95060	95045	97060	97045	96160	96145
Nissan	Quest	2011-2015	26	19	95065	95048	97065	97048	96165	96148
Nissan	Quest	2004-2009	26	18	95065	95045	97065	97045	96165	96145
Nissan	Rogue Select	2014-2014	26	14	95065	95035	97065	-	96165	96135
Nissan	Rogue	2009-2013	26	14	95065	95035	97065	-	96165	96135
Nissan	Sentra	2007-2012	26	16	95065	95040	97065	97040	96165	96140
Nissan	Sentra	2000-2006	22	17	95055	95043	97055	97043	96155	96143
Nissan	Titan	2004-2015	24	22	95060	95055	97060	97055	96160	96155
Nissan	Versa Hatchback	2007-2012	26	14	95065	95035	97065	-	96165	96135
Nissan	Versa Sedan	2012-2015	24	14	95060	95035	97060	-	96160	96135
Nissan	X-Terra	2005-2015	24	18	95060	95045	97060	97045	96160	96145
Pontiac	Aztek	2001-2005	24	24	95060	95060	97060	97060	96160	96160
Pontiac	Bonneville	2000-2005	22	22	95055	95055	97055	97055	96155	96155
Pontiac	G 3	2009-2009	22	18	95055	95045	97055	97045	96155	96145
Pontiac	G 5	2007-2009	22	17	95055	95043	97055	97043	96155	96143
Pontiac	G 6	2009-2010	24	21	-	-	97060	97053	-	-
Pontiac	G 6	2008-2008	24	21	-	-	97060	97053	-	-
Pontiac	G 6	2005-2007	24	21	-	-	97060	97053	-	-
Pontiac	G 8	2008-2009	26	15	-	-	97065	-	-	-
Pontiac	Grand Am	1998-2005	22	17	95055	95043	97055	97043	96155	96143
Pontiac	Grand Prix	2006-2008	22	22	95055	95055	97055	97055	96155	96155
Pontiac	Grand Prix	1997-2005	22	22	95055	95055	97055	97055	96155	96155
Pontiac	Gto	2004-2006	22	20	95055	95050	97055	97050	96155	96150
Pontiac	Montana	1998-2005	24	24	95060	95060	97060	97060	96160	96160
Pontiac	Montana Sv6	2005-2006	24	22	95060	95055	97060	97055	96160	96155
Pontiac	Solstice	2006-2009	16	22	95040	95055	97040	97055	96140	96155
Pontiac	Sunfire	1995-2005	22	17	95055	95043	97055	97043	96155	96143
Pontiac	Torrent	2006-2009	24	19	95060	95048	97060	97048	96160	96148
Pontiac	Vibe	2009-2010	26	17	95065	95043	97065	97043	96165	96143
Pontiac	Vibe	2003-2008	21	18	95053	95045	97053	97045	96153	96145



Make	Model	Year	Driver	Pass.	Super Driver	Silicone Pass.	Si - Tech Driver	Pass.	Aero Driver	Vogue Pass.
Porsche	911	2013-2015	21	23	-	-	97053	97055	-	-
Porsche	911	1998-2012	22	22	95055	95055	97055	97055	96155	96155
Porsche	Boxster	2013-2015	23	21	-	-	97055	97053	-	-
Porsche	Boxster	1998-2012	22	22	95055	95055	97055	97055	96155	96155
Porsche	Cayenne	2011-2016	25	25	-	-	97060	97060	-	-
Porsche	Cayenne	2009-2010	25	25	-	-	97060	97060	-	-
Porsche	Cayenne	2004-2008	26	26	-	-	97065	97065	-	-
Porsche	Cayman	2010-2015	23	21	-	-	97055	97053	-	-
Porsche	Cayman	2007-2009	22	22	95055	95055	97055	97055	96155	96155
Porsche	Macan	2015-2015	24	20	-	-	97060	97050	-	-
Porsche	Panamera	2014-2015	25	20	-	-	97060	97050	-	-
Porsche	Panamera	2010-2013	23	21	95055	95053	97055	97053	-	-
Ram	1500	2012-2015	22	22	95055	95055	97055	97055	96155	96155
Ram	Cargo Van	2012-2013	26	20	95065	95050	97065	97050	-	-
Ram	Promaster	2014-2014	26	22	95065	95055	97065	97055	96165	96155
Ram	Promaster City	2015-2015	24	16	-	-	97060	97040	-	-
Ram	Hd	2012-2014	22	22	95055	95055	97055	97055	96155	96155
Saab	9-3	2008-2011	22	22	-	-	97055	97055	-	-
Saab	9-3	2003-2007	22	22	95055	95055	97055	97055	96155	96155
Saab	9-5	2011-2011	24	21	95060	95053	97060	97053	96160	96153
Saab	9-5	2008-2009	22	22	95055	95055	97055	97055	96155	96155
Saab	9-5	1998-2007	23	23	95055	95055	97055	97055	-	-
Saab	9-2X	2004-2006	22	17	95055	95043	97055	97043	96155	96143
Saab	9-4X	2011-2011	26	17	-	-	97065	97043	-	-
Saab	9-7X	2006-2009	22	22	95055	95055	97055	97055	96155	96155
Saturn	Astra	2008-2009	22	18	-	-	97055	97045	-	-
Saturn	Aura	2008-2010	24	21	-	-	97060	97053	-	-
Saturn	Aura	2007-2007	24	21	-	-	97060	97053	-	-
Saturn	Ion	2003-2007	22	19	95055	95048	97055	97048	96155	96148
Saturn	Outlook	2007-2010	24	21	-	-	97060	97053	-	-
Saturn	Relay	2005-2006	24	24	95060	95060	97060	97060	96160	96160
Saturn	Sky	2007-2009	24	22	95060	95055	97060	97055	96160	96155
Saturn	Vue	2008-2010	24	16	95060	95040	97060	97040	96160	96140
Saturn	Vue	2002-2007	24	19	95060	95048	97060	97048	96160	96148
Scion	Fr-S	2013-2015	22	20	95055	95050	97055	97050	96155	96150
Scion	lq	2012-2015	24	18	95060	95045	97060	97045	96160	96145
Scion	Tc	2011-2015	24	18	95060	95045	97060	97045	96160	96145
Scion	Tc	2005-2010	26	16	95065	95040	97065	97040	96165	96140
Scion	X A	2004-2007	24	16	95060	95040	97060	97040	96160	96140
Scion	X B	2008-2015	22	20	95055	95050	97055	97050	96155	96150
Scion	X B	2004-2007	20	20	95050	95050	97050	97050	96150	96150
Scion	X D	2008-2014	26	14	95065	95035	97065	-	96165	96135
Smart	Fortwo	2008-2015	22	21	-	-	97055	97053	-	-
Subaru	Baja	2003-2006	22	20	95055	95050	97055	97050	96155	96150
Subaru	Brz	2013-2015	22	20	95055	95050	97055	97050	96155	96150
Subaru	Forester	2014-2015	26	17	95065	95043	97065	97043	96165	96143
Subaru	Forester	2009-2013	24	18	95060	95045	97060	97045	96160	96145
Subaru	Forester	2008-2008	22	19	95055	95048	97055	97048	96155	96148
Subaru	Forester	2005-2007	22	19	95055	95048	97055	97048	96155	96148

Make	Model	Year	Driver	Pass.	Super Silicone		Si - Tech		Aero Vogue	
					Driver	Pass.	Driver	Pass.	Driver	Pass.
Subaru	Impreza	2008-2011	24	16	95060	95040	97060	97040	96160	96140
Subaru	Impreza	2004-2007	22	17	95055	95043	97055	97043	96155	96143
Subaru	Impreza / Wrx	2012-2015	26	16	95065	95040	97065	97040	96165	96140
Subaru	Legacy	2015-2015	26	17	95065	95043	97065	97043	96165	96143
Subaru	Legacy	2010-2014	26	19	95065	95048	97065	97048	96165	96148
Subaru	Legacy	2005-2009	24	18	95060	95045	97060	97045	96160	96145
Subaru	Outback	2015-2015	26	17	95065	95043	97065	97043	96165	96143
Subaru	Outback	2010-2014	26	19	95065	95048	97065	97048	96165	96148
Subaru	Outback	2005-2009	24	18	95060	95045	97060	97045	96160	96145
Subaru	Tribeca	2006-2013	No Fit	20	-	95050	-	97050	-	96150
Subaru	Xv Crosstrek	2013-2015	26	16	95065	95040	97065	97040	96165	96140
Suzuki	Aerio	2002-2008	22	18	95055	95045	97055	97045	96155	96145
Suzuki	Equator	2009-2013	24	18	95060	95045	97060	97045	96160	96145
Suzuki	Forenza	2004-2008	22	19	95055	95048	97055	97048	96155	96148
Suzuki	Grand Vitara	2006-2013	19	19	95048	95048	97048	97048	96148	96148
Suzuki	Kizashi	2010-2013	24	20	95060	95050	97060	97050	96160	96150
Suzuki	Reno	2005-2008	22	19	95055	95048	97055	97048	96155	96148
Suzuki	Sx 4	2007-2013	26	14	95065	95035	97065	-	96165	96135
Suzuki	Verona	2004-2005	22	20	95055	95050	97055	97050	96155	96150
Suzuki	Vitara, Grand Vitara	1999-2005	19	19	95048	95048	97048	97048	96148	96148
Suzuki	XI-7	2007-2009	24	19	95060	95048	97060	97048	96160	96148
Suzuki	XI-7	2001-2006	19	19	95048	95048	97048	97048	96148	96148
Tesla	Model S	2012-2013	26	17	-	-	97065	97043	-	-
Toyota	4-Runner	2010-2014	24	20	95060	95050	97060	97050	96160	96150
Toyota	4-Runner	2003-2009	22	20	95055	95050	97055	97050	96155	96150
Toyota	Avalon	2013-2015	26	18	95065	95045	97065	97045	96165	96145
Toyota	Avalon	2005-2012	26	20	-	-	97065	97050	-	-
Toyota	Camry	2012 (late)- 2015	26	18	95065	95045	97065	97045	96165	96145
Toyota	Camry	2007-2012 (early)	24	20	95060	95050	97060	97050	96160	96150
Toyota	Camry	2002-2006	24	19	95060	95048	97060	97048	96160	96148
Toyota	Celica	2000-2005	26	17	95065	95043	97065	97043	96165	96143
Toyota	Corolla	2009-2015	26	16	95065	95040	97065	97040	96165	96140
Toyota	Corolla	2003-2008	24	18	95060	95045	97060	97045	96160	96145
Toyota	Echo	2000-2008	22	14	95055	95035	97055	-	96155	96135
Toyota	Fj Cruiser	2007-2014	16	14(2)	95040	95035	97040	-	96140	96135
Toyota	Highlander	2008-2015	26	20	95065	95050	97065	97050	96165	96150
Toyota	Highlander	2001-2007	22	19	95055	95048	97055	97048	96155	96148
Toyota	Landcruiser	2008-2015	24	22	95060	95055	97060	97055	96160	96155
Toyota	Landcruiser	2004-2007	24	22	95060	95055	97060	97055	96160	96155
Toyota	Matrix	2009-2013	26	16	95065	95040	97065	97040	96165	96140
Toyota	Matrix	2003-2008	21	18	95053	95045	97053	97045	96153	96145
Toyota	Mr 2	2000-2005	20	19	95050	95048	97050	97048	96150	96148
Toyota	Prius (All)	2004-2009	26	18	95065	95045	97065	97045	96165	96145
Toyota	Prius	2010-2015	26	19	95065	95048	97065	97048	96165	96148
Toyota	Prius-V	2012-2014	26	19	95065	95048	97065	97048	96165	96148
Toyota	Prius-C	2012-2014	28	14	-	95035	-	-	96170	96135
Toyota	Rav 4	2013-2015	26	16	95065	95040	97065	97040	96165	96140



Make	Model	Year	Driver	Pass.	Super Driver	Silicone Pass.	Si - Tech Driver	Pass.	Aero Driver	Vogue Pass.
Toyota	Rav 4	2006-2012	24	16	95060	95040	97060	97040	96160	96140
Toyota	Rav 4	2001-2005	22	19	95055	95048	97055	97048	96155	96148
Toyota	Sequoia	2008-2015	26	23	-	-	97065	97055	-	-
Toyota	Sequoia	2001-2007	19	19	95048	95048	97048	97048	96148	96148
Toyota	Sienna	2013-2015	28	20	-	95050	-	97050	96170	96150
Toyota	Sienna	2010-2012	28	20	-	95050	-	97050	96170	96150
Toyota	Sienna	2005-2009	26	19	95065	95048	97065	97048	96165	96148
Toyota	Solara	2004-2008	24	19	95060	95048	97060	97048	96160	96148
Toyota	Tacoma	2005-2015	22	21	95055	95053	97055	97053	96155	96153
Toyota	Tundra	2014-2015	26	23	-	-	97065	97055	-	-
Toyota	Tundra	2007-2013	24	22	-	-	97060	97055	-	-
Toyota	Tundra	2000-2006	19	19	95048	95048	97048	97048	96148	96148
Toyota	Venza	2009-2015	26	22	95065	95055	97065	97055	96165	96155
Toyota	Yaris	2007-2011	26	14	95065	95035	97065	-	96165	96135
Toyota	Yaris Sedan	2012-2015	26	14	95065	95035	97065	-	96165	96135
Volkswagen	Beetle	2012-2015	22	22	-	-	97055	97055	-	-
Volkswagen	Beetle	1998-2010	21	21	95053	95053	97053	97053	-	-
Volkswagen	Cc	2013-2015	24	19	-	-	97060	97048	-	-
Volkswagen	Cc	2009-2012	24	19	-	-	97060	97048	-	-
Volkswagen	Eos	2007-2015	24	19	-	-	97060	97048	-	-
Volkswagen	Golf / Gti	2015-2015	26	18	-	-	97065	97045	-	-
Volkswagen	Golf / Gti	2010-2014	24	19	-	-	97060	97048	-	-
Volkswagen	Golf / Gti	1997-2006	21	19	95053	95048	97053	97048	-	-
Volkswagen	Jetta Sportwagon	2011-2014	24	19	-	-	97060	97048	-	-
Volkswagen	Jetta / Gli	2011-2015	24	19	-	-	97060	97048	-	-
Volkswagen	Jetta (Late 2006)	2006-2010	24	19	-	-	97060	97048	-	-
Volkswagen	Jetta (Late 2005)	2005-2006	24	19	-	-	97060	97048	-	-
Volkswagen	Jetta (Early 2005)	1993-2005	21	19	95053	95048	97053	97048	-	-
Volkswagen	Passat	2011-2015	24	19	-	-	97060	97048	-	-
Volkswagen	Passat	2005 (late)-2010	24	19	-	-	97060	97048	-	-
Volkswagen	Passat	2002 (late)-2005 (early)	21	21	-	-	97053	97053	-	-
Volkswagen	Passat	1991-2002 (early)	21	21	95053	95053	97053	97053	-	-
Volkswagen	Phaeton	2004-2006	24	21	-	-	97060	97053	-	-
Volkswagen	R 32	2008-2009	24	19	-	-	97060	97048	-	-
Volkswagen	Rabbit / Gti	2006-2009	24	19	-	-	97060	97048	-	-
Volkswagen	Routan	2009-2013	26	20	95065	95050	97065	97050	96165	96150
Volkswagen	Tiguan	2009-2015	24	21	-	-	97060	97053	-	-
Volkswagen	Touareg	2011-2015	25	25	-	-	97060	97060	-	-
Volkswagen	Touareg	2008-2010	25	25	-	-	97060	97060	-	-
Volkswagen	Touareg	2004-2007	26	26	-	-	97065	97065	-	-
Volvo	C 30	2008-2013	26	20	-	-	97065	97050	-	-
Volvo	C 70	2007-2013	26	19	-	-	97065	97048	-	-
Volvo	C 70	1997-2005	21	20	95053	95050	97053	97050	-	-
Volvo	S 40	2005-2011	26	20	-	-	97065	97050	-	-
Volvo	S 60	2012-2015	26	20	-	-	97065	97050	-	-
Volvo	S 60	2005-2009	24	21	-	-	97060	97053	-	-

Make	Model	Year	Driver	Pass.	Super Silicone Driver	Super Silicone Pass.	Si - Tech Driver	Si - Tech Pass.	Aero Vogue Driver	Aero Vogue Pass.
Volvo	S 80	2005-2015	25	19	-	-	97060	97048	-	-
Volvo	V 50	2005-2011	26	20	-	-	97065	97050	-	-
Volvo	V 60	2015-2015	26	20	-	-	97065	97050	-	-
Volvo	V 70 - Wagon	2008-2010	26	19	-	-	97065	97048	-	-
Volvo	V 70 - Wagon	2005-2007	24	21	-	-	97060	97053	-	-
Volvo	Xc 60	2013-2015	26	20	-	-	97065	97050	-	-
Volvo	Xc 60	2010-2012	26	20	-	-	97065	97050	-	-
Volvo	Xc 70	2008-2015	26	20	-	-	97065	97050	-	-
Volvo	Xc 70	2005-2007	26	21	-	-	97065	97053	-	-
Volvo	Xc 90	2011-2014	24	21	-	-	97060	97053	-	-
Volvo	Xc 90	2007-2010	24	21	-	-	97060	97053	-	-
Volvo	Xc 90	2005-2006	24	21	-	-	97060	97053	-	-

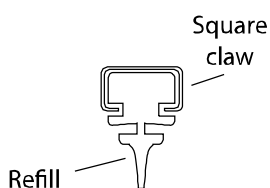
## WIPER QUICK REFERENCE GUIDE

Length	Length	Si-Tech	Aero Vogue	Super Silicone	Silicone Refill
12	300mm	-	96130	95030	94030
13	330mm	-	-	95033	94033
14	350mm	-	96135	95035	94035
15	380mm	-	96138	95038	94038
16	400mm	97040	96140	95040	94040
17	430mm	97043	96143	95043	94043
18	450mm	97045	96145	95045	94045
19	475mm	97048	96140	95040	94048
20	500mm	97050	96150	95050	94050
21	525mm	97053	96153	95053	94053
22	550mm	97055	96155	95055	94055
24	600mm	97060	96160	95060	94060
26	650mm	97065	96165	95065	94065
28	700mm	-	96170	-	94070

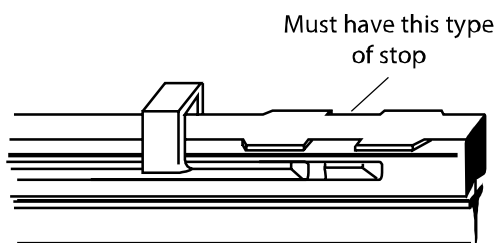
## SILICONE WIPER REFILLS

Our wiper refills will also fit some OE and other manufacturers wiper blades provided the blades have a square type claw and stop as shown below.

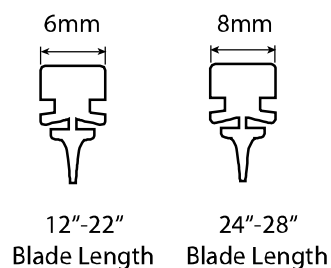
### SQUARE CLAW



### BLADE STOP



### CLAW WIDTH





## GENERAL INSTALLATION INSTRUCTIONS

## PREPARATION

1. Park vehicle in a safe location, turn off engine and set parking brake.
2. Remove old wiper blades.

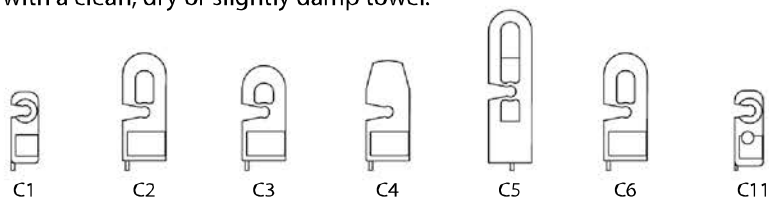
**CAUTION**

WIPER BLADE ARMS ARE SPRING LOADED, MAKE SURE THEY DO NOT IMPACT THE WINDSHIELD, THIS MAY CAUSE DAMAGE.

3. Wash windshield thoroughly with soap and water or a glass cleaner.
4. Apply the windshield treatment solution. Remove the windshield treatment towel from its packet. Wipe the entire windshield with windshield treatment towel. Let the windshield treatment solution dry on the windshield for 10 minutes, then wipe windshield with a clean, dry or slightly damp towel.

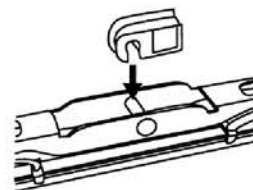
## INSTALLATION

## Adapters



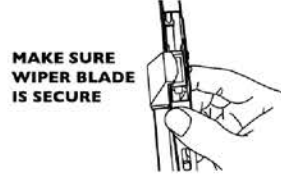
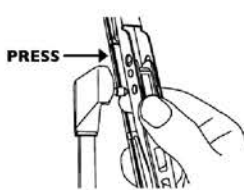
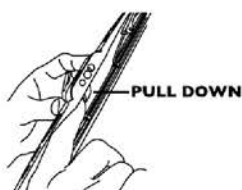
## HOOK STYLE WIPER ARMS

1. Choose the correct wiper blade adapter from the adapter pack (see application guide).
2. Test fit the adapter into the wiper arm to check fit. The correct adapter will “snap” into place.
3. Once proper adapter is identified, press the adapter into the PIAA wiper blade. The adapter will “snap” into place on the pin in the center of the primary stay.
4. Install PIAA wiper blade onto wiper arm.



## 3/16" SIDE-LOCK, PIN-STYLE WIPER ARMS

1. For 3/16" side lock pin style wiper systems. Adapter C11 only.



## 3/16" AND 1/4" SIDE-LOCK, PIN-STYLE WIPER ARMS

1. For 3/16" and 1/4" side-lock, pin-style wiper systems. Adapter C15 only.
2. Insert wiper arm pin through the correct sized hole in the wiper frame.
3. With wiper arm pin inserted all the way through the frame, snap adapter C15 over center pin and wiper arm pin. Notice that adapter C15 has a larger and smaller receptacle side. Match the larger and smaller sides of the adapter with the larger and smaller holes in the frame.
4. Make sure adapter C15 “snaps” into place and that the wiper blade is securely fastened to the wiper arm. Also make sure the wiper blade is free to swivel on the wiper arm pin.

Adapter C15 may not work with some 3/16" wiper arms. If so, use adapter C11.

# LED WORKING DISPLAYS



\* Works on slat wall and peg hooks

## 3 LIGHT WORKING DISPLAY

Part#	Description
30053	Display with 3 LED lights with power source.



## 2 LIGHT WORKING DISPLAY

Part#	Description
30904	Display with 2 LED lights with power source.

## LP SERIES WORKING DISPLAYS



## LP SERIES LED WORKING DISPLAYS

Part#	Description
30909	One PIAA LP530 LED Working Display.
30955	One PIAA LP550 LED Working Display.
30956	One PIAA LP560 LED Working Display
30912	One PIAA LP570 LED Working Display.

## RF SERIES WORKING DISPLAYS



## RF SERIES LED WORKING DISPLAYS

Part#	Description
30973	One PIAA RF3 Driving LED Working Display
30976	One PIAA RF6 Driving LED Working Display
30977	One PIAA RF10 Driving LED Working Display
30978	One PIAA RF6 Ion Fog LED Working Display
30979	One PIAA RF10 Ion Fog LED Working Display

\* CALL FOR DETAILS AND PRICING ON WORKING DISPLAY AND PROMOTIONAL ITEMS



## XW SWIVEL DISPLAY



### XTREME WHITE BULB DISPLAY

Part#	Description
30907	Comes With Assortment Of 12 Xtreme White Bulbs

## NT SWIVEL DISPLAY



### NIGHT TECH BULB DISPLAY

Part#	Description
30918	Come With Assortment Of 12 Night Tech Bulbs

## WIPER DISPLAYS



### STANDING DISPLAYS

Part#	Description
93944	Aero Vogue Standing Display, With 30 Wiper Blades
93940	Si-Tech Standing Display, With 30 Wiper Blades
93943	Super Silicone Standing Display, With 30 Wiper Blades



### SLAT WALL DISPLAYS

Part#	Description
93946	Aero Vogue Slat Wall Display, With 15 Wiper Blades
93945	Si-Tech Slat Wall Display, With 15 Wiper Blades
93942	Super Slat Wall Display, With 15 Wiper Blades

## BRANDING

### PIAA BANNER



### PIAA BLACK BANNER

Part#  
90161

### LICENSE PLATES



### PIAA LICENSE PLATE

Part#  
LP-BLACK

\* CALL FOR DETAILS AND PRICING ON WORKING DISPLAY AND PROMOTIONAL ITEMS

**FLEXFIT HAT**



**PIAA FLEXFIT HAT**

Part#

AP-FF6511BW-LXL

**PIAA T-SHIRT**



**PIAA T-SHIRT**

Part#

Size

AP-TSMB

Medium

AP-TSLB

Large

AP-TSXLB

XL

AP-TSXXLB

XXL

**CAN KOOZIE**



**PIAA CAN KOOZIE**

Part#

AP-BK-BL

**ALUMINUM WATER BOTTLE**



**PIAA WATER BOTTLE**

Part#

H2O-BLACK

\* CALL FOR DETAILS AND PRICING ON WORKING DISPLAY AND PROMOTIONAL ITEMS

## CARE & MAINTENANCE

Proper care & maintenance begins with proper installation. When installing your PIAA lamps make sure to read and follow the instruction manual carefully. Common mistakes include mounting the lamp upside down, improper wiring and failure to properly aim the lamps.

Please pay special attention to the orientation of the vent; mounting the lamps upside down may cause the lamp to fill with water resulting in premature failure.

When wiring your lamp kit make sure that all connections are clean and tight. A loose or dirty connection will affect the performance of the lighting system. All wiring, fuse boxes and relays must be secured in a dry location away from hot items and secured away from moving parts.

Improperly aimed lamps create an unsafe driving situation. Please refer to the light aiming instructions below.

Cleaning is inspecting. The best time to inspect your lamps is when you wash your vehicle. To ensure your safety and maintain optimal lamp performance, your lamps should be inspected to ensure they are properly aimed and in good working order.

Your safety and the safety of those around you is our primary concern. Proper care and maintenance of your PIAA lamps will result in a lifetime of safe and carefree driving.

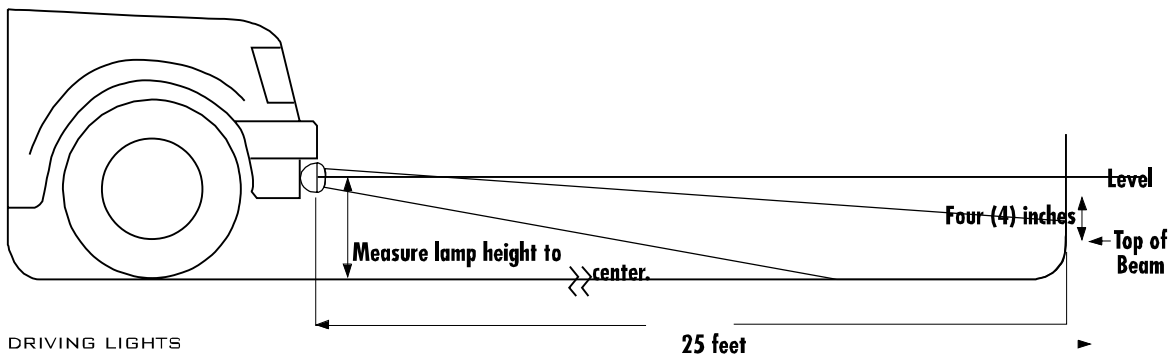
## LIGHT AIMING GUIDE



Proper auxiliary lamp aiming is the most important part of an installation. If the lamps are not properly aimed they will not achieve optimum performance and they can be very dangerous. The danger comes from the beam pattern being aimed right into oncoming vehicles thus blinding the driver.

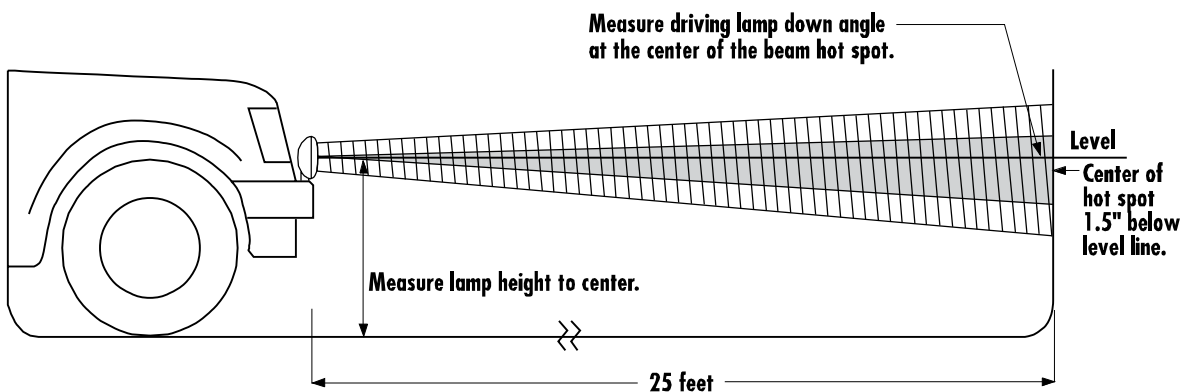
## FOG & FOUL WEATHER LIGHTS

Traditional fog lights are usually mounted under the front bumper about 10-24 inches from the ground. There are two important issues to address when installing fog lights, the first is to minimize the amount of return glare into the driver's eyes, and the other is to minimize glare into oncoming driver's eyes. Both must be accomplished while putting as much light as possible on the road. These fog/foul weather light aiming instructions are suggestions taken from common practice and the S.A.E. standard J583. Some modifications to these instructions may be necessary to minimize glare. Visual aim is made with the top of the beam 4 inches below the lamp center at 25 feet with the lamp facing straight forward. (See below.)



## DRIVING LIGHTS

Typically, driving lights are mounted above the front bumper about 14-30 inches from the ground to provide extra high beam illumination. Driving lights can be mounted below the bumper, although they will not be as effective because the light will hit the ground sooner and reduce the range of the light. Visual aim is made with the center of the beam hot spot 1.5 inches below the lamp center at 25 feet with the lamp facing straight forward. (See below.)



## PIAA CORPORATION USA, LIMITED PRODUCT WARRANTY

PIAA Corporation warrants our lamp kits (except bulbs) to be free from defects in workmanship and materials under normal use for as long as the original purchaser owns them. PIAA warrants all HALOGEN BULBS for a period of 1 year, all LED bulbs for a period of 2 years, and all H.I.D. bulbs and ballasts for a period of 2 years from the date of purchase.

## EXCLUSIONS

This Limited Warranty specifically excludes defects resulting from misuse, abuse, neglect, alteration, modification, improper installation, unauthorized repairs, submersion, theft, vehicle crash or any other type of impact. Except for the Limited Warranty stated above, there are no warranties of PIAA products or any part thereof, whether express or implied. Any implied warranty of merchantability or any warranty of fitness for a particular purpose is expressly disclaimed. Some states do not permit the disclaimer of implied warranties.

## EXCLUSION OF DAMAGES

In no event shall PIAA be liable for any damages whatsoever (including, without limitation, consequential damages, incidental damages, or damages for loss of use, loss of business profits, business interruption, loss of business information, loss of time, inconvenience, or other losses) arising out of the use, misuse, or inability to use a PIAA product. PIAA reserves the right to change the design its products without any obligation to modify any previous product. This warranty gives you specific legal rights. You may also have other rights that vary by state.

## REPAIR OR REPLACEMENT

If a PIAA product is suspected of being defective, it must be submitted freight prepaid to either an authorized dealer, distributor, or PIAA Headquarters for warranty inspection. The receipt or other proof of purchase and a description of the problem must be included. The returned product will be inspected. If the product is found to be defective and covered by this Limited Warranty, the sole remedy is repair or replacement at PIAA's option. A repaired or replacement product will be shipped back at no charge and will be warranted to be free from defects in workmanship and materials under normal use for as long as the original purchaser owns it. Removal, installation, or reinstallation costs are not covered by this Limited Warranty.

## PIAA WIPER WARRANTY

## 100% SATISFACTION GUARANTEED!

PIAA Corporation U.S.A., ("PIAA") warrants the Super Silicone Wiper Blades to be free from defects in workmanship and materials under normal use for one year from the date of purchase.

## EXCLUSIONS

This Limited Warranty specifically excludes damage resulting from "acts of nature", misuse, abuse, neglect, alteration, modification, improper installation. The silicone rubber is considered a consumable and is therefore excluded from the provision of the Limited Warranty. Except for the Limited Warranty stated above, there are no warranties of PIAA

products or any part thereof, whether expressed or implied. Any implied warranty of merchantability or any warranty of fitness for a particular purpose is expressly disclaimed. Some states do not permit the disclaimer of implied warranties.

## REPAIR AND REPLACEMENT

If a PIAA Super Silicone Wiper Blade is suspected of being defective, it must be returned to an authorized PIAA dealer for warranty inspection. Removal, installation, or re-installation costs are not covered by this Limited Warranty.

## WARRANTY / RETURN QUESTIONS

PIAA is committed to providing outstanding customer service. We will gladly refund your purchase price or replace any defective item and most non-defective items. Within 30 days of receipt of your order, you may return products that:

- Have not been used
- Are in their original packaging and properly packaged to avoid damage
- Include all parts, hardware or instructions
- Are not custom or special orders

The return is accompanied by the Return Authorization # we issue on an approved return. For items meeting these criteria, we will refund the purchase price of the returned items minus the outbound freight, plus a restocking fee of 15%. We reserve the right to waive the restocking fee at our discretion.

# PIAA

LIGHTS | BULBS | WIPERS

---

