

Journey to the standard product

TOSHIBA INFRARED Halogen heater lamp

Super Slim Ruby

Features

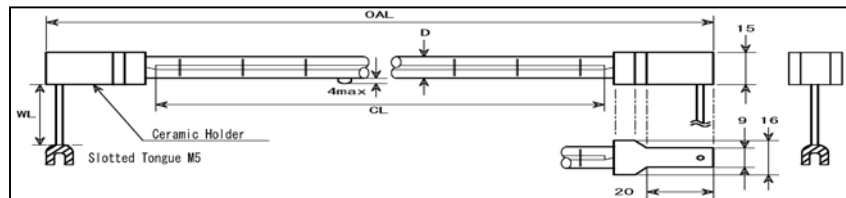
- Beautiful ruby light thanks to the natural coloured quartz glass.
- Enhanced anti-dazzling effect with high quality quartz tube material.
- Natural colour glass – No more miserable coating flaking off until the end of life.
- Longer heater size is available compared with coated types.
- Instant start and instant stop to achieve the best comfortable heated zone.
- Pinpoint heating : Heat only where needed, when needed
- Visually warm impression
- Clean, safe and energy saving heat source
- Slim Tubes : Tube Diameter = 11 mm Max

Applications

- Zone heating for both outdoor and indoor usage
- Body care applications that require clean, infection free indirect heating
- Paint dryer and industry process that require non-dazzling infrared heat source
- Breeding animals (pigs, chickens, horses, cattle, etc...)

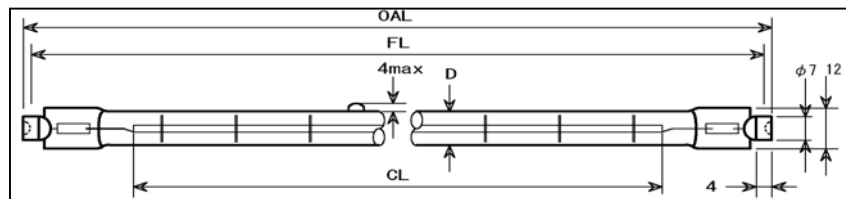


Bs base



Part Number	Glass	V	W	OAL	FL	CL	Burning Position	Life
				mm	mm	mm		
JHR 235V 500W 165BsH	Φ 10mm Ruby	220 - 250	500	224	-	165	Horizontal	5000
JHR 235V 500W 280BsH	Φ 10mm Ruby	220 - 250	500	352	-	280	Horizontal	5000
JHR 120V 1000W 280BsH	Φ 10mm Ruby	120	1000	352	-	280	Horizontal	5000
JHR 235V 1000W 280BsH	Φ 10mm Ruby	220 - 250	1000	352	-	280	Horizontal	5000
JHR 235V 1000W 280BsU	Φ 10mm Ruby	220 - 250	1000	352	-	280	Universal	5000
JHR 120V 1500W 280BsH	Φ 10mm Ruby	120	1500	352	-	280	Horizontal	5000
JHR 235V 1500W 280BsH	Φ 10mm Ruby	220 - 250	1500	352	-	280	Horizontal	5000
JHR 235V 1500W 280BsU	Φ 10mm Ruby	220 - 250	1500	352	-	280	Universal	5000
JHR 235V 2000W 280BsH	Φ 10mm Ruby	220 - 250	2000	352	-	280	Horizontal	5000
JHR 235V 2000W 280BsU	Φ 10mm Ruby	220 - 250	2000	352	-	280	Universal	5000

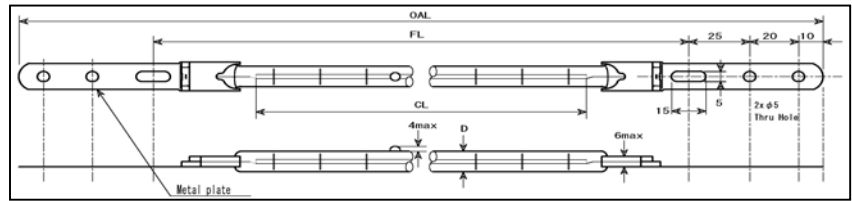
R7s base



Part Number	Glass	V	W	OAL	FL	CL	Burning Position	Life
				mm	mm	mm		
JHR 235V 1000W 260RU	Φ 10mm Ruby	235	1000	330	327,5	260	Universal	5000
JHR 235V 1000W 260RH	Φ 10mm Ruby	235	1000	330	327,5	260	Horizontal	5000
JHR 235V 1300W 205RU	Φ 10mm Ruby	235	1300	257	254	205	Universal	5000
JHR 235V 1300W 205RH	Φ 10mm Ruby	235	1300	257	254	205	Horizontal	5000

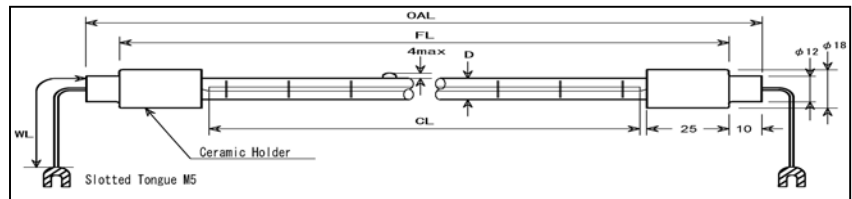
Request freely other specifications including customer specific designs.

J base



Part Number	Glass	V	W	OAL	FL	CL	Burning Position	Life
				mm	mm	mm		
JHR 235V 1000W 280JU	Φ 10mm Ruby	220 - 250	1000	N/A	370	280	Universal	5000
JHR 235V 1000W 280JH	Φ 10mm Ruby	220 - 250	1000	N/A	370	280	Horizontal	5000
JHR 235V 2000W 280JU	Φ 10mm Ruby	220 - 250	2000	N/A	370	280	Universal	5000
JHR 235V 2000W 280JH	Φ 10mm Ruby	220 - 250	2000	N/A	370	280	Horizontal	5000
JHR 400V 2000W 410JU	Φ 10mm Ruby	380 - 420	2000	N/A	508	410	Universal	5000
JHR 400V 2000W 410JH	Φ 10mm Ruby	380 - 420	2000	N/A	508	410	Horizontal	5000
JHR 400V 3000W 700JU	Φ 10mm Ruby	380 - 420	3000	N/A	798	700	Universal	5000
JHR 400V 3000W 700JH	Φ 10mm Ruby	380 - 420	3000	N/A	798	700	Horizontal	5000

Gw base



Part Number	Glass	V	W	OAL	FL	CL	Burning Position	Life
				mm	mm	mm		
JHR 235V 1000W 265GwH	Φ 10mm Ruby	220 - 250	1000	340	320	265	Horizontal	5000
JHR 235V 1000W 280GwU	Φ 10mm Ruby	220 - 250	1000	364	344	280	Universal	5000
JHR 235V 1500W 265GwU	Φ 10mm Ruby	220 - 250	1500	340	320	265	Universal	5000
				364	344	280	Horizontal	5000
				523	482	410	Universal	5000
				813	772	700	Universal	5000



Super Slim Ruby



Request freely other specifications including customer specific designs.

TOSHIBA INFRARED Halogen heater lamp

*Jacketed
Jacketed*

Features

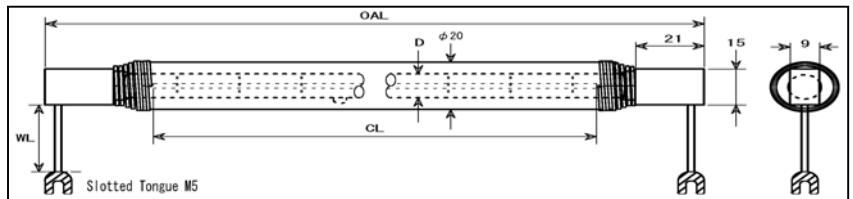
- Absolute protection by double tube structure.
Prevent contamination (over food, for example) by accidental heater break
Avoid chemical attacks over heater tubes to keep good performance.
Protection of the heater tube from unexpected thermal shock such as by splashed water.
- Instant start and instant stop to control heat
- Various jacket selections to realise the best visual impression.
Clear, Neutral and Ruby quartz sleeve
- Tube Diameter = 20 mm

Applications

- Food warming
- Food displays
- Zone Heating
- And other various applications



B base



Part Number	Glass	V	W	OAL	FL	CL	Burning Position	Life
				mm	mm	mm		h
JHD 240V 300W 160BH	Clear	220 - 250	300	217	-	160	Horizontal	5000
JHD 240V 500W 160BH	Clear	220 - 250	500	217	-	160	Horizontal	5000
JHD 235V 1000W 272BH	Clear (lamp is JHC)	220 - 250	1000	354	-	272	Horizontal	5000
JHD 240V 1000W 270BH	Clear	220 - 250	1000	346	-	270	Horizontal	5000
JHD 240V 1000W 270BrH	Ruby	220 - 250	1000	346	-	270	Horizontal	5000
JHD 240V 1500W 270BrH	Ruby	220 - 250	1500	346	-	270	Horizontal	5000
JHD 240V 2000W 270BrH	Ruby	220 - 250	1500	346	-	270	Horizontal	5000

Request freely other specifications including customer specific designs.

TOSHIBA INFRARED Halogen heater lamp

Golden Heat

Features

- Luxury golden heat light and twinkle of candle colour image while switched on
- Diamond black colour image while switched off
- Enhanced anti-dazzling effect with high quality quartz tube material
- Absolute protection jacketed by Neutral-Density quartz outer-sleeve
- Pinpoint heating : Heat only where needed, when needed
- Instant start and instant stop to control heat
- Tube Diameter = 20 mm

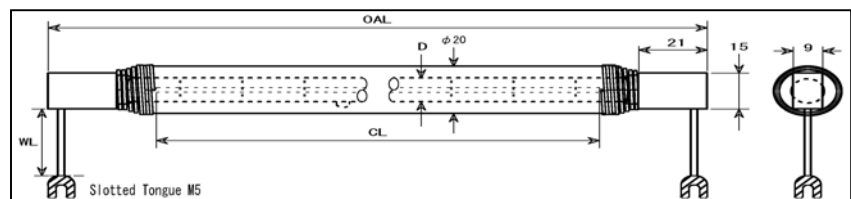


Applications

- Zone Heating especially for religious buildings
- Zone Heating for both outdoor and indoor usage
- And other various heating applications



B base



Request freely other specifications including customer specific designs.

TOSHIBA INFRARED Halogen heater lamp

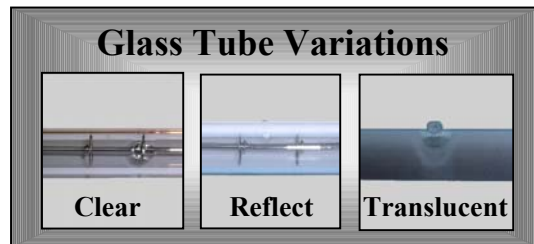
*High-Grade Heat source
for Industry*

Features

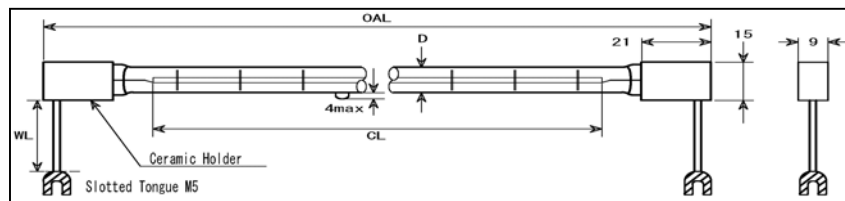
- Supply voltage from 100Vac to 400Vac
- Various tube types are available to obtain the best visual impression :
Clear tube, Translucent tube, and coated reflector type
- Various base types including customer specific request
- High quality by application oriented design and material / process control.

Applications

- Moisture control in paper production process
- Paint curing in automotive production / garage
- Plastics thermoforming in moulding process
- Food warmer
- Semiconductor manufacturing process
- Drying, curing, pre-heating in various kinds of industry process



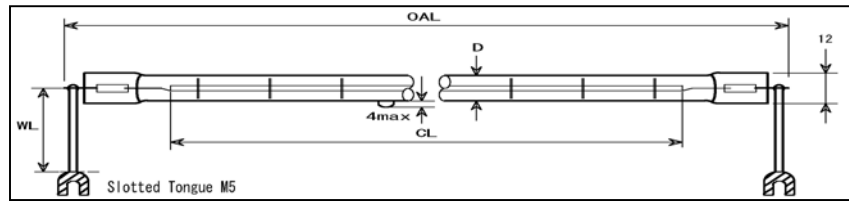
B base



Part Number	Glass	V	W	OAL	FL	CL	Burning Position	Life h
				mm	mm	mm		
JHT 110V 500W 142BH	Translucent	110	500	223	-	142	Horizontal	5000
JHS 235V 500W 165BH	Clear	220 - 250	500	224	-	165	Horizontal	5000
JHC 235V 500W 165BH	Coated Reflector	220 - 250	500	224	-	165	Horizontal	5000
JHS 235V 1000W 272BH	Clear	220 - 250	1000	352	-	272	Horizontal	5000
JHS 235V 1000W 272BU	Clear	220 - 250	1000	352	-	272	Universal	5000
JHC 235V 1000W 272BH	Coated Reflector	220 - 250	1000	352	-	272	Horizontal	5000
JHC 235V 1000W 272BU	Coated Reflector	220 - 250	1000	352	-	272	Universal	5000
JHS 240V 1200W 406BH	Clear	220 - 250	1200	503	-	406	Horizontal	5000
JHS 235V 2000W 280BH	Clear	220 - 250	2000	352	-	280	Horizontal	5000
JHS 235V 2000W 280BU	Clear	220 - 250	2000	352	-	280	Universal	5000
JHC 235V 2000W 280BH	Coated Reflector	220 - 250	2000	352	-	280	Horizontal	5000
JHC 235V 2000W 280BU	Coated Reflector	220 - 250	2000	352	-	280	Universal	5000
JHC 400V 2000W 410BU	Coated Reflector	380 - 420	2000	490	-	410	Universal	5000
JHC 230V 2000W 500BH	Coated Reflector	220 - 250	2000	650	-	500	Horizontal	5000
JHC 235V 2500W 280BH	Coated Reflector	220 - 250	2500	353	-	280	Horizontal	5000
JHC 235V 3000W 280BH	Coated Reflector	220 - 250	3000	357	-	280	Horizontal	5000
JHC 230V 3000W 700BH	Coated Reflector	220 - 250	3000	782	-	700	Horizontal	5000
JHS 400V 3000W 700BH	Clear	380 - 420	3000	780	-	700	Horizontal	5000

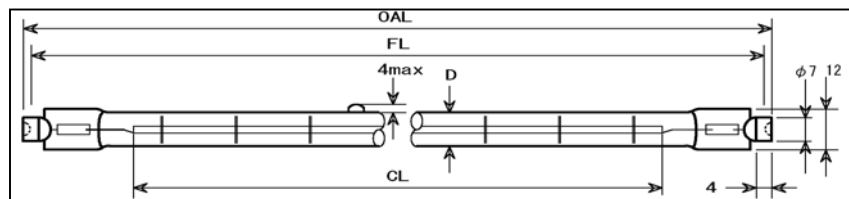
Request freely other specifications including customer specific designs.

T base



Part Number	Glass	V	W	OAL	FL	CL	Burning Position	Life
				mm	mm	mm		
JHS 240V 1000W 254TH	Clear	220 - 250	1000	254	-	254	Horizontal	5000
JHS 144V 1200W 150TH	Clear	144	1200	224	-	150	Horizontal	5000
JHC 144V 1200W 150TH	Coated Reflector	144	1200	224	-	150	Horizontal	5000
JHS 240V 1600W 406TH	Clear	220 - 250	1600	501	-	406	Horizontal	5000
JHT 240V 1600W 406TH	Translucent	220 - 250	1600	501	-	406	Horizontal	5000
JHS 240V 2000W 254TU	Clear	220 - 250	2000	318	-	254	Universal	5000
JHS 235V 2000W 280TU	Clear	220 - 250	2000	350	-	280	Universal	5000
JHS 235V 2500W 280TU	Clear	220 - 250	2500	350	-	280	Universal	5000
JHS 480V 2500W 635TH	Clear	480	2500	731	-	635	Horizontal	5000
JHS 235V 3000W 280TU	φ 12mm Clear	220 - 250	3000	350	-	280	Universal	5000
JHS 400V 3000W 280TU	Clear	380 - 420	3000	350	-	280	Universal	5000
JHS 575V 3800W 965TU	Clear	575	3800	1062	-	965	Universal	5000

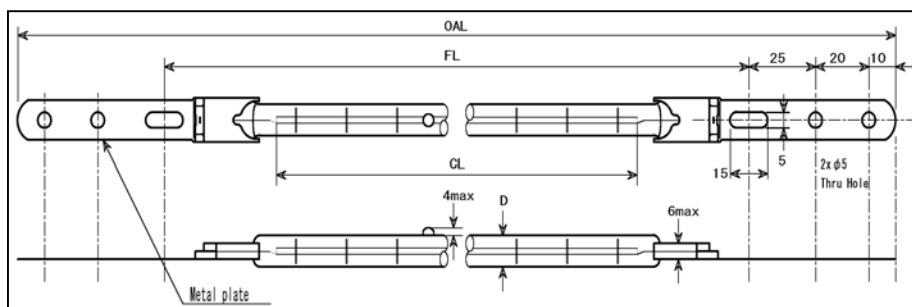
R7s base



Part Number	Glass	V	W	OAL	FL	CL	Burning Position	Life
				mm	mm	mm		
JHS 120V 500W 142RH	Clear	120	500	216	213	142	Horizontal	5000
JHT 120V 500W 142RH	Translucent	120	500	216	213	142	Horizontal	5000
JHS 235V 500W 165RH	Clear	220 - 250	500	220	217	165	Horizontal	5000
JHS 235V 1000W 260RH	Clear	220 - 250	1000	330	327,5	260	Horizontal	5000
JHS 235V 1000W 260RU	Clear	220 - 250	1000	330	327,5	260	Universal	5000
JHS 240V 1000W 270RH	Clear	220 - 250	1000	342	340	270	Horizontal	5000

Request freely other specifications including customer specific designs.

J base



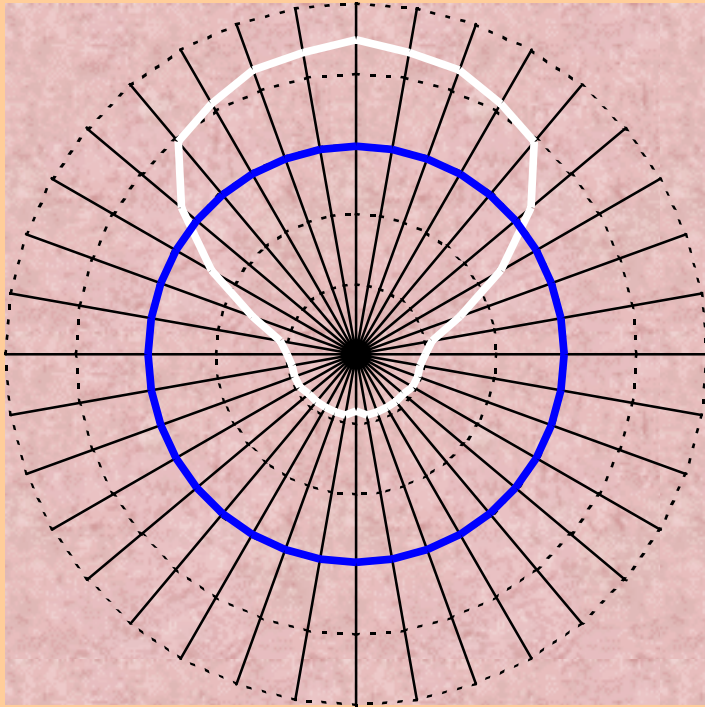
Part Number	Glass	V	W	OAL	FL	CL	Burning Position	Life
				mm	mm	mm		
JHS 120V 500W 142 JH	Clear	120	500	-	241	142	Horizontal	5000
JHC 120V 500W 142JH	Coated Reflector	120	500	-	241	142	Horizontal	5000
JHS 235V 1000W 272JH	Clear	220 - 250	1000	-	370	272	Horizontal	5000
JHS 235V 1000W 272JU	Clear	220 - 250	1000	-	370	272	Universal	5000
JHC 235V 1000W 272JH	Coated Reflector	220 - 250	1000	-	370	272	Horizontal	5000
JHC 235V 1000W 272JU	Coated Reflector	220 - 250	1000	-	370	272	Universal	5000
JHS 235V 2000W 280JH	Clear	220 - 250	2000	-	370	280	Horizontal	5000
JHS 235V 2000W 280JU	Clear	220 - 250	2000	-	370	280	Universal	5000
JHC 235V 2000W 280JH	Coated Reflector	220 - 250	2000	-	370	280	Horizontal	5000
JHC 235V 2000W 280JU	Coated Reflector	220 - 250	2000	-	370	280	Universal	5000
JHS 400V 2000W 280JU	Clear	380 - 420	2000	-	370	280	Universal	5000
JHS 400V 2000W 410JH	Clear	380 - 420	2000	-	508	410	Horizontal	5000
JHS 400V 2000W 410JU	Clear	380 - 420	2000	-	508	410	Universal	5000
JHC 400V 2000W 410JH	Coated Reflector	380 - 420	2000	-	508	410	Horizontal	5000
JHC 400V 2000W 410JU	Coated Reflector	380 - 420	2000	-	508	410	Universal	5000
JHS 235V 3000W 280JU	Φ 12mm Clear	220 - 250	3000	-	370	280	Universal	5000
JHS 400V 3000W 280JU	Clear	380 - 420	3000	-	370	280	Universal	5000
JHS 400V 3000W 410JU	Clear	380 - 420	3000	-	508	410	Universal	5000
JHS 400V 3000W 700JH	Clear	380 - 420	3000	-	798	700	Horizontal	5000
JHS 400V 3000W 700JU	Clear	380 - 420	3000	-	798	700	Universal	5000
JHC 400V 3000W 700JU	Coated Reflector	380 - 420	3000	-	798	700	Universal	5000

*High-Grade Heat source
for Industry*



Request freely other specifications including customer specific designs.

**Sectional light distribution of
Coated Reflector (JHC) heater lamp**



— JHC Coated Reflector type

— JHS No coated reflector