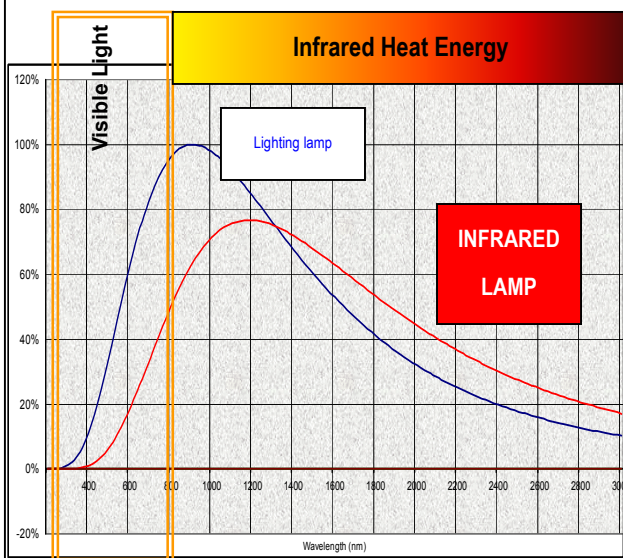


Jacketed Low Pressure Infrared Lamp



TOSHIBA Infrared Lamp heat efficiency (Fig.1)



TOSHIBA Jacketed Low Pressure infrared lamps are specially designed for food warming application. Fig.1 shows how **TOSHIBA** infrared lamps efficiently generate more Infrared Heat Energy but less visible light than classical lighting lamps. Those are not only Low Pressure infrared lamp, but also additionally jacketed by 20mm dia. clear quartz sleeve:

- For anti-scattering protection against quartz piece by accidental break of heater inside
- To avoid chemical attacks over heater tubes to maintain good performance
- To protect the infrared lamps from unexpected thermal shock such as splashed water or foods

The protection by clear quartz sleeve more securely ensures long life as well because of no direct contamination on infrared lamp inside from splashed sodium contained in foods. When such splashed sodium goes directly onto infrared lamp without protection being operated at high temperature, devitrification phenomenon is caused on quartz tube glass. Devitrification deteriorates not only quality of quartz over time, but also lifetime of infrared lamp itself.

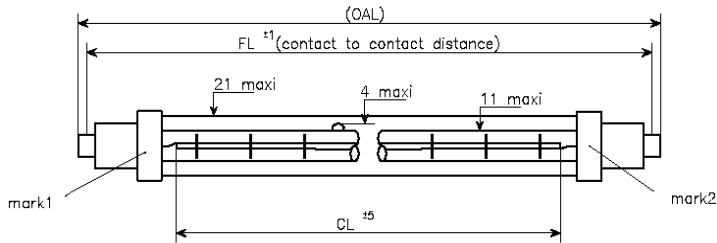
TOSHIBA Jacketed Low Pressure infrared lamps protected by clear quartz sleeve therefore bring benefits of;

- *More secured against accidental thermal shock
- *More durable against devitrification and mechanical shock
- Warming foods or objects and the air in between.
- Low maintenance and long life 5000h on average
- No warm-up time required, switched on-off within a second.
- Silent and odorless

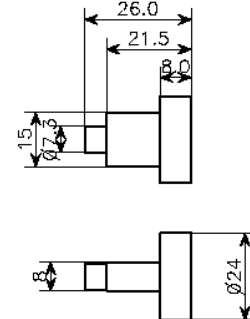
*Internal comparison with unjacketed IR lamp

TOSHIBA jacketed Low Pressure infrared lamps are therefore the best suited for both warming and displaying in catering service operation.

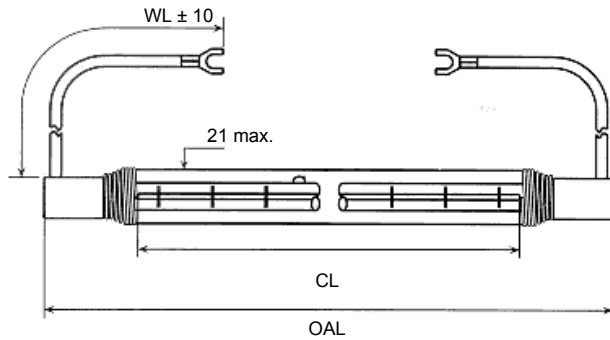
Type 1



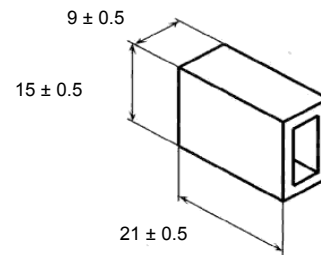
Base dimensions for Type 1 (R7s contact)



Type 2



Base dimensions for Type 2



Part list

Part code	Volts (V)	Watts (W)	Drawing	Wire length WL(mm)	Overall length OAL (mm)	Fixation length FL (mm)	Heating length CL (mm)	Burning position	Ave. Life
JHDS 230V 300W 60 VjH	230 - 240	300	TYPE 1	-	(118)	114.2 ± 1	60 ± 5	Horizontal	5000
JHDS 240V 300W 160 VjH	230 - 240	300	TYPE 1	-	(220)	216 ± 1	160 ± 5	Horizontal	5000
JHDS 240V 300W 160 BH	230 - 240	300	TYPE 2	200 ± 10	217 ± 2	-	160 ± 5	Horizontal	5000
JHDS 240V 500W 160 VjH	230 - 240	500	TYPE 1	-	(220)	216 ± 1	160 ± 5	Horizontal	5000
JHDS 240V 500W 160 BH	230 - 240	500	TYPE 2	200 ± 10	217 ± 2	-	160 ± 5	Horizontal	5000
JHDS 235V 1000W 272 VjH	230 - 240	1000	TYPE 1	-	(350)	346 ± 1.5	272 ± 5	Horizontal	5000
JHDS 235V 1000W 272 BH	230 - 240	1000	TYPE 2	200 ± 10	353 ± 2	-	272 ± 5	Horizontal	5000

TOSHIBA Lighting Products (France) S.A. Paris Sales & Marketing Office

Contents to change without notice

120, rue Jean-Jaures 92300 Levallois-Perret France

Phone + 33 (0) 1 70 98 77 29 Fax + 33 (0) 1 70 98 77 44

info@toshiba-lighting.com

www.toshiba-lightin.com