

wanscam®
New Vision, New Life

SOLAR
NETWORK
CAMERA

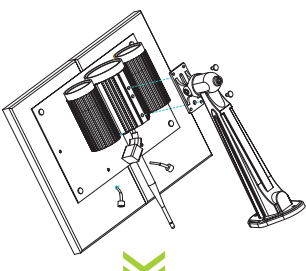
New Battery design, Low Energy Consumption

Installation
> Please read this manual completely
> Do not open the camera, only authorized dealers are allowed to do this
> Charge the battery 8 hours before installation
> Install the camera in outdoor environment with dear sight to sunshine
> Do not support SIM card hot-plugging in and hot swap when charging

Note: Installation with" " is special for 4G Version

Shenzhen Wanscam Technology Co., Ltd
ADD: 9th F., West 1, 2nd Building, the Ganghuang Industrial zone, No.4 Chongqing Road, Fuying Street, Baoan district, Shenzhen, China
TEL: +86-755-33582428
Website: www.wanscam.net www.wanscam.com

HW0029



Set up the fixed bracket: Please take out the camera and the bracket from the color box, and get the hexagon bolt from the bag of accessories, use a spanner to fix the bracket on the camera with the hexagon bolt exactly.

Combining the Solar Power Panel with the camera: Combine the cable of the power output of the Solar Power Panel with the cable of power input of the camera.

▲Attention: The arrow of the solar power panel power output should be in right direction with the arrow of the camera power input.

Indicator light:

- 1)When the indicator light blinking red, the storage of battery is about 30%.
- 2)When the indicator light blinking green and red, the storage of battery is about 50%.
- 3)When the indicator light blinking green, the storage of battery is 80%.
- 4)When the indicator light is always green, the storage of battery is 100%.

Turning on: When the camera is being charged by solar power panel or power adapter, the indicator light turns blue, the camera starts working, it takes 30 seconds to turn on the camera.
You Tube: <https://www.youtube.com/watch?v=548839k4tyg>
Turning off: While the camera is working, keep the power adapter in power jack and plug the power adapter pin in camera in and out for 3 times to turn off the camera, the indicator light turns off at the same time (Please repeat again if the indicator light not turn off)
You Tube: <https://www.youtube.com/watch?v=Zz4Wd6YBS0>

▲Please charge the camera with the power adaptor for more than 8 hours before using the camera.

APP Download

Please Download and install the APP before you set up the IP Camera. Search on Google Play store or APP Store for "Wanscam"



02
CONNECTION

01
INSTALLATION
INSTRUCTIONS

Three Connection Methods
AP Connection (Peer to Peer via WIFI)

> It will give out a WiFi AP signal when the camera is connected with power(Battery or DC)
Note: If network cable is connected, access point (AP) is not available

> Search and connect directly to the camera WiFi AP (Such as CAM0001) using your mobile or notebook, the default WiFi password: 123456789

> Then search the camera through APP or Search Tool (Search option).

Wired Network Connection

> Connect the camera to your router after being fully charged
> Then Search the camera through APP, Search Tool(Search option)

4G Connection

> Scan the QR code on the camera with APP or Input the P2P ID directly on PC Client to access the video.

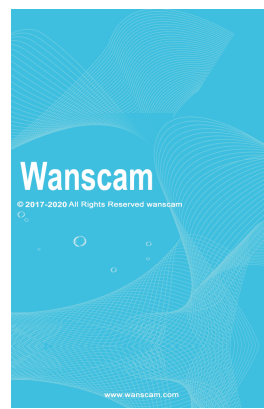
> Search the camera WiFi-SSID: Solar Cam-4GXX, Password: 123456789
Please change and remember the new password when firstly use Sign in and search the camera locally, the same installation as the 3-rd version
Note: when searched and found, this camera type, the ID start with digits ZZZZ Then connect to the camera

APP Installation

A: For Apple devices, please download "Wanscam" in APP Store and install it.
B: For Android devices, please download "Wanscam" in Google Play and install it.

Add devices on Wanscam

Run the "Wanscam". 3 methods to add the cameras as below:



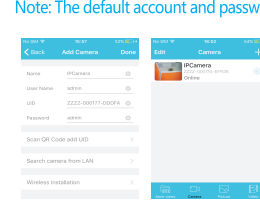
02
CONNECTION

03
MOBILE ACCESS

03
MOBILE ACCESS

Method 1
Input the P2P ID, User name, Password of your camera manually. Then click "Save".
Method 2
Scan the QR code Click the "Scan QR code" button, at the bottom of the camera, there is a label of QR Code, then scan the QR code with your smart phone, it will show the ID, input the user name and password, then click "Save".
Method 3
Click "Search", then you will get the local camera list in your phone. Choose the camera which you want to view, input the user name and pass word, then click "Save".
Note: The default account and password are admin. If changed, please input the new one.

Wanscam operation interface



Operation of computer LAN

> Open or start the Search Tool application
> The local camera IP address of the camera will be showed on the Search Tool

Note
> Device: camera software standard
> Name: camera device name
> IP Address: camera local IP address
> P2P ID: can be used for APP locally and remotely connection
> IP Match: will work when the Search Tool showed subnet not matched
> Double click the IP address in the Search Tool, but make sure your browser is Internet Explorer 11, Chrome or Firefox and sign into the camera via login interface, both account and password are admin

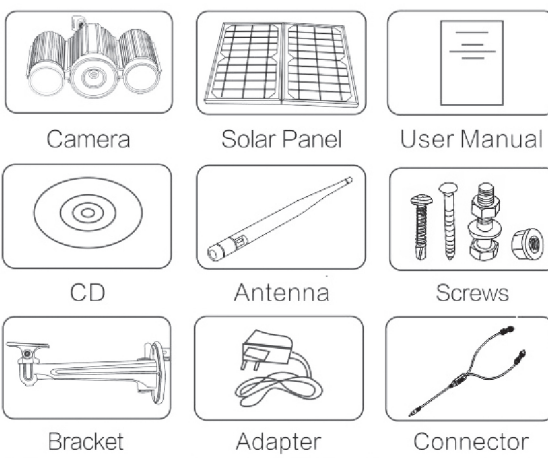
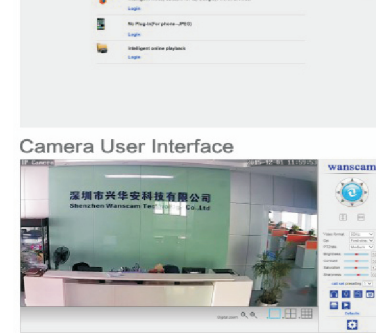
04
LOGON
SETTINGS



Note

> Factory default User Name and Password both " admin".
(Please change the default password after login and remember new password)
> The login interface will be showed after inputting the password
(One device Max support: 6 users access at the same time)
> After installing the plugin, sign in the camera on IE 11, Chrome or Firefox

Login interface



Note: The package includes 16G TF Card, which has been installed in the camera body

04
LOGON
SETTINGS

05
PACKING LIST

06
COMMON
QUESTIONS

Q: APP cannot setting wifi for camera

A: > Please use IE browser setting wifi.
> You can make the camera and your computer in the same LAN
> Use search tool login webpage and setting wifi.

Q: No AP signal(Unavailable for 4G version)?

A: > Please check if the camera connected with network Cable, if so, disconnect network cable
> Please check if the camera connected with router wifi, if so, reset the camera
> Please press the Reset button 10s to restore the camera to factory settings

Q: The 4G function cannot be connected or not stable?

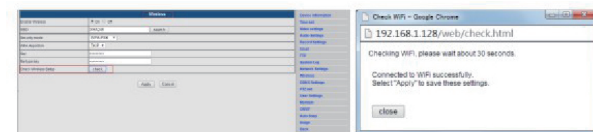
A: > Please check if 3G/4G signal normal.
> Please adjust the 4G signal through its antenna:
After connected with WiFi-SSID: Solar Cam-4GXX, input the IP 192.168.1.1 in the browser to check and adjust the signal
Note: The WiFi-SSID max support 10 users

Q: Camera working duration is too short?

A: > Please check if the solar panel connected correct with the connector line
> Please check if it's best environment to install the solar panel to get the best sunshine
> Please check if the solar panel and the bracket have been installed as 45 degree
> Please check if the 4G signal is stronger if do, the consumption is lower the camera duration is longer

Q: After connected to the WiFi-SSID "Solar Cam-4GXX" the mobile phone can connect to Internet, but the camera shows offline.

A: > Click on the gear symbol (bottom right)
> within configuration choose "Wireless"
> Click "search", choose your router via the SSID,
> Input the wireless password accordingly
> Click "check" About 30s, will pop-up window and inform if wifi setting is successful.
> If successful, then click "Apply", plug out the cable, and check the IP address on the Search Tool
Note: Please repeat the settings again if no IP address on the Search Tool



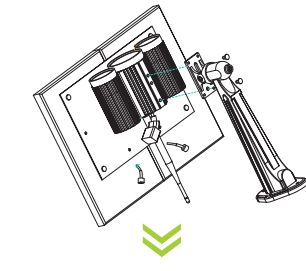
wanscam®
New Vision, New Life

太阳能网络摄像机
新能源，低功耗

使用说明
> 请仔细阅读本说明书
> 未经允许不得自行拆解相机
> 使用前充电8小时为最佳
> 本产品安装在空旷无遮挡的环境下使用
> 50米内信号传输距离(4G产品)
> 本产品最终解释权归本公司所有
注: " "特指为4G产品特有功能

深圳市兴华安科技有限公司
深圳市宝安区西乡街道西乡社区西乡华兴工业园2栋六层西
网址: www.wanscam.net www.wanscam.com
电话: +86-755-33582428

HW0029



安装支架将相机与支架从包装里取出，从包装里取出外六角螺丝（6X8MM）与扳手，安装用螺丝固定相机相应位置。

注: 4G版本相机先安装SIM卡再装天线

网线连接: 将机器太阳能充电板输出线连接到机器输入线。另一头插入网线端口。

注: WIFI版本相机需要插入网线或者配置WIFI。

▲注意太阳能板输出线及机器输入线箭头方向必须保持一致。

多种工作模式:
开机模式: 当接上太阳能板充电输出线或电源适配器供电时，蓝色指示灯亮，机器开始工作，启动时间为10秒。
关机模式: 当无太阳能板充电或电源适配器供电时，等待5分钟后，使用电源适配器带电在电源输入口连续拨动3次，每次停留1秒钟，机器进入关机状态，指示灯熄灭。

充电指示灯:
1. 开机指示灯为蓝色
2. 关机指示灯为绿色
当指示灯闪烁红色时，电池电量为30%
当指示灯闪烁绿色时，电池电量为50%
当指示灯闪烁红色时，电池电量为80%
当指示灯绿色常亮时，电池电量为100%
▲使用前建议用电源适配器充电8小时以上。

APP下载

在连接网络摄像机之前请先下载安装"Wanscam"手机APP, Google Play商店(www.googleplay.com)或苹果商店搜索"Wanscam"即可下载安装。

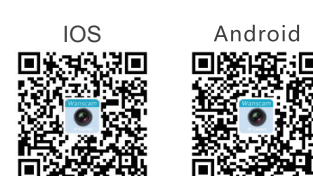
APP下载链接:



02
连接方式

01
安装固定

可以通过以下二维码下载并安装APP



连接方式

> 摄像头通电后检测到网络连接就会发出一个AP信号;
注: 当网线接入时, AP信号将自动关闭!

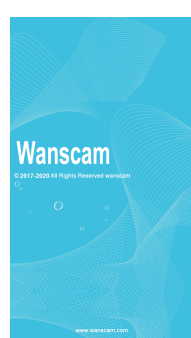
> 通过手机或笔记本的WIFI模式搜索并连接摄像机发出的AP信号(如CAM00001)
默认密码为: 123456789

4G连接方式(含4G产品才有此功能)

> 通过手机WIFI在相机周边30米内搜索并连接相机WIFI-SSID(如Solar Cam-4GXX)密码: 123456789

手机访问摄像机

点击手机APP图标运行, 进行添加网络摄像机:



03
APP操作

02
连接方式

03
APP操作

二维码扫描: 点击主界面" + "号, 然后点击"扫描条码"扫描添加网络摄像机, 输入密码(默认密码admin)之后点击完成。



Wanscam 查看列表



电脑端网页操作

> 当连接好网络摄像机后, 请双击查看图标 " "。查找器将会自动搜索并显示出当前局域网内网络摄像机的IP地址等信息。

提示
> 机型: 表示摄像机的型号类别。
> 设备名称: 设备名称显示。
> IP地址: 当前局域网摄像机的IP地址。
> 功能号: P2P ID, 可用手机APP连接局域网, 远程使用。
> 一键匹配: 如果IP地址显示"子网掩码不匹配", 请点击"一键匹配"。
> 双击搜索工具中的IP地址, 进入网络摄像机的设备界面, 用户名和密码都是: admin

04
登录设置



提示

> 默认用户名和密码都是 admin
(为了安全起见, 请登录后在后台设置新的用户名和密码)
> 输入用户名和密码之后, 会进入浏览器的设备界面
(一台设备可同时支持6个用户在网页查看)。

> 请先下载并安装插件, 然后选择对登录模块

登录界面

操作界面



注: 本产品标配16G TF卡, 已内置于摄像机主体中

04
登录设置

05
包装清单

06
常见问题

问: APP绑定WIFI未成功

答: > 可透过电脑直接连接摄像机, 选择I登录摄像机
> 点击设置进入无线局域网设置进行WIFI绑定
> 具体登录参考电脑端网页操作

问: 4G连接不上或者卡顿

答: > 检查3G/4G信号是否正常
> 通过调整4G天线来增加信号强度, 在连接WiFi-SSID: Solar Cam-4GXX的前提下可输入IP地址192.168.1.1观看并调节信号强度
注: 此WiFi-SSID最多只能连接10个用户

问: 无AP信号(4G产品无此功能)

答: > 检查机尾是否连接了网线, 倘若连接网线AP自动关闭;
> 确认相机使用之前是否设置了WIFI, 倘若设置WIFI时没有AP信号输出
> 可长按相机机尾的RESET键10秒恢复出厂设置

问: 相机待机时间短

答: > 检查太阳能板输出线是否连接正确
> 检查太阳能板日晒受光时间是否为最佳
> 检查太阳能板安装角度是否为45度
> 检查电池电压值是否一致
> 检查4G信号强度, 信号强度耗低, 信号弱功耗大

问: 连接Solar Cam-4GXX可以上网, 但摄像机不在线

答: > 后台: "无线WIFI需要绑定"
> 点击搜索, 选择需要连接无线信号的SSID, 在"共享密钥"输入无线的密码, 点击"检测", 30秒左右会弹出对话框提示无线连接成功与否。
> 若提示成功, 点击应用, 然后断开网线, 并查看查找器是否搜索到摄像机IP地址。

