

## LUNA X-RAY VIEWER INSTRUCTION MANUAL

### PURPOSE

This product is used in diagnostic imaging for viewing most types of x-rays as panoramic, cephalograms, periapical, interproximal, occlusal, carpal, sinuses and TMD among others. Follow the instructions presented in this manual regarding the proper use, precautions, care and storage.



### USE INSTRUCTIONS

- 1► The Luna X-Ray Viewer may be used on the table, where it offers three leaning angle adjustments or hanging on the wall through the back orifices in a vertical or horizontal position (Fig. 2);
  - Flat Surface Use: Use the built-in holder in the back of the plastic housing, there are three angle adjustments, choose the best viewing position;
  - Wall Mounting: After defining the desired wall spot, mark the holes with a pen and drill them on the wall. To hang it horizontally leave a distance of 16,5 cm between holes or 14,5 cm to hang it vertically. Hang the viewer on the screws fixed to the wall. Note: Use 4 mm plugs and 2,5 x 25 mm screws;
- 2► Fit both plastic clips on the upper side of the screen. The side with only one central holder facing forward (Fig. 1);
- 3► Connect the power cable to the connector located in the back of the equipment and the other end (adapter) to the wall socket (Figs. 5 and 6);
- 4► Turn the Luna on through the On/Off switch located at the left side of the viewer (Fig. 4);
- 5► Use the plastic clips at the top of the viewing area to hold the x-ray in place for visualization (Fig. 1);
- 6► When the diagnose is done, turn the Luna off through the On/Off switch again. At the end of the work day, disconnect the adapter from the wall socket.

### PREVENTIVE MAINTENANCE

Cleaning:

- 1► Keep the viewing screen clean, excess of dust or other residues will reduce the capacity of visualization and diagnostic of the x-rays. For the cleaning procedure, unplug the equipment and wipe it with a soft cloth dampened in water and neutral soap, right after that, use a dry soft cloth that does not shed to dry it properly;

### COMPONENTS DESCRIPTION

- 1 - Plastic housing
- 2 - Viewing screen
- 3 - Plastic holders

- 4 - Wall mounting orifices
- 5 - Identification Label
- 6 - Retractable support

- 7 - Power connector
- 8 - On/off switch
- 9 - Power adapter

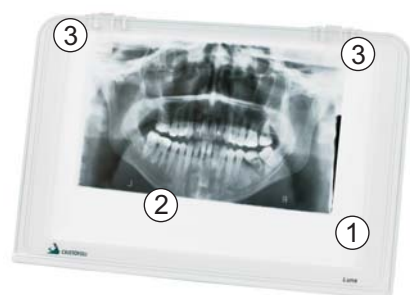


Fig. 1

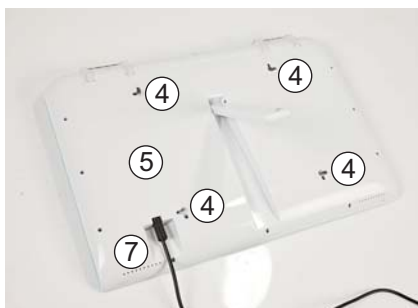


Fig. 2

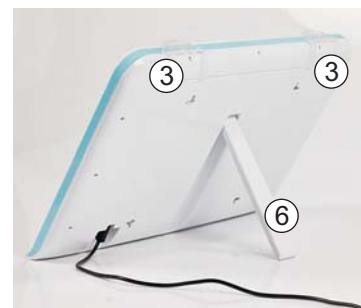


Fig. 3



Fig. 4

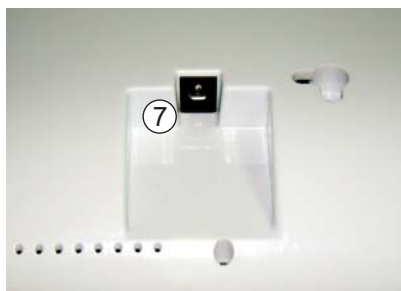


Fig. 5



Fig. 6

## SPECIFICATIONS

TECHNICAL DATA	LUNA - X-RAY VIEWER
ADAPTER:	
INPUT .....	100 - 240 V AC
OUTPUT .....	15 V DC - 0,8 A
FREQUENCY .....	50/60 Hz
POWER .....	10 W
LED / LIFESPAN .....	2 LED bars (51 LEDs per bar) / 100.000 hours
COLOR TEMPERATURE .....	☉ 6.500 K
*ILLUMINANCE .....	6.000 Lux
LIGHT .....	Cold, polarized light with no flickering
STABILITY .....	• 2%
UNIFORMITY .....	☉ 0,7
GROSS WEIGHT .....	1,5 kg
NET WEIGHT .....	1,1 kg
SCREEN DIMENSIONS (W x H) .....	30 x 20 cm
EQUIPMENT DIMENSIONS (W x H x D) .....	35,7 x 24,3 x 3,5 cm

\*Gauging provided with light meter flush with the center of the screen.

Table 1

## WARRANTY CERTIFICATE

Cristófoli X-Ray Viewers are warranted to be free from defective materials and workmanship under normal use and service, for a period of one (1) year from the date of delivery to the buyer (proof of purchase required). The importer's sole obligation under this warranty is to replace the defective part or exchange the whole product, whatever the importer judges adequate.

The importer will not pay for labor, technician dislocation costs, parts replacement or product exchange. As per importer's discretion, defective parts or product may have to be returned to **Cristofoli Medical Equipment Co., Ltd.** or kept on the dealer for future inspection. In the event warranty service must be performed to correct any defect; only **Cristofoli Medical Equipment Co., Ltd.** (manufacturer's authorized importer) shall provide this service. The manufacturer and its importer will not accept the return of goods unless authorized in writing prior to the return of any shipment. The shipment must be made in accordance with the importer's instructions.

**Cristofoli Medical Equipment Co., Ltd.** is not liable for damages caused by any different use from the intended purpose of the equipment, natural wearing or by the use of materials not in conformity with the manufacturer specifications. This warranty is void when failure or defect is caused by conditions beyond the manufacturer or importer's control, such as: damage resulting from mishandling, neglect, misuse, improper maintenance, electrical surge accident or alteration/repairs by anyone other than an authorized dealer.

The LED bars are not covered by this warranty.

No person, agent or dealer is authorized to change, modify or extend the terms of this warranty in any manner, whatsoever.

## HOW TO PROCEED WHEN SERVICE IS NEEDED

Before contacting your local distributor or dealer for an estimate and eventual repair of your equipment, please, have in hand, the model of your equipment, voltage, serial number and the manufacturing date (found on the Identification Label located in the back of the equipment, as shown on Fig.2) and a description of the problem. It will be also necessary to have the original invoice from your dealer to confirm the date of purchase. In order to protect your rights, attach a copy of the invoice and send it to your dealer who will refer it to our company. Do not send products direct to any addresses mentioned in this manual. Always contact your local dealer.

If you have problems contacting your dealer, contact us by e-mail: [cristofoli@cristofoli.com](mailto:cristofoli@cristofoli.com), Fax: 0086-574-87913735 or through our website: [www.cristofoli.cn](http://www.cristofoli.cn).



Manufacturer:  
Cristofoli Medical Equipment Co., Ltd.  
Address : Block 2-2F, No. 1177, Lingyun Road, Ningbo National Hi-Tech Zone,  
315103, Zhejiang, China.  
Tel : 0086-574-87913737  
Fax : 0086-574-87913735  
Email : [cristofoli@cristofoli.cn](mailto:cristofoli@cristofoli.cn)  
Web : [www.cristofoli.cn](http://www.cristofoli.cn)