

JOHANSON



Reform

Reform

A modular sofa

offering unlimited opportunities to change shape and function, with a light, sleek design.



Adaptation and expandability in all spatial dimensions is our basic principle.

Like life itself, our working spaces are in a constant state of change. Trends and individual preferences evolve regularly. Things come and go, whether it is as a result of technological innovations, growing needs or a pending move. But one thing is always true: our work spaces reflect the way we think and feel.

This is where we spend most of our lives.

Furnishings that can move and grow with us, and take on new roles, are a prerequisite. Flexibility and adaptability are everything.

Growing demand and the design of more flexible and sustainable working environments call for a whole new kind of capability in office furnishings.

Furniture solutions that grow with you, that are versatile and even adjust to take all dimensions of sustainability into account, are becoming a permanent companion in times of corporate change.

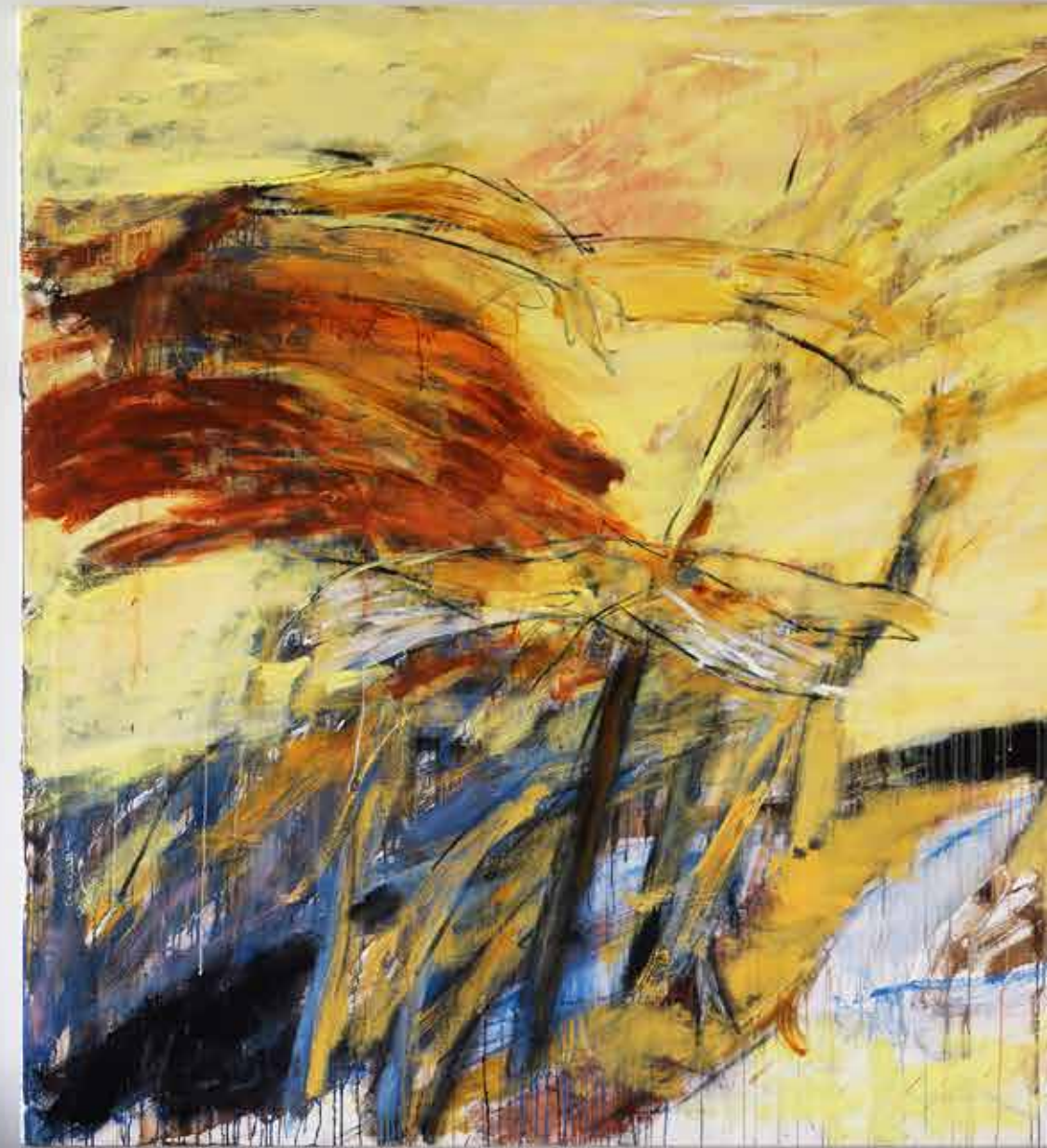
The Reform sofa responds to your needs today and can respond to your needs tomorrow!



Reform design by Alexander Lervik

Alexander Lervik's work is characterized by innovation, humor, passion and intensity. Lervik collaborates with some of the foremost Swedish and international producers, among them Johanson. Several of Johanson's pieces of furniture are signed Alexander Lervik such as Reform, Eye and Edith.

Reform



Modules 3-seater, low back, open back
Upholstery Camira Blazer CUZ86
Colour White
Wood Oak

Modules 3-seater bench
Upholstery Camira Blazer CUZ31
Colour White
Wood Oak

Reform

Reform comprises some 30 items of furniture, all of which work equally well on their own or combined in different constellations. In some instances, needs are met with just a few furnishings. A simple seating group in a waiting room or lobby. A private corner for a few minutes' seclusion. Chairs and tables for informal meetings in the office or a pleasant shared space at work. The versatility of the series lies in the rich potential for variation and the opportunities to choose the colour of items to meet your needs and wishes.



Modules Daybed
Upholstery United Leather Vintage collection colour Cognac
Colour White
Wood Oak

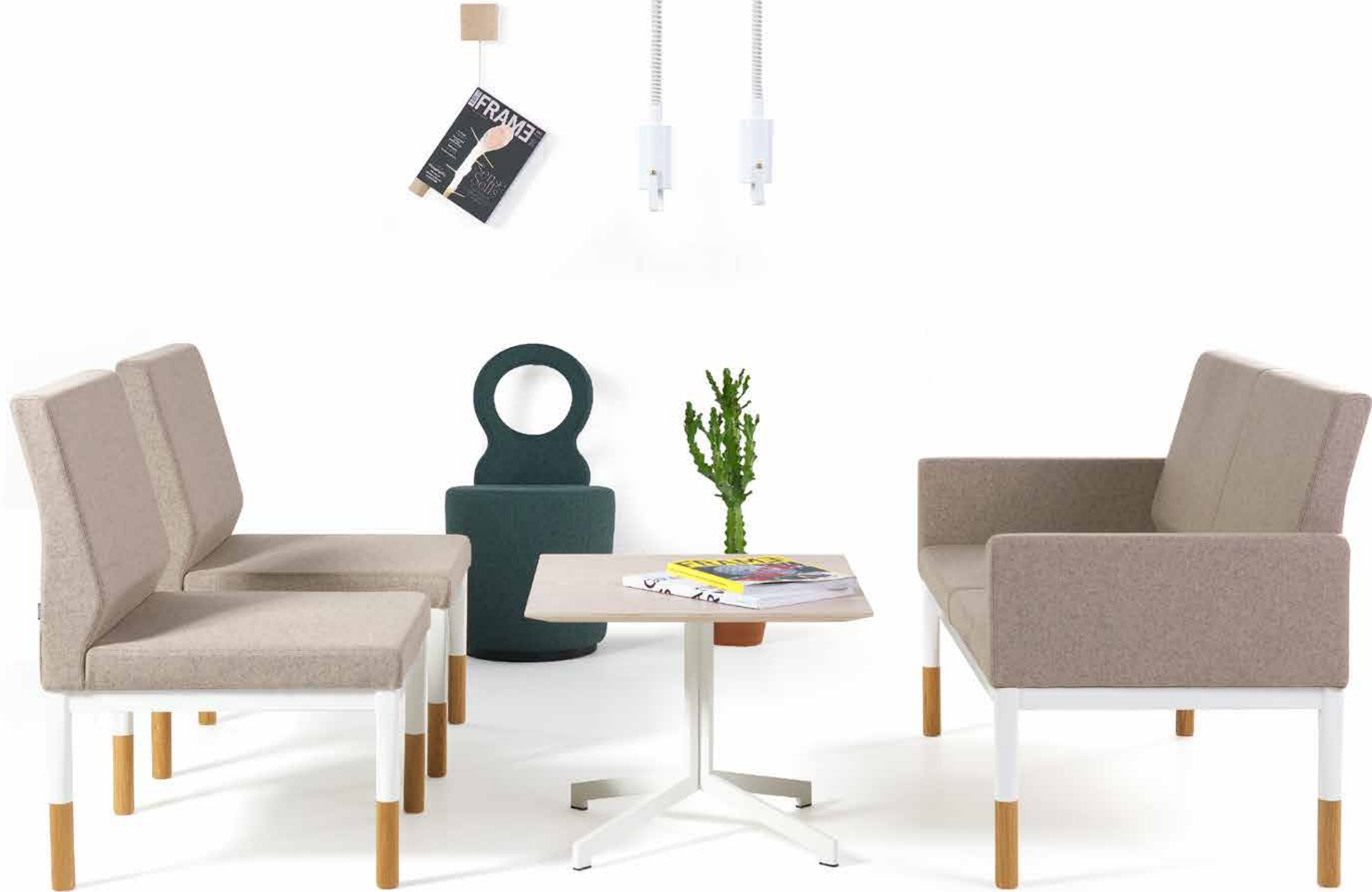


Modules 2-seater, low back, 2pce 20cm table
Upholstery Kvadrat Steelcut Trio 853
Colour White
Wood Oak



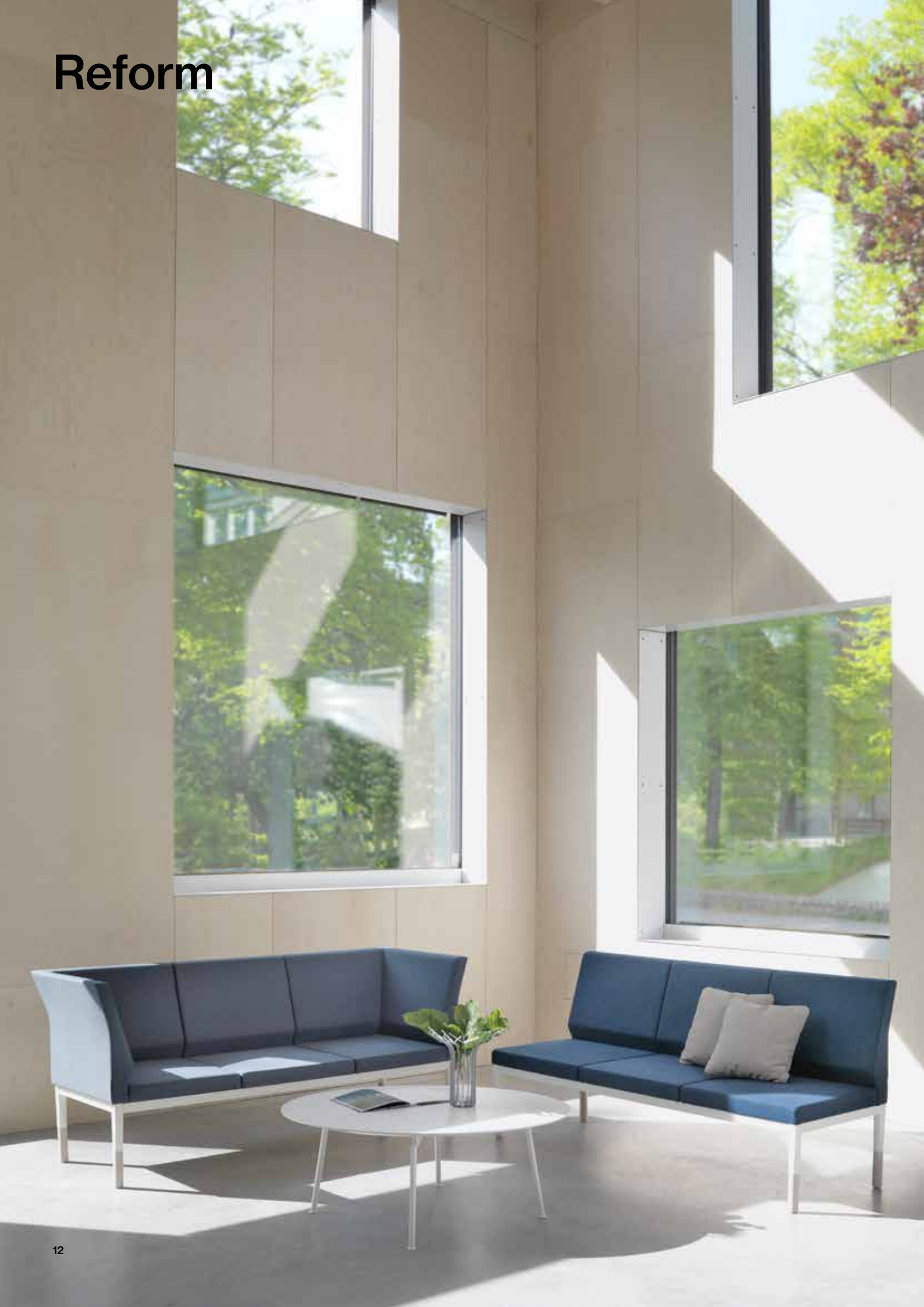
Modules 5-seater corner sofa with low back, 60cm table
Upholstery Kvadrat Steelcut Trio 713
Colour White
Wood White stained oak

Reform



Modules 1-seater, low back
Upholstery Camira Blazer CUZ86
Colour White
Wood Oak

Modules 2-seater, low back, with 2pce armrest 5cm.
Upholstery Camira Blazer CUZ86
Colour White
Wood Oak

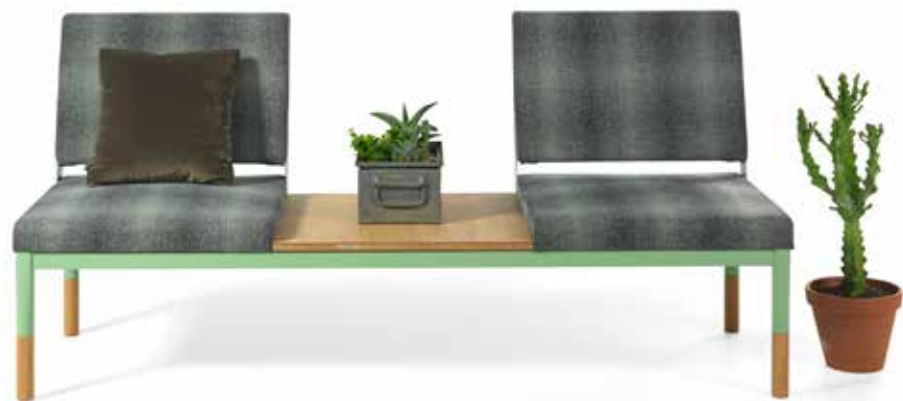


◀
Modules: 3 seater, low back, long corner back
Upholstery: Kvadrat Revive 764
Colour: Ral 9010 structure
Wood: White stained oak

Modules: 3 seater, low back
Upholstery: Camira Blazer CUZ62
Colour: Ral 9010 structure
Wood: White stained oak



Modules 4-seater, middle high back, with electric equipment
 Upholstery Kvadrat, Seat and low back: Mode 009. Top: Canvas 124
 Colour White
 Wood Oak



Modules 2-seater, low back, 60cm table
 Upholstery Camira Hebden HWC24
 Colour Ral 6021
 Wood Oak



Modules 7-seater corner sofa, low back, with 1pce armrest 10cm.
 Upholstery Camira Blazer CUZ84
 Colour: Ral 8001
 Wood Oak

Reform



Reform lets you adapt solutions to your needs. Mix and match the various models. Sofas and chairs with high, medium and low backs add personality to flexible furnishing solutions. With single seats, benches and two, three and four-seater options it's easy to vary the look and feel of furnished spaces. And by adding power sockets and integrating clipboards and tables, you can make your choices even more versatile. Reform lets you customise solutions to meet your needs and configure areas large or small to serve a variety of purposes and functions.



▲
Modules 1-seater, middle high back, 2pce dividing walls, with Stay base.
Upholstery Kvadrat Remix 612
Colour Black



◀
Modules: 1 seater, middle high back, 2pce dividing walls
Upholstery: Inside dividing walls + edges: Camira Synergy LDS74
Outside: Camira Synergy LDS38. Inside top: Camira Synergy LDS76.
Inside Bottom: Kvadrat Rime 521. Seat: Kvadrat Remix 722.
Button: Camira Synergy LDS38 Ø50
Colour: Ral 9010 structure

Modules: 1 seater, middle high back, 2pce dividing walls
Upholstery: Inside dividing walls + edges: Kvadrat Remix 722
Outside: Camira Synergy LDS76. Inside top: Camira Synergy LDS74.
Inside Bottom: Kvadrat Rime 521. Seat: Camira LDS38.
Colour: Ral 9010 structure

Reform



Modules 1-seater, middle high back, 2pce dividing walls
Upholstery Camira Hemp HWP06
Colour White
Wood Oak

Reform



Modules 3-seater, middle high back, long corner back
Upholstery Kvadrat, Inside: Hallingdal 103. Outside: Hallingdal 113
Colour White
Wood Oak

Modules 2-seater, middle high back, long corner back
Upholstery Kvadrat, Inside: Hallingdal 103. Outside: Hallingdal 113
Colour White
Wood Oak



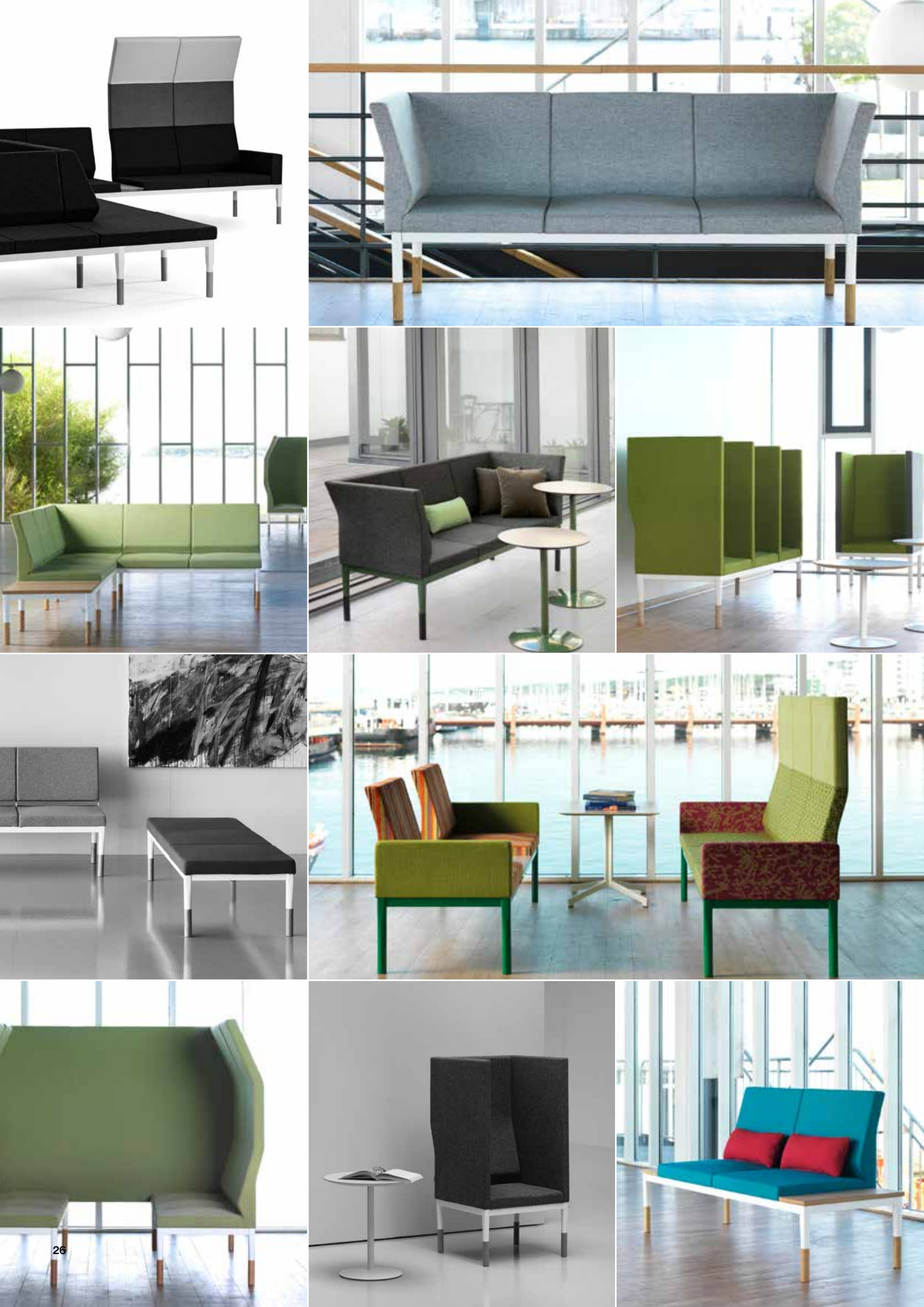
Modules 4-seater, high back, dividing wall 212cm, armrest with clipboard
 Upholstery Camira, Seat, low back and armrest: Hemp HWP06. Middle part and dividing wall: Hemp HWP02. Top: Hemp HWP05.
 Colour White
 Wood Oak

Reform

Reform meets the criteria you have for a compact workspace. By combining different models you can create spaces for individual meetings and “rooms in a room”. A refuge where it’s possible to work undisturbed in a crowded environment. A hub for individual work and meetings that is a haven of tranquillity in busy, noisy surroundings. Connect electricity for good lighting and a charging station for computers and phones. With so much choice, you can opt to give Reform a strong, stand-out personality or let it blend subtly into an existing setting. Simply design your Reform solution to meet the needs and requirements of the setting in which it is to be placed.

Modules 4-seater, middle high back, with electric equipment
Upholstery Kvadrat, Seat and low back: Mode 009. Top: Canvas 124
Colour White
Wood White stained oak





Reform – The Endless Possibilities

Form

Responds to human dimensions (anthropometric)

Forms follow function (ergonomic)

Lumbar support

Reform is sleek, minimal and modern in its design

Components

- Seat
- Modular back available in 3 different heights
- Corners available in 2 heights
- Armrests available in 2 thicknesses
- Dividing walls (higher armrests) allow for different configurations of personal environments (pods) and different seat widths
- Reform Tables available in 3 different widths can be configured into regular seating and personal environments (pods)
- Height adjustable reticulating work surface
- Drop and Plug
- Integrated duplex power is easily accessible
- USB jack
- Foot rest

Function

Reform can be used for individual or collective seating

Reform can be used for individual or collective environments (pods)

Ideal for office, retail, hospitality, institutional and public environments

Its adaptability and expandability are demonstrated by its many components allowing Reform to be configured and adapted to your changing needs over time.

Materials

Available in a myriad of upholstery fabrics

Solid metal legs available * Shown with metal and oak veneer legs

Steel frame is offered in 399 colours



Metal Finish

All frames and metal parts are available in Multicolour (RAL colours) as well as black and white finish. Steel frame is offered in 192 Solid Collection Colours, 192 Structure Collection Colours and 15 Pearl Finish Collection.

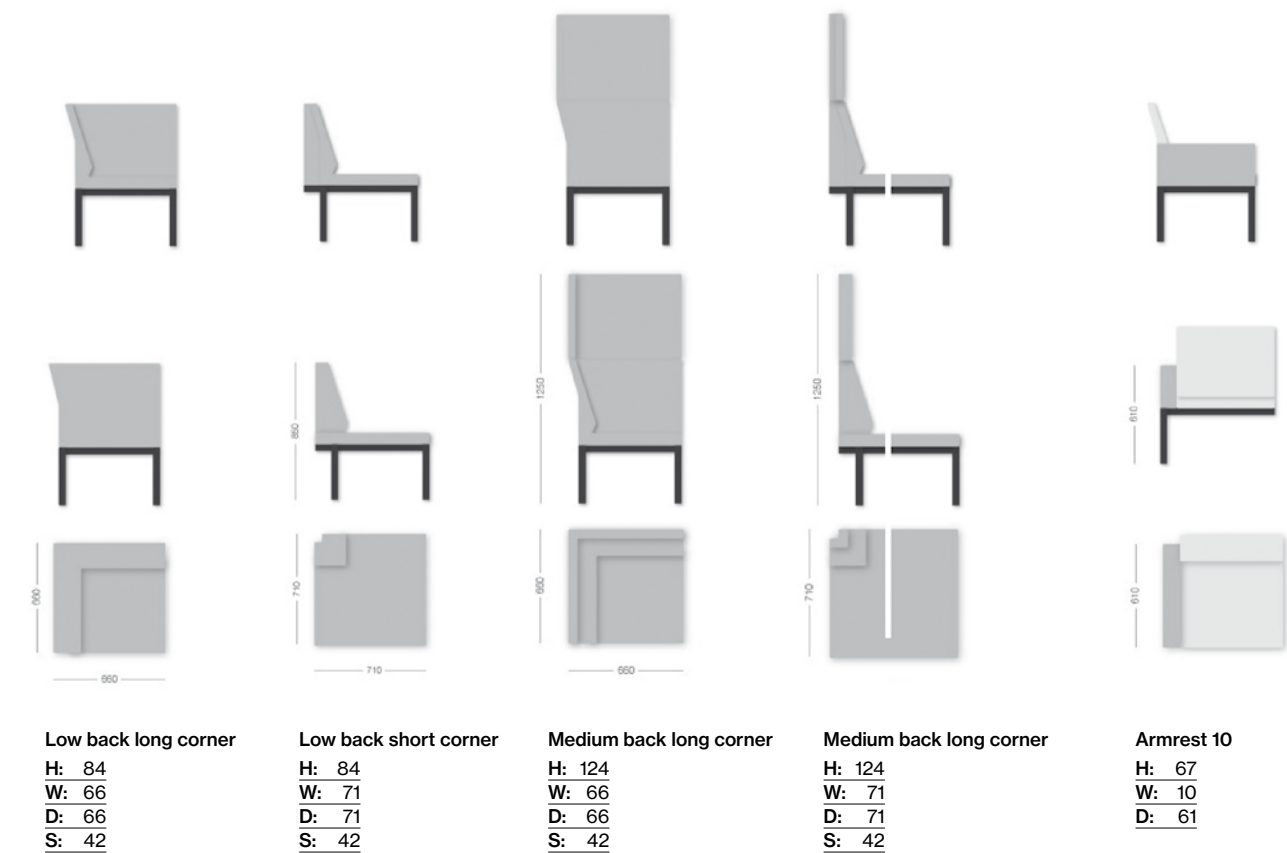
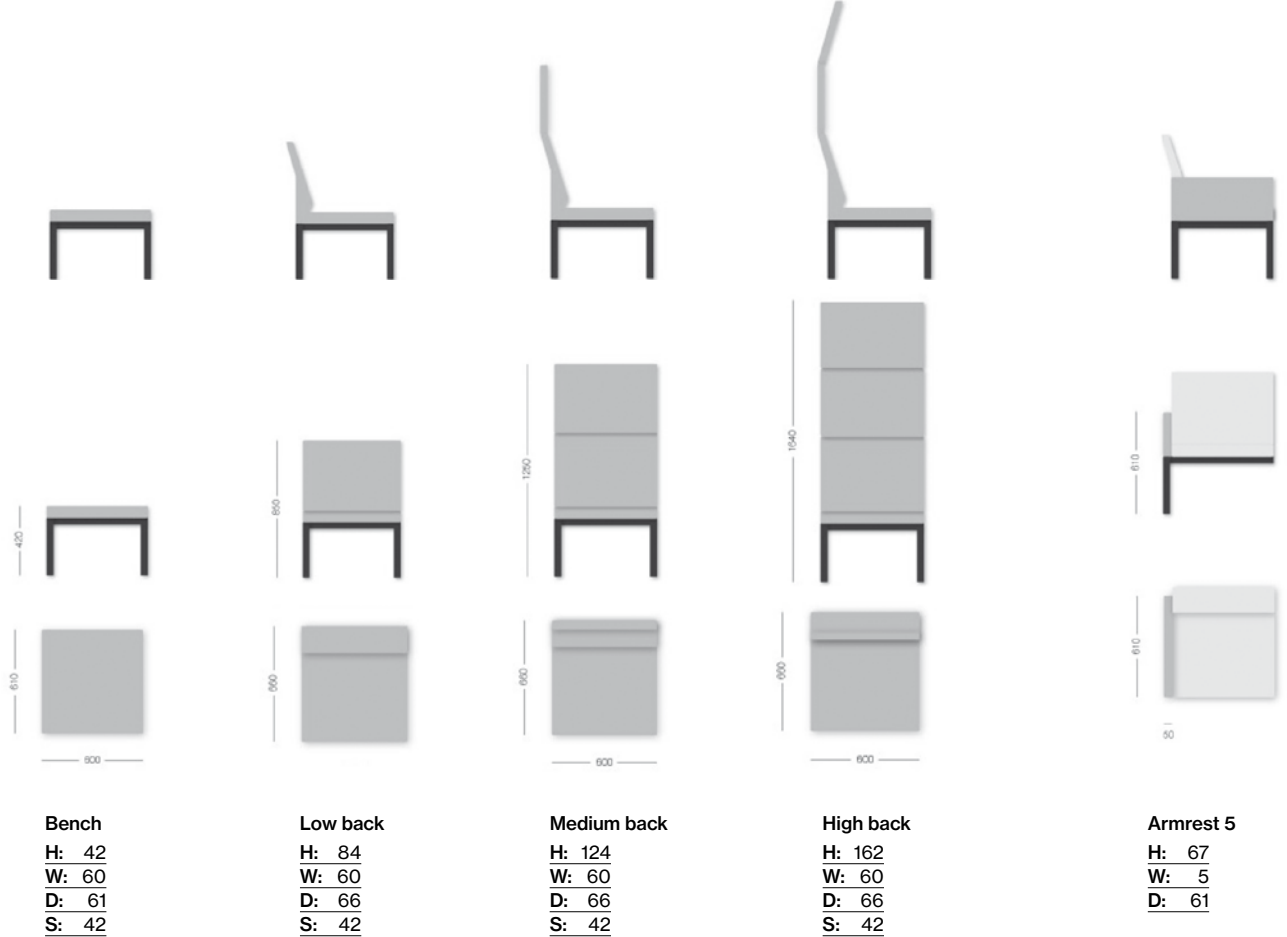
Wood & Laminate

As standard the table tops are in oak. But we can also manufacture them in our standard laminate and veneers. Besides this we can also offer special laminate, veneers and stain, contact Johanson customer service for more information.

Awareness

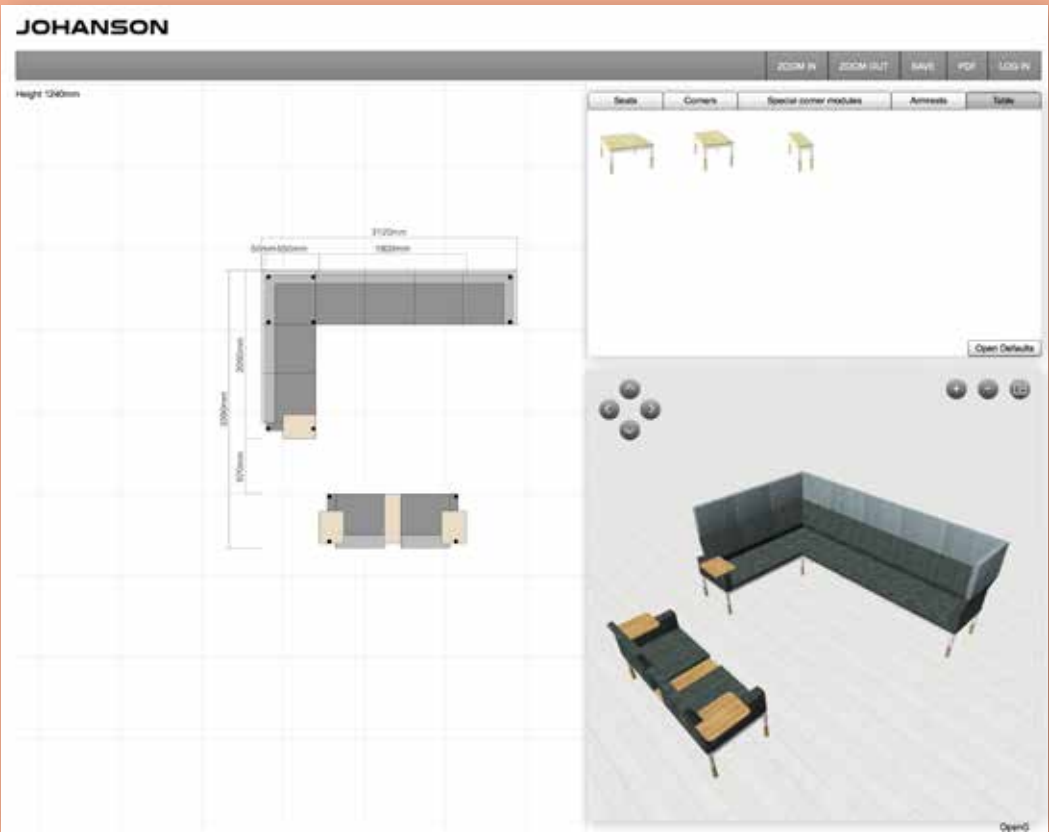
Socially aware – product produced 100% in Sweden
Environmentally aware – product produced 100% in Sweden.

Reform – Modules



Drawing program

Your opportunities to adapt the Reform series to specific needs or spaces are almost limitless. The different modules in the series can be used like building bricks to create the shapes, sizes and functions you need for a variety of settings. The specially developed drawing program for Reform lets you test endless combinations and configurations for whatever context you require. The program is easy to use and shows models in both 2D and 3D options. Visit the Johanson website (www.johansondesign.com) and click on the link to start using the program.



Example – Modules



Environmental, quality and durability

A photograph of a forest stream with mossy rocks and autumn foliage. The scene is a dense forest with trees having yellow and orange autumn leaves. A small stream flows over large, moss-covered rocks, creating a small waterfall. The water is dark and reflects the surrounding greenery and rocks.


Johanson understands the importance of quality and a good environment.

Acoustics is a Greek word that means the study of sound. It is a big subject and here at Johanson's, we want our sound absorbers to contribute to a good acoustic environment. Technically speaking, the sound is not actually absorbed by the panels. It is more that when sound waves pass through a material such as a fabric, some of their energy is lost through friction, so it is said that the sound has been absorbed by the material. The amount of sound absorbed depends on the structure of the fibres, and the density and thickness of the material.

We think it is important to test products in order to ensure the best possible results. Some of these tests are carried out in-house here at Johanson's. But we also use external agencies in order to get an independent third-party opinion.

Quality and the environment are important to us. The company is certified in accordance with the ISO 14001 environmental standard and the majority of our products also fulfil the strict Swedish Möbelfakta standards on quality, environment and social responsibility. We also comply with the highest EU standards for testing and strength in public spaces. Our sound absorbers are tested in accordance with EU standards and all our products are tested for durability by the SP Technical Research Institute of Sweden.

Virtually all our manufacturing takes place at Markaryd in Sweden in a new, modern production plant. No product leaves the premises until the staff, who have many years of sound furniture expertise behind them, have ensured that the quality is absolutely world class. Because we manufacture our own products, we can ensure our quality standards are high, cut lead times and minimise transport.



Cover
Modules
Upholstery
Colour
Wood

3-seater, low back, long corner back
Kvadrat Hallingdal 116
White
Oak

JOHANSON

Johanson Design AB | Anders Anderssons Väg 7 | 285 35 Markaryd | Sweden
Tel +46 – 433 725 00 | www.johansondesign.com