

# Mercedes-Maybach S 600 Guard VR10



MAYBACH





## Protection and comfort in their finest form.

The Mercedes-Maybach S 600 Guard is like a stream of superlatives. Its exclusivity, which delivers a new take on the concept of luxury, combines with an impression of strength to unfurl a new dimension in aesthetics. With a sublime interior concept and formidable presence. Its wheelbase length is 20 cm longer than that of the S-Guard, giving its occupants an enhanced sense of well-being and accentuating the car's prestigious character. Hidden beneath the exterior, the integrated protection system is based on a sophisticated, holistic concept that has been further developed for the Mercedes-Maybach S 600 Guard. The continuous floor panel, outstanding resistance values and a wealth of innovative components make it the undisputed leader among special-protection vehicles. As a result, the vehicle not only exudes exceptional poise and assurance, it also conveys a valuable sense of relaxation and safety.





## The first impression is a lasting one.

The aesthetic lines underscore the dynamic, powerful character while the striking front design signals the Mercedes-Maybach S 600 Guard model's ambition to lead. Closer inspection reveals the sheer scale of the car's exclusivity, perfection, effortless superiority and elegance. At the distinctive front end, the dominant radiator trim issues a confident statement, flanked by the clearly contoured LED High Performance headlamps. The longer wheelbase lends the vehicle a further hallmark design feature in that the discrete nature of the rear doors allows the triangular windows to be integrated into the side wall. Signs of greatness with a seal of premium quality in the shape of the Maybach emblem.





## A new way to experience exclusivity.

The new spaciousness, elegant design and high-grade materials finished to perfection create an atmosphere for complete relaxation, stylish enjoyment and abundant entertainment. Yet your Mercedes-Maybach S 600 Guard likewise offers the ideal conditions and environment for concentration and calm – thanks to a comfortable and perfectly appointed multi-media workstation in the rear. The clear architecture, the sophisticated light concept and the fine interior trim display a great sense of elegance and the ability to make sensuality and luxury come alive.





Executive seats



Chauffeur package, Individual Entertainment System in the rear, First-Class rear suite





## A wealth of space for privacy.





Your Mercedes-Maybach S 600 Guard has something truly special in store in the rear – in the shape of two Executive seats that provide outstanding comfort, even on long trips. The lavish design of the seats, the choice materials and the vast range of individual settings form the basis for this. A push of a button is all it takes to adopt a comfortable fully reclined position, while cushion bags offer enhanced protection in the event of a serious frontal collision when the backrest is reclined like this. Further comfort-enhancing features include the optional Chauffeur package, which enables the front-passenger seat to be moved much further forward. The larger footwell allows the rear passenger

behind to adopt a far more comfortable reclined position, made even more agreeable by the electrically extending footrest. The Chauffeur package also enhances safety as it includes EASY ADJUST luxury head restraints for the driver and front passenger. Above all, however, your Mercedes-Maybach S 600 Guard conveys an exceptional feeling of spaciousness. The increased length due to the longer wheelbase is almost entirely to the benefit of the rear passengers. This adds to the sense of privacy as the rear seat backrest is level with the triangular window and therefore behind the door opening – offering additional protection from prying eyes and a particularly elegant form of discretion.





BRV 2009	Sample weapons	Resistance
VR3		Firearms up to 9 mm Luger (Parabellum)
VR4		Handguns up to .44 Magnum
VR5		Handguns up to .357 Magnum
VR6		Rifles up to calibre 7.62 x 39 mm, full steel jacket, iron core

BRV 2009	Sample weapons	Resistance
VR7		Rifles up to calibre 7.62 x 51 mm, full steel jacket, soft core
VR8		Rifles up to calibre 7.62 x 39 mm, full steel jacket, hard steel core with incendiary tip
VR9		Rifles up to calibre 7.62 x 51 mm, full steel jacket, hard steel core
VR10		Extensive protection against threat from Dragunov sniper rifle, even in transparent area

VR = Vehicle Resistance      BRV = Guideline for the testing and certification of bullet-resistant vehicles



## The difference is in how much: BRV 2009 – VR10.

Your personal safety is paramount. As is our aspiration to do more for this than any other. That’s why the protection level of your Mercedes-Maybach S 600 Guard has been further enhanced: featuring an innovative design incorporating special glass and high-grade steel, the vehicle offers extensive protection against the threat of the Dragunov sniper rifle, for example, even in the transparent area. Your Mercedes-Maybach S 600 Guard is therefore the only special-protection vehicle to meet the standards required in resistance level VR10 ballistic testing.



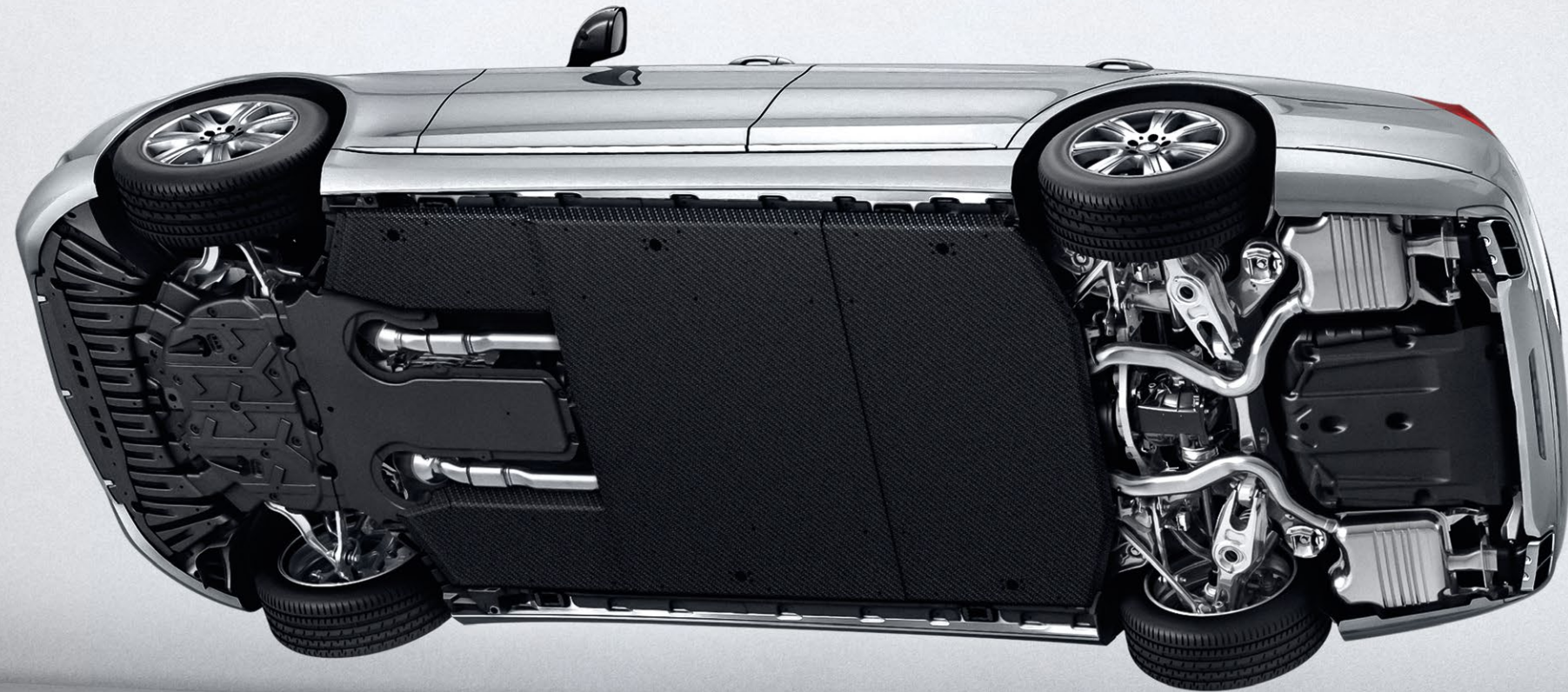


## Strength on all sides.

Increasing dangers due to explosives mean that your Mercedes-Maybach S 600 Guard has to meet stricter requirements in terms of its protective measures. In extensive tests with massive explosions from all sides, steel reinforcements, special glass and additional protective underbody and roof armour provide the required blast resistance. All pressure values measured in the interior of the vehicle are significantly lower than the permitted limit values. A protective area of distinction – the certificate a matter of course.







## Protected from the ground up.

The idea of all-round protection is likewise based on this innovative development unique to Mercedes-Benz and Mercedes-Maybach Guard vehicles. The continuous floor panel combined with the reinforced armour on the transmission tunnel offers all-round protection, meaning that your Mercedes-Maybach S 600 Guard can provide effective resistance, even if two HG 85 hand grenades are detonated simultaneously – a unique measure for your safety.

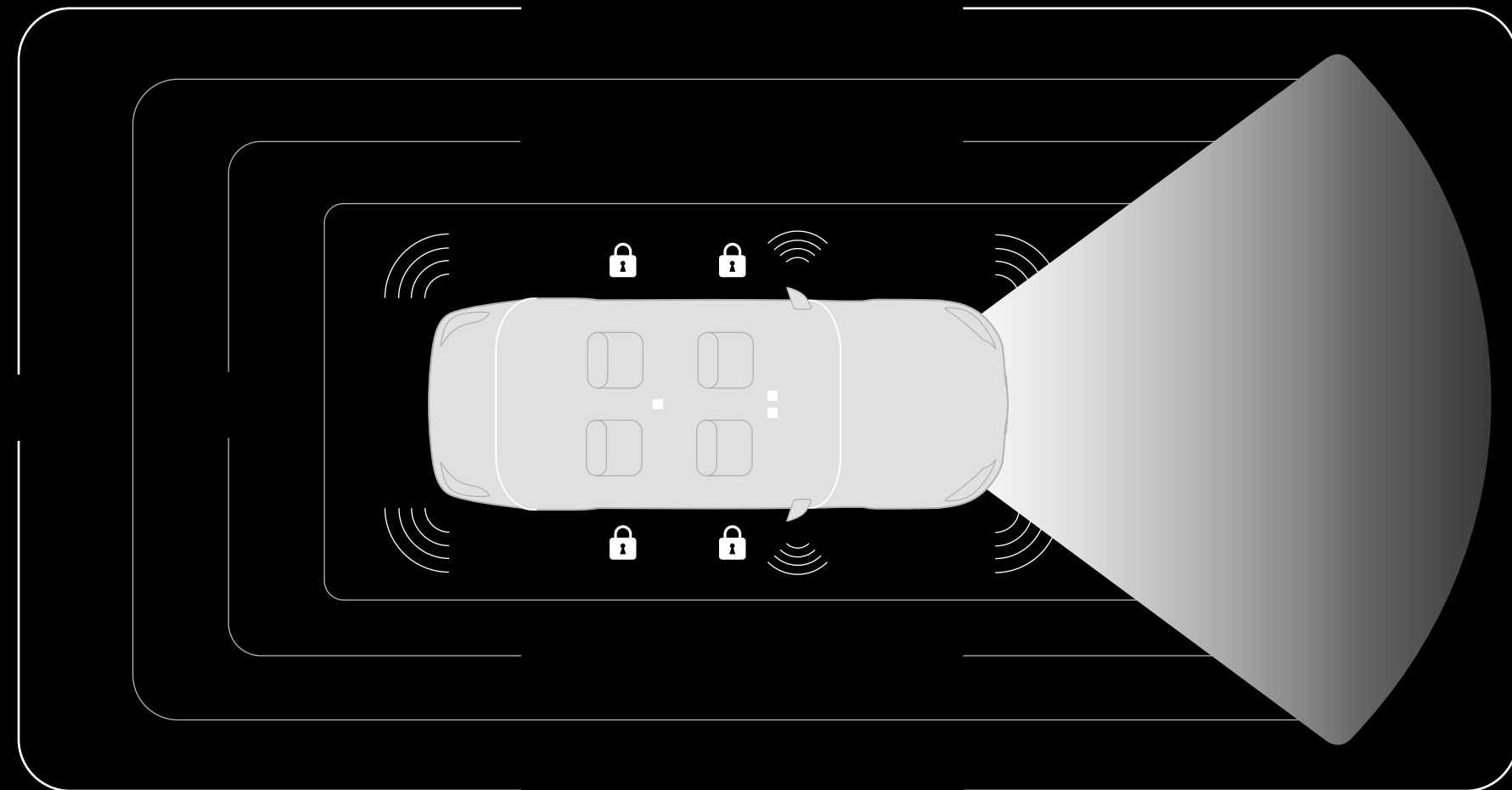


## The focus is on safety.

The additional protection provided through the use of high-grade steel and special higher-strength glass obviously adds to the weight of your Mercedes-Maybach S 600 Guard, making it all the more important to precisely adapt all the chassis components to the physical modifications: redimensioned drive shafts, track rods, axle components and damping systems; reinforced air springs at the front axle; and additional steel springs at the rear axle. Not to mention adaptation of electronic control systems such as ESP and ABS. Early integration is the solution to this complex task.







A trigger switch for the panic alarm system is located near the steering wheel.



The rear-seat passengers can activate the panic alarm system with one touch.



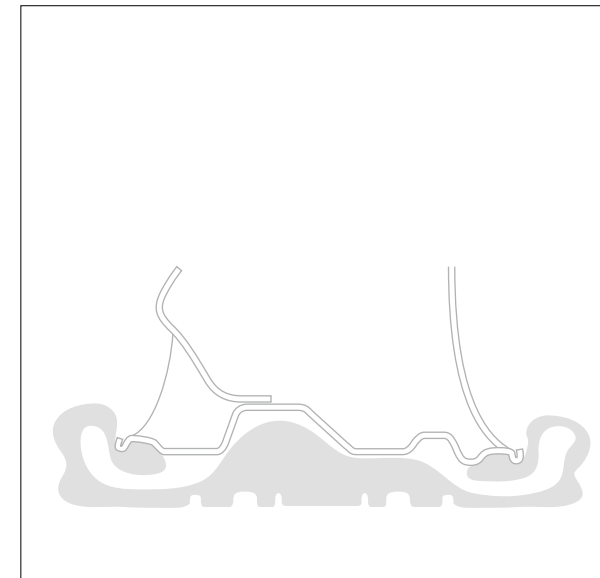
A microphone built into the flashing exterior mirror allows communication with the outside world.

## Always on high alert.

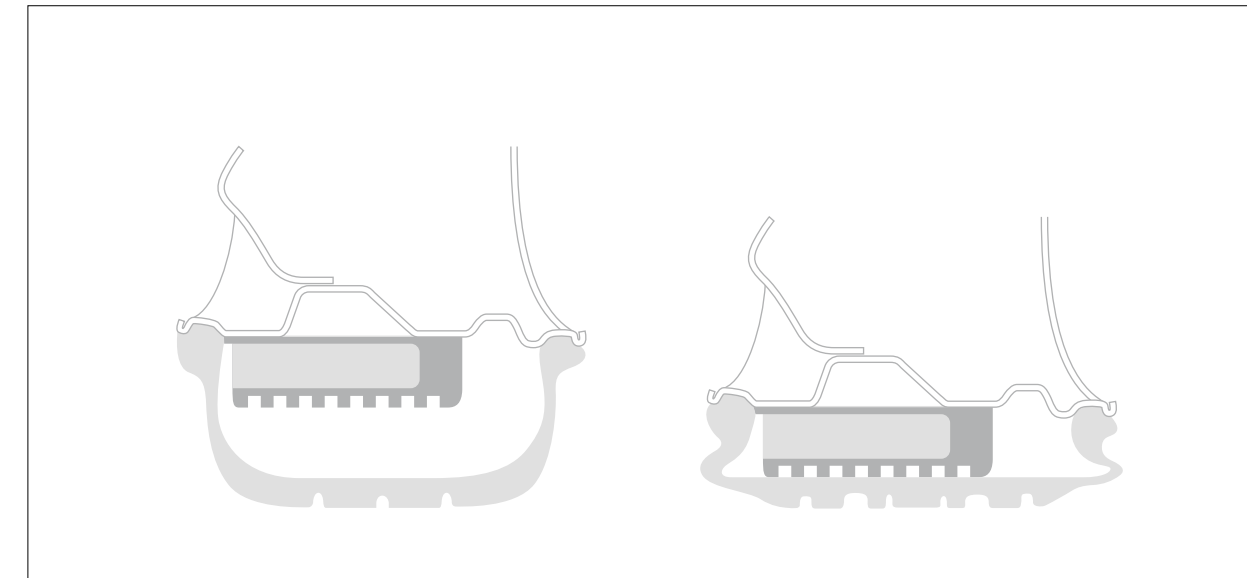
When a potential attacker's cover is blown and they become the focus of attention, their threat is diminished. That's precisely where the panic alarm system in your Mercedes-Maybach S 600 Guard comes in. The system can be activated by the driver, front passenger or rear passengers at the simple push of a button, whereupon it simultaneously emits an ear-piercing acoustic warning signal, flashes the headlamps

and turn indicators, and locks all the doors. An intercom system with hands-free microphone maintains communication with the outside world even if the doors and windows are closed.





Series-production tyres: during loss of air the vehicle weight falls onto the wheel and prevents the car from continuing the journey.



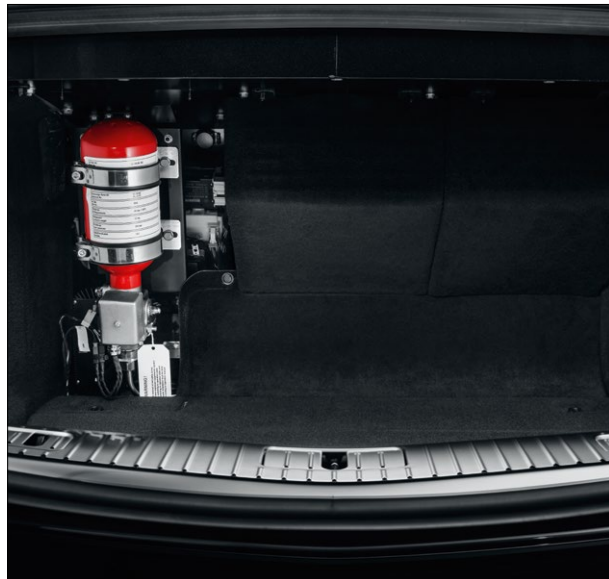
PAX run-flat system: attached to the rim is a rubber ring which bears the vehicle weight during loss of air and makes it possible to continue the journey.

## Mobility even in acute danger.

The certainty of always being able to escape a dangerous situation reduces the personal threat. That's why one maxim of special protection is to ensure that the vehicle remains mobile. For this purpose your Mercedes-Maybach S 600 Guard is equipped with special PAX run-flat tyres, which allow continuing on at a limited speed even if the tyre suddenly

or slowly loses air. Special anchoring of the tyre as well as integrated sidewall supports maintain your vehicle's manoeuvrability even if the tyre is completely flat. The tyre pressure monitoring system is also part of the standard equipment in the interest of your safety in everyday operation.





The bottle with the effective extinguishing agent is securely fastened in the boot.



The activation button for the fire extinguishing system is marked clearly to ensure safe operation.



The extinguishing agent is delivered to the right places within seconds through a number of different lines.

## Systems to make you breathe easy.

One horror scenario is undoubtedly the notion of a vehicle being attacked with fire. Your Mercedes-Maybach S 600 Guard is equipped with an integrated fire extinguisher system for such extreme situations. The system operates fully automatically with heat sensors in the underfloor area and in the engine compartment, but it can also be activated manually from the vehicle interior. The reservoir with a highly effective extinguishing agent is located

in the boot and is supplied in fractions of a second to the twelve sprinkler nozzles on the vehicle underside and in the engine compartment. Additional nitrogen in the individual lines is designed to ensure that the entire system remains operational even if individual lines are blocked.



As a further rescue feature that operates with sensors, an emergency fresh-air system that protects against smoke or irritant gas ingress is integrated into your Mercedes-Maybach S 600 Guard. For this purpose a compressed-air bottle is installed in the boot and sensors that detect irritant gases are located in areas where air enters the vehicle. As soon as the sensors activate the fresh-air system, the air recirculation flap is closed and the air

blowers are switched off. Pressing the trigger button closes the air vent flaps and initiates the flow of breathing air from the reservoir into the vehicle interior. In this way, the system provides sufficient air to escape from the danger zone.





## A matter of confidence and safety.

Your personal safety in your Mercedes-Maybach S 600 Guard naturally also depends on driving safety in a wide range of traffic situations. Our driver training courses provide the optimum preparation for slick handling of your special-protection vehicle. Several times a year, these two-day-long courses are held on our own training grounds – exclusively for our customers and their drivers. Extensive briefings and tips on how to use specific functions are followed by physical driving exercises that further familiarise the participants

with the special features. Training sessions on the limits of what is physically possible enhance driving skills. Another highlight is the winter training: under adverse weather conditions, exercises are performed to enable the driver to master the vehicle and increase driving safety, even if road conditions are extremely poor. At the end of the training, a certificate is issued confirming participation in the practical exercises.



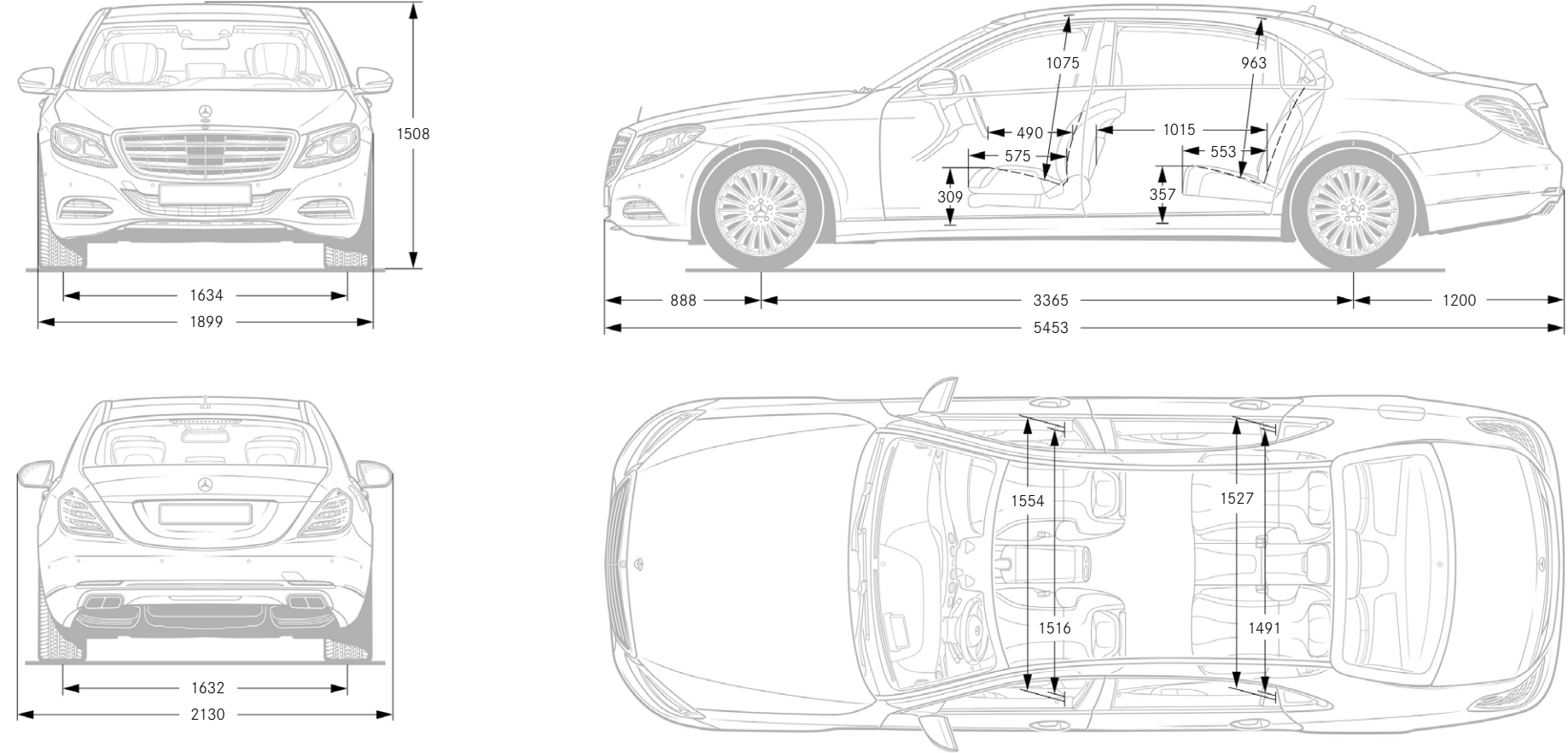
Technical data.

Mercedes-Maybach S 600 Guard	
Resistance level BRV 2009, version 2	VR10
Number of cylinders/EU standard	V12
Total displacement in cc	5980
Rated output <sup>1</sup> in kW at rpm	390/4900–5300
Rated torque in Nm at rpm	830/1900–4000
Fuel consumption in l/100 km, CO <sub>2</sub> emissions <sup>2</sup> (g/km)	
Urban	18.0 (421)
Extra-urban	9.2 (216)
Combined	13.2 (309)
Gross Vehicle Weight	4870
Kerb weight (EC, incl. driver [75 kg] + tank 90% full)	4350
EC payload	520
Acceleration from 0 to 100 km/h in s	7.9
Top speed in km/h	190 <sup>3</sup>
Boot capacity (approx., litres)	361
Tank capacity/incl. reserve (litres)	80/8
Tyres	PAX 255–720 R490 119T
Number of seats	4

<sup>1</sup> Figures according to Directive 80/1269/EEC in the currently applicable version.  
<sup>2</sup> The figures shown were obtained in accordance with the prescribed measuring process (Directive 80/1268/EEC in the currently applicable version).  
The figures are not based on an individual model and do not constitute part of the product offer; they are provided solely for purposes of comparison between different vehicle models.  
<sup>3</sup> Electronically limited.

Dimensions.

Mercedes-Maybach S 600 Guard



All dimensions in millimetres. The dimensions shown are mean values and apply to standard-specification, unladen vehicles.



**Take-back of end-of-life vehicles.** At the end of its long life, you can return your Mercedes-Maybach S 600 Guard to us for environment-friendly disposal in accordance with the European Union (EU) End-Of-Life Vehicle Directive. But that day is still a long way off.

A network of vehicle take-back depots and dismantling facilities has been established to make it as easy as possible for you to return your vehicle. You can return your vehicle to one of these enterprises free of charge. By doing so, you make an important contribution to completing the recycling process and conserving resources.

For more information about the recycling and disposal of end-of-life vehicles, and the take-back conditions, please visit [www.mercedes-benz.de/altfahrzeugverwertung](http://www.mercedes-benz.de/altfahrzeugverwertung)

**Please note:** changes may have been made to the product since going to print on 19.02.2016. The manufacturer reserves the right make changes to the design, form, colour or specification prior to delivery, provided these changes, while taking into account the interests of the vendor, can be deemed reasonable with respect to the purchaser. Where the vendor or the manufacturer uses symbols or numbers to describe an order or the subject of an order, no rights may be derived solely from these. The illustrations may include accessories and optional extras which do not form part of the standard specification. Actual colours may differ slightly from those shown owing to the limitations of the printing process. This brochure may also feature models and services not available in individual countries. Any statements about statutory, legal and fiscal regulations and impacts are valid only for the Federal Republic of Germany at the time this brochure went to print. Please consult your nearest authorised Mercedes-Benz dealer for current and more specific information.

[www.mercedes-benz.com](http://www.mercedes-benz.com)